

TIFFIN

2025

CLASS-C

WAYFARER



What's New Summary - Wayfarer

WHAT'S NEW

- Redesigned Floor Plans: 25 XLW & 25 XRW
- Drop Floor & High Ceilings
 - Changing from a “crawl space” style foundation to a “slab” style foundation.
 - Adding 6 inches to the interior of the coach. All top cabinets will have six extra inches of storage. This will enhance interior storage space.
 - Will be the tallest ceilings in any OEM Class C RV in the United States, by at least 4 inches.
- New High Pressure Laminate Cabinetry:
 - Phantom Ecru with Winter White Upper Cabinets
 - Glistening Trail with Winter White Upper Cabinets
- New Chrome Cabinet Hardware & Bathroom Accessories
- Adjustable Aluminum Cargo Boxes
- Propane Tank Relocated from Behind Rear Passenger Wheel to Drivers Side Compartment #2.
- All Utility Bays Now on Driver's Side & Storage Bays are now on Passenger's Side
- Serviceable Holding Tanks
- Matching Leather Upholstery Adjustable Driver and Passenger Seats
- Spyder System includes auto gen start feature

No Longer Available

- Hardwood Cabinetry
- Matte Black Cabinet Hardware & Bathroom Accessories
- Generation 6 Paint Scheme
- 25 LW and 25 RW Floor Plans (Dealer Stock Only)
- Black Leather Driver and Passenger Seats

Premium Paint System

The eight-step, full-body paint system features premium grade paints sealed with two layers of clear coat with ultraviolet protection. An additional layer of high-performance film protects the front of the coach and select areas.

Generation 7 Paint Schemes



G7 SILVER SAND



G7 COASTAL BLUE



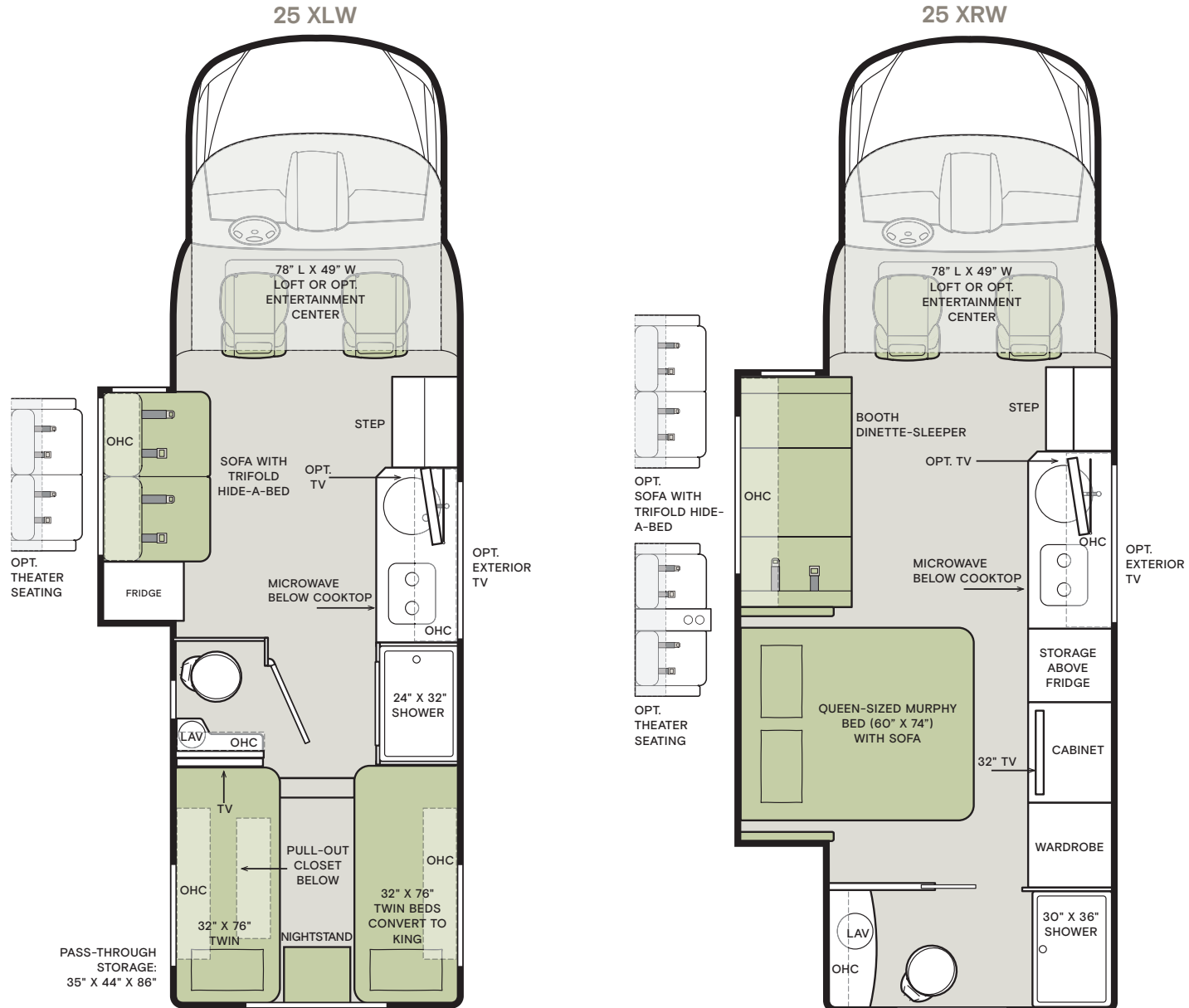
G7 SEA MIST

Floor Plans and Specifications

FLOOR PLAN	Overall Length (approx.)	Wheel Base	Overall Width ¹	Overall Height	Interior Height	Interior Width	Basement Storage (cubic feet, approx.)	Square Footage (approx.)	GAWR-Front (pounds)	GAWR-Rear (pounds)	GVWR (pounds)	Hitch Rating (pounds) ²	GCWR (pounds)
25 XLW	25' 8"	170.3"	90"	11' 4"	86"	87"	130	146	4,410	7,720	11,030	5,000	15,250
25 XRW	25' 8"	170.3"	90"	11' 4"	86"	87"	54	164	4,410	7,720	11,030	5,000	15,250

¹ The approximated coach width and length does not include side-view mirrors and rear ladders.

² Tow ratings and ability are subject to gross combined weight ratings on the tow vehicle. Hitch rated at 500-pound vertical tongue weight and includes 7-pin connector.



If optional furniture combinations are selected, window locations may vary from diagram shown. All options may not be available in every model. Because of progressive improvements and specifications, standard and optional equipment are subject to change without notice or obligation. For a complete and up-to-date list of available options and specifications, visit tiffinmotorhomes.com.

Interior Décor

Make it all yours. Personalize your décor experience with the Wayfarer's customization options. The Wayfarer's luxury design options allow you to arrive and live in style, wherever your adventures take you.

Colors of interior decor options shown may vary from colors on actual product.

SEDONA

HEADBOARD PILLOW

BED COVER

BEDROOM COUNTERTOP

FLOORING FURNITURE

CABINETS NEW



GLISTERING TRAIL



PHANTOM ECRU



WINTER WHITE ACCENT

GRAND VIEW

HEADBOARD PILLOW

BED COVER

BEDROOM COUNTERTOP

FLOORING FURNITURE

1

YEAR OR 12,000 MILES
LIMITED WARRANTY

3

YEARS DELAMINATION
LIMITED WARRANTY

5

YEARS OR 100,000 MILES
CHASSIS POWERTRAIN
LIMITED WARRANTY

3

YEARS OR 36,000 MILES
MERCEDES-BENZ CHASSIS
LIMITED WARRANTY

1

YEAR COACH
ROADSIDE SERVICES

FOR SALES CALL 256-356-8661 AND PARTS & SERVICE CALL 256-356-0261 OR VISIT TIFFINMOTORHOMES.COM

105 2ND ST NW RED BAY, AL 35582  



TIFFIN

MOTORHOMES

All trademarks and logos are owned or used under license by Tiffin Motor Homes, Inc. and include, but are not limited to: TIFFIN®, MANY ADVENTURES, ONE DREAM™, ALLEGRO®, ALLEGRO BREEZE®, ALLEGRO RED®, PHAETON®, ALLEGRO BUS®, ZEPHYR®, WAYFARER®, ROUGHING IT SMOOTHLY®, OPEN ROAD ALLEGRO®, BYWAY™, and associated logos and emblems.

Unauthorized use of any trademark of Tiffin Motor Homes, Inc. is strictly prohibited.

© Copyright 2024 Tiffin Motor Homes, Inc.

For all information concerning the limited warranty provided by Tiffin, please refer to the full written limited warranty set forth on the Tiffin website or held by our authorized dealerships.

Please note, some interior furnishings not included. Revised: 6/19/24