



Entrada

CLASS C MOTORHOMES



Entrada
CLASS C
MOTORHOMES

EastToWestRv.com/Entrada
A DIVISION OF FOREST RIVER



Entrada

CLASS C
MOTORHOMES



12 Volt TV
(Standard in all Models)



**Convection Microwave
w/ 3 Burner Cooktop**
(Standard in all Models)



Entrada 2900DS

(Shown with Granite Peak Interior. Standard Features Include Designer Countertops, 10.7 cu.ft. Appliances & High Rise Faucet)



**Extended Storage Drawers
Under Dinette On Roller Guides**



U-Shaped Dinette
(Standard in 2900DS & 2900DS)



Yamaha Powered NPS Generator
(Standard in all Models)



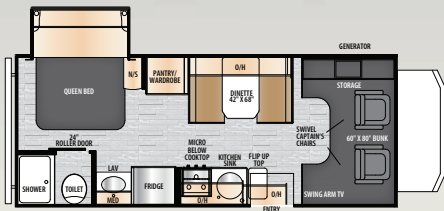
Rotocast Storage
(Standard in all Models)



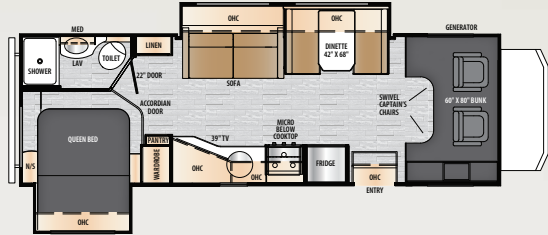
Entrada 2200S Master Bedroom

(Shown with Full Walk-Around Queen Bed)

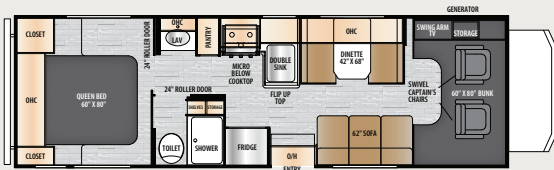




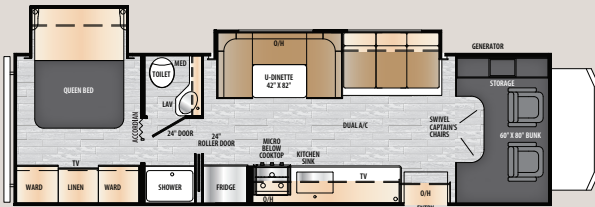
2200S
30 AMP SERVICE



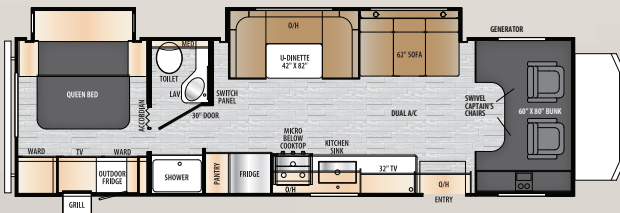
2600DS
30 AMP SERVICE



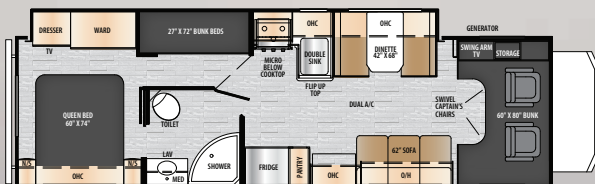
2700NS
30 AMP SERVICE



2900DS
50 AMP SERVICE
DUAL AC
LARGER GENERATORS



29500K
50 AMP SERVICE
DUAL AC
LARGER GENERATORS



3100FB
50 AMP SERVICE
DUAL AC
LARGER GENERATORS

Entrada Specifications

	2200S	2600DS	2700NS	2900DS	29500K	3100FB
Engine	Ford	Ford	Ford	Ford	Ford	Ford
Wheel Base	158"	190"	190"	220"	220"	220"
GVWR Lbs.	12500	14500	14500	14500	14500	14500
GAWRR Lbs.	8500	9600	9600	9600	9600	9600
GAWRF Lbs.	5000	5000	5000	5000	5000	5000
UVW Lbs.	9669	11273.8	10423	11784	12167	12404
GCWR Lbs.	18500	22000	22000	22000	22000	22000
CCC Lbs.	2406	2801	3652	2291	1908	1671
Fuel Capacity (Gal.)	55	55	55	55	55	55
Hitch Rating	5000	7500	7500	7500	7500	7500
Tongue Weight	500	500	500	500	500	500
Length Bumper to Bumper	23' 10"	29' 10"	29' 11"	32' 3"	32' 3"	32' 6"
Exterior Height w/ A/C	11' 3"	11' 3"	11' 3"	11' 4"	11' 4"	11' 4"
Exterior Width	101"	101"	101"	101"	101"	101"
Interior Width	95 1/2"	95 1/2"	95 1/2"	95 1/2"	95 1/2"	95 1/2"
Interior Height	84"	84"	84"	84"	84"	84"
Interior Square Footage	185	255	221	271	271	278
Exterior Storage Capacity (Cu. Ft.)	16	36	25	45	45	75
Fresh Water (Gal.)	35	35	35	35	35	35
Grey Holding Tank Capacity (Gal.)	32	39	32	32	32	39
Black Holding Tank Capacity (Gal.)	27	39	32	32	32	39
L.P. Capacity (Gal.)	9.8	9.8	9.8	9.8	9.8	9.8
Awning Length	14'	12'	20'	20'	16'	16'
Water Heater Capacity (Gal.)	6	6	6	6	6	6

Entrada Standards & Options

Entrada Top Features

- ▶ Azdel Composite Sidewall Construction
- ▶ One-Piece Seamless Fiberglass Frontcap
- ▶ 60"x80" Cabover Bunk Mattress
- ▶ Slide Out Awning Toppers
- ▶ Arctic Package
- ▶ 40" 12V TV
- ▶ Integrated Entry Step
- ▶ XL Dinette Storage Drawers
- ▶ Convection Microwave
- ▶ 10.7 cu/ft 12V Refrigerator
- ▶ Backup and Sideview Camera System w/ Monitor
- ▶ Apple Carplay/Android Auto Ready Dash Display
- ▶ Maxx Air Fan w/ Remote & Rain Sensor
- ▶ NPS Yamaha Generator w/ Remote Start & Emergency Pull Start
- ▶ 15K Main AC
- ▶ 50amp Service & Dual AC (2900DS, 290500K, 3100FB)
- ▶ Dicor DiFlex II TPO Roof Membrane
- ▶ 12V USB Charge Ports
- ▶ 7' Interior Height

Entrada Value Package

- ▶ 40" 12V TV
- ▶ 10.7 cu/ft 12V Refrigerator
- ▶ Convection Microwave
- ▶ One Piece Molded Fiberglass Front Cap
- ▶ Power Awning w/ LED Light Strip
- ▶ Backup & Sideview Camera System w/ Monitor
- ▶ 7500lb Hitch (E-450) 5000lb Hitch (E-350)
- ▶ 2" Thick Sidewalls w/ Azdel Composite Exterior
- ▶ 12V Tank Heaters
- ▶ Winegard Air 360+ Antenna w/ Integrated WiFi Prep
- ▶ Black Tank Flush
- ▶ Exterior LP Quick Connect
- ▶ Flush Floor Main Floor Construction
- ▶ RotoCast Exterior Storage Compartments

All New From Ford

- ▶ Ford 7.3L V8 Engine
- ▶ 6-Speed Ford TorqShift Automatic Transmission
- ▶ 325HP w/ 468lb ft. of torque

Three Floorplans On 50amp Service - Industry First!

- ▶ 2900DS, 29500K, 3100FB tout 50-amp Service! That upgrades your generator to a 5500watt NPS Yamaha Generator and dual AC Standard. No need for a power shedding system, run both ACs at the same time!

Entrada Options

- ▶ 4pt Hydraulic Leveling System
- ▶ Swivel Seats (Driver & Passenger)
- ▶ Solar Charge System

Entrada Solar Overview

- Gain more camping flexibility with your 12V systems such as refrigerator, TV, and lights. Keeps your 12V house batteries at a healthy charge to extend life, increase performance, and save money!
- ▶ 200 watt Monocrystalline Solar Panel
 - ▶ 30-amp Charge Controller w/ LED Display
 - ▶ (2) 12V Battery Installed in Step Well

OUR COMPANY TAKES PRIDE IN OUR FIVE GUIDING PRINCIPLES AND OUR CORPORATE PHILOSOPHY
 which focuses on people working together to create high quality, value-added products that deliver the ultimate RV experience.

Sustainable Manufacturing

An important objective to our strategy and operations is to implement economically sound manufacturing processes to reduce/recycle waste & conserve energy and natural resources.

Corporate & Social Responsibility

We foster a business environment in which we focus on and practice:

- Ethical Labor Practices
- Teamwork
- Philanthropy
- Volunteering

Culture & Values

We are a forward thinking company committed to fostering a culture of teamwork. By being transparent, we encourage our employees to think outside the box and make a difference!

Quality & Construction

Our team takes pride in each unit we build. Our manufacturing standards and point to point inspections ensure each EAST TO WEST brand is built to the same quality specifications every time.

Our Commitment

We strive to provide the highest quality products at the best possible price to our customers. We invite you to be a part of the EAST TO WEST family and we look forward to exceeding your expectations!



**24/7 EMERGENCY
 ROADSIDE ASSISTANCE
 WITH VEHICLE PURCHASE***

TOWING
 JUMP-STARTS
 TIRE CHANGES
 FLUID DELIVERY
 LOCKOUT
 SERVICE

WINCH-OUT
 MOBILE MECHANIC
 TECHNICAL
 SUPPORT
 DEALER LOCATOR
 SERVICES



*VALID FOR 1 YEAR FROM DATE OF PURCHASE



Learn More
 Scan this barcode using a QR Reader on your smart phone to learn more about Forest River.



A Berkshire Hathaway company.

3000 COUNTY ROAD 6 WEST ELKHART, IN 46514
 WWW.EASTTOWESTRV.COM 574.264.6664

FREE MEMBERSHIP
 to Forest River Owners' Group

www.forestriverfrog.com



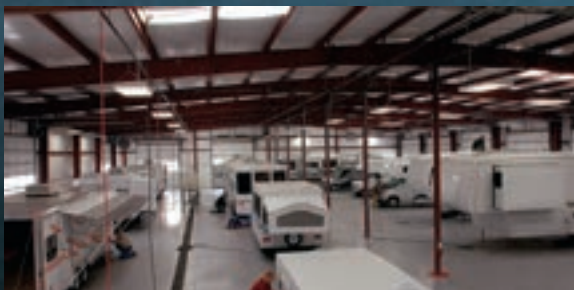
East To West RV

@easttowestr

CUSTOMER SATISFACTION



www.ForestRiverBuyLocal.com



PRE-DELIVERY INSPECTION FACILITY

20,000 square feet of quality assurance. The bare essentials for a premium product. This state-of-the-art facility gives immediate daily feedback to production for quality assurance in every unit built.

SPECIFICATION DEFINITIONS

GVWR (Gross Vehicle Weight Rating) - is the maximum permissible weight of the unit when fully loaded. It includes all weights, inclusive of all fluids, cargo, optional equipment and accessories. For safety and product performance do NOT exceed the GVWR.

GAWR (Gross Axle Weight Rating) - is the maximum permissible weight, including cargo, fluids, optional equipment and accessories that can be safely supported by a combination of all axles.

UVW (Unloaded Vehicle Weight)* - is the typical weight of the unit as manufactured at the factory. It includes all weight at the unit's axle(s) and tongue or pin and LP Gas. The UVW does not include cargo, fresh potable water, additional optional equipment or dealer installed accessories.

*Estimated average based on standard build optional equipment.

CCC (Cargo Carrying Capacity)** - is the amount of weight available for fresh potable water, cargo, additional optional equipment and accessories. CCC is equal to GVWR minus UVW. Available CCC should accommodate fresh potable water (8.3 lbs per gallon). Before filling the fresh water tank, empty the black and gray tanks to provide for more cargo capacity.

** Estimated average based on standard build optional equipment

Each Forest River RV is weighed at the manufacturing facility prior to shipping. A label identifying the unloaded vehicle weight of the actual unit and the cargo carrying capacity is applied to every Forest River RV prior to leaving our facilities.

The load capacity of your unit is designated by weight, not by volume, so you cannot necessarily use all available space when loading your unit.

YOUR *Entrada* DEALER

All information contained in this brochure is believed to be accurate at the time of publication. However, during the model year, it may be necessary to make revisions and Forest River, Inc., reserves the right to make all such changes without notice, including prices, colors, materials, equipment and specifications as well as the addition of new models and the discontinuance of models shown in this brochure. Therefore, please consult with your Forest River dealer and confirm the existence of any materials, design or specifications that are material to your purchase decision. Litho. U.S.A.
 FTW 1980 P&W: 2022.02.23