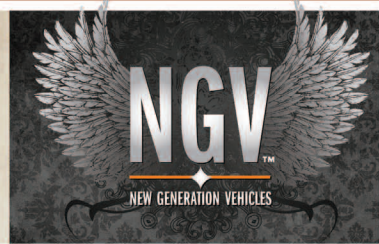


SUNSET TRAIL

THE MOST INNOVATIVE LIGHTWEIGHT RV

MORE >>> Go see more details on construction, features and benefits at: crossroadsrv.com/sunsettrail

CROSSROADS[®]
RECREATIONAL VEHICLES



YOUR LOCAL CROSSROADS DEALER:

305 HAWPATCH DRIVE 🍷 TOPEKA, IN 46571 🍷 PH 260 593-3850 🍷 FX 260 593-2088



DISCLAIMER: Product information is as accurate as possible at the date of publication of this brochure. All features, floorplans, and specifications in this brochure are subject to change without notice. Please also consult CrossRoads RV's website at www.crossroadsrv.com for more current product information and specifications. Tow Vehicle Disclaimer. CAUTION: Owners of CrossRoads recreational vehicles are solely responsible for the selection and proper use of tow vehicles. All customers should consult with a motor vehicle manufacturer or their dealer concerning the purchase and use of suitable tow vehicles for CrossRoads RV products. CrossRoads RV disclaims any liability or damages suffered as a result of the selection, operation, use or misuse of tow vehicle. CROSSROADS RV'S LIMITED WARRANTY DOES NOT COVER DAMAGE TO THE RECREATIONAL VEHICLE OR TOW VEHICLE AS A RESULT OF THE SELECTION, OPERATION, USE OR MISUSE OF THE TOW VEHICLE.





INNOVATION 4



RESERVE LIVING 8



SUNSET TRAIL

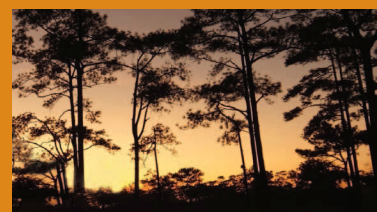
INNOVATION. PERFORMANCE. UTILITY *Fun*



FLOORPLANS & TOWING 12



SUPERLITE LIVING 10



UTILITY 14



THE NEW GENERATION OF RECREATIONAL VEHICLES IS HERE. *Sunset Trail*

Innovative



RESERVE TRAVEL TRAILER

INNOVATION / PERFORMANCE / UTILITY >>>

SUNSET TRAIL

The purest form of "simple"—enjoyment of family, camping and the great outdoors! Every coach is built with your camping experience in mind. The features and amenities you want all come standard in a Sunset Trail.



RESERVE FIFTH WHEEL TRAILER



SUPER LITE TRAVEL TRAILER



SUPER LITE FIFTH WHEEL TRAILER

Living INNOVATION

RESERVE TRAVEL TRAILERS



You'll discover simple, yet obvious deep convictions in the way each Sunset Trail is thoughtfully designed. Contemporary styling and packed with features. Features like LCD TV's, outside entertainment centers on certain models, solid surface counter tops, spacious rooms and all of the amenities of home. Get out there and start exploring the possibilities!

RESERVE FIFTH WHEEL TRAILERS



You'll find some spectacular fifth wheel floor plan layouts with Sunset Trail. Reserve models provide a high-end feel at an affordable price. Slide rooms are well thought out for a spacious, luxurious, yet practical environment. Leave the complexity of life behind when you set out for your next adventure in a Sunset Trail Reserve.

SEE MUCH MORE AT: CROSSROADSRV.COM/SUNSETTRAIL *Get Started*

Living RECREATION

SUPER LITE TRAVEL TRAILERS



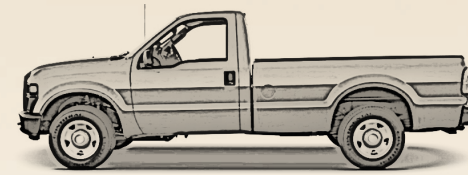
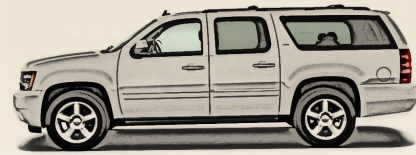
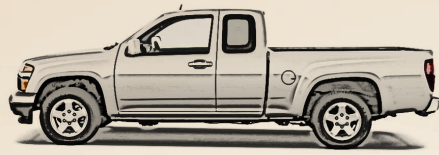
Super Lites are not light on amenities. Stay comfortably and safely out of the elements when you take all of the accommodations of home along in your Sunset Trail. Plenty of quality living, sleeping and family room. There's a high-end feel to these entry-level priced travel trailers. That's by design!

SUPER LITE FIFTH WHEEL TRAILERS



You don't need large tow vehicles to take all of this with you. Super Lite fifth wheels give you even more spacious interior room and well-thought-out storage. Large beds, sinks, shower, and comfort features abound in Sunset Trail campers. See the long list of standard and available equipment on page 13 for all the details. Set your sights on high value for the right price.

SEE MUCH MORE AT: CROSSROADSRV.COM/SUNSETTRAIL *Get Started*

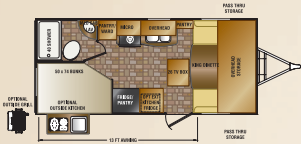


5,000 LBS. (OR LESS)

7,500 LBS. (OR LESS)

8,750 LBS. (OR LESS)

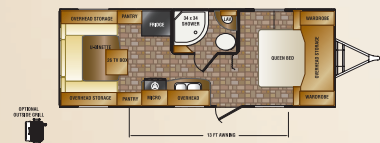
10,000 LBS. (OR LESS)



ST190FD — SUPER LITE TRAVEL TRAILER
EXTERIOR LENGTH: 22' 0" / EXTERIOR HEIGHT W/ AC: TBD / HITCH WEIGHT: TBD / AXLE WEIGHT: TBD / UNLOADED WEIGHT: TBD / CARRYING CAPACITY: TBD / TIRES: 205/75R14C



ST220RB — SUPER LITE TRAVEL TRAILER
EXTERIOR LENGTH: 25' 0" / EXTERIOR HEIGHT W/ AC: TBD / HITCH WEIGHT: TBD / AXLE WEIGHT: TBD / UNLOADED WEIGHT: TBD / CARRYING CAPACITY: TBD / TIRES: 205/75R15C



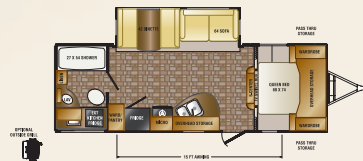
ST230RL — SUPER LITE TRAVEL TRAILER
EXTERIOR LENGTH: 26' 0" / EXTERIOR HEIGHT W/ AC: TBD / HITCH WEIGHT: TBD / AXLE WEIGHT: TBD / UNLOADED WEIGHT: TBD / CARRYING CAPACITY: TBD / TIRES: 205/75R14C



ST230RS — SUPER LITE TRAVEL TRAILER
EXTERIOR LENGTH: 26' 0" / EXTERIOR HEIGHT W/ AC: TBD / HITCH WEIGHT: 538 / AXLE WEIGHT: TBD / UNLOADED WEIGHT: TBD / CARRYING CAPACITY: TBD / TIRES: 205/75R14C



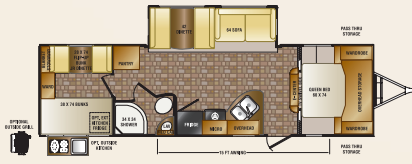
ST240BH — SUPER LITE TRAVEL TRAILER
EXTERIOR LENGTH: 27' 4" / EXTERIOR HEIGHT W/ AC: TBD / HITCH WEIGHT: TBD / AXLE WEIGHT: TBD / UNLOADED WEIGHT: TBD / CARRYING CAPACITY: TBD / TIRES: 205/75R15C



ST250RB — SUPER LITE TRAVEL TRAILER
EXTERIOR LENGTH: 28' 3" / EXTERIOR HEIGHT W/ AC: 11' 2" / HITCH WEIGHT: 582 / AXLE WEIGHT: 4708 / UNLOADED WEIGHT: 5290 / CARRYING CAPACITY: 2055 / TIRES: 205/75R15C



ST270BH — SUPER LITE TRAVEL TRAILER
EXTERIOR LENGTH: 30' 1" / EXTERIOR HEIGHT W/ AC: 11' 2" / HITCH WEIGHT: 556 / AXLE WEIGHT: 4798 / UNLOADED WEIGHT: 5354 / CARRYING CAPACITY: 1965 / TIRES: 205/75R15C



ST290QB — SUPER LITE TRAVEL TRAILER
EXTERIOR LENGTH: 32' 7" / EXTERIOR HEIGHT W/ AC: 11' 2" / HITCH WEIGHT: 564 / AXLE WEIGHT: 5136 / UNLOADED WEIGHT: 5700 / CARRYING CAPACITY: 1627 / TIRES: 205/75R15C



ST300BH — SUPER LITE TRAVEL TRAILER
EXTERIOR LENGTH: 33' 2" / EXTERIOR HEIGHT W/ AC: 11' 2" / HITCH WEIGHT: 538 / AXLE WEIGHT: 5538 / UNLOADED WEIGHT: 6076 / CARRYING CAPACITY: 1225 / TIRES: 205/75R15C



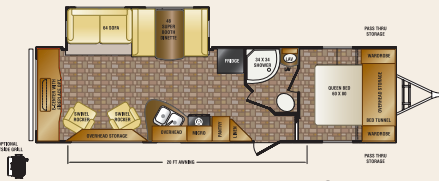
ST26RB — RESERVE TRAVEL TRAILER
EXTERIOR LENGTH: 30' 1" / EXTERIOR HEIGHT W/ AC: 11' 2" / HITCH WEIGHT: TBD / AXLE WEIGHT: TBD / UNLOADED WEIGHT: TBD / CARRYING CAPACITY: TBD / TIRES: 225/75R15D



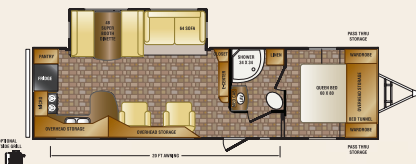
SF270RL — SUPER LITE FIFTH WHEEL
EXTERIOR LENGTH: 28' 11" / EXTERIOR HEIGHT W/ AC: TBD / HITCH WEIGHT: TBD / AXLE WEIGHT: TBD / UNLOADED WEIGHT: TBD / CARRYING CAPACITY: TBD / TIRES: 225/75R15D



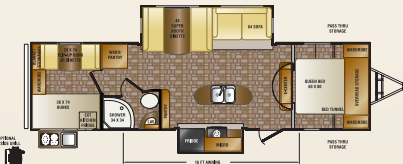
ST28BH — RESERVE TRAVEL TRAILER
EXTERIOR LENGTH: 32' 2" / EXTERIOR HEIGHT W/ AC: 11' 2" / HITCH WEIGHT: TBD / AXLE WEIGHT: TBD / UNLOADED WEIGHT: TBD / CARRYING CAPACITY: TBD / TIRES: 225/75R15D



ST30RE — RESERVE TRAVEL TRAILER
EXTERIOR LENGTH: 34' 5" / EXTERIOR HEIGHT W/ AC: 11' 2" / HITCH WEIGHT: 700 / AXLE WEIGHT: 5588 / UNLOADED WEIGHT: 6288 / CARRYING CAPACITY: 3012 / TIRES: 225/75R15D



ST30RK — RESERVE TRAVEL TRAILER
EXTERIOR LENGTH: 34' 5" / EXTERIOR HEIGHT W/ AC: 11' 2" / HITCH WEIGHT: 662 / AXLE WEIGHT: 5684 / UNLOADED WEIGHT: 6346 / CARRYING CAPACITY: 2916 / TIRES: 225/75R15D

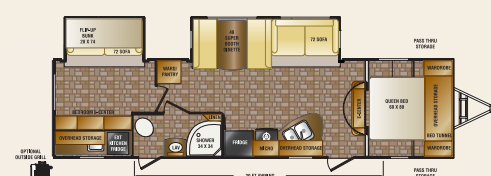


ST31SS — RESERVE TRAVEL TRAILER
EXTERIOR LENGTH: 34' 7" / EXTERIOR HEIGHT W/ AC: 11' 2" / HITCH WEIGHT: TBD / AXLE WEIGHT: TBD / UNLOADED WEIGHT: TBD / CARRYING CAPACITY: TBD / TIRES: 225/75R15D

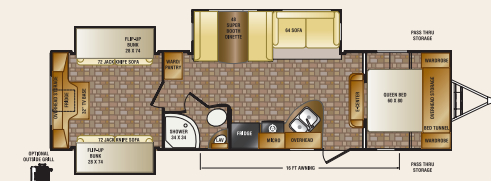


SF270BH — SUPER LITE FIFTH WHEEL
EXTERIOR LENGTH: 28' 6" / EXTERIOR HEIGHT W/ AC: 12' 7" / HITCH WEIGHT: 1030 / AXLE WEIGHT: 5554 / UNLOADED WEIGHT: 6584 / CARRYING CAPACITY: 3046 / TIRES: 225/75R15D

SF270RL — SUPER LITE FIFTH WHEEL
EXTERIOR LENGTH: 28' 11" / EXTERIOR HEIGHT W/ AC: TBD / HITCH WEIGHT: TBD / AXLE WEIGHT: TBD / UNLOADED WEIGHT: TBD / CARRYING CAPACITY: TBD / TIRES: 225/75R15D



ST32BH — RESERVE TRAVEL TRAILER
EXTERIOR LENGTH: 35' 11" / EXTERIOR HEIGHT W/ AC: 11' 2" / HITCH WEIGHT: 674 / AXLE WEIGHT: 6514 / UNLOADED WEIGHT: 7188 / CARRYING CAPACITY: 2086 / TIRES: 225/75R15D



ST32FR — RESERVE TRAVEL TRAILER
EXTERIOR LENGTH: 35' 11" / EXTERIOR HEIGHT W/ AC: 11' 4" / HITCH WEIGHT: 948 / AXLE WEIGHT: 6390 / UNLOADED WEIGHT: 7338 / CARRYING CAPACITY: 2210 / TIRES: 225/75R15D



ST32RL — RESERVE TRAVEL TRAILER
EXTERIOR LENGTH: 35' 11" / EXTERIOR HEIGHT W/ AC: 11' 4" / HITCH WEIGHT: 998 / AXLE WEIGHT: 6575 / UNLOADED WEIGHT: 7573 / CARRYING CAPACITY: 2025 / TIRES: 225/75R15D



ST33PB — RESERVE TRAVEL TRAILER
EXTERIOR LENGTH: 37' 1" / EXTERIOR HEIGHT W/ AC: 11' 4" / HITCH WEIGHT: TBD / AXLE WEIGHT: TBD / UNLOADED WEIGHT: TBD / CARRYING CAPACITY: TBD / TIRES: 225/75R15D



SF26RB — RESERVE FIFTH WHEEL
EXTERIOR LENGTH: 27' 6" / EXTERIOR HEIGHT W/ AC: 12' 7" / HITCH WEIGHT: 1560 / AXLE WEIGHT: 5916 / UNLOADED WEIGHT: 7476 / CARRYING CAPACITY: 2684 / TIRES: 225/75R15D



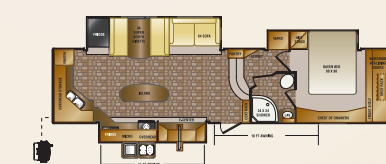
SF28BH — RESERVE FIFTH WHEEL
EXTERIOR LENGTH: 29' 11" / EXTERIOR HEIGHT W/ AC: 12' 7" / HITCH WEIGHT: 1786 / AXLE WEIGHT: 5960 / UNLOADED WEIGHT: 7746 / CARRYING CAPACITY: 2640 / TIRES: 225/75R15D



SF32RL — RESERVE FIFTH WHEEL
EXTERIOR LENGTH: 33' 11" / EXTERIOR HEIGHT W/ AC: 12' 7" / HITCH WEIGHT: 1898 / AXLE WEIGHT: 6674 / UNLOADED WEIGHT: 8572 / CARRYING CAPACITY: 3486 / TIRES: 225/75R15D



SF34BH — RESERVE FIFTH WHEEL
EXTERIOR LENGTH: 35' 11" / EXTERIOR HEIGHT W/ AC: 12' 7" / HITCH WEIGHT: TBD / AXLE WEIGHT: TBD / UNLOADED WEIGHT: TBD / CARRYING CAPACITY: TBD / TIRES: 225/75R15D



SF34RK — RESERVE FIFTH WHEEL
EXTERIOR LENGTH: 35' 11" / EXTERIOR HEIGHT W/ AC: 12' 7" / HITCH WEIGHT: 1806 / AXLE WEIGHT: 7459 / UNLOADED WEIGHT: 9265 / CARRYING CAPACITY: 2701 / TIRES: 225/75R15D



SF34RE — RESERVE FIFTH WHEEL
EXTERIOR LENGTH: 35' 11" / EXTERIOR HEIGHT W/ AC: 12' 7" / HITCH WEIGHT: TBD / AXLE WEIGHT: TBD / UNLOADED WEIGHT: TBD / CARRYING CAPACITY: TBD / TIRES: 225/75R15D

SF28BH — RESERVE FIFTH WHEEL
EXTERIOR LENGTH: 29' 11" / EXTERIOR HEIGHT W/ AC: 12' 7" / HITCH WEIGHT: 1786 / AXLE WEIGHT: 5960 / UNLOADED WEIGHT: 7746 / CARRYING CAPACITY: 2640 / TIRES: 225/75R15D

PERFORMANCE

Unmatched UTILITY

RESERVE TRAVEL TRAILERS & FIFTH WHEELS



POPULAR STANDARDS & OPTIONS

STANDARD EXTERIOR

- Aluminum wheels
- Black tank flush
- 6 gallon DSI gas/electric water heater
- Tinted windows
- Outside speakers
- 15,000 BTU air conditioner
- Electric lighted awning
- Power stab jacks
- Power tongue jack
- Swing-out grab handle
- Secure stance EZ Lube axles
- Nitrogen filled radial tires
- Continu.us TV antenna
- Satellite prep
- Enclosed underbelly
- Strutted entry doors
- Bumper mount grill
- Spare tire
- Exterior towel rack
- Blue LED front cap light
- Detachable power cord
- 12 volt receptacle with light in pass-through storage area
- Outside shower

STANDARD INTERIOR

- Microwave
- Range with oven
- 32" HD LCD TV
- 8 cu ft. double door refrigerator
- Bluetooth CD/DVD/stereo
- Designer privacy shades
- Skylight in shower
- Foot flush porcelain toilet
- Detector for smoke, carbon monoxide, and LP gas
- Fire extinguisher
- Non-cracking stain resistant vinyl flooring
- Magnetized fridge door
- Drawers under dinette
- Remote control
- Tri-fold hide-a-bed sofa
- Solid surface countertops
- Fireplace
- 60 x 80 queen bed

OPTIONS

- 4 chairs w/ solid surface dream dinette (replaces dinette booth)
- End table (ST30RE, ST30RK)

- Fantastic fan with rain sensor
- Thermo-pane windows
- Apollo tech insulation
- 50 amp service with 2nd air conditioner prep
- Additional 13,500 BTU air conditioner
- 30# tanks
- Sink covers
- 26" HD LCD TV
- 32" HD LCD TV
- Theater seating (SF32RL & ST32RL only)
- Sofa lounger (ST26RB)
- Ceiling fan (5W only)
- Skylight in kitchen (SF26RB, SF28BH, SF32RL, SF34RK, SF34RE, ST26RB, ST28BH, ST31SS, ST32RL)
- ABS hitch cover (5W only)
- 10 gallon water heater (5W only - SF32RL, SF34RK, SF34RE, SF34BH)
- Outside cook center (replaces under bunk storage, ST28BH, ST31SS, SF28BH)
- Upgraded queen bed mattress

SUPER LITE TRAVEL TRAILERS & FIFTH WHEELS



POPULAR STANDARDS & OPTIONS

STANDARD EXTERIOR

- Aluminum wheels
- Black tank flush
- 6 gallon DSI gas/electric water heater
- Tinted windows
- Outside speakers
- 15,000 BTU air conditioner
- Electric lighted awning
- Manual stab jacks
- Swing-out grab handle
- Secure stance EZ Lube axles
- Nitrogen filled radial tires
- Continu.us TV antenna
- Satellite prep
- Enclosed underbelly
- Strutted entry doors
- Bumper mount grill
- Spare tire
- Exterior towel rack
- Blue LED front light
- Detachable power cord
- 12 volt receptacle with light in pass-through storage area
- Outside shower
- Front diamond plating

STANDARD INTERIOR

- Microwave
- Range with oven
- 32" HD LCD TV
- 8 cu ft. double door refrigerator
- Bluetooth CD/DVD/stereo
- Designer privacy shades
- Skylight in shower
- Foot flush porcelain toilet
- Detector for smoke, carbon monoxide, and LP gas
- Fire extinguisher
- Non-cracking stain resistant vinyl flooring
- Magnetized fridge door
- Drawers under dinette

OPTIONS

- 4 dinette chairs (replaces dinette booth, ST225ORB, ST270BH, ST290QB, ST300BH)
- Fantastic fan with rain sensor
- Thermo-pane windows
- Apollo tech insulation

- 50 amp service with 2nd air conditioner prep (ST250RB, ST270BH, ST290QB, ST300BH, SF270BH, SF270RL)
- Additional 13,500 BTU air conditioner
- 30# tanks
- Sink covers
- 26" HD LCD TV
- Ceiling fan (5W only)
- ABS hitch cover (5W only)
- Outside cook center (replaces under bunk storage, ST270BH, ST290QB, SF270BH)
- Power stab jacks
- Power tongue jack
- Tri-fold hide-a-bed sofa
- Skylight in kitchen (SF270BH)
- Al fresco campsite strut window (ST230RS)
- Upgraded queen bed mattress

SEE MUCH MORE AT: CROSSROADSRV.COM/SUNSETTRAIL *Get Informed*

CROSSROADSRV.COM/SUNSETTRAIL



Learn more about Sunset Trail and all of CrossRoads RV's quality products when you visit our website. Find your closest Sunset Trail dealer as well and see one up close and personal.



MADE IN THE USA



Proud to be made in the United States of America! All CrossRoads products, including Sunset Trail models, are hand-crafted by a seasoned Midwest workforce dedicated to quality and integrity. The best only gets better when you consider the meticulous attention to detail, quality of components and value an American made product brings. Check out our full line of products at crossroadsrv.com today.



SUNSET TRAIL

INNOVATION. PERFORMANCE. UTILITY *Fun*

YOUR NEXT ADVENTURE STARTS HERE!



THE NEW GENERATION OF RECREATIONAL VEHICLES IS HERE. *Sunset Trail*