

2017

RED



**TIFFIN**  
MOTORHOMES



SHOWN 33 AA FLOOR PLAN WITH SILVER SAND EXTERIOR PAINT SCHEME



SHOWN 33 AA FLOOR PLAN WITH MOCHA CABINETS & TRUFFLE INTERIOR



MOCHA CABINETS & TRUFFLE INTERIOR

2017

RED

# FUN FOR ALL. ALL FOR FUN.

A popular choice for families and first-time RVers, the 2017 Tiffin RED might be the most value-packed coach in our line-up. Named for its fuel-efficient, power-packed rear engine diesel, the RED spoils you with a multitude of standard features considered luxury upgrades by other RV manufacturers: Automatic HWH hydraulic jacks. Handcrafted cabinetry. Water filtration system. Ceramic tile floor. And the list goes on. Take a closer look at the RED. There's a lot to like.

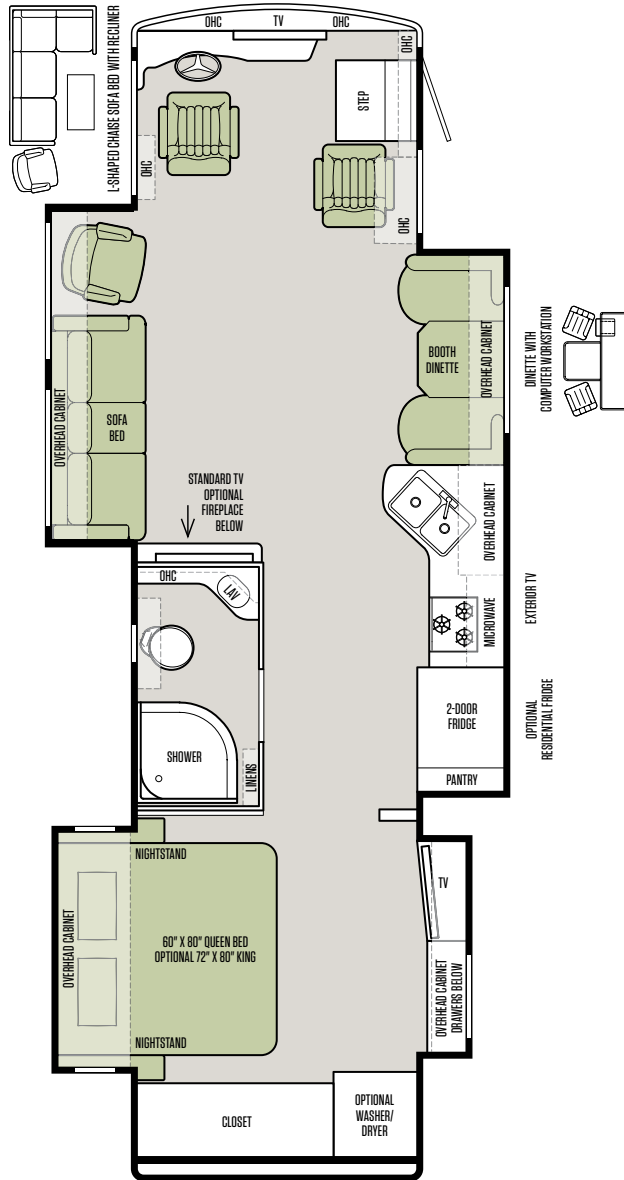


SHOWN 33 AA FLOOR PLAN WITH MOCHA CABINETS & TRUFFLE INTERIOR

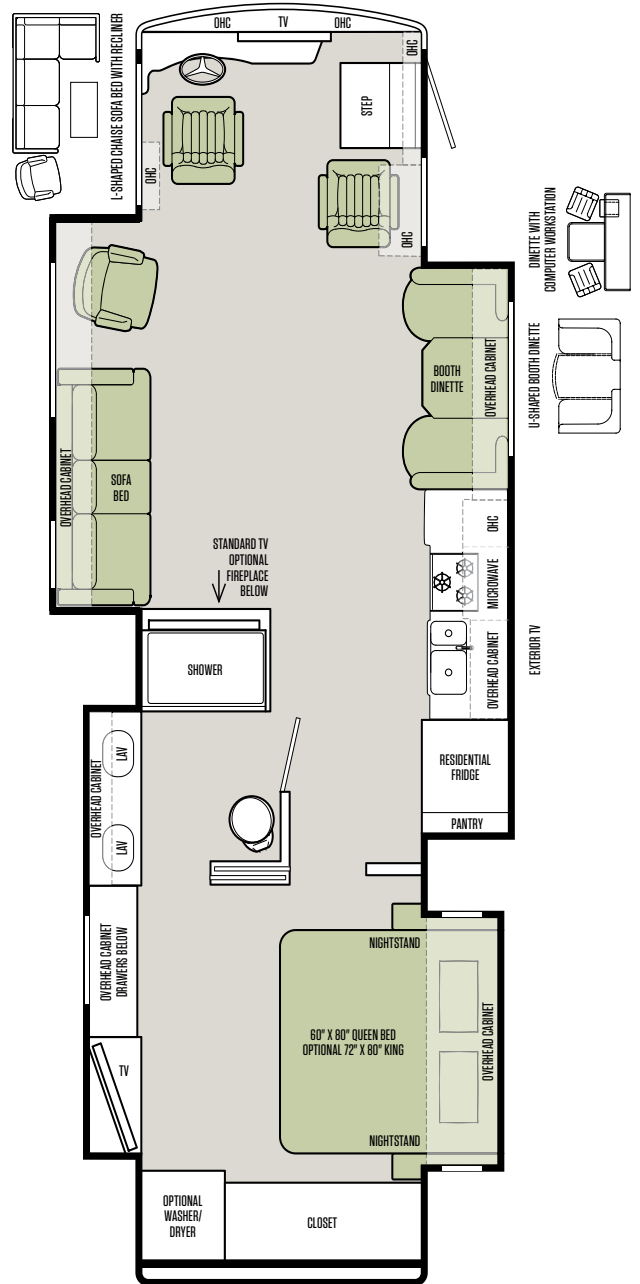
## FLOOR PLANS

Thoughtful in every detail  
and in every dimension.

33 AA



37 PA

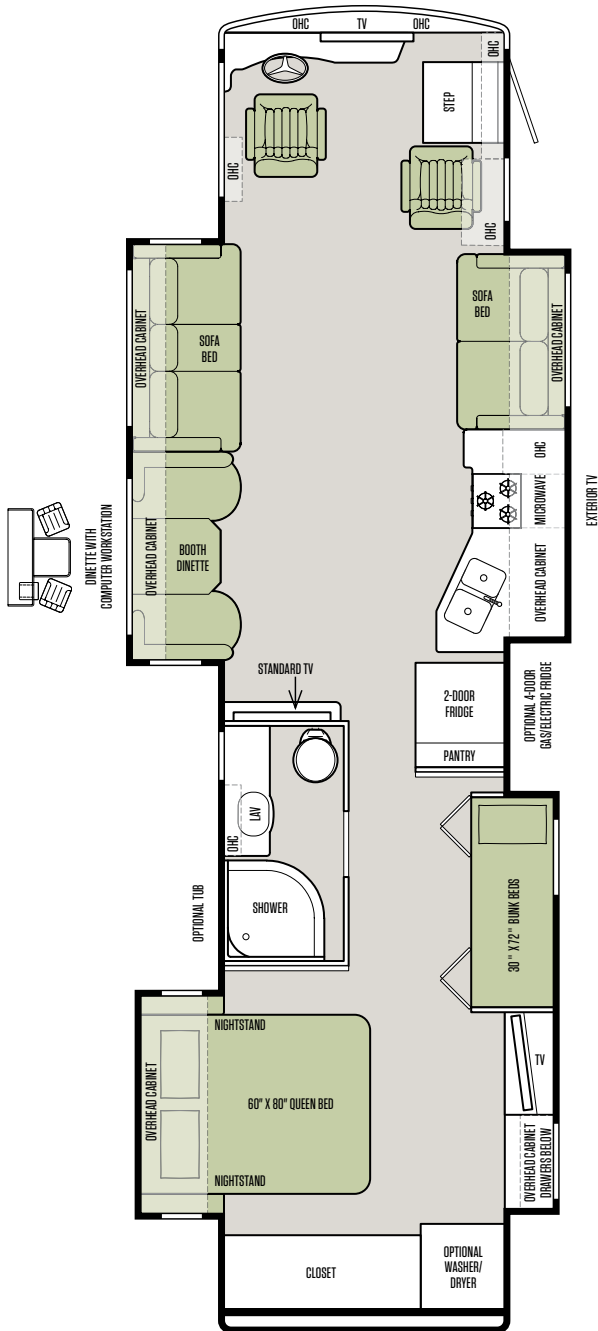


# FLOOR PLANS

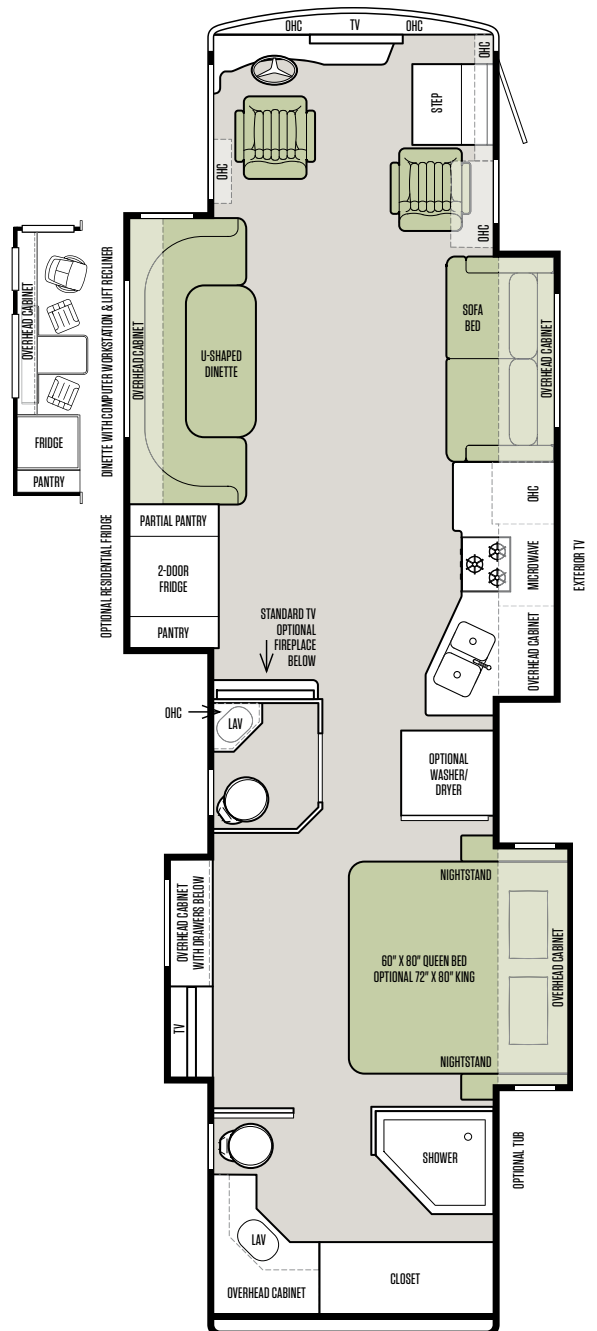


The design of every Tiffin floor plan must meet four essential criteria:  
**Maximum space.** **Optimal organization.** **Relaxation plus.** **Elegant atmosphere.**  
**MORE** plans offer your family the most comfortable layout for life on the road.

38 QBA



38 QRA



Note: If optional furniture combinations are selected, window locations may vary from diagram shown.

## INTERIOR DÉCOR

Now it's time to personalize your coach.

1

Start with our handcrafted hardwood cabinetry available in your choice of luxury finishes: Cordovan, English Chestnut or Mocha.

### CABINETS



CORDOVAN



ENGLISH CHESTNUT

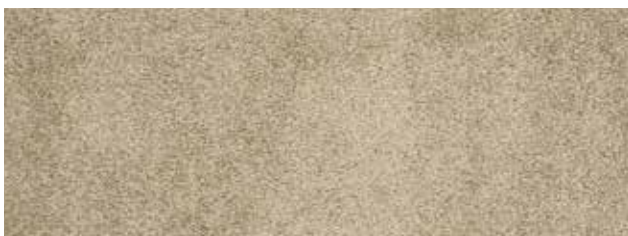


MOCHA

### STANDARD FLOORING



TILE



CARPET

2

Then, add texture with your choice of designer fabric suites: Cocoa, Raw Silk or Truffle. All fabrics are treated for stain resistance.

### COCOA

#### LIVING AREA & KITCHEN



PILLOWS



VALANCE

#### KITCHEN



BACKSPLASH

#### COUNTERTOP



STANDARD

#### SOFA & COCKPIT SEATS



STANDARD LEATHER

#### BEDROOM



## INTERIOR DÉCOR

Make your experience on the road all your own. Express yourself by choosing the interior appointments such as cabinet finishes, flooring and fabric textures for every part of your motorhome. In the 2017 RED, you'll be able to go in style no matter where you go.

### RAW SILK

#### LIVING AREA & KITCHEN



PILLOWS



VALANCE

#### KITCHEN



BACKSPLASH

#### COUNTERTOP



STANDARD

#### SOFA & COCKPIT SEATS



STANDARD LEATHER

#### BEDROOM



### TRUFFLE

#### LIVING AREA & KITCHEN



PILLOWS



VALANCE

#### KITCHEN



BACKSPLASH

#### COUNTERTOP



STANDARD

#### SOFA & COCKPIT SEATS



STANDARD LEATHER

#### BEDROOM



## FULL-BODY PAINT SCHEMES

### PREMIUM PAINT SYSTEM

Our eight-step full-body paint system features premium grade paints sealed with four layers of superclear coat with ultraviolet protection. An additional layer of scratch-resistant plastic coating protects the front of the coach, stairwell, and entry door lock.



MAROON CORAL



SILVER SAND



OCEANSIDE



SUNLIT SAND



ROCKY MOUNTAIN BROWN



WHITE MAHOGANY



**AUTOMOTIVE**

- Standard on All Models:**
- Raised Rail Chassis Frame
  - Full Air Brakes
  - Air Ride Suspension
  - Exhaust Brake

**CHASSIS**

Freightliner® Rear Engine Diesel Chassis:	33 AA	37 PA	38 QBA	38 QRA
Cummins ISB 6.7-liter Electronic Diesel, Turbocharged, Aftercooled Engine	S	S	S	S
Allison 3000 MH 6-speed Automatic Transmission with Lock-up	S	S	S	S
Peak HP 360 HP @ 2,600 RPM	S	S	S	S
Peak Torque (lb. – Ft. Max Net) 800 @ 1,800 RPM	S	S	S	S
GAWR – Front	12,000 lb	12,000 lb	12,000 lb	12,000 lb
GAWR – Rear	20,000 lb	20,000 lb	20,000 lb	20,000 lb
GVWR	32,000 lb	32,000 lb	32,000 lb	32,000 lb
GCWR	42,000 lb	42,000 lb	42,000 lb	42,000 lb
Wheel Base	198"	252"	252"	252"
Tire Size	275/80R22.5	275/80R22.5	275/80R22.5	275/80R22.5
Fuel Tank (Gallons) – Dual Fuel Fill	100	100	100	100
DEF Tank* (Gallons)	13	13	13	13
Alternator Amps	160	160	160	160
Trailer Hitch Capacity	10,000 lb	10,000 lb	10,000 lb	10,000 lb

\*Diesel Exhaust Fluid (DEF) is the active component used in Selective Catalytic Reduction (SCR) engines to reduce nitrogen oxide emissions by 90% to meet EPA standards.

**WEIGHTS & MEASURES**

Overall:	33 AA	37 PA	38 QBA	38 QRA
Overall Length (Approximate**)	35' 2"	39' 2"	39' 8"	39' 8"
Overall Height with Roof Air (Maximum)	12' 10"	12' 10"	12' 10"	12' 10"
Interior Height	84"	84"	84"	84"
Overall Width	101"	101"	101"	101"
Interior Width	96"	96"	96"	96"
Fresh Water (Gallons)	90	90	90	90
Black Water (Gallons)	50	50	50	50
Grey Water (Gallons)	70	70	70	70
LPG Tank (Gallons; can only be filled to 80% capacity)	24	24	24	24
Basement Storage (Cubic Feet – Approximate)	83.75	119	160	160
Minimum Garage Height	13'	13'	13'	13'

\*\*The approximated coach lengths do not include side-view mirrors and rear ladders.

**GENERAL EXTERIOR**

- Standard on All Models:**
- Fiberglass Front & Rear Caps
  - Double Electric Step
  - Color Back-up Monitor
  - Tinted One-piece Windshield
  - 1/4" Thick Single Pane Windows
  - 110 V Exterior Receptacle
  - 8.0 kw Onan® Generator
  - Convenient Access Doors with Gas Shocks
  - Undercoating
  - Horizontal Mounted Wipers
  - Single Handle Lockable Storage Door Latches
  - Roof Ladder
  - Heated Power Mirrors
  - Heated Holding Tank Compartment
  - External Tripod Satellite Hook-up
  - Exterior Patio Light
  - Four 6 V Auxiliary Batteries
  - Exterior Storage Compartment Lights
  - Power Patio Awning
  - Digital TV Antenna
  - Chrome Mirror Heads with Integrated Turn Signal Cameras
  - Automatic Entry Door Awning
  - Cable TV Ready
  - Full-body Paint
  - Awning(s) over Slide-outs
  - 50 Amp Service
  - Hydraulic Automatic Leveling Jacks
  - Aluminum Wheels
  - Black Holding Tank Flush System
  - Front Cap Protective Film
  - Extraordinaire™ AC System
  - Exterior Rinse Hose/Shower
  - Exterior TV
  - Two Low Profile Roof ACs (13,500 BTUs)
  - Gravity Water Fill

Available Options:	33 AA	37 PA	38 QBA	38 QRA
In-Motion Satellite Dish***	○	○	○	○
Air Horns	○	○	○	○
Two Low Profile Roof ACs with Heat Pumps (15,000 BTUs)	○	○	○	○
Mud Flap with Diffuser	○	○	○	○
Exterior Slide-out Tray****	○	○	○	○
Prep for Solar Panel	○	○	○	○
CB Antenna	○	○	○	○

\*\*\*High-definition programming is not available on a dome satellite antenna unless you subscribe to DISH Network®.

\*\*\*\*Exterior Slide-out Tray & Central Vacuum Cleaner cannot be optioned together.

**GENERAL INTERIOR**

- Standard on All Models:**
- High Gloss Raised Panel Hardwood Cabinet Doors
  - Solid Wood Cabinet Fascias
  - Soft Touch Vinyl Ceiling
  - TV in Entertainment Center
  - Ceramic Tile Flooring in Living Room & Bath Area
  - Treated Carpet & Fabrics
  - Ball Bearing Drawer Slides
- Chainless Solar & Privacy Shades
  - Power Roof Vents
  - Tank Level Monitor System
  - Smoke Detector
  - 10-gallon DSI Gas/Electric Water Heater
  - Power Step Well Cover
  - 2000 Watt Sine Wave Inverter
- Carbon Monoxide Detector
  - LED Lighting
  - Extraordinaire™ AC System
  - LPG Leak Detector
  - Home Theater Surround Sound System (Includes DVD Player)

**Available Options:**

	33 AA	37 PA	38 QBA	38 QRA
Cordovan Solid Cabinet Doors & Drawer Fronts	○	○	○	○
English Chestnut Solid Cabinet Doors & Drawer Fronts	○	○	○	○
Mocha Solid Cabinet Doors & Drawer Fronts	○	○	○	○
Stacked Washer/Dryer	○	○	○	○
Central Vacuum Cleaner*****	○	○	○	○

\*\*\*\*\*Exterior Slide-out Tray & Central Vacuum Cleaner cannot be optioned together.

**COCKPIT**

- Standard on All Models:**
- Tilt Steering Wheel
  - Dual Dash Fans
  - Wood Drawers in Dash
  - Lighted Instrument Panel
  - CD Player & AM/FM Stereo
  - Overhead TV
- Manual Solar & Privacy Shades on Side Windows
  - Power Leatherette Driver & Passenger Seats
  - Power Solar & Privacy Windshield Shades
  - Satellite-Ready Radio (Subscription Required)
  - 12 V Dash Receptacle
  - 12 V Disconnect Switch
- USB Dash Receptacle
  - Fire Extinguisher
  - Adjustable Seatbelt Brackets
  - Power Passenger Seat Footrest

**Available Options:**

	33 AA	37 PA	38 QBA	38 QRA
In-dash Navigation System	○	○	○	○

**LIVING AREA/DINETTE**

**Available Options:**

	33 AA	37 PA	38 QBA	38 QRA
Leatherette Booth Dinette on Passenger Side	S	S	NA	NA
Leatherette Booth Dinette on Driver Side	NA	NA	S	NA
Leatherette DE Sofa/Sleeper on Driver Side	NA	NA	○	NA
Leatherette Hide-A-Bed on Driver Side	NA	NA	S	NA
Leatherette Hide-A-Bed Sofa/Sleeper & One Recliner on Driver Side	S	S	NA	NA
Leatherette L-Shaped Sofa and Recliner on Driver Side	○	○	NA	NA
Leatherette Hide-A-Bed Sofa/Sleeper on Passenger Side	NA	NA	NA	S
Leatherette C-Shaped Dinette on Driver Side	NA	NA	NA	S
Leatherette U-Shaped Dinette on Passenger Side	NA	○	NA	NA
Leatherette DE Sofa/Sleeper on Passenger Side	NA	NA	S	NA
Dinette with Computer Workstation on Passenger Side	○	○	NA	NA
Dinette with Computer Workstation & One Recliner on Driver Side	NA	NA	NA	○
Dinette with Computer Workstation on Driver Side	NA	NA	○	NA
Fireplace Below TV in Entertainment Center	○	○	NA	○

**BATH**

- Standard on All Models:**
- Medicine Cabinet
  - Skylight in Shower & LED Light
- Molded Fiberglass One-piece Shower
  - Solid Surface Vanity Top
- Roof Vent Fan

**Available Options:**

	33 AA	37 PA	38 QBA	38 QRA
Tub (in Place of Shower)	NA	NA	○	○

All options may not be available in every model. Because of progressive improvements, specifications, standard & optional equipment are subject to change without notice or obligation. For a complete & up-to-date list of available options & specifications, as well as information on Tiffin's full line of motorhomes, visit [tiffinmotorhomes.com](http://tiffinmotorhomes.com).

**KITCHEN**

- Standard on All Models:**
- Double Bowl Kitchen Sink with Single Lever Satin Nickel Faucet
  - Solid Surface Backsplashes
  - Microwave with Exterior Venting
  - Solid Surface Galley Countertop
  - 3-burner Recessed Cooktop with Gas Oven
  - Large 2-door Refrigerator with Pantry
  - Solid Surface Cooktop Cover

Available Options:	33 AA	37 PA	38 QBA	38 QRA
Convection Microwave	○	○	○	○
3-burner Cooktop with Convection Microwave	○	○	○	○
2-door Gas/Electric Refrigerator with Icemaker	○	NA	○	○
4-door Gas/Electric Refrigerator with Icemaker	○	NA	○	○
Solid Wood Refrigerator Panels (2-door Refrigerator)	○	NA	○	○
Residential Refrigerator	○	S	NA	○
Backsplash Upgrade	○	○	○	○

**BEDROOM**

- Standard on All Models:**
- Wardrobe with Automatic Light
  - TV
  - Inner Spring Queen Mattress (60" x 80")
  - Bed Comforter with Throw Pillows
  - Carpeted Flooring
  - Solar/Privacy Shades

Available Options:	33 AA	37 PA	38 QBA	38 QRA
Memory Foam King Bed Mattress (72" x 80")	○	○	NA	○
Bunk Beds (30" x 72") with Bunk Ladder/Convertible Wardrobe	NA	NA	S	NA
DVD Monitors in Bunk Beds	NA	NA	○	NA
Bedroom Ceiling Fan	○	○	○	○

The 2017 RED features these Tiffin innovations:



The design of every Tiffin floor plan must meet four essential criteria: Maximum space. Optimal organization. Relaxation plus. Elegant atmosphere.



This Tiffin coach will surpass a competitor's model of equivalent size in the quantity and quality of storage.



## The Tiffin Five-Star Warranty. The best in the business, bar none.

At Tiffin Motorhomes, we build for quality first and foremost, limiting our production to just 12 coaches a day to ensure meticulous craftsmanship. It may not be the most business-savvy way to run a company but it is the best way. By investing the time and effort to do things right, we want you, as a Tiffin owner, to have the utmost confidence in your coach, as well as a peace of mind you won't find with other manufacturers. You see, not only do we stand proudly behind our product, we stand behind you as well.

★ 10

YEAR  
CONSTRUCTION  
WARRANTY

The structural integrity of the welded frame of entire coach is warranted for 10 years.

★ 5

YEAR  
DELAMINATION  
WARRANTY

We guarantee against all exterior fiberglass delamination or wall separation for 5 years.

★ 1

YEAR  
COMPREHENSIVE  
WARRANTY

Your coach is warranted against defects in materials and workmanship for 12 months, or 12,000 miles of use.

★ 1

YEAR  
COACH ROADSIDE  
SERVICES

Available through Coach-Net, the country's largest RV emergency road service, this program provides 24/7 access to responsive roadside and technical assistance.

★ ONGOING  
OWNER  
SUPPORT

No other motorhome company can compare with Tiffin's exceptional customer service.

Email us at [service@tiffinmotorhomes.com](mailto:service@tiffinmotorhomes.com) or call: 256/356.8661.



### A FAMILY BUSINESS BUILT AROUND YOURS.


The strong relationships we've built with you, our customers, are the heart and soul of our company. Now, with social media, we can connect more than ever before. We invite you to follow us on Facebook, Twitter, Instagram, and Pinterest.


LEFT TO RIGHT: VAN TIFFIN, LEX TIFFIN,  
BOB TIFFIN, TRENT TIFFIN, AND TIM TIFFIN

GO TO [TIFFINMOTORHOMES.COM](http://TIFFINMOTORHOMES.COM)

Visit us on the web for more information on the 2017 RED and all 2017 Tiffin Motorhomes, along with the latest product and specification updates.

FOR PARTS & SERVICE CALL 256/356.8661

 [FACEBOOK.COM/TIFFINMOTORHOMES](http://FACEBOOK.COM/TIFFINMOTORHOMES)

 [TWITTER.COM/TIFFINMOTORHOME](http://TWITTER.COM/TIFFINMOTORHOME)

 [INSTAGRAM.COM/TIFFINMOTORHOMES](http://INSTAGRAM.COM/TIFFINMOTORHOMES)

 [PINTEREST.COM/TIFFINMOTORHOME](http://PINTEREST.COM/TIFFINMOTORHOME)

Some interior furnishings not included. Unless where noted, all content ©2017 Tiffin Motorhomes, Inc. Allegro®, Allegro Breeze®, Allegro Red®, Phaeton®, Allegro Bus®, Zephyr®, Roughing It Smoothly®, Open Road®, PowerGlide®, and Pusher® are registered trademarks of Tiffin Motorhomes, Inc. All rights reserved.