

Blue Ridge

by Forest River



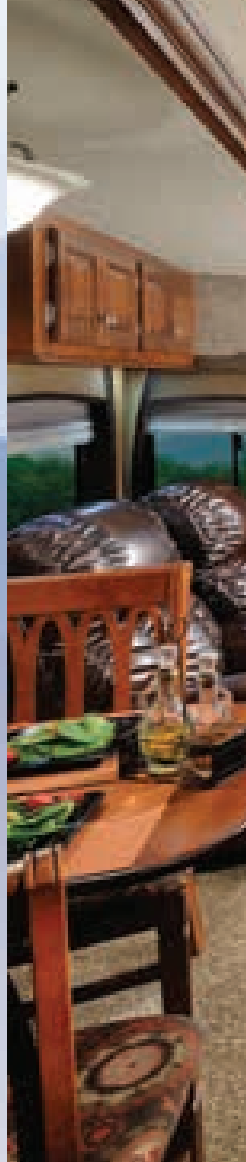
BLUE RIDGE FIFTH WHEELS - Exceptional Living



EXPERIENCE
Exceptional
Living

Blue Ridge

Relax and Enjoy the View... The New Blue Ridge is designed with airy, well-planned living spaces that accommodate family and friends on long leisurely vacations. Blue Ridge standard features include cherry hardwood cabinet doors, satin nickel hardware, solid surface countertops with sink covers, and stainless steel kitchen sinks with a pull-out faucet. All Blue Ridge models feature flush floor slide outs for safety and easy maneuverability throughout the coach. **Blue Ridge - Get Away With Style**



3600 RS

Blue Ridge floorplans are all loaded with ample storage. Built-in wine and spice racks keep countertops tidy. A handy bulletin board with key hooks conceals the command center. (Shown with an optional 12 cu. ft., four door refrigerator.)



TERRA COTTA



- A
-]- B
- C
-]- D

STEEL



- A
-]- B
- C
-]- D

PEPPERCORN



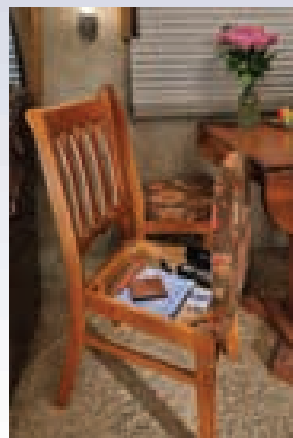
- A
-]- B
- C
-]- D

CREAM

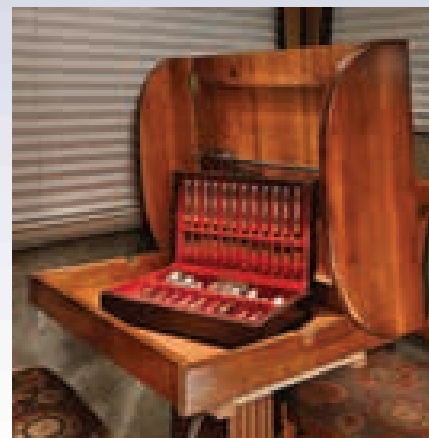


- A
-]- B
- C
-]- D

3600 RS Textured glass overhead storage doors add a contemporary designer touch. Mosaic tile in all Blue Ridge kitchens complement the solid surface countertops. LED lighting throughout each floorplan brightens up living areas. Standard convection microwave oven, under stove storage and Terra Cotta decor shown above with bonded leather seating. (Theater seating is available as an option.)



Hide games, placemats and more in this innovative under table top storage area. Extendable dual leaves and a sliding base provide extra room. There's even storage under the seats!



KEY: A Sofa & Recliner, B Living Area Windows, C Dinette Cushions, D Bedroom Fabrics

Blue Ridge



3025RL *Imagine serving breakfast in this beautiful Blue Ridge kitchen equipped with these standards: a 40" TV, electric fireplace, convection/microwave, free standing dinette and a cozy island with two bar stools. (Theater seating is available as an option.)*



Blue Ridge's spacious radius roof provides plenty of headroom and accommodates a ceiling fan. Overhead storage has stylish textured glass doors.



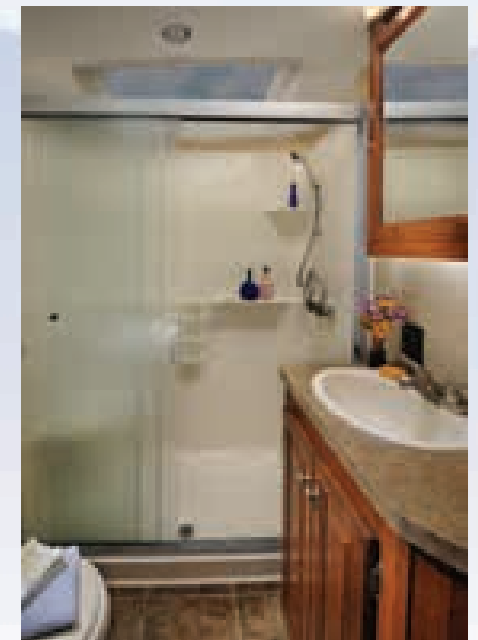
3025 RL Broad picture windows and facing flush-floor slide outs create an open, airy atmosphere. The 80" hide-a-bed sofa with air mattress and recliners are shown in Cream bonded leather.

EXPERIENCE Exceptional Living

3025RL This exceptional bedroom has a queen bed, generous dresser drawers and a large closet with sliding mirrored doors, plus, is equipped with a washer and dryer hook-up. Dual electrical supply permits both the washer and dryer to work simultaneously. (Shown with an optional 32" TV.)

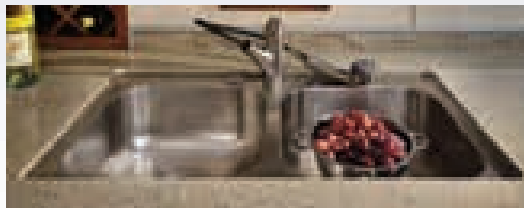


3025 RL This well lit bathroom features a 30" x 60" Mega shower with a skylight and an extended height vanity.

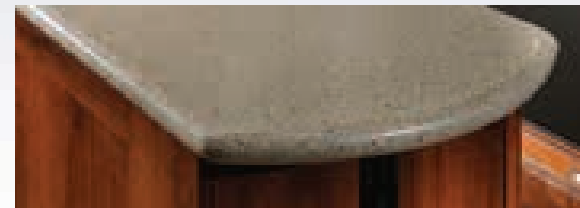




Blue Ridge



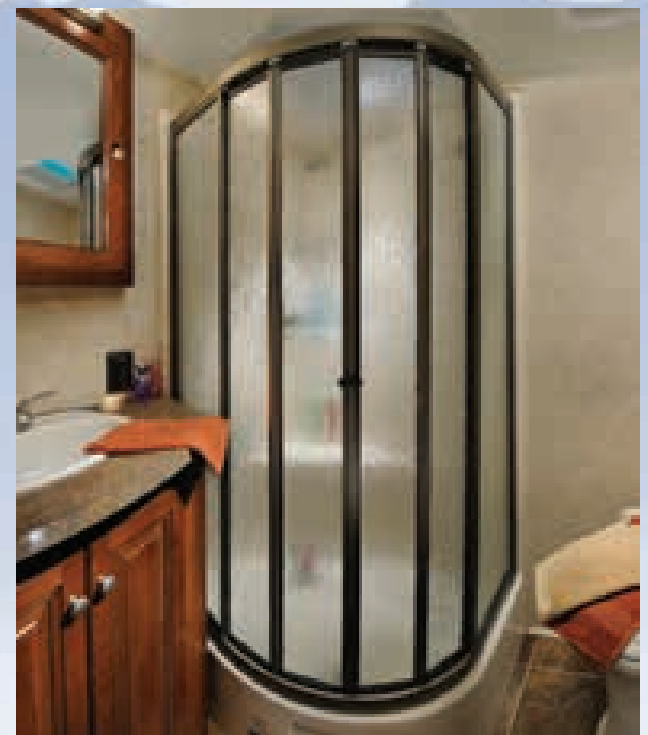
A stainless steel dual bowl sink with a pull-out faucet is standard on all Blue Ridge models.



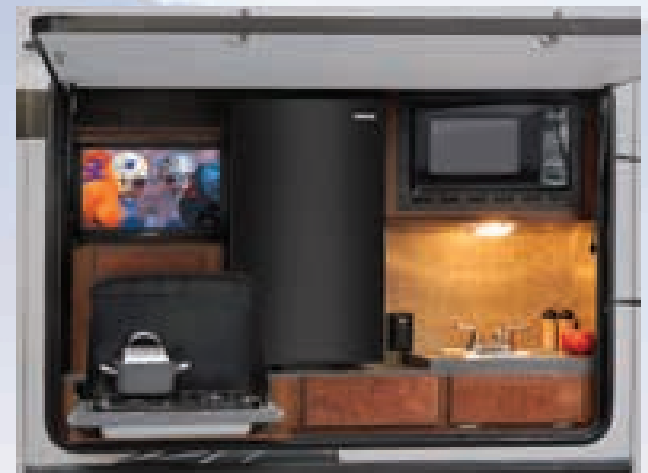


3125RT This storage friendly kitchen's features include a solid surface countertop, convection microwave and three-burner stove with a 22 cu. in. oven. After dinner, view the sunset through the oversized picture window, or watch the game on the 40" TV with an articulating swing arm. An electric fireplace and bonded leather upholstery create a comfortable place for conversation. Terra Cotta decor. Optional bonded leather theater seating is available.

Standard solid surface countertops look great and last.



3125RT This roomy bath features a one-piece fiberglass radius shower with a built-in seat and a textured glass door. A skylight lets in natural light.



3125RT Head outside and cook up a good time. This outdoor kitchen has a handy refrigerator, sink, microwave, a two-burner gas range, storage drawers and a 19" TV so you can keep your eye on the score.



3710 BH This conversation friendly kitchen is the perfect place to visit with a friend by the fire while dinner simmers on the stove. Shown here with a standard appliance package including a convection microwave, stove, eight cu. ft. refrigerator and a 32" TV. Cherry hardwood cabinet doors create a warm inviting atmosphere. A double stainless steel sink and contemporary glass tile backsplash makes clean up a breeze.



3710BH This family-friendly bunkhouse has flush-floor slides and ample room to sleep five happy campers. Fold-down bunks, a trundle and an optional hide-a-bed sofa with an air mattress stow away. The storage area features two wardrobes with sliding mirrored doors, netted overhead storage for pillows and blankets, plus plenty of drawer space. The bunk house also has an adjoining half bath. All these features are standard! A 32" LCD with an articulating swing arm is shown.



3710BH Entertaining is a breath of fresh air with this convenient outdoor kitchen featuring a two-burner cooktop, refrigerator, a 32" TV and cabinet storage.

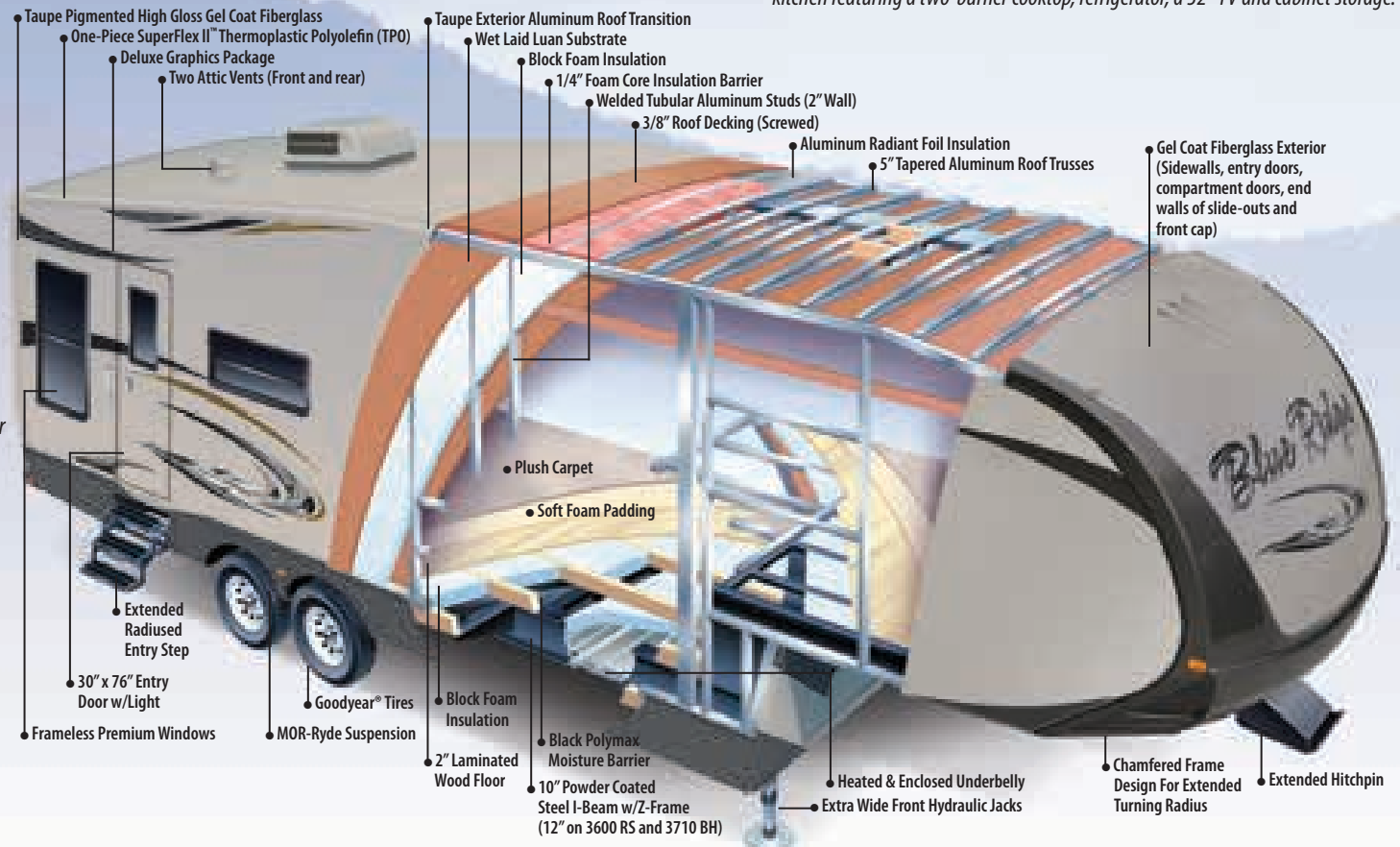
Blue Ridge



The new two-color aerodynamic front end has LED lights for easy hitch hook-up.

Calculated R-Values

Sidewalls: Block foam (R9) ● Roof: 2 layers of R7 batt (Fiberglass)(R24) and radiant foil insulation (R38) ● Main Floor: 2 layers of R7 batt (Fiberglass) (combined with sub=R38) and radiant foil insulation (R38) ● Sub Floor: 1/4" honey combed plastic with 2 layers of R7 batt (Fiberglass) ● Front Wall: Fiberglass insulation and radiant foil insulation (R38) ● End Wall: Block foam (R9)





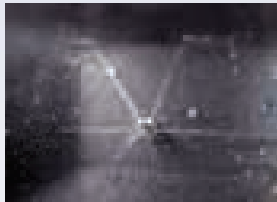
Control slides, electric front and rear jacks, awnings and patio light from the ALTA remote. (Deluxe Value package.)



Sleek, frameless tinted windows help maintain interior temperature. (Dual pane option also available.)



Dometic One-Touch electric awning with adjustable arms.



Quickly and easily flush the black tank.



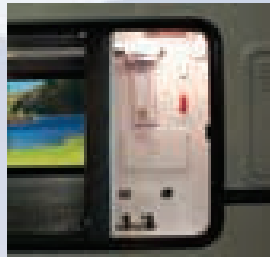
Slam-Latch baggage doors.



Whole unit water filter removes unpleasant odors and tastes.



MOR/ryde CRE/3000 compression rubber equalizer system for smoother towing.



Hook up utilities, flush tanks and change the water filter from one easy access universal docking station. Includes hot and fresh water bypass valves.



An easy access, full size Goodyear™ spare tire is located in the spacious pass-thru storage area, not under the unit like the competition.



Built with durable gel coated, vacuum bonded, laminated fiberglass sidewalls, end walls and roof on all slide outs.

STANDARD FEATURES

INTERIOR

- Solid hardwood raised panel glazed cabinet doors & drawers
- Lumbercore vinyl wrapped cabinet frames (Stiles)
- Crown molding
- Solid wood (Baltic birch) drawer boxes
- Ball bearing, full extension drawer glides
- Congoleum "Designer Care" flooring (3 Year warranty)
- Tri-color nylon twist residential carpet
- Satin nickel cabinet hardware & accents
- Satin nickel plumbing fixtures
- Decorative slide room fascia frame
- Decorative solid wood frame entry door
- Solid wood exit assist handle
- Fireplace (N/A 2950 RK)

GALLEY

- Solid surface polished counter tops w/undermount sink
- Spice rack (Most models)
- Wine rack (Most models)
- Double bowl stainless steel kitchen sink
- High rise "J" spout kitchen faucet
- Hardwood refrigerator fronts
- Fantastic fan w/rain sensor

LIGHTING

- LED lighting throughout
- Semi flush decorative ceiling light above dinette
- Ceiling fan
- Exterior LED docking lights (2-Mounted into front cap)
- Exterior security lights (2)
- Exterior amber patio light

FURNITURE & WINDOW COVERINGS

- Swivel/glider recliners (2) (N/A 3710 BH; opt 2950 RK)
- Free standing dinette table w/dual leafs & 4 chairs w/flip up storage
- Hide-a-bed sofa w/queen air mattress
- Bonded leather sofa & recliners
- Booth dinette
- Day/night pleated shades
- Designer fabric window treatments (Where available)

BATHROOM

- 12 Volt power roof vent
- HPL vanity top w/oversized residential bowl
- Porcelain toilet w/foot flush
- "Mega" 30" x 60" fiberglass molded shower
- Glass shower door
- Shower skylight/dome
- Adjustable shower head

- Medicine cabinet w/mirrored door
 - Towel bar
 - Dedicated heat & AC duct
- ### BEDROOM
- Premium, innerspring mattress
 - Queen bed (60" x 80") (King is standard on 3600 RS, 3710 BH)
 - Designer headboard, bedspread, pillows & sham
 - Full-height hanging wardrobe
 - French mirrored closet doors
 - Washer/dryer prep
 - Shoe caddy
 - Cubby storage
 - Chest of drawers
 - Underbed storage
 - (2) Bedside windows in slide-out
 - (2) Reading lights w/individual controls

APPLIANCES

- 8 cu. ft. double door refrigerator
- 3 Burner, high output range w/22" oven
- Range cover
- 30" Convection/microwave oven
- 42K BTU LP furnace
- Wire & frame for 2nd AC
- 15K Ducted AC w/quick cool feature
- 10 Gal. gas/electric DSI water heater
- "Shurflo" On-demand high output water pump (3g/min @ 55 PSI)
- Central vacuum system w/powered dust pan
- Dual 30 lb. LP bottles w/auto switchover
- LP leak detector
- Carbon monoxide detector

ELECTRONICS

- 5 Function remote control w/key fob
- Key fob operates slides, awning, patio light, front jacks & rear jacks
- 40" Toshiba LCD HD TV w/HD steel swing arm
- ASA/Jensen theater system
- Digital TV antenna w/signal booster
- Cable TV hook-ups (Main living & bedroom)
- Cable TV hook-up (Exterior garage bulkhead)
- Satellite prep (Roof mount at road side front mushroom cap)
- Nationally recognized electronic brands (Jensen & Toshiba)
- Exterior flip-down speakers

EXTERIOR

- High-gloss pigmented gel coat fiberglass exterior on all walls
- Front cap: Molded two color painted high gloss gel coat fiberglass w/LED light accents
- Front cap design: Engineered w/extended turning radius (Chamfered front)
- Laminated front bulkhead w/high gloss gel coat fiberglass

- Slam latch 1.5 in thick luggage doors w/high gloss get coat fiberglass
- Slide end walls: Laminated w/high gloss gel coat fiberglass
- 30" x 76" Entry & screen door w/high gloss gel coat fiberglass
- 45° Angled skirt
- Frameless premium windows
- Hydraulic slide room power
- Individual slide room selector switches
- Roof ladder
- Electric awning
- Entry assist handle (XL-Folding)
- Black exterior trim
- 2.5" Aluminum black belt rail w/caps (No exposed screws)
- Roto-cast spun seamless water/waste tanks
- PEX plumbing system
- Enclosed, insulated, heated underbelly (Forced air heat)
- Dual roof vents
- Slide room seal & gasket system
- Aluminum "H" frame slide room perimeter
- Dual neoprene squeegee seals
- Exterior & interior "D" seals
- Exterior "H" seal
- Utility docking compartment
- 12 Volt light
- 110 outlets (2)
- Outside shower (Hot & cold)
- Black tank flush system
- Fresh water & heater bypass valve
- Full coach water filtration system
- Winterizing bypass system
- Protected/insulated pull waste valves
- Waste hose storage tube
- Slam latch 1.5" luggage door

CHASSIS/FOUNDATION

- I-beam "Z" frame power coated chassis
- Chamfered frame technology
- 10" Beams (12" Beams: 3600 RS & 3710 BH)
- Dual 6K Axles (7K: 3600 RS & 3710 BH)
- Easy lube axles
- MOR/ryde suspension
- 8 Lug hubs
- Aluminum rims 16"
- Goodyear tires
- Spare tire (Inside storage mounted)
- Hydraulic front jacks
- Electric rear stabilizing jacks
- Triple steel entry steps
- Flush floor slide design w/steel ramp & glide bar (Main room slides)
- Hydraulic slide system w/2.5" steel rams
- Hydraulic pump station with manual override
- 18K Extended hitch pin

CONSTRUCTION

- Sidewalls: Aluminum welded frame 2" walls
- Roof: 5" Tapered aluminum trussed on 16" centers
- Front wall: Laminated aluminum welded frame
- Rear wall: Laminated aluminum welded frame
- Main floor: Wood laminated
- Bath/bed floor/deck: Aluminum welded frame
- Slide end walls: Aluminum welded frame, laminated
- Slide roof: Aluminum welded frame, laminated
- Slide floor: 1" Plywood

INSULATION

- Sidewalls: Block foam insulation
- Roof: Aluminum radiant foil insulation and fiberglass insulation
- Main floor: Block foam
- Sub floor: 1/4" honey combed plastic w/2 layers of R7 batt (Fiberglass)
- Front wall: Batt (Fiberglass) insulation
- End wall: Block foam insulation

ELECTRICAL SYSTEMS

- Centralized command center & monitor panel
- 70 Amp converter
- 50 Amp service
- Marine grade detachable 50 Amp power cord
- 12 Volt battery disconnect
- "Easy Diagnose" LED fuse indicator
- Battery prep box

OPTIONS

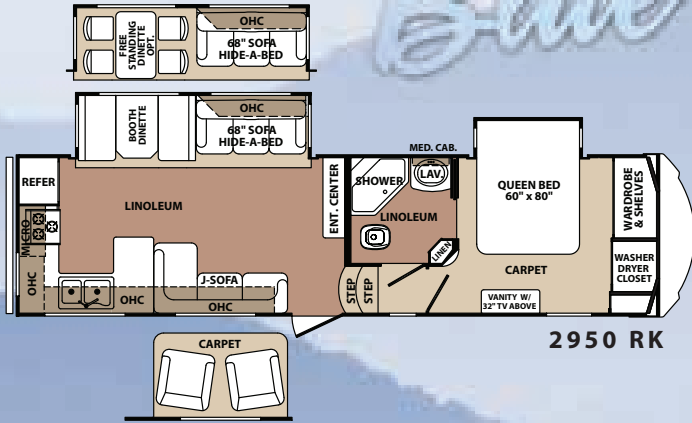
INTERIOR

- 12 Cu. ft. 4 door refrigerator (3600 RS only)
- Fantastic fan w/rain sensor in bedroom (N/A with 2nd AC)
- 32" LCD HD TV (Bedroom/Bunkhouse 3710 BH)
- Theater seats
- (2) Recliners IPO J-Lounge (2950 RK only)

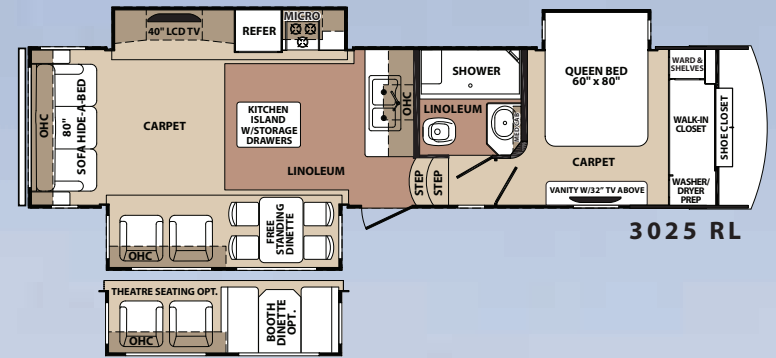
EXTERIOR

- "Level Up" one touch automatic 6-point hydraulic leveling system
- Dual pane frameless windows
- Generator prep
- Slide out awning toppers
- Low profile 13.5 ducted AC in bedroom
- TrailAir roto-flex extended hitch
- TrailAir air bag/shock pin box
- Outside entertainment center w/32" LED TV, DVD & iPod control
- Tank heating pads (Electric)
- Bike hitch

Blue Ridge



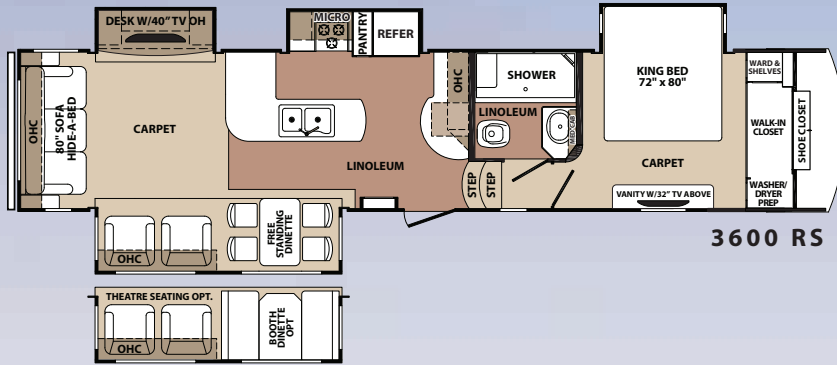
2950 RK



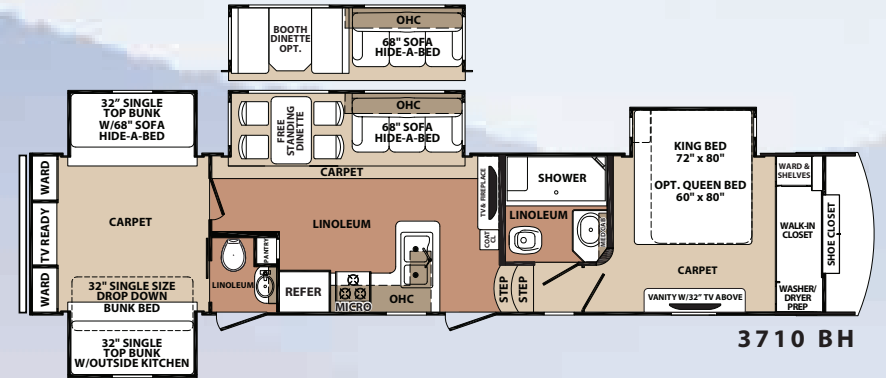
3025 RL



3125 RT



3600 RS



3710 BH

MODEL	2950RK	3025RL	3125RT	3600RS	3710BH
Overall Length	32' 4"	35' 6"	36' 3"	39' 10"	40' 7"
UVW	10,045	11,614	11,980	12,700	13,109
Hitch Weight	2,210	2,090	1,860	2,210	1,930
GAWR	12,000	12,000	12,000	13,680	13,680
GVWR	14,210	14,090	13,860	15,890	15,610
Cargo Carrying Capacity	4,165	2,476	1,880	3,190	2,501
Exterior Height	13' 0"	13' 0"	13' 0"	13' 0"	13' 0"
Exterior Width	98"	98"	98"	98"	98"
Interior Height (Bedroom)	81"	81"	81"	81"	81"

MODEL	2950RK	3025RL	3125RT	3600RS	3710BH
Interior Height (Living area)	106 1/2"	106 1/2"	106 1/2"	106 1/2"	106 1/2"
Tire Size	235/80R16E	235/80R16E	235/80R16E	235/80R16E	235/80R16E
Brake Size	12"	12"	12"	12"	12"
Fresh Water	73 gal.	73 gal.	73 gal.	73 gal.	73 gal.
Waste Water	120 gal.	120 gal.	120 gal.	120 gal.	160 gal.
Water Heater	10 gal.	10 gal.	10 gal.	10 gal.	10 gal.
Furnace	42000 BTU	42000 BTU	42000 BTU	42000 BTU	42000 BTU
Patio Awning	17'	17'	19'	19'	19'
Exterior Storage (Cu. ft.)	102	102	102	102	102

Blue Ridge



EXPERIENCE Exceptional Living

Indoors *and* Outdoors

Blue Ridge is designed to bring people together. Inside, this family-friendly bunkhouse has flush-floor slides, plenty of storage space and ample room to sleep five happy campers. Outside, there's a kitchen with a two-burner cooktop, refrigerator and TV, so you can keep an eye on the game and dinner!



Learn More
Scan this barcode using a QR Reader on your smart phone to learn more about Forest River.

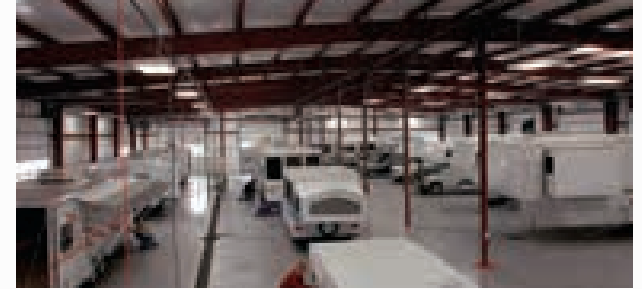


A Berkshire Hathaway company.

Blue Ridge Division
58277 State Road 19 South • Elkhart, IN 46517
(574) 296-7700
www.forestriverinc.com/blueridge
www.forestriveraccessories.com



All illustrations and specifications contained in this literature are based on the latest product information at the time of publication. Forest River, Inc. reserves the right to make changes in prices, colors, materials, equipment and specifications at anytime, without notice, and assumes no responsibility for any error in this literature. All units are shipped F.O.B. point of manufacture.
©1/13 ©Forest River, Inc. 2012 Blue Ridge



PRE-DELIVERY INSPECTION FACILITY

20,000 square feet of quality assurance. The bare essentials for a premium product. This state-of-the-art facility gives immediate daily feedback to production for quality assurance in every unit built.



Forest River, Inc. encourages our customers to purchase their Forest River products from a local dealership whenever possible for the following reasons:

- 1) Forest River, Inc. dealers are independently owned and operated businesses so priority service and scheduling is at their discretion and is often provided to customers that purchased their unit at that dealership.
- 2) Purchasing locally allows customers to establish meaningful relationships with a dealer, enhancing the RV experience through assistance with product questions, user tips or RV regulations for your state or country, and much more!
- 3) Canadian customers must meet requirements to bring an RV purchased out of the country to their home. These requirements may involve additional inspections and certifications, taxes and fees. Your local Canadian Dealer is a professional at meeting these requirements.
- 4) Scheduling timely warranty repairs and adjustments through a local dealership provides far greater flexibility and convenience to you, the customer!

It is the goal of Forest River, Inc. that all of our RV owners fully enjoy the RV experience and that customer satisfaction meets or exceeds their expectations!

24/7 EMERGENCY ROADSIDE ASSISTANCE

For a worry-free ownership experience Forest River includes one year of Coach-Net RV Technical & Roadside Assistance with each RV purchase. Whether new to the RV lifestyle or an experienced RV enthusiast, Forest River owners have 24/7 access to technical, operational and emergency road service coverage throughout the US & Canada. Coach-Net's fast, dependable service is just a phone call away.

Coach-Net®

RV Technical & Roadside Assistance

Your BLUE RIDGE Dealer