

CLASS-C

WAYFARER

MODEL YEAR 2023 | PRODUCT UPDATES

Initial MY2023 Model Change Plans, Subject to Change in Full Production

Date Revised: 01/24/22

TIFFIN

20
23

What's New Summary - Wayfarer

WHAT'S NEW

- Generation 5 Paint Schemes
- Sea Mist and 50th Anniversary Exterior Paint Color Packages
- Maple Cabinetry Now Available
- 50th Anniversary Decal
- Night and Day Shades
- Redesigned Galley
- Closet Pull Out on 25 LW
- Flush Mounted Valances
- Ports for DVD Player and Other Devices
- Blackout, Snap Cab Curtains for Bunk
- Chrome Hardware Standard
- Redesigned Sewer Bay
- 30-gallon Fresh Tank Capacity on 25 RW & 25 JW
- Entry Lights on Driver and Passenger Sides
- All-electric Coach Option
- More Convenient Microwave Location on 25 RW
- SmartPlug® Detachable 30-Amp Shore Power Cord

NO LONGER AVAILABLE

- 25 SW Floorplan
- Generation 3 Paint Schemes
- Sterling Fabric Suite
- Harmony Exterior Paint Color Package
- Acier Gray/Chateua and Russet Cabinetry
- Blu-Ray Player

Premium Paint System

Our eight-step, full-body paint system features premium grade paints sealed with three layers of clear coat with ultraviolet protection. An additional layer of high-performance film protects the front of the coach and select areas.

Initial MY2023 Model Change Plans, Subject to Change in Full Production

Images shown are representations of paint layouts only and do not reflect all exterior features or options. Colors shown may slightly differ from colors on actual product.



50TH ANNIVERSARY

NEW

Generation 4 Paint Schemes



G4 SILVER SAND



G4 SAND DRIFT



G4 SEA MIST

NEW



G4 OBSIDIAN

Generation 5 Paint Schemes



G5 SILVER SAND

NEW



G5 SAND DRIFT

NEW



G5 SEA MIST

NEW



G5 OBSIDIAN

NEW

Optional Floor Plans



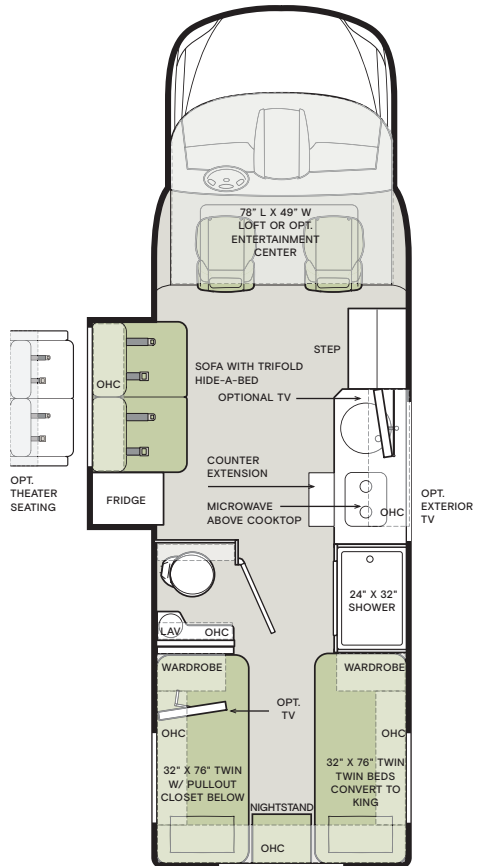
The design of every Wayfarer floor plan must meet four essential criteria: Maximum space, Optimal organization, Relaxation plus, and Elegant atmosphere. Tiffin's MORE Plans offer your family the most comfortable layout for life on the road.

If optional furniture combinations are selected, window locations may vary from diagram shown.

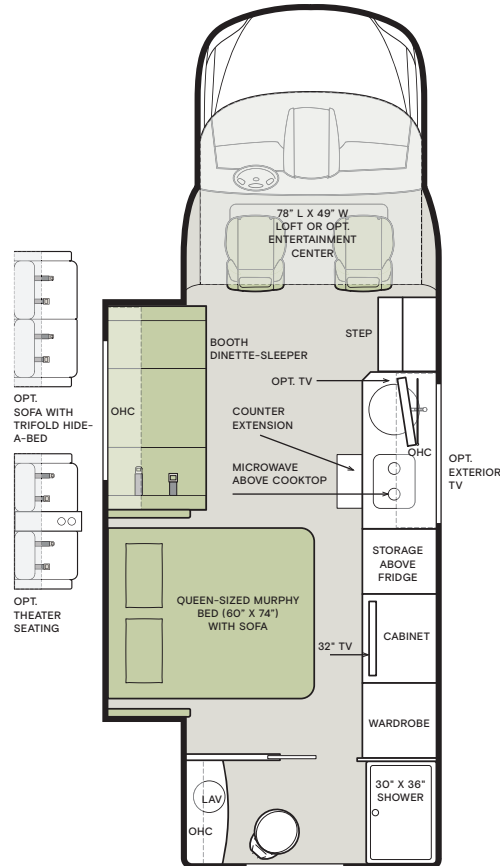
All options may not be available in every model. Because of progressive improvements and specifications, standard and optional equipment are subject to change without notice or obligation.

For a complete and up-to-date list of available options and specifications, visit tiffinmotorhomes.com.

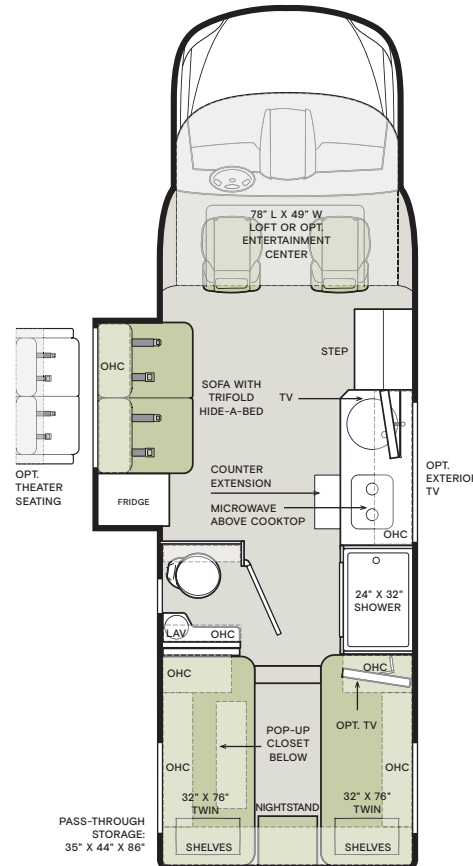
25 TW



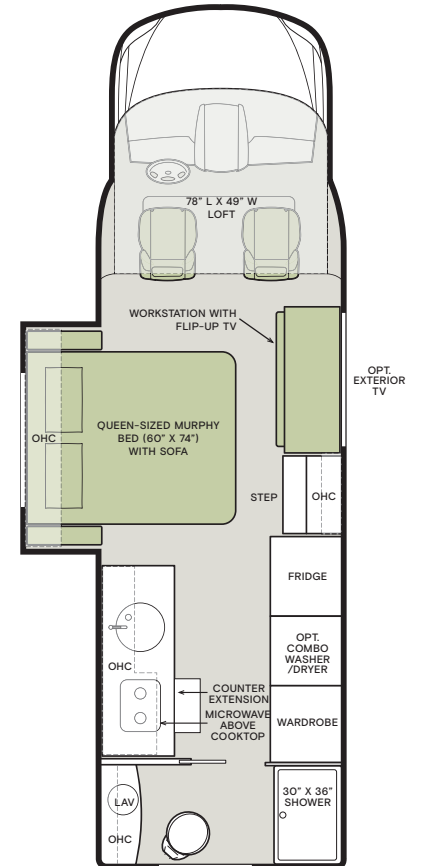
25 RW



25 LW



25 JW



NO LONGER AVAILABLE

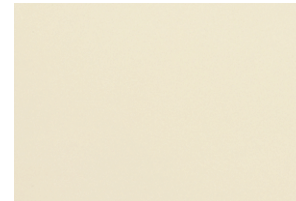
• 25 SW Floor Plan

Interior Décor

Make it all yours. Personalize your décor experience with the Wayfarer's customization options. The Wayfarer's luxury design options allow you to arrive and live in style, wherever your travels and adventures take you.

Colors of interior decor options shown may vary from colors on actual product.

CABINETS



LINEN

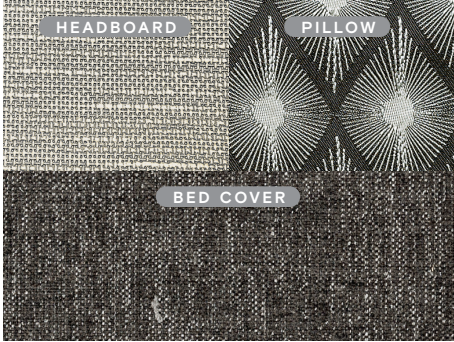
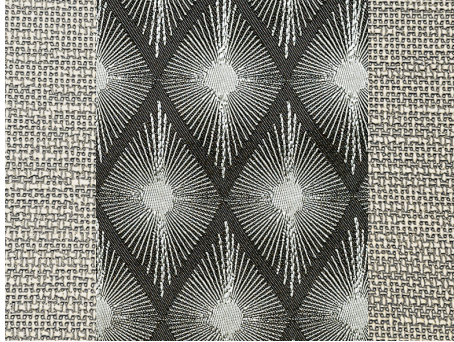






SANDSTONE





SHADOW

MINK

| | |
|---|--|
|  <p>HEADBOARD PILLOW BED COVER</p> |  |
| BEDROOM | WINDOW TREATMENT |
|  |  |
| COUNTERTOP | FURNITURE |
|  |  |
| FLOORING | WALLCOVERING |

CHAMPAGNE

| | |
|---|---|
|  <p>HEADBOARD PILLOW BED COVER</p> |  |
| BEDROOM | WINDOW TREATMENT |
|  |  |
| COUNTERTOP | FURNITURE |
|  |  |
| FLOORING | WALLCOVERING |

Specifications, Features, and Options

KEY : S : Standard Feature | O : Optional Feature; Additional costs may apply | D : Dependent; Availability is dependent on selection of another option | - : Not Available

| WEIGHTS AND MEASURES | 25 TW | 25 RW | 25 LW | 25 JW |
|--|--------|--------|--------|--------|
| DIMENSIONS | | | | |
| Overall Length (approx.) ¹ | 25' 8" | 25' 8" | 25' 8" | 25' 8" |
| Overall Width ¹ | 90" | 90" | 90" | 90" |
| Overall Height | 11' 4" | 11' 4" | 11' 4" | 11' 4" |
| Interior Height | 80" | 80" | 80" | 80" |
| Interior Width | 87" | 87" | 87" | 87" |
| Basement Storage (cubic feet, approx.) | 68 | 37 | 130 | 54 |
| Wheel Base | 170.3" | 170.3" | 170.3" | 170.3" |
| WEIGHT LIMITS | | | | |
| GAWR-Front (pounds) | 4,410 | 4,410 | 4,410 | 4,410 |
| GAWR-Rear (pounds) | 7,720 | 7,720 | 7,720 | 7,720 |
| GVWR (pounds) | 11,030 | 11,030 | 11,030 | 11,030 |
| Hitch Rating (pounds) ² | 5,000 | 5,000 | 5,000 | 5,000 |
| GCWR (pounds) | 15,250 | 15,250 | 15,250 | 15,250 |
| CAPACITIES | | | | |
| Fuel Tank (gallons) | 24.5 | 24.5 | 24.5 | 24.5 |
| DEF Tank (gallons) ³ | 4.8 | 4.8 | 4.8 | 4.8 |
| Fresh Water (gallons) | 38 | 30 | 32 | 28 |
| Grey Water (gallons) | 32 | 36 | 32 | 33 |
| Black Water (gallons) | 28 | 28 | 28 | 28 |
| LPG Tank (gallons) | 12 | 12 | 12 | 12 |

¹ The approximated coach width and length does not include side-view mirrors.

² Tow ratings and ability are subject to gross combined weight ratings on the tow vehicle. Hitch rated at 500-pound vertical tongue weight and includes 7-pin connector.

³ Diesel Exhaust Fluid (DEF) is the active component used in Selective Catalytic Reduction (SCR) engines to reduce nitrogen oxide emissions by 90% to meet EPA standards.

CHASSIS AND DRIVETRAIN

- Mercedes-Benz® 3500XD Dual Wheel Cutaway Chassis
- Two-wheel Drive
- Mercedes-Benz® 3.0-Liter V6 Turbo 188 HP Diesel Engine with 325 lb-ft Torque
- 220-Amp Alternator
- Mercedes-Benz® 7G-Tronic Automatic Transmission
- Aluminum Wheels
- Front and Rear LT 215/85 R16 Tires
- (1) 12-Volt Flooded Lead-Acid Chassis Batteries
- BigFoot® Hydraulic Leveling System
- SumoSprings® Ride Assist System
- Front Radiator
- Four Wheel ABS Brakes
- Manual Parking Brake
- Active Brake Assist (Collision Mitigation)
- Active Distance Assist Distronic® (Adaptive Cruise Control)
- Attention Assist
- Traffic Sign Assist
- Load Adaptive Electronic Stability Program (ESP)
- High Beam Assist
- Active Lane Keeping Assist

DRIVER'S COMPARTMENT

- Adjustable Driver and Passenger Seats
- Heated Driver and Passenger Seats
- Swivel Bases for Driver and Passenger Seats
- Leather Wrapped Steering Wheel with Integrated Controls
- Keyless Start
- Instrument Cluster with Color Display
- Tray for Smartphones with Charging Ports
- Windshield with Filter Band
- Rain Sensor for Windshield Wipers
- Automatic Headlights
- Emergency Call System
- Smartphone Integration For Apple Carplay® and Android™ Auto
- Mercedes-Benz® MBUX Multimedia System with 10.25" Touchscreen
- Ceiling Mounted Speakers
- Intelligent Navigation
- Auxiliary Start Switch
- Powered Windows
- Door-mounted Driver and Passenger Assist Handles
- Powered Door Locks
- Vinyl Floor Covering
- Privacy Curtain

| DRIVER'S COMPARTMENT OPTIONS | | 25 TW | 25 RW | 25 LW | 25 JW |
|------------------------------|--|---------|-------|-------|-------|
| Side-view Cameras | | O | O | O | O |
| Overhead Features | Front Overhead Bunk with Privacy Curtains ¹ | UPDATED | S | S | S |
| | Overhead Entertainment Center ² | O | O | O | - |

¹ Now includes new blackout snap curtains for bunk.

² Replaces front TV over galley.

ELECTRICAL

- 3.2-Kilowatt Diesel Generator
- 2,000-Watt Pure Sine Wave Inverter
- Spyder Controls Multiplex System
- (1) 15,000-BTU Air Conditioner
- Wall-mounted Thermostat with Built-in Temperature Sensor
- SmartPlug® Detachable 30-Amp Shore Power Cord **NEW**
- Prep for Satellite
- Prep for (1) Solar Panel ¹
- HD Over-the-air Antenna
- Park Cable and Ground Satellite Hook-up
- HDMI Ports **NEW**
- Mercedes-Benz® Wireless Internet Access
- 12-Volt Breaker Panel
- 12-Volt Disconnect Switch
- Strategically-placed 110-Volt Outlets
- Inverted Outlets for CPAP Machine in Bedroom
- Ground Fault Circuit Interrupter (GFCI) Outlets at Galley, Lavatories, and Sewer Bay
- 110-Volt Exterior Receptacle
- Surge Guard® Transfer Switch
- USB Receptacles Throughout Coach
- 30-Amp, 110-Volt House Service
- 12-Volt Engineered Wiring Harnesses

| ELECTRICAL OPTIONS | | 25 TW | 25 RW | 25 LW | 25 JW |
|------------------------------------|--|-------|-------|-------|-------|
| Heating and Cooktop Power Source | Liquid Propane (LP) Coach ² | S | S | S | S |
| | All-Electric Coach ³ | NEW | O | O | O |
| House Batteries | (2) 12-Volt Flooded Lead-Acid House Batteries | S | S | S | S |
| | (1) 12-Volt Lithium House Battery | O | O | O | O |
| Heat Sources | (1) 30,000-BTU Ducted Furnace ⁴ | D | D | D | D |
| | Elwell Timberline Hydronic Heating System ⁵ | D | D | D | D |
| In-motion Satellite Dish | | O | O | O | O |
| (1) Solar Panel | | O | O | O | O |
| Cellular Signal Booster NEW | | O | O | O | O |
| Wi-Fi Booster UPDATED | | O | O | O | O |

¹ Includes a docking port for an aftermarket solar panel.

² Propane is used to power the ducted furnaces, the water heater, and the liquid propane cooktop.

³ Removes liquid propane tank, furnace, and water heater. Option must be combined with 12-Volt Refrigerator. Includes Elwell Hydronic Heating System. All-electric coaches still require diesel for the engine and either shore power or a generator to operate air conditioning.

⁴ Only available with LP coach option.

⁵ Replaces ducted furnaces when all-electric coach option is selected. Elwell Timberline Hydronic Heating System provides both heated air and water.

PLUMBING

- Water Heater Bypass System
- Aqua View Showermiser™
- Water Filter
- Water Pump
- Low-point Water Drain Lines
- Black Holding Tank Flush System
- Gravity Water Fill
- Heated Water and Holding Tank Compartment
- Tank Level Monitor System
- Fresh Water Hookup for City Water and Tank Fill
- Centralized Exterior Sewer Bay with Gravity Black and Grey Evacuation Ports
- Exterior Rinse Hose with Shower Head
- Sewer Hose Storage

| ELECTRICAL OPTIONS | | 25 TW | 25 RW | 25 LW | 25 JW |
|--------------------|--|-------|-------|-------|-------|
| Water Heater | Truma AquaGo™ Comfort Plus Instant Water Heater ¹ | D | D | D | D |
| | Elwell Timberline Hydronic Heating System ² | D | D | D | D |

¹ Standard with LP coach option.

² Replaces Truma AquaGo™ Comfort Plus instant water heater when all-electric coach option is selected. Elwell Timberline hydronic heating system provides both heated air and water.

Specifications, Features, and Options (Cont'd)

KEY : S : Standard Feature | O : Optional Feature; Additional costs may apply | D : Dependent; Availability is dependent on selection of another option | — : Not Available

EXTERIOR

- Full-body Paint with (3) Layers of Clear Coat
- Seamless One-piece Gel-coat Fiberglass Molded Roof Cap
- One-piece Molded Gel-coat Fiberglass Front and Rear Caps
- High Performance Protective Film on Front Cap, Front Cab, and Other Select Areas
- (1) Girard® Side-mounted Powered Patio Awning with Integrated LED Lighting and Built-in Speakers
- Lockable Handles on Compartment Doors
- Motion-sensor Lights in Cargo Bay
- Flush-Style Tinted Windows with Tip-out Feature
- Exterior Patio Light
- Fog Lights
- Driver and Passenger Side Front Cap Exterior Entry Light **NEW**
- Heated, Electrically Adjustable Side-view Mirrors
- Entry Door Grab Handle
- Mud Flaps
- Limited Edition 50th Anniversary Decal **NEW**

| EXTERIOR OPTIONS | 25 TW | 25 RW | 25 LW | 25 JW |
|------------------|-------|-------|-------|-------|
| Exterior TV | O | O | O | O |

INTERIOR

- Solid Surface Galley Countertop
- Handcrafted Slide-out Fascia
- Soft Touch Vinyl Ceiling
- Accent Lighting in Lounge, Galley, and Bedroom
- LED Lighting
- Carbon Monoxide Detector
- LPG Leak Detector
- Smoke Detector
- Fire Extinguisher
- Solar and Privacy Shades
- Soft-closing Drawer Slides
- Powered Roof Vents
- Interior Grab Handle at Entry Door
- Stereo System with Separate Speaker Zones
- (2) Captain's Chair Lounge Cushions

| INTERIOR OPTIONS | | 25 TW | 25 RW | 25 LW | 25 JW |
|------------------------------------|--------------------------------|-------|-------|-------|-------|
| Treated Fabric Suites ¹ | Mink | O | O | O | O |
| | Champagne | O | O | O | O |
| Ultraleathers | Etna Linen ² | D | D | D | D |
| | Seaport Bamboo ³ | D | D | D | D |
| Cabinetry Stain | Sandstone ⁴ | O | O | O | O |
| | Shadow ⁴ NEW | O | O | O | O |
| Television | (1) Flat-panel Television | D | D | D | S |
| | (2) Flat-panel Televisions | D | D | D | — |
| Washer & Dryer | Prep for Washer and Dryer | — | — | — | S |
| | Combo Washer-Dryer | — | — | — | O |
| Central Vacuum System | | O | O | O | O |

¹ Sterling and Oasis are no longer be available.

² Only available with Champagne treated fabric suite option.

³ Only available with Mink treated fabric suite option.

⁴ Russett and Acier Gray/Chateau are no longer available.

DINETTE AND LIVING AREA

| | | 25 TW | 25 RW | 25 LW | 25 JW |
|--------------------------|---|-------|-------|-------|-------|
| Driver Side Dinette | Booth Dinette-Sleeper ¹ | — | S | — | — |
| Driver Side Furniture | Queen-sized Murphy Bed (60" x 74") with Sofa ¹ | — | S | — | S |
| | Leatherette Sofa with Trifold Hide-a-bed ¹ | S | O | S | — |
| | Theater Seating | O | O | O | — |
| Passenger Side Furniture | Mounted Flat-panel TV ² | S | O | S | — |
| | Workstation with Flip-up TV | — | — | — | S |

¹ Piece of furniture sleeps one comfortably.

² Not available when overhead entertainment system is optioned.

KITCHEN

- Stainless Steel Convection Microwave
- Stainless Steel Single Bowl Sink and Faucet with Built-in Sprayer
- Galley Overhead Cabinets
- Sliding Countertop Extension
- LED Countertop Lighting
- Solid Surface Galley Countertop

| KITCHEN OPTIONS | | 25 TW | 25 RW | 25 LW | 25 JW |
|-----------------------------------|---|-------|-------|-------|-------|
| Refrigerator | 12-Volt, 5-Cubic Foot Refrigerator ¹ | S | — | S | — |
| | Gas-Electric, 5-Cubic Foot Refrigerator ² | O | — | O | — |
| | 12-Volt, 6.5-Cubic Foot Refrigerator ¹ | — | S | — | S |
| | Gas-Electric, 6.5-Cubic Foot Refrigerator ² | — | O | — | O |
| Cooking Appliances UPDATED | Liquid Propane Cooktop with Built-in Cover ³ | D | D | D | D |
| | One-Burner Induction Cooktop ⁴ | D | D | D | D |

¹ Required with all-electric coach option.

² Not available with all-electric coach option.

³ Cooktop and sink have swapped places on galley for 2023. Only available with LP coach option. Not available with all-electric coach option.

⁴ Cooktop and sink have swapped places on galley for 2023. Replaces liquid propane cooktop when all-electric coach option is selected.

BEDROOM

- LED Reading Lights
- Overhead Cabinets
- Wardrobe

| BEDROOM FEATURES AND OPTIONS | | 25 TW | 25 RW | 25 LW | 25 JW |
|--|--|-------|-------|-------|-------|
| Mattress | (2) Twin Mattresses (32" x 76") with Capability to Convert into King Bed (86" x 76") | S | — | S | — |
| | Queen-sized Murphy Bed (60" x 74") with Sofa | — | S | — | S |
| Under Bed Storage | | S | — | S | — |
| Strategically Placed Privacy Curtain Mounted Flat-panel TV | | O | S | O | — |
| Bedroom Storage | Pop-up Closet Storage | — | — | S | — |
| | Closet Pull-out NEW | — | — | S | — |

BATHROOM

- Porcelain Vessel Sink with Chrome Faucet
- Handheld Shower Head
- Shower Skylight
- Towel and Toilet Paper Holders
- Roof Vent Fan
- LED Lighted Mirror
- Base Cabinet

| BATHROOM FEATURES AND OPTIONS | | 25 TW | 25 RW | 25 LW | 25 JW |
|-------------------------------|---|-------|-------|-------|-------|
| Shower | One-piece Fiberglass Shower (30" x 36") | S | — | S | — |
| | One-piece Fiberglass Shower (24" x 32") | — | S | — | S |

1

YEAR OR 12,000 MILES
LIMITED WARRANTY

3

YEARS PAINT
DELAMINATION
LIMITED WARRANTY

5

YEARS OR 100,000 MILES
CHASSIS POWERTRAIN
LIMITED WARRANTY

3

YEARS OR 36,000 MILES
MERCEDES-BENZ CHASSIS
LIMITED WARRANTY

1

YEAR COACH
ROADSIDE SERVICES



TIFFIN

MOTORHOMES

FOR PARTS & SERVICE CALL 256.356.0261 OR VISIT TIFFINMOTORHOMES.COM | 105 2ND ST NW RED BAY, AL 35582  

©2022 Tiffin Motorhomes, Inc. Allegro®, Allegro Breeze®, Allegro RED®, Phaeton®, Allegro Bus®, Zephyr®, Wayfarer®, Roughing It Smoothly®, Open Road®, PowerGlide®, and Cahaba® are registered trademarks of Tiffin Motorhomes, Inc. All rights reserved. For all information concerning the limited warranty provided by Tiffin, please refer to the full written limited warranty set forth on the Tiffin website or held by our authorized dealerships. Please note, some interior furnishings not included.