



## 2023 RETREAT | EXCEPTIONAL FEATURES

- RESIDENTIAL APPLIANCE PACKAGE
- 102" WIDE BODY CONSTRUCTION
- CENTRAL VACUUM
- SOLID SURFACE COUNTERTOPS
- LARGEST WINDOWS IN ITS CLASS
- TINTED SAFETY GLASS WINDOWS AND SLIDING DOORS
- 6'10" SLIDE ROOM HEIGHT FOR ADDED NATURAL LIGHT AND HEAD ROOM
- RESIDENTIAL WOOD BLINDS
- LAMINATION UPGRADE AVAILABLE
- PARK TRAILER ASSOCIATION APPROVED



391FLFT

# MY KEYSTONE

OWNER'S APP

THE ONLY APP YOU'LL NEED...

» MANUALS & QUICK START GUIDES

» HOW-TO VIDEOS



» FIRST-TIME CAMPER'S ADVICE

» ACCESS TO YOUR RV'S MOBILE APPS

Available for iOS  
and Android devices.

VISIT OUR WEBSITE FOR PHOTOS,  
360° TOURS, AND FULL PRODUCT DETAILS



**THIS ISN'T  
YOUR BEST LIFE.  
IT'S BETTER.**



Through product innovation, exceptional features, quality production, and support after the sale, Keystone makes tomorrow's dreams possible, today.



KEYSTONE  
RV COMPANY

CAMP BETTER

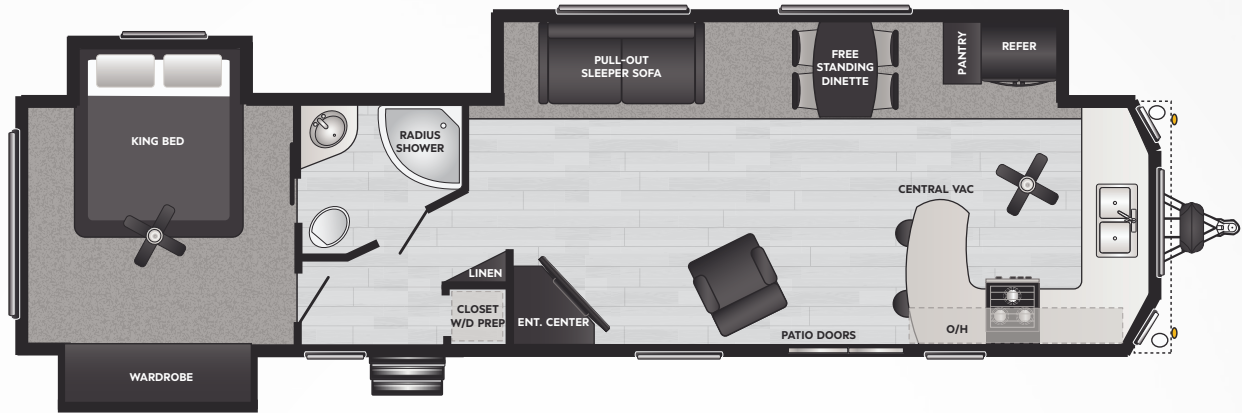
# RETREAT

DESTINATION TRAILERS



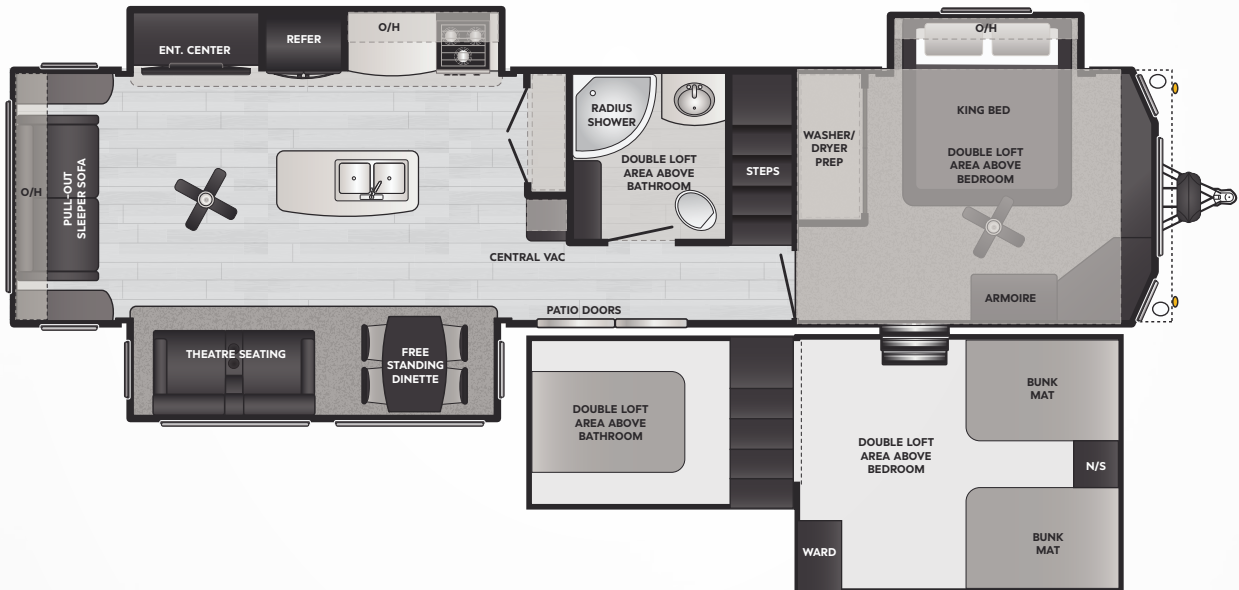
KEYSTONE  
RV COMPANY

CAMP BETTER



**39/391FKSS** | WEIGHT 10990 | LENGTH 40' 2"

▪ TWO SLIDES, KING BED SLIDE, W/D PREP



**39/391FLFT** | WEIGHT 12907 | LENGTH 40' 11"

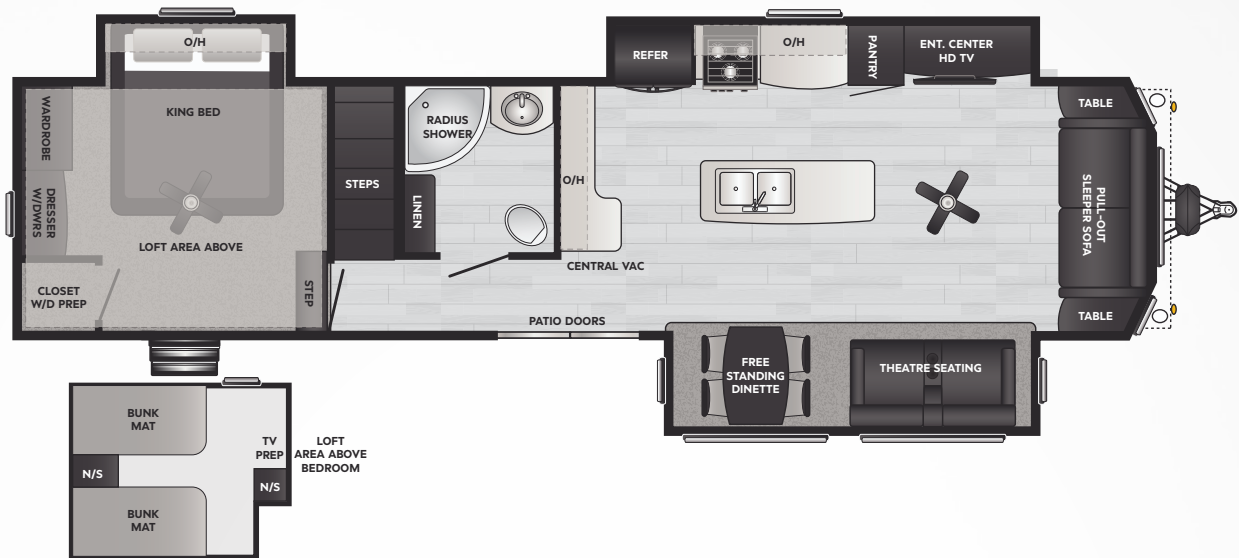
▪ THREE SLIDES, KING BED SLIDE, DOUBLE LOFT

NEW ARRIVAL



FOLLOW US FOR THE LATEST!

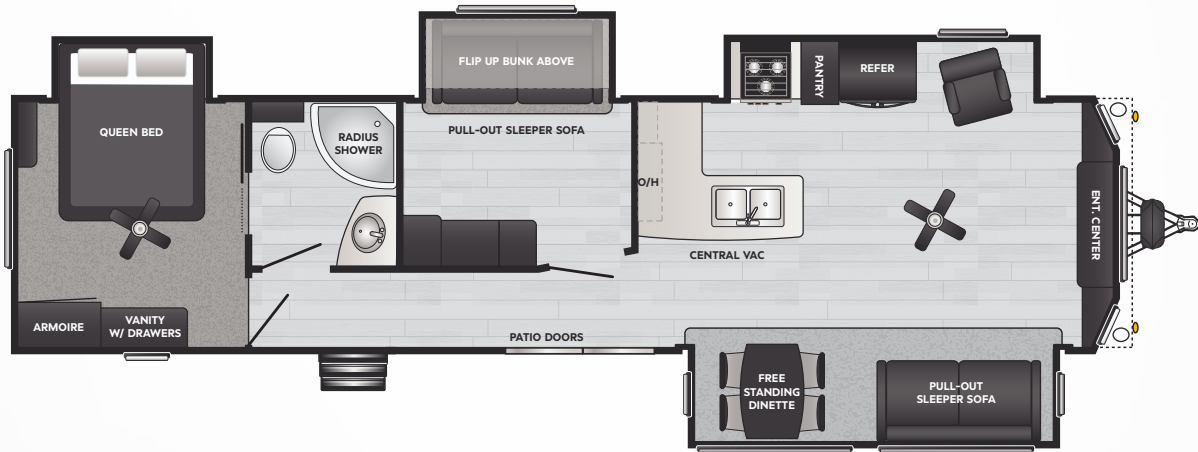




## 39/391LOFT

WEIGHT 12526 | LENGTH 40' 8"

▪ THREE SLIDES, KING BED SLIDE, LOFT

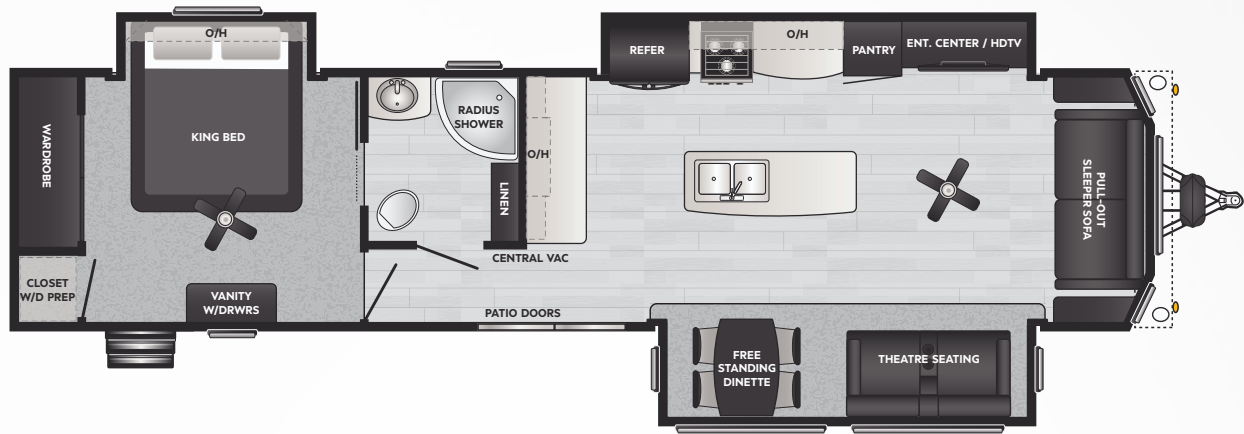


## 39/391MBNK

WEIGHT 12018 | LENGTH 39' 10"

▪ FOUR SLIDES, QUEEN BED SLIDE, MID-BUNKROOM W/ SLIDE

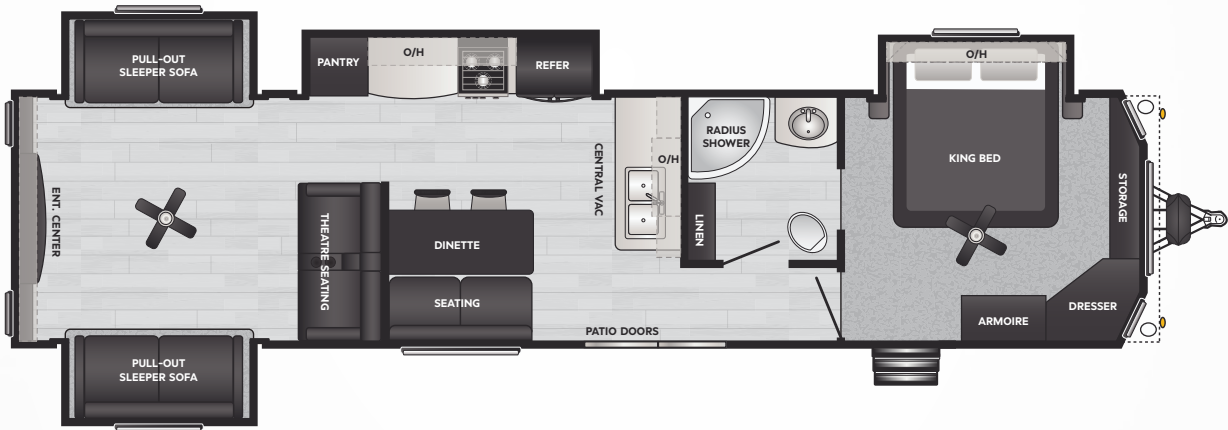
MODEL	WEIGHT	CARRYING CAPACITY	HITCH WEIGHT	FRESH WATER**	WASTE WATER	GRAY WATER	LPG	LENGTH*	WIDTH	HEIGHT	AWNING
39FKSS	10990	2360	1380	53	39	78	60	40' 2"	8' 6"	12' 7"	20'
39FLFT	12907	1093	1405	53	39	39	60	40' 11"	8' 6"	13' 5"	18'
39LOFT	12526	1474	1700	53	39	71	60	40' 8"	8' 6"	13' 5"	20'
39MBNK	12018	1382	1420	53	39	78	60	39' 10"	8' 6"	12' 7"	20'
39MKTS	11813	2102	1915	53	39	71	60	40' 8"	8' 6"	12' 7"	20'
39RDEN	11994	1446	1440	53	39	39	60	40' 11"	8' 6"	12' 7"	20'
391FKSS	10876	2474	1360	53	39	78	60	40' 2"	8' 6"	12' 7"	20'
391FLFT	12907	1093	1405	53	39	39	60	40' 11"	8' 6"	13' 5"	18'
391LOFT	12493	1507	1725	53	39	71	60	40' 8"	8' 6"	13' 5"	20'
391MBNK	12037	1263	1340	53	39	78	60	39' 10"	8' 6"	12' 7"	20'
391MKTS	11820	2105	1925	53	39	71	60	40' 8"	8' 6"	12' 7"	20'
391RDEN	11940	1530	1475	53	39	39	60	40' 11"	8' 6"	12' 7"	20'



## 39/391MKTS

WEIGHT 11813 | LENGTH 40' 8"

▪ THREE SLIDES, KING BED SLIDE, W/D PREP



## 39/391RDEN

WEIGHT 11994 | LENGTH 40' 11"

▪ FOUR SLIDES, KING BED SLIDE, REAR DEN

DISCLAIMER: Product information is as accurate as possible as of the date of publication of this brochure. All features, floor plans, and specifications in this brochure are subject to change without notice. Please also consult Keystone's web site at [www.keystonerv.com](http://www.keystonerv.com) for more current product information and specifications. Tow Vehicle Disclaimer. CAUTION: Owners of Keystone recreational vehicles are solely responsible for the selection and proper use of tow vehicles. All customers should consult with a motor vehicle manufacturer or their dealer concerning the purchase and use of suitable tow vehicles for Keystone products. Keystone disclaims any liability or damages suffered as a result of the selection, operation, use or misuse of a tow vehicle. KEYSTONE'S LIMITED WARRANTY DOES NOT COVER DAMAGE TO THE RECREATIONAL VEHICLE OR THE TOW VEHICLE AS A RESULT OF THE SELECTION, OPERATION, USE OR MISUSE OF THE TOW VEHICLE. \*Length is defined as the distance from the centerline of hitch pin/coupler to rear bumper of trailer. \*\* Fresh water capacity includes water heater. Please review owner's manual prior to purchase for more information on service warranties, extended use, towing and maintenance. Owner's manuals can be found at [keystonerv.com](http://keystonerv.com).