

1999  
MINNIE®





# 1999 MINNIE

This year's widebody Minnie proves you don't need a large amount of money to get a large amount of living space.

Contrary to its name, the 1999 Minnie has a surprising amount of interior space. And to put it to good use, the widebody Minnie floorplans are loaded up with a host of travel-friendly innovations. Once inside you'll notice an extra wide dinette, with elbow room for four (to say nothing of shoulder-to-shoulder seating). You'll also find a wide, deep shower and linen cabinet. And then there's the 31C model. It comes with an exclusive StoreMore™ Hydraulic Slideout System so you'll have plenty of room to stretch your legs in the dinette and lounge area. Yet even when extended, accessing storage is no problem. But perhaps the most enticing feature of this year's Minnie is that it offers all the warranty benefits found in our top-of-the-line models. All in all, the 1999 Minnie models offer plenty of unexpected amenities for a rather unexpected price.



**31C** Our unique StoreMore Hydraulic Slideout System widens the lounge/dining area giving you more space inside without sacrificing cabinet space or outside storage space. The couch is also larger this year so you'll have plenty of room to stretch out after a round of golf.



**22E** The dinette converts to a bed when you need extra sleeping space. The cabinet with a roll-up tambour door is standard and makes a perfect place to put an available 13" TV.



**31C** An oval sink, plenty of cabinets, and a skylight over the shower make the bath in the Minnie bright and inviting.





**24W** A front overhead bunk comes with privacy curtains and cabinet storage. An available 12V TV/VCR on a locking swivel and slideout shelf over the lounge chair makes viewing easy from the dinette or bunk area. A front entertainment center with unique slideout bed is also available on some models.



**31C** The bedroom contains a comfortable queen-size bed. Spacious cabinets above and storage under the bed offer seemingly endless space, while the wardrobe with mirror and drawers keep clothes neat.



**31C** This galley contains all the amenities you could hope for: a stainless steel double sink, three-burner range, abundant supply of cabinets, a flip-up counter top extension and a microwave. An available 19" TV and VCR complete the picture.



**31C** From lawn chairs to golf clubs, our StoreMore slideout storage compartments make loading and unloading a breeze. These compartments slide out with the room—a feature competitor's slideouts don't offer.



**22E** An available exterior wash station with pump switch and lockable door is a welcome feature at the beach or anywhere you need a quick cleanup.



# 1999 MINNIE SPECIFICATIONS

| 1999 MINNIE                        | 22E            | 22R            | 24W            | 27U                | 29N                | 31G                | 31C            |
|------------------------------------|----------------|----------------|----------------|--------------------|--------------------|--------------------|----------------|
| Length - Ford/Chev                 | 22'1"/22'6"    | 22'1"/22'6"    | 24'6"/24'11"   | 27'/27'5"          | 29'4"/NA           | 31'4"/NA           | 31'4"/NA       |
| Exterior Width <sup>Δ</sup>        | 8'3.9"         | 7'10.5"        | 7'10.5"        | 8'3.9"             | 8'3.9"             | 8'3.9"             | 8'3.9"         |
| Interior Height                    | 6'11"          | 6'11"          | 6'11"          | 6'7"               | 6'7"               | 6'7"               | 6'7"           |
| Interior Width                     | 8'             | 7'7"           | 7'7"           | 8'                 | 8'                 | 8'                 | 8'             |
| Fuel Cap. - Ford/Chev/Diesel       | 37/35/NA gal.  | 37/35/NA gal.  | 55/55/NA gal.  | 55/55/55 gal.      | 55/NA/55 gal.      | 55/NA/55 gal.      | 55 gal./NA/NA  |
| Fresh Water Capacity w/Heater      | 36 gal.        | 36 gal.        | 46 gal.        | 39 gal.            | 37 gal.            | 42 gal.            | 37 gal.        |
| Holding Tank Capacity - Black/Gray | 30/36 gal.     | 36/30 gal.     | 30/36 gal.     | 34/42 gal.         | 27/40 gal.         | 40/32 gal.         | 34/32 gal.     |
| LP Capacity <sup>◇</sup>           | 12 gal.        | 12 gal.        | 12 gal.        | 12 gal.            | 12 gal.            | 18 gal.            | 18 gal.        |
| Wheelbase - Ford/Chev              | 138"/139"      | 138"/139"      | 158"/159"      | 188"/189"          | 190"/NA            | 205"/NA            | 220"/NA        |
| Ext. Ht. w/AC - Ford†/Chev†        | 10'9"/11'0"    | 10'9"/11'      | 10'10"/11'     | 10'11"/11'         | 10'9"/NA           | 10'9"/NA           | 10'11"/NA      |
| Exterior Storage                   | 10.8 cu. ft.   | 12 cu. ft.     | 26.7 cu. ft.   | 43.6 cu. ft.       | 61.3 cu. ft.       | 52.9 cu. ft.       | 44.3 cu. ft.   |
| GVWR - Ford/Ford Diesel            | 10,700 lbs./NA | 10,700 lbs./NA | 11,500 lbs./NA | 14,050/14,050 lbs. | 14,050/14,050 lbs. | 14,050/14,050 lbs. | 14,050 lbs./NA |
| GVWR - Chev                        | 12,300 lbs.    | 12,300 lbs.    | 12,300 lbs.    | 12,300 lbs.        | NA                 | NA                 | NA             |

S Standard  
O Optional

|  | 22E | 22R | 24W | 27U | 29N | 31G | 31C |
|--|-----|-----|-----|-----|-----|-----|-----|
| <b>AUTOMOTIVE</b>  |     |     |     |     |     |     |     |
| Chassis - Chevrolet - 7.4L Vortec engine, 124-amp. alternator, anti-lock brake system  | O   | O   | O   | S   |     |     |     |
| Chassis - Ford - super-duty 6.8L V.10 Triton engine, 130-amp. alternator, dual air bags (second generation), anti-lock brake system (NA 29N, 31G, 31C)   | S   | S   | S   | O   | S   | S   | S   |
| Engine* - Navistar diesel, Ford  |     |     |     | O   | O   | O   |     |
| <b>DRIVER CONVENIENCES</b>   |     |     |     |     |     |     |     |
| Battery charge control - dual, automatic   | S   | S   | S   | S   | S   | S   | S   |
| Battery disconnect system  | S   | S   | S   | S   | S   | S   | S   |
| Beverage holder - chassis supplied   | S   | S   | S   | S   | S   | S   | S   |
| Cab seats w/3-point retracting seat belts - armrest, slide pedestal, recline   | S   | S   | S   | S   | S   | S   | S   |
| Cigarette lighter/12-V electrical supply   | S   | S   | S   | S   | S   | S   | S   |
| Cruise control   | S   | S   | S   | S   | S   | S   | S   |
| Divider curtain - cab  | S   | S   | S   | S   | S   | S   | S   |
| Dome light   | S   | S   | S   | S   | S   | S   | S   |
| Floor mats   | S   | S   | S   | S   | S   | S   | S   |
| Heating/air conditioning - auto. blend air   | S   | S   | S   | S   | S   | S   | S   |
| Hood release - interior  | S   | S   | S   | S   | S   | S   | S   |
| Power door locks & windows   | O   | O   | O   | O   | O   | O   | O   |
| Start circuit - auxiliary  | S   | S   | S   | S   | S   | S   | S   |
| Steering - power assisted w/tilt wheel   | S   | S   | S   | S   | S   | S   | S   |
| Sunvisors  | S   | S   | S   | S   | S   | S   | S   |
| Trim panels - driver & passenger doors (chassis supplied)  | S   | S   | S   | S   | S   | S   | S   |
| Windshield wipers (intermittent)   | S   | S   | S   | S   | S   | S   | S   |
| <b>ENTERTAINMENT</b>   |     |     |     |     |     |     |     |
| Entertainment center (patio) - DC receptacle, 110-V outlet, TV jack, radio antenna, AM/FM cassette radio, speakers (2), removable TV table, locking door | O   | O   | O   | O   | O   | O   | O   |
| Stereo (cab) - AM/FM/cassette deck, speakers (2)   | S   | S   | S   | S   | S   | S   | S   |

S Standard  
O Optional

|  | 22E | 22R | 24W | 27U | 29N | 31G | 31C |
|--|-----|-----|-----|-----|-----|-----|-----|
| <b>INTERIOR</b>  |     |     |     |     |     |     |     |
| TV enhancement package - antenna (amplified), 12-V interior jack(s), coax wiring, cable input, (27U, 29N, 31G, 31C include bedroom TV shelf or stand*) | S   | S   | S   | S   | S   | S   | S   |
| TV* front (19" color) & VCR w/remote - video selection system, w/slideout single bunk  |     |     | O   | O   | O   | O   |     |
| TV* (19" color) & VCR w/remote - video selection system  |     |     |     |     |     |     | O   |
| TV* front (19" color) w/remote - w/slideout single bunk, video selection system  |     |     | O   | O   | O   | O   |     |
| TV* (19" color) w/remote - video selection system  |     |     |     |     |     |     | O   |
| TV* front - side (13" color) & VCP - w/remote & locking slideout/swivel shelf  | O   | O   | O   | O   | O   | O   |     |
| <b>SLIDEOUT</b>  |     |     |     |     |     |     |     |
| Slideout room - (dining/lounge area) approximately 11'4" long w/20" extension, slideout cover  |     |     |     |     |     |     | S   |
| <b>INTERIOR</b>  |     |     |     |     |     |     |     |
| Bed (front overhead) - privacy curtain, storage cabinet(s)   | S   | S   | S   | S   | S   | S   | S   |
| Cabinet doors - wood stile and rail, raised panel on upper cabinet doors   | S   | S   | S   | S   | S   | S   | S   |
| Carpeting w/pad - stain resistant  | S   | S   | S   | S   | S   | S   | S   |
| Ceiling lights   | S   | S   | S   | S   | S   | S   | S   |
| Ceiling vent - bedroom   |     |     |     | S   | S   | S   | S   |
| Ceiling vent - powered, bathroom   | S   | S   | S   | S   | S   | S   | S   |
| Ceiling vents* - front bed & galley  | S   | S   | S   | S   | S   | S   | S   |
| Color themes (interior) - choice of Sandpiper (tan), Horizon (blue), Meadow Brook (green)  | S   | S   | S   | S   | S   | S   | S   |
| Courtesy light(s)  | S   | S   | S   | S   | S   | S   | S   |
| Fabric ceiling   | S   | S   | S   | S   | S   | S   | S   |
| Ladder (front overhead bunk)   |     |     |     |     |     |     | S   |
| Storage - below couch  | S   |     |     | S   | S   | S   | S   |
| Wardrobe - carpeted shelf, clothes rod, wood-frame mirrored door (drawers 27U)   | S   | S   | S   | S   |     |     |     |

NA Not Available

Winnebago Industries' continuing program of product improvement makes specifications, equipment, model availability and prices subject to change without notice. Comparisons to other motor homes are based on the most recent information available.



S Standard  
O Optional

|   | 22E | 22R | 24W | 27U | 29N | 31G | 31C |
|---|-----|-----|-----|-----|-----|-----|-----|
| Window day/night blinds - lounge & bedroom                    | O   | O   | O   | O   | O   | O   | O   |
| Window - front bunk, delete                                   | O   | O   | O   | O   | O   | O   | O   |
| Windows* - dual glazed, thermo-insulated, tinted              | O   | O   | O   | O   | O   | O   | O   |
| <b>GALLEY</b>   |     |     |     |     |     |     |     |
| Flooring (vinyl)  | S   | S   | S   | S   | S   | S   | S   |
| Hinged dinette seat back*                                     | S   | S   |     | S   | S   |     |     |
| Microwave Oven - touch control                                | S   | S   | S   | S   | S   | S   | S   |
| Pantry  | S   | S   |     |     |     |     |     |
| Range hood - ducted w/light & fan                             |     | S   | S   | S   | S   | S   | S   |
| Range hood - w/light & fan                                    | S   |     |     |     |     |     |     |
| Range w/oven - 3 burners                                      | S   | S   | S   | S   | S   | S   | S   |
| Refrigerator/freezer - double-door, flush mounted             | S   | S   | S   | S   | S   | S   | S   |
| Sink (double) - stainless steel, single control faucet, cover | S   | S   | S   | S   | S   | S   | S   |
| Spice rack  |     |     |     |     | S   |     |     |
| Storage* - below dinette seats                                | S   | S   | S   | S   | S   | S   |     |
| Storage cabinet   |     |     |     |     |     |     | S   |
| Wall border - decorative                                      |     |     |     |     |     |     | S   |
| <b>BEDROOM</b>  |     |     |     |     |     |     |     |
| Bedsprad(s), pillow shams, pillows, mattress(es)              |     |     | O   | S   | S   | S   | S   |
| Underbed storage - gas springs                                |     |     |     |     | S   | S   | S   |
| Vanity cabinet  |     |     |     |     | S   |     |     |
| <b>BATHROOM</b>   |     |     |     |     |     |     |     |
| Flooring (vinyl)  | S   | S   | S   | S   | S   | S   | S   |
| Lavatory cabinet  | S   | S   | S   | S   | S   | S   | S   |
| Medicine cabinet  | S   | S   | S   | S   | S   | S   | S   |
| Mirror - wall-mounted   | S   |     |     | S   | S   | S   | S   |
| Shower - flexible shower head                                 | S   | S   | S   |     | S   | S   | S   |
| Shower/tub - flexible shower head                             |     |     |     | S   |     |     |     |
| Shower door - pleated w/track                                 | S   | S   | S   | S   | S   | S   | S   |
| Shower light  |     |     |     | S   | S   | S   | S   |
| Shower surround   | O   |     | O   | O   | O   | O   | O   |
| Sink - oval   |     |     |     | S   |     |     | S   |
| Sink - rectangular, molded soap dishes                        | S   | S   | S   |     | S   | S   |     |
| Skylight  |     |     |     | S   | S   | S   | S   |
| Tissue holder   | S   | S   | S   | S   | S   | S   | S   |
| Toilet - w/hand lever   | S   | S   | S   | S   | S   | S   | S   |
| Towel bar   | S   | S   | S   | S   | S   | S   | S   |
| Towel rack - 3 rods, built into bath door                     | S   | S   | S   | S   | S   | S   | S   |
| Towel ring  | S   | S   | S   | S   | S   | S   | S   |
| <b>EXTERIOR</b>   |     |     |     |     |     |     |     |
| Assist handle*  | S   | S   | S   | S   | S   | S   | S   |
| Awning*   | O   | O   | O   | O   | O   | O   | O   |
| Awning rail   | S   | S   | S   | S   | S   | S   | S   |
| Bumper - front: steel, chrome plated                          | S   | S   | S   | S   | S   | S   | S   |
| Entrance door step  | S   | S   | S   | S   | S   | S   | S   |
| Entrance door step - electric                                 | O   | O   | O   | O   | O   | O   | O   |
| Entrance door w/screen door - deadbolt lock                   | S   | S   | S   | S   | S   | S   | S   |
| Ladder  | S   | S   | S   | S   | S   | S   | S   |
| Mirrors (rear view) - w/convex on both sides                  | S   | S   | S   | S   | S   | S   | S   |
| Mud flaps - rear  | S   | S   | S   | S   | S   | S   | S   |
| Outlet - 110-V, curbside                                      | S   | S   | S   | S   | S   | S   | S   |
| Porch light - interior switch                                 | S   | S   | S   | S   | S   | S   | S   |

S Standard  
O Optional

|  | 22E | 22R | 24W | 27U | 29N | 31G | 31C |
|--|-----|-----|-----|-----|-----|-----|-----|
| Running boards (aluminum)  | S   | S   | S   | S   | S   | S   | S   |
| Sewer hose - w/storage   | S   | S   | S   | S   | S   | S   | S   |
| Storage compartments - locking doors, floor liner  | S   | S   | S   | S   | S   | S   | S   |
| Tire (spare)   | O   | O   | O   | O   | O   | O   | O   |
| Tire tool - lug wrench   | S   | S   | S   | S   | S   | S   | S   |
| Tires (radial)   | S   | S   | S   | S   | S   | S   | S   |
| Trailer towing package - w/hitch   | O   | O   | O   | O   | O   | O   | O   |
| Trailer wiring extension   | S   | S   | S   | S   | S   | S   | S   |
| Wash station   | O   | O   | O   | O   | O   | O   | O   |
| Water fill door - lockable   | S   | S   | S   | S   | S   | S   | S   |
| Wheel covers - stainless steel   | S   | S   | S   | S   | S   | S   | S   |
| Wheel liners* - stainless steel  | O   | O   | O   | O   | O   | O   | O   |
| <b>SYSTEMS</b>   |     |     |     |     |     |     |     |
| 2 batteries* - deep cycle (maintenance free)   | O   | O   | O   | O   | O   | O   | O   |
| Air conditioning pre-wiring - roof   | S   | S   | S   | S   | S   | S   | S   |
| Air conditioner* (Coleman) - roof, 13,500-BTU  | O   | O   | O   | O   | O   |     |     |
| Air conditioner* (Coleman) - roof, 14,800-BTU  |     |     |     |     |     | O   | O   |
| Battery - deep cycle   | S   | S   | S   | S   | S   | S   | S   |
| City water hook-up   | S   | S   | S   | S   | S   | S   | S   |
| Electrical control center - automotive DC fuses, AC breakers, 9-amp. battery charger/32-amp. converter, (45-amp. converter 31G & 31C)                            | S   | S   | S   | S   | S   | S   | S   |
| Furnace - ducted, low profile, 25,000-BTU  | S   | S   | S   |     |     |     |     |
| Furnace - ducted, low profile, 30,000-BTU  |     |     |     | S   | S   | S   | S   |
| Generator* (Onan) - 3,600-watt, 110-V wiring, switches, hourmeter, LP, requires diesel engine option   |     |     |     | O   | O   | O   |     |
| Generator* (Onan) - 4,000-watt, 110-V wiring, switches, hourmeter, gas   | O   | O   | O   | O   | O   | O   | O   |
| Generator prep kit* - gas line, 12-V wiring (gas line NA w/diesel engine)  | S   | S   | S   | S   | S   | S   | S   |
| Inverter* - 130-watt for TV/VCR  |     |     | O   | O   | O   | O   | O   |
| LP tank - permanent mount w/gauge  | S   | S   | S   | S   | S   | S   | S   |
| Monitor panel - water, holding & LP tank levels, battery condition gauge, water pump switch, water heater switch w/pilot indicator light, located on galley wall | S   | S   | S   | S   | S   | S   | S   |
| Power cord - 30-amp., 25 feet long   | S   | S   | S   | S   | S   | S   | S   |
| Water drain system - through floor   | S   | S   | S   | S   | S   | S   | S   |
| Water heater - 6-gal., electronic ignition   | S   | S   | S   | S   | S   | S   | S   |
| Water heater winterization by-pass valve   | S   | S   | S   | S   | S   | S   | S   |
| Water line winterization valve   | S   | S   | S   | S   | S   | S   | S   |
| Water pump (demand)  | S   | S   | S   | S   | S   | S   | S   |
| <b>SAFETY</b>  |     |     |     |     |     |     |     |
| 3-point cab seat belts   | S   | S   | S   | S   | S   | S   | S   |
| Air bags - (driver & passenger) Ford   | S   | S   | S   | S   | S   | S   | S   |
| Assist strap - interior  | S   | S   | S   | S   | S   | S   | S   |
| Carbon monoxide detector/alarm   | S   | S   | S   | S   | S   | S   | S   |
| Escape window  |     |     | S   | S   | S   | S   | S   |
| Fire extinguisher (10-B.C.)  | S   | S   | S   | S   | S   | S   | S   |
| Ground fault interrupter   | S   | S   | S   | S   | S   | S   | S   |
| High-mount brake light   | S   | S   | S   | S   | S   | S   | S   |
| Lap belts - in selected areas  | S   | S   | S   | S   | S   | S   | S   |
| LPG leak detector/alarm  | S   | S   | S   | S   | S   | S   | S   |
| Smoke detector/alarm   | S   | S   | S   | S   | S   | S   | S   |
| <b>WARRANTY</b>  |     |     |     |     |     |     |     |
| 12 month/15,000 mile basic warranty, 36 month/36,000 mile warranty on structure.** 10 year limited parts & labor warranty on roof                                | S   | S   | S   | S   | S   | S   | S   |

∠ Capacities shown are tank manufacturer's listed water capacity (W.C.). Actual filled LP capacity is 80% of listing due to safety shut-off required on tank.

† The height of each model is based on the curb weight of a typically equipped unit on the standard chassis. The actual height of your vehicle may vary by as much as 2" depending on chassis or equipment variations.

△ Most Minnie floorplans feature a widebody design—over 96". In making your purchase decision, you should be aware that some states restrict access on some or all state roads to 96" in body width. Before making your purchase decision, you should confirm the road usage laws in the states of interest to you.

\*Not all options available in combination. See your dealer for details.

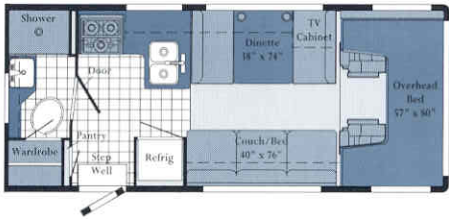
\*\*See your dealer for complete warranty documentation information.

# THIS YEAR'S FLOORPLAN SELECTION COULDN'T GET MUCH WIDER.



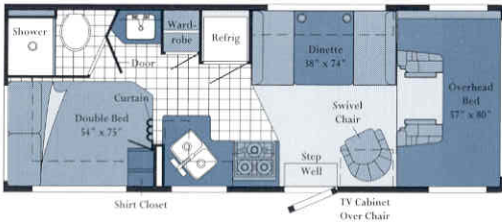
## 22E

- Widebody design.
- Convenient rear galley.
- Rear bath.
- Generous sleeping space.



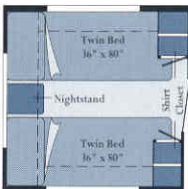
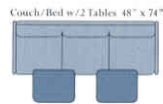
## 22R

- Traditional width design.
- Convenient L-shaped galley.
- Rear bath.
- Generous sleeping space.



## 24W

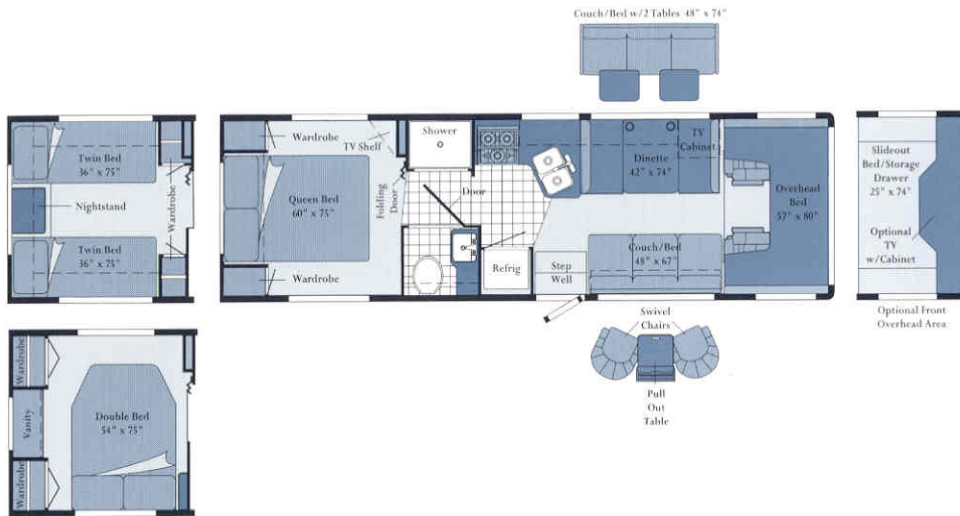
- Traditional width design.
- Private rear bedroom and bath.
- Overhead bunk or available overhead entertainment center.
- Convertible dinette up front for more sleeping space.



## 27U

- Widebody design.
- In-line galley.
- Private bath with shower/tub.
- Choose from queen or twin bed option.





### 29N

- Widebody design.
- Wide range of floorplan options.
- Choose from double, queen or twin beds.
- Overhead bunk or available overhead entertainment center.



### 31G

- Widebody design.
- Separate lounge and dinette areas for a Class A feel.
- Choose from queen or twin bed option.



### 31C

- Widebody design.
- Queen or twin bed option in the rear.
- Abundant galley storage.
- Separate microwave cabinet at countertop height.



Our high standards made us one of the first motor home manufacturers to earn the title "Qualified Vehicle Modifier," identifying us as a leader among companies who build on Ford chassis.

Note: Dimensions shown are for sleeping space only and dashed lines denote overhead storage areas.



## INTERIORS

Meadowbrook  
with Waterford Oak



Sandpiper  
with Waterford Oak



Horizon  
with Waterford Oak



*Every motor home interior is stitched, constructed, sanded and stained with care in our factory by our own employees. We even perform extensive wear tests to ensure long-lasting durability. This concept is called Home Comfort Design, and it gives us complete control over the fit and finish of the final product. We take great pride in offering you high-quality, handcrafted living spaces to match your lifestyle.*

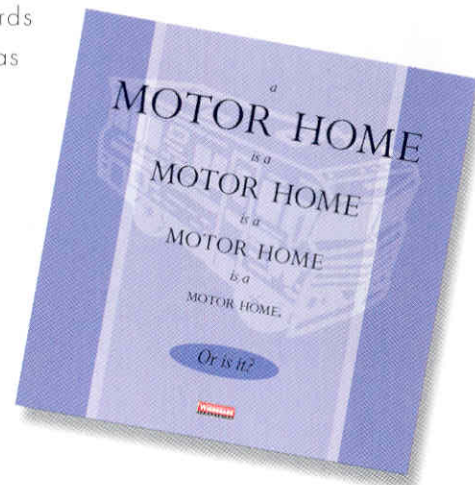


22R

*Available in lengths ranging from 22 to 31 feet, the Winnebago Minnie offers exceptional flexibility at an exceptional price.*

Ask for the Winnebago Industries buyer's guide and discover why all motor homes are not created equal.

The process of buying a motor home can be intimidating, even if you're a veteran. And in a market saturated with flashy first impressions, the true signs of quality are often hard to spot. So we've put together a user-friendly guide to help you make some educated observations as you compare Winnebago Industries motor homes to the competition. It explains our uniquely superior on-site manufacturing processes, highlights the importance of meeting (and exceeding) industry standards and, best of all, it's free. Use it as a reference tool when shopping around, or familiarize yourself with some key safety and quality considerations. Ask for the guide next time you visit your Winnebago Industries dealer, and upgrade your motor home buying savvy.



Visit us at [www.winnebagoind.com](http://www.winnebagoind.com)

**WINNEBAGO** Built proudly by  
**WINNEBAGO**  
© 1998 Winnebago Industries, Inc. Forest City, IA 50436. Printed in USA.

Seat belts are your most important hookup. Always buckle up.