



TRAVATO

WINNEBAGO



On the Cover: Bright Silver Deluxe Full-Body Paint
Interior: Bleu with Nocé Cabinetry



All the comforts of home in a compact, efficient package

Based on the powerful, fuel-efficient Ram ProMaster® chassis, the Travato® has been at the forefront of the Camper Van revolution since its introduction. Elevating the Travato to another level is the addition of the Pure³ Advanced Energy System in the 59GL and 59KL floorplans. This advanced lithium technology outperforms the competition and offers an impressive 48-volt system that delivers seamless operation, power, reliability, and

sustainability. Enhanced with premium features such as Corian® countertops, dual-pane acrylic windows, and the energy-saving Truma Combi™ Eco Plus Heating System, the Travato is better than ever. Thanks to significantly upgraded standard features like an expandable solar system and new interior décor colorways, you can tailor the Travato to suit your needs.

This brochure features the
Travato 59G floorplan



The Travato lounge provides an efficient, comfortable living space while you're in camp. The 59G/GL features two bench seats with a pivoting table, while the 59K/KL features a center table and bench seating for up to six. Comfortable cab seats (available in leather) swivel to provide front-row seating for the 24" HDTV. Let the breeze in with the standard side screen door, or deploy the European blind system to enhance your privacy with full light blocking and enhanced thermal insulation. Available dual-pane acrylic windows enhance all-season comfort and can be left open in a light rain to allow ventilation.

The heart of the Travato's galley is the large compressor-driven (no propane) refrigerator with a separate freezer. Cooking chores are handled by the two-burner range top with glass cover and microwave (microwave/convection oven in the 59K/KL). Corian countertops and a flip-up extension (59G/GL) provide prep space, while the stainless steel sink with glass cover makes cleanup a breeze at meal's end. A standard cold water filtration system provides clean water for cooking and drinking.



Galley



Counter Extension



Sink



Range



At day's end, flip down the large corner bed on the 59G/GL, or convert the bench seating on the 59K/KL to your choice of twin beds or a large queen bed thanks to our Flex Bed System. You'll sleep soundly thanks to the extra cushioning and improved air flow of the Deluxe FROLI sleep system.





Each floorplan includes a fully equipped bathroom with new bamboo shower platform. The 59G/GL bath features a stainless steel sink while the 59K/KL boasts a uniquely spacious rear bath/shower area.



Dash

The Travato cab is command central for its 280-hp V-6 Ram ProMaster chassis. Ergonomic seats (with available leather) include armrests, adjustable lumbar support, adjustable headrest, and slide/swivel/recline functions. The 5" LCD color touch screen provides radio, GPS, and rearview monitor capabilities. A full complement of conveniences – including cruise control, power steering, power mirrors with defrost and turn signals, power windows and locks, 12-volt powerpoints – add to the Travato's car-like driving experience.



Swivel Cab Seats

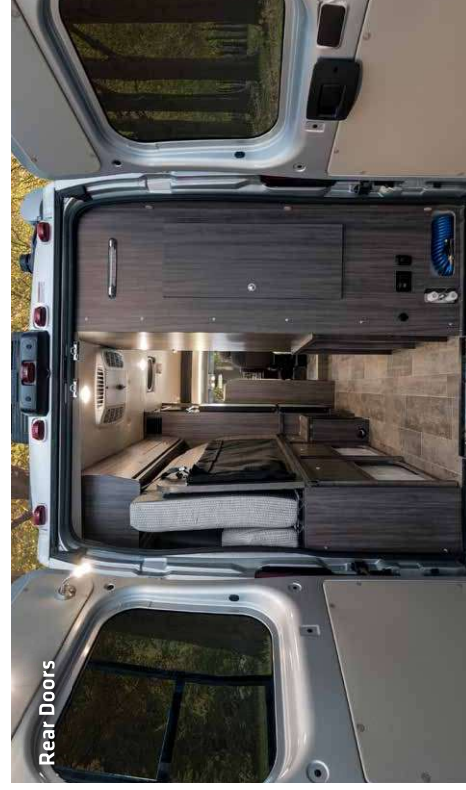


Powered Mirror



Powered Patio Awning

Make yourself at home in camp by deploying the Travato's powered patio awning. The powered entrance step and porch light make entry and exit easy, and the exterior speaker system lets you bring your music outside. The standard side screen door and available rear screen door enhance airflow while keeping bugs at bay. The optional bike rack and roof rack with ladder make it easy to bring your favorite toys along. And the new hot/cold exterior shower makes it easy to rinse the day's dust and dirt away.



Rear Doors



Wash Station

The Travato is also available with the Pure³ Advanced Energy System, the most powerful, durable, and easy-to-use lithium energy system in the industry. Standard on the Travato 59GL and 59KL, the Pure³ Advanced Energy System is U.S.-built in partnership with Volta Power Systems. This lithium energy system meets all of your power needs without requiring shorepower hookups or the use of a generator. The Pure³ system operates with the push of a button, and a simple analog gauge tells you how much energy remains.

The Pure³ system is replenished quickly and easily via an auxiliary alternator, idling the vehicle, or a shorepower hookup.



Three-module automotive-grade energy pack provides 8,700 usable watt-hrs. Its durable, water-resistant, temperature-controlled steel housing is the safest on the market.



Dedicated 58V alternator is nearly twice as powerful as competitors. Its compact design provides better ground clearance and keeps it out of the way of curbs and road debris.



MPPT solar controller and an expandable solar system provide best-in-class solar absorption, up to 30% better than competitors, giving you more off-grid performance.



Automotive-grade electrical connectors and wiring harness ensure trouble-free operations.



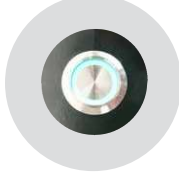
Powerful 3600W pure sine inverter provides 30 amps of power wherever you go.



Simple analog gauge changes color to let you know how much energy is remaining with just a glance.



Auto-Start and high-idle control significantly extends air-conditioner run time.



One button activates the Pure³ Advanced Energy System.



POWERFUL

- 30 amps of 110V A/C – all the time, anywhere
- Operate A/C from stored energy
- Run ALL your appliances while driving
- Amazingly fast charging
- Used in combination with Truma Combi Eco Plus, the Pure³ system can electrically heat the coach and water, reducing the use of LP
- Most efficient solar controller in its class



RELIABLE

- Designed for longevity and safe operation
- Virtually maintenance-free
- Temperature-controlled battery compartment
- Contains the same technology used in electric vehicles
- Automatic engine start when battery is low
- Safely leave your pets inside



SIMPLE

- Simple, seamless operation
- Recharge the battery by driving, idling, or plugged in
- Eliminate the generator – allowing you to reduce noise and sleep peacefully
- Compact and lightweight system with a seamless switchover from shore power
- Recyclable batteries

Solar

Equipped with 200W standard solar power and an MPPT charge controller, this expandable system serves as an added source of energy to the storage pack.



Pure³ On/Off Button

One push of the button is all it takes to activate the Pure³ Advanced Energy System and operate all coach appliances.



Converter

Our continuous output 12V DC converter makes it easy to support the vehicle's 12V lighting and appliances.



Auto Start Module

Users can safely run the vehicle in high-idle to recharge the energy storage pack or set the chassis to start and run automatically when the storage pack is low.



Energy Storage Pack

Boasting the highest energy density in the industry, the 48V Volta energy storage pack has more than twice the effective storage as its closest lithium ion competitors. Built with the same lithium ion technology used in the auto industry (Tesla[™], Chevrolet[®] Volt, etc.), this pack is safe, lightweight, and reliable.



Inverter/Charger

This high-efficiency 3.6 kW inverter produces a pure sine, low frequency 120V AC output equivalent to a 30-amp. shore power connection, enough to power all your appliances and your air conditioner simultaneously.



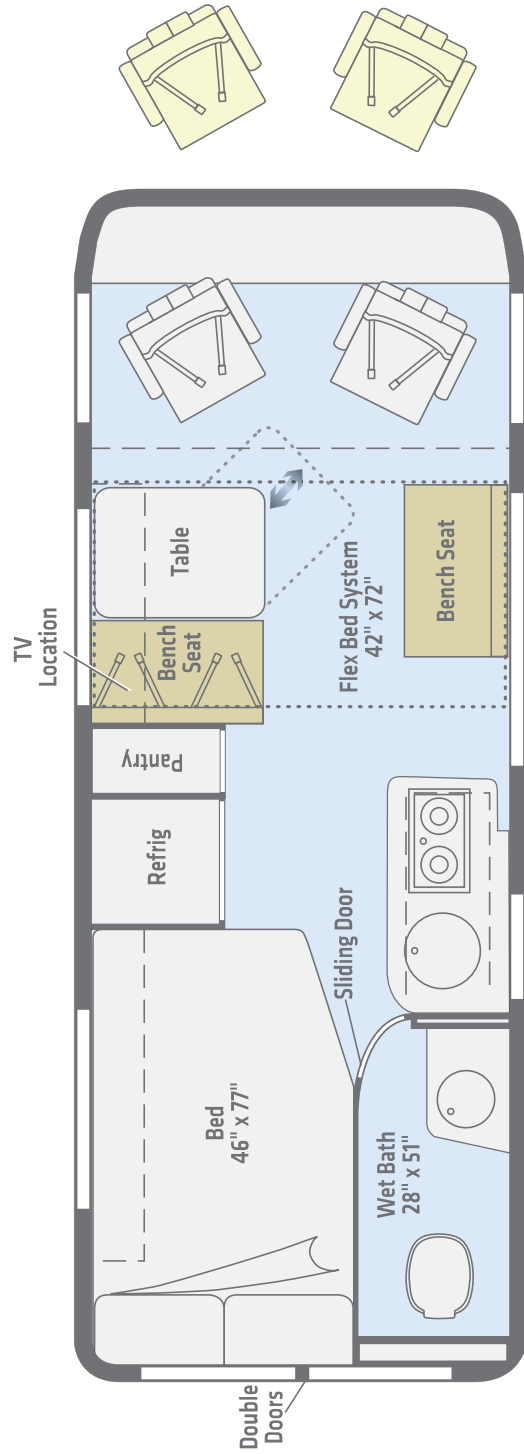
High-Output Auxiliary Alternator

Winnebago installs a second lightweight, high-output alternator that is solely dedicated to the Pure³ Advanced Energy System and is 4x times more powerful than traditional 12V solutions in the same size. Installed in combination with our fast-charge storage pack, it can charge the system with less than a couple hours of driving.



59G/GL

A large corner bed that flips up to make room for bikes or other large items, and the Flex Bed System up front make the 59G/GL exceptionally versatile. New standard features include the galley window, a pair of new storage compartments (one lockable), and a hot/cold exterior shower. The 59GL features the Pure³ Advanced Energy System.



- Premium Ultraleather
- Standard Ultraleather
- Vinyl

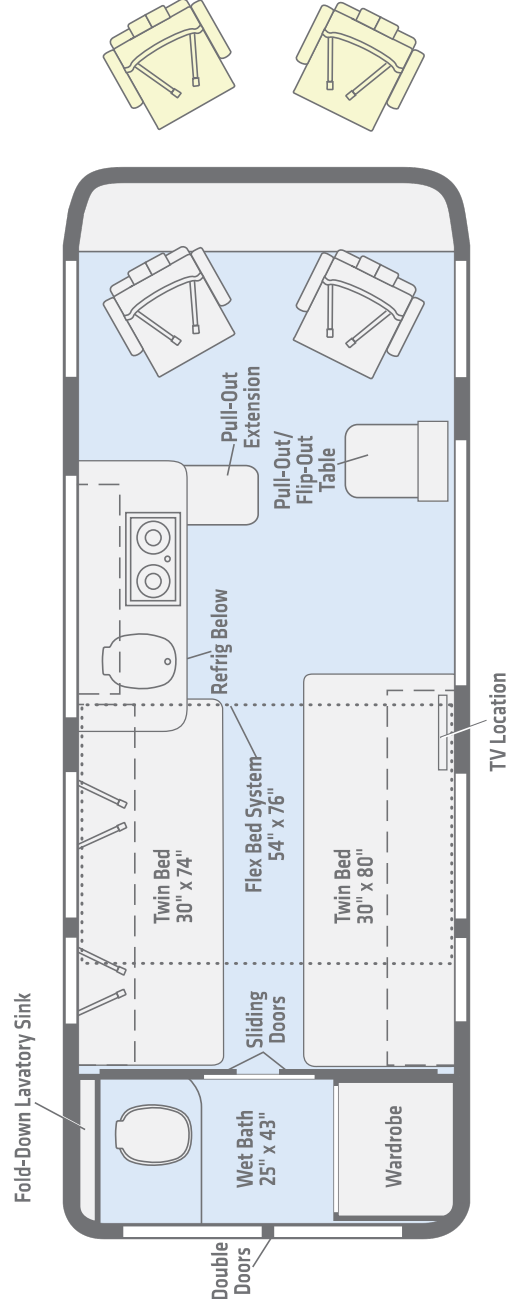
Length 21'
Seating 4

Dimensions shown are for sleeping and shower space only and may vary due to styling differences. Dashed lines denote overhead storage areas. Floorplans and specifications are also available online at WinnebagoInd.com.

Travato | Floorplans

59K/KL

This open floorplan boasts a twin bed configuration with a spacious rear bath/shower area and swivel cab seats that expand your living space. The driver's side bed now includes two belted seating positions. The 59KL features the Pure³ Advanced Energy System.



**Premium
Ultra-leather**

Vinyl

**Length 21'
Seating 4**

Dimensions shown are for sleeping and shower space only and may vary due to styling differences. Dashed lines denote overhead storage areas. Floorplans and specifications are also available online at WinnebagoInd.com.

Travato | Paint

Choose from four stylish full-body paint options.



Bright Silver
FULL-BODY PAINT



Bright Silver Deluxe
FULL-BODY PAINT



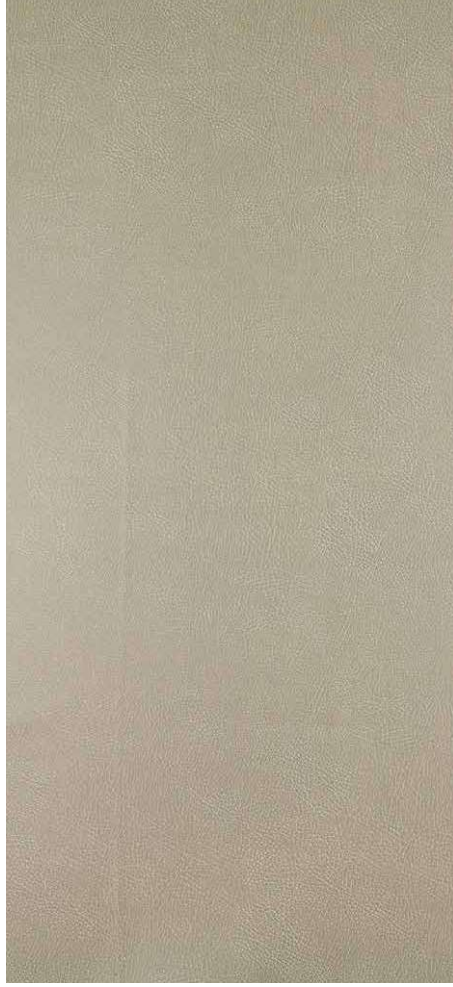
Granite
FULL-BODY PAINT



Granite Deluxe
FULL-BODY PAINT

Choose between two collections and two wood options.

Mecca



Ultraleather



Ultraleather Accent



Bed Cover



Corian Countertop
(Galley)



Wall Board



Vinyl Flooring

Woods



Macchiato

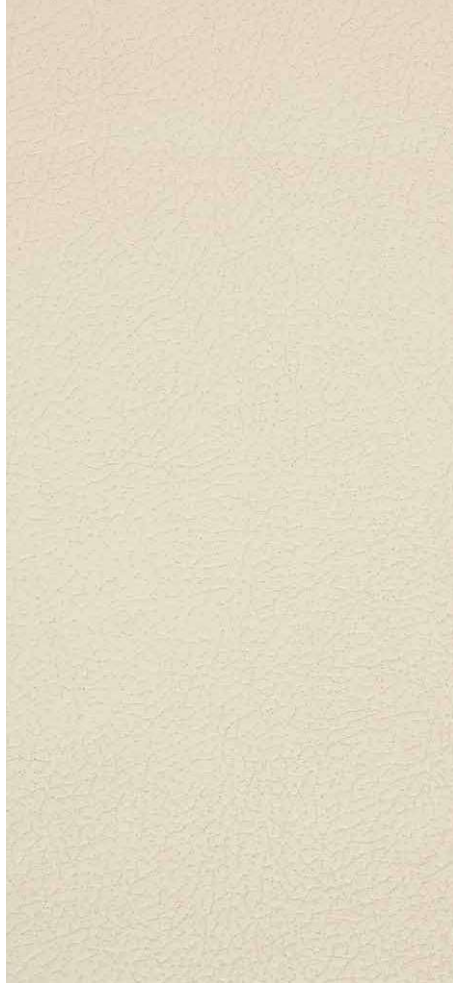


Nocé

Winnebago® reserves the right to change décor materials and specifications without notice or obligation.

Choose between two collections and two wood options.

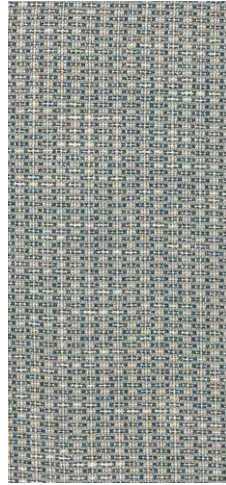
Bleu



Ultraleather



Ultraleather Accent



Bed Cover



Corian Countertop (Galley)



Wall Board



Vinyl Flooring

Woods



Macchiato



Nocé

Winnebago® reserves the right to change décor materials and specifications without notice or obligation.

The Holcombes

Peter, Kathy, and Abby have been full-time RVing since 2014. Using photos and videos shot by Peter, a professional photographer, the family has documented their many adventures around the continent including hiking, paddling, climbing, canyoneering, fishing, and more. All from the comfort of their Winnebago.

You can follow their journey at WinnebagoLife.com. You'll also find hundreds of other great stories from GoLife's outstanding contributors, along with how-to articles, gear reviews, RVing tips, and much more.

To learn more about the Holcombes' adventures, visit:

GoLife

WinnebagoLife.com/about



Weights & Measures

	59G	59GL	59K	59KL
Length	21'	21'	21'	21'
Exterior Height¹	9'4"	9'4"	9'4"	9'4"
Exterior Width	6'9"	6'9"	6'9"	6'9"
Awning Length	13'	13'	13'	13'
Interior Height	6'3"	6'3"	6'3"	6'3"
Interior Width	6'2"	6'2"	6'2"	6'2"
Freshwater Tank Capacity² (gal.)	21	18	23	18
Water Heater Capacity (gal.)	2.6*	2.6*	2.6*	2.6*
Holding Tank Capacity - Black/Gray² (gal.)	11/15	11/15	13/13	12/13
LP Capacity³ (gal.)	6	6	6	6
Fuel Capacity (gal.)	24	24	24	24
GCWR⁴ (lbs.)	11,500	11,500	11,500	11,500
GVWR (lbs.)	9,350	9,350	9,350	9,350
GAWR - Front (lbs.)	4,630	4,630	4,630	4,630
GAWR - Rear (lbs.)	5,291	5,291	5,291	5,291
Wheelbase	159"	159"	159"	159"
Seating Capacity	4	4	4	4

* Quick Recovery Truma Comb[™] water/coach heater system runs on LP and/or 110-volt electric (includes 2,950-watt heating elements)

Automatic 62TE transmission, 180-amp. alternator

4-wheel ABS brakes

Stylized aluminum wheels

Trailer Hitch⁴ 3,500-lb. drawbar/350-lb. maximum vertical tongue weight

4-pin wiring connector

Cab Conveniences

Radio/GPS Navigation/Rearview Monitor

System 5" LCD color touch screen, steering wheel controls, color rear camera, SiriusXM[®] (one-year complimentary subscription included), Bluetooth[®], USB ports

Cab seats armrests, adjustable lumbar support, adjustable headrest, and slide/swivel/recline

Airbags driver and passenger front, side curtain, side seat bolster

Cruise control

3-point seat belts

Power steering w/telescoping wheel

Power mirrors w/defrost and turn signal

Power door locks w/remote

Power windows

12-volt powerpoints

Sunvisors

Front and cab window privacy panels

Carpet floor mat

Applicqué package

OPTIONAL EQUIPMENT

Cab seats w/leather

Interior

24" HDTV and Coach stereo system w/AM/FM radio, Bluetooth, CD/DVD player, remote

Amplified Jack[®] digital TV antenna

Flexbed (59G, 59GL)

LED ceiling lights

Blackout cassette shades

Soft vinyl ceiling

Tinted coach windows

Powered ventilator fan (galley)

Powered roof vent (bath)

Systems monitor panel

Gear net (59G, 59GL)

Table w/leaf (59G, 59GL)

Below floor storage

OPTIONAL EQUIPMENT

Deluxe powered ventilator fan w/rain cover, electric lift, remote w/LCD screen, thermostat operation w/intake, and exhaust airflow (galley)

Dual-pane acrylic windows w/screen and blackout cassette shades

Galley

Corian[®] countertop

Flip-up countertop extension (59G, 59GL)

Microwave oven w/touch controls (59G, 59GL)

Microwave/convection oven w/touch controls (59K, 59KL)

2-burner range top w/glass cover and heat shield

Single door compressor-driven refrigerator/freezer 12-volt (59K, 59KL)

Two-door compressor-driven refrigerator/freezer 12-volt (59G, 59GL)

Stainless steel sink w/glass cover (The 59K/59KL also includes dishpan, cutting board, drain pan, and silverware rack)

Cold water filtration system (galley)

Cabinets and overhead storage

Pull-out countertop extension (59K, 59KL)

Bath

Flexible showerhead

Medicine cabinet

Mirror

Fold-down sink (59K, 59KL)

Toilet w/foot pedal and sprayer

Shower curtain

Shower package w/showerpan

Shower w/wall surround (59G, 59GL)

Stainless steel round sink (59G, 59GL)

Tissue holder

Towel bar (59K, 59KL)

Sliding tambour bath door

Lavatory cabinet (59G/59GL)

Bedroom

Double bed w/access to storage below and mattress cover (59G, 59GL)

Twin beds w/storage below passenger side (59K, 59KL)

Flexbed kit (59K, 59KL)

Deluxe FROLI[®] Sleep System

Exterior

Powered entrance step

Powered patio awning w/LED lighting

Porch light w/interior switch

Driver's side service light

Exterior speaker system

Stainless steel valance panel trim

Side screen door

OPTIONAL EQUIPMENT

Aluminum cab steps

Rear screen door

Bike rack

Movable ladder

Luggage rack

Lighted running board

Heating & Cooling System

13,500 BTU high-efficiency roof air conditioner
 Truma Combi™ Eco Plus Heating System w/
 two 850-watt heating elements

Electrical System

Pure³ Advanced Energy System (59GL, 59KL)
 Lithium-ion battery and inverter, includes a
 second under-hood alternator powered by the
 chassis engine

AC/DC load center, 45-amp. converter/charger

Auxiliary start circuit

2 deep-cycle Group 31 batteries (AGM
 maintenance-free) (59G, 59K)

Coach battery disconnect system

Automatic dual-battery charge control

30-amp. power cord

Exterior TV jack

Exterior AC/DC receptacle

2,800-watt Cummins® Onan® gas generator
 (59G, 59K)

Energy Management System

200-watt solar panels solar charge controller
 w/junction box and plugs for additional solar
 panels

1,000-watt AC/DC inverter (59G, 59K)

Plumbing System

LPG accessory connection (patio area)

Pressurized city water hookup

Exterior wash station w/pump switch (hot and
 cold water on select models)

10' sewer hose

Winterization Package water heater bypass
 valve and siphon tube

On-demand water pump

Permanent-mount LP tank w/gauge

Macerator pump (59G, 59GL gray tank only)

Holding tank flushing system

OPTIONAL EQUIPMENT

Heated drainage system

Safety

Child seat anchor (forward facing dinette) (59G,
 59GL)

LP, smoke, and carbon monoxide detectors

10 BC fire extinguisher

Ground fault interrupter

Fog lamps

Warranty⁵

12-month/15,000-mile basic warranty⁶

FOOTNOTES

1. The height of each model is measured to the top of the tallest standard feature and is based on the curb weight of a typically equipped unit. The actual height of your vehicle may vary by several inches depending on chassis or equipment variations. Please contact your dealer for further information.
2. Capacities are based on measurements prior to tank installation. Slight capacity variations can result due to installation applications.
3. Capacities shown are tank manufacturer's listed water capacity (W/C). Actual filled LP capacity is 80% of listing due to overfilling prevention device on tank.
4. Actual towing capacity is dependent upon your particular loading and towing circumstances, which includes the GVWR, GVWR and CCWR as well as adequate trailer brakes. Please refer to the Operator's Manual of your vehicle for further towing information.
5. See separate chassis warranty.

6. See your dealer for complete warranty information.
 N/A: Not Available

Not all items available in combination. See dealer for details.
 Winnebago's[®] continuing program of product improvement makes specifications, equipment, model availability, and prices subject to change without notice. Published content reflects the most current product information at time of printing. Please consult your dealer for individual vehicle features and specifications.

