

# Sunstar LX

**WINNEBAGO**



## ***Why Sunstar LX?***

- Touch screen Radio/Rearview Monitor System
- Dash workstation with USB cable connection
- Versa easy-swivel driver's seat
- One-piece fiberglass roof
- Available exterior entertainment center (NA 30T)
- Available powered StudioLoft™ bed
- Powered patio awning
- Soft Primera furniture
- Bunk beds (35B)
- Curb view window
- Water heater w/motoraid
- Available A/C heat pump(s)
- MCD Duo solar/blackout shades
- Available BenchMark® dinette



On the Cover: 35B Dark Spiral Gray Full-Body Paint

35B Rockslide with Glazed Driftwood Cabinetry

## Value Refined

Introducing the new Sunstar® LX. It's everything you love about the Sunstar® with fresh floorplans and an abundance of enhancements with available features that let you customize your experience. Many of these features have been brought together in the available Interior Upgrade Package that includes

the Dream Dinette™ dining table, hardwood refrigerator door inserts, a vinyl ceiling, and more. The exterior is decked out with chrome accents, a curb view window, and available full-body paint. Bring the family and see for yourself how Winnebago® takes value to a whole new level in the Sunstar LX.



### Recognized Quality

The Recreation Vehicle Dealer Association annually rates RV manufacturers and awards the Quality Circle Award to manufacturers that provide exceptional products, service and support. Winnebago Industries is proud to be the only manufacturer that has received this award every year since its inception.



35B Rockslide with Glazed Driftwood Cabinetry

Want a sofa? Dinette? Both? Four Sunstar LX floorplans with unique lounge designs let you select the perfect living space for your traveling lifestyle. You can even kick back in an extendable sectional sofa in the 35F. LED cabin lighting and MCD roller shades create perfect lighting any time of day to let you enjoy amenities such as the large HDTV and entertainment center. For traveling families, you'll appreciate the available powered StudioLoft that drops from the ceiling to create an extra sleeping space on demand.



MCD Roller Shades



Passenger Seat Reclined



35B HDTV



35B Comfort Sofa Sleeper as Sofa



OnePlace® Systems Monitor



35B BenchMark® Dinette



35B BenchMark Dinette as Bed



35B Comfort Sofa Sleeper as Bed

The LX upgrades are perhaps most noticeable in the galley where you'll find Corian countertops and a flip-up countertop extension, raised-panel refrigerator inserts, and a host of other galley features that come with the available Interior Upgrade Package. The standard microwave can be upgraded to a microwave/convection for greater cooking flexibility.



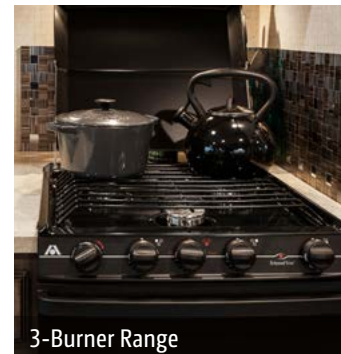
 35B Galley



35B Available Large 4-Door Refrigerator/Freezer



Microwave/Convection Oven



3-Burner Range



Corian Sink Covers (Interior Upgrade Package)



35B Bedroom

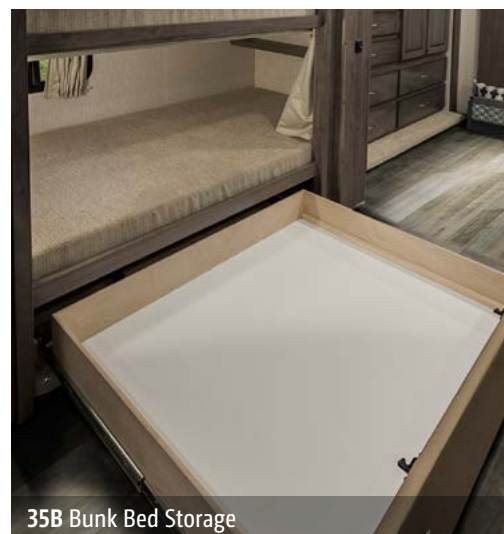
A private master bedroom with a walk-around queen bed is a highlight of every Sunstar LX. Both the 35B and 35F come with a half-bath mid coach in addition to the master bath featuring the BIG Shower for an exquisite bathing experience.



35B Bunk Bed Movie Player



35B Bunk Bed



35B Bunk Bed Storage



35B Wardrobe



35B Mid-Coach Bath



35B BIG Shower



35B Master Bath Vanity



Dash

A Triton® engine powers your cross-country adventures while you sit in the comfort of fully-adjustable cab seats with available 6-way power assist for the driver and available footrest for the passenger. A 6" rearview monitor touch screen controls the radio, CD, and DVD player, which can be upgraded to SiriusXM™ satellite radio at your request. The cab doubles as your office on the road thanks to a dash workstation with a USB and 12-volt powerpoint.



Dash Workstation



Powered Mirrors with Defrost and Available Camera



Your Sunstar LX looks sharp for the long haul with a premium high-gloss sidewall and an available lower front protective mask. Take in the sunset or tailgate in style thanks to a powered awning and an exterior entertainment center with an HDTV and an AM/FM stereo with DVD player (27N, 35B and 35F). Exterior paddle latches with dual latching points allow for quick, confident access to your exterior compartments, including a large pass-through storage bay in the 27N.



35B Powered Patio Awning



Exterior Wash Station



Exterior Service Center



Exterior Storage Compartment



35B Available Exterior Entertainment Center

## Fiberglass Roof

The crowned, one-piece fiberglass roof is backed by a 10-year limited parts-and-labor roof skin warranty.

## Rubber Can't Cut It

Rubber roofs used by competitors can streak and degrade over time.

## Thermo-Panel® Sidewalls

By layering fiberglass and high-density block foam insulation with welded aluminum support structures, we create some of the industry's strongest, most durable and lightweight sidewalls.

## E-Coating

An electrodeposition coating helps protect critical steel components.

**Embedded Steel** Metal substructures embedded into the sidewall provide solid attachment points to keep cabinets and appliances mounted securely in place.

## Laser-Cut Tubing

Precision laser cutters create precision joints in structural steel that are stronger and require less welding.



## Interlocking Joints

Specially engineered interlocking joints connect the floor, sidewalls and roof where competitors often rely on simple screws to bear the weight.



**Solid Framework** Aluminum extruded in our own facility to our exacting standards creates an extremely strong and solid structural framework.

# SUPER STRUCTURE

BUILT TO LAST

Every coach—from our smallest Class C to our largest diesel-pusher model—is built to Winnebago's® legendary SuperStructure® construction standards. It's a process developed and refined over more than 50 years of building some of the strongest, most durable coaches in the industry.

**TESTING** Before rolling out of our factories, every coach undergoes an extensive 113-point inspection. Each coach also passes a high-pressure water test that simulates rain at a rate of 50-inches per hour to check for leaks. During the design process, our computer simulations, physical testing center, and rigorous test track ensure each model is built to last.



**DETAILS** At Winnebago, we treat the features you can't see with the same care as the ones you can. Look in the access panels of some of our competitors' coaches and you'll see loose insulation and wires haphazardly strewn about. Winnebago maintains a clean fit and finish throughout so your coach will last for the long haul.



**BUILT IN-HOUSE** We extrude our own aluminum. We rotocast our own plastic components. In fact, we manufacture most of our own parts so they are designed to fit the space, rather than fitting the space to an awkward off-the-shelf component size.



**SUPER  
STRUCTURE**  
BUILT TO LAST

Visit [BetterBuiltRVs.com](http://BetterBuiltRVs.com) to gain real insight into what goes into a Winnebago motorhome.

**TAKE A TOUR** We're proud of our processes, state-of-the-art facilities, and the people who make Winnebago number one. We invite you to visit our complex in Forest City, Iowa, for a firsthand look at the dedication and technology behind every motorhome we build.

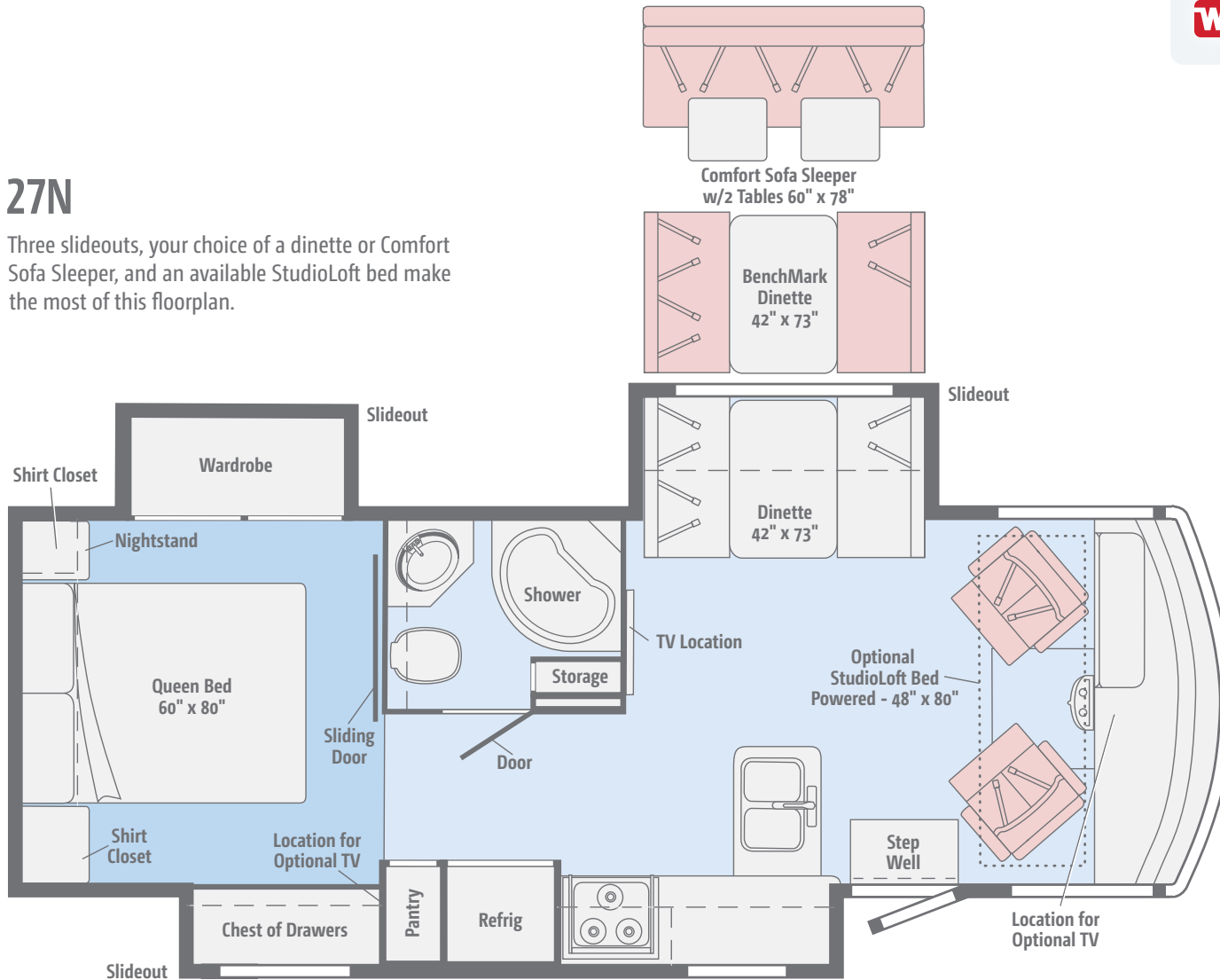
Call (641) 585-6936 or (800) 643-4892 or visit us online at [Winnebagolnd.com/company/visit](http://Winnebagolnd.com/company/visit) for more information.



[Click here to explore this floorplan's web page.](#)

# 27N

Three slideouts, your choice of a dinette or Comfort Sofa Sleeper, and an available StudioLoft bed make the most of this floorplan.

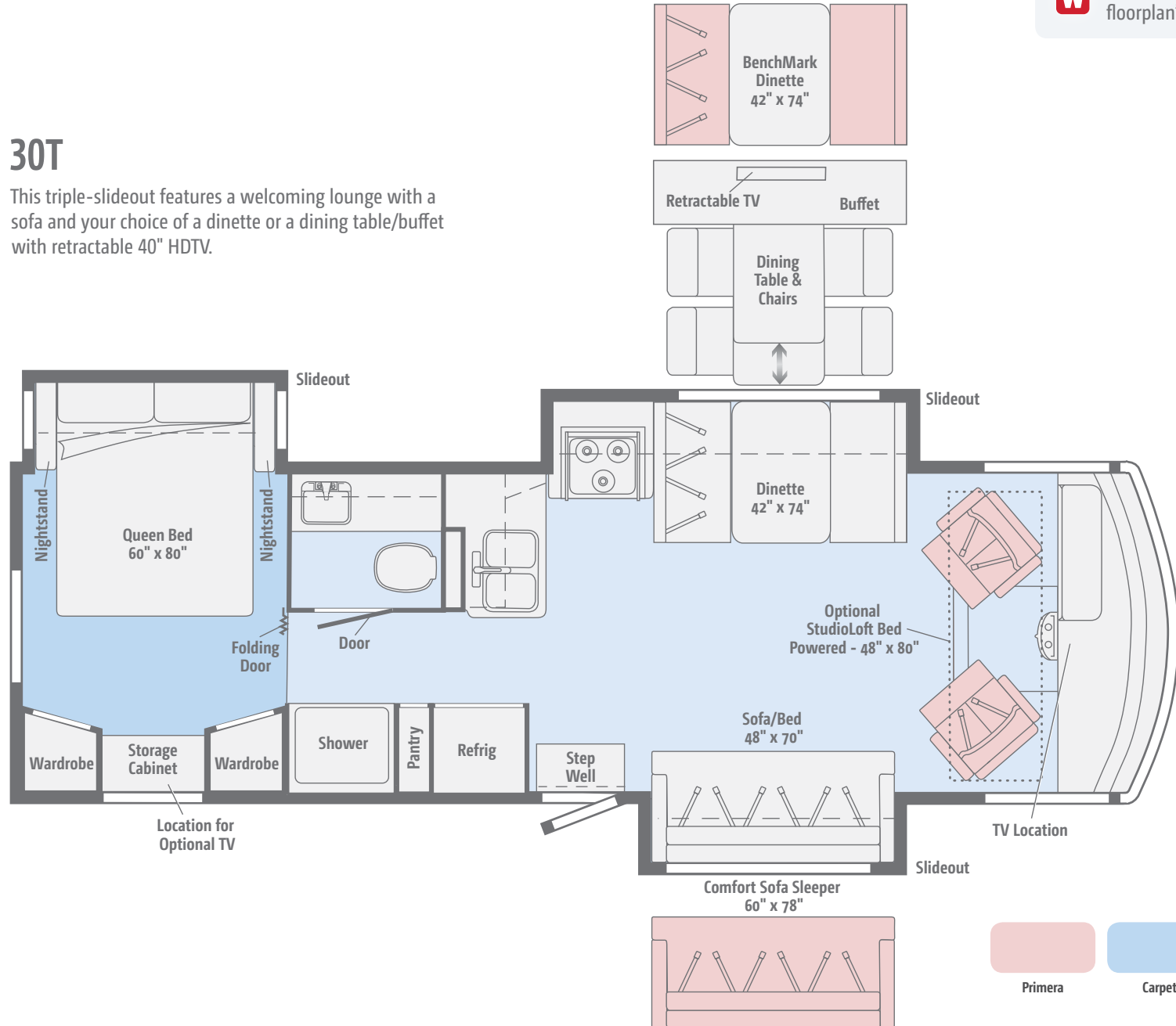


Primera	Carpet	Vinyl

[Click here to explore this floorplan's web page.](#)

## 30T

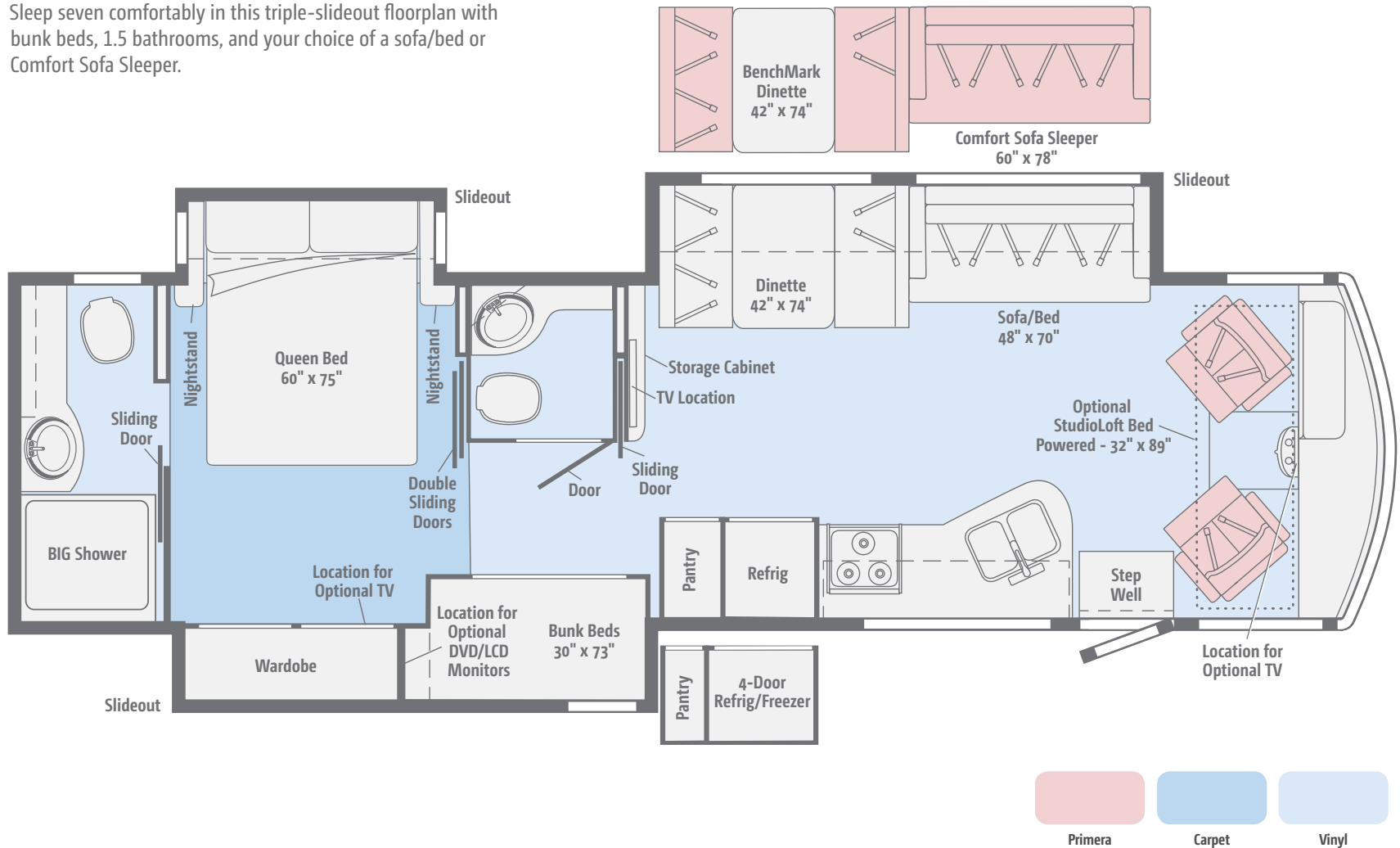
This triple-slideout features a welcoming lounge with a sofa and your choice of a dinette or a dining table/buffet with retractable 40" HDTV.



Click here to explore this floorplan's web page.

### 35B

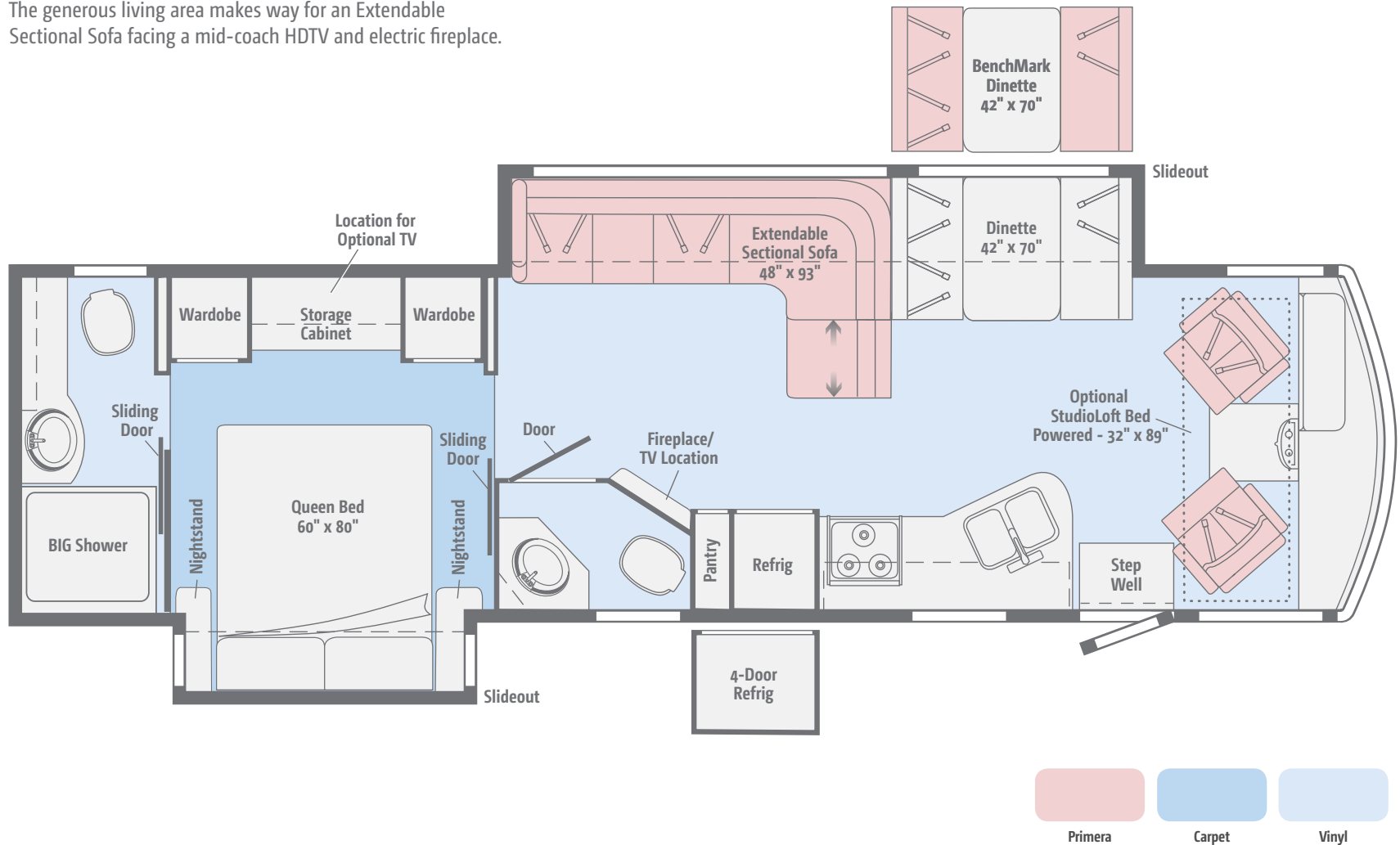
Sleep seven comfortably in this triple-slideout floorplan with bunk beds, 1.5 bathrooms, and your choice of a sofa/bed or Comfort Sofa Sleeper.



Click here to explore this floorplan's web page.

# 35F

The generous living area makes way for an Extendable Sectional Sofa facing a mid-coach HDTV and electric fireplace.



Choose from four fabric collections and three wood finishes.

## Infinity



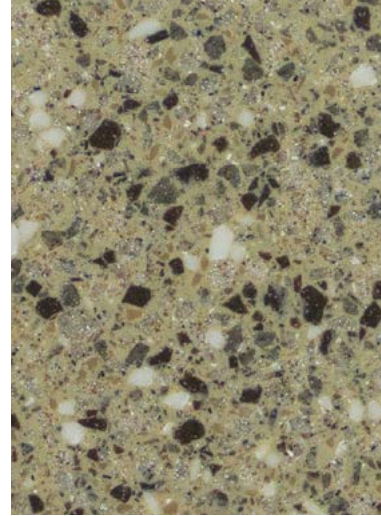
Primera



Feature Fabric



Bedspread



Corian Countertop



Vinyl Flooring



Honey Cherry



Coffee-Glazed  
Vienna Maple



Glazed  
Driftwood

Winnebago® reserves the right to change décor materials and specifications without notice or obligation.



Choose from four fabric collections and three wood finishes.

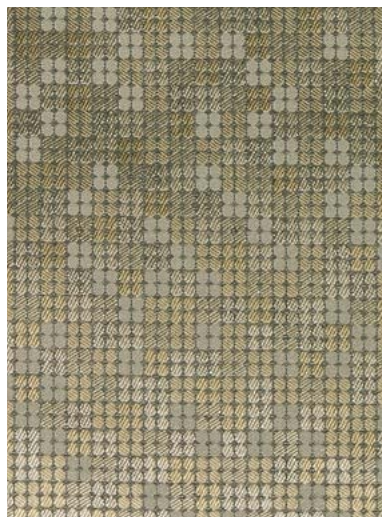
## Rockslide



Primera



Feature Fabric



Bedspread



Corian Countertop



Vinyl Flooring



Honey Cherry



Coffee-Glazed  
Vienna Maple



Glazed  
Driftwood

Winnebago® reserves the right to change décor materials and specifications without notice or obligation.

Choose from four fabric collections and three wood finishes.

## Legend



Primera



Feature Fabric



Bedspread



Corian Countertop



Vinyl Flooring



Honey Cherry



Coffee-Glazed  
Vienna Maple



Glazed  
Driftwood

Winnebago® reserves the right to change décor materials and specifications without notice or obligation.

Choose from four fabric collections and three wood finishes.

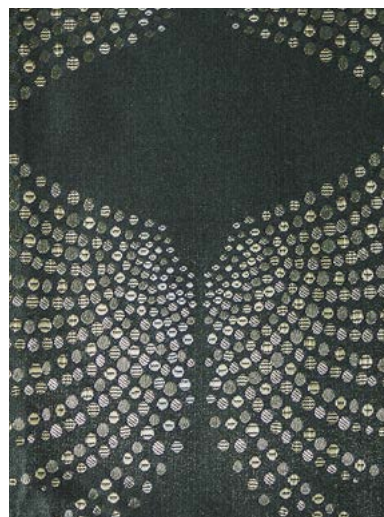
## Stardust



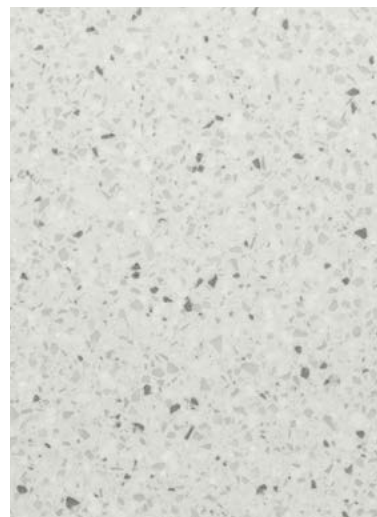
Primera



Feature Fabric



Bedspread



Corian Countertop



Vinyl Flooring



Honey Cherry



Coffee-Glazed  
Vienna Maple



Glazed  
Driftwood

*Winnebago® reserves the right to change décor materials and specifications without notice or obligation.*

The Sunstar LX comes standard with a premier high-gloss deluxe graphics package, or upgrade to available full-body paint.



Solar Flare Pearl  
DELUXE GRAPHICS

The Sunstar LX comes standard with a premier high-gloss deluxe graphics package, or upgrade to available full-body paint.



**Arctic Silver**  
FULL-BODY PAINT



**Cayenne**  
FULL-BODY PAINT



**Cream**  
FULL-BODY PAINT



**Dark Spiral Gray**  
FULL-BODY PAINT

Weights & Measures	27N	30T	35B	35F
Length	28'5"	31'	36'5"	35'5"
Exterior Height <sup>1</sup>	12'2"	12'1"	12'5"	12'5"
Exterior Width <sup>2</sup>	8'5.5"	8'5.5"	8'5.5"	8'5.5"
Exterior Storage <sup>3</sup> (cu. ft.)	123	118	160	154
Awning Length	19'	17'	13'	16'
Interior Height	6'8"	6'8"	6'8"	6'8"
Interior Width	8'0.5"	8'0.5"	8'0.5"	8'0.5"
Freshwater Tank Capacity <sup>4</sup> (gal.)	64	78	93	74
Water Heater Capacity (gal.)	6	6	6	6
Holding Tank Capacity - Black/Gray <sup>4</sup> (gal.)	43/53	41/42	41/46 & 41/51*	41/51 & 21/NA**
LP Capacity <sup>5</sup> (gal.)	18	18	18	18
Fuel Capacity (gal.)	80	80	80	80
GCWR <sup>6</sup> (lbs.)	23,000	23,000	26,000	26,000
GVWR (lbs.)	18,000	18,000	22,000	22,000
GAWR - Front (lbs.)	7,000	7,000	8,000	8,000
GAWR - Rear (lbs.)	12,000	12,000	15,000	15,000
Wheelbase	178"	190"	242"	228"
Seating Capacity	5	7	8	7

\* The 35B uses separate black and gray tanks for each bathroom

\*\* The 35F uses separate black tanks for each bathroom

## Ford® F53 Chassis

3-valve Triton® V10 engine SEFI, TorqShift™ 6-speed automatic transmission w/tow/haul, 175-amp. alternator

Hydraulic brakes w/ABS

Trailer Hitch<sup>6</sup> 5,000-lb. drawbar/500-lb. maximum vertical tongue weight

7-pin connector

Stainless steel wheel liners w/19.5" tires (27N, 30T)

Stylized aluminum wheels w/22.5" tires (35B, 35F)

Automatic hydraulic leveling jacks



Ford® F53 Chassis

## Optional Package Upgrade

**Interior Upgrade Package** soft vinyl ceiling, flip-up countertop extension (NA 27N), Dream Dinette™ dining table, range cover, two Corian® sink covers, raised-panel refrigerator inserts, throw pillow(s)

## Cab Conveniences

**Radio/Rearview Monitor System** DVD receiver with 6.2" LCD color touch screen, handheld remote, iPod®/MP3 input, rear color camera, Bluetooth®, SiriusXM®-ready, Spotify®, AppRadio One

**Cab seats** adjustable armrests, fixed lumbar support, and multi-adjustable slide/recline/swivel

3-point seat belts

Chassis/house battery radio power switch

Power steering w/tilt wheel

Power mirrors w/defrost

Front wraparound curtain

Cruise control

Map lights

Sunvisors

Dash workstation w/USB and 12-volt powerpoint

## OPTIONAL EQUIPMENT

6-way power driver seat

Passenger seat w/footrest

Dual-speed defroster fans

SiriusXM® satellite radio prep, receiver, antenna (subscription not included)

Sideview video camera system

## Interior

32" HDTV (front 30T)

39" HDTV (35F)

48" HDTV (27N, 35B)

Amplified digital TV antenna system

Satellite system ready

MCD solar/blackout roller shades (in select areas)

OnePlace® systems monitor

Powered ventilator fan (lounge)

Powered ventilator roof vent (27N bedroom)

Powered roof vent (bath)

Tinted dual-pane windows

LED lights

Electric fireplace (35F)

## OPTIONAL EQUIPMENT

StudioLoft™ (powered w/ladder)

Dining table/buffet/chairs w/retractable 40" HDTV (30T)

32" HDTV (front) (27N, 35B)

48" HDTV (27N, 35B)

Vinyl flooring throughout

## Galley

**Corian countertops** w/decorative backsplash

**2-door refrigerator/freezer**

**Microwave oven** (30T)

**Microwave oven** w/range fan (NA 30T)

**3-burner range top** w/storage below

**Vented range hood** (30T)

### OPTIONAL EQUIPMENT

**3-burner range** w/oven

**Microwave/convection oven** (30T)

**Microwave/convection oven** w/range fan (NA 30T)

**4-door refrigerator/freezer** w/icemaker and water purifier (35B, 35F)

## Bath

**Laminate countertop**

**Flexible showerhead**

**Textured glass shower door**

**Skylight**

**Porcelain toilet(s)** w/foot pedal and sprayer

**Medicine cabinet**

## Bedroom

**Queen bed** w/innerspring mattress and storage below

**Bedsread, pillows, and shams**

**Headboard** (NA 30T)

**Bunk beds** w/foam mattresses, mattress covers, and privacy curtains (35B)

### OPTIONAL EQUIPMENT

**2 DVD players** w/10.1" LCD monitors and headphones (35B bunk beds)

**24" HDTV** (27N, 30T)

**28" HDTV** (35B)

**32" HDTV** (35F)

## Exterior

**Premium high-gloss sidewall skin**

**Automatic entrance door steps**

**Powered patio awning**

**Front mud flaps**

**Porch light** w/interior switch

**Incandescent lighted storage compartments** (in select compartments)

**Ladder**

### OPTIONAL EQUIPMENT

**Lower front protective mask** (w/full-body paint only)

**Entertainment Center** 32" HDTV w/remote, AM/FM stereo w/DVD player w/remote, speakers (27N, 35B, 35F)

## Heating & Cooling System

**14,800 BTU air conditioner** w/ChillGrille™ (27N, 30T)

**2 high-efficiency air conditioners** w/ChillGrille and Energy Management System (35B, 35F)

**30,000 BTU low-profile furnace** (27N, 30T)

**40,000 BTU low-profile furnace** (35B, 35F)

### OPTIONAL EQUIPMENT

**Air conditioner heat pump** (27N, 30T)

**2 high-efficiency air conditioner heat pumps** (35B, 35F)

**All-Weather Upgrade Package** (30T) 5,500-watt Cummins Onan® Marquis Gold™ gas generator, 2nd high efficiency A/C with heat pumps, 50-amp. power cord, automatic changeover switch, shoreline/generator

## Electrical System

**AC/DC load center, 45-amp. converter/charger** (27N, 30T)

**AC/DC electrical distribution system, 45-amp. converter/charger** (35B, 35F)

**30-amp. power cord** (27N, 30T)

**50-amp. power cord, shoreline/generator automatic changeover switch** (35B, 35F)

**PowerLine® Energy Management System** (NA 30T)

**4,000-watt Cummins Onan MicroQuiet™ gas generator** (27N, 30T)

**5,500-watt Cummins Onan Marquis Gold gas generator** (35B, 35F)

**2 deep-cycle Group 24 batteries**

**Battery disconnect system** (chassis and coach)

**Automatic dual-battery charge control**

**Auxiliary start circuit**

**AC duplex receptacle**

**Cable TV input**

**Portable satellite dish hookup, power cord**

**Exterior antenna jack**

### OPTIONAL EQUIPMENT

**1,000-watt AC/DC inverter** w/remote panel

**2 deep-cycle Group 31 batteries** w/4-door refrigerator/freezer w/icemaker (35B, 35F)

## Plumbing System

**Service Center** colored labels, pressurized city water hookup w/diverter valve, drainage valves, exterior wash station w/lighted pump switch, 10' sewer hose

**6-gallon 110-volt/LP water heater** w/motoraid

**Heated holding tank compartment**

**Permanent-mount LP tank** w/gauge

**On-demand water pump**

**TrueLevel™ holding tank monitoring system**

**Winterization Package water heater bypass valve and siphon tube**

**LPG accessory connection** (patio area)

**Gravity tank fill** w/lockable door (NA 35B)

**Holding tank flushing system** (black tank only)

**Sewage pump** (macerator) (35F)

## Safety

**Child seat tether anchor** (forward facing dinette seat)

**LP, smoke, and carbon monoxide detectors**

**10 BC fire extinguisher**

**Ground fault interrupter**

**High-mount brake lamp**

## Warranty<sup>7</sup>

**12-month/15,000-mile basic limited warranty<sup>8</sup>**

**36-month/36,000-mile limited warranty on structure<sup>8</sup>**

**10-year limited parts-and-labor warranty on roof skin<sup>8</sup>**

### FOOTNOTES

- The height of each model is measured to the top of the tallest standard feature and is based on the curb weight of a typically equipped unit. The actual height of your vehicle may vary by several inches depending on chassis or equipment variations. Please check with your dealer for further information.
- Floorplans feature a wide-body design - over 96". In making your purchase decision, you should be aware that some states restrict access on some or all state roads to 96" in body width. Before making your purchase decision, you should confirm the road usage laws in the states of interest to you.
- The load capacity of your motorhome is designated by weight, not by volume, so you cannot necessarily use all available space when loading your motorhome.
- Capacities are based on measurements prior to tank installation. Slight capacity variations can result due to installation applications.
- Capacities shown are tank manufacturer's listed water capacity (W.C.). Actual filled LP capacity is 80% of listing due to overfilling prevention device on tank.
- Actual towing capacity is dependent on your particular loading and towing circumstances which includes the GVWR, GAWR, and GCWR as well as adequate trailer brakes. Please refer to the Operator's Manual of your vehicle for further towing information.
- See separate chassis warranty.
- See your dealer for complete warranty information.

NA Not Available

Not all items available in combination. See dealer for details.

Winnebago's® continuing program of product improvement makes specifications, equipment, model availability, and prices subject to change without notice. Published content reflects the most current product information at time of printing. Please consult your dealer for individual vehicle features and specifications.



Let us host  
your next

# Adventure



[WGOAdventures.com](http://WGOAdventures.com)

Connect with Winnebago (Click one of the following)



Like us



Follow us



Watch us



Show your Winnebago love  
with high-quality gifts and wearables.



Apparel | Gifts | Parts | Gear

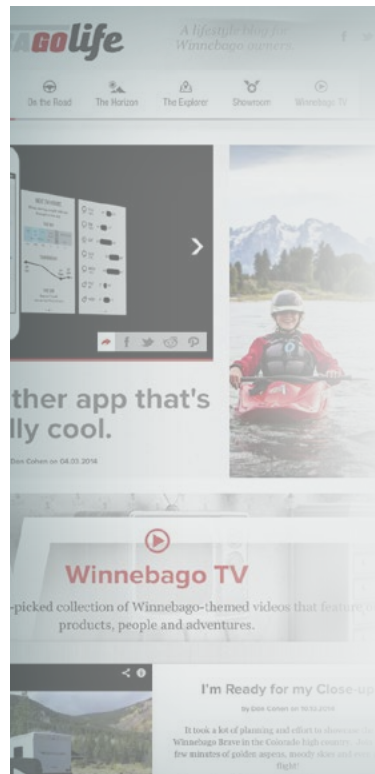
[WinnebagoOutdoor.com](http://WinnebagoOutdoor.com)

Find your style



## WinnebagoInd.com Has All The Answers

Visit [WinnebagoInd.com](http://WinnebagoInd.com) on your computer, smartphone, or tablet for the latest product information and updates.



## Welcome to GoLife!

Visit our lifestyle blog for motorhome news, personal travelogues, and community stories.

[WinnebagoLife.com](http://WinnebagoLife.com)

# GoLife



# **PREFERRED CARE PROGRAM**

We back our motorhomes with best-in-class support both before and after the sale:

- 12-month/15,000-mile basic limited warranty
- 36-month/36,000-mile limited warranty on structure
- 10-year limited parts-and-labor warranty on fiberglass roof
- Complimentary 24-hour roadside assistance program
- TripSaver® Fast Track Parts guarantees that in-stock warranty parts ship directly to your dealer within 24 hours
- National dealer service network



For more information:  
[WGOService.com](http://WGOService.com)



From RV to personal insurance, Winnebago RV Insurance can provide all the coverage and services you need to feel at home on the road.

**For more information:**  
**(800) 642-4892**



## CONTACT US

### GENERAL INQUIRIES

Corporate Switchboard  
(641) 585-3535

### CURRENT PRODUCT OWNER AND SERVICE-RELATED INQUIRIES

(800) 537-1885  
or [winnebagoind.com](mailto:winnebagoind.com)

### NEW VEHICLE SALES INQUIRIES

[sales@winnebagoind.com](mailto:sales@winnebagoind.com)

### FAX

(641) 585-6966

### POSTAL ADDRESS

Winnebago Industries, Inc.  
P.O. Box 152  
Forest City, IA 50436

### STREET ADDRESS

Winnebago Industries, Inc.  
605 West Crystal Lake Road  
Forest City, IA 50436



## Join the Club, Join the Fun

Here's the perfect way to begin your life on the road as the owner of a new Winnebago – by joining the exclusive WIT Club. Start your adventure with other fun-loving WIT Club members from across the country and get the most out of your new Winnebago motorhome.



### Members enjoy:

- Caravans and rallies
- Newsletters
- Local and state group activities
- RV travel benefits

See more at  
[WITClub.com](http://WITClub.com)



## Grand National Rally

Each year, thousands of Winnebago owners descend upon Forest City, Iowa. Rally-goers enjoy an unforgettable week reconnecting with friends, taking tours, participating in activities, and more. Join the adventure next July!