

2004 *Sunova*[®]



A BETTER WAY TO TRAVEL

AFFORDABLE CLASS A COMFORT

The Itasca Sunova makes the dream of owning a Class A motor home a reality for more people every year. But the reason for the Sunova's popularity is not merely its price. It's because we make it affordable without cutting corners. You get the quality manufacturing made famous by Winnebago Industries® and a host of features you'd expect to find in more pricey models. Features like a hoop-base swivel/glider chair, a 25" stereo TV, the RV Radio® and the OnePlace™ Systems Center.

These and other key features are highlighted with pictures and text throughout this brochure. This may be more detail than you might find in other motor home brochures. But we think it's important to provide as much information as possible to help you better choose the motor home that's right for you. We recommend a test drive at your local Itasca dealer so you can truly experience the 2004 Sunova. See how easy it is to make your Class A dreams come true.



35N Ocean Pacific with Portsmouth Oak

STOREMORE

▲ ► Experienced RVers choose Itasca motor homes for their innovative designs and reputation for quality. The Sunova, for example, offers thoughtful features like: Congoleum® vinyl floorcovering in the galley, a one-piece fabric ceiling, a large assist handle by the door, abundant overhead lighting with wall switches and the convenience of a recessed, OnePlace Systems Center. You'll notice many features that simply aren't available in competitive models at this level, such as ceiling-ducted roof air with a wall-mounted thermostat and floor-ducted heating for better climate control. The Sunova even includes the StoreMore® slideout system, which allows interior cabinets and exterior storage compartments to extend with the slideroom for easy access.

ONE PLACE™



◀ Tired of tripped electrical circuits? The PowerLine® Energy Management System monitors electrical usage by cycling appliances off when demand exceeds supply. Appliances are automatically cycled back on when power is available. This fully automated system allows you to run two roof air conditioners without interruption. (NA 27C and 30B)

Interior Decors



Cilantro



Ocean Pacific



Quarry Ash



Portsmouth Oak

▲ Stitchcraft quality and innovation are featured throughout the Sunova.

The hoop-base swivel/glider chair is especially relaxing. It moves easily to your favorite location and locks in place while traveling. It's a standard Sunova feature.



Sunova
2004



▲ Take a break from the great outdoors and enjoy the entertainment provided in the Sunova. The 25" stereo TV comes standard, and you can increase your viewing options with the available DVD/VCR combo and a digital satellite dish. With the available 130 watt inverter, you can watch TV even when you're not connected to shoreline or generator power. The beautiful Portsmouth Oak cabinetry combines Old World attention to detail and advanced, computerized manufacturing for unparalleled fit, finish and durability.



◀ The in-line galley is loaded with appliances you need for making full-course meals, including a microwave, a Magic Chef® three-burner range with oven and a two-door refrigerator/freezer for all your cold storage needs. Flip up the countertop extension and insert the sink cover for additional work space.



◀ Winnebago Industries engineers teamed with the radio manufacturer to create the RV Radio specifically for RV use. This exclusive feature includes an AM/FM stereo, cassette, CD player and a built-in weather band for immediate weather updates. Its large control knobs and buttons are easy for anyone to operate.



◀ RVers are falling in love with two-way radios and now they're available with every Sunova. The set of four two-way radios recharges from the coach batteries using the built-in charging station. Nickel metal hydride batteries provide up to 15 hours of standby time and 90 minutes of talk time on a single charge.



◀ You'll enjoy the storage space provided by the large pantry. Pullout trays are included in the 27C, 33L and 35N for added flexibility. If hanging space is what you need, the pantry storage cabinet on the 27C and 30B has removable shelves and can be converted into a wardrobe.

ELEGANT INTERIORS

► Driving is one of the joys of owning a motor home. The Sunova enhances that experience with large, easy-to-reach dash controls that are well-labeled so they can be identified at a glance. An available rearview monitor system ensures easy backing.



◀ Our designers worked hard to give you a more spacious bathroom area. This allows for a residential-height toilet with foot-pedal flush, and large lavatory and medicine cabinets. You can even optimize your storage space when traveling by using the removable clothes rod located in the shower.

► Sit back and enjoy the ride. Custom Stitchcraft driver and passenger seats feature a high-back frame with a fixed lumbar support that is easy on your back. Both chairs swivel and slide for easy positioning. They also include dual-position armrests and multi-position recline for comfort on longer trips.



▼ What a difference a Class A bedroom makes. It offers more of the comforts of home, like a queen-size Serta® mattress, and plentiful storage in the wardrobe, shirt closet and overhead cabinets. The 35N is especially spacious with a rear slideout. A 13" color TV with remote and a video selection system are available in every bedroom.



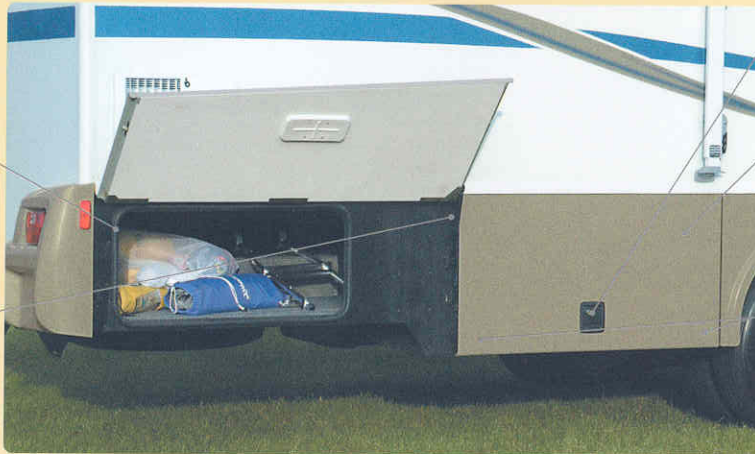


▲ The StoreMore slideout system is a Winnebago Industries original and still the industry's premier slideout system. StoreMore allows the large exterior storage compartments, which accommodate oversized and odd-shaped items, to extend with the slideroom for easy access. The StoreMore slideout system on the 2004 Sunova features a dual-ram/dual-motor, electric slide mechanism developed in conjunction with Kwikkee®. It's the first electric powered slideout system to meet our stringent quality and performance standards. Electronic synchronization improves room movement and sealing, while built-in diagnostics make servicing easier.

Compartment lights illuminate stored items.

Advanced seal planes offer protection from the elements.

Gas struts assist with opening and holding doors open.



Single-paddle latches offer one-handed operation.

One-piece, metal-skin doors feature composite construction so they are exceptionally light and strong.

Dual latching mechanisms secure both ends of the door for added strength and an improved seal.



◀ An Onan® generator is standard and provides 110-volt power when shoreline service is unavailable. The 27C and 30B feature a 4,000 watt Onan MicroQuiet™, while the 33L and 35N feature a 5,500 watt Onan Marquis Gold™.



◀ Relax outdoors while you listen to your favorite music on the available exterior entertainment center. It includes: an AM/FM stereo, CD player, speakers, 12-volt powerpoint, TV jack, and a removable table.



▲ End the frustration of water runoff dripping on your windows, thanks to an innovative, built-in, awning rail gutter system that drains water away from the entrance door and windows.

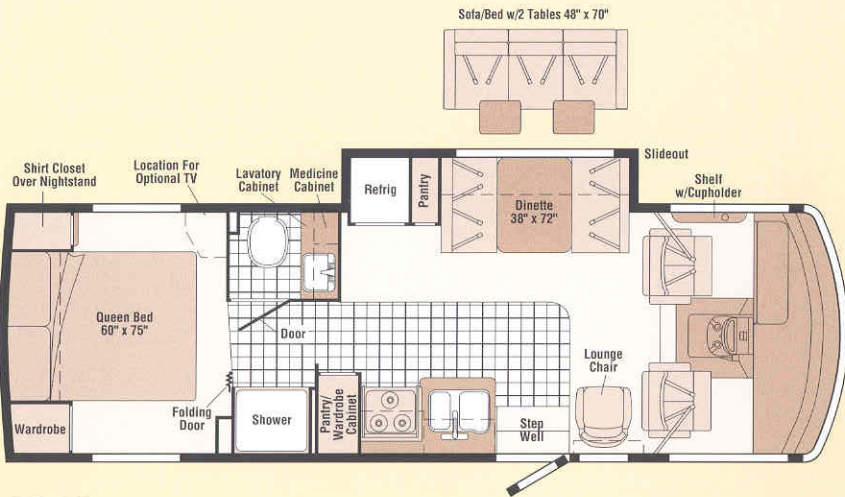


▲ Tow your favorite toys. The standard hitch offers a 5,000-lb. towing capacity and 350-lb. tongue weight to accommodate your towing needs.²

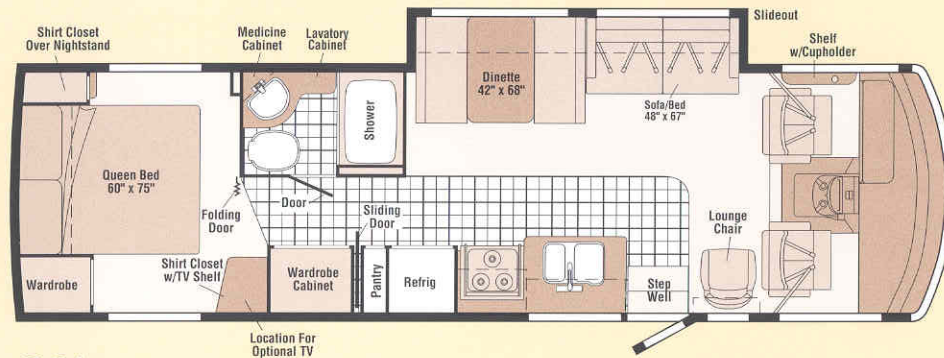
▼ Convenience is the key to the Sunova's service center. A heated holding tank compartment and water heater winterization bypass valve let you extend your camping season. The innovative QuickPort™ Service Connection Hatch provides slots for the sewer hose, garden hose and power cord, eliminating the hassle of feeding them through a cumbersome access hole. An exterior wash station is also available for easy cleanups.



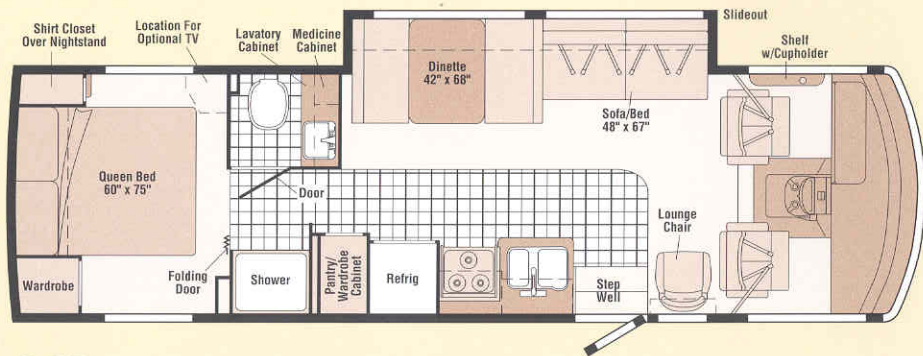
FLOORPLANS



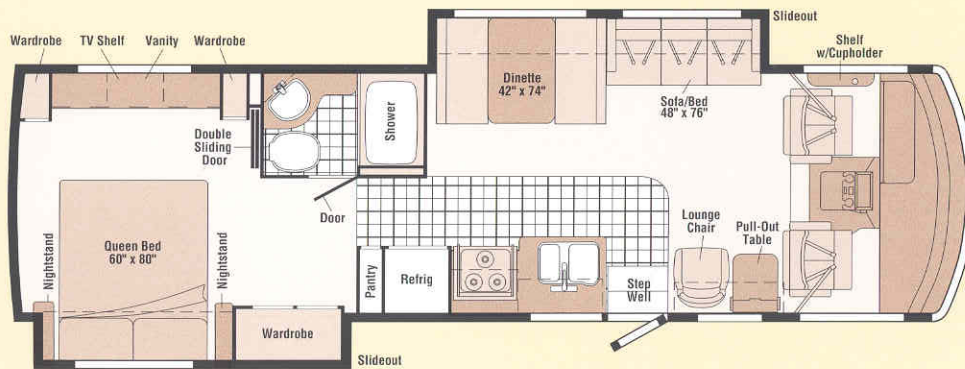
27C



33L



30B



35N *New*



Note: Dimensions shown are for sleeping space only and may vary due to styling differences. Dashed lines denote overhead storage areas.

SPECIFICATIONS

Chassis Information	27C	30B	33L	35N NEW
Length	27'11"	30'10"	33'2"	35'2"
Exterior Height ¹ w/A/C – F / W	12'0" or 12'2" / 12'0"	11'11" or 12'1" / 11'1"	11'11" or 12'1" / 11'1"	12'2" or 12'4" / 12'2"
Exterior Width ²	8'6"	8'6"	8'6"	8'6"
Exterior Storage ³ (cu. ft.)	79.9	107.4	115.9	125.1
Interior Height	6'8"	6'8"	6'8"	6'8"
Interior Width	8'5"	8'5"	8'5"	8'5"
Fresh Water Capacity w/Heater (gal.)	75	75	75	72
Holding Tank Capacity – Black / Gray (gal.)	36 / 46	41 / 40	41 / 40	40 / 35
LP Capacity ⁴ (gal.)	18	18	18	18
Fuel Capacity – F / W (gal.)	NA / 40	75 / 75	75 / 75	75 / 75
GCWR – F / W (lbs.)	NA / 19,000	26,000 / 22,000	26,000 / 22,000	26,000 / 26,000
GVWR – F / W (lbs.)	NA / 15,000	18,000 / 18,000	18,000 / 18,000	20,500 / 20,700
GAWR – F / W – Front (lbs.)	NA / 6,000	7,000 / 6,000	7,000 / 6,000	7,000 / 7,500
GAWR – F / W – Rear (lbs.)	NA / 11,000	11,000 / 12,000	11,000 / 12,000	13,500 / 13,500
Wheelbase	168"	190"	208"	228"

F Ford®

W Workhorse™

Standards & Options

27C 30B 33L 35N **Automotive/Chassis**

- S S S Chassis** – Ford® 6.8L SOHC Triton® V10 310-hp, 4-speed overdrive transmission, hydraulic brakes, 4-wheel ABS, 130-amp. alternator
- S O O Chassis** – Workhorse™ 8.1L Vortec V8 340-hp, 4L85E 4-speed overdrive transmission, 4-wheel anti-lock disc brakes, 145-amp. alternator
- O Chassis** – Workhorse™ 8.1L Vortec V8 340-hp, Allison 1000 5-speed overdrive transmission, hydraulic brakes, 145-amp. alternator
- S S S S Tire spare, Tire Tool** wrench, **Trailer Hitch**⁵ 5,000-lbs. draw bar/350-lbs. maximum vertical tongue weight & wiring, **Wheelcovers**
- O O O O Leveling Jacks** hydraulic, w/touch pad control, Kwiikee®
- O O O Shocks/Stabilizer Package** front, Workhorse™
- O O O O Wheel Liners** stainless steel

27C 30B 33L 35N **Cab Area & Driver Conveniences**

- S S S S Beverage Holder** passenger side, **Cab Seats** (fabric) w/3-point shoulder & lap seat belts w/retractors, armrests, lumbar support (fixed), multi-adjustable slide/recline & swivel, **Cigarette Lighter/12-Volt Powerpoint**, **Convenience Tray** w/cupholders, **Cruise Control**, **Map Light**, **Map Pocket**, **Steering Wheel** tilt w/power assist, **Sunvisors**, **Trim Panel** driver-side w/cupholder, storage tray & bubble level indicator, **Window** (driver & passenger) full slider w/screen, **Windshield Wipers** intermittent
- O O O O Defroster Fans (2)** auxiliary 2-speed w/instrument panel switch
- O O O O Monitor System** rearview w/single camera & one-way audio, Audiovox®

27C 30B 33L 35N **Entertainment**

- S S S S (Cab) AM/FM stereo** cassette/CD, speakers (4), **Radio Power Switch** main/auxiliary battery, **Satellite System Ready**, **TV 25" Color AC** stereo w/remote, **TV Enhancement Package** antenna (amplified), 12-volt powerpoints, interior jacks, coax wiring, cable input, splitter
- O O O O DVD/VCR Stereo Combo** w/remote
- O O O O Entertainment Center (Exterior)** w/CD player, DC receptacle, AC duplex receptacle, AM/FM radio, TV jack, radio antenna, speakers (2), lockable compartment, removable TV table
- O O O O Radios (4)** two-way, charging station
- O O O O Satellite Dish Antenna** RV digital, manual
- O O O O TV 13" Color DC** w/remote, video selection system, bedroom

27C 30B 33L 35N **Interior**

- S S S S Blinds** mini (louge, dinette), **Ceiling fabric**, **Clock**, **Curtain** front wraparound w/track, **Lights** reading, adjustable halogen (overheads), **Lights** ceiling, incandescent w/wall switches, **Picture**, **Roof Vent** nonpowered lounge, **Shades** pleated (bedroom)
- O O O O Roof Vent** powered

27C 30B 33L 35N **Cabinetry**

- S S S S Portsmouth Oak**

27C 30B 33L 35N **Countertops**

- S S S S Laminate** w/T-mold edging

27C 30B 33L 35N **Floorcovering**

- S S S S Carpeting** w/pad, **Vinyl** bath & galley, Congoleum®

27C 30B 33L 35N **Furniture**

- S S S S Dinette** w/access to storage below
- O Sofa** tables (2)
- S S S Sofa** w/throw pillow
- S Lounge Chair** hoop-base, swivel/glider, cabinet w/table, magazine rack
- S S S Lounge Chair** hoop-base, swivel/glider

27C 30B 33L 35N **Galley**

- S S S S Countertop** w/flip-up extension, **Faucet** single-control, **Microwave Oven** Samsung® **Pantry**, **Range Hood** vented w/light & fan, **Range** three-burner (one high-output) w/oven, **Magic Chef**®, **Refrigerator/Freezer** double-door, **Sink** recessed, molded, double-bowl w/sink cover (countertop material), **Wall Border**

- 27C 30B 33L 35N
- Bath**
- S S S S Cabinets lavatory, medicine, **Faucet (Lavatory)** dual-control, **Faucet (Shower)** dual-control w/flexible showerhead, **Light** shower, **Roof Vent** powered, **Shower** w/removable clothes rod, **Shower Door** glass, **Shower Skylight**, **Sink**, **Tissue Holder**, **Toilet** w/foot-pedal flush, **Towel Rack** 3-rod, mounted to door, **Wall Border**
- S S **Mirror** frameless w/beveled edge
- S S **Towel Ring**

- 27C 30B 33L 35N
- Bedroom**
- S S S S **Bed** queen, Serta® innerspring, w/underbed storage, **Bedspring** pillow shams, throw pillow, headboard, **Lights** decorative wall lamps, **Nightstand(s)**, **TV Shelf**, **Wall Border**, **Wardrobe Cabinet** carpeted shelf, clothes rod, drawers, light (33L, 35N)
- S S **Shirt Closet**
- S **Shirt Closets (2)**
- S **Vanity Cabinet**

- 27C 30B 33L 35N
- Exterior**
- S S S S **Awning Rails** w/rain gutters, **Door** entrance w/separate screen door, deadbolt lock, **Entrance Door Steps** double, electric w/doorjamb switch, **Light** porch w/interior switch, **Mirrors** manual adjust w/convex, **Mudflaps** front, **Receptacle** AC duplex, **Sidewall Skin** one-piece smooth fiberglass, **Storage Compartments** valance panels, gas strut, single-paddle latch, lights, trunk liner, TriMark® KeyOne™ System
- O O O O **Awning** patio
- O O O O **Ladder**
- O O O O **Mirrors** electric/remote w/defrost
- O O O O **Undercoating** Workhorse™

- 27C 30B 33L 35N
- Systems**
- S S S S **Automotive Heater/Air Conditioner**, **Auxiliary Start Circuit**, **Batteries (Coach) (2)** deep-cycle, group 24, **Battery (Coach)** disconnect system, **Battery Charge Control** automatic dual, **Electrical Distribution System** AC breakers, DC fuses, 45-amp. converter/charger,

- 27C 30B 33L 35N
- Systems (cont.)**
- S S S S **ONEPLACE™ Systems Center** wall-mount, energy management display, battery condition gauge, generator hourmeter gauge, generator start/stop switch, heating/A/C thermostat, holding tank levels, LP tank level, water heater light(s), water heater switch, water pump switch, water tank level, **Power Cord** 30-amp., **QuickPort Service Connection Hatch** city water hookup/tank diverter fill, drainage valves, sewer hose, cable input, power cord, **Sewer Hose** 10', **Tank** holding, heated compartment, **Tank** LP, permanent mount w/gauge, **Water Heater** 6-gallon, electronic ignition, LP gas, **Water Pump** demand, **Water System Winterization Package** bypass valve, water heater, **Water Tank Fill** gravity
- S S **Air Conditioner (Roof)** 14,800 BTU, ceiling-ducted w/wall thermostat
- S S **Air Conditioners (2) (Roof)** high-efficiency, ceiling-ducted w/wall thermostat
- S S **Furnace** 30,000 BTU, low profile, ducted
- S **Furnace** 35,000 BTU, low profile, ducted
- S **Furnace** 40,000 BTU, low profile, ducted
- S S **Generator** 4,000 watt, Onan® MicroQuiet™ gas
- S S **Generator** 5,500 watt, Onan® Marquis Gold™ gas
- O O O O **Inverter** DC/AC, 130 watt
- S S **POWERLINE® Energy Management System**
- O O O O **Wash Station** exterior, w/pump switch located in service center
- O O O O **Water Heater** 6-gallon, electronic ignition w/Motoraid & auxiliary auto heater

- 27C 30B 33L 35N
- Slideout**
- S **Slideout Room** bed/wardrobe w/slideroom cover
- S **STORE-MORE® Slideout Room** dinette/refrigerator w/slideroom cover
- S S S **STORE-MORE® Slideout Room** sofa/dinette w/slideroom cover

- 27C 30B 33L 35N
- Safety**
- S S S S **Assist Bar** interior, **Assist Handle** exterior, **Bumpers** front & rear, **Detectors/Alarms** LP leak, smoke, carbon monoxide, **Fire Extinguisher** 10 B.C., **Ground Fault Interrupter**, **Brake Light** center, high-mount, **Seat Belts** cab, 3-point, **Seat Belts** lap (in selected areas), **Window** escape, **Windshield** laminated safety glass

- 27C 30B 33L 35N
- Warranty®**
- S S S S **12-month/15,000-mile basic warranty,**
36-month/36,000-mile warranty on structure,
10-year limited parts-and-labor warranty on roof skin⁷

- The height of each model is based on the curb weight of a typically equipped unit on the standard chassis. The actual height of your vehicle may vary by as much as 2" depending on chassis or equipment variations.
 - Sunova floorplans feature a wide-body design — over 96". In making your purchase decision, you should be aware that some states restrict access on some or all state roads to 96" in body width. Before making your purchase decision, you should confirm the road usage laws in the states of interest to you.
 - Your motor home's load capacity is designated by weight, not by volume, so you cannot necessarily use all available space when loading your motor home.
 - Capacities shown are tank manufacturer's listed water capacity (W.C.). Actual filled LP capacity is 80% of listing due to overfilling prevention device on tank.
 - Actual towing capacity is dependent on your particular loading and towing circumstances which includes the GVWR, GAWR and GCWR as well as adequate trailer brakes. Please refer to your vehicle's operator's manual for further towing information.
 - See separate chassis warranty details provided in owner's packet.
 - See your dealer for complete warranty information.
- NA Not Available
- S Standard
- O Optional

Winnebago Industries™ continuing program of product improvement makes specifications, equipment, model availability and prices subject to change without notice. Comparisons to other motor homes are based on the most recent information available.

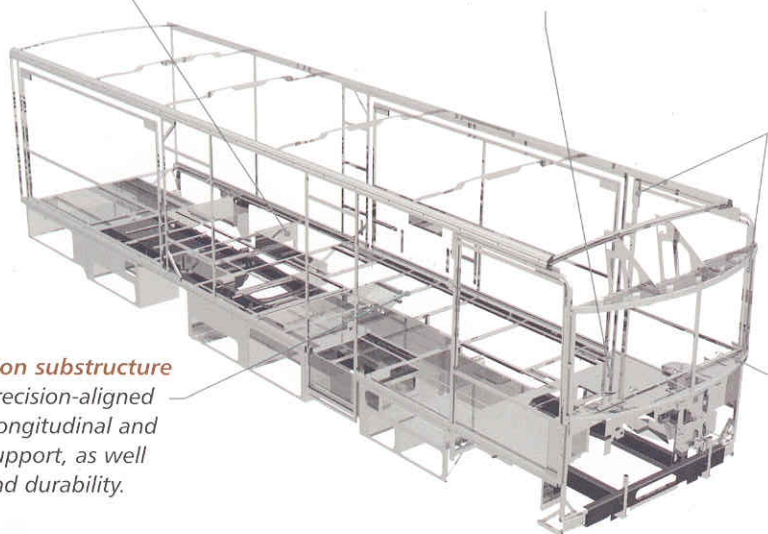
Get noticed in your Sunova when you add the available stainless steel wheel liners and the available patio awning.



Not all motor homes are created equal. SuperStructure® is the term given to Winnebago Industries' structural motor home design and construction. Rather than a single component, it is the culmination of design integration that incorporates steel and aluminum substructures, composite-design laminated floor risers, interlocking joint technology and Thermo-Panel® floor, roof and sidewalls to form an incredibly strong, durable vehicle body.

Tubular steel risers feature a truss-design core for superior strength and provide a stable base for the floor structure and storage compartments.

Critical steel components are treated using an advanced electrodeposition coating process that provides superior corrosion protection.



The foundation substructure assembly is precision-aligned to maximize longitudinal and cross-coach support, as well as strength and durability.

The all-steel cab features integral A and B pillars for added strength and stability.

Windshields are mounted in steel with non-hardening sealants for superior strength, safety and durability. Some manufacturers actually use a rubber gasket to hold the windshield to a fiberglass cab.



◀ **Interlocking joint construction** utilizes advanced aluminum structural components to create integrated floor-to-sidewall and sidewall-to-roof joints. This design

effectively distributes the weight of the walls and roof, making a stronger and more durable body than competitor designs that require screws to carry the weight.

We invented Thermo-Panel sidewall construction and, over the years, have perfected this innovative composite construction process. It combines an exterior fiberglass panel, high-density block foam insulation and welded aluminum support structures to create some of the strongest, most durable and lightweight sidewalls in the industry.



1-year old Itasca fiberglass roof



1-year old competitor's rubber roof

◀ **Built to a higher standard.** The Sunova features a crowned, one-piece fiberglass roof, backed with a 10-year limited parts-and-labor roof skin warranty. Fiberglass offers superior strength, attractiveness and durability over the rubber roofs found on many competitive models which can chalk, streak and degrade over time. Fiberglass also provides increased puncture and tear resistance.

Committed to service. We back our motor homes with the industry's best service after the sale.



- 12-month/15,000-mile basic limited warranty
- 36-month/36,000-mile warranty on structure
- Standard 10-year limited parts-and-labor roof skin warranty
- Complimentary 24-hour roadside assistance program
- TripSaver Fast Track Parts. TripSaver guarantees that in-stock warranty parts ship directly to your dealer within 24 hours.
- National dealer service network



Recognized quality. Recreation Vehicle Dealer Association members annually rate RV manufacturers on the quality of their products, and sales and service support. Winnebago Industries has achieved the coveted Quality Circle award every year since its inception, the only major motor home manufacturer to do so.



All motor homes are not created equal. Learn more about what sets Winnebago Industries apart. Ask your dealer for this guide. It will help you learn what makes Winnebago Industries motor homes distinctly superior to other brands.



WARNING: Joining WIT has been known to cause excessive fun. Winnebago-Itasca Travelers (WIT) is a club for owners of Winnebago Industries motor homes. WIT is a great way to meet people and offers you:

- Caravans and rallies
- Local and state group activities
- RV travel benefits

winnebagoind.com
NYSE listing: WGO

For Sales and Service Information Contact:



©2003 Winnebago Industries, Inc.



Printed in USA

Seat belts are your most important hookup. Always buckle up.