



VIEW

WINNEBAGO

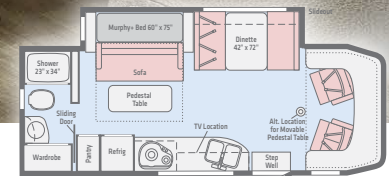


On the Cover: 24G Bay Mist Full-Body Paint. Background Image: WinnebagoLife.com contributor, Kathy Holcombe, summits Clouds Rest in Yosemite National Park.

Powerful, efficient,
and tastefully
appointed

The motorhome that started the Mercedes-Benz® Sprinter revolution just keeps getting better. From the powerful and economical turbo-diesel engine to the elegantly appointed interior, the Winnebago® View® is the ultimate in efficient, luxurious RV travel for couples and families. The View's four slideout-equipped

floorplans offer a variety of sleeping and living-space choices. All feature swivel cab seats for added seating flexibility in the lounge, a powered patio awning, and an available cabover bunk for added sleeping capacity. For those seeking the ultimate Sprinter-based Class C motorhome, the View has never looked better.



This brochure features the View 24D floorplan

View | Lounge

In each of the View's four floorplans, the surprisingly expansive living area is bolstered by a slideout on the driver's side. Dining options include a U-shaped dinette in the 24J, standard dinette in the 24D and 24G, TrueComfort+ Sofa with a table (24G, 24V), optional L-shaped sectional dinette with a table (24V) and dual recliners with a table (24V). Every floorplan includes swivel cab seats, plus a moveable pedestal table (NA 24J) for additional seating options when entertaining.





View | Galley

Cooking is a pleasure in the View's complete and versatile galley, which includes a two-burner range and touch-control microwave/convection oven. The new compressor-driven double door refrigerator keeps things cool without depleting your propane supply, while the double sink makes cleanup a breeze. The standard cold-water filtration system provides clean, fresh water for drinking and cooking. For those who want a bit more in the kitchen, the View includes a frosted galley backsplash with accent lighting as well as covers for the stainless steel double sink.



View | Bedroom / Bathroom

Sleeping options abound in the View's four floorplans. The 24G's rear slideout provides enough room for a walkaround queen bed, while the Flex Bed System in the 24V easily converts from two twin beds to a single king bed. The 24D features an innovative walkaround queen Murphy+ Bed that folds out of the way when not in use. The cabover bunk provides even more sleeping capacity. Every View also includes a private bath with separate shower, flexible showerhead, and a self-cleaning, retractable shower screen.



Dash



Driving the View is comfortable as well as easy, thanks to fully adjustable seats that feature lumbar, recline, swivel, and slide functions. Power windows and power mirrors with defrost and integrated turn signals are also standard. The Radio/Rearview Monitor System with an optional 9" touch screen with Rand McNally RV GPS puts information and entertainment at your fingertips, while pleated windshield blinds help transform the View into your own private retreat in camp.

Mirror with Turn Signal



Cab Seats Reclined



Powered Patio Awning

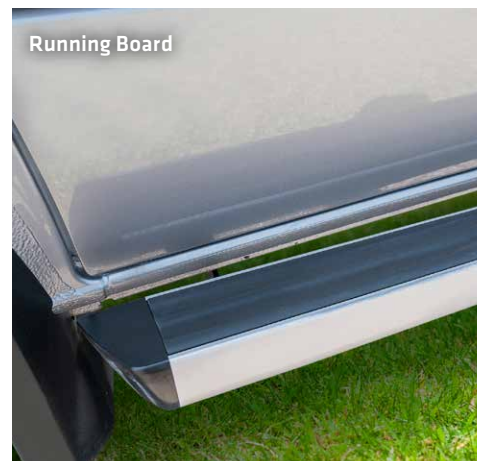


Outside, exterior speakers and a powered patio awning with LED lights enhance your comfort in camp, while two 100-watt solar panels and the standard 3,600-watt Cummins Onan® MicroQuiet™ LP generator (or available 3,200-watt Cummins Onan Diesel generator) keep the juice flowing when you're off the grid. And to truly make your View your own, choose a deluxe graphics package or one of four striking new exterior full-body paint designs.

Available Alcoa Forged Aluminum Wheels

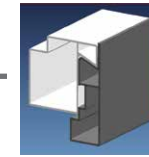


Running Board



Exterior Service Center





Interlocking Joints Specially engineered interlocking joints connect the floor, sidewalls, and roof where competitors often rely on simple screws to bear the weight.



Laser-Cut Tubing Precision laser cutters create precise joints in structural steel that are stronger and require less welding.

Fiberglass Roof The one-piece fiberglass roof is backed by a 10-year limited parts-and-labor roof skin warranty.

Thermo-Panel® Sidewalls By layering fiberglass and high-density block foam insulation with welded aluminum support structures, we create some of the industry's strongest, most durable, and lightweight sidewalls.

Embedded Steel Metal substructures embedded into the sidewall provide solid attachment points to keep cabinets and appliances mounted securely in place.

E-coating An electrodeposition coating helps protect critical steel components.

Solid Framework Structural extruded aluminum creates an extremely strong and solid frame.

**SUPER
STRUCTURE**

BUILT TO LAST

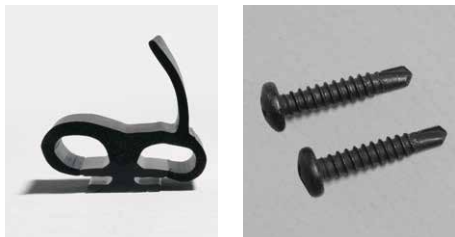
From our smallest Class C coach to our largest diesel-pusher, coaches are built to Winnebago's legendary SuperStructure® construction design. It's a process developed and refined over more than 60 years of building some of the strongest, most durable coaches in the industry.

TESTING Before rolling out of our factories, every coach undergoes an extensive 113-point inspection. Each coach also passes a high-pressure water test that simulates rain at a rate of 50-inches per hour to check for leaks. During the design process, our computer simulations, physical testing center, and rigorous test track ensure each model is built to last.

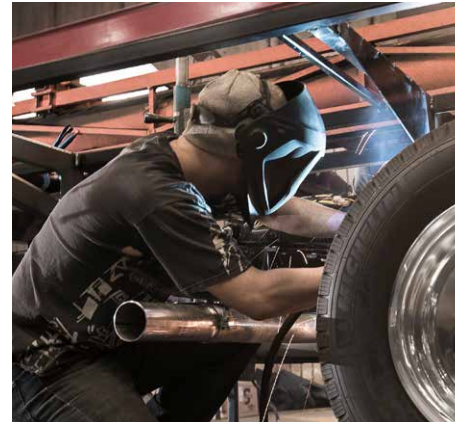


Visit BetterBuiltRVs.com to gain real insight into what goes into a Winnebago motorhome.

DETAILS At Winnebago, we treat the features you can't see with the same care as the ones you can. Look in the access panels of some of our competitors' coaches and you'll see loose insulation and wires haphazardly strewn about. Winnebago maintains a clean fit and finish throughout so your coach will last for the long haul.



BUILT IN-HOUSE We process and finish key aluminum parts. We rotocast our own plastic components. In fact, we manufacture most of our own parts so they are designed to fit the space, rather than fitting the space to an awkward off-the-shelf component size.



**SUPER
STRUCTURE**
BUILT TO LAST

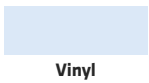
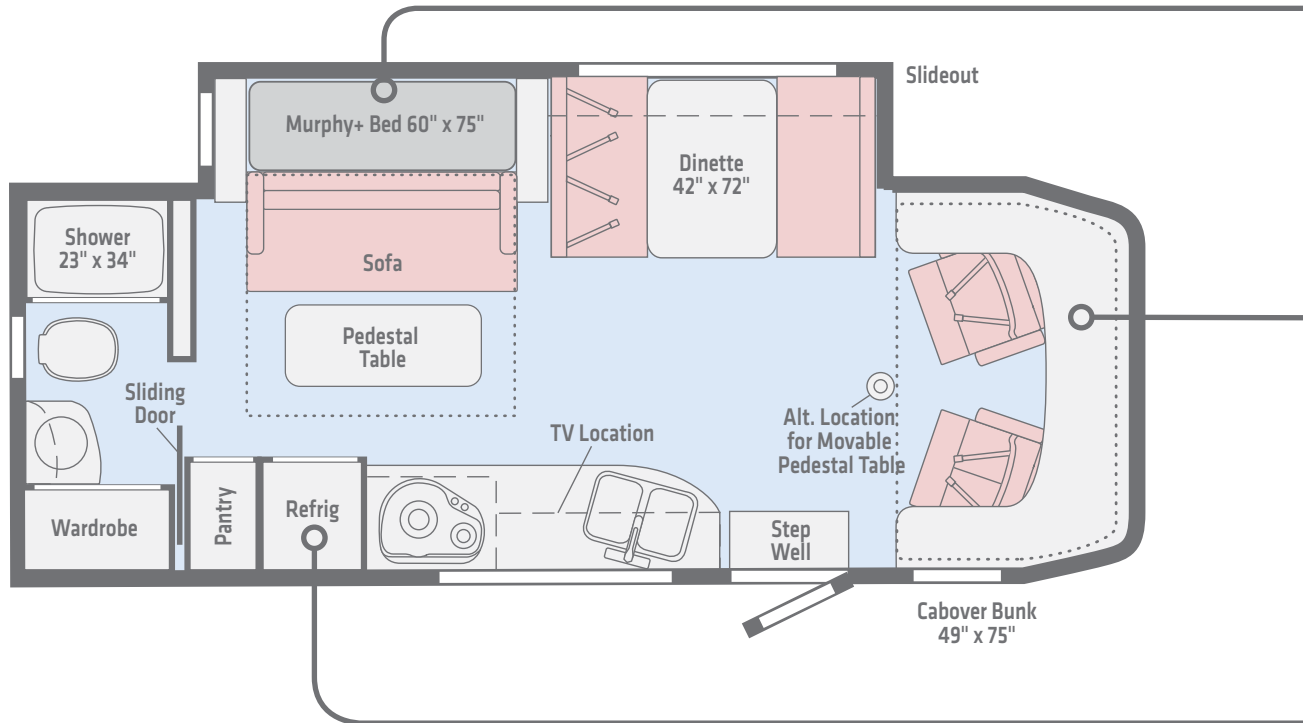
TAKE A TOUR We're proud of our processes, state-of-the-art facilities, and the people who make Winnebago number one. We invite you to visit our complex in Forest City, Iowa, for a firsthand look at the dedication and technology behind every motorhome we build.



Call (641) 585-6936 or (800) 643-4892 or visit us online at WinnebagoInd.com/company/visit for more information.

NEW 24D

The slideout provides added room to the Murphy+ Bed, while the dinette quickly converts to a comfortable bed for added sleeping capacity.

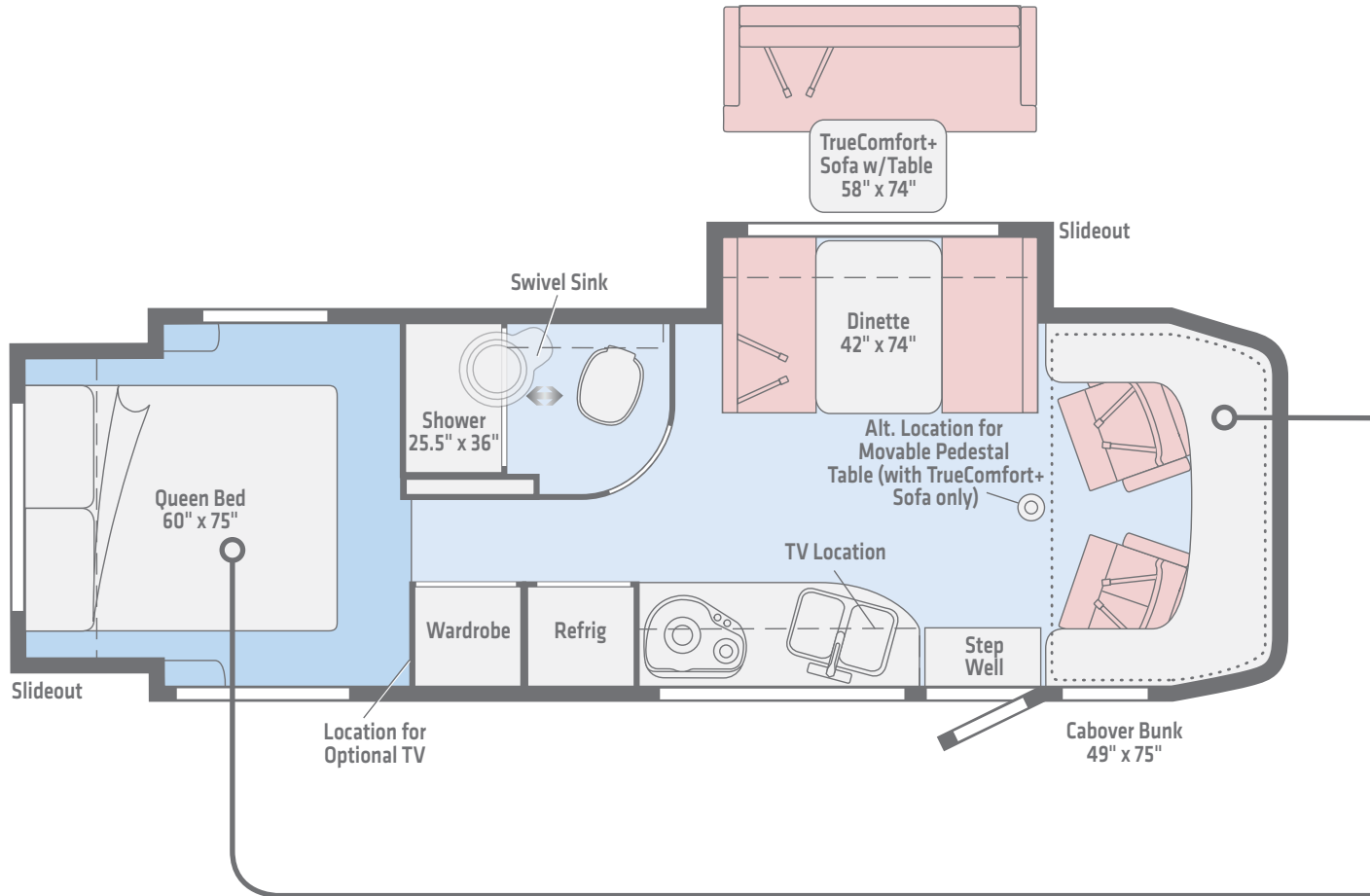


Length 25'8"
 Ext. Storage (cu. ft.) 39
 Seating 4

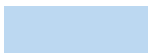
Dimensions shown are for sleeping and shower space only and may vary due to styling differences. Dashed lines denote overhead storage areas. Floorplans and specifications are also available online at WinnebagoInd.com.

24G

Dual slideouts provide added room to the main living area and the rear bedroom, which also features a walkaround queen bed.



Primera



Carpet



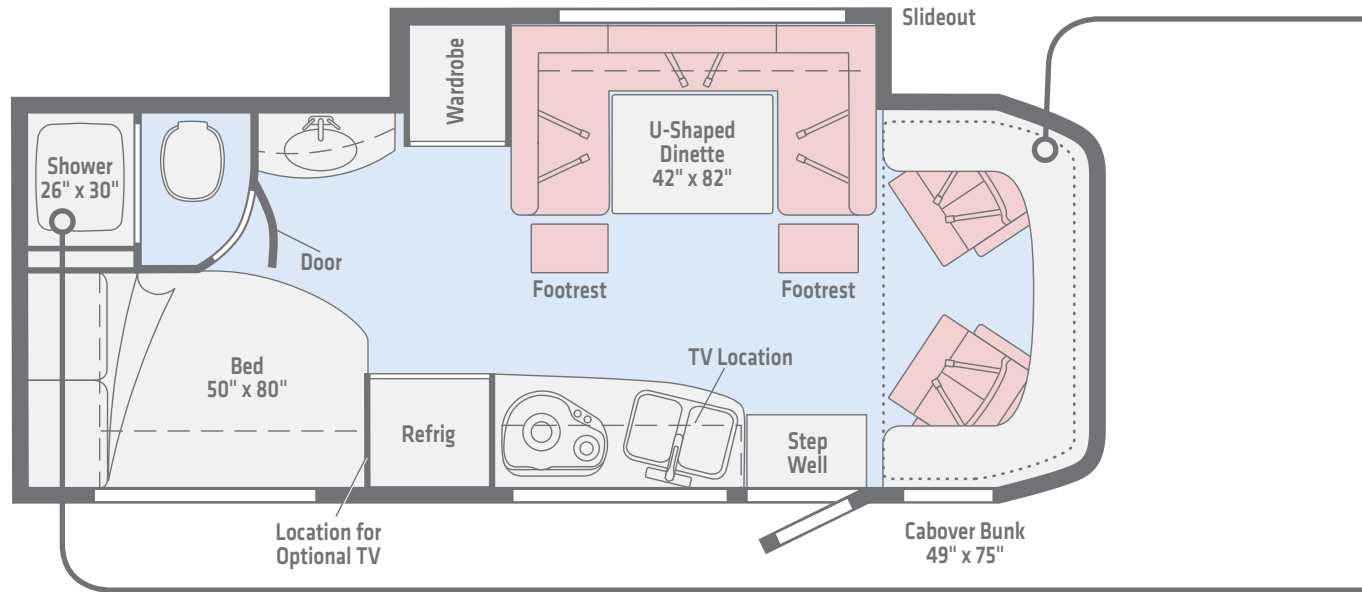
Vinyl

Length 25'8"
Ext. Storage (cu. ft.) 53
Seating 3

Dimensions shown are for sleeping and shower space only and may vary due to styling differences. Dashed lines denote overhead storage areas. Floorplans and specifications are also available online at WinnebagoInd.com.

24J

The U-shaped dinette is perfect for dining, games, or taking in a movie on the HDTV.

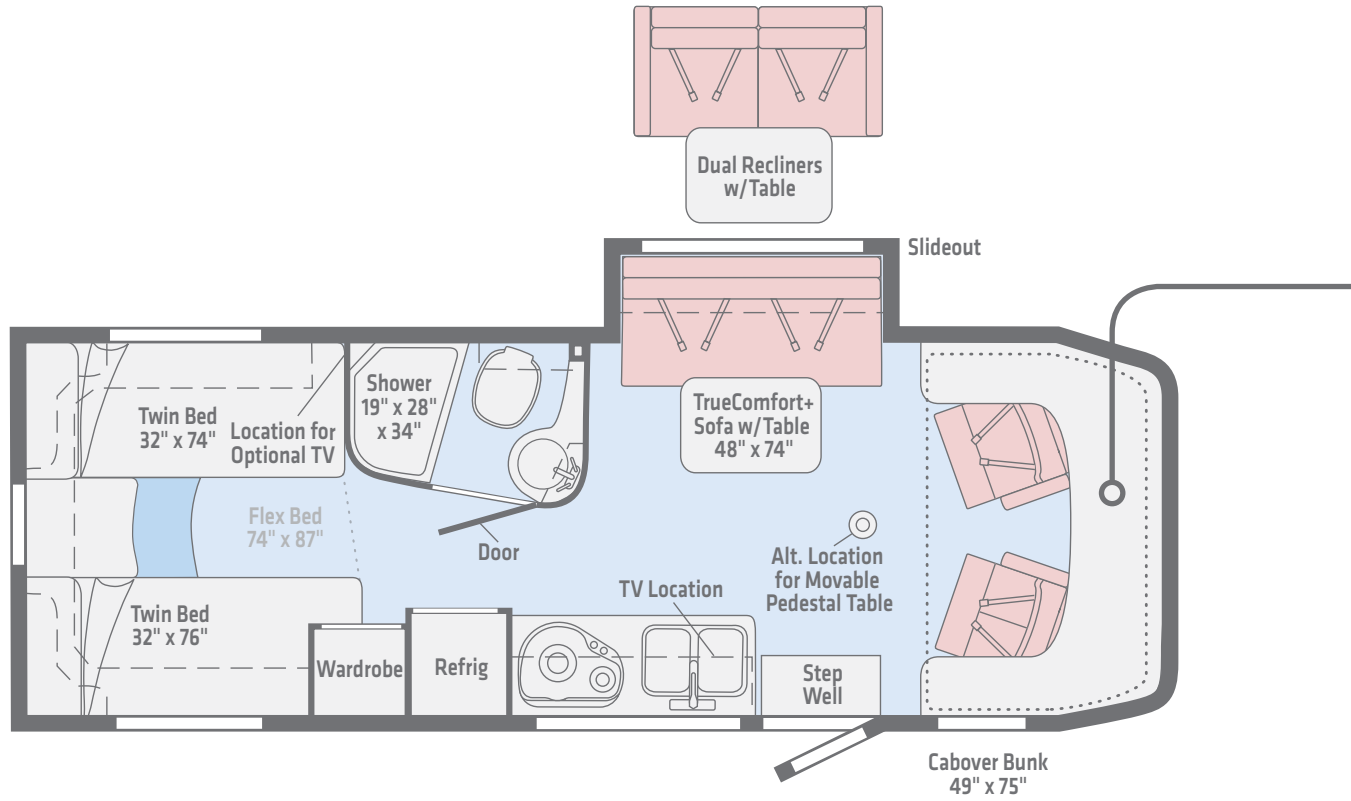


Length 25'8"
Ext. Storage (cu. ft.) 48
Seating 5

Dimensions shown are for sleeping and shower space only and may vary due to styling differences. Dashed lines denote overhead storage areas. Floorplans and specifications are also available online at WinnebagoInd.com.

24V

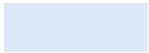
The Flex Bed System quickly converts from two twins to a king bed, while your choice of the TrueComfort+ Sofa with table, or dual recliners with table lets you truly make this View your own.



Primera



Carpet



Vinyl

Length 25'8"
Ext. Storage (cu. ft.) 43
Seating 4

Dimensions shown are for sleeping and shower space only and may vary due to styling differences. Dashed lines denote overhead storage areas. Floorplans and specifications are also available online at WinnebagoInd.com.

View | Exterior Graphics

Choose from standard deluxe graphics or upgrade to available full-body paint.



Carbon Red
DELUXE GRAPHICS



Cool Gray
DELUXE GRAPHICS

View | Exterior Graphics

Choose from standard deluxe graphics or upgrade to available full-body paint.



Bay Mist
FULL-BODY PAINT



Dark Spiral Gray
FULL-BODY PAINT



Mineral
FULL-BODY PAINT



Sandstone
FULL-BODY PAINT

Choose between two collections and two wood finishes.

Summit



Primera by Ultrafabrics



Feature Fabric



Vinyl Flooring



Bed Cover



Laminate Countertop

Woods



Aosta Cherry/Canvas



High-Gloss
Marbella Cherry/Canvas*

**High-gloss finish in select areas*

Winnebago® reserves the right to change décor materials and specifications without notice or obligation.

Choose between two collections and two wood finishes.

Zinc



Primera by Ultrafabrics



Feature Fabric



Vinyl Flooring



Bed Cover



Laminate Countertop

Woods



Aosta Cherry/Canvas



High-Gloss
Marbella Cherry/Canvas*

*High-gloss finish in select areas

Winnebago® reserves the right to change décor materials and specifications without notice or obligation.

The Holcombes

Peter, Kathy, and Abby have been full-time RVing since 2014. Using photos and videos shot by Peter, a professional photographer, the family has documented their many adventures around the continent including hiking, paddling, climbing, canyoneering, fishing, and more. All from the comfort of their Winnebago.

You can follow their journey at WinnebagoLife.com. You'll also find hundreds of other great stories from GoLife's outstanding contributors, along with how-to articles, gear reviews, RVing tips, and much more.



To learn more about the Holcombes' adventures, visit:



WinnebagoLife.com/about



Weights & Measures	24D	24G	24J	24V
Length	25'8"	25'8"	25'8"	25'8"
Exterior Height ¹	11'1"	11'1"	11'1"	11'1"
Exterior Width	7'6"	7'6"	7'6"	7'6"
Exterior Storage ² (cu. ft.)	39	53	48	43
Awning Length	16'	16'	16'	16'
Interior Height	6'8"	6'8"	6'8"	6'8"
Interior Width	7'3"	7'3"	7'3"	7'3"
Freshwater Tank Capacity ³ (gal.)	30	31	32	31
Water Heater Capacity (gal.)	Continuous	Continuous	6	6
Optional Water Heater Capacity (gal.)	N/A	N/A	Continuous	Continuous
Holding Tank Capacity - Black/Gray ³ (gal.)	40/34	36/40	34/40	36/36
LP Capacity ⁴ (gal.)	13	13	13	13
Fuel Capacity (gal.)	26.4	26.4	26.4	26.4
GCWR ⁵ (lbs.)	15,250	15,250	15,250	15,250
GVWR (lbs.)	11,030	11,030	11,030	11,030
GAWR - Front (lbs.)	4,410	4,410	4,410	4,410
GAWR - Rear (lbs.)	7,720	7,720	7,720	7,720
Wheelbase	170"	170"	170"	170"
Seating Capacity	4	3	5	4

Mercedes-Benz® Sprinter Chassis

3.0L 6-cylinder, 188-hp, turbo-diesel engine, 5-speed automatic tip-shift transmission, 220-amp. alternator

Adaptive ESP® technology

Hydraulic brakes w/ABS

Trailer Hitch⁵ 5,000-lb. drawbar/500-lb. maximum vertical tongue weight w/7-pin connector

Stainless steel wheel liners (NA 24G)

Alcoa forged aluminum wheels (24G)

OPTIONAL EQUIPMENT

Stylized chrome wheels (NA 24G)

Alcoa forged aluminum wheels

2-point electric stabilizing system (Requires Alcoa forged aluminum wheels 24G, 24J, 24V)

Cab Conveniences

Radio/Rearview Monitor System DVD receiver with 6.2" LCD color touch screen, handheld remote, iPod®/MP3 input, rear color camera, Bluetooth® SiriusXM® ready, Spotify®, AppRadio One™

Cab seats armrest, adjustable lumbar support, headrest, recline, swivel and slide

Airbags driver and passenger

3-point seat belts

Power door locks w/remote

Power windows

Power mirrors w/defrost and turn signals

Cruise control

Chassis/house battery radio power switch

Power steering w/tilt wheel

Sunvisors

12-volt powerpoints

Pleated windshield blinds

Dash appliqué package

OPTIONAL EQUIPMENT

Large Screen Infotainment Center w/Rand McNally RV GPS 9" touch screen color monitor w/split screen function, Rand McNally RV GPS safe & easy routing, amenities & tools, trips & content, turn-by-turn voice guidance, AM/FM radio, handheld remote, SiriusXM™ (includes 90-day trial subscription), iPod/iPhone® audio integration, Bluetooth®, color rearview camera, USB connection

2 cab seat lounge cushions

Sliding, pleated windshield blinds

Mobileye® Collision Avoidance System

JBL premium audio tuned 180-watt DSP amplifier with 5 speakers including subwoofer (24D Requires Alcoa forged aluminum wheels)

Interior

Stereo System AM/FM, alarm clock, CD/DVD player, input jack, Bluetooth, 2 speakers and subwoofer

28" HDTV (NA 24D)

32" HDTV (24D)



LED lights

Satellite system ready

Systems monitor panel

Amplified digital HDTV antenna

Roof vent w/electric lift and ventilator fan, rain cover, remote control (NA w/available powered skylight)

Mini blinds (galley)

MCD solar/blackout roller shades

Tinted coach windows

Soft vinyl ceiling

Vinyl flooring throughout (24G front to bedroom)

Assist bar

USB charger

OPTIONAL EQUIPMENT

Powered skylight/roof vent w/sliding screen and pleated shade (24D requires Alcoa forged aluminum wheels)

Dual-pane acrylic windows

Galley

- Laminate countertops
- Microwave/convection oven w/touch control
- 2-burner range top w/glass cover
- Double-door compressor refrigerator/freezer
- Cold water filtration system
- Water-pump switch w/light
- Pantry (24D)
- Double sink



- Frosted galley backsplash w/accent lighting
- Double sinks w/2 sink covers

Bath

- Shower 23"x34" (24D)
- Shower 25.5"x36" (24G)
- Shower 26"x30" (24J)
- Shower 19"x28"x34" (24V)
- Retractable, self-cleaning shower screen
- Shower light w/wall switch
- Flexible showerhead
- Shower skylight
- Porcelain toilet w/foot pedal and sprayer (24J, 24V)
- Toilet w/foot pedal (24D)
- Porcelain toilet w/electric flush (24G)
- Powered roof vent w/rain cover
- Towel ring(s)
- Towel bar(s) (NA 24D)
- Tissue holder
- Robe hook(s) (24D, 24J)
- Medicine cabinet

Bedroom

- Corner bed w/headboard, foam mattress, mattress cover, and access to storage below (24J)
- Queen bed w/memory foam mattress and mattress cover (24G)
- Flex Bed System twin beds/king bed w/foam mattresses and access to storage below (24V)
- Murphy+ Bed queen mattress, Euro suspension system, gel topper (24D)
- MCD blackout roller shades
- Room divider curtain (NA 24G)
- OPTIONAL EQUIPMENT
- 24" HDTV (NA 24D)
- FROLI® deluxe sleep system (24J, 24V)

Exterior

- Automatic entrance door step(s)
- LED porch light w/interior switch
- Stepwell light w/interior switch
- Front and rear mud flaps
- Premium high-gloss skin
- Powered patio awning w/LED lights (full-body paint option includes metal wrap)
- Lighted storage compartments
- Exterior speakers
- Ladder (NA 24G)

OPTIONAL EQUIPMENT

- Bike rack (24D requires Alcoa forged aluminum wheels)

Heating & Cooling

- 15,000 BTU air conditioner
- 20,000 BTU low-profile furnace
- OPTIONAL EQUIPMENT
- 15,000 BTU air conditioner w/heat pump

Electrical System

- Service Center light, cable TV input, 30-amp. power cord, portable satellite dish hookup, QuickPort® service connection hatch
- Auxiliary start circuit
- Exterior AC duplex
- Exterior antenna jack
- Battery disconnect system (coach)
- Automatic dual-battery charge control
- AC/DC load center, 45-amp. converter/charger
- 2 deep-cycle, Group 24 RV batteries
- 3,600-watt Cummins Onan® MicroQuiet™ LP generator
- 1,000-watt pure sine wave DC/AC inverter
- (2) 100-watt solar panel/battery charger w/controller, junction box, and plug for additional portable solar panel

OPTIONAL EQUIPMENT

- 3,200-watt Cummins Onan® Diesel generator

Plumbing System

- Service Center color-coded labels, pressurized city water hookup/tank diverter valve, drainage valves, exterior wash station w/lighted pump switch
- 10' sewer hose
- TrueLevel™ holding tank monitoring system
- 6-gal. 110-volt/LP water heater w/Energy Management System (NA 24G, 24D)
- Tankless water heater (24D, 24G)
- Permanent-mount LP Tank w/remote fill w/power switches
- Winterization Package water heater bypass valve and siphon tube
- On-demand water pump
- Lockable water tank fill
- Sewage pump macerator (24V)
- Holding tank flushing system

OPTIONAL EQUIPMENT

- Heated drainage system
- Tankless water heater (24J, 24V)

Safety

- LP, smoke, and carbon monoxide detectors
- 10 BC fire extinguisher
- Ground fault interrupter
- Child seat tether anchor (NA 24V)
- High-mount brake lamps
- Daytime running lamps

Warranty⁶

- 12-month/15,000-mile basic limited warranty⁷
- 36-month/36,000-mile limited warranty on structure⁷
- 10-year limited parts-and-labor warranty on roof skin⁷

FOOTNOTES

- The height of each model is measured to the top of the tallest standard feature and is based on the curb weight of a typically equipped unit. The actual height of your vehicle may vary by several inches depending on chassis or equipment variations. Please contact your dealer for further information.
- The load capacity of your motorhome is designated by weight, not by volume, so you cannot necessarily use all available space when loading your motorhome.
- Capacities are based on measurements prior to tank installation. Slight capacity variations can result due to installation applications.
- Capacities shown are tank manufacture's listed water capacity (W.C.). Actual filled LP capacity is 80% of listing due to overfilling prevention device on tank.
- Actual towing capacity is dependent on your particular loading and towing circumstances which includes the GVWR, GAWR, and GCWR, as well as adequate trailer brakes. Please refer to the Operator's Manual of your vehicle for further towing information.
- See separate chassis warranty.
- See your dealer for complete warranty information.

NA Not Available

Not all items available in combination. See dealer for details.

Winnebago's® continuing program of product improvement makes specifications, equipment, model availability, and prices subject to change without notice. Published content reflects the most current product information at time of printing. Please consult your dealer for individual vehicle features and specifications.