



WHEN YOU KNOW THE DIFFERENCE™

The Extra Mile



Bay Star

Canyon Star

motorhomes
2011



Bay Star

Taking you places you've never been

The 2011 Bay Star expands the boundaries of what a front-engine motorhome can be. It's made not just for beauty, but also performance and livability.

Take a look: We make our own cabinetry, drawing on the heritage of a region famous for quality home craftsmanship. The galley is designed for optimum storage and convenience, with features like a pullout pantry and top-grade appliances keeping everything you need right where you need it. Bay Star's kitchen flooring is a durable vinyl that's easy to clean and maintain, so it will stay beautiful through years of high-traffic use. And while the living area's soft Ultralux upholstery has the look and feel of fine leather, it's washable with soap and water, so scuffs and stains aren't a worry.



BSCA 2902 shown with Raffia décor and Empire Maple hardwood cabinetry. (Not all fabrics shown are available with décor options offered.)





Your Hideaway

EXTRA MILE Differences

The Total Comfort™ Dual In-Roof Ducting System: Designed by Newmar in conjunction with cooling engineers. With multiple strategically placed vents, the system provides true central air conditioning for unparalleled cooling efficiency, balance and whisper-quiet operation.



Time to retire to your quiet place? Bay Star has gone the extra mile to make it the perfect retreat. Nestle into the queen-size bed with its smooth-top mattress. Click on the 32-inch LCD television to tune into your favorite show or the big game. Adjust the day/night shades for the level of light and privacy you prefer. Enjoy your down time...this is the place where it's all about you.





Everything including the kitchen sink

When you look at Bay Star's features, like a dry bar or a home theater entertainment system, you can see the extra planning Newmar puts into your life on the road — from extra-efficient environment control systems and a full-body deluxe paint finish, to finishing touches like lighted wardrobes and exterior TV jacks. We've carefully integrated hundreds of systems and features so you can just kick back and enjoy the simple life.

EXTRA MILE Differences

Newmar Slideouts Go the Distance

Newmar introduced the flat-floor slideout and is a pioneer in innovative, reliable slideout operation. We developed an improved wedge roof design that forms a tighter seal when the room is extended. A specially developed double-bulb seal with superior memory keeps out moisture, dust and insects and sweeps off debris as the room is retracted.



Beauty is skin-deep.

The rest is a matter of quality. Our design team chooses décor combinations – fabrics, woods, counters and hardware – not just for aesthetics, but for easy care and durability, so you'll enjoy your Bay Star years from now as much as you did when it was brand new.

Optional Vinyl Flooring



Baltic Beech



Empire Maple



Optional Vinyl Flooring



EXTRA MILE Differences

Aluminum-Frame Wall and Roof Construction

Welded-aluminum walls and roof structure – studs located 16-inches on-center for greater strength and durability. While extra metal, extra material and extra welds cost more, they provide a superior wall structure for added stability and security to withstand the rigors of the road.



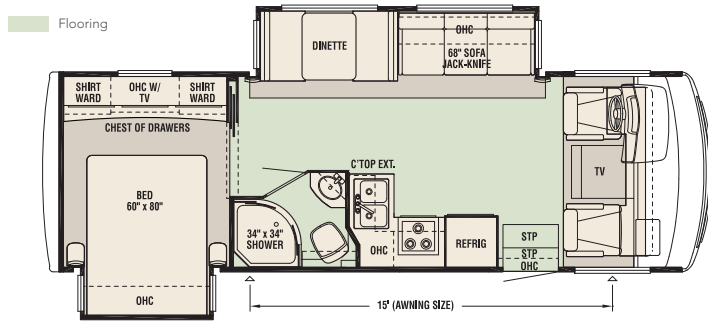
Chromium



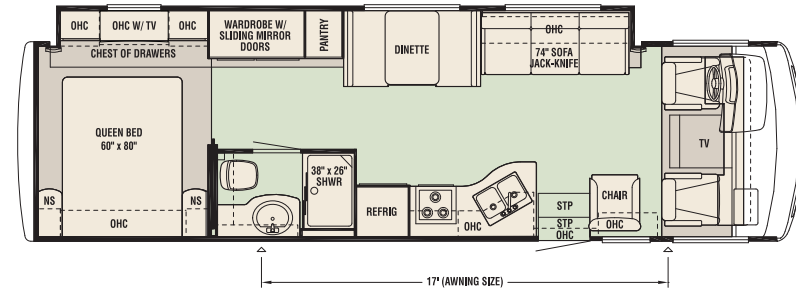
Raffia

Uniform Specifications

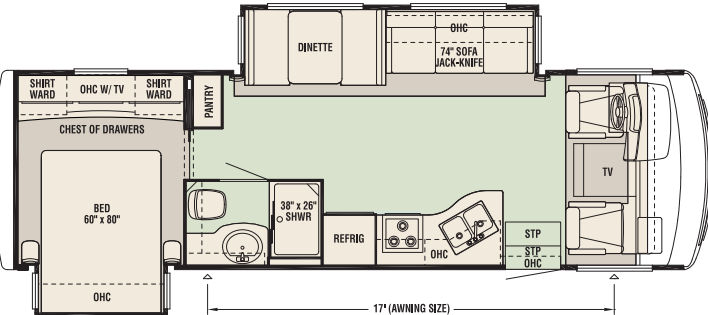
Width	101.5"
Interior Width	95.5"
Interior Height	80"
App. Height	12' 4"
Water (gal.)	75
Grey (gal.)	60
Sewage Cap. (gal.)	40
Fuel Cap. (gal.)	80
Propane (gal.)	25
Water Heater (gal.)	6
Engine HP	362



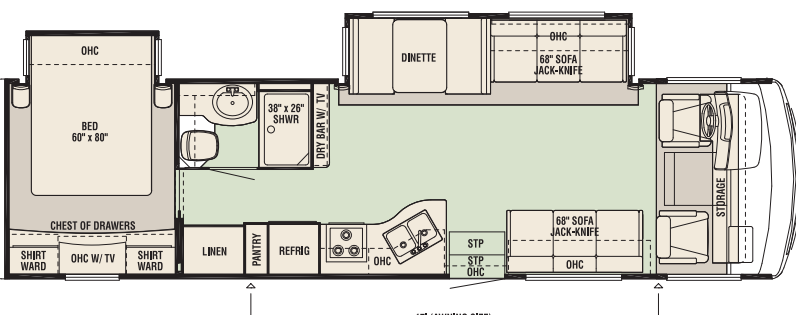
BSCA 2702					
App. Length	27' 10"	Front GAWR	7,000	APP. UVW	15,482
Wheel Base	172	Rear GAWR	12,000	APP. NCC	2,518
Axle Ratio	4.88	GVWR	18,000		
Furnace (Btu)	40,000	GCWR	26,000		



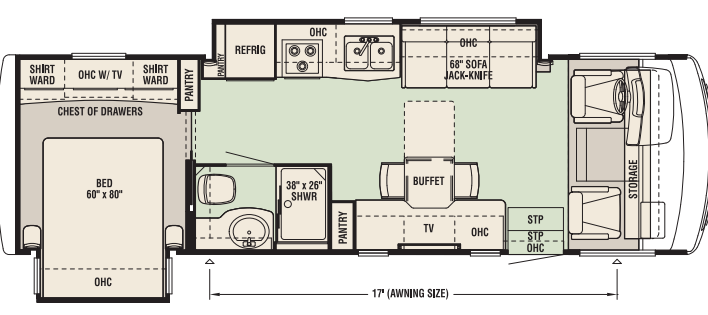
BSCA 3205					
App. Length	32' 11"	Front GAWR	7,500	APP. UVW	17,188
Wheel Base	208	Rear GAWR	13,500	APP. NCC	3,312
Axle Ratio	5.38	GVWR	20,500		
Furnace (Btu)	40,000	GCWR	26,000		



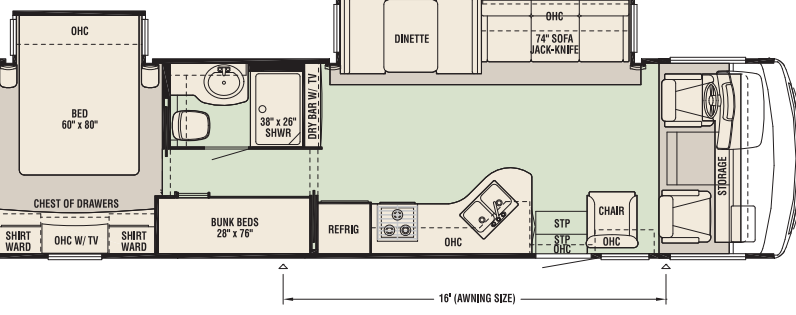
BSCA 2901					
App. Length	29' 11"	Front GAWR	7,000	APP. UVW	16,030
Wheel Base	190	Rear GAWR	12,000	APP. NCC	1,970
Axle Ratio	4.88	GVWR	18,000		
Furnace (Btu)	40,000	GCWR	26,000		



BSCA 3302					
App. Length	33' 10"	Front GAWR	7,500	APP. UVW	16,895
Wheel Base	208	Rear GAWR	13,500	APP. NCC	3,605
Axle Ratio	5.38	GVWR	20,500		
Furnace (Btu)	40,000	GCWR	26,000		



BSCA 2902					
App. Length	29' 11"	Front GAWR	7,500	APP. UVW	16,090
Wheel Base	190	Rear GAWR	13,500	APP. NCC	4,410
Axle Ratio	5.38	GVWR	20,500		
Furnace (Btu)	40,000	GCWR	26,000		



BSCA 3405					
App. Length	34' 8"	Front GAWR	7,500	APP. UVW	17,243
Wheel Base	216	Rear GAWR	13,500	APP. NCC	3,257
Axle Ratio	5.38	GVWR	20,500		
Furnace (Btu)	40,000	GCWR	26,000		

STANDARD FEATURES

Chassis Features

- Ford® F-53 18,000 lb. Chassis (2702 & 2901 floorplans)
- Ford® F-53 20,500 lb. Chassis (2902, 31'-33' floorplans)
- Electronic Leveling Jacks with Automatic Control
- Cruise Control
- Tilt Steering Wheel
- Stainless Steel Wheel Simulators

Air Conditioning & Heating

- 13.5M Brisk Air® Central Air Conditioner
- Dash Heater and Air Conditioner
- Propane Leak Detector

Appliances & Accessories

- Three-Burner Range with Metal Oven Door and Piezo Ignition
- Bi-Fold Range Cover
- Norcold® 8 cu. ft. Refrigerator with Black Front Panel
- Spacesaver Microwave Oven
- 6 Gal. Gas/Electric Water Heater with Electronic Ignition
- Sony® 32" or 40" LCD TV in Living Area*
- Sony® DVD Players in Living Area and Bedroom
- Sony® 32" LCD TV in Bedroom
- AM/FM Dash Radio with MP3 Adapter and CD Player
- Black & White Rearview Monitor System with Audio
- TV Antenna with Power Booster and Two Interior Jacks
- Satellite Prep
- Phone Jack in Living Area
- Cable TV Connection with RG-6 Coax
- 10 Bc Fire Extinguisher, Smoke Detector and Carbon Monoxide Detector

Cabinets & Furniture

- Baltic Beech Raised-Panel Overhead Cabinet Doors
- Booth Dinette with Forward-Facing Seat Belts
- Laminate Kitchen Countertop with Bullnose Edge
- Stainless Steel Kitchen Sink with Sink Covers
- Laminate Countertop with Bullnose Edge and ABS Bowl
- Residential-Style Full-Extension Ball Bearing Drawer Guides
- Kitchen Countertop Extension*
- Pullout Pantry*
- Flexsteel® Ultralux Leather Furniture
- Lifts on Bed Top
- Smooth-Top Mattress with Quilted Bedspread and Accent Pillow
- Pullout Step-Stool with Storage in Bathroom Cabinet*

Electrical Features

- 4.0 kW Cummins Onan® Generator with Remote Switch and Automatic Changeover
- 30 Amp Electrical Service with Flexible Cord
- Two 12V House Batteries
- Battery Disconnect Switch
- 110V Exterior Receptacle
- 12V Auxiliary Receptacle in Dash
- 5 Watt Solar Panel
- 45 Amp Converter
- Daytime Headlight System
- Emergency Start Switch
- Fluorescent Ceiling Lights Throughout
- Lighted Wardrobe
- Manually Operated Hold-to-Run Slideout Switch
- Exterior TV Jack

Exterior Features

- Full-Paint Masterpiece Finish™ with Front Protective Film
- One-Piece Windshield
- Convex Exterior Mirrors with Defrost
- Entrance Door with Automatic Double Step
- Lighted Exterior Storage Compartments with Cargo Liner
- Rear Hitch for Towing Car with Two Extra 14-Gauge Wires
- Assist Handle at Entrance Door
- Undercoating
- Mud Flaps

Interior Features

- Padded Vinyl Ceiling
- Day/Night Pleated Window Shades and Valances
- Mini Blinds in Bathroom
- Vinyl Flooring in Kitchen, Living Area and Bathroom
- Deluxe Carpeting with High-Density Padding in Living Area and Bedroom
- Interior Assist Handle at Main Entrance Door
- Shoe Storage in Entrance Step Compartment
- Wraparound Windshield Privacy Shade

Plumbing & Bath Features

- Demand Water System with SHURflo® Pump
- Sewage Holding Tank Rinse
- Water Heater Bypass
- Theford™ Aqua Magic Toilet with Spray Attachment
- Towel Bars and Toilet Paper Holder
- ABS Shower with Glass Enclosure
- Exterior Shower
- Monoplex Water Pump Switch System
- Monitor Panel

Construction Features

- BriteTEK™ Roof with 9mm Decking
- Gelcoated Fiberglass Exterior Sides
- Gelcoated Fiberglass End Caps
- Aluminum-Frame Sidewalls and Roof on 16" Centers
- 5/8" Bead Foam Insulation Laminated in Sidewalls and Ceiling
- Composite R-Values:
 - Roof: R-16
 - Floor: R-11
 - Sidewalls: R-11

Windows, Awnings & Vents

- Tinted Safety Glass Windows
- Power Vent with Wall Switch in Bathroom
- Skylight in Bathroom*
- Dometic® A&E 8500 Side Awning
- Slideout Covers
- Two Dash Fans

OPTIONAL FEATURES

Option Package (32'-34' floorplans)

- Extra 13.5M Brisk Air® Central Air Conditioner
- 5.5 Cummins Onan® Marquis Generator
- 50 Amp Electrical Service with Energy Management System

Air Conditioning & Heating

- 15.0M Penguin™ Heat Pump Central Air Conditioner
- Auxiliary Heater in Bedroom

Appliances & Accessories

- Sony® Surround Sound System with AM/FM Radio and Subwoofer
- SIRIUS® Satellite Radio Capability (does not include monthly subscription)
- Automatic Satellite Dish (does not include receiver)
- CB Antenna
- High-Definition Wiring
- Sideview Cameras

Cabinets & Furniture

- Empire Maple Cabinetry
- Hidden-Leaf Dinette Table with Four Chairs (two fixed, two folding)*
- Wardrobe in Place of Bunk Beds*

Electrical Features

- 600 Watt Inverters for Living Area and Bedroom TVs
- Solar Prep

Exterior Features

- Convex Exterior Mirrors with Defrost and Remote Control
- Rear Ladder

Interior Features

- Vinyl Tile Flooring in Kitchen, Living Area and Bathroom

Windows, Awnings & Vents

- Double-Pane Tinted Safety Glass Windows
- Rear Window (single-pane)
- Power Vent in Kitchen
- Bunk Windows*

*check with dealership on floorplan availability

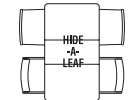
Wardrobe Option available on floorplan 3405 in lieu of Bunk Beds.



Dry Bar Option available on floorplan 2901 in lieu of Pantry.



Hide-A-Leaf Option available on floorplans 2702, 2901, 3205, 3302 & 3405 in lieu of Dinette.



Desk Hide-A-Leaf Option available on floorplans 2702, 2901, 3205, 3302 & 3405 in lieu of Dinette.





Canyon Star

Freedom to go the distance

2011 Canyon Star is a gas motorhome that delivers many of the same qualities of Newmar's flagship diesel pushers. It's a coach designed for people who spend a long time traveling a long way from home.

And you have the freedom to equip your coach to suit your needs. You can pick a floorplan great for a couple in their second youth...or a growing family's model with a bunkhouse, complete with LCD monitors and DVD players. Whatever your choice, your ideal Canyon Star is the result of generations of work at perfecting the art and science of building the finest RVs.



CSCA 3642 shown with Truffle décor,
Empire Maple hardwood cabinetry and
optional simulated plank flooring.





If you're tired of cramped bedrooms and bathrooms, you'll love the wide-open spaces of Canyon Star. We've combined room to live, work and relax with loads of storage in numerous drawers and two spacious wardrobes. And of course the bed lifts up, with the roomy space underneath nicely finished to safely enclose your delicate linens or clothing.



Newmar ingenuity: In the bathroom you'll find a pullout stepstool* to help little ones reach the sink – or help you reach the top shelf of the medicine cabinet. It even has storage space inside.

*check with dealership on floorplan availability

EXTRA MILE Differences

The Slideout Cog Wheel
Another innovation by Newmar, this design provides fuller engagement of the gears for prevention of gear slippage – a nuisance in other systems. Our slideout's superior strength, durable high-torque motor mechanism, independent operation and unique self-storing travel-lock arms are designed to provide years of convenient, smooth, dependable service.

Room to Breathe



Baltic Beech



Empire Maple



EXTRA MILE Differences

Handcrafted Cabinetry
 Created by Newmar designers and built by skilled cabinet makers, our handcrafted cabinetry with solid hardwood doors is fit for the finest homes. Cabinet frames are fitted and screwed for strength and durability to withstand many miles of road vibrations, and expert assembly means spot-on alignment for silky-smooth door and drawer operation. Luxurious finishes, quality materials and superb construction are standard here at Newmar.



Mrs. Miller's Kitchen

We consulted with the industry's leading experts on how to design our motorhome kitchens: The women in Newmar's family. The years they've spent working in the business and traveling in Newmar RVs add up to the best resource there is for designing the ideal galley.

That's why our kitchens are supremely functional, with the right kind of storage...the right arrangement of storage and appliances...exactly what you need to make cooking a joy.



EXTRA MILE Differences

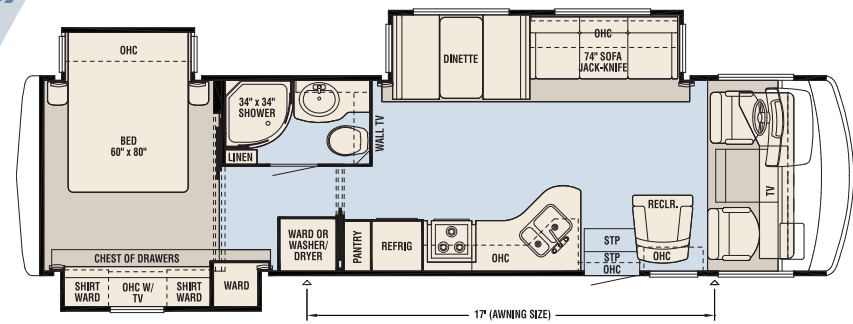
Radius Countertops
 High-quality countertops are integrated seamlessly with backsplashes and in-line sinks for beauty and easy clean-up. They are non-porous and resistant to heat and scratches. Newmar craftsman expertly fit, finish and install them.

Midnight

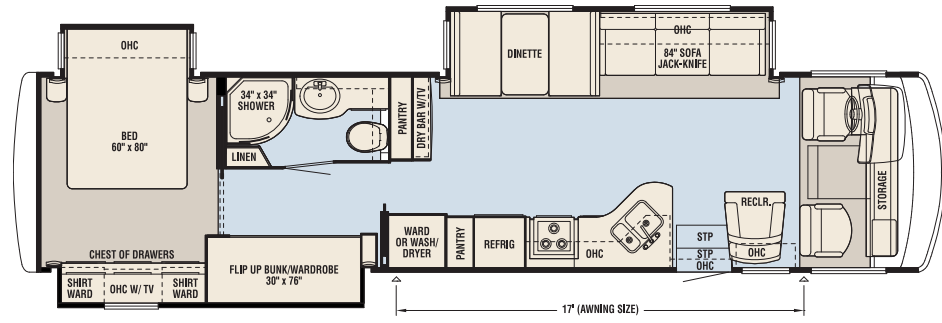


Truffle

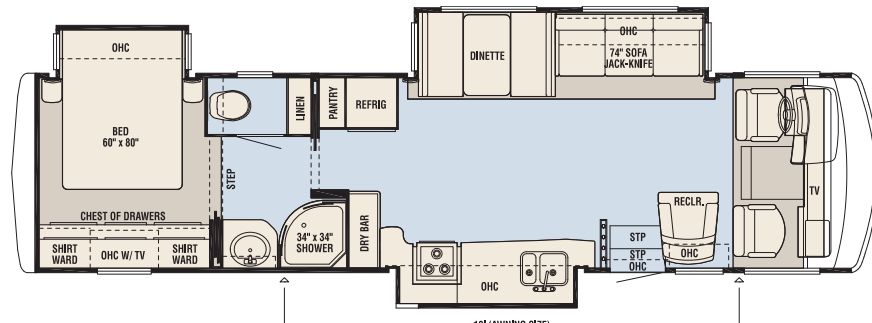




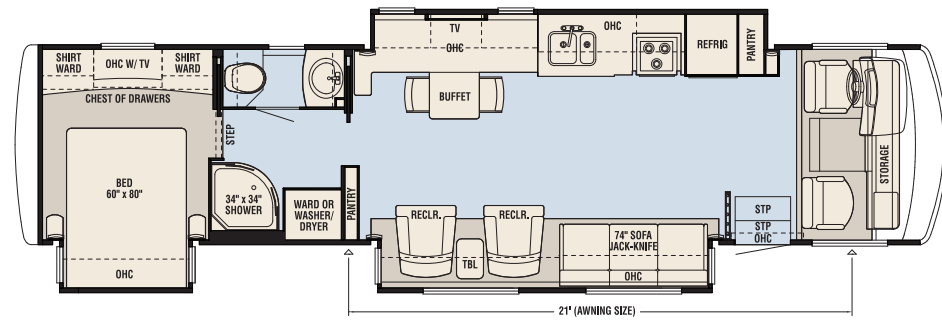
CSPA 3411		Ford® / Workhorse™ Chassis	
App. Length	34' 11"	Front GAWR	8,000
Wheel Base	216	Rear GAWR (F)15,000/(W)14,500	APP. UJVW (F)18,884/(W)19,064
Axle Ratio (F)5.38/(W)5.86	GVWR	22,000	APP. NCC (F)3,116/(W)2,936
Furnace (Btu)	40,000	GCWR	26,000



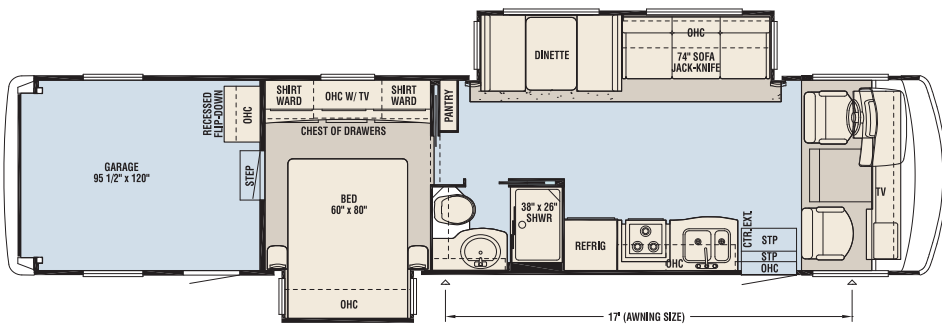
CSPA 3810			
App. Length	38' 11"	Front GAWR	9,000
Wheel Base	260	Rear GAWR	17,500
Axle Ratio	5.38	GVWR	26,000
Furnace (Btu)	40,000	GCWR	30,000



CSPA 3642		Ford® / Workhorse™ Chassis	
App. Length	36' 3"	Front GAWR	8,000
Wheel Base	234	Rear GAWR (F)15,000/(W)14,500	APP. UJVW (F)19,822/(W)19,678
Axle Ratio (F)5.38/(W)5.86	GVWR	22,000	APP. NCC (F)2,178/(W)2,322
Furnace (Btu)	40,000	GCWR	26,000



CSPA 3856			
App. Length	38' 11"	Front GAWR	9,000
Wheel Base	260	Rear GAWR	17,500
Axle Ratio	5.38	GVWR	26,000
Furnace (Btu)	50,000	GCWR	30,000



CSPA 3920			
App. Length	39' 5"	Front GAWR	9,000
Wheel Base	260	Rear GAWR	17,500
Axle Ratio	5.38	GVWR	26,000
Furnace (Btu)	40,000	GCWR	30,000

STANDARD FEATURES

Chassis Features

- Ford® F-53 22,000 lb.Chassis (34'-36' floorplans)
- Ford® F-53 26,000 lb.Chassis (38'-39' floorplans)
- Electric Leveling Jacks with Automatic Control
- Cruise Control
- Tilt Steering Wheel
- Coated Aluminum Wheels

Air Conditioning & Heating

- Two 13.5M Brisk® Central Air Conditioners
- Dash Heater and Air Conditioner
- Propane Leak Detector

Appliances & Accessories

- Three-Burner Recessed Range with Glass Oven Door & Piezo Ignition
- Polished Solid Surface Range Cover
- Norcold® 8 cu. ft. Refrigerator with Black Front Panel
- Spacesaver Microwave Oven
- 10 Gal. Gas/Electric Water Heater with Direct-Spark Ignition
- Sony® 32" or 40" LCD TV in Living Area
- Sony® 32" LCD TV in Bedroom
- AM/FM Dash Radio with MP3 Adapter and CD Player
- Sony® DVD Players in Living Area and Bedroom
- AM/FM Radio and Single-Disc CD Player with Two Exterior and Two Interior Speakers in Garage*
- Rearview Monitor System with Audio
- TV Antenna with Power Booster and Two Interior Jacks
- Satellite Prep
- Phone Jacks in Living Area
- Cable TV Connection with RG-6 Coax
- 10 Bc Fire Extinguisher, Smoke Detector and Carbon Monoxide Detector
- Fire Extinguisher in Garage*

Cabinets & Furniture

- Baltic Beech Raised-Panel Overhead Cabinet Doors
- Booth Dinette with Forward-Facing Seat Belts
- Laminate Kitchen Countertop
- Undermounted Stainless Steel Kitchen Sink with Flush Sink Covers
- Laminate Bathroom Countertop with Porcelain or Acrylic Sink*
- Residential-Style Full-Extension Ball Bearing Drawer Guides
- Kitchen Countertop Extension*
- Pullout Pantry*
- Flexsteel® Ultralux Leather Furniture
- Driver/Passenger Seats with Six-Way Power Driver Seat
- Lifts on Bed Top to Access Storage Area*
- Smooth-Top Mattress with Quilted Bedspread, Shams and Accent Pillows
- Pullout Step-Stool with Storage in Bathroom Cabinet*

Electrical Features

- 5.5 kW Cummins Onan® Marquis Generator with Remote Switch and Automatic Changeover
- 50 Amp Electrical Service with Flexible Cord
- Two 12V House Batteries
- Battery Disconnect Switch
- 110V Exterior Receptacle
- 12V Auxiliary Receptacle in Dash
- 5 Watt Solar Panel
- 55 Amp Converter
- Daytime Headlight System
- Emergency Start Switch
- Fluorescent Ceiling Lights Throughout
- Lighted Wardrobe
- Manually Operated Hold-to-Run Slideout Switch
- Exterior TV Jack
- Energy Management System
- ICC Light Flasher Switch
- Fog Lights

Exterior Features

- Full-Paint Masterpiece Finish™ with Front Protective Film
- One-Piece Windshield
- SuperStorage™ below Rear Bedroom Floor*
- Convex Exterior Mirrors with Defrost and Remote Control
- Entrance Door with Automatic Triple Step
- Entrance Door with Automatic Triple Step in Garage*
- Fueling Station in Garage*
- Lighted Exterior Storage Compartments with Cargo Liner and Interior Master Switch
- Rear Hitch for Towing Car with Two Extra 14-Gauge Wires
- Acrylic Assist Handle at Entrance Door
- Undercoating
- Mud Flaps

Interior Features

- Padded Vinyl Ceiling
- Day/Night Pleated Window Shades and Valances
- Mini Blinds in Bathroom and Garage Area
- Vinyl Tile Flooring in Kitchen, Living Area and Bathroom
- Deluxe Carpeting with High-Density Padding in Living Area and Bedroom
- Interior Assist Handle at Main Entrance Door
- Shoe Storage in Entrance Step Compartment
- Wraparound Windshield Privacy Shade
- Diamond Tread Rubber Flooring in Garage*
- Tie-Down Track in Garage*

Plumbing & Bath Features

- Demand Water System with SHURflo® Pump
- Sewage Holding Tank Rinse
- Water Heater Bypass
- Theford™ Aqua Magic Plus China Toilet with Wood Seat and Spray Attachment
- Towel Bars and Toilet Paper Holder
- ABS Shower with Glass Enclosure
- Exterior Shower
- Water Filter for Entire Unit
- Monoplex Water Pump Switch System
- Monitor Panel

Construction Features

- BriteTEK™ Roof with 9mm Decking
- Gelcoated Fiberglass Exterior Sides
- Gelcoated Fiberglass End Caps
- Aluminum-Frame Sidewalls and Roof on 16" Centers
- 5/8" Bead Foam Insulation Laminated in Sidewalls and Ceiling
- Composite R-Values:
Roof: R-16 Floor: R-11 Sidewalls: R-11

Windows, Awnings & Vents

- Double-Pane Tinted Safety Glass Windows
- Fan-Tastic® Vents in Kitchen and Bathroom
- Skylight in Bathroom*
- Dometic® A&E 9000 Side Awning
- Slideout Covers
- Two Dash Fans

*check with dealership on floorplan availability

OPTIONAL FEATURES

Chassis Features

Workhorse™ W-22 Chassis (34' - 36' floorplans, while supplies last)*

Air Conditioning & Heating

- Two 13.5M Penguin™ Heat Pump Central Air Conditioners
- 13.5M Penguin™ Air Conditioner with Heat Strip and Energy Management System in Garage*
- Auxiliary Heater in Bedroom

Appliances & Accessories

- 30" Convection Microwave Oven with Three-Burner Cooktop
- Norcold® 12 cu. ft. Four-Door Refrigerator with Icemaker*
- Whirlpool® Stainless Steel Residential Refrigerator with 2000 Watt Pure Sine Wave Inverter and Six 6V Batteries*
- Sony® Surround Sound System in Living Area
- SIRIUS® Satellite Radio Capability (does not include monthly subscription)
- 11" Flip-Down LCD TV and DVD Player with Headphones in Each Bunk*
- Sony® LCD TV at Dry Bar*
- Sony® 32" LCD TV in Front Overhead Cabinet*
- Washer/Dryer Prep
- One-Piece Washer/Dryer
- Automatic Satellite Dish (does not include receiver)
- CB Antenna
- High-Definition Wiring
- Shop Vac in Garage*
- Sony® 32" LCD TV in Garage*
- Sideview Cameras*

Cabinets & Furniture

- Empire Maple Cabinetry
- Hidden-Leaf Dinette Table with Four Chairs (two fixed, two folding)*
- Round Dinette Table with Four Chairs (two fixed, two folding)*
- Hide-A-Bed Sofa*
- Luxurious Pillowtop Mattress
- Sleep Number® Deluxe Air Mattress
- Electronic Bunk Beds with Removable Rug in Garage*

Electrical Features

- 600 Watt Inverters for Living Area and Bedroom TVs
- Solar Prep

Exterior Features

- Rear Ladder

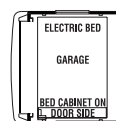
Interior Features

- Laminate Plank Flooring in Kitchen and Bathroom
- Two Wheel Chocks in Garage*

Windows, Awnings & Vents

- Dometic® A&E WeatherPro Side Awning
- Rear Window (single-pane)
- Driver's Door with Power Window
- Bunk Windows*
- Screen for Rear Cargo Door*

Electric Bed Option available on floorplan 3920.



Desk Hide-A-Leaf Option available on floorplans 3411, 3642, 3810 & 3920 in lieu of Dinette.



Dry Bar Option available on floorplan 3920 in lieu of Pantry.



Hide-A-Leaf Option available on floorplans 3411, 3642, 3810 & 3920 in lieu of Dinette.



Free Standing Dinette Option available on floorplans 3411, 3642, 3810 & 3920 in lieu of Dinette.



Carpet Flooring

Uniform Specifications

Width	101.5"
Interior Width	95.5"
Interior Height	84"
App. Height	12' 10-11"
Water (gal.)	75
Grey (gal.)	60
Sewage Cap. (gal.)	40
Fuel Cap. (gal.) (F)80/(W)75	
Propane (gal.)	25
Water Heater (gal.)	10
Engine HP (Ford)	362
Engine HP (Workhorse)	340



Ceilings: R-Value = 16

- a. BriteTEK™ Roof
- b. 9mm Wood Decking
- c. Fiberglass Batten Insulation
- d. Total Comfort™ Ducted A/C
- e. Aluminum Roof Truss
- f. Kraft Paper Vapor Barrier
- g. 5/8" Bead Foam
- h. 3/16" Plywood Ceiling Panel
- i. Padded Vinyl Overlay

Walls: R-Value = 11

- j. 16" On-Center Aluminum Framing with 3 1/2" Header
- k. 3/16" Plywood Interior Wall
- l. 5/8" Bead Foam
- m. Kraft Paper Vapor Barrier
- n. Fiberglass Batten Insulation
- o. 3/16" Plywood Exterior Wall
- p. Composite One-Piece Gelcoat Exterior Sidewall

Flooring: R-Value = 11

- q. Carpet / Tile
- r. Carpet Padding
- s. 5/8" Floor Decking
- t. Fiberglass Batten Insulation
- u. 2" x 3" Wood Framing
- v. Polyethylene Moisture Barrier
- w. Aluminum Ducting

EXTRA MILE Differences

Sikaflex® Adhesive

Used throughout Newmar construction, Sikaflex elastic adhesive is one of the strongest bonding agents on the market today. It also serves as a sealant against dust and moisture, and dampens both sound and vibration – all for extra structural integrity and additional living comfort.

Newmar was one of the pioneers of welded aluminum-frame body construction. And unlike others, we haven't abandoned it to save a few dollars. It provides optimal location of electrical plugs and switches, because wiring is run through the wall studs – not the floor and cabinets, as with laminated-wall RVs. Stud grommets protect wiring from abrasion. But most important, the frame is lightweight, strong and durable, to maintain its integrity over miles of road jolts and vibration.



Bay Star Dash



Canyon Star Dash

Smooth and steady

Newmar goes the extra mile to make sure your on-the-road experience is the best it can be — with optional side cameras for added visual safety, a comfortable and functional cockpit with all your controls within easy reach, easy access to pass-through SuperStorage basement space, and much more.

Bay Star and Canyon Star are built on Ford® Class A motorhome chassis with Workhorse™ chassis* available on some floorplans – great choices for engineering, performance, reliability and the best service. Extra heavy-duty subfloor framing and outriggers couple the coach body with the chassis to go the extra mile in ruggedness and stability on the road. And the quality full-body Masterpiece™ paint finish, worthy of top-of-the-line diesel pushers, makes your gas motorhome look like a million bucks.

Ask your dealer for a test drive so you can see and feel the difference for yourself.

*check with dealership on floorplan availability



EXTRA MILE Differences

Awning Weathershields

Attractive all-metal weathershields on brand-name patio and slideout awnings provide protection and color-coordinated great looks. Typically an additional-cost option on other gas motorhomes, all-metal awning weathershields are standard equipment on Bay Star and Canyon Star.

People who appreciate the value of family and neighbors.

The quietly energetic farming community of Nappanee, Indiana is home to the Miller family, the owners of Newmar, who are actively engaged in Newmar's operations and embrace the thought of employees, suppliers, dealers and customers as part of the Newmar "family." This family is significantly larger than just the six people it started out with in 1968, but continues to strive for faithfulness to the tenets of its founders. These include a strong sense of community, bearing the burdens of others, forgiveness and fairness, honesty and integrity, and peace with one's neighbors. When working with a company based on these principles, it shows in how they do business and how they build their products. Newmar's employees take pride in their work - so you can, too. Come and take a tour of Newmar and see for yourself.



Mahlon Miller, Newmar Corp. owner; Matthew Miller, Newmar Corp. president.

Your Official Newmar Dealer:



WHEN YOU KNOW THE DIFFERENCE™

NEWMAR CORPORATION
355 N DELAWARE ST
PO BOX 30
NAPPANEE IN 46550-0030
574-773-7791 Fax 574-773-2895

www.newmarcorp.com

Some features in our literature are optional. Colors and finishes are photographic representations. The actual materials may look different. Prices, specifications and floorplans are subject to change at Newmar's discretion, without prior notice or obligation. Please see your dealer for actual samples and specifications. ©2010 Newmar Corporation. Litho in USA. NEW21700 7/10-15M

Warranty

Newmar Express Limited Warranty - As proof of our commitment to you, we at Newmar back every motorhome with our industry-leading, one-year Newmar Express Limited Warranty. Ask your dealer for details.

Limited Five-Year Structural Warranty - If any part of your Newmar recreational vehicle superstructure (which is the steel/aluminum structure of the sidewall, roof or frame) fails to perform properly within five years from the date of purchase, due to faulty workmanship or material supplied by Newmar, it will be repaired without charge for either parts or labor by Newmar. This structural warranty is available only to the original purchaser and is non-transferrable.

Factory Tour

We'd love to have you visit our production facility in Nappanee, Indiana, so you can see for yourself how much care and dedication we put into building every Newmar RV.

Tour times: Monday - Friday at 10 a.m. and 1 p.m. EST.

(Please arrive 15 minutes before the hour.)

Check-in: Tour area in building nine on Cheyenne Street.

Restrictions: No open-toed sandals; no children under 8.

For more information: 1-800-860-0086.

We hope to see you soon!

Extra Mile Differences

Doing things "well enough" just isn't good enough here at Newmar. We never stop thinking about how to make every element of our products better, safer and more enjoyable. We've highlighted some of these **Extra Mile Differences** in this brochure so you can see where and how our commitment is realized – in the way your coach is built as well as the way it supports your enjoyment of life on the road.

We try to live by the Golden Rule, and we try to work by it, too. We won't settle for anything less than what's right for you – because you're not just our customer. You're our neighbor. And we truly believe in "loving your neighbor as yourself." **That's the essence of the Newmar difference.**