

08 CAMBRIA





SMARTSPACE
WEB

GET MOVING.

Traveling is just more fun in a 2008 Itasca Cambria®. It packs several unique, user-friendly features into a sleek motor home that is easy to maneuver. You'll find plenty of places to relax, including a day bed in the 29H and a U-shaped dinette in the 26A (shown here). These are just a couple of the highlights of the

SmartSpace™ design philosophy that makes the most of the available space in the Cambria. Numerous upgrades are also available, including an UltraLeather™ package that lets you travel in added style and comfort. In 2008, the Itasca Cambria is the choice for full-size RV comfort in a fun-to-drive package.

FEELS LIKE HOME

Get comfortable in your Cambria. Enjoy the class and comfort provided by the available UltraLeather package, including a sofa on the 29H that converts into a comfortable bed. The entertainment center includes an AM/FM stereo, iPod/MP3 hookup and a CD/DVD player. You can watch a movie on the standard 12-volt 19" LCD TV without generator or shoreline power. A King-Dome® RV digital satellite system can be added for more channels on the road.

When it's time to make dinner, take advantage of the space-saving features in the galley, especially the slideout pantry (NA 29H) and double-bowl sink with cover. A water filtration system is available for clear, filtered drinking water.

Residential features like thermostat-controlled heating and air conditioning make you feel at home. Other thoughtful touches include day/night pleated shades, vinyl floorcovering in the galley and bath areas, and a child safety-seat tether in the dinette.

The available electric/LP water heater includes EMS (energy management system). This monitors the microwave and electric water heater usage and temporarily postpones operation of the water heater while the microwave is running to minimize the possibility of tripping a campground circuit breaker.

WEB Select a Key Feature

The **WEB** icon designates a Winnebago Industries Key Feature. For further in-depth information and photos, use the Drop-down Menu or click on the 'Key Features' page at winnebagoind.com.



26A Desert Shadows with Sierra Maple

ENTERTAINMENT CENTER The available 27" LCD TV is sized and positioned so you can maximize your viewing pleasure. Add the 300-watt inverter for 110-volt power so you can watch your favorite programs when a shoreline source is not available.



GALLEY The galley is full-featured and includes a slideout pantry on the 26A, a double-bowl sink with cover, a flip-up counter top extension, and other space-saving features that make meal preparation quick and easy.



FULL-EXTENSION DRAWER SLIDES Drawers are sized to maximize storage, hold tight with positive latches and open fully for easy access to stored items.



DINETTE The U-shaped dinette table in the 26A sits on a single pedestal for more legroom and quickly converts into a comfortable bed.



INNOVATIVE DESIGNS

SmartSpace design elements give you more flexibility in the Cambria. This is especially true in the 29H, which offers two sliderooms, including a unique lounge area in the back. The lounge features a day bed that expands your leisure space without sacrificing comfort. It faces the available 14" LCD TV for your enjoyment. This unique layout also incorporates a large, fully enclosed rear bath, full-size wardrobe and a spacious chest of drawers.

DAY BED Relax in front of the available TV by day and sleep comfortably at night. The comfortable day bed converts quickly and easily to a queen-size bed.



WARDROBE The 29H offers plenty of storage space in this wardrobe and the adjoining chest of drawers. The available 14" LCD TV swivels against the wall when not in use.

GRAB THE WHEEL

Slide behind the wheel of the Cambria and enjoy the ride. High-back cab seats in available UltraLeather make every trip enjoyable.

For entertainment on the road, the RV Radio® includes an AM/FM stereo, CD player, weather band and an auxiliary iPod/MP3 input. A steering wheel remote and handheld remote give you control throughout the coach.

Upgrade your RV Radio with the available Sirius® Satellite radio package. Sirius brings you 130 channels of crystal-clear programming and a free six-month subscription. It is also iPod ready so you can control and listen to your iPod on the dash stereo. A radio power switch allows you to power the dash radio from the auxiliary battery when parked.

Leveling is easy when you choose the available hydraulic leveling jacks. A touchpad just inside the entrance door sets your Cambria on an even plane at the touch of a button.

WEB SIRIUS® RV-RADIO



CAB SEATS

Enjoy the ride in comfortable cab seats with armrests, fixed lumbar support, slide/recline adjustments and available UltraLeather.



STORAGE

Cambria maximizes exterior storage for easy access to your gear.



REARVIEW MONITOR

Gain peace of mind when backing and maneuvering by using the available rearview monitor, which mounts neatly between the sunvisors.



EXTERIOR ENTERTAINMENT CENTER

Enjoy your favorite music with the available exterior entertainment center. It features an AM/FM stereo, CD player, 12-volt DC power-point, TV jack and removable table.



WEB TRUELEVEL Eliminate tank-level guesswork with our exclusive TrueLevel™ holding tank monitoring system. It incorporates detector cells that determine liquid levels from outside the tank. No probes means no more corrosion, just accurate readings, time after time.



LEVELING JACKS

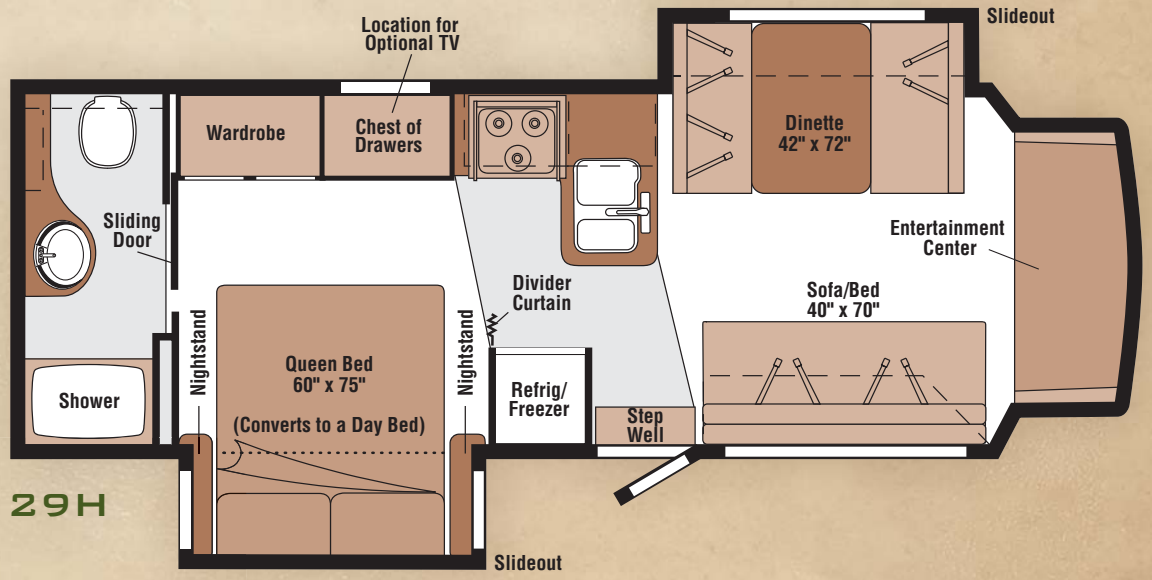
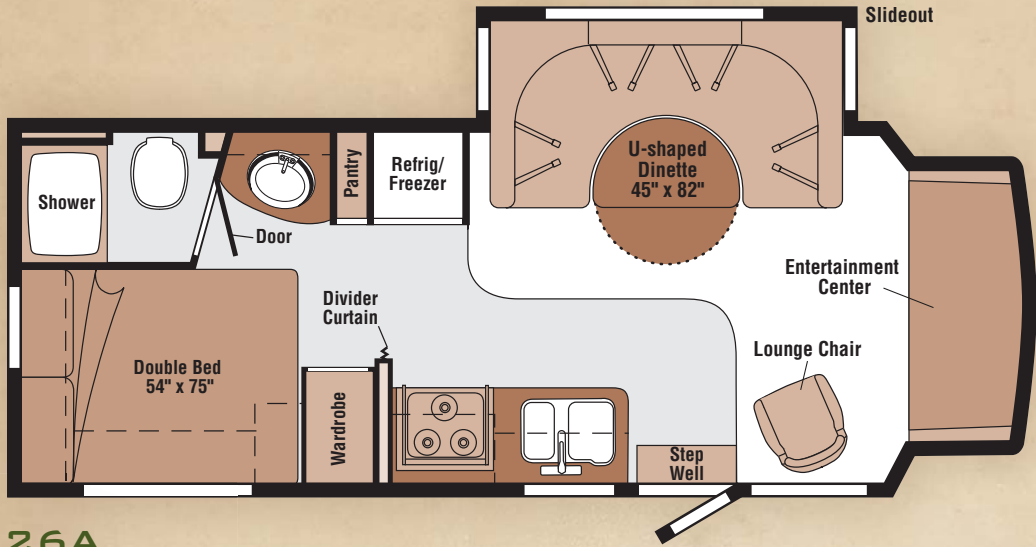
Control the automatic leveling jacks from the entrance door so you can watch them lower into position.

08 GAMBRIA FLOORPLANS

Carpet
 Vinyl Floorcovering

 Seat Belts

Note: Dimensions shown are for sleeping space only and may vary due to styling differences. Dashed lines denote overhead storage areas.



08 CAMBRIA SPECIFICATIONS

WEIGHTS & MEASURES	26A	29H
Length	26'7"	29'11"
Exterior Height¹	10'5"	10'5"
Exterior Width	7'11.2"	7'11.2"
Exterior Storage² (cu. ft.)	43.1	38.3
Awning Length	17'	19'
Interior Height	6'5"	6'5"
Interior Width	7'8"	7'8"
Freshwater Capacity w/Heater³ (gal.)	43	44
Holding Tank Capacity - Black/Gray³ (gal.)	29 / 37	36 / 29
LP Capacity⁴ (gal.)	18	18
Fuel Capacity (gal.)	55	55
GCWR⁵ (lbs.)	20,000	20,000
GVWR (lbs.)	14,050	14,050
GAWR - Front (lbs.)	4,600	4,600
GAWR - Rear (lbs.)	9,450	9,450
Wheelbase	182"	220"

AUTOMOTIVE/CHASSIS	26A	29H
Ford® E450 Chassis – 6.8L Super-Duty V10 SOHC Triton® engine, 305-hp, automatic transmission, TorqShift™ 5-speed w/tow/haul feature, 4-wheel ABS, 130-amp. alternator, dual air bags	S	S
Trailer Hitch⁵ 5,000-lb. drawbar/350 lbs. maximum vertical tongue weight & wiring, 7-pin connector, Wheel Liners stainless steel	S	S
Air Springs auxiliary rear, Leveling Jacks (Front & Rear) HWH® hydraulic, automatic, Wheels stylized aluminum	0	0

CAB AREA & DRIVER CONVENIENCES	26A	29H
Beverage Holder, Cab Seats (Fabric) armrest, fixed lumbar support, multiadjustable slide/recline, Cruise Control, Curtain cab divider, Power Door Locks driver/passenger/main entry, Power Cab Windows, Powerpoint 12-Volt DC/Cigarette Lighter, Steering Wheel tilt w/power-assist, Sunvisors, Trim Panels driver & passenger doors	S	S
Cab Seats UltraLeather™, Instrument Panel Appliqué Leather Laser-Wave, Monitor System rearview w/single camera, monitor, Audiovox®	0	0

ENTERTAINMENT	26A	29H
RV Radio® (Cab) AM/FM stereo/CD player, iPod/MP3 input, weather band, speakers (4) w/remotes, Jensen™, Radio Power Switch main/auxiliary battery, TV DC 19" LCD, stereo w/remote, Stereo System (Coach) AM/FM radio, CD/DVD player, iPod/MP3 input, speakers (2), subwoofer, TV Enhancement Package 12-volt DC powerpoint, interior jack, coax wiring, cable input	S	S
Entertainment Center (Exterior) AM/FM radio w/CD player & remote, DC receptacle, AC duplex receptacle, TV jack, radio antenna, speakers (2), lockable compartment, removable TV table, Satellite Radio Sirius® includes 6-month paid subscription, iPod interface connector, Satellite Dish Antenna RV digital, manual, Satellite System King-Dome® RV digital, in-motion w/elevation sensing unit, TV 27" LCD, color AC, stereo w/remote	0	0
TV 14" LCD stereo w/remote, 12-volt DC	0	0

INTERIOR	26A	29H
Ceiling fabric, Countertops laminate, Lights ceiling, incandescent w/wall switches, Powerpoint 12-Volt DC, Shades day/night pleated (lounge, dinette & bedroom), Mini Blinds (galley & bath), Roof Vent nonpowered (lounge), powered (bath), Telephone Input	S	S
Roof Vent powered ventilator fan, lounge, Windows dual-glazed/thermo-insulated	0	0
Light decorative dinette area	S	S

FURNITURE	26A	29H
Dinette w/access to storage below	S	S
Sofa/Bed 70" x 40" w/throw pillow	S	S
Chair lounge, hoop-base, swivel/glider, Dinette U-shaped w/access to storage below, slide-out baskets	S	S
UltraLeather Furniture Package cab seats, dinette, sofa (29H), lounge chair (26A)	0	0

GALLEY	26A	29H
Faucet single-control, Moen®, Microwave/Convection Oven Sharp®, Range Top 3-burner, drawer below, Range Hood vented w/light & fan, Refrigerator/Freezer large, double-door, 2-way, Norcold®, Sink Cover	S	S
Countertop flip-up extension	S	S
Pantry	S	S
Range 3-burner w/oven, drawer below, Magic Chef®, Water Filtration System	0	0

BATH	26A	29H
Cabinet lavatory, Cabinet(s) medicine, Faucet (Lavatory) single-control, Faucet (Shower) dual-control w/flexible showerhead, Light shower, Shower Door retractable, Skylight	S	S

BEDROOM	26A	29H
Bed double, removable bed cover, pillows, pillow shams, throw pillow	S	S
Day Bed queen, split mattress	S	S

EXTERIOR	26A	29H
Awning Rails w/rain gutters, Door entrance w/separate screen door, deadbolt lock, Entrance Door Step single, manual, Ladder, Light porch w/interior switch, Mirrors plate-mounted, manual adjust w/convex, Mudflaps rear, Receptacle AC duplex, Running Boards fiberglass w/front wheel lips, Sidewall Skin 1-piece smooth fiberglass, Storage Compartments w/trunk liner	S	S
Awning patio, Entrance Door Step single, electric w/doorjamb switch, Mirrors plate-mounted, electric/remote w/defroster, white (silver w/full-body paint)	0	0

SYSTEMS	26A	29H
HEATING & A/C – Automotive Heater/Air Conditioner blend air system, Air Conditioner (Roof) 13,500 BTU, ceiling-ducted w/wall thermostat, Furnace 30,000 BTU, low-profile	S	S
A/C Heat Pump	0	0
ELECTRICAL – Auxiliary Start Circuit, Battery (1) (Coach) Group 24 deep-cycle, Battery (Coach) Disconnect System, Dual Battery charge control (automatic), Electrical Distribution System AC breaker panels, DC automotive fuses, 45-amp. converter/charger, Generator Prep Kit, Monitor Panel battery condition gauge, generator hourmeter gauge, generator start/stop switch, holding tank levels, LP tank level, water heater lights, water heater switch, water pump switch, water tank level, Power Cord 30-amp., 25', Service Center (Electrical) cable input, power cord, portable satellite dish hookup, telephone input	S	S

SYSTEMS	26A	29H
Batteries (2) Group 24 deep-cycle, Generator 4,000-watt Cummins Onan® MicroQuiet™ gas, Inverter DC/AC, 300-watt (required w/27" TV)	0	0
PLUMBING/LP – Drain water tank, 1" brass ball valve w/lever, Service Compartment (Drainage/Water) pressurized city water hookup/tank diverter fill, drainage valves, 10' sewer hose, Tank holding, heated compartment, Tank LP , permanent mount w/gauge, TrueLevel™ Holding Tank Monitoring System, Water Heater 6-gallon electronic ignition, LP gas, Water System Winterization Package water heater bypass valve & siphon tube, Water Pump demand, permanent magnet motor w/diaphragm	S	S
Exterior Wash Station w/lighted pump switch, Water Heater 6-gallon electronic ignition, 120 VAC/LP gas w/energy management system	0	0

SAFETY	26A	29H
Airbags driver & passenger, Assist Bar interior, Assist Handle exterior, soft-touch, Bumpers front & rear, Child Seat Tether Anchor, Courtesy Light(s) interior, Detectors/Alarms LP leak, smoke, carbon monoxide, Fire Extinguisher 10 BC, Ground Fault Interrupter, Lights high-mount brakelamps, Seat Belts cab, 3-point adjustable, Seat Belts lap (in selected areas), Window escape	S	S

WARRANTY ⁶	26A	29H
12-month/15,000-mile basic warranty,⁷ 36-month/36,000-mile limited warranty on structure,⁷ 10-year limited parts & labor warranty on roof skin⁷	S	S

- The height of each model is measured to the top of the tallest standard feature and is based on the curb weight of a typically equipped unit. The actual height of your vehicle may vary by several inches depending on chassis or equipment variations. Please contact your dealer for further information.
 - The load capacity of your motor home is designated by weight, not by volume, so you cannot necessarily use all available space when loading your motor home.
 - Capacities are based on measurements prior to tank installation. Slight capacity variations can result due to installation applications.
 - Capacities shown are tank manufacturer's listed water capacity (W.C.). Actual filled LP capacity is 80% of listing due to overfilling prevention device on tank.
 - Actual towing capacity is dependent on your particular loading and towing circumstances which includes the GVWR, GAWR, and GCWR as well as adequate trailer brakes. Please refer to the Operator's Manual of your vehicle for further towing information.
 - See separate chassis warranty.
 - See your dealer for complete warranty information.
- NA Not Available
S Standard
O Optional
- Not all items available in combination. See dealer for details.

Winnebago Industries® continuing program of product improvement makes specifications, equipment, model availability, and prices subject to change without notice. Comparisons to other motor homes are based on the most recent information available at printing.

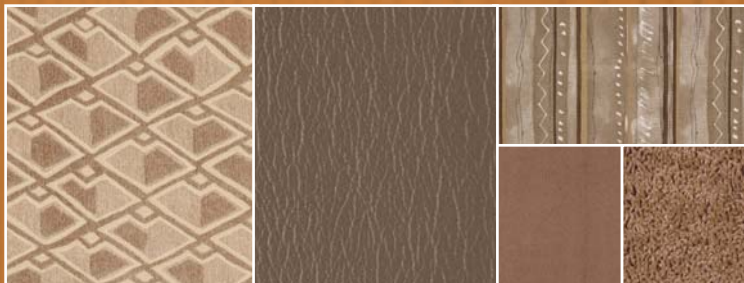
INTERIOR DECOR

Choose from three fabric selections and two cabinet wood choices.



2-TONE
SOFA

MAIN	ULTRA-LEATHER	BEDSPREAD	
		ACCENT	CARPET



Desert Shadows w/available Pine Cone UltraLeather™



 Forest Ridge w/available Timber UltraLeather



 Nantucket Fog w/available Truffle UltraLeather



Washed Maple



Sierra Maple

STANDARD GRAPHICS



Metallic Gold



Dark Titanium Metallic

FULL-BODY PAINT



Greystone



Sandstone

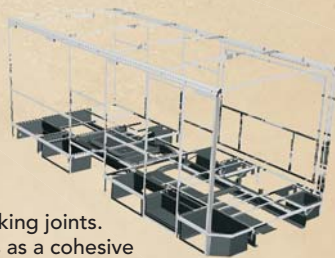


**BUILT BY WINNEBAGO INDUSTRIES.
BUILT TO LAST.**

Itasca motor homes are built by Winnebago Industries, the company that defined motor homes. The company that built its reputation on quality construction. The company that transformed the motor home concept into a way of life.

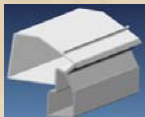
Today, Winnebago Industries brings that reputation for quality and its 49-year history of motor home innovation to the design and construction of every motor home. It's all a part of SuperStructure[®], our exclusive system of proprietary structural components that instills each motor home with improved strength and durability.

SOLID FOUNDATION Steel and aluminum truss work provides a solid, flat foundation for the floor and sidewalls. Winnebago Industries engineers also take special care to distribute the weight of components to ensure proper handling and stability.



INTERLOCKING JOINTS

The floor, sidewalls and roof are all integrally connected using interlocking joints. This creates a coach body that acts as a cohesive unit for improved strength and durability.



E-COATING Winnebago Industries employs an exclusive 12-stage automotive-style dip tank process to apply an advanced electrodeposition coating on critical steel components for superior corrosion protection.



THERMO-PANEL[®] SIDEWALLS Invented by Winnebago Industries, Thermo-Panel construction combines a fiberglass panel, high-density, block-foam insulation and aluminum support structures to create some of the most durable, lightweight sidewalls in the industry.

ATTENTION TO DETAIL Whether it's sending every coach through a high-pressure water tunnel to check for leaks or labeling each individual wire and bar-coding parts to save time and frustration during service, Winnebago Industries considers every detail to ensure your Itasca motor home provides you with years of pleasure.

STRONG AS STEEL Appliances are secured directly to embedded steel plates for added safety.



1-year-old Itasca fiberglass roof



1-year-old competitor's rubber roof

FIBERGLASS ROOF The Cambria features a crowned, one-piece fiberglass roof, backed with a 10-year limited parts-and-labor roof skin warranty. Fiberglass offers superior strength, attractiveness and durability over the rubber roofs found on many competitive models which can chalk, streak and degrade over time. Fiberglass also provides increased puncture and tear resistance.



TAKE A TOUR We're proud of our process, state-of-the-art facilities and the people who make Winnebago Industries number one. We invite you to visit our factory in Forest City, Iowa, for a first-hand look at the dedication and technology behind every motor home we build.



RECOGNIZED QUALITY The Recreation Vehicle Dealer Association annually rates RV manufacturers and awards the Quality Circle award to manufacturers who provide exceptional products, service and support. Winnebago Industries is proud to be the only manufacturer to receive this award every year since its inception.



COMMITTED TO SERVICE We back our motor homes with the industry's best service after the sale.

- 12-month/15,000-mile basic limited warranty
- 36-month/36,000-mile warranty on structure
- Standard 10-year limited parts-and-labor roof skin warranty
- Complimentary 24-hour roadside assistance program
 - RV Technical Assistance Hotline
 - RV Service Appointment Assistance
 - Emergency Trip Interruption
 - Emergency Message Service
 - Nationwide Trip Routing
 - Fee-Free Travelers Cheques
- TripSaver Fast Track Parts. TripSaver guarantees that in-stock warranty parts ship directly to your dealer within 24 hours.
- National dealer service network



WIT CLUB Itasca owners are like family. Joining the Winnebago-Itasca Travelers is a great way to meet and travel with other Itasca enthusiasts. Members enjoy:

- Caravans and rallies
- Local and state group activities
- RV travel benefits



WINNEBAGOIND.COM
Visit us on the web for more info on all of our motor homes, the latest product updates and a host of web-exclusive content.

For Sales and Service Information Contact:



Built proudly by



NYSE listing: WGO

©2007 Winnebago Industries, Inc.

Printed in USA

Seat belts are your most important hookup. Always buckle up.