

1999

CHIEFTAIN®

Chieftain



# 1999 CHIEFTAIN

Take your time with this year's widebody Chieftain, and let it expand your idea of what a motor home can be.

The 1999 Chieftain is one of our greatest achievements. It's loaded with some of the most innovative, and functional, amenities you'll find in any motor home made today. At first glance you'll notice standard features like the StoreMore™ Hydraulic Slideout System with large compartments that move with the slideout so you can easily get to your gear. Further touches include formed compartment doors that create a solid weather seal and a uniform external appearance. And to maximize the cooling power of dual high efficiency air conditioners, the Chieftain comes standard with the PowerLine™ Energy Management System. It monitors electrical usage and automatically cycles appliances off if power demands exceed available power. Inside the Chieftain you'll enjoy a microwave/convection oven with range fan and one of the largest galleys available. And to add to its appeal, a sleek, bus-like front end make the 1999 Chieftain the ideal motor home for those of you interested in stretching your horizons ever farther.



**34Y** A leather seat upgrade, a woodgrain vinyl plank galley floor, and available fluorescent lighting are just a sampling of the available touches you'll find in the Chieftain. With the slideout extended you have more room without sacrificing cabinet space or outside storage space.



**35U** An incliner lounge chair with footrest makes a great spot to take a nap or to enjoy the overhead entertainment center with available VCR.



**34Y** The pull-out work station is available on all models. There's also an extra storage area below to keep your "office on wheels" better organized.



**36L** Salem Cherry cabinetry gives the Chieftain a rich, luxurious look while ducted roof air conditioning with dampening, rotating vents gives you multi-season comfort. The available table with self-storing leaf and chairs has plenty of room for the two extra folding chairs that store neatly beneath the bed.



**35U** There's plenty of room to change comfortably in this bedroom thanks to a standard bed / wardrobe slideout. It also includes a desk / vanity and chest of drawers.



**36L** Makeup lights, a large frosted skylight and a glass shower door create a bathroom that's bright and roomy.



**35U** This galley is sure to impress, with its refrigerator/freezer with available icemaker and water purification system. Under cabinet toe-kicks allow you to get close to the counter comfortably.



**34Y** Our StoreMore slideout storage compartments slide out with the room to make loading and unloading a breeze.



**34Y** This compartment is packed with convenience, including a wash station, swivel drain and sewer hose, city water hookup and TV cable as well as phone and cable TV input jacks.

NEVER A  
SHORTAGE OF  
INNOVATIONS.

## STOREMORE HYDRAULIC SLIDEOUT SYSTEM

Thanks to our exclusive design you don't have to sacrifice storage space when you purchase a slideout. Inside and out, you'll enjoy easy access compartments with a surprisingly generous amount of room for your gear. You won't find undersized or non-functional storage areas behind our compartment doors. (Others install compartment doors solely for aesthetic appeal.)

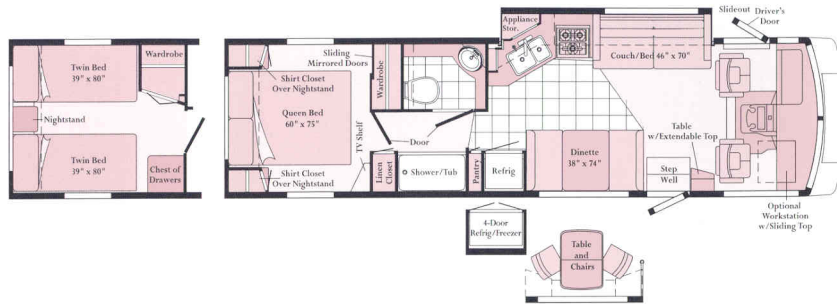
## POWERLINE ENERGY MANAGEMENT SYSTEM

The Chieftain also offers the new PowerLine Energy Management System. When utilizing 30 amp service, this fully automatic system has the ability to run two roof air conditioners at the same time by monitoring the usage of 120 volt electrical power and redistributing the power as needed.



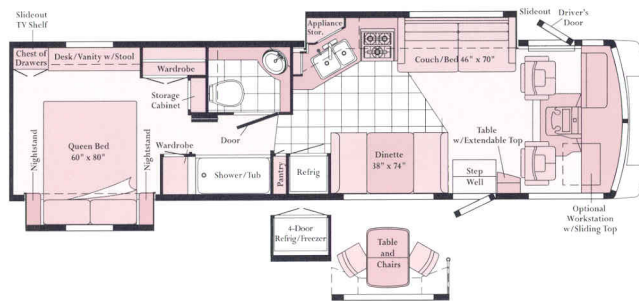
Our high standards made us one of the first motor home manufacturers to earn the title "Qualified Vehicle Modifier," identifying us as a leader among companies who build on Ford chassis.

YOUR LIFESTYLE IS YOURS ALONE. AND THANKS TO A WIDE



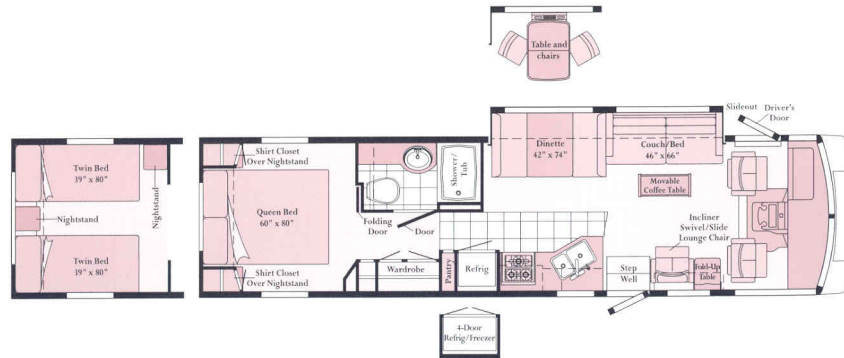
### 33B

- Slideout galley/couch floorplan.
- Widebody basement design.
- Split bath design with full tub/shower.
- Available 4-door refrigerator/freezer.



### 34Y

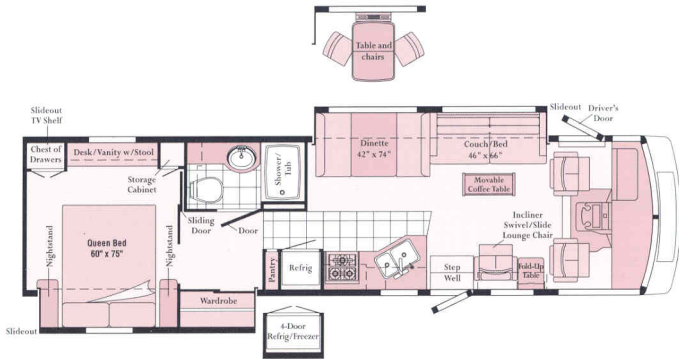
- Slideout galley/couch and bedroom floorplan.
- Widebody basement design.
- Two wardrobes for plenty of bedroom storage.
- Split bath design with full tub/shower.
- Desk/vanity in the bedroom.



### 35C

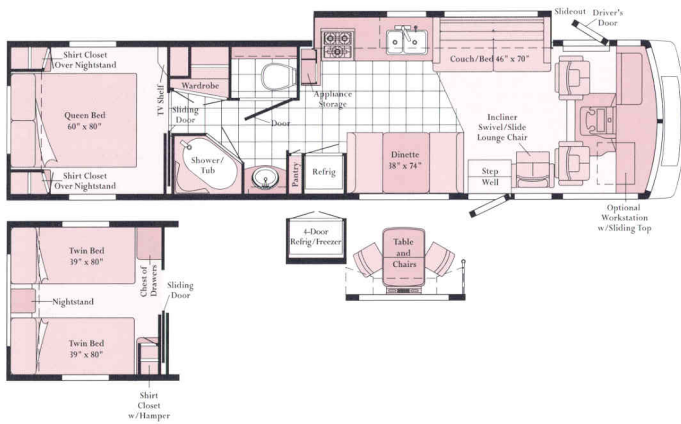
- New dinette/couch slideout floorplan.
- Widebody basement design.
- Available table and chairs.
- Large wardrobe.

# RAY OF WIDEBODY AND SLIDEOUT FLOORPLANS, SO IS YOUR CHIEFTAIN.



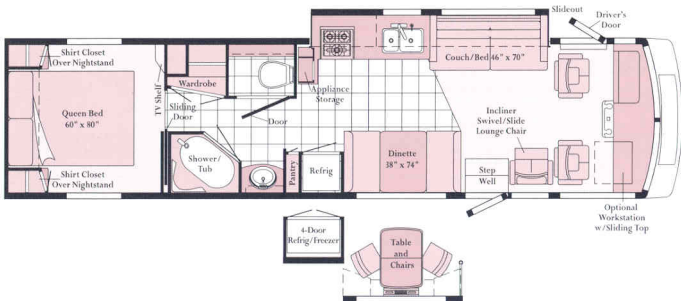
## 35U

- New dinette/couch slideout floorplan with coffee table.
- Large wardrobe area with full-length mirror.
- Widebody basement design.
- Desk/vanity in the bedroom.



## 36L

- Slideout galley/couch floorplan.
- Widebody basement design.
- Available table and chairs.
- Full tub/shower with glass door.
- Wardrobe by bath area.



## 36L-P

- Slideout galley/couch floorplan.
- Widebody basement design.
- Available table and chairs.
- Freightliner rear engine diesel power.
- No "step over" in driver/passenger area.



Note: Dimensions shown are for sleeping space only and dashed lines denote overhead storage areas.



# 1999 CHIEFTAIN SPECIFICATIONS

1999 CHIEFTAIN	33B	34Y	35C	35U	36L	36L-P
Length	33'9"	34'6"	35'9"	35'9"	35'11"	35'11"
Exterior Width <sup>Δ</sup>	8'5.5"	8'5.5"	8'5.5"	8'5.5"	8'5.5"	8'5.5"
Interior Height	6'8"	6'8"	6'8"	6'8"	6'8"	6'8"
Interior Width	8'0.5"	8'0.5"	8'0.5"	8'0.5"	8'0.5"	8'0.5"
Fuel Capacity (gal.) - Chev/Ford/Freightliner	NA/75/NA	75/75/NA	75/75/NA	75/75/NA	75/75/NA	NA/NA/90
Fresh Water Capacity w/Heater	76 gal.	98 gal.	98 gal.	98 gal.	98 gal.	92 gal.
Holding Tank Capacity - Black/Gray	55/53 gal.	55/53 gal.	40/48	40/48	55/53 gal.	55/53 gal.
LP Capacity <sup>∅</sup>	28 gal.	28 gal.	28 gal.	28 gal.	28 gal.	39 gal.
Wheelbase - Chev/Ford/Freightliner	NA/216"/NA	219"/228"/NA	219"/228"/NA	219"/228"/NA	233"/242"/NA	NA/NA/242"
Exterior Height w/AC*	11'11"	11'11"	11'11"	11'11"	11'11"	12'3"
Exterior Storage	113.3 cu. ft.	112 cu. ft.	94.1 cu. ft.	92.1 cu. ft.	157.7 cu. ft.	122.6 cu. ft.
GVWR (lbs.) - Chev/Ford/Freightliner	NA/20,500/NA	21,000/20,500/NA	21,000/20,500/NA	21,000/20,500/NA	21,000/20,500/NA	NA/NA/24,850

S Standard  
O Optional

	33B	34Y	35C	35U	36L	36L-P
<b>AUTOMOTIVE</b>						
Chassis - Chevrolet - 7.4L Vortec V-8 @ 265-HP, 145-amp. alternator, anti-lock brake system		O	O	O	O	
Chassis - Ford - 6.8L V-10 @ 275-HP, 130-amp. alternator, anti-lock brake system	S	S	S	S	S	
Chassis - Freightliner - Cummins ISB5.9L turbo diesel, electronic @ 275-HP, engine block heater, exhaust brake, 160-amp. alternator, two (2) chassis batteries, Allison MD3060 6-speed transmission, air brakes, air suspension w/electronic air dump						S
Tires (radial) - w/ spare (Ford chassis only)	S	S	S	S	S	S
<b>DRIVER CONVENIENCES</b>						
3-point retracting seat belts - (drv./frt. pass.) w/adjustable 4-position D-loop, seats w/reclining high-back design, hinged armrests, lumbar support, swivel/slide pedestal, lap belts in selected areas	S	S	S	S	S	S
12-V electrical supply/lighter	S	S	S	S	S	S
Auxiliary 12-V receptacle	S	S	S	S	S	S
Battery charge control - dual, automatic	S	S	S	S	S	S
Battery charger (solar) - wiring prep	S	S	S	S	S	S
Battery charger (solar) - 10-watt	O	O	O	O	O	O
Battery disconnect system - coach	S	S	S	S	S	S
Cabinet - center console						S
Convenience tray	S	S	S	S	S	S
Cruise control, steering - power assisted w/tilt wheel	S	S	S	S	S	S
Defroster fans - auxiliary 2-speed	O	O	O	O	O	O
Driver's door - w/roll-down window	S	S	S	S	S	S
Driver's seat - six-way power assist	O	O	O	O	O	O
Fog lamps, hood release - exterior key locks	S	S	S	S	S	S
Heating/air conditioning - automotive blend air system	S	S	S	S	S	S
Leather seats - drv. & pass., leather insert w/vinyl surr.	O	O	O	O	O	O
Map light, pleated shade - front wrap-around w/wands	S	S	S	S	S	S
Mirrors (rear view) - ext., low mounted, convex element	S	S	S	S	S	S
Mirrors (rear view) - ext., low mounted, electric w/remote & defrost	O	O	O	O	O	O
Rear view monitor system - cable ready	S	S	S	S	S	S
Rear view monitor system (Sony) - video/one-way audio	O	O	O	O	O	O
Rubber floor mats, wall-mount map pocket(s)	S	S	S	S	S	S
Service light - driver's side, exterior	S	S	S	S	S	S
Start circuit - auxiliary	S	S	S	S	S	S
Storage cabinet - (front & side overheads)	S	S	S	S	S	S
Sunvisors, window shades (2) - roller, light filtering	S	S	S	S	S	S

S Standard  
O Optional

	33B	34Y	35C	35U	36L	36L-P
Window - passenger slider w/screen	S	S	S	S	S	S
Windshield wipers (intermittent)	S	S	S	S	S	S
Work station - pull-out, dash mounted, passenger side	O	O	O	O	O	O
<b>ENTERTAINMENT</b>						
Antenna (radio) - roof-mounted, flexible rubber	S	S	S	S	S	S
C.B. prep kit - ant., coax wiring, 12-V power connection	O	O	O	O	O	O
CD changer - multi-disc w/remote	O	O	O	O	O	O
Entertainment center (patio) - DC receptacle, 110-V outlet, TV jack, radio antenna, AM/FM radio w/cassette or CD player, speakers (2), table, locking door	O	O	O	O	O	O
Satellite system pre-wiring - roof	S	S	S	S	S	S
Satellite system - digital <sup>∞</sup> w/elevation sensor	O	O	O	O	O	O
Sound system - deluxe, amplifier, 6 speakers	O	O	O	O	O	O
Stereo (cab) - AM/FM/cassette deck w/speakers (4)	S	S	S	S	S	S
Stereo power switch - for main or auxiliary battery use	S	S	S	S	S	S
Stereo system - bedroom	O	O	O	O	O	O
Stereo w/CD player (cab)* - AM/FM w/speakers (4)	O	O	O	O	O	O
Telephone input	S	S	S	S	S	S
TV (13" color) w/remote - located in bedroom	O	O	O	O	O	O
TV*, front (19" color) w/remote - video selection system	S	S	S	S	S	S
TV*, dinette (19" color) w/remote - video selection system	O	O				
TV enhancement package - antenna (amplified), DC receptacles (2), interior jacks (2), coax wiring, cable input, exterior antenna jack, TV shelf or stand	S	S	S	S	S	S
VCR w/remote	O	O	O	O	O	O
<b>SLIDEOUT</b>						
Slideout room - (driver's side)* approx. 20" extension, exterior storage compartments slideout w/room	S	S	S	S	S	S
Slideout room - (pass. side, bedroom)* approx. 24" ext.		S		S		
<b>INTERIOR</b>						
Carpeting w/pad - stain resistant	S	S	S	S	S	S
Ceiling lights - fluorescent, recessed	O	O	O	O	O	O
Ceiling lights - single & double	S	S	S	S	S	S
Ceiling vent - non-powered, galley	S	S	S	S	S	S
Ceiling vent - powered ventilator fan, galley	O	O	O	O	O	O
Ceiling vent - powered, bathroom	S	S	S	S	S	S
Clock - decorator style	S	S	S	S	S	S
Coffee table			S	S		

△ The Chieftain features a widebody design—over 96". In making your purchase decision, you should be aware that some states restrict access on some or all state roads to 96" in body width. Before making your purchase decision, you should confirm the road usage laws in the states of interest to you.

∞TV satellite system options do not include programming activation or receiver. Quality reception is only available in the lower 48 states.

Winnebago Industries' continuing program of product improvement makes specifications, equipment, model availability and prices subject to change without notice. Comparisons to other motor homes are based on the most recent information available.

S Standard  
O Optional

	33B	34Y	35C	35U	36L	36L-P
Color themes (interior) - Mercury (blush), Block Party (tan), Pewter (blue)	S	S	S	S	S	S
Courtesy lights (2) - w/wall switches	S	S	S	S	S	S
Interior feature group - woodgrain vinyl plank floor covering in galley, vinyl floor in bathroom*, solid surface galley countertop	O	O	O	O	O	O
Lamp(s)* - decorator style, wall-mounted in lounge	S	S	S	S	S	S
Picture* - framed					S	S
Wardrobe - mirrored door(s), carpeted floor, light, clothes rod, shelf (NA 35U)	S	S	S	S	S	S
Windows - tinted	S	S	S	S	S	S
Windows - dual glazed, thermo-insulated (tip-outs in bedroom)	O	O	O	O	O	O
<b>GALLEY</b>						
Appliance storage cabinet	S	S			S	S
Coffee maker	O	O	O	O	O	O
Decorative dinette light	S	S	S	S	S	S
Flooring (vinyl)	S	S	S	S	S	S
Fluorescent light - under cabinet	S	S	S	S	S	S
Microwave/convection oven - touch control	S	S				
Microwave/convection oven w/range fan - residential 30", touch control			S	S	S	S
Pantry* - slideout w/adjustable shelves, locking	S	S	S	S	S	S
Range hood - light, powered vent, monitor panel	S	S				
Range top - 3-burners w/storage below, range cover	S	S	S	S	S	S
Range w/large glass-doored oven - 3-burners, range cover, w/drawer below	O	O	O	O	O	O
Refrigerator/freezer - large, double-door	S	S	S	S	S	S
Refrigerator/freezer - large, double-door w/icemaker	O	O	O	O	O	O
Refrigerator/freezer* - four-door w/icemaker	O	O	O	O	O	O
Sink (double) - stainless steel, single control faucet, covers, tip-out utility tray - (NA 35C, 35U)	S	S	S	S	S	S
Spice rack	S	S				
Storage drawers - below dinette seats	S	S	S	S	S	S
Table & chairs (4)*	O	O	O	O	O	O
Wall border - decorative	S	S	S	S	S	S
Water purification system - (Everpure)	S	S	S	S	S	S
<b>BEDROOM</b>						
Bedsread(s), throw pillow(s)	S	S	S	S	S	S
Lamp(s)* - decorator style	S	S	S	S	S	S
Mattress(es) (Serta*) - w/non-slip mat, access to storage below, gas springs	S	S	S	S	S	S
Mirror - on backwall		S			S	S
Wall border - decorative	S	S	S	S	S	S
<b>BATHROOM</b>						
Clothes rod - removable	S	S	S	S		
Flooring (vinyl)	S	S	S	S	S	S
Lavatory cabinet, makeup lights	S	S	S	S	S	S
Linen cabinet*	S	S	S	S	S	S
Magazine rack	S	S	S	S	S	S
Medicine cabinet(s)	S	S	S	S	S	S
Mirror(s) - wall-mounted	S	S	S	S	S	S
Shower/tub - shower head	S	S	S	S	S	S
Shower door(s) - glass	S	S	S	S	S	S
Sink - oval, large w/ledge back	S	S	S	S	S	S
Skylight & shower light	S	S	S	S	S	S
Toilet w/sprayer & foot pedal - porcelain, tissue holder	S	S	S	S	S	S
Towel bar, towel rack - 3 rods, built into bath door	S	S	S	S	S	S
Towel ring					S	S
<b>EXTERIOR</b>						
Awning rail	S	S	S	S	S	S
Awning* patio w/metal wrap	O	O	O	O	O	O
Bumpers - front: molded into front cap, rear: steel reinforced styled fascia	S	S	S	S	S	S
Entrance door w/screen door - latch & deadbolt locks, electric steps w/door activated switch	S	S	S	S	S	S

S Standard  
O Optional

	33B	34Y	35C	35U	36L	36L-P
Graphics package - choice of Platinum Metallic (rec. w/Mercury & Block Party) or Plum Metallic (rec. w/Pewter)	S	S	S	S	S	S
High-gloss exterior - fiberglass skin	S	S	S	S	S	S
Holding tanks - heated compartment, sewer hose	S	S	S	S	S	S
Ladder, mud flaps - rear	S	S	S	S	S	S
Outlet - 110-V, curbside, porch light w/interior switch	S	S	S	S	S	S
Storage compartments - single paddle latch, lights, gas struts, locks	S	S	S	S	S	S
Tire tools - wrench, leverage bar, tire hoist rod* (NA 36L-P)	S	S	S	S	S	S
Trailer towing package w/hitch, trailer wiring extension	S	S	S	S	S	S
Trunk*	S	S	S	S	S	S
Undercoating*		O	O	O	O	O
Wash station - pump switch, water fill door - lockable	S	S	S	S	S	S
Wheel liners - stainless steel	S	S	S	S	S	S
Wheels - stylized						O
<b>SYSTEMS</b>						
30-amp. power supply, batteries (2) - deep cycle RV	S	S	S	S	S	S
50-amp. power supply*	O	O	O	O	O	O
Air-conditioning system (Coleman) - ceiling distribution	S	S	S	S	S	S
Auxiliary automotive heater	S	S	S	S	S	S
Electrical distribution system - breaker panels, converter/charger (45-amp. 33B & 34Y, 55-amp. 35C, 35U, 36L & 36L-P)	S	S	S	S	S	S
Furnace - ducted, low profile, 40,000-BTU	S	S	S	S	S	S
Generator* (Onan) - 5,000-watt, gas						
Generator (Onan) - 6,500-watt, gas	O					
Generator (Onan) - 6,500-watt LP						S
Generator (Onan) - 7,000-watt gas		O	O	O	O	
Generator* (Onan) - 7,500-watt quiet diesel						O
Holding tank flushing system - black tank only	S	S	S	S	S	S
HWH* hydraulic leveling jacks - front & rear	S	S	S	S	S	S
Inverter (Heart Interface*) - 130-watt for TV/VCR	O	O	O	O	O	O
LP tank - permanent mount w/gauge	S	S	S	S	S	S
Monitor panel - water, holding & LP tank levels, battery condition gauge, water heater ignition switch w/pilot indicator light, water pump switch, generator hourmeter, generator start/stop switch	S	S	S	S	S	S
PowerLine Energy Management System	S	S	S	S	S	S
Service center - provides access to cable TV & telephone inputs, city water hook-up/tank diverter fill, exterior wash station w/pump switch, sewer hose, drainage valves	S	S	S	S	S	S
Water heater - 6-gal., electronic ignition	S	S	S	S	S	S
Shoreline/generator automatic changeover switch	S	S	S	S	S	S
Water heater winterization by-pass valve	S	S	S	S	S	S
Water pump (demand) - accumulator tank	S	S	S	S	S	S
Water system winterizing system - automatic	O	O	O	O	O	O
Water system winterizing valve	S	S	S	S	S	S
<b>SAFETY</b>						
3-point retracting seat belts - (drv./frt. pass.) w/4-position adjustable D-loop	S	S	S	S	S	S
Assist handle* - exterior	S	S	S	S	S	S
Assist strap & handle* - interior	S	S	S	S	S	S
Carbon monoxide detector/alarm, LP leak detector/alarm, smoke detector/alarm	S	S	S	S	S	S
Fire extinguisher (10-B.C.)	S	S	S	S	S	S
Ground fault interrupter	S	S	S	S	S	S
High mount brake light	S	S	S	S	S	S
Lap belts - in selected areas	S	S	S	S	S	S
Windshield - laminated safety glass	S	S	S	S	S	S
Window - escape	S	S	S	S	S	S
<b>WARRANTY</b>						
12 month/15,000 mile basic warranty, 36 month/36,000 mile warranty on structure,** 10 year limited parts & labor warranty on roof	S	S	S	S	S	S

∅ Capacities shown are tank manufacturer's listed water capacity (W.C.). Actual filled LP capacity is 80% of listing due to safety shut-off required on tank.

\* The height of each model is based on the curb weight of a typically equipped unit on the standard chassis. The actual height of your vehicle may vary by as much as 2" depending on chassis or equipment variations.

\*\*Not all options available in combination. See dealer for details.

\*\*See your dealer for complete warranty documentation information.

## INTERIORS

Mercury  
with Salem Cherry  
or Mystic Oak

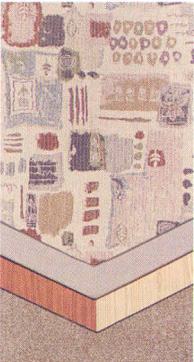


Pewter  
with Salem Cherry  
or Mystic Oak



*Every motor home interior is stitched, constructed, sanded and stained with care in our factory by our own employees. We even perform extensive wear tests to ensure long-lasting durability. This concept is called Home Comfort Design, and it gives us complete control over the fit and finish of the final product. We take great pride in offering you high-quality, handcrafted living spaces to match your lifestyle.*

Block Party  
with Salem Cherry  
or Mystic Oak



## EXTERIOR VALANCE PANELS



Platinum

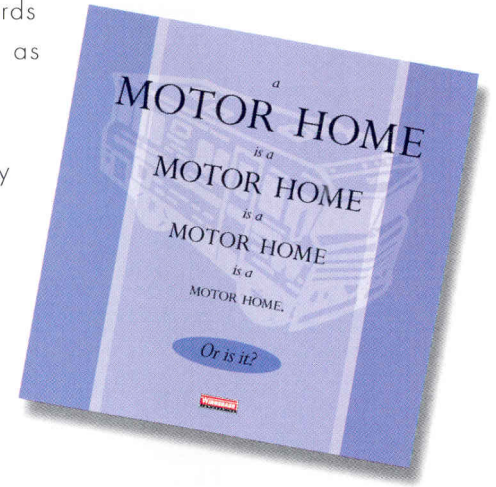


Plum

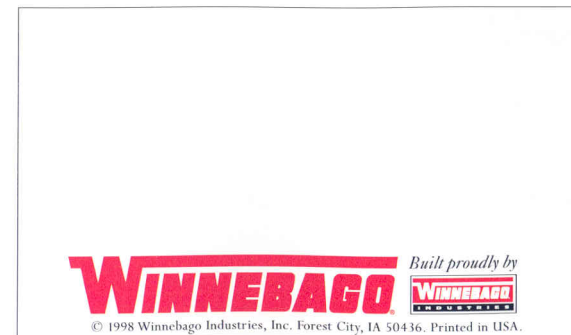
*This year's exterior lower valance colors are Platinum, suggested with Mercury and Block Party; and Plum, suggested with Pewter. However, you may order either valance color, regardless of your interior choice.*

Ask for the Winnebago Industries buyer's guide and discover why all motor homes are not created equal.

The process of buying a motor home can be intimidating, even if you're a veteran. And in a market saturated with flashy first impressions, the true signs of quality are often hard to spot. So we've put together a user-friendly guide to help you make some educated observations as you compare Winnebago Industries motor homes to the competition. It explains our uniquely superior on-site manufacturing processes, highlights the importance of meeting (and exceeding) industry standards and, best of all, it's free. Use it as a reference tool when shopping around, or familiarize yourself with some key safety and quality considerations. Ask for the guide next time you visit your Winnebago Industries dealer, and upgrade your motor home buying savvy.



Visit us at [www.winnebagoind.com](http://www.winnebagoind.com)



Seat belts are your most important hookup. Always buckle up.