

2004 WINNEBAGO MINNIE®

Don't let
the name
fool you.

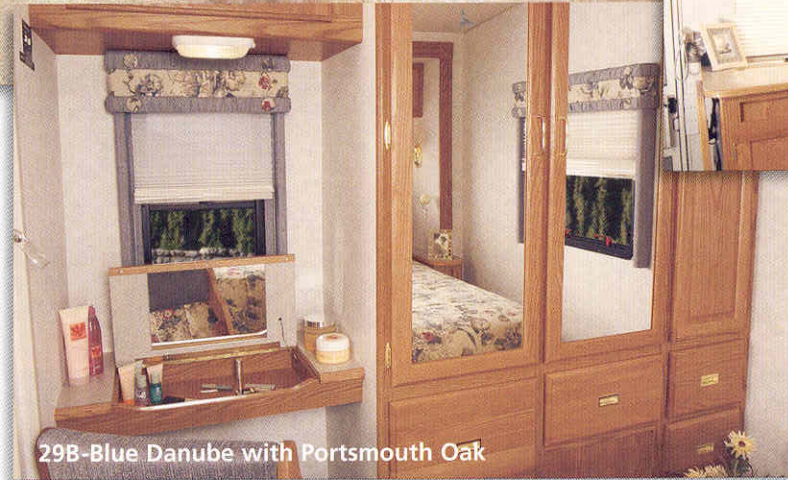




It's in the details.

Step into the Minnie and you're immediately drawn to the comfortable Stitchcraft furniture and Portsmouth Oak cabinets. The durable no-wax vinyl flooring extends all the way to the front entrance for easy cleanups. The day/night pleated shades control light, keep the interior cooler and provide privacy. Interior lighting with wall switches is strategically positioned to provide a warm ambience.

Some of the most important features of a motor home are things you never see. The thermostat-controlled, ceiling-ducted air conditioning distributes consistent comfort throughout the motor home. The available roof air heat pump takes the chill out on cool mornings, without firing up the furnace. And there's plenty of storage space in areas you'd least expect it.



You're the cook.

The galley combines a three-burner Magic Chef® range/oven with a built-in microwave to let you prepare easy, delicious meals. The large cabinet pulls make access to the abundant storage easy. The molded double sink is recessed, and a sink cover provides additional work space. Delicious drinking water is yours to enjoy with the available water filtration system. Also available on the 31C is a galley TV/storage cabinet with a 19" stereo color TV, remote and DVD/VCR.^d

Big bedroom.

The 29B features a rear slideroom, creating an impressive bedroom area. Storage is plentiful with deep overhead cabinets; a large, mirror-doored wardrobe with drawers; and underbed storage as well. The vanity area includes a flip-up mirror and doubles as a handy place to write letters or tap on a laptop computer.

Add it up.

The best-selling Class C motor home didn't get that way by accident. The 2004 Minnie is the total package of drivability and user-friendly comfort. You'll find that it's loaded with premium amenities you'd normally expect to find only in a Class A motor home. This brochure incorporates a variety of images that depict specific amenities like the RV Radio,® Stitchcraft furniture, available front entertainment center with 25" stereo TV and available two-way radios with built-in charging station. We hope this information helps you make an informed purchase decision.

Thank you for considering a 2004 Winnebago Minnie.

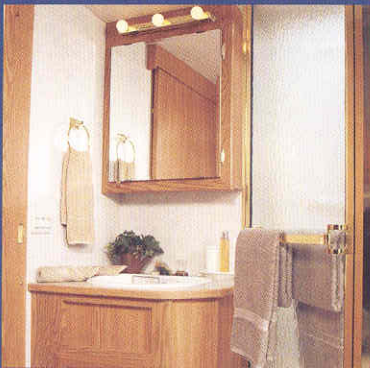
29B-Sand Frost with Portsmouth Oak

29B-Blue Danube with Portsmouth Oak



Two-way radios.

For communication in the campground or peace of mind on day trips, the four available two-way radios recharge from the coach's house batteries at their built-in charging station. The nickel-metal hydride batteries provide up to 15 hours of standby and 90 minutes of talk time on a single charge.



Just like home.

The bath area includes convenient upscale features like a residential-height toilet with foot-pedal flush, a skylight and abundant lighting. The 29B, 31C and 32G offer the added spaciousness of a split-bath design.



It's not a reach.

The service center is conveniently located for easy access. Extend your camping season with the standard winterization package and available heated holding tanks.



Watch what you want, when you want.

You'll like what you see when you equip your Minnie with the available front entertainment center that includes a 25" stereo TV with remote and a video selection system. For even more choices for your viewing pleasure, choose the available DVD/VCR combo with remote. The 130-watt inverter provides 110-volt power when shoreline or generator power is not available. (Options noted above are not available on the 22E and 22R.) All models in the Minnie lineup are digital satellite system ready. So you can choose it now or add it later.



This radio's a "wow."

The RV Radio features large control knobs, easy-to-operate buttons, an AM/FM stereo cassette/CD player and a built-in weather band. Its large control knobs and buttons are easy to operate. And you can run it from the house batteries by flipping the radio power switch. (Standard on Ford models only.)



The seat of power.

Minnie's cab features high-back, fixed lumbar support, Stitchcraft cab seats with a multi-adjustable recline mechanism and an available leather upgrade. The conveniently positioned controls include standard power windows and door locks. The center console features oversized cupholders and a large storage compartment. Its sleek design provides easy access to the living area. Driver and passenger-side airbags are standard. A brushed pewter dash appliqué is available on the Ford chassis.



Tow with ease.

The 5,000-lb. capacity and 350-lb. tongue weight hitch comes standard on the Minnie.†



Clear and dry.

Minnie's built-in rain gutters channel water to the front and rear of the coach, away from windows and doors.



Before you come inside.

Turn on the lighted water pump switch located inside the available exterior wash station and cleanups are a snap. Includes a second showerhead holder on the door.



Get the dish.

Expand your viewing options with the Minnie's available built-in TV satellite dish. Pre-wiring for the dish and elevation sensor comes standard.



Sound idea.

Minnie has an available exterior entertainment center that includes AM/FM stereo with antenna, CD player, 12-volt DC receptacle, TV jack, 110-volt outlet and speakers. Compartment locks securely.



Everything is A-OK.

Quickly check vital functions like tank levels, LP gas and battery power at a glance with Minnie's flush-mounted monitor panel, conveniently located in the galley.



Look here.

Minnie's exterior mirrors feature flat glass and convex corner mirrors for a wide field of vision. The available electric remote with defrost makes adjustments easy. A dual breakaway design allows the mirror arms to easily swivel for storage or added clearance.



The power's in your hands.

The available 4,000-watt Onan® MicroQuiet™ generator creates quiet, efficient power. It supplies 110-volt electricity when shoreline power isn't possible. A large-capacity 45-amp. electronic converter/charger is standard, providing improved battery charging, 12-volt DC output and quieter operation. A 3,600-watt Onan MicroQuiet generator is available with the diesel engine option on the 24F.



You can take it with you.

The slideout system found on the Minnie 24F, 29B, 31C and the new 32G uses the first electric-powered slideout system to meet our stringent quality and performance standards. It features electronic synchronization, which improves room movement and provides for better sealing, along with built-in diagnostics for easier service. The Minnie 31C and 32G also include the StoreMore® slideout system, which is a Winnebago Industries original and is the industry's premium slideout system. StoreMore allows the large storage compartments that accommodate oversized and odd-shaped items to extend with the slideroom for easy access.



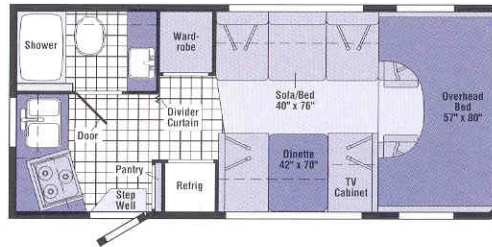
Made to go the extra miles.

Minnie's one-piece fiberglass sidewall is amazingly tough. Also available: an awning to keep you dry and stainless steel wheel liners to resist corrosion over the long haul. Step into and out of Minnie with ease, thanks to great-looking running boards of corrosion-resistant aluminum. Choose the available auxiliary rear air springs with remote air valves and adjust your Minnie for the perfect ride (available on the 29B, 31C and 32G).

FLOORPLANS

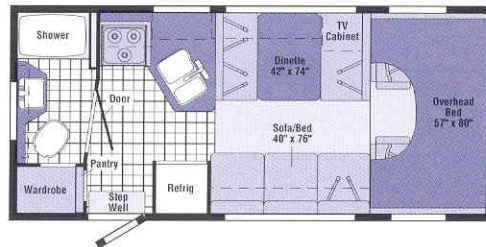
INTERIORS

Model 22E

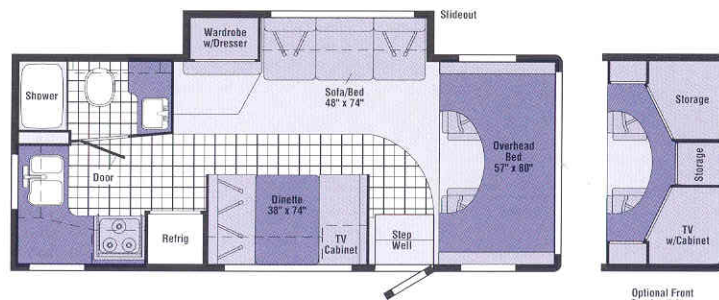


Blue Danube

Model 22R

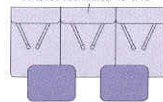


Model 24F

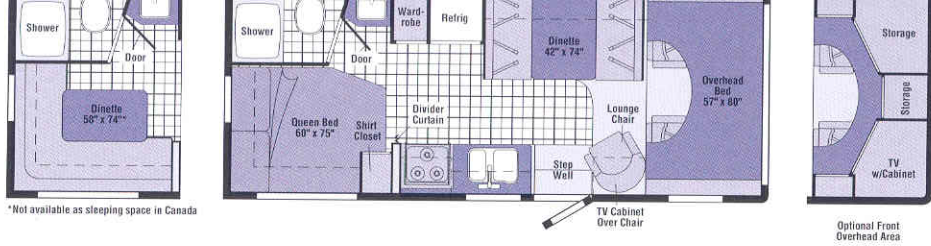


Sagebrush

Sofa/Bed w/2 Tables 48" x 76"

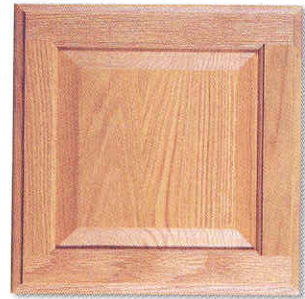
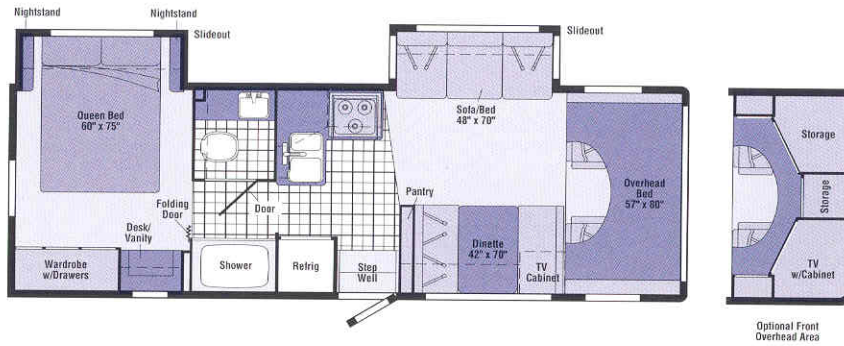


Model 24V



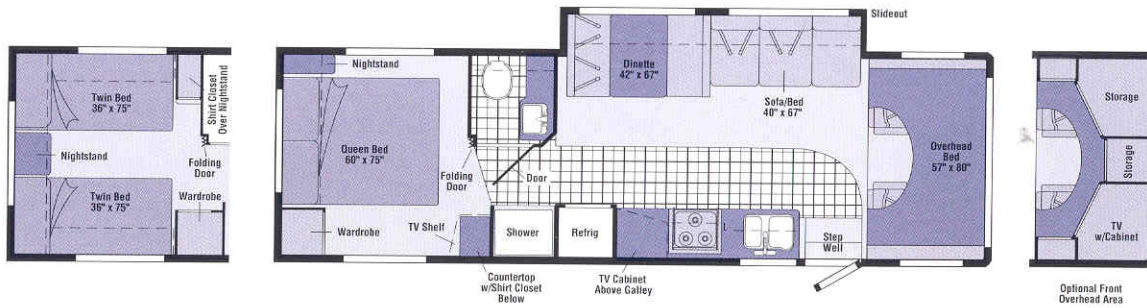
Sand Frost

Model 29B

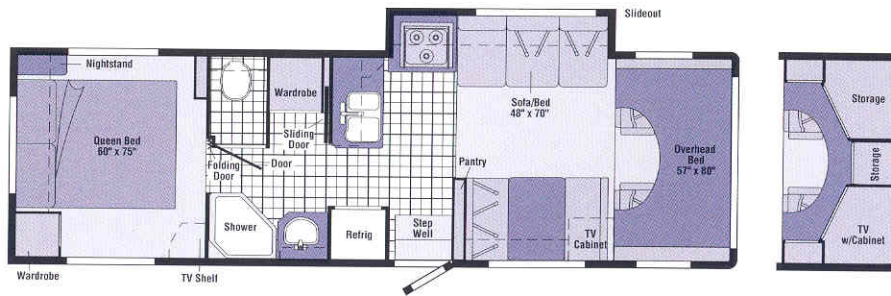


Portsmouth Oak

Model 31C



Model 32G



Note: Dimensions shown are for sleeping space only and may vary due to styling differences. Dashed lines denote overhead storage areas.

2004 Winnebago Minnie® Specifications

	22E	22R	24F	24V	29B	31C	32G
Length – Ford/Chev	22'1"/23'0"	22'1"/23'0"	24'7"/25'6'	24'7"/25'6'	29'4"/NA	31'4"/NA	32'1"/NA
Exterior Height ^a w/A/C – Ford/Chev	11'11'3"	11'2"/11'3"	11'2"/11'2"	11'11'3"	11'2"/11'2"	11'3"/11'3"	11'4"/11'4"
Exterior Width ^b	8'5.5"	8'5.5"	8'5.5"	8'5.5"	8'5.5"	8'5.5"	8'5.5"
Exterior Storage ^c (cu. ft.)	11.2	16.1	33.9	38	52.3	39.6	45.5
Interior Height	6'8"	6'8"	6'8"	6'8"	6'8"	6'8"	6'8"
Interior Width	8'	8'	8'	8'	8'	8'	8'
Fresh Water Capacity w/Heater ^d (gal.)	36	36	39	46	42	37	37
Holding Tank Capacity – Black/Gray (gal.)	30/36	36/30	37/35	37/35	25/31	34/32	25/31
LP Capacity ^e (gal.)	18	18	18	18	18	18	18
Fuel Capacity – Ford/Chev (gal.)	37/35	37/35	55/55	55/55	55/NA	55/NA	55/NA
GCWR – Ford/Ford Diesel ^f //Chev (lbs.)	18,500/NA//16,000	18,500/NA//16,000	20,000/20,000(CA)//20,000(FED)	18,500/20,000 •//16,000	20,000/NA//NA	20,000/NA//NA	20,000/NA//NA
GVWR – Ford/Ford Diesel//Chev (lbs.)	10,700/NA//12,300	10,700/NA//12,300	14,050/14,000(CA)14,050(FED)//12,300 ¹	11,500/14,050 •//12,300	14,050/NA//NA	14,050/NA//NA	14,050/NA//NA
GAWR – Front, Ford/Ford Diesel//Chev (lbs.)	4,600/NA//4,300	4,600/NA//4,300	4,600/4,600(CA)/4,600(FED)//4,300	4,600/4,600 •//4,300	4,600/NA//NA	4,600/NA//NA	4,600/NA//NA
GAWR – Rear, Ford/Ford Diesel//Chev (lbs.)	7,500/NA//8,600	7,500/NA//8,600	9,450/9,450(CA)/9,450(FED)//8,600	7,800/9,450 •//8,600	9,450/NA//NA	9,450/NA//NA	9,450/NA//NA
Wheelbase – Ford/Chev	138"/139"	138"/139"	158"/159"	158"/159"	190"/NA	220"/NA	215"/NA

* Ford 6.8L gas, diesel not available.

Standard - S Optional - O

AUTOMOTIVE/CHASSIS

	22E	22R	24F	24V	29B	31C	32G
Chassis – Ford® E450 6.8L Super-Duty V10 SOHC Triton® engine, 306-hp, automatic 4-speed overdrive transmission, 4-wheel anti-lock brakes, 130-amp. alternator, dual airbags		S	O	S	S	S	S
Chassis – Ford E350 6.8L Super-Duty V10 SOHC Triton engine, 306-hp, automatic 4-speed overdrive transmission, 4-wheel anti-lock brakes, 130-amp. alternator, dual airbags	S	S		S			
Chassis – Chevrolet® 6.0L V8 engine, 4L80-E transmission, 300-hp, 4-wheel anti-lock brakes, 145-amp. alternator, dual airbags	O	O	O	O			
Chassis ^d – Ford E450 6.0L Power Stroke® diesel engine, 235-hp, automatic 5-speed overdrive transmission, 4-wheel anti-lock brakes, 130-amp. alternator, dual airbags (Available January 2004)		O					
Air Springs auxiliary rear					O	O	O
Tire spare, Tire Tool wrench, Trailer Hitch 5,000-lbs. drawbar/350-lbs. maximum vertical tongue weight & wiring ^f	S	S	S	S	S	S	S
Wheel Covers stainless steel							
Wheel Liners stainless steel	O	O	O	O	O	O	O

CAB AREA & DRIVER CONVENIENCES

Beverage Holder, Cab Seats (Fabric) w/3-point adjustable seat belts, armrest, lumbar support, multi-adjustable slide/recline, Cigarette Lighter/12-Volt Domelight, Powerpoint, Cruise Control, Curtain cab divider & bunk privacy, ^d Floor Mats rubber driver & passenger, Hood Release, Power Door Locks & Windows	S	S	S	S	S	S	S
Steering Wheel tilt w/power assist, Sunvisors (2), Trim Panels driver & passenger doors (chassis supplied)	S	S	S	S	S	S	S
Cab Seats leather insert w/vinyl surround	O	O	O	O	O	O	O
Instrument Panel Appliqués Ford	O	O	O	O	O	O	O

ENTERTAINMENT

(Cab) AM/FM stereo/radio cassette/CD w/weather band, speakers (4), Ford, Radio Power Switch main/auxiliary, Satellite System Ready, TV Enhancement Package antenna (amplified), 12-volt powerpoint(s), interior jack(s), coax wiring, cable input	S	S	S	S	S	S	S
--	---	---	---	---	---	---	---

22E 22R 24F 24V 29B 31C 32G

Range Hood ductless w/light & fan		S					
Range Hood vented w/light & fan		S	S	S	S	S	S
Water Purification System	O	O	O	O	O	O	O
BATH							
Cabinet (lavatory, Cabinet medicine, Faucet (lavatory) dual-control, Faucet (shower) dual-control w/flexible showerhead, Roof Vent power, Shower light & skylight, Tissue Holder, Toilet w/foot-pedal flush, Towel Rack 3-rod, mounted to door	S	S	S	S	S	S	S
Mirror	S		S		S	S	
Roof Vent ^d powered ventilator fan	O	O	O	O	O	O	O
Shower Door folding	S	S	S	S	S	S	S
Shower Door glass					O	O	S
Sink oval							S
Sink rectangular w/molded soap dishes	S	S	S	S	S	S	S
Towel Bar	S		S	S	S	S	S
Towel Ring	S	S	S	S	S	S	S
Clothes Rod removable	S	S	S	S	S	S	S

BEDROOM

Bed queen w/underbed storage				S	S	S	S
Beds ^d twin, w/underbed storage						O	
Beds pread pillow shams, pillows				S	S	S	S
Lights decorative wall lamp(s)					S	S	S
Nightstand(s) w/drawer(s)					S	S	S
Roof Vent nonpowered						S	S
Shirt Closet				S		S	
Vanity Cabinet w/flip-up countertop, folding chair						S	
Wardrobe Cabinet(s) drawers						S	S

Radio (Cab) AM/FM stereo CD, speakers (4), Chevrolet	S	S	S	S				
Entertainment Center (Exterior) w/CD Player remote, DC receptacle, AC duplex receptacle, AM/FM radio w/CD player, TV jack, radio antenna, removable TV table, speakers (2), lockable compartment	0	0	0	0	0	0	0	0
Radios (4) two way, docking port w/charger	0	0	0	0	0	0	0	0
Satellite Dish Antenna RV digital, elevation sensing unit	0	0	0	0	0	0	0	0
TV 13" Color 12-Volt & VCP^d w/remotes, front lounge/dinette area w/slide/swivel shelf, Audiovox [®]	0	0	0	0	0	0		0
TV 19" Color AC Stereo w/remote, video selection system, galley overhead cabinet; ^d RCA [®]								0
TV 25" Stereo Color AC^d w/remote, video selection system, includes front overhead entertainment center, Samsung [®]			0	0	0	0	0	0
DVD/VCR stereo combo w/remote ^d		0	0	0	0	0	0	0

INTERIOR

Bunk front overhead w/mattress, sliding side windows, privacy curtain, storage cabinet, Ceiling fabric, Cupholder(s) , Lights ceiling, incandescent w/wall switches; ^d Roof Vent nonpowered, front overhead bunk; ^d Shades pleated, day/night (lounge, dinette, bedroom), mini blinds (bath, galley)	S	S	S	S	S	S	S	S
Bunk Ladder			S				S	
Bunk Window front; ^d delete	0	0	0	0	0	0	0	0
Mirror lounge			S				S	
Roof Vent nonpowered, lounge			S	S	S			S
Wardrobe Cabinet carpeted shelf, clothes rod, mirrored door(s)	S	S	S	S				S
Windows dual-glazed/thermo-insulated	0	0	0	0	0	0	0	0

CABINERY

Portsmouth Oak stile-and-rail construction w/raised panel inserts on upper doors	S	S	S	S	S	S	S	S
---	---	---	---	---	---	---	---	---

COUNTERTOPS

Laminate w/T-mold edge	S	S	S	S	S	S	S	S
-------------------------------	---	---	---	---	---	---	---	---

FLOORCOVERING

Carpeting w/pad, Vinyl bath & galley	S	S	S	S	S	S	S	S
--	---	---	---	---	---	---	---	---

FURNITURE

Dinette access to storage below, Stitchcraft	S	S	S	S	S	S	S	S
Dinette (Rear) ^d L-shaped, Stitchcraft			0					
Lounge Chair w/swivel/slide, Stitchcraft			S					
Sofa , Stitchcraft	S	S	S		S	S	S	
Sofa w/2 pedestal tables, Stitchcraft				0				

GALLEY

Faucet single-control, Microwave Oven Samsung, Range three-burner w/oven, Magic Chef, Refrigerator/Freezer double-door, Norcold [®] Sink recessed, molded, double w/sink cover (countertop material), Wall Border	S	S	S	S	S	S	S	S
Countertop flip-up extension				S	S	S	S	
Galley Rail countertop material		S						
Pantry	S	S		S				S

- a The height of each model is based on the curb weight of a typically equipped unit on the standard chassis. The actual height of your vehicle may vary by as much as 2" depending on chassis or equipment variations.
- b Minnie floorplans feature a wide-body design—over 96." In making your purchase decision, you should be aware that some states restrict access on some or all state roads to 96" in body width. Before making your purchase decision, you should confirm the road usage laws in the states of interest to you.
- c Your motor home's load capacity is designated by weight, not by volume, so you cannot necessarily use all available space when loading your motor home.
- d Not all items available in combination. See dealer for details.
- e Capacities shown are tank manufacturer's listed water capacity (W.C.). Actual filled LP capacity is 80% of listing due to overfilling prevention device on tank.

Awning w/rail gutters, Door entrance w/separate screen door, deadbolt lock, Entrance Door Step(s) manual, Ladder , Light porch w/interior switch, Mirrors manual adjust w/convex, Mudflaps rear, Receptacle AC duplex, Running Boards aluminum, Sidewall Skin one-piece smooth fiberglass, Storage Compartments w/trunk liner	S	S	S	S	S	S	S	S
Awning patio, vinyl, Entrance Door Step(s) electric w/doorjamb switch, Mirrors electric remote w/defrost	0	0	0	0	0	0	0	0

SYSTEMS

Auxiliary Start Circuit, Battery (Coach) Group 24 deep cycle, Battery (Coach) disconnect system, Battery Charge Control automatic dual, Drain 1" water tank, Electrical Distribution System DC fuses, AC breakers, 45-amp. electronic converter/charger, Generator Prep Kit, Monitor Panel wall-mount, battery condition gauge, generator hourmeter gauge; ^d generator start/stop switch; ^d holding tank levels, LP tank level, water heater light(s), water heater switch, water pump switch, water tank level, Power Cord 30-amp. 25', Sewer Hose 10', Tank LP, permanent mount w/gauge, Water Heater 6-gallon electronic ignition, LP gas, Water System Winterization Package water heater bypass valve & siphon tube, Water Hookup city, Water Pump demand, Water Tank Fill w/locking door	S	S	S	S	S	S	S	S
Air Conditioner (Roof) 13,500 BTU, ceiling-ducted w/wall thermostat	S	S	S	S				
Air Conditioner (Roof) 14,800 BTU, ceiling-ducted w/wall thermostat						S	S	S
Heat Pump w/roof A/C	0	0	0	0	0	0	0	0
Batteries (Coach) (2) Group 24 deep cycle	0	0	0	0	0	0	0	0
Drainage System ^d heated, electric, 1 heat pad per tank, pipe wraps & lighted on/off switch next to monitor panel	0	0	0	0	0	0	0	0
Furnace 25,000 BTU, low profile	S	S	S	S				
Furnace 30,000 BTU, low profile					S	S	S	
Generator ^d 3,600-watt, Onan MicroQuiet, LP					0			
Generator ^d 4,000-watt, Onan MicroQuiet, gas	0	0	0	0	0	0	0	0
Inverter ^d DC/AC, 130-watt			0	0	0	0	0	0
Wash Station exterior, w/pump switch	0	0	0	0	0	0	0	0

SLIDEOUT

Slideout Room front sofa/wardrobe w/slidoor cover						S		
Slideout Room front sofa w/slidoor cover							S	
Slideout Room rear bed w/slidoor cover								S
STORE MORE Slideout Room front dining/lounge w/slidoor cover								S
STORE MORE Slideout Room sofa/range w/slidoor cover								S

SAFETY

Airbags driver & passenger, Assist Handle exterior, Assist Strap interior, Brake Light high mount, Bumpers front & rear, Detectors/Alarms LP leak, smoke, carbon monoxide, Fire Extinguisher 10 B.C., Ground Fault Interrupter , Light center high-mount stop lamp, Light(s) courtesy w/wall switch(es), Seat Belts cab, 3-point, Seat Belts lap (in selected areas)	S	S	S	S	S	S	S	S
Window escape					S	S	S	S

WARRANTY⁹

12-month/15,000-mile basic limited warranty,	S	S	S	S	S	S	S	S
36-month/36,000-mile warranty on structure,¹								
10-year limited parts & labor warranty on roof skin								

- f Actual towing capacity is dependent on your particular loading and towing circumstances, which includes GVWR, GAWR and GCWR, as well as adequate trailer brakes. Please refer to your vehicle's operator's manual for further towing information.
- g See separate chassis warranty details provided in owner's packet.
- h See your dealer for complete warranty information.
- i The 24F optional diesel with California emissions is a 14,000 GVWR.
- j Measurements are based on the most recent information available. See your dealer for updated specifications.
- NA Not Available
- Winnebago Industries' continuing program of product improvement makes specifications, equipment, model availability and prices subject to change without notice. Comparisons to other motor homes are based on the most recent information available.

Not all motor homes are created equal.

As you take a closer look, you'll see that there is much more to the Winnebago Minnie than a long list of standard features and compelling floorplans. Beneath it all you'll find a SuperStructure® foundation of strength and durability, and Winnebago Industries' recognized service and warranty support.



We are committed to service.

We back our motor homes with the best after-the-sale service in the industry.

- 12-month/15,000-mile basic limited warranty
- 36-month/36,000-mile warranty on structure
- Standard 10-year limited parts-and-labor roof skin warranty
- Complimentary 24-hour Roadside Assistance Program
- TripSaver Fast Track Parts. TripSaver guarantees that in-stock warranty parts ship directly to your dealer within 24 hours
- Nationwide dealer service network



Certified quality.

Recreation Vehicle Dealer Association members annually rate RV manufacturers on the quality of their products, and on their sales and service support. Winnebago Industries has achieved the coveted Quality Circle Award every year since its inception, the only major motor home manufacturer to do so.

Learn more about what sets Winnebago Industries apart.

Ask your dealer for this guide. It will help you learn what makes Winnebago Industries motor homes distinctly superior to other brands.

Warning: Joining WIT has been known to cause excessive fun.

Winnebago-Itasca Travelers (WIT) is a club for owners of Winnebago Industries motor homes. WIT is a great way to meet people and offers you:

- Caravans and rallies
- Local and state group activities
- Benefits for RVers



WINNEBAGO Built proudly by
WINNEBAGO
INDUSTRIES

©2003 Winnebago Industries, Inc., Forest City, IA 50436. Printed in USA.

Seat belts are your most important hookup. Always buckle up.

NYSE listing: WGO

Visit us at www.winnebagoind.com

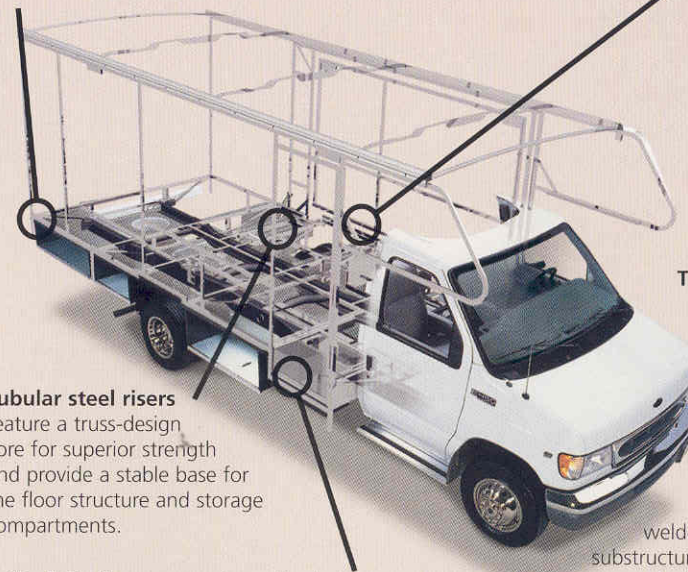
SUPER STRUCTURE

is the term given to Winnebago Industries' structural motor home design and construction. Rather than a single component, it is the culmination of design integration that incorporates steel and aluminum substructures; welded tubular steel floor risers; interlocking joint technology; and Thermo-Panel® floor, roof and sidewalls to form a high-strength, durable vehicle body.

Interlocking joint construction utilizes advanced extruded aluminum structural components to create integrated floor-to-sidewall and sidewall-to-roof joints. This design effectively distributes the weight of the walls and roof, making a stronger and more durable body than competitor designs that rely on screws to carry the weight.



The foundation substructure assembly is precision-aligned to maximize strength and cross-coach support as well as durability.



Tubular steel risers feature a truss-design core for superior strength and provide a stable base for the floor structure and storage compartments.

Critical steel components are treated using an advanced electrodeposition coating process that provides superior corrosion protection.

The sidewalls are the result of Winnebago Industries invention and perfection of Thermo-Panel manufacturing. Their composite construction combines a durable exterior panel with welded aluminum support substructures. The substructures are embedded in a high-density block foam insulation core to create a strong, durable, yet lightweight sidewall.



One-year-old competitor's rubber roof



One-year-old Winnebago Industries fiberglass roof

Built to a higher standard.

The Minnie features a crowned, one-piece fiberglass roof skin backed with a 10-year limited parts-and-labor warranty. Fiberglass offers superior strength, attractiveness and durability over rubber roofs found on many competitive models. Over time, rubber roofs are susceptible to chalking, streaking and degradation, and have less puncture and tear resistance than fiberglass.