

2012

# Adventurer












SMARTSPACE



37F Travertine with Honey Cherry

## Let it Begin



Get ready for the adventure of a lifetime. The 2012 Winnebago Adventurer® offers three excellent floorplans with a host of standard features and available options that let you create the motor home that perfectly fits your style.

Multiple slideouts give you plenty of space, including full-wall slides in all three models. Add to that a plush and welcoming lounge area sporting the BenchMark® full-comfort dinette or U-shaped dinette (32H) and a cozy sofa, flanked by a full-featured kitchen. It's a great place to enjoy the large LCD TV.

The Adventurer's redesigned front end and rear cap lend it a redefined profile, and the electric

patio awning now includes a protective metal wrap and WeatherMax™ fabric for even more long-lasting beauty.

2012 also introduces several enhancements to our already exceptional cab: new instrument panel, convenience tray, trim panels, and a redesigned passenger seat workstation. Both driver and passenger windows feature light-filtering shades to provide additional light and privacy control at the campsite.

Winnebago Industries' proud heritage of quality, luxury, and value are exemplified in 2012's Class A beauty, the Adventurer.

### Why Adventurer?

- Full-wall slideout on all models
- TrueAir® Maximum Comfort A/C
- RV Radio®/rearview monitor system
- Swivel Ultraleather™ cab seats
- MCD American® roller shades
- Corian® countertops
- Master bath (37F)
- Walk-around queen bed on all models
- Available king bed (35P and 37F)
- Hydraulic leveling jacks
- Stylized aluminum wheels



**Recognized Quality** The RV Dealers Association bestows its annual Quality Circle Award based on dealer ratings to the manufacturers that provide exceptional products, service and support. Only one manufacturer has received this honor for fifteen consecutive years: Winnebago Industries®.

35P Provence with Forest Cherry



## Just Like Home

Step up to the Corian countertops in the galley and you will be surrounded by a luxurious functional space to prepare meals in style. Storage abounds with our large pantry, and the residential-style cabinetry comes in three finishes. The three-burner range top and stainless steel microwave/convection oven take care of any cooking needs, or choose the three-burner range with oven for added culinary flexibility. A large two-door refrigerator/freezer comes standard. For even more cold storage, choose the available four-door refrigerator/freezer with ice maker, perfect for entertaining or extended travels.

Corian extends onto the bathroom countertops, with all models offering a mid-coach bathroom, and the 37F also sporting a full private master bath. The BIG Shower (37F) offers an unprecedented 36" x 36" of showering space! Looking for the convenience of in-home laundry? The available stackable washer and dryer (35P/37F) is a great addition.

Don't forget the exceptional MCD American Solo® blackout roller shades or available Duo® solar/blackout roller shades that offer both light and privacy control, all in a smoothly retracting shade.

You're always in control with the available automatic generator start system. It turns on the generator based on indoor temperature, battery voltage or a programmable time so you know your air conditioner will be running when you need it most. The OnePlace® systems center lets you monitor key systems from one location, and the PowerLine® energy management system helps prevent tripped campground circuit breakers.



**Multi-Tasking** An extendable dinette table and chairs with a removable leaf is available on the 35P and 37F. The BenchMark® dinette is a premium dining set, has easy flip-up storage and provides a comfortable bed when needed.



# Best in Class

See how Winnebago Industries takes motor home design and function to the next level, and why we've earned the right to be called the Most Recognized Name in Motor Homes.®



**Just Drive** The ergonomic dash, tilt steering and multi-adjustable Ultraleather™ cab seats enhance your driving experience. The *RV Radio* ups the fun factor with AM-FM, CD player and a 6.5" touch screen that incorporates the rearview monitor.



**Multi-Function** Check your e-mail, write letters or plan your route at the *Dash Workstation*.



**SmartSpace** Our SmartSpace™ design philosophy shines in the well-appointed galley. *Full-Extension Drawers* are sized to maximize storage and open wide on full-extension slides for easy access.



**Adaptability** It's a sofa, it's a lounge, it's a bed. It's the *Rest Easy® Multi-Position Lounge*. Just press a button and it glides from sofa to lounge to bed and back again.



**Let There Be Light** With our available smoothly retracting *MCD American Duo Solar/Blackout Roller Shades* you can control your light and privacy levels—no matter the time of day. *MCD Solo®* shades come standard.



**Keep it Cool** Any system can blow hot or cold air, but the *TrueAir® Maximum Comfort A/C* provides even temperature control throughout the coach. Innovative duct design, infinitely adjustable vents and high-efficiency units ensure you will bask in comfort no matter where you are.



**Outdoor Fun** Liven up the campsite by choosing the *Exterior Entertainment Center* with 32" LCD TV, CD/DVD player, AM/FM and two speakers in a lockable compartment.



**Stretch Out** Nothing feels better at the end of a long day than sinking into the *Euro Recliner* with built-in footrest (37P).



**Technology** Other motor homes have tank monitors with probes that can corrode; the *TrueLevel™ Tank Monitoring System* harnesses sonar technology to provide accurate readings every time.

**WINNEBAGO**  
GoWinnebago.com

GoWinnebago.com is your resource for web-exclusive content and all the details you can't fit in a brochure!





# Floorplans

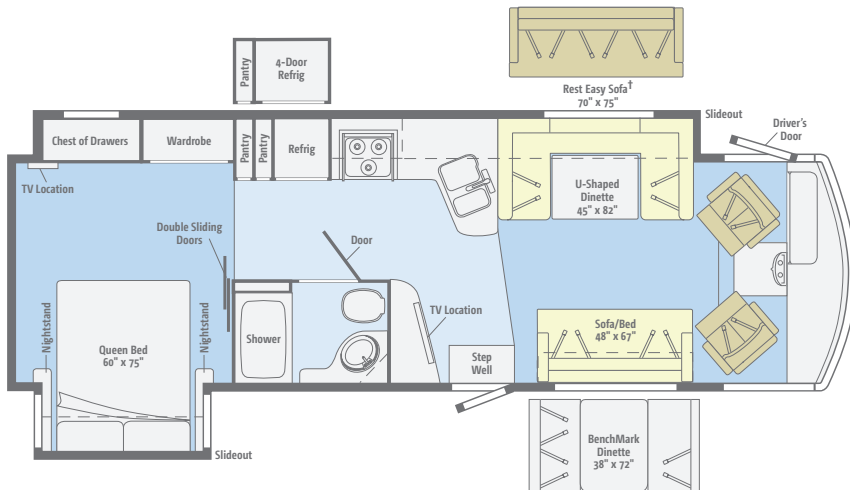
Dimensions shown are for sleeping space only and may vary due to styling differences. Dashed lines denote overhead storage areas. Floorplans and specifications are also available online at [GoWinnebago.com](http://GoWinnebago.com).

Standard  
Ultraleather

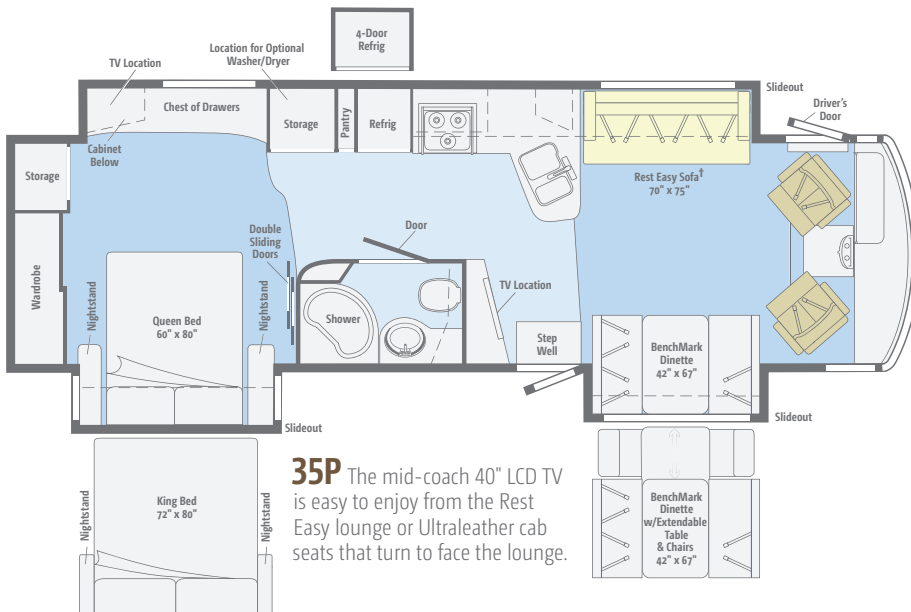
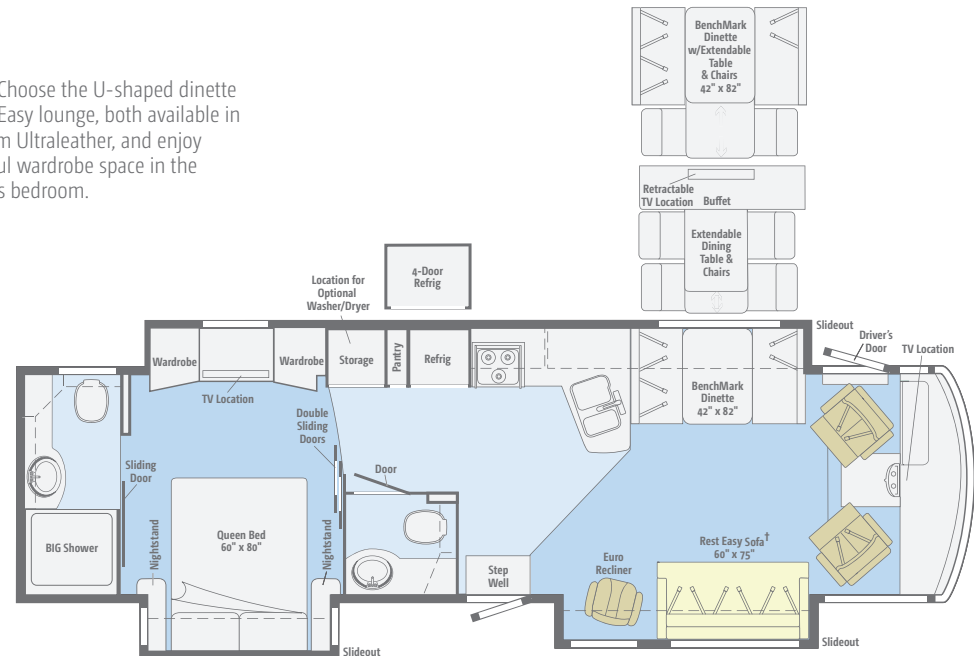
Optional  
Ultraleather

Carpet

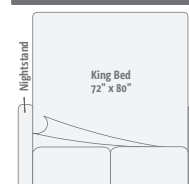
Vinyl



**32H** Choose the U-shaped dinette or Rest Easy lounge, both available in premium Ultraleather, and enjoy bountiful wardrobe space in the spacious bedroom.



**35P** The mid-coach 40" LCD TV is easy to enjoy from the Rest Easy lounge or Ultraleather cab seats that turn to face the lounge.



**37F** Take your pick of the BenchMark full-comfort dinette, buffet with extendable table and retractable 40" LCD TV or extendable dinette and chairs. Enjoy residential comfort with the mid-coach guest bath and private master bathroom.

† Available with single or dual controls. Dual-control option includes only two seat belts.

**WINNEBAGO**  
GoWinnebago.com

See your favorite motor homes come alive with virtual tours at [GoWinnebago.com](http://GoWinnebago.com).





# Specifications

## CHASSIS

**Ford® F53 22,000-lb. Chassis** 362-hp 6.8L V10 SEFI Triton® engine, TorqShift™ 5-speed automatic overdrive transmission w/tow haul, HydroMax brakes w/ABS, 175-amp. alternator (32H, 35P)

**Ford F53 24,000-lb. Chassis** (37F)

**Trailer Hitch®** 5,000-lb. drawbar/500-lb. maximum vertical tongue weight w/7-pin connector

**Stylized aluminum wheels**

**Hydraulic leveling jacks**

## OPTIONAL EQUIPMENT

**Ford F53 24,000-lb. Chassis** (35P)

## CAB CONVENIENCES

**RV Radio®/Rearview Monitor System** 6.5" LCD color touch screen, CD player, weather band, remote, iPod/MP3 input, rear color camera

**Chassis/house battery radio power switch**

**Cab Seats** adjustable armrests, lumbar support, multi-adjustable recline and swivel/slide

**6-way power-assist driver seat**

**Cab sound control package**

**Cruise control**

**12-volt powerpoints**

**Map lights**

**Power steering w/tilt wheel**

**Dash workstation**

**C.B. wire prep kit**

**Power mirrors w/defrost**

**MCD American Duo® powered front shade w/solar and blackout shades, privacy curtain for driver and passenger**

**Defroster fans**

**Sideview color video camera system**

**Light-filtering roller shades for driver and passenger windows**

## OPTIONAL EQUIPMENT

**Sirius® satellite radio, 6-month subscription included, iPod interface connector, receiver**

**Passenger seat w/footrest** (35P, 37F)

## INTERIOR

**32" LCD TV** (32H, 37F)

**40" LCD TV** (35P)

**Digital HDTV amplified antenna system**

**Home Theater Sound System** amplifier, DVD player, receiver, 5 speakers and subwoofer

**OnePlace® systems center**

**Satellite system ready, including bedroom TV**

**MCD American Solo® blackout roller shades** (lounge, dinette and bedroom)

**Tinted dual-glazed/thermo-insulated windows**

**Soft vinyl ceilings**

**Key-activated slideroom master lock switch**

**HD video selection system**

**Powered ventilator fan** (galley)

**Powered roof vent** (bath)

## OPTIONAL EQUIPMENT

**MCD American Duo® solar/blackout roller shades** (lounge, dinette and bedroom)

**Dining table/buffet/chairs w/retractable 40" LCD TV** (37F)

**RV digital satellite dish**

**King-Dome® automatic satellite dish**

**King-Dome HD-ready in-motion satellite dish**

**Pay-As-You-Go TV** Dish Network HD/DVR receiver (requires available automatic or in-motion satellite dish)

**Stackable washer/dryer** (35P, 37F)

**Vinyl tile front to bedroom** (slideouts, cab and bedroom areas are carpeted)

## GALLEY

**Corian® solid-surface countertop and backsplash**

**Sharp stainless steel microwave/convection oven w/range fan**

**Amana® 3-burner range top w/storage below**

**Corian sink and range covers**

**Norcold® refrigerator/freezer**

**Filtration system w/separate cold water faucet**

## OPTIONAL EQUIPMENT

**Amana 3-burner range w/oven**

**Norcold refrigerator/freezer w/icemaker**

**Norcold 4-door refrigerator/freezer w/icemaker**

## BATH

**Textured glass shower door**

**Flexible showerhead**

**Corian countertop**

**Skylight** (32H, 35P)

**Porcelain toilet**

**Water pump switch(es)**

## BEDROOM

**Powered queen bed w/Ideal Rest® digital comfort control mattress w/remotes** (37F)

**Queen bed w/innerspring mattress, storage below** (32H, 35P)

**19" LCD TV** (32H)

**26" LCD TV** (35P, 37F)

**DVD cable ready for bedroom TV** (35P, 37F)

**Bedspread, pillow shams and pillows**

## OPTIONAL EQUIPMENT

**King bed w/innerspring mattress and access to storage below** (35P)

**Queen Ideal Rest digital comfort control mattress w/remotes** (32H, 35P)

**King Ideal Rest digital comfort control mattress w/remotes** (35P)

**Stereo System** AM/FM, CD/DVD player, alarm clock and iPod/MP3 input

**Powered king bed w/Ideal Rest digital comfort control mattress w/remotes** (37F)

**Ceiling fan**

## EXTERIOR

**Driver's side service light**

**TriMark® KeyOne™ lock system**

**Porch light**

**Electric entrance steps**

**Ladder**

**Front and rear mud flaps**

**Electric patio awning w/metal wrap and Weather MAX™ fabric**

**Lower front protective mask**

## OPTIONAL EQUIPMENT

**Exterior Entertainment Center** 32" LCD TV, AM/FM stereo w/CD/DVD player and remotes

## HEATING & COOLING SYSTEM

**35,000 BTU low-profile furnace** (32H)

**40,000 BTU two-speed, low-profile furnace** (35P, 37F)

**TrueAir® Maximum Comfort A/C** two 13,500 BTU, low-profile roof air conditioners w/heat pumps

## ELECTRICAL SYSTEM

**AC/DC distribution system**

**55-amp. converter/charger**

**Service Center** cable TV input, 50 amp. power cord, QuickPort hatch, portable satellite dish hookup

**Exterior AC duplex receptacle**

**Exterior antenna jack**

**5,500-watt Cummins Onan® Marquis Gold™ generator**

**PowerLine® energy management system**

**Auxiliary start circuit**

**Two deep-cycle Group 31 batteries**

**Battery disconnect systems** (coach and chassis)

**Automatic dual-battery charge control**

**Generator/shoreline automatic changeover switch**

**10-watt solar panel battery charger**

## OPTIONAL EQUIPMENT

**1,000-watt inverter w/remote panel**

**Cummins Onan Energy Command™ automatic generator start system**

## PLUMBING SYSTEM

**Service Center** QuickPort hatch, exterior wash station w/pump switch, pressurized city water hookup w/diverter valve, drainage valves, 10' sewer hose, black tank flushing system

**LP Tank, permanent mount w/gauge**

**TrueLevel™ holding-tank monitoring system**

**On-demand water pump**

**Heated holding tank compartment**

**Winterization Package** water heater bypass valve and siphon tube

**10-gallon water heater, 110 V/LP gas w/motoraid and auxiliary auto heater**

## SAFETY

**Seat belts**

**Child seat tether anchor** (dinette) (35P)

**LP, smoke and carbon monoxide detectors**

**10 BC fire extinguisher**

**Ground fault interrupter**

**Fog lamps**

**High-mount brake lamps**

## WARRANTY<sup>7</sup>

**12-month/15,000-mile basic warranty<sup>8</sup>**

**36-month/36,000-mile limited warranty on structure<sup>8</sup>**

**10-year limited parts-and-labor warranty on roof skin<sup>8</sup>**

- <sup>1</sup> The height of each model is measured to the top of the tallest standard feature and is based on the curb weight of a typically equipped unit. The actual height of your vehicle may vary by several inches depending on chassis or equipment variations. Please contact your dealer for further information.
- <sup>2</sup> Adventurer floorplans feature a wide-body design – over 96" in making your purchase decision, you should be aware that some states restrict access on some or all state roads to 96" in body width. Before making your purchase decision, you should confirm the road usage laws in the states of interest to you.
- <sup>3</sup> The load capacity of your motor home is designated by weight, not by volume, so you cannot necessarily use all available space when loading your motor home.
- <sup>4</sup> Capacities are based on measurements prior to tank installation. Slight capacity variations can result due to installation applications.
- <sup>5</sup> Capacities shown are tank manufacturer's listed water capacity (WC). Actual filled LP capacity is 80% of listing due to overfilling prevention device on tank.
- <sup>6</sup> Actual towing capacity is dependent on your particular loading and towing circumstances which includes the GVWR, GAWR, and GCWR as well as adequate trailer brakes. Please refer to the Operator's Manual of your vehicle for further towing information.
- <sup>7</sup> See separate chassis warranty.
- <sup>8</sup> See your dealer for complete warranty information.

NA Not Available

Not all items available in combination. See dealer for details.

Winnebago Industries® continuing program of product improvement makes specifications, equipment, model availability, and prices subject to change without notice. Comparisons to other motor homes are based on the most recent information available at printing.

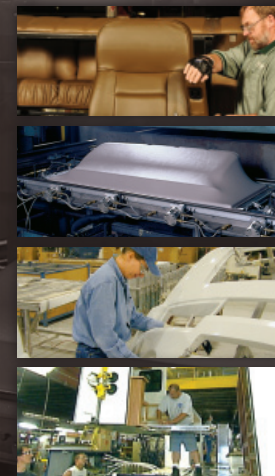


## Weights & Measures

	32H	35P	37F
Length	32'11"	35'6"	37'5"
Exterior Height <sup>1</sup>	12'8"	12'8"	12'8"
Exterior Width <sup>2</sup>	8'5.5"	8'5.5"	8'5.5"
Exterior Storage <sup>3</sup> (cu. ft.)	105.8	107.6	121.7
Awning Length	17'	17'	18'
Interior Height	7'	7'	7'
Interior Width	8'0.5"	8'0.5"	8'0.5"
Freshwater Capacity w/Heater <sup>4</sup> (gal.)	85	85	85
Holding Tank Capacity - Black/Gray <sup>4</sup> (gal.)	43/48	43/60	52/71
LP Capacity <sup>5</sup> (gal.)	23	28	28
Fuel Capacity (gal.)	80	80	80
GCWR <sup>6</sup> (lbs.)	26,000 <sup>A</sup>	26,000 <sup>A</sup> /30,000 <sup>B</sup>	30,000 <sup>B</sup>
GVWR (lbs.)	22,000 <sup>A</sup>	22,000 <sup>A</sup> /24,000 <sup>B</sup>	24,000 <sup>B</sup>
GAWR - Front (lbs.)	8,000 <sup>A</sup>	8,000 <sup>A</sup> /9,000 <sup>B</sup>	9,000 <sup>B</sup>
GAWR - Rear (lbs.)	15,000 <sup>A</sup>	15,000 <sup>A</sup> /15,500 <sup>B</sup>	15,500 <sup>B</sup>
Wheelbase	220"	228"	248"

A - Ford F53 22,000-lb. GVWR Chassis w/22.5" tires B - Ford F53 24,000-lb. GVWR Chassis w/22.5" tires

## Take a Tour



We're proud of our processes, state-of-the-art facilities and the people who make Winnebago Industries number one. We invite you to visit our complex in Forest City, Iowa, for a first-hand look at the dedication and technology behind every motor home we build.

# NO SHORTCUTS — NO COMPROMISES

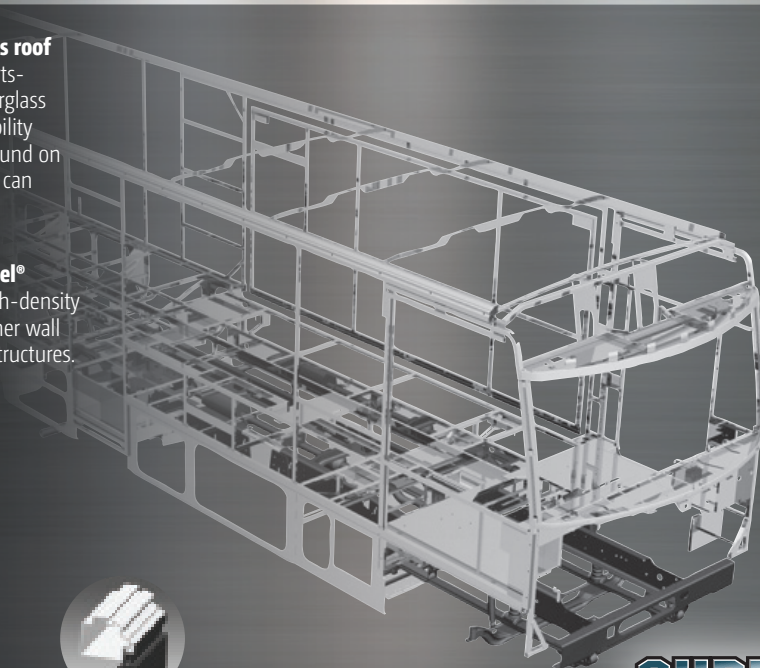
The crowned, one-piece **fiberglass roof** is backed by a 10-year limited parts-and-labor roof skin warranty. Fiberglass offers superior strength and durability over less attractive rubber roofs found on so many competitive models that can streak and degrade over time.

Durable, lightweight **Thermo-Panel® sidewalls** combine fiberglass, high-density block-foam insulation and the inner wall surface with aluminum support structures.

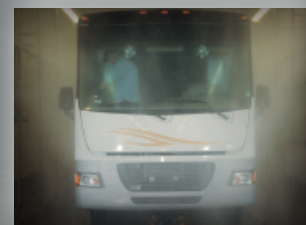
**Metal substructures** secure cabinets and appliances to add safety and stability.

An **electrodeposition coating** helps protect critical steel components.

Specially engineered **interlocking joints** connect the floor, sidewalls and roof into a cohesive unit.



**SUPER  
STRUCTURE**



You can compare features. You can compare styles. But when it comes to quality construction, there is **no comparison**. Only motor homes manufactured by Winnebago Industries harness the legendary strength and durability of our SuperStructure® construction process—a process we've been perfecting for more than 50 years.

SuperStructure means a solid framework, steel and aluminum substructures and components built in-house to our exacting standards. It means managing each detail to ensure the integrity and quality of every coach. It means barcoding parts to save time and frustration during service and running every coach through a high-pressure leak test before it leaves the factory.

Where other manufacturers cut corners, SuperStructure ensures the features you can't see are treated with the same care as the ones you can. When you buy a Winnebago motor home, you are getting a coach that is built for you—and built to last.



# Exteriors

# Décor



**Golden Almond**  
FULL-BODY PAINT



**Bronze**  
FULL-BODY PAINT



**Ebony**  
FULL-BODY PAINT



**Radiant**  
FULL-BODY PAINT

Choose from three fabric collections and three cabinet wood finishes, each with satin nickel hardware.

**Travertine** *Circles of whimsy highlight this warm palette in tones of gold and cream.*



Main

Marsh  
Ultraleather

Accent

Bedspread

Carpet

Sashay  
Wall Board

Cocoa Brown  
Corian  
Countertop

**Provence** *Timeless elegance with hints of soft color is at the heart of this fabric collection.*



Main

Surfside  
Ultraleather

Accent

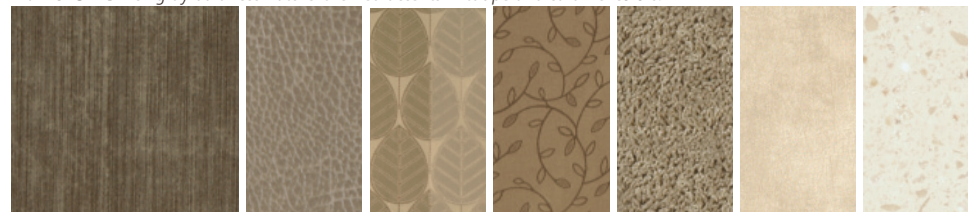
Bedspread

Carpet

Sashay  
Wall Board

Matterhorn  
Corian  
Countertop

**Hawthorne** *Rich gray balances nature-themed accents in taupe and caramel colors.*



Main

Putty  
Ultraleather

Accent

Bedspread

Carpet

Driftwood  
Wall Board

Cottage Lane  
Corian  
Countertop



Honey Cherry



Forest Cherry



Coffee-Glazed Vienna Maple

*Fabrics and carpets may change without notice or obligation.*





## Don't Miss Out

Caravans, rallies, local and state events, and exclusive RV travel benefits can all be yours as a WIT Club member – and you can meet like-minded folks that possess the same enthusiasm for traveling this great nation of ours. It's a wonderful way to make your Adventurer a way of life. Learn more about the Winnebago-Itasca Travelers Club at WITclub.com.



### Members enjoy:

- Caravans and Rallies
- Local and State Group Activities
- RV Travel Benefits



## Committed to Service

We back our motor homes with best-in-class support both before *and* after the sale:

- 12-month/15,000-mile basic limited warranty
- 36-month/36,000-mile warranty on structure
- 10-year standard limited parts-and-labor roof skin warranty
- Complimentary 24-hour roadside assistance program
  - RV Technical Assistance Hotline
  - RV Service Appointment Assistance
  - Emergency Trip Interruption
  - Emergency Message Service
  - Nationwide Trip Routing
  - Fee-Free Travelers Cheques

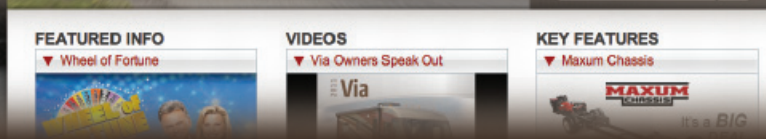


- TripSaver Fast Track Parts guarantees that in-stock warranty parts ship directly to your dealer within 24 hours
- National dealer service network



**WINNEBAGO**  
GoWinnebago.com

Visit us on the web for more information on all of our motor homes, the latest product updates and a host of web-exclusive content.



THE MOST RECOGNIZED  
NAME IN MOTOR HOMES™

NYSE: WGO

GoWinnebago.com



For Sales and Service Information Contact: