

06 SUNCRUISER®



 SMARTSPACE

THE BEST GETS BETTER.

Innovative designs. Seven distinct models. And more standard features than ever before. It's no wonder the Itasca SunCruiser is our best-selling Class A motor home. Every model is created with our SmartSpace™ design philosophy that encourages innovation to make the most of interior space,

including an impressive 7' 2" interior height. This is especially evident in the new 38T that features a forward-galley layout and an entertainment center with an available electric fireplace. If you want the best in Class A comfort and amenities, you'll find it in the 2006 Itasca SunCruiser.

START LIVING.

Bring the latest in home entertainment with you wherever you go. Suncruiser comes with a 27" Sony® flat-face TV, a DVD/VCR combo and Sony Home Theater Sound System that rivals high-end residential systems. An available in-motion digital satellite dish captures satellite programming while you're on the road. Add the 600-watt inverter and you'll have power even when you're not connected to a shoreline source or generator.

This year, the 38T joins the model lineup with more square feet of living space than ever before. The Home Comfort Plus Package comes standard on all models, providing an auxiliary automotive heater, insulated power roof vents and a heat pump that warms your coach without using the LP furnace.



ENTERTAINMENT CENTER

Four models feature a stand-alone entertainment center. Cozy up to the electric fireplace (available 38T) in the relaxing hoop-base reclining chair.



A



B



C

LOUNGE AS YOU PLEASE. Furniture options include the A) J-lounge with power recliner (38J, 38R only), B) Hoop-base lounge chair that can be moved to your favorite location when the coach is parked and the C) available Rest Easy® multi-position lounge that glides from a couch to a recliner to a comfortable bed at the touch of a button.



38T



FULL-EXTENSION DRAWER SLIDES Every drawer is 100% accessible.

AN INVITING GALLEY.

Stainless steel appliances accented with indirect lighting create a galley that is as stylish as it is functional. You can cook almost anything on the three-burner range or in the microwave/convection oven with range fan. Plus, plentiful cabinet and drawer storage with full-extension slides holds all your food and supplies. The refrigerator/freezer can be upgraded to a four-door model with an icemaker. A slideout pantry is standard.

Depending on the model you select, you'll be able to choose between a freestanding dining table, BenchMark™ dinette or the innovative multifunction table that doubles as a computer desk. There's a table to fit every lifestyle.



BenchMark™ This full comfort dinette features innerspring cushions, large, easy-to-use flip up storage compartments and a child safety-seat tether. It even converts easily into a comfortable bed (NA 38J, 38R).



DINING TABLE A freestanding table comes in a round or oval design, offering a more residential dining experience (Available 33V, 35A, 35U, 37B, 38T. Standard 38J, 38R).

A BETTER BEDROOM.

A standard slideout allows for a spacious bedroom with plentiful storage and a queen-size walk-around bed. And if you like to catch the news before bed, you'll appreciate the 20" flat-face TV in the bedroom (24" in the 37B). The TV is wired to the front video components, which can be operated by remote from the bedroom. A rear stereo system is also available, including AM/FM radio, CD player and alarm clock.

The bathroom has a spacious design that allows for more storage and an abundance of residential features. In the shower, you'll notice the temperature remains constant even if the water pressure fluctuates, thanks to the Moen Posi-Temp® valve.



BEDROOM VANITY AND TV



BATH

An available shower upgrade package provides a fold-down shower seat and a handheld showerhead.



WASHER/DRYER Do laundry in the comfort of your motor home when you add the washer/dryer combination (NA 33V, 35U).



SLEEP NUMBER BED The available Vantage Point Sleep Number® Bed by Select Comfort™ includes digital hand controls that let you quickly adjust the firmness of each side of the mattress to your Sleep Number — the Key to a Perfect Night's Sleep.™

DRIVE SAFELY.

Suncruiser puts you at ease behind the wheel with navigational features like the available rearview monitor with one-way audio and an electric compass with a built-in outdoor thermometer. You can also add a GPS system and the new video camera system that allows the driver to view both sides of the coach through the rearview video monitor.

The driver will also enjoy the convenience of available powered sunvisors, map lights and the RV Radio.[®] This popular stereo system includes AM/FM radio, CD player, weather band and two remotes: one mounted to the steering wheel and one handheld remote for use when parked. The radio is ready to be enhanced with Sirius[®] Satellite* radio, providing over 120 channels of digital programming with no signal fades. This option includes a complimentary six-month subscription.

*Sirius Satellite radio not available in Canada.



DASH Designed with ergonomic styling, the dash places controls right at your fingertips, including a steering wheel remote for the RV Radio.

TWO-WAY RADIOS Four available radios come housed in a built-in charging station and help you stay in touch around town.



WORKSTATION Great for a laptop computer and it slides forward to access the storage compartment.



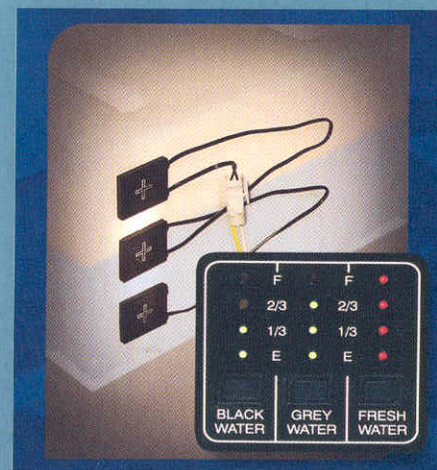
ONE PLACE[®] This complete systems center places frequently used switches, gauges and controls in one convenient location.



POWERLINE[®] This energy management system monitors electrical usage and automatically cycles appliances on and off to prevent power overloads.



TRUEAIR The TrueAir[™] residential central air conditioning system cools 40% faster and runs 10% quieter than roof airs. The key is a Coleman[®]-Mach[®] cooling unit located in the basement for a lower vehicle profile.



TRUELEVEL To eliminate the guesswork, our exclusive TrueLevel holding tank monitoring system incorporates Mirus[™]* detector cells that detect liquid levels from the outside of the tank. No internal probes mean no more corrosion or clogging, just accurate readings time after time.

*Mirus is a trademark of Material Sciences Corporation.

LOOK SHARP.

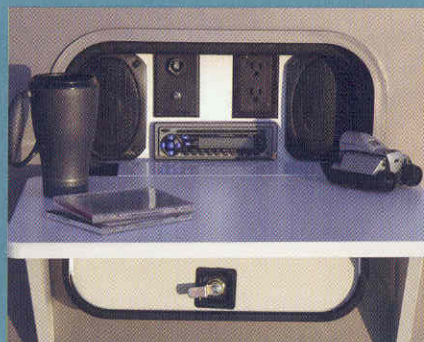
You'll turn some heads at the campsite when you pull in with an Itasca Suncruiser sporting one of the available full-body paint schemes and newly styled front and rear caps. If you want to bring a car along, the 5,000-lb. hitch with seven-pin wiring connector is up to the task. The side mirrors have a breakaway design that provides extra clearance at the campground or for storage.

Once you've settled on a spot, the hydraulic leveling jacks with available automatic controls will level your coach in seconds. You'll be relaxing beneath the awning in no time and protected from the sun by the available awning sunscreen.

Hookups are a snap in the service center featuring colored labels and the QuickPort® service connection hatch. QuickPort holds the hose and cords in place while allowing the bay door to fully close. The service center also contains a wash station, electrical center and a connection for a portable satellite system.



STOREMORE Exterior compartments extend with the slideroom for easy access to your belongings thanks to the StoreMore slideout system. New for 2006, enjoy increased height on storage compartment doors with gas struts that open effortlessly.



EXTERIOR ENTERTAINMENT CENTER Includes a CD player, AM/FM radio, two speakers, 12-volt powerpoint, 110-volt outlet, TV jack and a removable table.



SERVICE CENTER Spend less time hooking up your Suncruiser by using the QuickPort service connection hatch and QuickConnect® coupling valve. QuickConnect even includes its own holster for storage.



06 FLOORPLANS

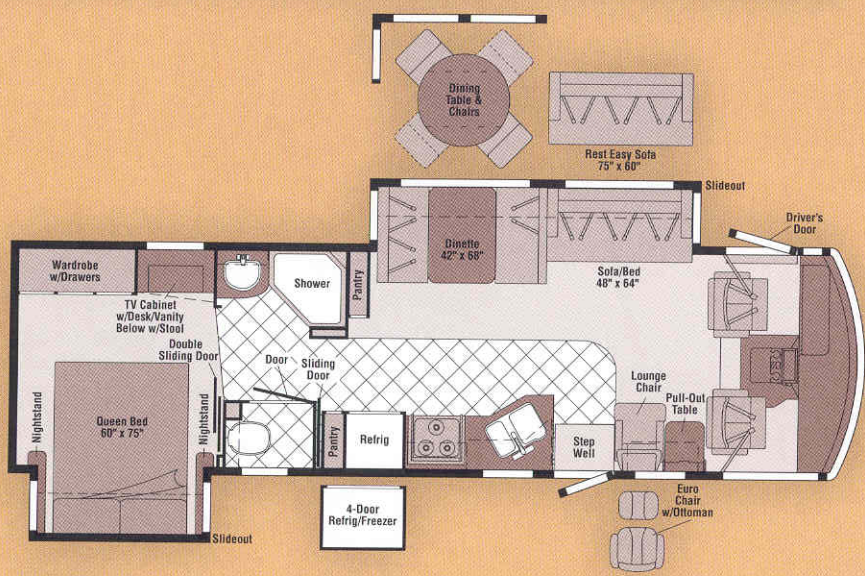


Vinyl Tile Floorcovering

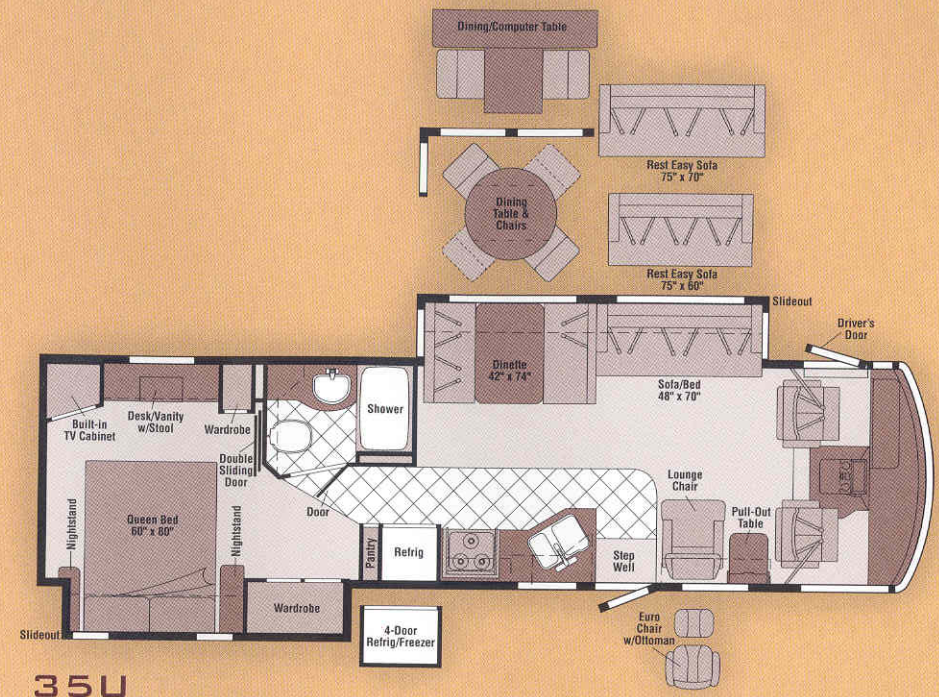


Seat Belts

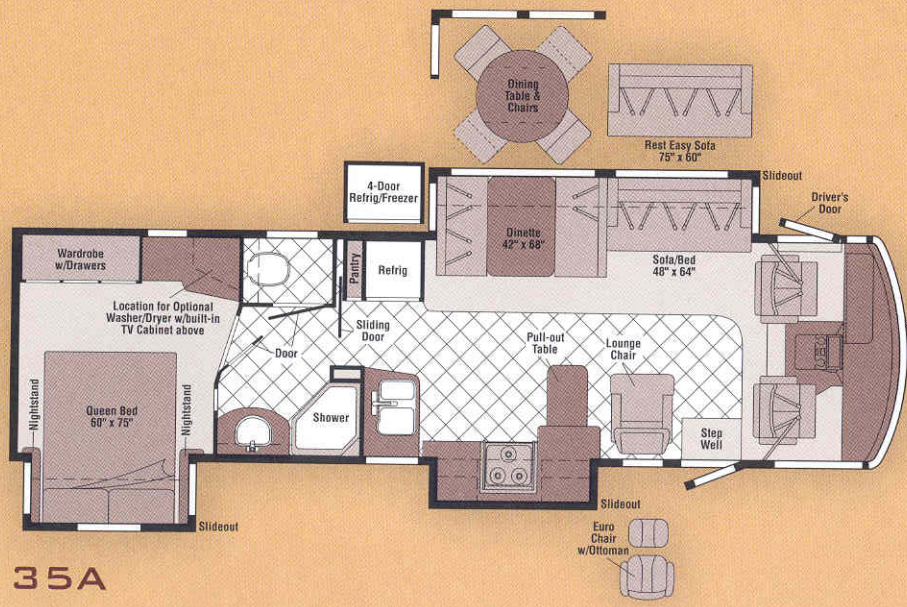
Note: Dimensions shown are for sleeping space only and may vary due to styling differences. Dashed lines denote overhead storage areas.



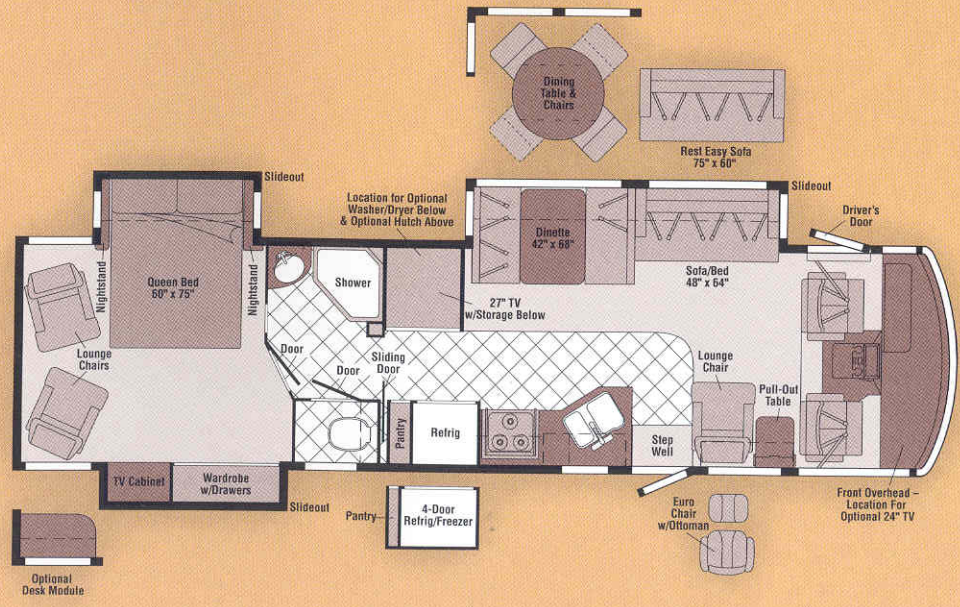
33V



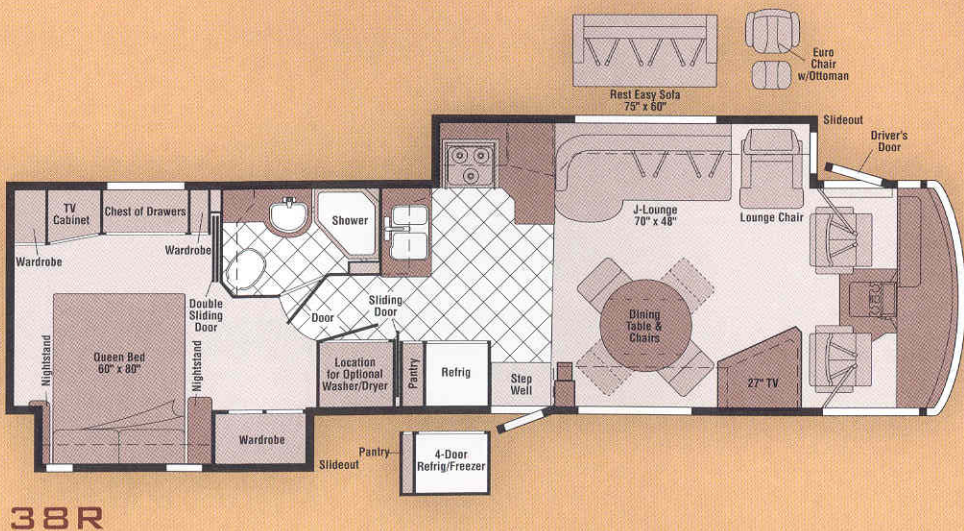
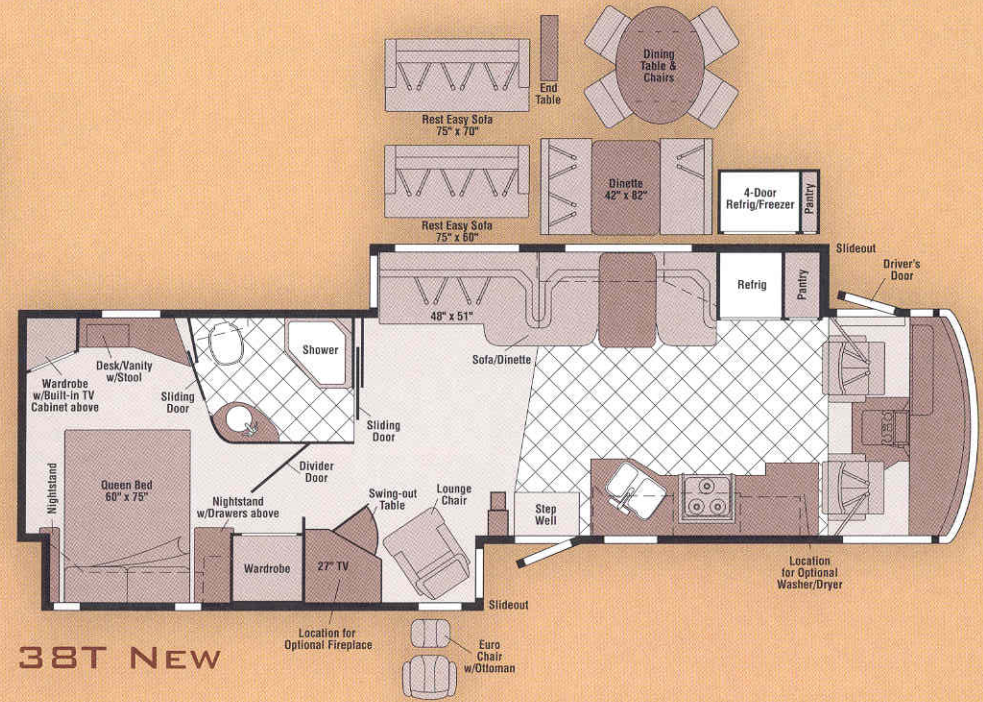
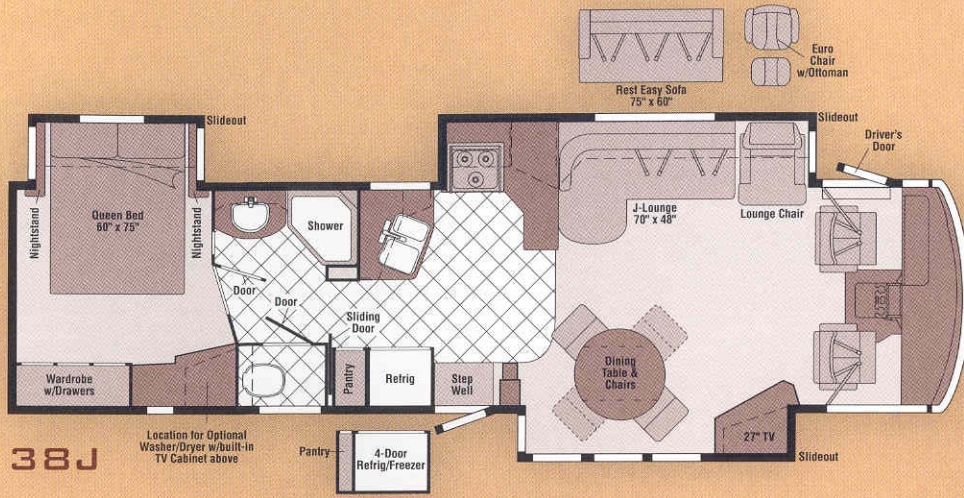
35U



35A



37B



06 SPECIFICATIONS

WEIGHTS & MEASURES	33V	35A	35U	37B	38J	38R	38T NEW
Length	33'8"	35'11"	35'8"	37'11"	38'10"	38'11"	38'11"
Exterior Height ¹	12'2"	12'2"	12'2"	12'1"	12'0"	12'0"	12'1"
Exterior Width ²	8'6"	8'6"	8'6"	8'6"	8'6"	8'6"	8'6"
Exterior Storage ³ (cu. ft.)	68.2	90	91	107.4	106.9	120	109.3
Interior Height	7'2"	7'2"	7'2"	7'2"	7'2"	7'2"	7'2"
Interior Width	8'1"	8'1"	8'1"	8'1"	8'1"	8'1"	8'1"
Freshwater Capacity w/Heater ¹ (gal.)	86	88	86	88	88	88	108
Holding Tank Cap. - Black/Gray ⁴ (gal.)	55/43	50/75	45/49	50/58	51/53	45/49	53/70
LP Capacity ⁵ (gal.)	28	28	28	28	28	28	28
Fuel Capacity (gal.)	75	75	75	75	75	75	75
GCWR ⁶ (lbs.)	26,000 [□] / 26,000 [□]	26,000 [■] / 26,000 [□] / 30,000 [●]	26,000 [■] / 26,000 [□]	30,000 [●]	30,000 [●]	30,000 [●]	30,000 [●]
GVWR (lbs.)	22,000 [■] / 22,000 [□]	22,000 [■] / 22,000 [□] / 24,000 [●]	22,000 [■] / 22,000 [□]	24,000 [●]	24,000 [●]	24,000 [●]	24,000 [●]
GAWR - Front (lbs.)	7,500 [■] / 8,500 [□]	7,500 [■] / 8,500 [□] / 9,000 [●]	7,500 [■] / 8,500 [□]	9,000 [●]	9,000 [●]	9,000 [●]	9,000 [●]
GAWR - Rear (lbs.)	14,500 [■] / 15,000 [□]	14,500 [■] / 15,000 [□] / 15,500 [●]	14,500 [■] / 15,000 [□]	15,500 [●]	15,500 [●]	15,500 [●]	15,500 [●]
Wheelbase	208"	228"	228"	248"	248"	248"	266"

■ = Chassis A □ = Chassis B ● = Chassis C

AUTOMOTIVE/CHASSIS	33V	35A	35U	37B	38J	38R	38T
Chassis A - Ford 6.8L Super-Duty V10 SOHC Triton [®] engine, 362-hp, TorqShift [™] 5-speed overdrive transmission, 130-amp. alternator, 4-wheel ABS, Tires 22.5", Wheels stylized aluminum	0	0	0				
Chassis B - Workhorse 8.1L Vortec V8, 340-hp, Allison [®] 1000 electronic overdrive transmission, 145-amp. alternator, 4-wheel ABS, Steering Wheel custom, Tires 22.5", Wheel Liners stainless steel	S	S	S				
Chassis C - Workhorse 8.1L Vortec V8, 340-hp, Allison 2100 MH electronic overdrive transmission, 145-amp. alternator, 4-wheel ABS, Steering Wheel custom, Tires 22.5", Wheel Liners stainless steel	0		S	S	S	S	S
Leveling Jacks HWH [®] hydraulic, manual touch pad w/chime, Tire Tools wrench, leverage bar, Trailer Hitch [®] 5,000-lb. drawbar/500 lbs. maximum vertical tongue weight & 7-pin wiring connector	S	S	S	S	S	S	S
Leveling Jacks HWH [®] hydraulic, automatic controls, Wheels stylized aluminum (Workhorse chassis)	0	0	0	0	0	0	0

CAB AREA & DRIVER CONVENIENCES	33V	35A	35U	37B	38J	38R	38T
Cab Seats (fabric) multiposition armrests, headrest, manually adj. lumbar support, multiadj. swivel/slide/recline, Cab Sound Control Package , Cigarette Lighter/12-volt DC Powerpoint , Compass electronic w/outdoor thermometer, Convenience Tray , Cruise Control , Door driver w/power window, assist bar, KeyOne [™] System (common key w/ entrance door & exterior storage compartments), trim panel w/beverage holder, storage pocket, switch appliqué, power mirror controls, Courtesy Light , Floor Mats carpet driver & passenger, Instrument Panel appliqué, Map Lights , Shades light-filtering, cab windows & front wraparound, Trim Panel passenger side w/beverage holder, storage, 12-volt DC powerpoint, Steering Wheel tilt w/power assist, Sunvisors (3) , Window (passenger) full-slider w/screen, dual-glazed/thermo-insulated, Windshield Wipers intermittent, Workstation in-dash	S	S	S	S	S	S	S

CAB AREA & DRIVER CONVENIENCES	33V	35A	35U	37B	38J	38R	38T
Cab Seats (UltraLeather HP [™]) manual adj. lumbar support, Cab Seat Pedestal 6-way power-assist (driver), Cab Seat Pedestal 6-way power-assist (driver & passenger), Defroster Fans (2) aux. 2-speed w/instrument panel switch, GPS Navigation System Alpine, Monitor System color rearview w/single camera & one-way audio, Sony [®] Sunvisors (2) powered, switch, Video Camera System 2 side-mounted cameras	0	0	0	0	0	0	0

ENTERTAINMENT	33V	35A	35U	37B	38J	38R	38T
CB Prep antenna, antenna lead, 12-volt DC powerpoint, Entertainment Center w/CD Player (exterior) DC receptacle, AC duplex receptacle, AM/FM radio w/remote, exterior antenna jack, TV jack, radio antenna, speakers (2), lockable compartment, removable table, Home Theater Sound System amplifier, DVD/VCR, receiver, speakers (5), subwoofer, Sony, RV Radio [®] (cab) AM/FM Stereo/CD player w/weather band, remotes (one handheld, one steering wheel-mounted), roof-mounted flexible rubber antenna, speakers (4), Sirius [®] Satellite ready, Radio Power Switch main/aux. battery, Satellite System Ready , Telephone input & interior jacks, TV Enhancement Package antenna (amplified), interior jacks, coax wiring, cable input, antenna check reminder light, Video Selection System	S	S	S	S	S	S	S
CB Cobra [®] Compact Multidisc Changer , Radios (4) 2-way docking port w/charger, Satellite Dish Antenna RV digital, elevation sensing unit, manual or power, Satellite System RV digital, in-motion, King-Dome [®] Satellite Radio Sirius (N/A in Canada, includes six-month subscription), Stereo System (rear) AM/FM/CD player, alarm clock	0	0	0	0	0	0	0
Entertainment Center TV 27" flat-face, stereo color AC w/remote, Sony				S	S	S	S
TV 20" flat-face, color AC w/remote, remote extender, bedroom, Sony	S	S	S		S	S	S
TV 24" flat-face, color AC w/remote, remote extender, bedroom, Sony				S			
TV 27" flat-face, stereo color AC w/remote, Sony	S	S	S	0			
TV 27" flat-face, stereo color AC w/remote, Sony & hutch cabinet				0			

INTERIOR	33V	35A	35U	37B	38J	38R	38T
Ceiling vinyl, Clock , Lights ceiling, incandescent, bath, bedroom w/wall switches, Light decorative oval, Lights fluorescent, recessed, galley, lounge, bath, hallway w/wall switches, Lights reading, Mini Blinds galley & bath, Shade Package roof vents, room darkening, insulated, Shades day/night pleated, lounge, dinette, bedroom, Windows flush-mounted, dual-glazed/thermo-insulated	S	S	S	S	S	S	S
Cupholder(s)						S	S
Fireplace electric							0
Light halogen (lounge)							S
Light wall lamp (lounge)						S	S
Mirror	S		S				
Picture framed		S			S	S	S

CABINERY	33V	35A	35U	37B	38J	38R	38T
Portsmouth Oak or Concert Cherry or Washed Maple or Sierra Maple stile-and-rail construction w/arched raised-panel inserts on upper doors	0	0	0	0	0	0	0

FLOORCOVERING	33V	35A	35U	37B	38J	38R	38T
Carpeting w/pad, Vinyl Tile bath, galley	S	S	S	S	S	S	S

FURNITURE	33V	35A	35U	37B	38J	38R	38T
Dining Table & Chairs (2) freestanding, (2) folding	0	0	0	0	S	S	0
BenchMark [™] full comfort dinette, access to storage below, child seat tether anchor	S	S	S	S			0
Lounge Chair (fabric) hoop-base, cabinet w/table, recliner, rocker, footrest	S		S	S			
Lounge Chair (UltraLeather HP) hoop-base, Rest Easy [®] dual-control multi-position lounge (fabric or UltraLeather HP) 75" x 60", Lounge Chair (UltraLeather HP) Euro chair w/ottoman	0	0	0	0	0	0	0
Lounge Chair (fabric) hoop-base, recliner, rocker, footrest	S				S	S	S
Multifunction Table & Chairs (2) freestanding, (2) folding	0						

LOWER VALANCE PAINT



Medium Titanium
Metallic



Granite
Metallic

FULL-BODY PAINT



Deep Forest



Vermillion

Welcome to Winnebago Industries, Inc.

http://www.winnegoiind.com/

WINNEBAGO INDUSTRIES

Company Products Lifestyle Resources Dealers Only

Home About us Investor Relations For Media Career Contact Us Visit Us

Welcome to Winnebago Industries

More People Trust Winnebago Industries Than Any Other Brand

Winnebago
Itasca

Introducing the NEW 2006 Itasca Horizon™

TRUEAIR
MULTI-STATE CENTRAL AIR

Circle 40% Faster, 50% 10% Quieter

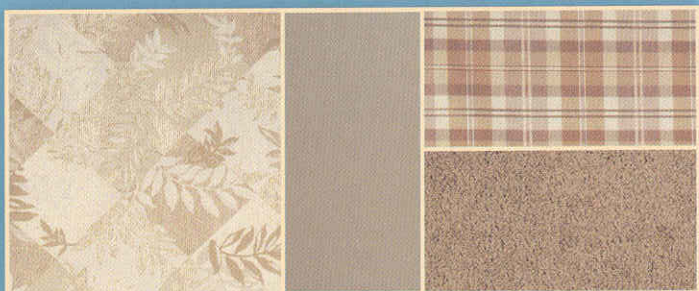
Copyright © 2005 Winnebago Industries, Inc. | Phone: (641) 385-3535 | This site uses: Flash, Acrobat Reader, QuickTime

WINNEBAGOIND.COM Visit us on the web for more info on all of our motor homes, latest product updates and a host of web-exclusive content.

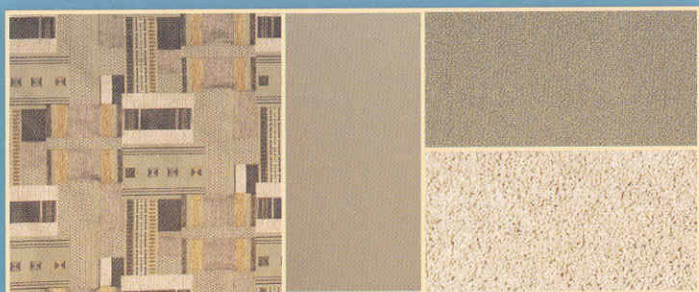
INTERIOR DECOR

Choose from three fabric selections and four wood choices.

SOFA	LEATHER	BEDSPREAD
		CARPET



Winter Wheat w/available Papyrus UltraLeather HP™



Silver Sage w/available Papyrus UltraLeather HP™



Cavalier w/available Buff UltraLeather HP™



Portsmouth
Oak



Concert
Cherry



Washed Maple



Sierra
Maple

FURNITURE	33V	35A	35U	37B	38J	38R	38T
Rest Easy multi-position lounge (fabric), throw pillows & fold-down armrest w/beverage holder	0	0		0	0	0	
Rest Easy multi-position lounge (fabric), power recliners, dual-trundle storage, end table (38T only) 75" x 70"			0				0
Rest Easy multi-position lounge (UltraLeather HP), fold-down armrest w/beverage holder	0	0	0	0	0	0	0
Sofa (fabric) removable armrests (2), footrests (2), throw pillows (2)	S	S	S	S			
Sofa (fabric) J-lounge, power recliner, drawer below					S	S	
Sofa (UltraLeather HP) J-lounge, power recliner, drawer below					0	0	
Sofa/Dinette (fabric) access to storage below, folding chairs (2), single footrest on sofa							S
Sofa/Dinette (UltraLeather HP)							0

GALLEY	33V	35A	35U	37B	38J	38R	38T
Countertops solid-surface w/backsplash, Cutting Board slide-out, Faucet single-control w/pull-out sprayer, Light fluorescent, under cabinet, Lights indirect, Microwave/Convection Oven w/vented range fan, touch control, stainless steel, Sharp® Pantry(ies) , Range Top 3-burner w/storage below, sealed burners, stainless steel, Amana® Range Cover , Refrigerator/Freezer large double-door, stainless steel, Norcold® Sink double-bowl molded w/sink covers (countertop material), Wastepaper Basket , Water Purification System w/separate faucet	S	S	S	S	S	S	S
Apothecary Drawers , Appliance Storage Cabinet , Decorative Storage Cabinet , Pull-out Table		S					
Countertop Flip-Up Extension(s)	S	S	S	S	S	S	
Magazine Rack					S	S	
Range 3-burner w/large oven, recessed, sealed burners, one w/high-output, stainless steel, Amana, Refrigerator/Freezer large double-door w/icemaker, stainless steel, Norcold, Refrigerator/Freezer 4-door w/icemaker, stainless steel, Norcold	0	0	0	0	0	0	0
Utility Tray tip-out		S			S	S	
Wall Border	S	S	S	S	S	S	

BATH	33V	35A	35U	37B	38J	38R	38T
Cabinet lavatory, Cabinet medicine, Countertops solid-surface w/back splash (NA 38T), Faucet (lavatory) single-control, Faucet (shower) single-control, fixed showerhead w/Moen Posi-Temp® Hair Dryer wall-mounted w/night light, Light shower, Lights makeup, Shower w/wall surround, Shower Door(s) textured glass, Sink , Toilet (porcelain) w/foot-pedal flush	S	S	S	S	S	S	S
Cabinet linen			S			S	S
Chair Rail private toilet room	S	S		S	S		
Clothes Rod removable			S				
Magazine Rack , Mirror			S			S	
Robe Hook		S			S	S	S
Shower Package handheld showerhead, fold-down shower seat	0	0	0	0	0	0	0
Towel Rack 3-rod, mounted to door	S	S	S	S	S	S	

BEDROOM	33V	35A	35U	37B	38J	38R	38T
Bed queen, innerspring mattress w/underbed storage, Bedsread , Light decorative ceiling, Lights decorative wall lamps, Mirror(s) back wall, Nightstands (2) , Pillows , Powerpoint 12-volt DC receptacle(s), Throw Pillow , Wardrobe Cabinet cedar lined, carpeted floor, clothes rod, drawers (NA 35U, 38R), light	S	S	S	S	S	S	S
Chest of Drawers						S	
Desk w/folding chair				0			
Hamper		S	S		S	S	S
Headboard	S	S	S		S	S	
Light halogen vanity							S
Lounge Chairs (2) w/storage ottomans, Flexsteel®				S			
Sleep Number® Bed queen by Select Comfort® remote holders	0	0	0	0	0	0	0
Vanity Cabinet w/fold-up countertop, stool	S						S
Wainscoting w/chair rail, Wall Border slide-out room only	S	S	S		S	S	S

EXTERIOR	33V	35A	35U	37B	38J	38R	38T
Awning Rails rain gutters, Door entrance w/separate screen door, deadbolt lock, Door fuel-fill, Entrance Door Steps triple electric w/doorjamb switch, Exterior Graphics Packages Medium Titanium Metallic or Granite Metallic (w/protective film below entry door), Ladder , Lights fog lamps, Light porch w/interior switch, Light driver side service, Mirrors electric, remote w/defrost, breakaway design, Mudflaps front & rear, Receptacle AC duplex, Sidewall Skin one-piece smooth fiberglass, high-gloss, Storage Compartments smooth valance panels, trunk liner, gas struts, TriMark® KeyOne™ System, paddle latch, lights, interior master light shut off switch	S	S	S	S	S	S	S
Awning patio	S	S	S		S	S	
Awning patio, electric w/wind sensor, remote	0	S	0	0	S	0	0
Awning patio, sunscreen (requires electric awning package), Front Protective Mask w/full-body paint, Full-Body Paint Deep Forest or Vermillion (w/protective film below entry door), Undercoating (Workhorse only)	0	0	0	0	0	0	0

SYSTEMS	33V	35A	35U	37B	38J	38R	38T
Automotive Heater/A/C , Aux. Start Circuit , Batteries (2) (coach) Group 24 deep-cycle, w/disconnect system, Battery Charge Control automatic dual, Converter/Charger 55-amp. electronic, Drain 1" water tank, Electrical Distribution System AC & DC breaker panels, Generator 5,500-watt, Onan® Marquis Gold™ gas, Generator/Shoreline Automatic Changeover Switch , Home Comfort Plus Package central air heat pump, aux. automotive heater, insulated powered ventilator fans (bath & galley), OnePlace® systems center, wall-mounted, battery digital voltmeter, energy management display, generator hourmeter gauge, generator start/stop switch, holding tank levels, LP tank level, solar panel/battery charger light, water heater switch & lights, water pump switch & light, water tank level, courtesy ceiling light, Power Cord 30-amp., PowerLine® energy management system, Service Center (drainage/water) city water hookup/tank diverter fill, drainage valves, exterior wash station w/pump switch, 10' sewer hose, QuickConnect® coupling valve, QuickPort® service connection hatch, Service Center (electrical) cable input, power cord, QuickPort service connection hatch, telephone input, portable satellite dish hookup, Solar Panel 10-watt battery charger, Tank flushing system, black tank only, Tank holding, heated compartment, Tank LP, permanent mount w/gauge, TrueAir® central air conditioning system, TrueLevel™ holding tank monitoring system, Water Heater 10-gallon electronic ignition, 120 VAC/LP gas w/motoraid, Water System Winterization Package water heater bypass valve & siphon tube, Water Pump demand, variable speed, Water Tank Fill gravity w/locking door (NA 38J), Water Tank Fill pressurized city hook-up w/diverter valve	S	S	S	S	S	S	S

SYSTEMS	33V	35A	35U	37B	38J	38R	38T
Furnace 35,000 BTU, low-profile	S						
Furnace 40,000 BTU, low-profile	S	S	S	S	S	S	S
Generator 7,000-watt, Onan Marquis Gold, gas, Inverter DC/AC, 600-watt, Power Cord 50-amp. flexible cord	0	0	0	0	0	0	0
Washer/Dryer Combination	0		0	0	0	0	0
Washer/Dryer Prep	S		S	S	S	S	S

SLIDEOUTS	33V	35A	35U	37B	38J	38R	38T
Slideout Room (bed 33V, 35A, 37B, 38J; bed/wardrobe 35U, 38R; wardrobe 37B) w/slidoorm cover	S	S	S	S	S	S	
Slideout Room (bed/wardrobe/ent. ctr./lounge) w/slidoorm cover							S
Slideout Room (sofa/dining) w/slidoorm cover, StoreMore®	S	S	S	S			
Slideout Room (lounge/galley) w/slidoorm cover, StoreMore					S	S	
Slideout Room (TV/dining) w/slidoorm cover, StoreMore					S		
Slideout Room (galley) w/slidoorm cover		S					
Slideout Room (sofa/dining/refrig) w/slidoorm cover, StoreMore							S

SAFETY	33V	35A	35U	37B	38J	38R	38T
Assist Bar interior, Assist Handle exterior, acrylic w/logo, Bumpers front & rear, Detectors/Alarms LP leak, smoke, carbon monoxide, Fire Extinguisher 10 BC, Ground Fault Interrupter , Lights high-mount brakelamp, Light courtesy w/wall switch, Lights daytime running lamps, Seat Belts cab, 3-point adj., Window escape, Windshield laminated safety glass	S	S	S	S	S	S	S
Child-Seat Tether Anchor	S	S	S	S			S

WARRANTY ⁷	33V	35A	35U	37B	38J	38R	38T
12-month/15,000-mile basic limited warranty⁶ , 36-month/36,000-mile warranty on structure⁶ , 10-year limited parts & labor warranty on roof skin⁶	S	S	S	S	S	S	S

- The height of each model is measured to the top of the tallest standard feature and is based on the curb weight of a typically equipped unit. The actual height of your vehicle may vary by several inches depending on chassis or equipment variations. Please contact your dealer for further information.
 - Suncruiser floorplans feature a wide-body design – over 96" In making your purchase decision, you should be aware that some states restrict access on some or all state roads to 96" in body width. Before making your purchase decision, you should confirm the road usage laws in the states of interest to you.
 - The load capacity of your motor home is designated by weight, not by volume, so you cannot necessarily use all available space when loading your motor home.
 - Capacities are based on measurements prior to tank installation. Slight capacity variations can result due to installation applications.
 - Capacities shown are tank manufacturer's listed water capacity (W.C.). Actual filled LP capacity is 80% of listing due to overfilling prevention device on tank.
 - Actual towing capacity is dependent on your particular loading and towing circumstances which includes the GWR, GAWR, and GCWR as well as adequate trailer brakes. Please refer to the Operator's Manual of your vehicle for further towing information.
 - See separate chassis warranty details provided in Owner's Manual.
 - See your dealer for complete warranty information.
- NA Not Available
S Standard
0 Optional

Not all items available in combination. See dealer for details.

Winnebago Industries® continuing program of product improvement makes specifications, equipment, model availability, and prices subject to change without notice. Comparisons to other motor homes are based on the most recent information available.



**Built by Winnebago Industries.
Built to last.**

Itasca motor homes are built by Winnebago Industries, the company that defined motor homes. The company that built its reputation on quality construction. The company that transformed the motor home concept into a way of life.

Today, Winnebago Industries brings that reputation for quality and its 47-year history of motor home innovation to the design and construction of every motor home. It's all a part of SuperStructure,[®] our exclusive system of proprietary structural components that instills each motor home with improved strength and durability.

SOLID FOUNDATION Steel and aluminum truss work provides a solid, flat foundation for floors and sidewalls. Winnebago Industries engineers also take special care to distribute the weight of components to ensure proper handling and stability.



**SUPER
STRUCTURE**



INTERLOCKING JOINTS

The floors, sidewalls and roof are all integrally connected using interlocking joints. This creates a coach body that acts as a cohesive unit for improved strength and durability.

E-COATING Winnebago Industries employs an exclusive 12-stage automotive-style dip tank process to apply an advanced electrodeposition coating on critical steel components for unmatched corrosion protection.

THERMO-PANEL[®] SIDEWALLS Invented by Winnebago Industries, Thermo-Panel construction combines a fiberglass panel, high-density, block-foam insulation and aluminum support structures to create some of the most durable, lightweight sidewalls in the industry.

FIBERGLASS ROOF Every Itasca motor home features a one-piece fiberglass roof backed by a 10-year limited parts-and-labor roof skin warranty.

ATTENTION TO DETAIL Whether it's sending every coach through a high-pressure water tunnel to check for leaks or labeling each individual wire and barcoding parts to save time and frustration during service, Winnebago Industries considers every detail to ensure your Itasca motor home provides you with years of pleasure.

STRONG AS STEEL Appliances are secured directly to embedded steel plates for added safety. Windshields are also mounted in steel with an automotive-style sealant; lesser designs use a rubber gasket to mount the windshield in fiberglass.



1-year-old Itasca fiberglass roof



1-year-old competitor's rubber roof

BUILT TO A HIGHER STANDARD The Suncruiser features a crowned, one-piece fiberglass roof, backed with a 10-year limited parts-and-labor roof skin warranty. Fiberglass offers superior strength, attractiveness and durability over the rubber roofs found on many competitive models which can chalk, streak and degrade over time. Fiberglass also provides increased puncture and tear resistance.



TAKE A TOUR We're proud of our process, state-of-the-art facilities and the people who make Winnebago Industries number one. We invite you to visit our factory in Forest City, Iowa, for a first-hand look at the dedication and technology behind every motor home we build.



RECOGNIZED QUALITY The Recreation Vehicle Dealer Association annually rates RV manufacturers and awards the Quality Circle award to manufacturers who provide exceptional products, service and support. Winnebago Industries is proud to be the only manufacturer to receive this award every year since its inception.



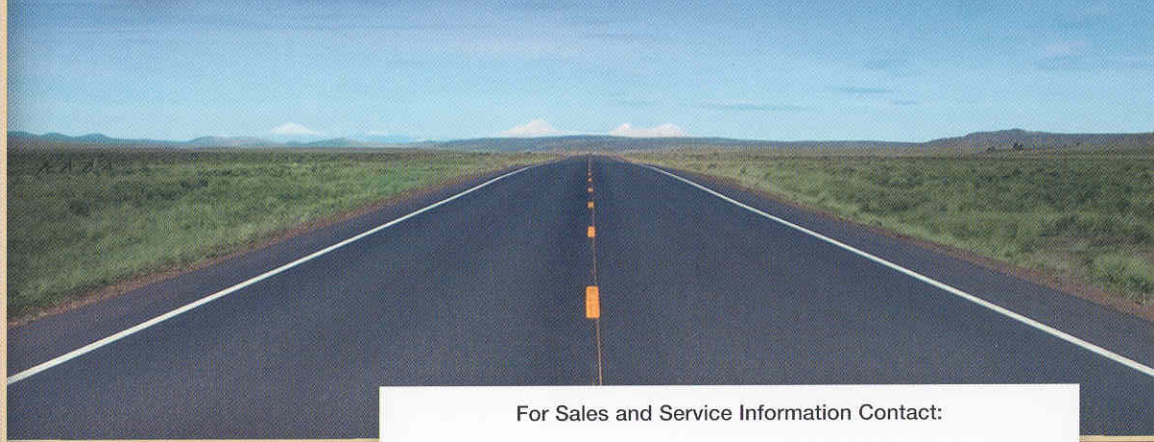
COMMITTED TO SERVICE We back our motor homes with the industry's best service after the sale.

- 12-month/15,000-mile basic limited warranty
- 36-month/36,000-mile warranty on structure
- Standard 10-year limited parts-and-labor roof skin warranty
- Complimentary 24-hour roadside assistance program
- TripSaver Fast Track Parts. TripSaver guarantees that in-stock warranty parts ship directly to your dealer within 24 hours.
- National dealer service network



WIT CLUB Itasca owners are like family. Joining the Winnebago-Itasca Travelers is a great way to meet and travel with other Itasca enthusiasts. Members enjoy:

- Caravans and rallies
- Local and state group activities
- RV travel benefits



For Sales and Service Information Contact:



Built proudly by



NYSE listing: WGO

©2005 Winnebago Industries, Inc.

Printed in USA

Seat belts are your most important hookup. Always buckle up.