

## QUALITY

Winnebago RVs are designed and built around you, with superior craftsmanship, advanced manufacturing technologies and steel-focused construction to enhance safety and reliability.

## INNOVATION

From groundbreaking RVs to game-changing features to the spacious floorplans made possible by our SmartSpace™ design, our heritage is unrivaled for continuous industry firsts in vehicle technology and design.

## SERVICE

Our carefully chosen dealers are supported by factory training and our advanced parts supply system, while owners benefit from excellent real-world customer support as well as 24/7 access to online technical information.

## BELONGING

Winnebago owners are a connected community — some of the friendliest, most knowledgeable and welcoming RVers you'll find anywhere.

**WINNEBAGO**



©2024 Winnebago. Printed in USA 02/24

**WINNEBAGO**

**MINNIE WINNIE**

A classic,  
family-friendly  
motorhome,  
ready for your  
next adventure.



#### GENERAL HEADQUARTERS FOR ANY KIND OF FUN

Comfortable and attractive, the Minnie Winnie® lounge serves as meeting-place central for planning or recapping your adventures, as well as a cozy retreat for activities with family or friends.



#### COOKING + DINING SPACE

Details like Corian® solid surface countertops and U-shaped dinette (NA 25B) makes this beautiful galley functional for feeding hungry troops or creating a gourmet masterpiece.



#### PASS THE POPCORN

The living is easy and the viewing is always great in the comfortable Minnie Winnie lounge, thanks to swivel cab seats (31K) and available Theater Seating (26T, 31H, 31K).



#### FLEXIBLE SLEEPING OPTIONS

Each floorplan features a rear bedroom with double or queen bed, a large cabover bunk, convertible dinette, and sofa/bed (NA 22M, 22R), while bunk beds in the 31H boost sleeping capacity to eight.



#### PROVEN FORD® E350/450 CHASSIS

The Minnie Winnie cab provides a commanding view of the road and incorporates the latest safety features of the Ford E350/E450 chassis, while the new 7.3-liter V-8 makes short work of long hills.



# Six stylish, comfortable floorplans means there's a Minnie Winnie that's just right for you.

## 1. Smart Driver Assist

A Winnebago conventional Class C exclusive, Ford's Smart Driver Assist Technology Package includes adaptive cruise control, lane departure warning, forward collision warning, and more.

## 2. Spacious Lounge

Whether for mealtimes, socializing, game or movie nights, the large and inviting Minnie Winnie lounge featuring a U-shaped dinette, or Dream Dinette in the 25B, and multiple seating and sleeping options is the place to be.

## 3. Full Galley

With a large double-door refrigerator, 3-burner cooktop, microwave and stainless steel sink, the galley is well-equipped to keep the crew well-fed with your favorite meals.

## 4. Bathroom with Full Shower

The Minnie Winnie bath includes a full shower with flexible showerhead, skylight, powered roof vent, lavatory cabinet, medicine cabinet, towel bars and robe hooks.

## 5. Comfortable Sleeping

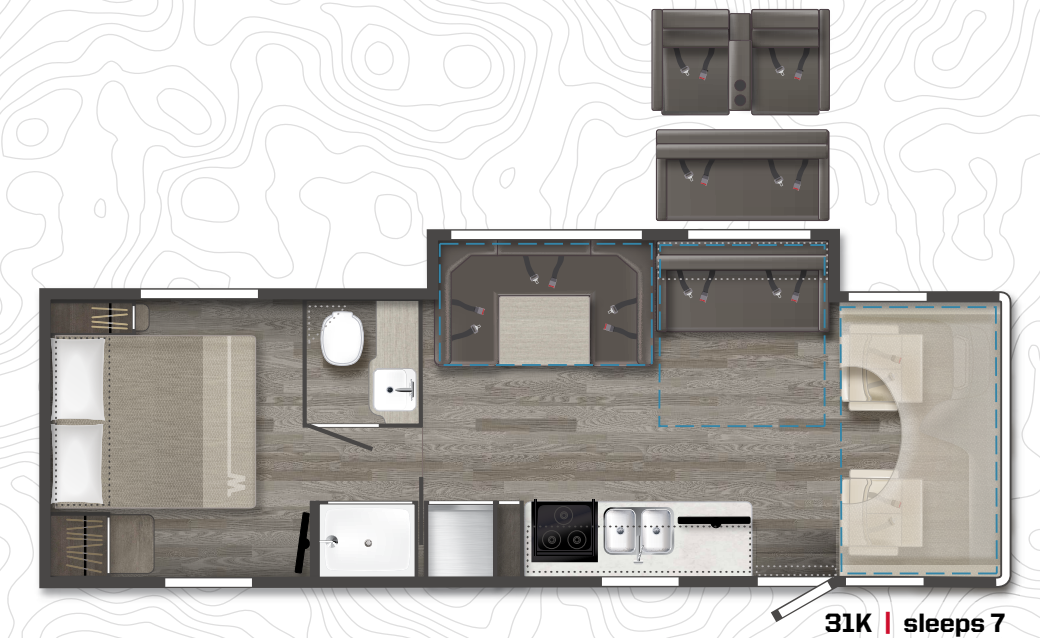
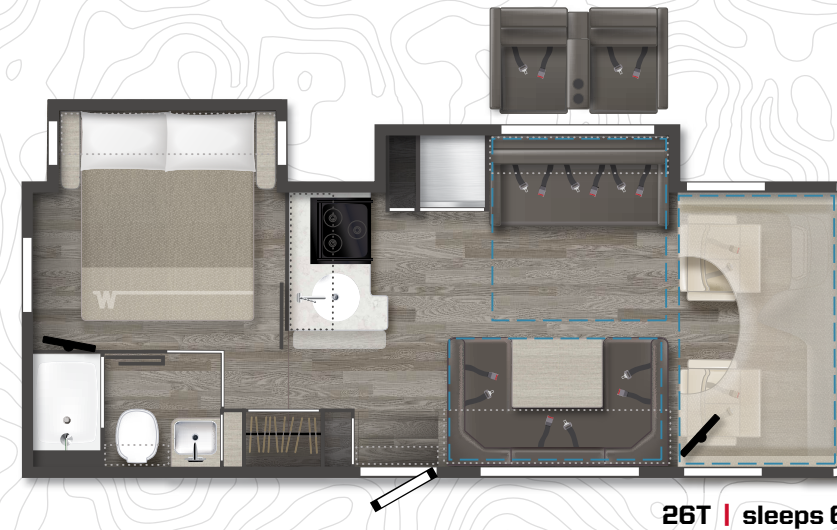
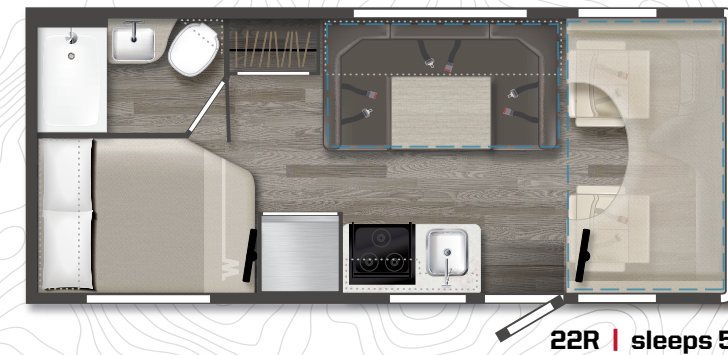
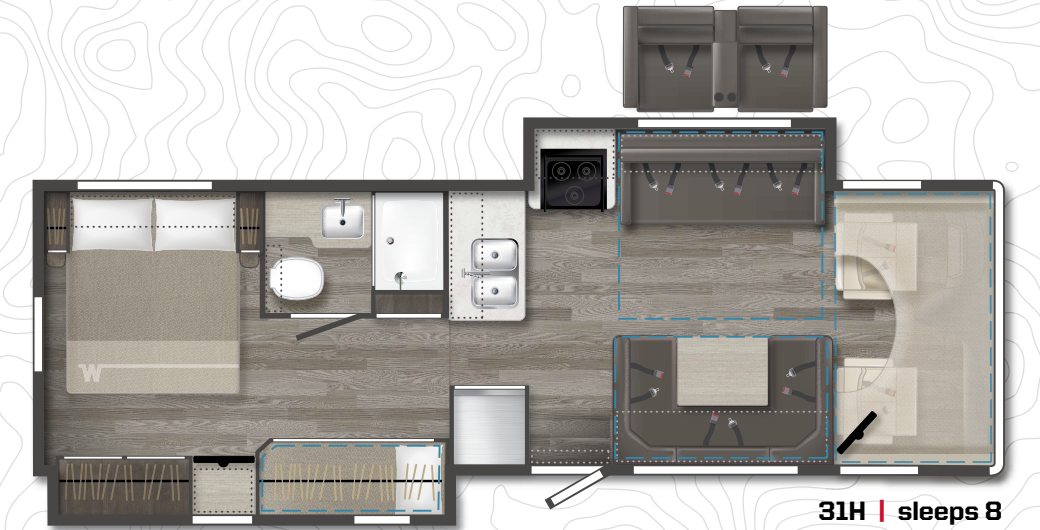
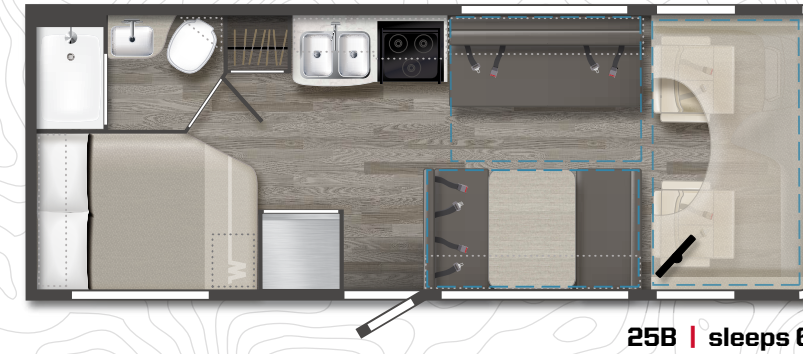
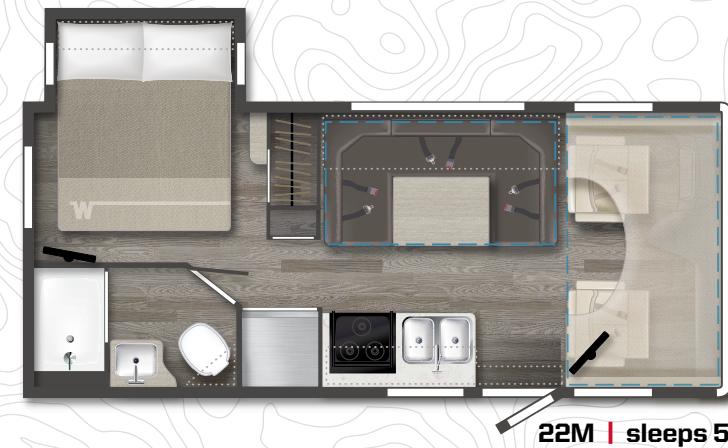
Starting with a corner or walkaround queen bed and a spacious cabover bunk, the Minnie Winnie comfortably sleeps up to 8 campers when the day is done.

## 6. Storage Inside and Out

With large exterior compartments, plus interior storage overhead, in the galley, bedroom and even the bath, the Minnie Winnie makes it easy to bring it along — and keep it organized.

## 7. More Features, Standard

The Minnie Winnie comes with a long list of standard features that are optional (or unavailable) on other motorhomes, including Corian countertops, powered patio awning, radio/rearview monitoring system, second coach battery and much more.



Note: Dotted lines denote overhead storage areas. Blue dashed lines denote sleeping areas. Floorplans are representations only and are subject to change. Please contact a certified Winnebago dealer for more information.



WINNEBAGO

# MINNIE WINNIE / Specifications



## Chassis

**Ford® E450 chassis** 350-HP 7.3L V8 Premium Engine, TorqShift 6-speed automatic transmission w/overdrive, 210-amp. alternator

**4-wheel ABS**

**Rear auxiliary springs** (26T, 31H, 31K)

**Trailer hitch** 7,500-lb. drawbar/500-lb. maximum vertical tongue weight

**Stainless steel wheel liners and valve extenders**

**7-pin wiring connector**

## OPTIONAL EQUIPMENT

**Ford E350 chassis** 350-hp 7.3L V8 Premium Engine, TorqShift 6-speed automatic transmission w/overdrive, 210-amp. alternator (22M, 22R)

**Hydraulic leveling jacks** (front and rear) (26T, 31H, 31K)

Spare tire

## Cab Conveniences

**Cab seats** armrests, fixed lumbar support, and multi-adjustable slide/recline

**3-point seat belts**

**Airbags** driver and passenger

**12-volt powerpoint**

**Power steering** w/tilt and cruise control

**Power door locks**

**Sunvisors**

**Radio/rearview monitor system** w/integrated 8.95" multi-function touchscreen monitor and rear color camera, Bluetooth®, Apple CarPlay®, Android Auto™ and Sirius XM® ready (requires available receiver w/antenna upgrade)

**Mirrors** w/defrost, remote and video camera

**Cab mat**

**Remote keyless entry**

**Auto headlight control**

**Electronic stability control**

**Hill start assist**

**Traction control**

**Adaptive cruise control**

**Automatic emergency braking**

**Auto high beam control**

**Distance alert**

**Driver monitoring**

**Forward collision warning**

**Lane departure warning**

**Post-collision braking**

**Tire pressure monitoring**

## OPTIONAL EQUIPMENT

**Cab seats** w/Ultrafabrics® UF2 Premium Leatherette covering

**Swivel cab seat pedestal** (31K) (driver and passenger)

## Interior

**Amplified digital HDTV antenna**

**Roller shades** (lounger, dinette, and bedroom)

**Mini blinds** (galley/bath)

**Systems monitor panel**

**Roof vent** (bedroom and front bunk area)

**Front wraparound curtain**

**Tinted windows**

**Vinyl ceiling**

**USB charger** (dinette and bedroom)

**LED lighting**

**32" HDTV** w/DVD player

**Vinyl flooring throughout**

**Sofa/bed** (25B, 26T, 31H, 31K)

**Assist bar**

**Dream dinette table mechanism** (25B)

## OPTIONAL EQUIPMENT

**Dual-glazed, thermo-insulated windows**

**Sofa sleeper** (31K)

**Theater seating** (26T, 31H, 31K)

## Galley

**Corian® solid surface countertops**

**Microwave oven** w/touch control

**Vented range hood** w/light

**3-burner range** w/glass cover (NA 22R), and oven

**Pantry** (22M, 26T, 31H, 31K)

**6.3 cu. ft. 2-way double-door refrigerator/freezer** w/woodgrain paneling (22M, 22R, 25B)

**8.0 cu. ft. 2-way large double-door refrigerator/freezer**

**Single stainless steel sink** (22R, 26T)

**Double stainless steel sink** (22M, 25B, 31H, 31K)

**Flip-up counter extension** (26T)

## Bath

**Shower 23" x 34"** (22M, 22R, 25B)

**Shower 24" x 32"** (26T)

**Shower 26" x 30"** (31K)

**Shower 26" x 38"** (31H)

**Lavatory cabinet**

**Medicine cabinet**

**Shower** w/wall surround

**Shower door** w/textured glass (31K)

**Shower door** w/retractable screen (22M, 22R, 25B, 26T, 31H)

**Flexible showerhead**

**Skylight**

**Powered roof vent**

**Toilet** w/foot pedal

**Tissue holder**

**Robe hook(s)**

**Towel bar(s)**

## Bedroom

**Double bed** w/foam mattress, headboard and mattress cover (22R, 25B)

**Queen bed** w/foam mattress, headboard, and mattress cover (22M, 26T, 31H, 31K)

**Bunk beds** w/covered foam mattresses, mattress covers, storage compartment, and privacy curtains (31H)

**Wardrobe** (22M, 22R, 25B, 26T)

**24" HDTV**

## Exterior

**Premium high-gloss fiberglass skin**

**Porch light** w/interior switch

**Running boards**

**Large lighted trunk storage compartment**

**Powered patio awning** w/LED lighting

**Molded front cap**

**Ladder**

## Heating & Cooling

**20,000 BTU furnace** (22M, 22R, 25B)

**30,000 BTU furnace** (26T, 31H, 31K)

**15,000 BTU air conditioner**

## Electrical System

**AC/DC load center, 55-amp. converter/charger**

**30-amp. power cord**

**TV jack and AC receptacle near entrance door**

**Coach battery disconnect system**

**Automatic dual-battery charge control**

**4,000-watt Cummins Onan® Microquiet™ generator**

**2-deep cycle, Group 24 battery**

**Auxiliary start circuit**

**AC/DC 1,000-watt inverter**

## Plumbing System

**Pressurized city water hookup** w/tank fill

**On-demand water pump**

**6-gallon LP water heater** w/electronic ignition

**Heated drainage system**

**Holding tank flushing system** (Black tank only)

**Permanent-mount LP tank** w/gauge

## Safety

**LP, smoke, and carbon monoxide detectors**

**Fire extinguisher**

**Ground fault interrupter**

**Child seat tether anchor**

## Warranty<sup>7</sup>

**12-month/15,000-mile basic limited warranty<sup>a</sup>**

**36-month/36,000-mile limited warranty on structure<sup>b</sup>**

**10-year limited parts-and-labor warranty on roof skin<sup>b</sup>**

## FOOTNOTES

- The height of each model is measured to the top of the tallest standard feature and is based on the curb weight of a typically equipped unit. The actual height of your vehicle may vary by several inches depending on chassis or equipment variations. Contact your dealer for further information.
  - Floorplans feature a wide-body design - over 96". You should be aware that some states restrict access on some or all state roads to 96" in body width. You should confirm the road usage laws in the states of interest to you.
  - The load capacity of your motorhome is designated by weight, not by volume, so you cannot necessarily use all available space when loading your motorhome.
  - Capacities are based on measurements prior to tank installation. Slight capacity variations can result.
  - Capacities shown are the tank manufacturer's listed water capacity (W.C.). Actual filled propane capacity is 80% of listing due to overfilling prevention device on tank.
  - Actual towing capacity is dependent on your particular loading and towing circumstances which includes the GVWR, GAWR, and GCWR as well as adequate trailer brakes. Refer to the chassis operator's manual of your motorhome for further towing information.
  - See separate chassis warranty.
  - See your dealer for complete warranty information.
  - Sleeping capacity is the maximum based on a specific floorplan
- Not all items available in combination. See dealer for details.
- Because features, specifications, equipment, and options may vary from those highlighted in this brochure, the buyer is responsible for confirming with the dealer the features, specifications, equipment, and options included on their specific vehicle. In addition, Winnebago's program of continuous product improvement may result in changes to vehicle specifications, equipment, model availability, and price without notice.

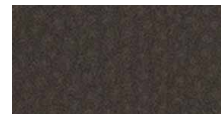
## WEIGHTS & MEASURES

	<b>22M</b>	<b>22R</b>	<b>25B</b>	<b>26T</b>	<b>31H</b>	<b>31K</b>
<b>Length</b>	24'5"	23'10"	26'4"	28'5"	32'9"	32'9"
<b>Exterior Height<sup>1</sup></b>	11 <sup>A</sup> /10'11" <sup>B</sup>	11 <sup>A</sup> /10'11" <sup>B</sup>	11'	11'	11'	11'
<b>Exterior Width<sup>2</sup></b>	8'5.5"	8'5.5"	8'5.5"	8'5.5"	8'5.5"	8'5.5"
<b>Exterior Storage<sup>3</sup></b> (cu. ft.)	44.5	60.4	73.1	45	85	108.3
<b>Awning Length</b>	14'	14'	17'	17'	10'4"	20'
<b>Interior Height</b>	6'10"/6'5.5**	6'10"	6'10"	6'10"/6'5.5**	6'10"/6'5.5**	6'10"/6'5.5**
<b>Interior Width</b>	8'	8'	8'	8'	8'	8'
<b>Freshwater Tank Capacity<sup>4</sup></b> (gal.)	40	40	40	44	44	44
<b>Water Heater Capacity</b> (gal.)	6	6	6	6	6	6
<b>Holding Tank Capacity - Black/Gray<sup>4</sup></b> (gal.)	40/45	21/24	21/26	35/41	37/34	30/30
<b>LP Capacity<sup>5</sup></b> (lbs.)	76.14	76.14	76.14	76.14	76.14	76.14
<b>Fuel Capacity</b> (gal.)	55	55	55	55	55	55
<b>GCWR<sup>6</sup></b> (lbs.)	22,000 <sup>A</sup> /18,500 <sup>B</sup>	22,000 <sup>A</sup> /18,500 <sup>B</sup>	22,000	22,000	22,000	22,000
<b>GVWR</b> (lbs.)	14,500 <sup>A</sup> /12,500 <sup>B</sup>	14,500 <sup>A</sup> /12,500 <sup>B</sup>	14,500	14,500	14,500	14,500
<b>GAWR - Front</b> (lbs.)	5,000	5,000	5,000	5,000	5,000	5,000
<b>GAWR - Rear</b> (lbs.)	9,600 <sup>A</sup> /8,500 <sup>B</sup>	9,600 <sup>A</sup> /8,500 <sup>B</sup>	9,600	9,600	9,600	9,600
<b>Wheelbase</b>	158"	158"	182"	190"	220"	220"
<b>Sleeps<sup>8</sup></b>	5	5	6	6	8	7

<sup>A</sup> Rear of Coach   <sup>A</sup> Ford E450 Chassis   <sup>B</sup> Ford E350 Chassis

## DECOR

### STARR



Ultrafabrics UF Select



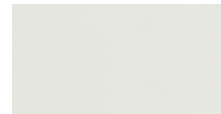
Bed Cover



Vinyl Flooring



Wall Board

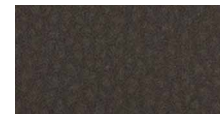


Countertop



Wood - Walnut

### LENNON WITH CHARCOAL



Ultrafabrics UF Select



Bed Cover



Vinyl Flooring



Wall Board



Countertop



Wood - Driftwood II

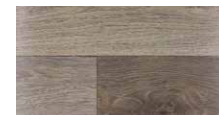
### LENNON WITH MEDIUM GRAY



Ultrafabrics UF Select



Bed Cover



Vinyl Flooring



Wall Board



Countertop



Wood - Driftwood II

## EXTERIORS



CATALINA DELUXE Standard Graphics



CHESTNUT DELUXE Standard Graphics



COOL MIST Full-body Paint



Suede Full-body Paint