

2012 **Aspect**





On the cover: **28T Gold Deluxe Graphics**

 SMARTSPACE

28T Imperial with Honey Cherry



30C Westwood with Forest Cherry

## It's All in How You Look at It

**Comfort. Class. Convenience.** More than words, they are the standard when you choose the Winnebago Aspect,<sup>®</sup> an exceptional Class C touring vehicle that embodies the joy of what it means to travel and explore. Don't let Aspect's trim size and easy automotive-style handling fool you; this is a fully equipped motor home loaded with amenities that will make each trip a special journey.

Watch the game in the lounge, or enjoy a movie under the stars at your exterior entertainment

center with a 26" LCD TV available in both models. The Aspect has the standard features you have come to expect in a Winnebago motor home:

- Home Theater Sound System with DVD player
- Soft vinyl ceiling and easy-to-clean vinyl flooring
- Shoreline/generator automatic changeover switch
- Walk-around queen bed and abundant wardrobe

### Why Aspect?

- Sleek, easy-to-handle touring coach
- Double- and triple-slide floorplans
- Numerous dinette and sofa options
- Easy-care vinyl flooring in living area
- Swivel cab seats improve livability (standard 28T, optional 30C)
- New rear trunk exterior storage
- Winnebago Industries' quality reputation



**Recognized Quality** The RV Dealers Association bestows its annual Quality Circle Award based on dealer ratings to the manufacturers that provide exceptional products, service and support. Only one manufacturer has received this honor for fifteen consecutive years: Winnebago Industries.<sup>®</sup>

## It's All Here

There's no need to sacrifice any amenities to enjoy a nimble touring coach when you choose the Aspect. With a three-burner range top with storage below, microwave oven with vented range fan (available stainless steel microwave/convection oven), abundantly sized refrigerator, and fully extendable drawers, you will be sure to have every comfort and convenience in your travels. The available filtered cold water might be just that added touch of luxury you desire.

Both floorplans highlight flexibility in dining. The 28T's innovative U-shaped dinette enables you to flip up the table extension to seat additional guests, and the available BenchMark® dinette (30C) combines storage with comfort. All dinettes convert into cozy, restful sleeping spaces when needed.

The available Interior Upgrade Package takes things just a bit further: stylish appliqué for the dashboard, carpet floor mats, intimate rope lighting as well as an elegant galley backsplash, MCD American Duo® solar/blackout roller shades, and the addition of the Dream Dinette™ table that easily adjusts to the perfect height with just one hand (30C).



**Roomy** Enjoy meals or play cards with friends in the spacious U-shaped dinette.



30C

# Best in Class

See how Winnebago Industries takes motor home design and function to the next level, and why we've earned the right to be called the Most Recognized Name in Motor Homes.®



**Adaptability**  
It's a sofa, it's a lounge, it's a bed; it's the *Rest Easy® multi-position lounge*. This year we added a removable table that is efficiently stored within the sofa arm (28T). What will we think of next?



**Let There Be Light** With our available smoothly retracting *MCD American Duo® solar/blackout roller shades* you can control just how much light and privacy you want—no matter the time of day. *MCD Solo® shades* come standard.



**Multi-Tasking**  
The *BenchMark full-comfort dinette* is a premium dining set, has innerspring seat construction for residential-style comfort, easy flip-up storage and provides a comfortable bed when needed.



**Versatility** All sofa beds are not created equal. The *Comfort Sofa Sleeper* is wrapped in durable *Ultraleather*, operates with one hand, and has a self-inflating mattress so cozy, your guests won't want to leave.



**Total Package**  
The *RV Radio® and available rearview monitor* combine to engage all your senses. Touch the 6.5" LCD touch screen; hear the AM/FM, weather band, CD, and MP3; and see safely behind you.



**Outdoor** Liven up the campsite by choosing the *exterior entertainment center* with LCD TV, CD/DVD player, AM/FM and two speakers in a lockable compartment.



**Technology**  
Other motor homes employ tank monitors with probes that can corrode. Our *TrueLevel™ tank monitor system* harnesses sonar technology to provide accurate readings every time.



**SmartStorage**  
With an 11 cu.-ft. *rear storage compartment*, complete with a wash station and electrical hookups for easy access, you'll never have to crawl on your hands and knees to get what you need.

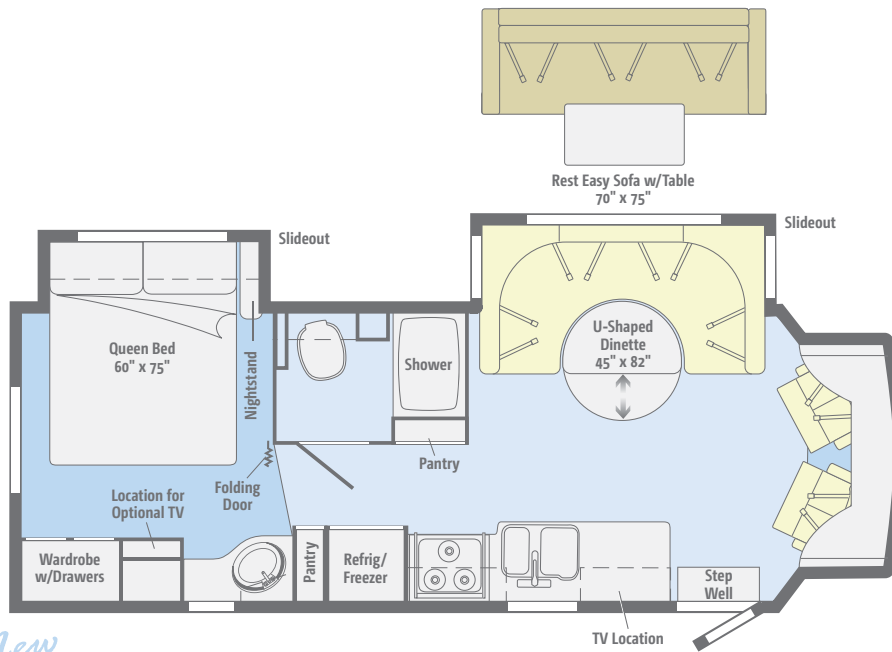
**WINNEBAGO**  
GoWinnebago.com

GoWinnebago.com is your resource for web-exclusive content and all the details you can't fit in a brochure!

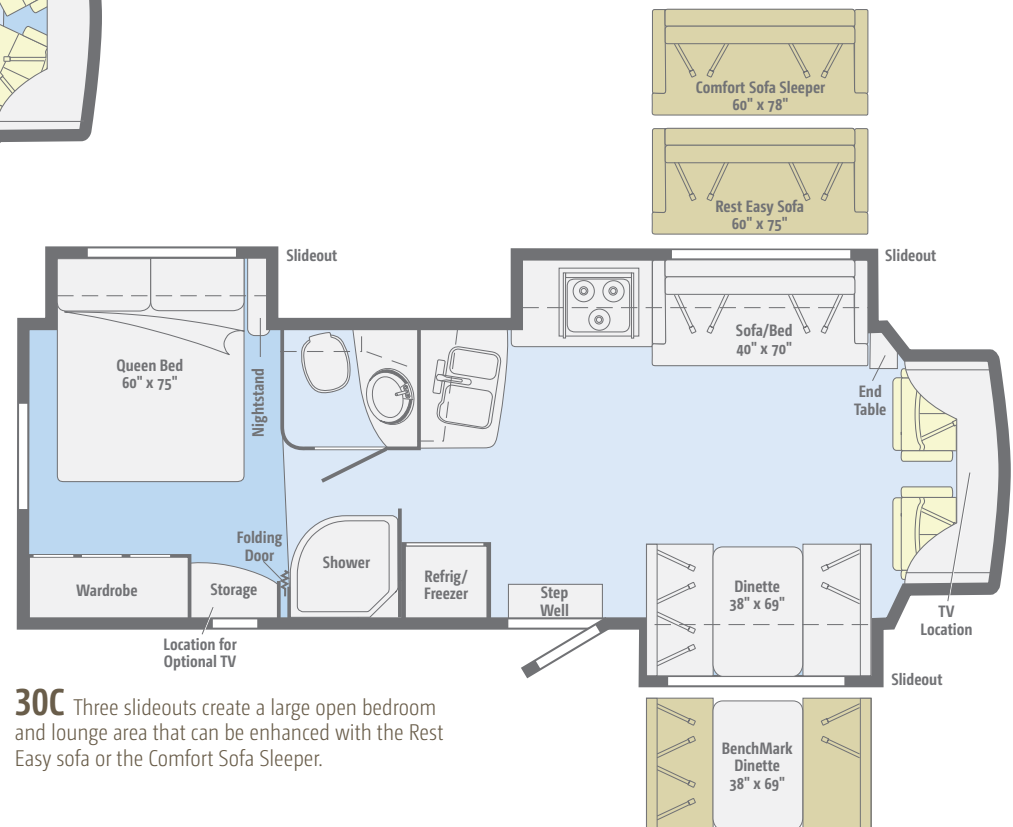


# Floorplans

Dimensions shown are for sleeping space only and may vary due to styling differences. Dashed lines denote overhead storage areas. Floorplans and specifications are also available online at [GoWinnebago.com](http://GoWinnebago.com).



*New*  
**28T** The U-shaped dinette creates an attractive and comfortable centerpiece for a very welcoming living space that incorporates the swivel-based cab seats.



**30C** Three slideouts create a large open bedroom and lounge area that can be enhanced with the Rest Easy sofa or the Comfort Sofa Sleeper.

**WINNEBAGO**  
 GoWinnebago.com

See your favorite motor homes come alive with virtual tours at [GoWinnebago.com](http://GoWinnebago.com).



# Specifications

## FORD® E450 CHASSIS

305-hp 6.8L Super-Duty V10 SEFI Triton® engine

TorqShift™ 5-speed automatic transmission

120-amp. alternator

4-wheel ABS

Trailer Hitch<sup>5</sup> 5,000-lb. drawbar/350-lb. maximum vertical tongue weight and wiring w/7-pin connector

Stainless steel wheel liners

## OPTIONAL EQUIPMENT

Rear auxiliary air springs

Automatic hydraulic leveling jacks w/automatic controls (front and rear)

Stylized aluminum wheels

## CAB CONVENIENCES

Cab Seats armrests, lumbar support and multi-adjustable slide/recline

Cab seats w/swivel pedestal (28T)

RV Radio® AM/FM stereo, CD player, weather band, iPod/MP3 input, remote

Chassis/house battery radio power switch

Tilt steering wheel

Cruise control

Power steering

12-volt powerpoints

Power door locks

Sunvisors

Power exterior mirrors w/defrost

## OPTIONAL EQUIPMENT

Cab seats w/swivel pedestal (30C)

RV Radio/rearview monitor system 6.5" LCD touch screen color monitor, CD player, weather band, handheld remote, iPod/MP3 input, color camera w/one-way audio, satellite-ready

Sirius® Plug-N-Play Satellite Radio System 6-month complimentary subscription, 2 docking ports and iPod interface connector

## INTERIOR

Home Theater Sound System receiver, DVD player, amplifier, 5 speakers, subwoofer

26" LCD TV

Satellite system ready

Video selection system

Front privacy curtain

MCD American Solo® blackout roller shades (lounge, dinette and bedroom)

Soft vinyl ceilings

Mini blinds (galley)

Tinted windows

Amplified digital HDTV antenna

OnePlace® systems center

Powered roof vent (bath)

Roof vent (lounge & bedroom)

Key-activated slideroom master lock switch

## OPTIONAL EQUIPMENT

Skylight w/sliding screen, shade and vent

Interior Upgrade Package rope lighting, galley backsplash, dash and beverage tray appliqué, Dream Dinette™ adjustable table (30C), carpet floor mats in the cab, decorative picture, 2 galley sink covers, range cover, raised panel stile-and-rail refrigerator door insert, 2 sofa throw pillows (30C), MCD American Duo® solar/blackout roller shades in the lounge, dinette and bedroom

Tinted, dual-glazed, thermo-insulated windows

Satellite TV antenna system

King-Dome® HD-ready in-motion satellite dish antenna system

Pay-as-you-go TV Dish Network HD receiver (requires in-motion satellite dish)

Powered roof vent (bedroom)

Carpet in lounge and dining area

## GALLEY

Thermo-formed laminated countertops

Flip-up countertop extension (30C)

2-door refrigerator/freezer

3-burner range top w/storage below

Microwave oven w/vented range fan

## OPTIONAL EQUIPMENT

Cold water filtration system

Stainless steel microwave/convection oven w/range fan

## BATH

Thermo-formed laminated countertop

Skylight

Flexible showerhead

Curved textured glass shower door (30C)

Retractable, self-cleaning shower screen (28T)

Porcelain toilet

Water pump switch

## BEDROOM

Queen bed w/foam mattress, headboard, bedspread, pillows and pillow shams

## OPTIONAL EQUIPMENT

19" LCD TV, DC

## EXTERIOR

Porch light w/interior switch

Automatic entrance step

Stepwell light w/interior switch

Premium high-gloss skin

Rear mud flaps

Fiberglass running boards w/wheel lips

## OPTIONAL EQUIPMENT

Entertainment Center 26" LCD TV, AM/FM stereo, DVD player w/remote, 2 speakers, lockable compartment, radio antenna

Power patio awning w/metal wrap

## HEATING & COOLING SYSTEM

13,500 BTU roof-mount, high-efficiency air conditioner

30,000 BTU low-profile, ducted furnace

## OPTIONAL EQUIPMENT

A/C heat pump

## ELECTRICAL SYSTEM

Exterior AC duplex receptacle and TV jack AC/DC load center, 45-amp. converter/charger

Power Cord Compartment 30-amp. power cord, shoreline/generator automatic changeover switch

Coach battery disconnect system

Automatic dual battery charge control

Auxiliary start circuit

Two deep-cycle, Group 31 batteries

## OPTIONAL EQUIPMENT

4,000-watt Cummins Onan® MicroQuiet™ gas generator

300-watt DC/AC inverter

## PLUMBING SYSTEM

Rear Trunk w/Service Center cable TV input, portable satellite dish hookup, city water hookup w/diverter valve, drainage valves, 10' sewer hose, exterior wash station w/lighted pump switch

6-gallon electric ignition, 110V/LP water heater w/Energy Management System (EMS)

TrueLevel™ holding-tank monitoring system

Winterization Package water heater bypass valve and siphon tube

Permanent-mount LP tank w/gauge

Heated holding-tank compartment

On-demand water pump

## SAFETY

Seat belts

Driver and passenger air bags

Child seat tether anchor (dinette)

LP, smoke and carbon monoxide detectors

10 BC fire extinguisher

Ground fault interrupter

High-mount brake lamps

## WARRANTY<sup>6</sup>

12-month/15,000-mile basic warranty<sup>7</sup>

36-month/36,000-mile limited warranty on structure<sup>7</sup>

10-year limited parts-and-labor warranty on roof skin<sup>7</sup>

1 The height of each model is measured to the top of the tallest standard feature and is based on the curb weight of a typically equipped unit. The actual height of your vehicle may vary by several inches depending on chassis or equipment variations. Please contact your dealer for further information.

2 The load capacity of your motor home is designated by weight, not by volume, so you cannot necessarily use all available space when loading your motor home.

3 Capacities are based on measurements prior to tank installation. Slight capacity variations can result due to installation applications.

4 Capacities shown are tank manufacturer's listed water capacity (W.C.). Actual filled LP capacity is 80% of listing due to overfilling prevention device on tank.

5 Actual towing capacity is dependent on your particular loading and towing circumstances which includes the GVWR, GAWR, and GCWR, as well as adequate trailer brakes. Please refer to the Operator's Manual of your vehicle for further towing information.

6 See separate chassis warranty.

7 See your dealer for complete warranty information.

NA Not Available

Not all items available in combination. See dealer for details. Winnebago Industries® continuing program of product improvement makes specifications, equipment, model availability, and prices subject to change without notice. Comparisons to other motor homes are based on the most recent information available at printing.

## Weights & Measures 28T 30C

Length	29'7"	31'7"
Exterior Height <sup>1</sup>	10'9"	10'8"
Exterior Width	7'11"	7'11"
Exterior Storage <sup>2</sup> (cu. ft.)	34.1	34.8
Awning Length	19'	19'
Interior Height	6'5"	6'5"
Interior Width	7'8"	7'8"
Freshwater Capacity w/Heater <sup>3</sup> (gal.)	33	33
Holding Tank Capacity - Black/Gray <sup>3</sup> (gal.)	27/35	27/35
LP Capacity <sup>4</sup> (gal.)	18	18
Fuel Capacity (gal.)	55	55
GCWR <sup>5</sup> (lbs.)	20,000	20,000
GVWR (lbs.)	14,500	14,500
GAWR - Front (lbs.)	5,000	5,000
GAWR - Rear (lbs.)	9,500	9,500
Wheelbase	200"	220"

# NO SHORTCUTS — NO COMPROMISES

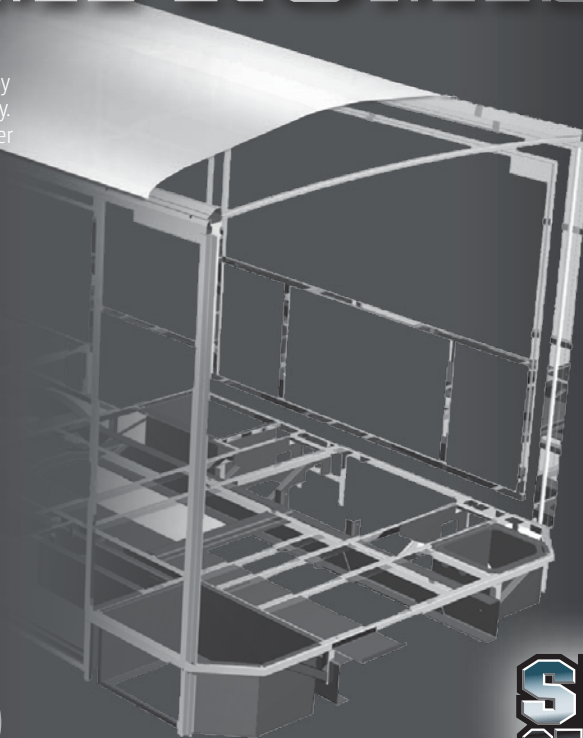
The crowned, one-piece **fiberglass roof** is backed by a 10-year limited parts-and-labor roof skin warranty. Fiberglass offers superior strength and durability over less attractive rubber roofs found on so many competitive models that can streak and degrade over time.

Durable, lightweight **Thermo-Panel® sidewalls** combine fiberglass, high-density block-foam insulation and the inner wall surface with aluminum support structures.

**Metal substructures** secure cabinets and appliances to add safety and stability.

An **electrodeposition coating** helps protect critical steel components.

Specially engineered **interlocking joints** connect the floor, sidewalls and roof into a cohesive unit.



## SUPER STRUCTURE®

## Take a Tour



We're proud of our processes, state-of-the-art facilities and the people who make Winnebago Industries number one. We invite you to visit our complex in Forest City, Iowa, for a first-hand look at the dedication and technology behind every motor home we build.



**You can compare features. You can compare styles. But when it comes to quality construction, there is no comparison.**

Only motor homes manufactured by Winnebago Industries harness the legendary strength and durability of our SuperStructure® construction process—a process we've been perfecting for more than 50 years.

SuperStructure means a solid framework, steel and aluminum substructures and components built in-house to our exacting standards. It means managing each detail to ensure the

integrity and quality of every coach. It means barcoding parts to save time and frustration during service and running every coach through a high-pressure leak test before it leaves the factory.

Where other manufacturers cut corners, SuperStructure ensures the features you can't see are treated with the same care as the ones you can. When you buy a Winnebago motor home, you are getting a coach that is built for you—and built to last.



# Exteriors

# Décor

Deluxe graphics and fiberglass running boards come standard. Upgrade to full-body paint for even more curb appeal.



**Gold**  
DELUXE GRAPHICS



**Bronze**  
DELUXE GRAPHICS



**Champagne Gray**  
FULL-BODY PAINT



**Red Dawn**  
FULL-BODY PAINT



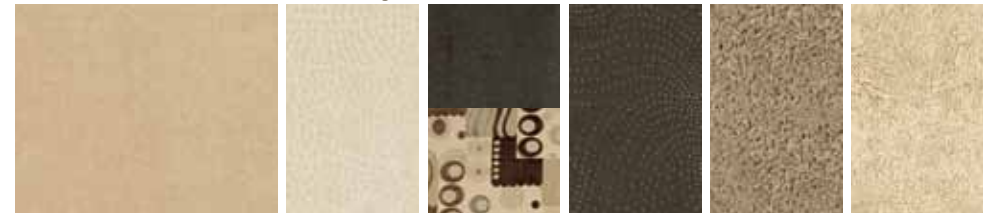
**Sailfin**  
FULL-BODY PAINT



**Sierra**  
FULL-BODY PAINT

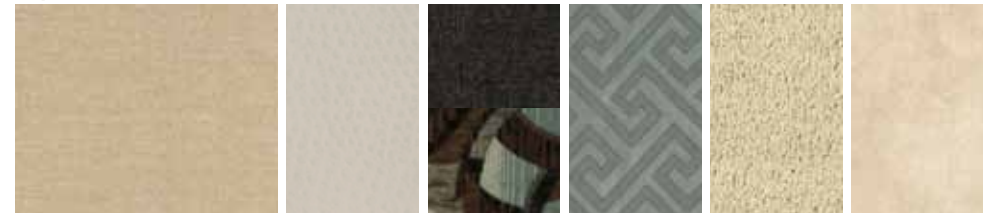
Choose from three fabric collections and three woods with nickel hardware.

**Westwood** *A traditional collection with exciting accents.*



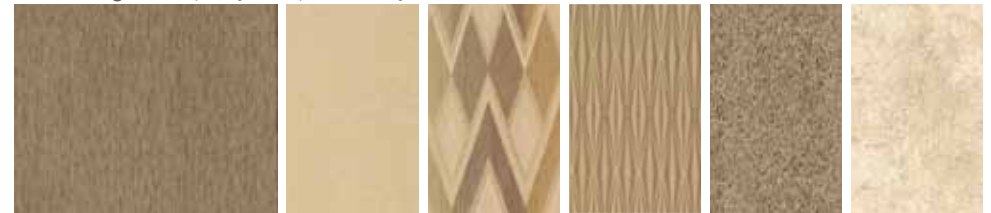
Main      Surfside Ultraleather      Accent      Bedspread      Carpet      Sage Wall Board

**Imperial** *Bold combinations and textiles help you make your mark.*



Main      Stucco Ultraleather      Accent      Bedspread      Carpet      Driftwood Wall Board

**Sunset Ridge** *Wake up to dynamic patterns and fresh tones.*



Main      Wheatfields Ultraleather      Accent      Bedspread      Carpet      Sashay Wall Board



Honey Cherry      Forest Cherry      Coffee-Glazed Vienna Maple      Laguna Pebble Omnova Countertop

*Fabrics and carpets may change without notice or obligation.*



## Don't Miss Out

Caravans, rallies, local and state events, and exclusive RV travel benefits can all be yours as a WIT Club member—and you can meet like-minded folks that possess the same enthusiasm for traveling this great nation of ours. It's a great way to make your Aspect a way of life. Learn more about the Winnebago-Itasca Travelers Club at [WITclub.com](http://WITclub.com).



### Members enjoy:

- Caravans and Rallies
- Local and State Group Activities
- RV Travel Benefits



## Committed to Service

We back our motor homes with best-in-class support both before *and* after the sale:

- 12-month/15,000-mile basic limited warranty
- 36-month/36,000-mile warranty on structure
- 10-year standard limited parts-and-labor roof skin warranty
- Complimentary 24-hour roadside assistance program
  - RV Technical Assistance Hotline
  - RV Service Appointment Assistance
  - Emergency Trip Interruption
  - Emergency Message Service
  - Nationwide Trip Routing
  - Fee-Free Travelers Cheques



- TripSaver Fast Track Parts guarantees that in-stock warranty parts ship directly to your dealer within 24 hours
- National dealer service network



**WINNEBAGO**  
GoWinnebago.com

For photos, videos and a whole lot more about the full lineup of Winnebago motor homes, visit [GoWinnebago.com](http://GoWinnebago.com).



THE MOST RECOGNIZED  
NAME IN MOTOR HOMES™

NYSE: WGO

[GoWinnebago.com](http://GoWinnebago.com)

