

# Era

# WINNEBAGO®



## *Why Era?*

- Premium contemporary interior
- Incredible fuel economy
- Ultraleather™ furniture
- 4x4 Chassis option (70A, 70X)
- Multiplex wall switches
- Truma Combi™ Eco Plus heating system with (2) 850-watt elements



On the Cover: 70M Brilliant Silver Full-Body Paint

70M Paragon featuring Smoke with High-Gloss Dark Canvas Cabinetry

## The Freedom to Go

The original luxury Touring Coach holds a Mercedes-Benz® diesel engine designed with the power and torque you need for your next great adventure. Continuous track lighting, new cabinetry (70M), and a fresh galley design make for a pleasant cooking and dining experience. Three distinct floorplans offer three unique sleeping arrangements, from the Murphy+ Bed in

the 70M, to the rear sofa/bed in the 70X, and to the versatile Flex Bed System in the 70A. Of course, a powerful air conditioning system comes standard, but for those days when you just want a cool breeze, the large rear double doors with a sliding screen door (70A, 70X) can't be beat. Welcome the era of freedom and mobility: the Winnebago® Era.®



2016 MotorHome  
READERS' CHOICE  
WINNER  
Class B



70M Paragon featuring Smoke with High-Gloss Dark Canvas Cabinetry

The Era presents an exciting lineup of floorplans with three unique layouts to accommodate your RV lifestyle. The 70A offers a traditional floorplan with a rear bedroom and a front lounge with a sofa/bed featuring a custom-designed moveable pedestal table that it shares with the swivel cab seats. The 70X can seat up to seven travelers with four captain's chairs around a moveable pedestal table combined with a rear sofa/bed. The innovative 70M features a Winnebago-exclusive Class B slideroom with a built-in Murphy+ Bed that folds from a couch into a queen bed. All three floorplans include dimmable LED lighting for a more pleasing atmosphere and an HDTV with an AM/FM stereo, CD/DVD player, alarm clock, Bluetooth® connectivity, and remote.



70M Lounge HDTV



70M MCD Blackout Roller Shades



70M Galley



70M Bamboo Sink Cover



70M Microwave/Convection Oven

Class B galleys have come a long way and the Era takes it to the next level with a Corian® solid-surface countertop, flip-up countertop extension (70A, 70M), and a decorative backsplash (70M). The microwave/convection oven (70M, 70X) offers the baking and browning capabilities of an oven, with the speed and size of a microwave. A range top and refrigerator/freezer round out a very user-friendly galley.



70M Refrigerator



70M Glass Range Cover



70M Murphy+ Bed

Sleeping comfort never takes a back seat in the Era. The 70A offers the versatility of the Flex Bed system that converts from two twin beds into a single, larger sleeping space when desired. The rear of the 70X pulls double duty as a lounge and bedroom with a sofa/bed that lays flat for your sleeping comfort. With a Murphy+ Bed in the front slideout of the 70M, the rear of the coach can accommodate a roomy full-size bathroom with a wide Corian countertop and a dedicated shower.



70M Storage



70M Bathroom



70M Shower



Dash

The Era is built on one of the most driver-friendly platforms in the RV market: the Mercedes-Benz® Sprinter chassis. Already stacked with safety features such as 4-wheel ABS brakes and airbags, you can add the available Collision Avoidance System with a windshield-mounted camera, display monitor, and available Bluetooth connectivity. The 70A and 70X can also be upgraded with on-demand 4WD to tackle rough terrain and snow with ease. You will be equipped with a 6" LCD color touch screen for the rearview camera and controls for the cab stereo. Upgrade to the large 9" touch screen Infotainment Center with Rand McNally RV GPS for turn-by-turn voice navigation and additional sound system components that sound incredible on the available JBL® Premium Sound speakers.



70M Swivel Cab Seats Reclined



Powered Mirror with Defrost and Turn Signal





70M Powered Patio Awning with LED Lighting



Exterior Service Center



Alcoa Alloy Wheel


Era owners demand versatility, which is why the rear double doors open 270° for loading and unloading large items. The 70A also includes a rear slideout compartment tray beneath the coach. A sliding screen door in the rear (70A, 70X) and the built-in screen in the side entrance door provide excellent cross-coach ventilation while keeping bugs out. If you prefer to be one with nature, a powered patio awning with LED lighting and built-in exterior speakers make your time outdoors more enjoyable.



70M Side Screen Door

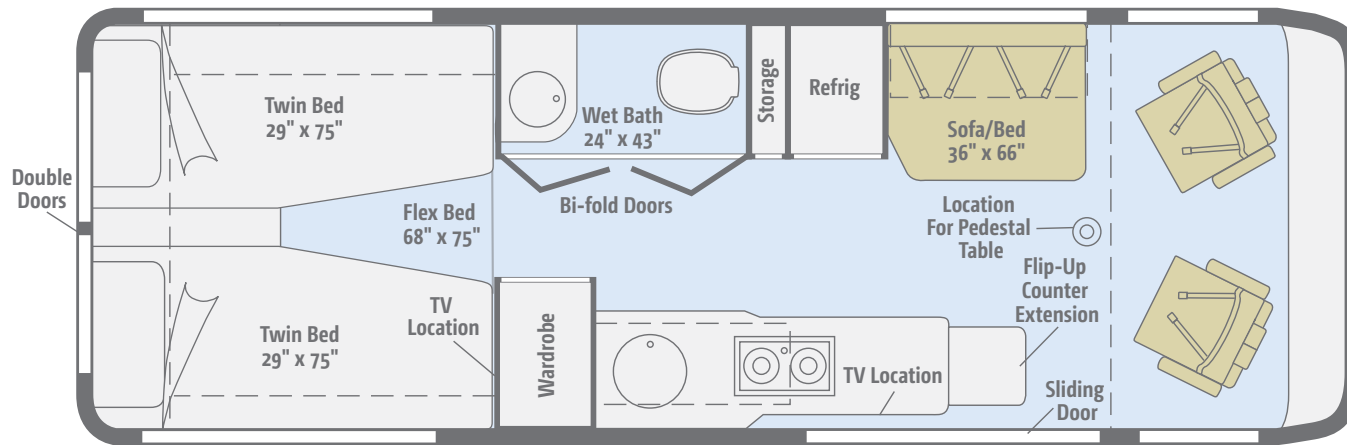


70M Rear Doors

 Click here to explore this floorplan's web page.

## 70A

Travel smarter with custom features such as the movable pedestal table for the lounge and rear twin beds featuring the Flex Bed system with deluxe FROLI springs.

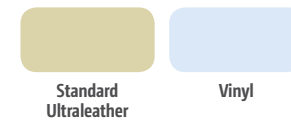
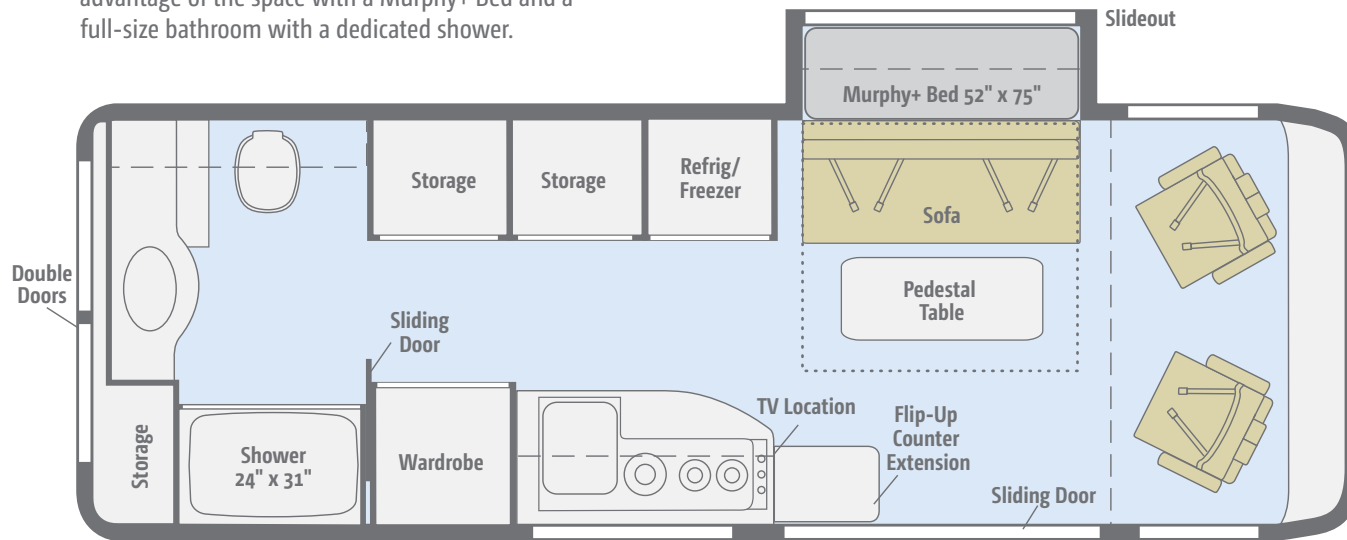




 Click here to explore this floorplan's web page.

## NEW 70M

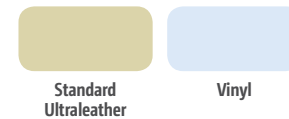
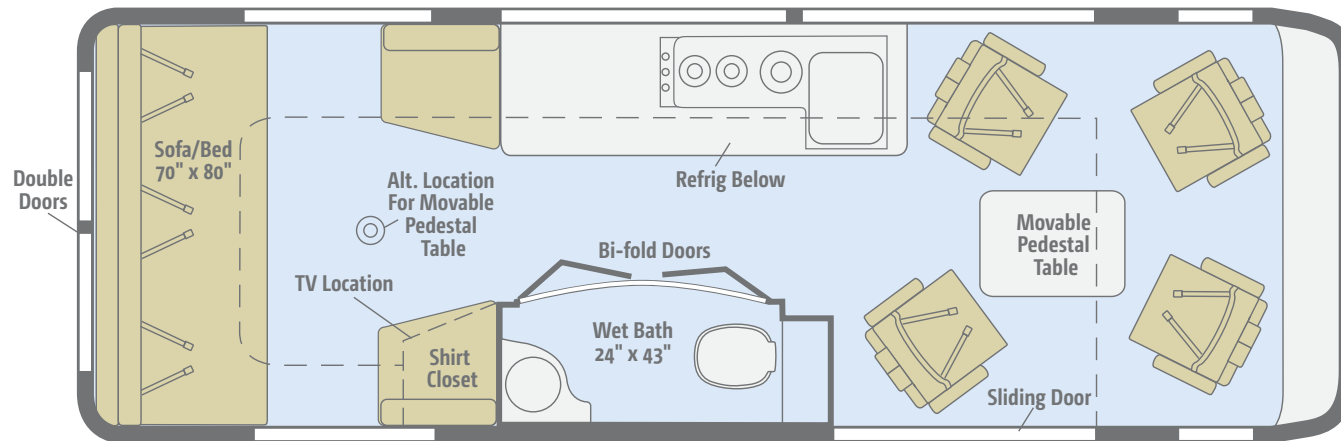
The unique Class B coach with a slideroom takes full advantage of the space with a Murphy+ Bed and a full-size bathroom with a dedicated shower.



 Click here to explore this floorplan's web page.

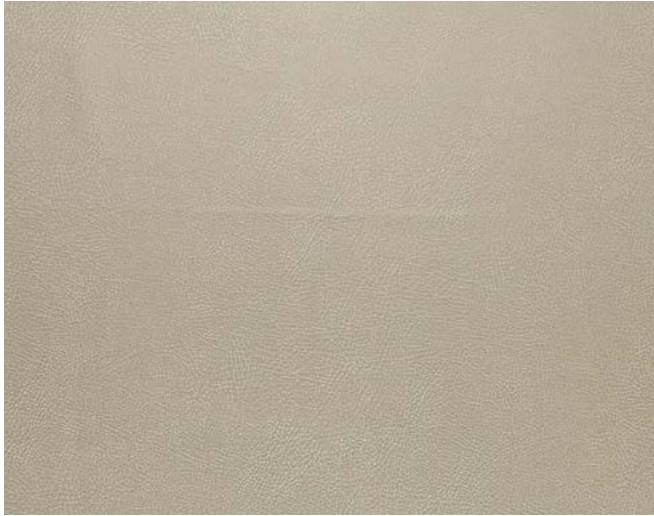
## 70X

With a sofa/bed and four captain's chairs, the 70X seats up to seven adults. Expansive windows make it one of the most open-feeling Class B vans on the road.



Choose from two fabric collections and two wood finishes.

## Paragon



Ultraleather



Bed Cover  
(70A)



Bed Cover  
(70M)



Corian Countertop



Vinyl Flooring

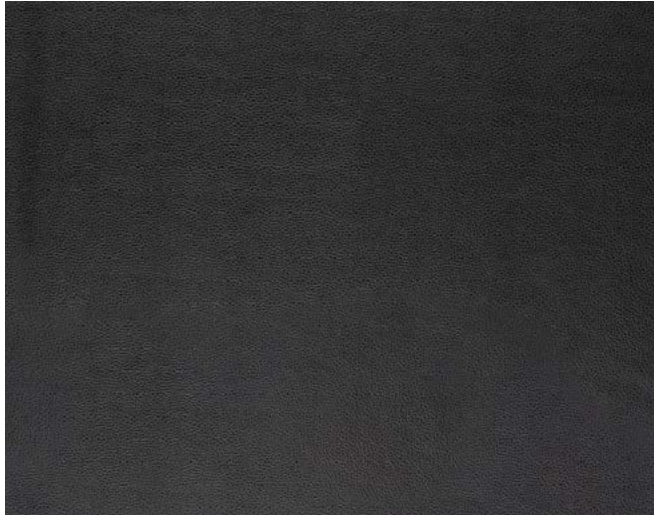


Smoke with High-Gloss  
Dark Canvas

Winnebago® reserves the right to change décor materials and specifications without notice or obligation. Décor is also available online at [WinnebagoInd.com](http://WinnebagoInd.com).

Choose from two fabric collections and two wood finishes.

## Masterpiece



Ultraleather



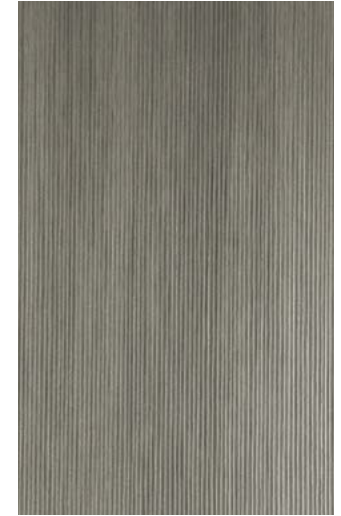
Bed Cover  
(70A)



Bed Cover  
(70M)



Corian Countertop



Vinyl Flooring



High-Gloss  
Onyx Woodgrain

Winnebago® reserves the right to change décor materials and specifications without notice or obligation. Décor is also available online at [WinnebagoInd.com](http://WinnebagoInd.com).

Choose from two exterior options for your Era.



**Graphite Gray**  
(Not available in Canada)



**Brilliant Silver**

Weights & Measures	70A	70M	70X
Length	24'3"	24'3"	24'3"
Exterior Height <sup>1</sup>	9'8" <sup>A</sup> /9'10" <sup>B</sup>	9'8" <sup>A</sup>	9'8" <sup>A</sup> /9'10" <sup>B</sup>
Exterior Width	6'4"	6'4"	6'4"
Awning Length	13'	13'	13'
Interior Height	6'3"	6'3"	6'3"
Interior Width	5'10"	5'10"	5'10"
Freshwater Tank Capacity <sup>2</sup> (gal.)	25	44	25
Water Heater Capacity (gal.)	2.6	2.6	2.6
Holding Tank Capacity - Black/Gray <sup>2</sup> (gal.)	8/26	22/25	9/19
LP Capacity <sup>3</sup> (gal.)	16	9.5	16
Fuel Capacity (gal.)	26.4	26.4	26.4
GCWR <sup>4</sup> (lbs.)	15,250	15,250	15,250
GVWR (lbs.)	11,030	11,030	11,030
GAWR - Front (lbs.)	4,410	4,410	4,410
GAWR - Rear (lbs.)	7,720	7,720	7,720
Wheelbase	170"	170"	170"
Seating Capacity	4	4	7

<sup>A</sup> Standard Chassis    <sup>B</sup> Optional 4WD Chassis

## Mercedes-Benz® Sprinter Chassis

3.0L 6-cylinder, 188-hp, diesel engine, 5-speed automatic Tip Shift transmission, 220-amp. alternator

4-wheel ABS brakes

Stainless steel wheel liners

Trailer Hitch<sup>4</sup> 5,000-lb. drawbar/500-lb. maximum vertical tongue weight

7-pin wiring connector

### OPTIONAL EQUIPMENT

On demand 4WD w/Hi/Lo Range (only available with Brilliant Silver exterior) (70A, 70X)

Stylized chrome wheels

Alcoa forged aluminum alloy wheels

## Cab Conveniences

Radio/Rearview Monitor System 6" LCD color touch screen, remote, iPod®/MP3 input, color rear camera

Chassis/coach battery radio power switch

Cab seats armrests, adjustable lumbar support, adjustable headrest, and slide/swivel/recline

3-point seat belts

Dual airbags

Cruise control

Power steering w/tilt wheel

Power mirrors w/defrost and turn signal

Power door locks w/remote

Power windows

12-volt powerpoints

Sunvisors

Pleated, sliding front window blinds

Folding privacy screens for cab door windows

Carpet floor mat

Appliqué package

Keyless entry w/remote

### OPTIONAL EQUIPMENT

Large Screen Infotainment Center with Rand McNally RV GPS 9" touch screen color monitor w/split screen function, Rand McNally RV GPS safe & easy routing, tools & amenities, trips & content, turn-by-turn voice guidance, AM/FM radio w/handheld remote, SiriusXM® (includes 90-day trial subscription), iPod®/iPhone® audio integration, Bluetooth®, color rearview camera

Collision avoidance system windshield-mounted camera, display monitor, available Bluetooth connectivity

JBL® Premium Sound Speakers

## Interior

24" HDTV and coach stereo system w/AM/FM radio, Bluetooth, CD/DVD player, alarm clock, remote

Jack® Digital HDTV antenna

LED ceiling lights w/dimmer switch

MCD blackout roller shades

Soft vinyl ceiling

Tinted coach windows

Powered ventilator fan (bath 70M; galley 70A, 70X)

Skylight/roof vent (70M)

Powered roof vent (bath 70A, 70X)

Powered sofa/bed (70X)

Murphy+ Bed (70M)

Removable companion seats w/swivel and slide (70X)

Systems monitor panel

Multiplex wall switches

Mirror

USB charger

## Galley

Flip-up countertop extension (70A, 70M)

Corian® solid-surface countertop

Decorative backsplash (70M)

Microwave oven w/touch control (70A)

Microwave convection oven w/touch control (70M, 70X)

2-burner range top w/glass cover (70A)

3-burner range w/glass top and stainless steel sink w/bamboo cover (70M, 70X)

Refrigerator/freezer (w/removable freezer unit on 70A) (70A, 70X)

2-door 6 cu. ft. compressor driven refrigerator/freezer (70M)

Stainless steel sink w/folding faucet and glass cover (70A)

Cold water filtration system

## Bath

Corian solid-surface countertop (70M)

Flexible showerhead

Shower curtain (70A, 70X)

Textured glass shower door (70M)

Toilet w/foot pedal and sprayer

Skylight (70M)

Tissue holder

Towel bar (70M)

Towel ring (70M)

Stainless steel sink (70A, 70X)

Shower w/wall surround 24"x31" (70M)

Wet Bath 24"x43" (70A 70X)

## Bedroom

Twin beds w/Flex Bed System (70A)

24" HDTV w/remote (70A)

Wardrobe

## Exterior

**Side screen door**

**Rear screen door** (70A, 70X)

**Powered patio awning** w/LED lighting

**Slideout compartment tray** (access from rear door) (70A)

**Porch light** w/interior switch

**Running boards, rocker trim** w/mud guard

**Rear mud guards**

**Exterior speaker system**

**Rear storage compartment** (70M)

### OPTIONAL EQUIPMENT

Polished stainless steel rocker panel trim

## Heating & Cooling System

**13,500 BTU low-profile high-efficiency roof air conditioner**

**Truma Combi Eco Plus Heating System** w/(2) 850-watt electric heating elements

## Electrical System

**AC/DC load center/converter**

**Auxiliary start circuit**

**2-deep cycle Group 31 batteries** (AGM maintenance free)

**Coach battery disconnect system**

**Dual-battery charge system**

**45-amp. converter/charger**

**30-amp. power cord**

**Exterior TV jack**

**Exterior AC receptacles**

**Exterior DC receptacles** (70A, 70X)

**2,500-watt Cummins Onan® MicroQuiet™ LP generator**

### OPTIONAL EQUIPMENT

100-watt solar panel/battery charger (70M)

200-watt solar panel/battery charger (70A, 70X)

## Plumbing System

**Exterior Service Center** city water hookup/tank diverter valve, drainage valves, sewer hose (w/shut-off 70X) valve and exterior wash station w/pump switch

**TrueLevel™ holding tank monitoring system**

**Winterization Package** water heater bypass valve and siphon tube

**On-demand water pump**

**12-volt macerator sewage pump** (70X)

**Permanent-mount LP tank** w/gauge

**LPG accessory connection**

**Holding tank flushing system**

## Safety

**Child seat tether anchors** (sofa and companion seats 70X)

**LP, smoke, and carbon monoxide detectors**

**10 BC fire extinguisher**

**Ground fault interrupter**

**Daytime running lamps**

**High-mount brake lamp**

## Warranty<sup>5</sup>

**12-month/15,000-mile basic limited warranty<sup>6</sup>**

1. The height of each model is measured to the top of the tallest standard feature and is based on the curb weight of a typically equipped unit. The actual height of your vehicle may vary by several inches depending on chassis or equipment variations. Please contact your dealer for further information.
2. Capacities are based on measurements prior to tank installation. Slight capacity variations can result due to installation applications.
3. Capacities shown are tank manufacturer's listed water capacity (W.C.) Actual filled LP capacity is 80% of listing due to overfilling prevention device on tank.
4. Actual towing capacity is dependent upon your particular loading and towing circumstances, which includes the GVWR, GAWR and GCWR as well as adequate trailer brakes. Please refer to the Operator's Manual of your vehicle for further towing information.
5. See separate chassis warranty.
6. See your dealer for complete warranty information.

NA Not Available

Not all items available in combination. See dealer for details.

Winnebago's\* continuing program of product improvement makes specifications, equipment, model availability, and prices subject to change without notice. Published content reflects the most current product information at time of printing. Please consult your dealer for individual vehicle features and specifications.





Let us host  
your next

# Adventure



[WGOAdventures.com](http://WGOAdventures.com)



Show your Winnebago love  
with high-quality gifts and wearables.



Apparel | Gifts | Parts | Gear

[WinnebagoOutdoor.com](http://WinnebagoOutdoor.com)

Find your style



Connect with Winnebago (Click one of the following)



Like us



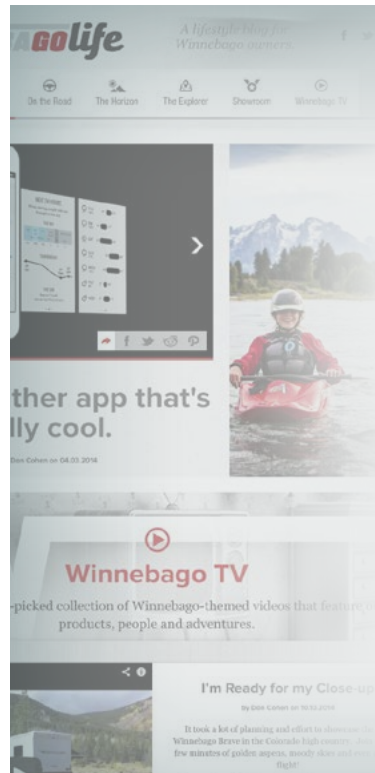
Follow us



Watch us

## WinnebagoInd.com Has All The Answers

Visit [WinnebagoInd.com](http://WinnebagoInd.com) on your computer, smartphone, or tablet for the latest product information and updates.



## Welcome to GoLife!

Visit our lifestyle blog for motorhome news, personal travelogues, and community stories.

[WinnebagoLife.com](http://WinnebagoLife.com)

# GoLife



# **PREFERRED CARE PROGRAM**

We back our motorhomes with best-in-class support both before *and* after the sale:



- 12-month/15,000-mile basic limited warranty
- Complimentary 24-hour roadside assistance program
- TripSaver® Fast Track Parts guarantees that in-stock warranty parts ship directly to your dealer within 24 hours
- National dealer service network



For more information, visit us  
[WGOService.com](http://WGOService.com)



From RV to personal insurance, Winnebago RV Insurance can provide all the coverage and services you need to feel at home on the road.

**For more information:**  
**(800) 642-4892**



## CONTACT US

### GENERAL INQUIRIES

Corporate Switchboard  
(641) 585-3535

### CURRENT PRODUCT OWNER AND SERVICE-RELATED INQUIRIES

(800) 537-1885  
or [winnebagoind.com](mailto:winnebagoind.com)

### NEW VEHICLE SALES INQUIRIES

[sales@winnebagoind.com](mailto:sales@winnebagoind.com)

### FAX

(641) 585-6966

### POSTAL ADDRESS

Winnebago Industries, Inc.  
P.O. Box 152  
Forest City, IA 50436

### STREET ADDRESS

Winnebago Industries, Inc.  
605 West Crystal Lake Road  
Forest City, IA 50436



## Join the Club, Join the Fun

Here's the perfect way to begin your life on the road as the owner of a new Winnebago – by joining the exclusive WIT Club. Start your adventure with other fun-loving WIT Club members from across the country and get the most out of your new Winnebago motorhome.



### Members enjoy:

- Caravans and rallies
- Newsletters
- Local and state group activities
- RV travel benefits

See more at  
[WITClub.com](http://WITClub.com)



## Grand National Rally

Each year, thousands of Winnebago owners descend upon Forest City, Iowa. Rally-goers enjoy an unforgettable week reconnecting with friends, taking tours, participating in activities, and more. Join the adventure next July!