

Customizable comfort  
for the perfect fit.



# SPIRIT

QUALITY INNOVATION SERVICE

**WINNEBAGO**



**On the Cover:** Suede Full-Body Paint  
**Interior:** 31K Lennon with Charcoal with Driftwood Cabinetry



The comfortable U-shaped dinette (NA 25B) accommodates a crowd, and converts to a comfortable bed for added sleeping capacity.



Available Theater Seating (26T, 31H, 31K) features individually operated recliners and footrests, and provides optimal viewing for the 32" HDTV.



The Spirit's huge exterior trunk compartment means you can bring along larger items with ease.

## Family-Friendly Adventure To Go.

Long a favorite with families of all kinds, the Winnebago® Spirit® returns with a new 26T floorplan, an upgraded chassis and new features to make your RVing adventures better than ever.

Six floorplans, from 23'10" to 32'9", provide a variety of layouts, sleeping accommodations and storage configurations. Built on the proven Ford® E-350/E-450 chassis, the Spirit is now powered by a 7.3L V-8 producing 350 horsepower and 468 lb.-ft. of torque. A new standard second coach battery and 1,000-watt inverter provide extra power in camp.



The heart of every Spirit is its comfortable, multi-use lounge. A large U-shaped dinette (except 25B) is ideal for dining, games, working, or taking in a movie on the 32" HDTV. On the 31K, our available TrueComfort+™ sofa/bed opens to a double bed (58" x 74") for superb sleeping, while serious movie buffs will opt for the available theater seating (26T, 31H, 31K) with individually operated recliners and footrests. The Spirit's large tinted windows offer great visibility in camp and on the road, and the standard blackout roller shades provide privacy when you want it.



Sofa/bed



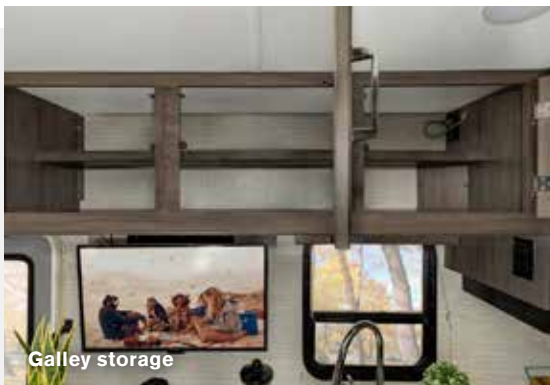
U-shaped dinette



Multi-use lounge



A big advantage of RV travel is the ability to cook your own meals, and the well-designed, well-equipped Spirit galley makes meal prep a treat. Corian® solid surface countertops and the stainless steel sink set an upscale tone, the double-door refrigerator/freezer keeps things cool, and the three-burner range with glass cover (N/A 22R), oven and microwave handle cooking duties.



Galley storage



Refrigerator



Three-burner range



Stainless steel sink



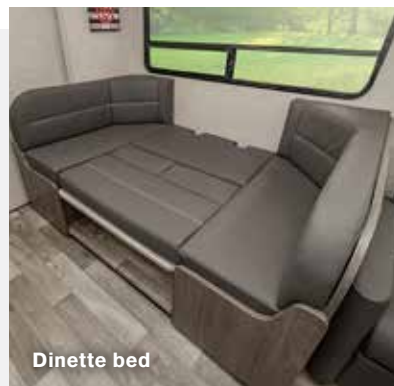
Pantry drawers



Your Spirit provides comfortable sleeping quarters for all at the end of the day. The large (57" x 95") cabover bunk is always a favorite, while the dinette and sofa/bed (N/A 22M, 22R) provide added sleeping capacity. Got a full house? With its included bunk beds, the 31H sleeps eight! Each Spirit floorplan features a rear bedroom with a comfy double or queen bed, wardrobe, and your own 24" HDTV. Each floorplan includes a large bath with shower and flexible showerhead, powered roof vent, lavatory and medicine cabinets, skylight, towel bar(s) and robe hook(s).



Cabover bunk



Dinette bed



Bathroom



Shower with skylight



Vanity



Drivers will feel right at home in the Spirit cab. The exceptional cab view is supplemented by side mirrors with defrost and video cameras, and the oversized 8.95" anti-glare touchscreen makes everything easy to see at a glance. Additional standard safety features include Ford's Electronic Stability Control, which can apply selective braking automatically to prevent sliding sideways or skidding; Hill Start Assist, which helps prevent backward rolling while you transition from brake to accelerator; and Traction Control, which keeps wheels from excessively spinning in order to maintain traction.

Winnebago is the only conventional Class C manufacturer to offer the NEW Smart Driver-Assist Technology Package. These features, including Automatic Emergency Braking, Lane Departure Warning, and Adaptive Cruise Control, coupled with the standard safety features, help ensure that you and your family can safely cruise to your next destination.



Reclining cab seats



Radio/rearview monitor system



Cab privacy curtains



Deciding between the two attractive graphics packages and two full-body paint options might be tough, but kicking back in camp is easy. A push of a button deploys or retracts the powered patio awning with LED lighting, and the large lighted trunk means no more fumbling around in the dark for your gear. Open the screened door, let the breeze in, and let your Spirit shine.



Awning lights



Entrance door

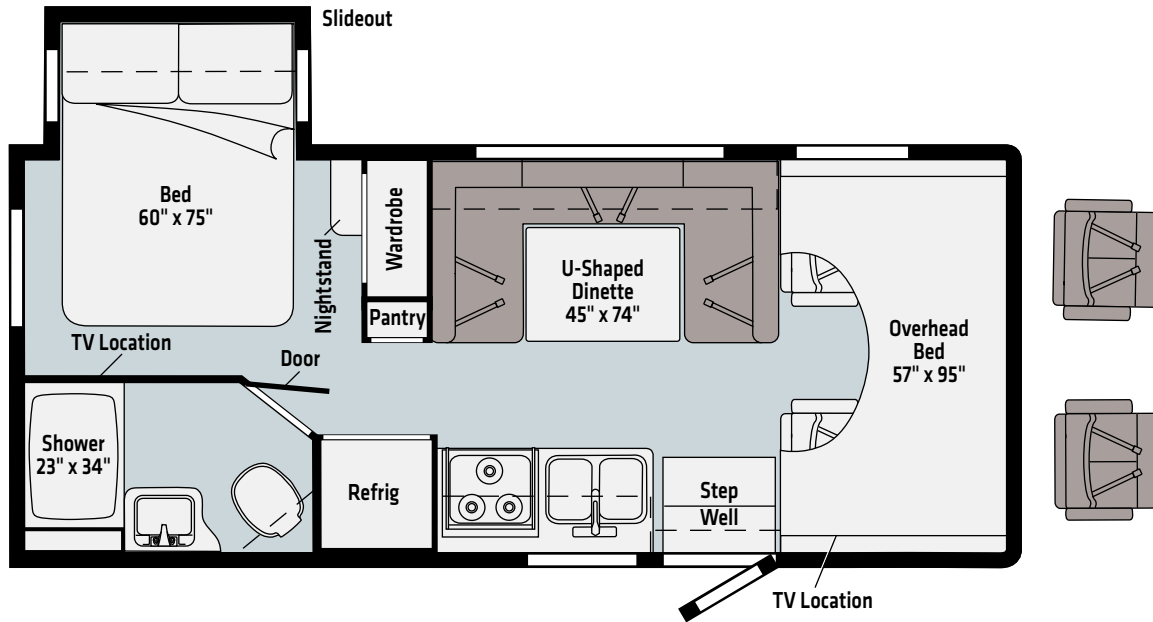


Exterior rear storage



Stainless steel wheel liners

22M



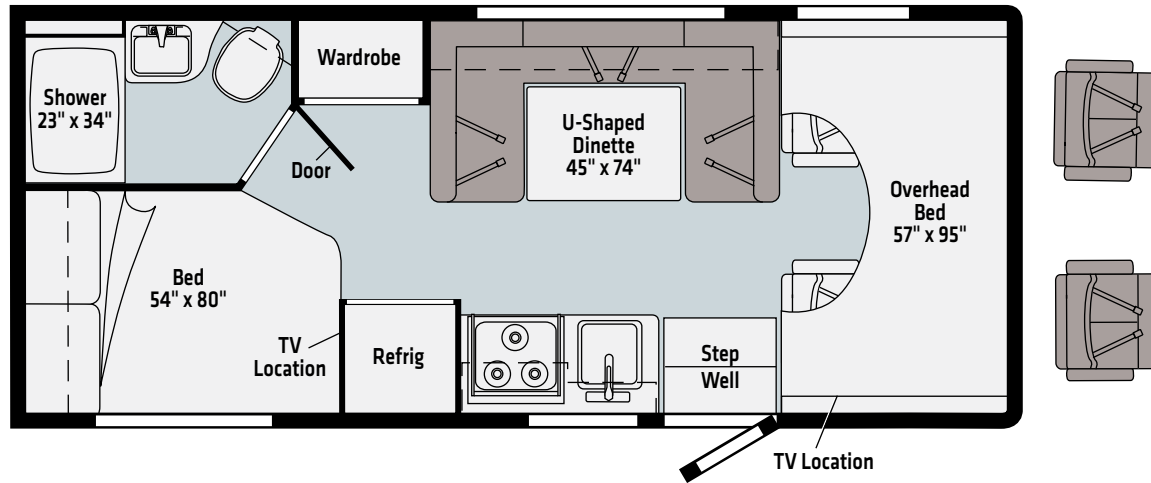
- Ultrafabrics  
UF2 Premium  
Leatherette
- Vinyl

Dashed lines denote overhead storage areas. Floorplans and specifications are also available online at [Winnebago.com](http://Winnebago.com)





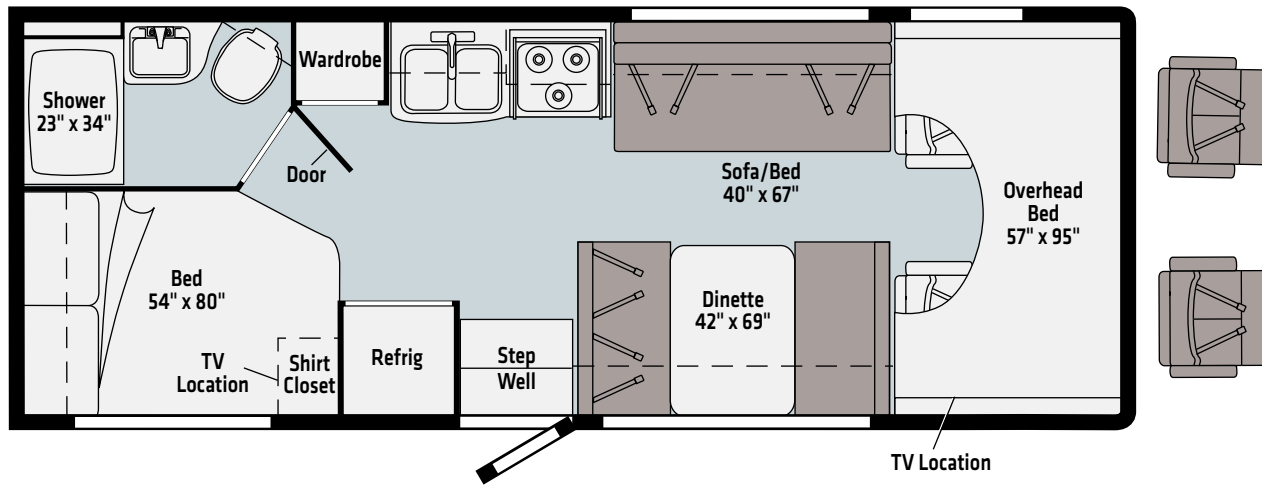
**22R**



- Ultrafabrics  
UF2 Premium  
Leatherette
- Vinyl

Dashed lines denote overhead storage areas. Floorplans and specifications are also available online at [Winnebago.com](http://Winnebago.com)

**25B**



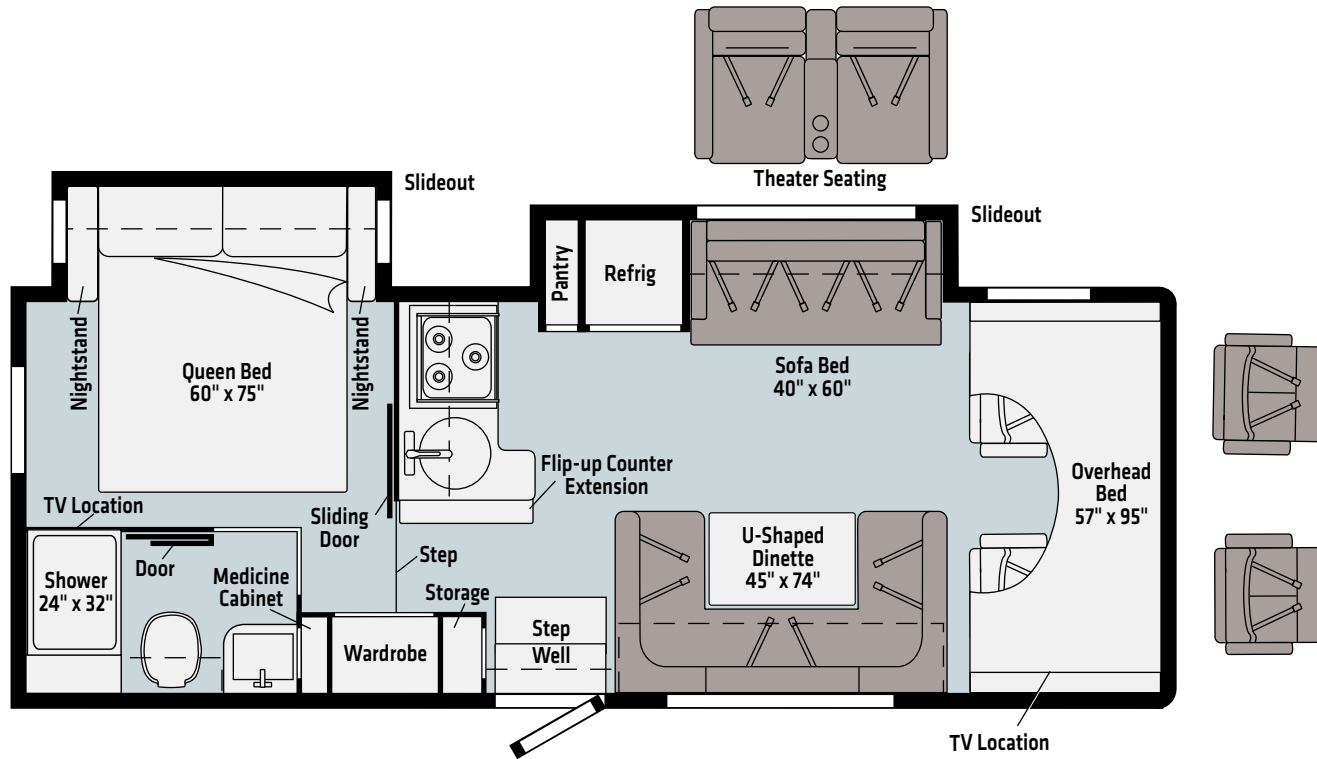
Ultrafabrics  
UF2 Premium  
Leatherette

Vinyl

Dashed lines denote overhead storage areas. Floorplans and specifications are also available online at [Winnebago.com](http://Winnebago.com)



**NEW**  
**26T**



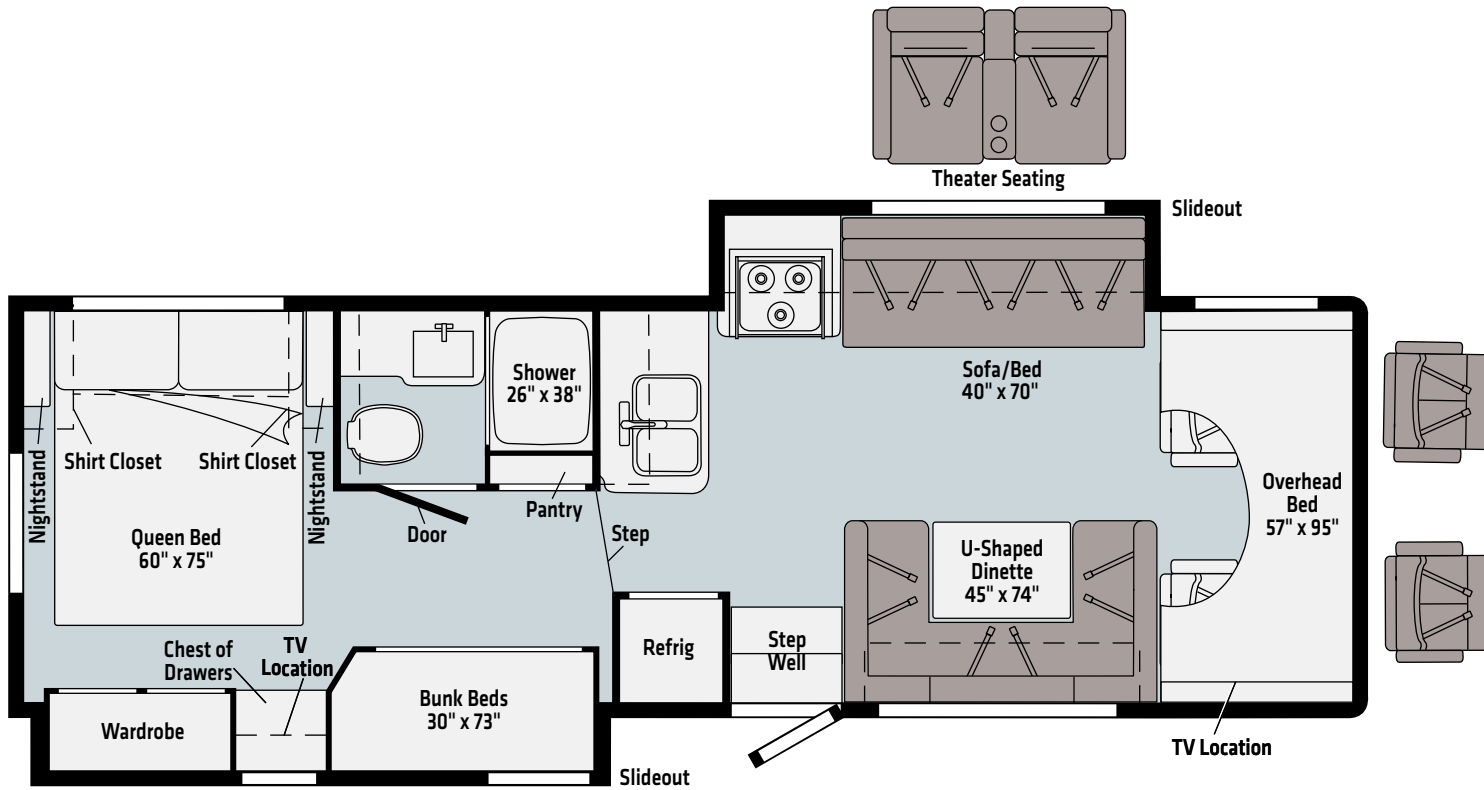
Ultrafabrics  
UF2 Premium  
Leatherette

Vinyl

Dashed lines denote overhead storage areas. Floorplans and specifications are also available online at [Winnebago.com](http://Winnebago.com)



# 31H

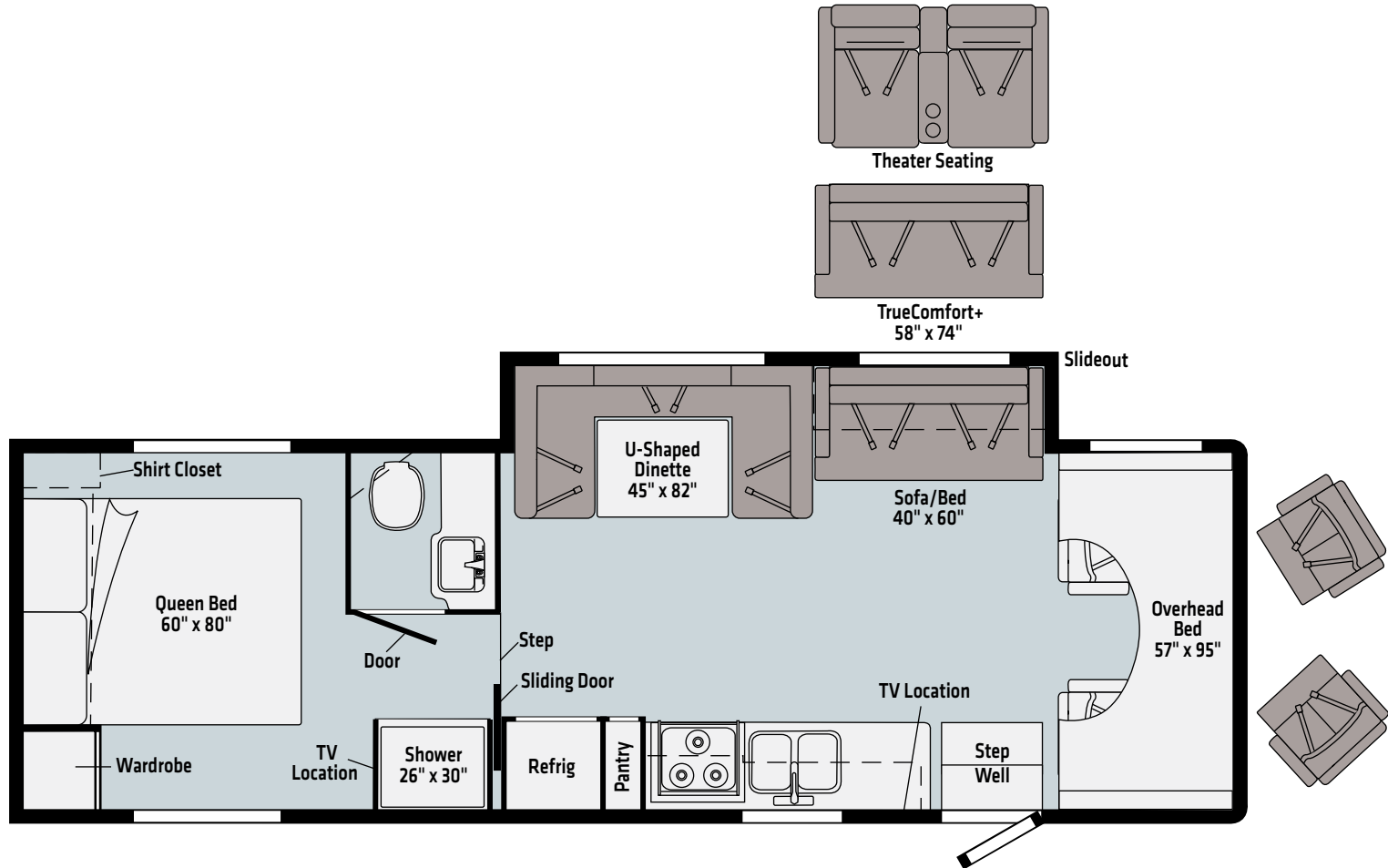


- Ultrafabrics  
UF2 Premium  
Leatherette
- Vinyl

Dashed lines denote overhead storage areas. Floorplans and specifications are also available online at [Winnebago.com](http://Winnebago.com)



# 31K



Ultrafabrics  
UF2 Premium  
Leatherette

Vinyl

Dashed lines denote overhead storage areas. Floorplans and specifications are also available online at [Winnebago.com](http://Winnebago.com)



**Catalina**  
DELUXE GRAPHICS



**Chestnut**  
DELUXE GRAPHICS



**Cool Mist**  
FULL-BODY PAINT



**Suede**  
FULL-BODY PAINT

## Starr



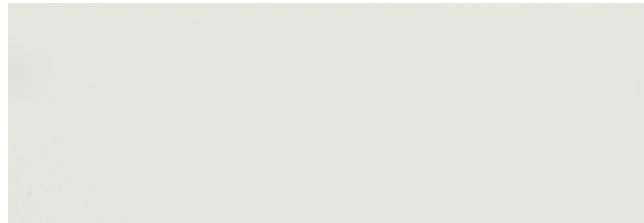
Ultrafabrics UF2 Premium Leatherette



Wall Board



Bed Cover



Countertop



Vinyl Flooring

## Wood



Walnut

*Winnebago® reserves the right to change décor materials and specifications without notice or obligation.*

## Lennon with Charcoal



Ultrafabrics UF2 Premium Leatherette



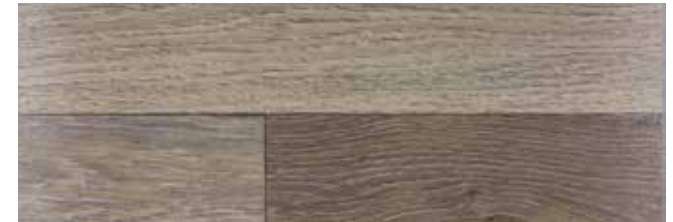
Wall Board



Bed Cover



Countertop



Vinyl Flooring

## Wood



Driftwood II

*Winnebago® reserves the right to change décor materials and specifications without notice or obligation.*



## Lennon with Medium Gray



Ultrafabrics UF2 Premium Leatherette



Wall Board



Bed Cover



Countertop



Vinyl Flooring

## Wood



Driftwood II

*Winnebago® reserves the right to change décor materials and specifications without notice or obligation.*



WEIGHTS   MEASURES	22M	22R	25B	26T	31H	31K
<b>Length</b>	24'5"	23'10"	26'4"	28'5"	32'9"	32'9"
<b>Exterior Height<sup>1</sup></b>	10'11" <sup>A</sup> /11' <sup>B</sup>	10'11" <sup>A</sup> /11' <sup>B</sup>	11'	11'	11'	11'
<b>Exterior Width<sup>2</sup></b>	8'5.5"	8'5.5"	8'5.5"	8'5.5"	8'5.5"	8'5.5"
<b>Exterior Storage<sup>3</sup> (cu. ft.)</b>	44.5	60.4	73.1	45	85	108.3
<b>Awning Length</b>	14'	14'	17'	17'	10'4"	20'
<b>Interior Height</b>	6'10"/6'5.5"*	6'10"	6'10"	6'10"/6'5.5"*	6'10"/6'5.5"*	6'10"/6'5.5"*
<b>Interior Width</b>	8'	8'	8'	8'	8'	8'
<b>Freshwater Tank Capacity<sup>4</sup> (gal.)</b>	40	40	40	44	44	44
<b>Water Heater Capacity (gal.)</b>	6	6	6	6	6	6
<b>Holding Tank Capacity-Black/Gray<sup>4</sup> (gal.)</b>	40/45	21/24	21/26	35/41	37/34	30/30
<b>LP Capacity<sup>5</sup> (lbs.)</b>	76.14	76.14	76.14	76.14	76.14	76.14
<b>Fuel Capacity (gal.)</b>	55	55	55	55	55	55
<b>GCWR<sup>6</sup> (lbs.)</b>	18,500 <sup>A</sup> /22,000 <sup>B</sup>	18,500 <sup>A</sup> /22,000 <sup>B</sup>	22,000 <sup>B</sup>	22,000 <sup>B</sup>	22,000 <sup>B</sup>	22,000 <sup>B</sup>
<b>GVWR (lbs.)</b>	12,500 <sup>A</sup> /14,500 <sup>B</sup>	12,500 <sup>A</sup> /14,500 <sup>B</sup>	14,500 <sup>B</sup>	14,500 <sup>B</sup>	14,500 <sup>B</sup>	14,500 <sup>B</sup>
<b>GAWR - Front (lbs.)</b>	5,000	5,000	5,000	5,000	5,000	5,000
<b>GAWR - Rear (lbs.)</b>	8,500 <sup>A</sup> /9,600 <sup>B</sup>	8,500 <sup>A</sup> /9,600 <sup>B</sup>	9,600 <sup>B</sup>	9,600 <sup>B</sup>	9,600 <sup>B</sup>	9,600 <sup>B</sup>
<b>Wheelbase</b>	158"	158"	182"	190"	220"	220"

\* Rear of Coach    <sup>A</sup> Ford E350 Chassis    <sup>B</sup> Ford E450 Chassis

## Chassis

**Ford® E350 Chassis** 350-hp 7.3L V8 Premium Engine, TorqShift 6-speed automatic transmission w/overdrive, 210-amp. alternator (22M, 22R)

**Ford E450 Chassis** 350-hp 7.3L V8 Premium Engine, TorqShift 6-speed automatic transmission w/overdrive, 210-amp. alternator (25B, 26T, 31H, 31K)

### 4-wheel ABS

**Rear auxiliary springs** (26T, 31H, 31K)

**Trailer hitch<sup>6</sup>** 7,500-lb. drawbar/500-lb. maximum vertical tongue weight

**Stainless Steel wheel liners and valve extenders**

## OPTIONAL EQUIPMENT

**Ford E450 Chassis** 350-hp 7.3L V8 Premium Engine, TorqShift 6-speed automatic transmission w/overdrive, 210-amp. alternator (22M, 22R)

**Hydraulic leveling jacks** (front and rear) (26T, 31H, 31K)

**Electric stabilizing jacks** (22M, 22R, 25B)

**Spare tire**

## Cab Conveniences

**Cab seats** armrests, fixed lumbar support, and multi-adjustable slide/recline

**3-point seat belts**

**Airbags** driver and passenger

**12-volt powerpoint**

**Power steering** w/tilt and cruise control

**Power door locks**

**Sunvisors**

**Radio/Rearview monitor system** w/integrated 8.95" multi-function touchscreen monitor and rear color camera, Bluetooth®, Apple CarPlay®, Android Auto™ and Sirius XM® ready (requires available receiver w/antenna upgrade)

**Mirrors** w/defrost, remote and video camera

**Cab mat**

**Remote keyless entry**

**Auto headlight control**

**Electronic stability control**

**Hill start assist**

**Traction control**

**Adaptive cruise control**

**Automatic emergency braking**

**Auto high beam control**

**Distance alert**

**Driver monitoring**

**Forward collision warning**

**Lane departure warning**

**Post-collision braking**

**Tire pressure monitoring**

## OPTIONAL EQUIPMENT

**Swivel cab seat pedestal** (31K) (driver and passenger)

## Interior

**Amplified digital HDTV antenna**

**MCD® Roller Shades** (lounge, dinette, and bedroom)

**Mini blinds** (galley/bath)

**Systems monitor panel**

**Roof vent** (bedroom and front bunk area)

**Front wraparound curtain**

**Tinted windows**

**Vinyl ceiling**

**USB charger** (dinette and bedroom)

**LED lighting**

**32" HDTV w/DVD player**

**Vinyl flooring throughout**

**Sofa/bed** (25B, 26T, 31H, 31K)

**Assist bar**

**Dream dinette table mechanism** (25B)

## OPTIONAL EQUIPMENT

**Dual-glazed, thermo-insulated windows**

**Sofa sleeper** (31K)

**Theater seating** (26T, 31H, 31K)

## Galley

**Corian® Solid Surface Countertops**

**Microwave oven** w/touch control

**Vented range hood** w/light

**3-burner range** w/glass cover (NA 22R), and oven

**Pantry** (22M, 26T, 31H, 31K)

**Double-door refrigerator/freezer** w/woodgrain paneling (22M, 22R, 25B)

**Large double-door refrigerator/freezer** w/woodgrain paneling (26T, 31H, 31K)

**Single stainless steel sink** (22R, 26T)

**Double stainless steel sink** (22M, 25B, 31H, 31K)

**Flip-up counter extension** (26T)

## Bath

**Shower 23"x 34"** (22M, 22R, 25B)

**Shower 24"x 32"** (26T)

**Shower 26"x 30"** (31K)

**Shower 26"x 38"** (31H)

**Lavatory cabinet**

**Medicine cabinet**

**Shower** w/wall surround

**Shower door** w/textured glass (31K)

**Shower door** w/retractable screen (22M, 22R, 25B, 26T, 31H)

**Flexible showerhead**

**Skylight**

**Powered roof vent**

**Toilet** w/foot pedal

**Tissue holder**

**Robe hook(s)**

**Towel bar(s)**



## Bedroom

**Double bed** w/foam mattress, headboard and mattress cover (22R, 25B)

**Queen bed** w/foam mattress, headboard, and mattress cover (22M, 26T, 31H, 31K)

**Bunk beds** w/covered foam mattresses, mattress covers, storage compartment, and privacy curtains (31H)

**Wardrobe** (22M, 22R, 25B, 26T)

**24" HDTV**

## Exterior

**Premium high-gloss fiberglass skin**

**Porch light** w/interior switch

**Running boards**

**Large lighted trunk storage compartment**

**Powered patio awning** w/LED lighting

**Molded front cap**

**Ladder**

## Heating & Cooling

**20,000 BTU furnace** (22M, 22R, 25B)

**30,000 BTU furnace** (26T, 31H, 31K)

**15,000 BTU air conditioner**

## Electrical System

**AC/DC load center, 55-amp. converter/charger**

**30-amp. power cord**

**TV jack and AC receptacle near entrance door**

**Coach battery disconnect system**

**Automatic dual-battery charge control  
4,000-watt Cummins Onan® Microquiet generator**

**2-deep cycle, Group 24 battery**

**Auxiliary start circuit**

**AC/DC 1,000-watt inverter**

## Plumbing System

**Pressurized city water hookup w/tank fill**

**On-demand water pump**

**6-gallon LP water heater w/electronic ignition**

**Heated drainage system**

**Holding tank flushing system** (Black tank only)

**Permanent-mount LP tank w/gauge**

## Safety

**LP, smoke, and carbon monoxide detectors**

**Fire extinguisher**

**Ground fault interrupter**

**Child seat tether anchor**

## Warranty<sup>7</sup>

**12-month/15,000-mile basic limited warranty<sup>8</sup>**

**36-month/36,000-mile limited warranty on structure<sup>8</sup>**

**10-year limited parts-and-labor warranty on roof skin<sup>8</sup>**

### FOOTNOTES

1. The height of each model is measured to the top of the tallest standard feature and is based on the curb weight of a typically equipped unit. The actual height of your vehicle may vary by several inches depending on chassis or equipment variations. Contact your dealer for further information.
2. Floorplans feature a wide-body design - over 96"! You should be aware that some states restrict access on some or all state roads to 96" in body width. You should confirm the road usage laws in the states of interest to you.
3. The load capacity of your motorhome is designated by weight, not by volume, so you cannot necessarily use all available space when loading your motorhome.
4. Capacities are based on measurements prior to tank installation. Slight capacity variations can result.
5. Capacities shown are the tank manufacturer's listed water capacity (W.C.). Actual filled propane capacity is 80% of listing due to overfilling prevention device on tank.
6. Actual towing capacity is dependent on your particular loading and towing circumstances which includes the GVWR, GAWR, and GCWR as well as adequate trailer brakes. Refer to the chassis operator's manual of your motorhome for further towing information.
7. See separate chassis warranty.
8. See your dealer for complete warranty information.

Not all items available in combination. See dealer for details.

Because features, specifications, equipment, and options may vary from those highlighted in this brochure, the buyer is responsible for confirming with the dealer the features, specifications, equipment, and options included on their specific vehicle. In addition, Winnebago's program of continuous product improvement may result in changes to vehicle specifications, equipment, model availability, and price without notice.