

# Journey

**WINNEBAGO**<sup>TM</sup>



## *Why Journey?*

- Unmatched performance of the exclusive Maxum Chassis<sup>®</sup>
- Larger Contour<sup>™</sup> frameless dual-pane windows to enhance natural light
- Ultraleather<sup>™</sup> cab seats and lounge furniture
- MCD solar/blackout roller shades
- TrueAir<sup>®</sup> Maximum Comfort air conditioning
- Expansive exterior storage
- Premier clearcoat automotive-finish full-body paint
- Powered patio awning with motion sensor and LED lighting
- Hardwood cabinet finishes
- Polished Corian<sup>®</sup> countertops with tile and mosaic backsplashes
- Residential refrigerator



On the Cover: 40R Light Sandalwood Full-Body Paint

40R Splendor with Coffee-Glazed Honey Cherry Cabinetry

## Luxurious Living Awaits in Your Journey®

If life is a journey, why not travel in style? The Journey is the perfect blend of luxury and comfort with Ultraleather™ furniture, coffee-glazed hardwood cabinetry, a counter-depth French door residential refrigerator, and top-of-the-line entertainment features. The new 40R boasts a full-wall slide, high-polished Corian® countertops, and a cozy

lounge with an electric fireplace. Experience world-class ride and handling with the Winnebago-exclusive Maxum Chassis® and enjoy unbelievable storage—up to 229 cubic feet—thanks to its lowered-rail design. And now, larger Contour™ frameless dual-pane windows create an even more open feeling in your Journey on the road.



**Recognized Quality** The Recreation Vehicle Dealer Association annually rates RV manufacturers and awards the Quality Circle Award to manufacturers that provide exceptional products, service, and support. Winnebago is proud to be the only manufacturer that has received this award every year since its inception.

## Best in Class

See how Winnebago takes motorhome design and function to the next level, and why we've earned the right to be called the Most Recognized Name in Motorhomes.®



Click on this icon throughout the brochure to link to more information on the web.



Choose a set of two plush **Ottomans** for extra storage and seating or to rest your legs while relaxing on your sofa (NA 36M).



Day or night, the smooth-retracting **MCD Solar/Blackout Roller Shades** give you total control over light and privacy levels.



**Full-Extension Drawer Slides** make it easy to open drawers wide and maximize their storage space.



Important gauges, switches, and controls are all centrally located in the **OnePlace® Systems Center**.



The **Rest Easy® Extendable Sectional Sofa** glides from a sofa to a lounge to a bed at the touch of a button (40R, 42E).



40R Rest Easy Extendable Sectional Sofa

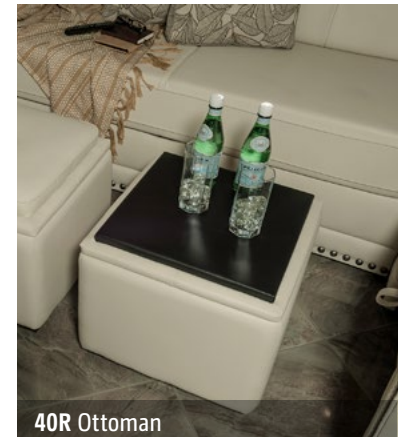
Premium amenities and contemporary décor come together seamlessly in the Journey lounge. A generous living area with new, larger Contour™ dual-pane windows welcomes you with its spacious, inviting, and open feel. With upscale features such as Ultraleather furniture, MCD solar/blackout roller shades, an electric fireplace (standard 40R, 42E and available in the 36M), and a state-of-the-art Blu-Ray™ home theater soundbar system, you can relax with complete control over your surroundings. From the tray ceiling with crown molding and LED ceiling lights to the reliable TrueAir™ Maximum Comfort air conditioning system, the lounge is undeniably sophisticated and equally comfortable.



40R Electric Fireplace



40R Mid-Coach HDTV with Storage



40R Ottoman



40R Galley

From quiet dinners to entertaining get-togethers, the Journey's galley is fully-equipped for any event. Quality features include a microwave/convection oven and a residential stainless steel French door refrigerator/freezer with an ice and water dispenser. This complete galley also has ample work space for easy meal prep. Customize your motorhome with your preferred choice of distinguished coffee-glazed cabinet finishes. With natural flow and plentiful space, your polished galley will serve as the heart of your Journey.



Corian Sink Cover



Microwave/Convection Oven



Residential French Door Refrigerator/Freezer



3-Burner Range Top with Pot Filler Faucet (40R)



40R Range with Covers



40R Pantry



40R Glide & Dine Dining Table with Chairs

The Glide & Dine dining table with buffet (36M, 40R) and the distinguished, extendable dining table with buffet (42E) set the stage for many enjoyable evenings. Each tabletop easily expands to allow for additional guest seating.



Glide & Dine Dining Table



Glide & Dine Dining Table



40R Powered Bed Up

A good night's sleep is simply an adjustment away with the Ideal Rest® Natural Reserve digital comfort control mattress (40R, 42E and available in the 36M). The natural cotton and bamboo fibers and duo-firmness memory-cell insert offer adjustable comfort in addition to the mattress' customizable support settings. The powered bed adjusts to your preferred position and the 36M slides side-to-side, so you can enjoy maximum comfort whether you're reading a book or watching the HDTV. Each floorplan offers abundant bedroom storage, and now the 36M features an available electric fireplace as well.

The 36M features a mid-coach bath with a Corian countertop and backsplash, flexible showerhead, textured glass shower door, skylight, and porcelain toilet. The 40R and 42E feature a mid-coach half bath and a private master bath.



40R Wardrobe

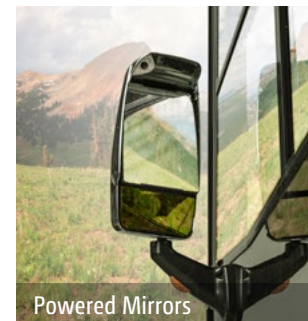


40R Guest Bath



Dash

With its signature smooth ride and nimble handling, the cab delivers the upscale comforts one expects from a luxury diesel-pusher with the unmatched performance of a Maxum Chassis. The Ultraleather cab seats make even the most ambitious rides comfortable. Have a relaxing ride and let the Infotainment Center with a Rand McNally RV GPS and 10.4" screen guide your way while you enjoy other great features such as sideview cameras, a color rearview camera, compass, iPod®/iPhone® audio integration, Bluetooth™, and much more.



Powered Mirrors



Cab Seats Reclined







40R Powered Patio Awning with Motion Sensor and LED Lighting

Enjoy the outdoors and all that you want to bring with plenty of exterior storage space in the sliding storage trays that allow for easy access from either side of the coach. From the color-coded service center and the KeyOne® lock system to the automatic entrance steps, the Journey is designed with simplicity and comfort in mind. For those warm summer evenings, relax with the available exterior entertainment center and its HDTV under the standard powered patio awning with a motion sensor and LED lighting.



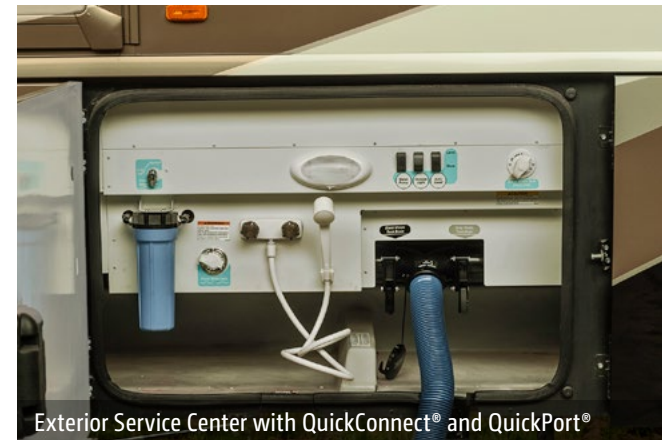
Exterior Slideout Storage Tray



Powered Entrance Awning



Available Exterior Entertainment Center with HDTV



Exterior Service Center with QuickConnect® and QuickPort®



Stylized Aluminum Wheels



**Fiberglass Roof** The crowned, one-piece fiberglass roof is backed by a 10-year limited parts-and-labor roof skin warranty.

**Thermo-Panel® Sidewalls** By layering fiberglass and high-density block foam insulation with welded aluminum support structures, we create some of the industry's strongest, most durable and lightweight sidewalls.

**E-Coating** An electrodeposition coating helps protect critical steel components.

**Embedded Steel** Metal substructures embedded into the sidewall provide solid attachment points to keep cabinets and appliances mounted securely in place.

**Solid Framework** Aluminum extruded in our own facility to our exacting standards creates an extremely strong and solid structural framework.

**Laser-Cut Tubing** Precision laser cutters create precise joints in structural steel that are stronger and require less welding.



**Interlocking Joints** Specially engineered interlocking joints connect the floor, sidewalls and roof where competitors often rely on simple screws to bear the weight.

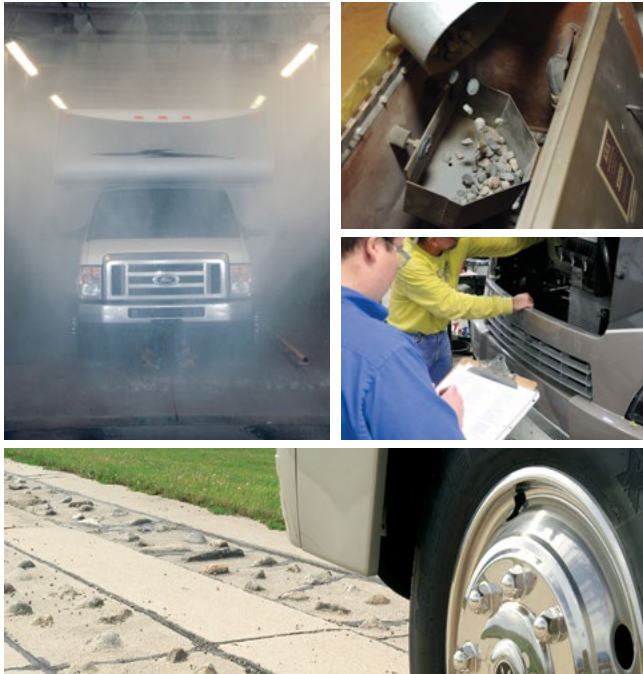


# SUPER STRUCTURE

BUILT TO LAST

Every coach—from our smallest Class C to our largest diesel-pusher model—is built to Winnebago's® legendary SuperStructure® construction standards. It's a process developed and refined over more than 50 years of building some of the strongest, most durable coaches in the industry.

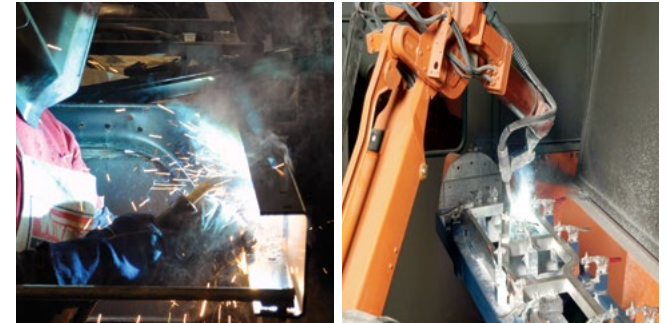
**TESTING** Before rolling out of our factories, every coach undergoes an extensive 113-point inspection. Each coach also passes a high-pressure water test that simulates rain at a rate of 50-inches per hour to check for leaks. During the design process, our computer simulations, physical testing center, and rigorous test track ensure each model is built to last.



**DETAILS** At Winnebago, we treat the features you can't see with the same care as the ones you can. Look in the access panels of some of our competitors' coaches and you'll see loose insulation and wires haphazardly strewn about. Winnebago maintains a clean fit and finish throughout so your coach will last for the long haul.



**BUILT IN-HOUSE** We extrude our own aluminum. We rotocast our own plastic components. In fact, we manufacture most of our own parts so they are designed to fit the space, rather than fitting the space to an awkward off-the-shelf component size.



**SUPER STRUCTURE**  
BUILT TO LAST

Visit [BetterBuiltRVs.com](http://BetterBuiltRVs.com) to gain real insight into what goes into a Winnebago motorhome.

**TAKE A TOUR** We're proud of our processes, state-of-the-art facilities, and the people who make Winnebago number one. We invite you to visit our complex in Forest City, Iowa, for a firsthand look at the dedication and technology behind every motorhome we build.



## MAXUM CHASSIS

3-point engine mounting reduces engine vibration.

Engine brake uses the engine to slow the coach, promoting longer brake life.

Allison® 3000 MH 6-speed automatic transmission includes a touchpad control for ease of use.

Rear axle incorporates proprietary gear machining for a smoother, quieter ride.

NeWay® rear air suspension provides superior ride and handling.

The lowered-rail design moves intrusive rails from storage areas, creating up to 229 cubic feet of storage.

Taller, 23.25" pass-through storage height accommodates bulky items compared to 19.5" similar raised-rail and 17" on a typical raised-rail.

Extra space in critical areas allows for more pass-through storage.

55° wheel cut provides a tighter turning radius and better maneuvering.

Color-coded air lines make service easy.

10,000-pound trailer hitch® (36M)

15,000-pound trailer hitch® (40R, 42E)

"Clean Air Diesel" Cummins® engine delivers hill-climbing power when you need it most:

- Cummins ISB XT 6.7L 360-hp (36M)
- Cummins ISL 8.9L 380-hp (40R)
- Cummins ISL 8.9L 450-hp (42E)

Low frame rails create a lower center of gravity improving stability.

Winnebago's SuperStructure integrated with the lowered-rail design creates a chassis that is seven times stronger than typical raised-rail chassis designs.

Dual-fill fuel tank.

## A True Work of Art

You may not be able to see the Maxum Chassis® as you're driving through the Rockies or cruising the coast, but you'll know it's there. Its powerful Cummins® turbo-charged diesel engine and Allison® transmission go to work so you don't have to sweat the peaks and valleys ahead.

Through a strong partnership with Freightliner, the undisputed leader in diesel motorhome

chassis, we set a new standard for handling, ride and performance in diesel chassis design.

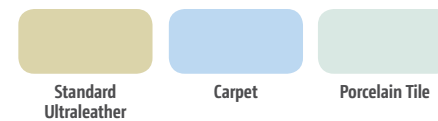
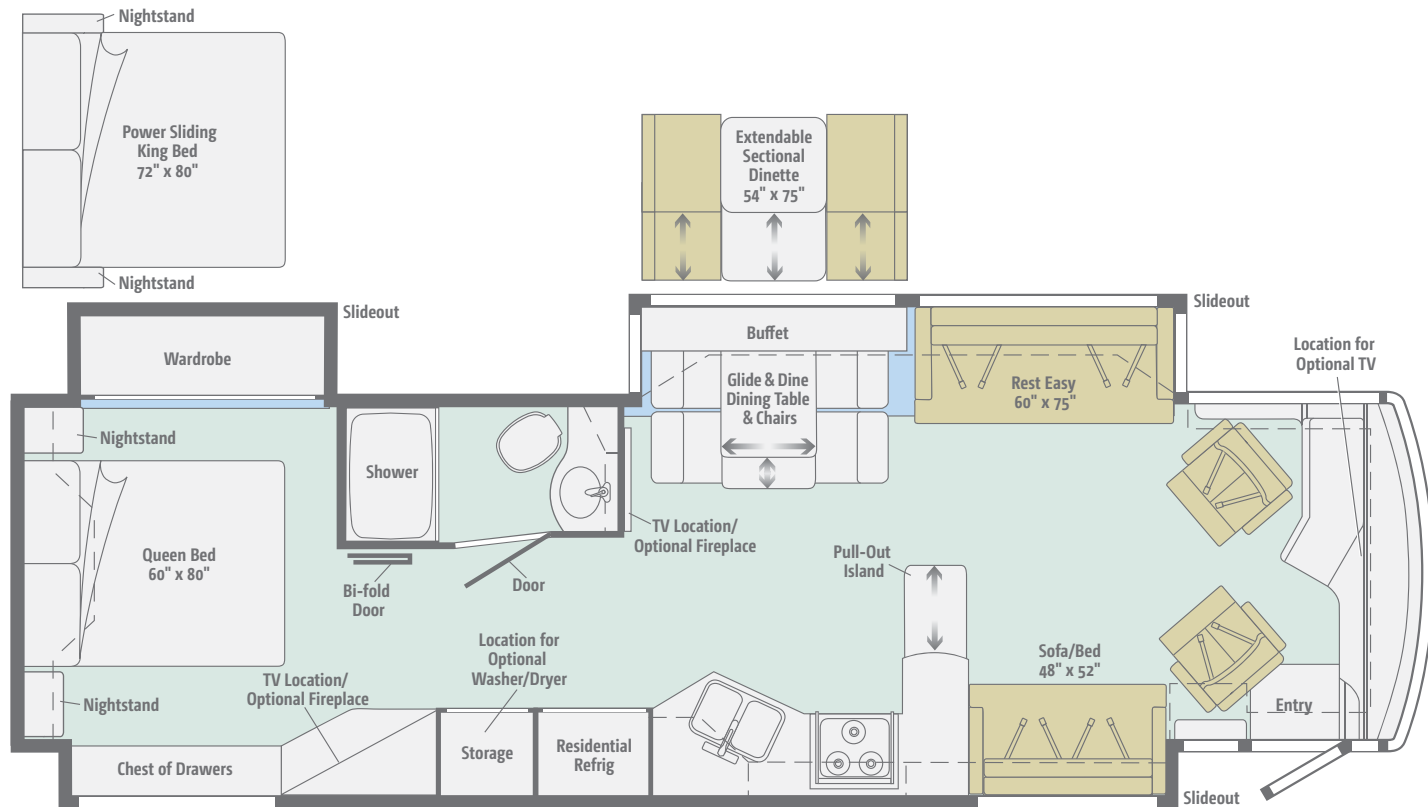
But performance doesn't mean sacrificing storage. The innovative lowered-rail design of the Maxum Chassis opens up a cavernous basement storage compartment, offering up to 229 cubic feet of storage.

4-wheel ABS anti-lock air brakes provide fast stopping power.

Michelin® tires and polished aluminum wheels look sharp.

## 36M

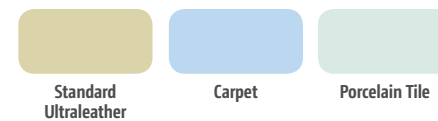
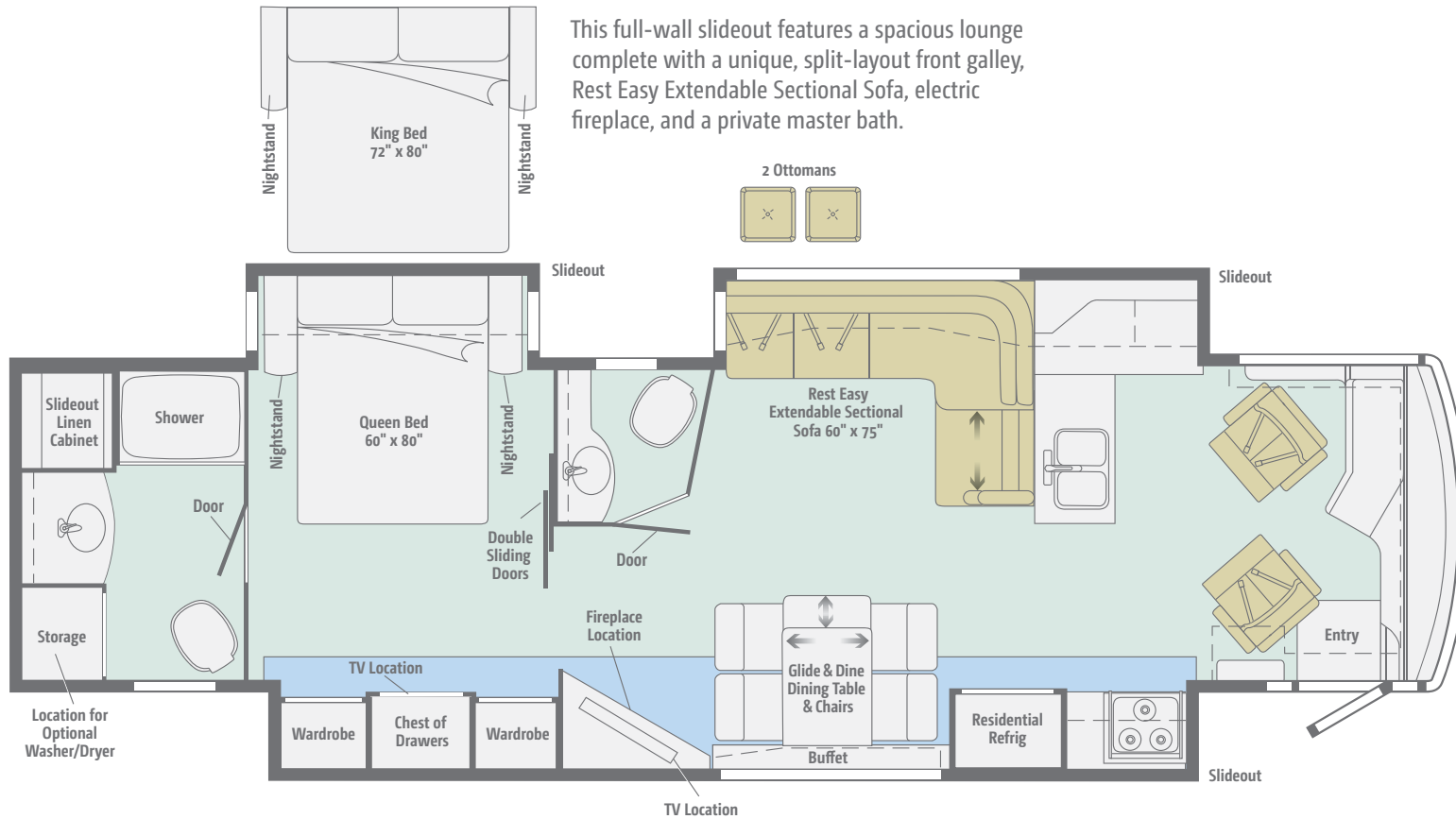
This elegant full-wall slideout boasts room for everyone with opposing Ultraleather™ sofas, a pull-out island, and a Glide & Dine dining table with buffet.



Dimensions shown are for sleeping space only and may vary due to styling differences. Dashed lines denote overhead storage areas. Floorplans and specifications are also available online at [WinnebagoInd.com](http://WinnebagoInd.com).

## NEW 40R

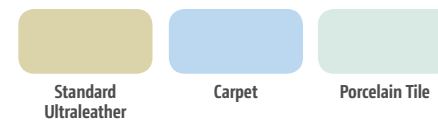
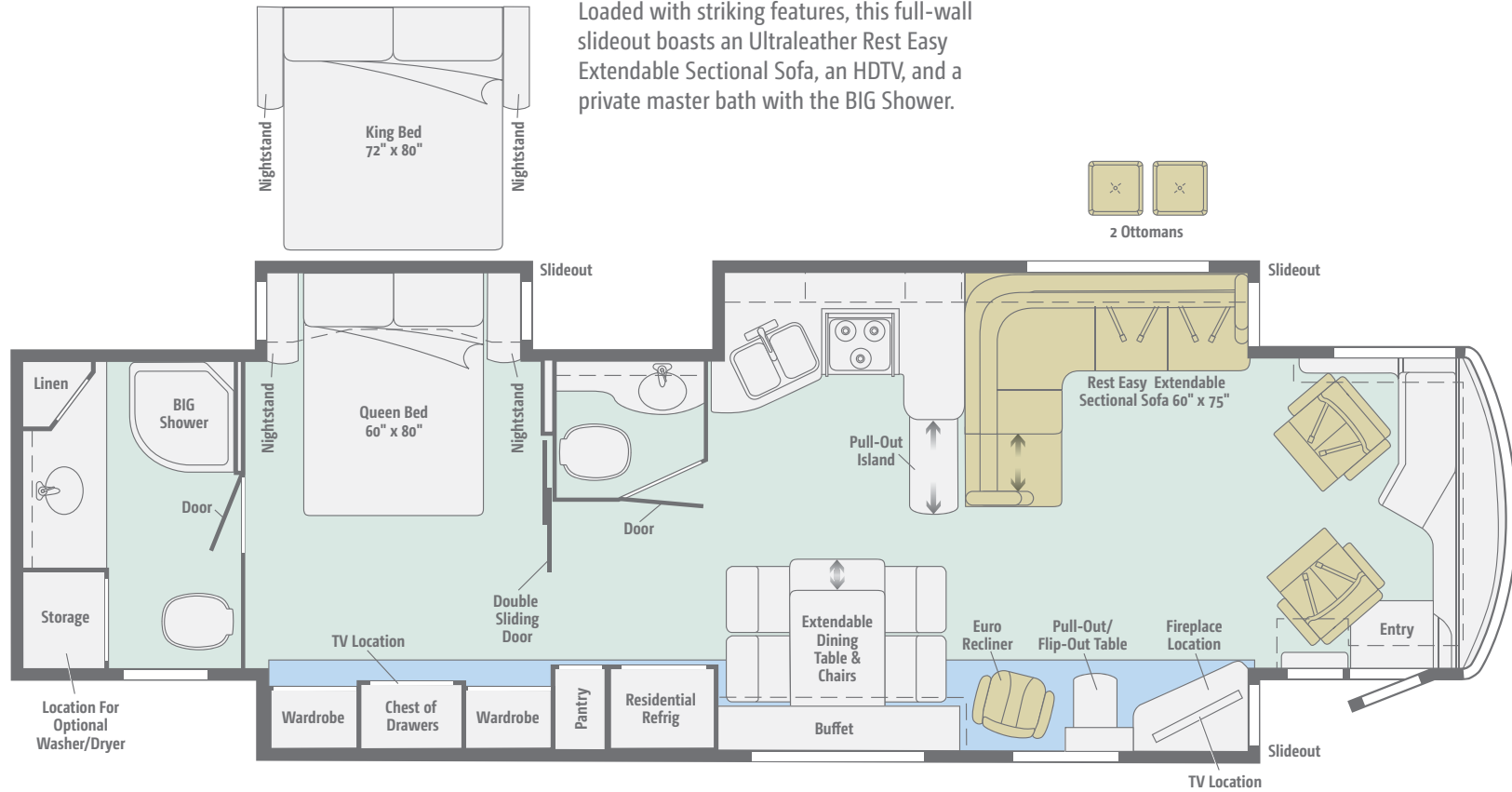
This full-wall slideout features a spacious lounge complete with a unique, split-layout front galley, Rest Easy Extendable Sectional Sofa, electric fireplace, and a private master bath.



Dimensions shown are for sleeping space only and may vary due to styling differences. Dashed lines denote overhead storage areas. Floorplans and specifications are also available online at [WinnebagoInd.com](http://WinnebagoInd.com).

## 42E

Loaded with striking features, this full-wall slideout boasts an Ultraleather Rest Easy Extendable Sectional Sofa, an HDTV, and a private master bath with the BIG Shower.



Dimensions shown are for sleeping space only and may vary due to styling differences. Dashed lines denote overhead storage areas. Floorplans and specifications are also available online at [WinnebagoInd.com](http://WinnebagoInd.com).

Choose from three fabric collections and four wood finishes.

## Splendor



Main



Ultraleather



Accent



Bedspread



Corian Countertop



Wall Board



Porcelain Tile



Coffee-Glazed  
Honey Cherry



Coffee-Glazed  
Forest Cherry\*



Coffee-Glazed  
Vienna Maple



Glazed Java

*Winnebago reserves the right to change décor materials and specifications without notice or obligation.*

*\*Not available after 3/1/15*



Choose from three fabric collections and four wood finishes.

## Silver Birch



Main



Ultraleather



Accent



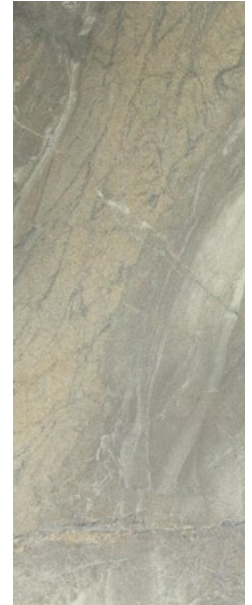
Bedspread



Corian Countertop



Wall Board



Porcelain Tile



Coffee-Glazed  
Honey Cherry



Coffee-Glazed  
Forest Cherry\*



Coffee-Glazed  
Vienna Maple



Glazed Java

*Winnebago reserves the right to change décor materials and specifications without notice or obligation.*

*\*Not available after 3/1/15*

Choose from three fabric collections and four wood finishes.

## Spectrum



Main



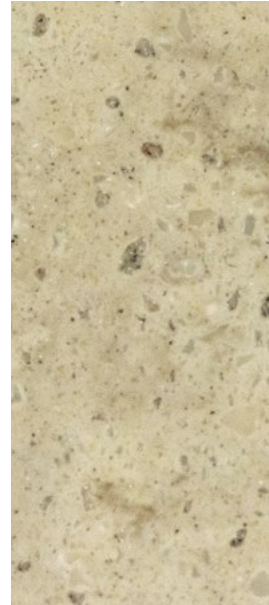
Ultraleather



Accent



Bedspread



Corian Countertop



Wall Board



Porcelain Tile



Coffee-Glazed  
Honey Cherry



Coffee-Glazed  
Forest Cherry\*



Coffee-Glazed  
Vienna Maple



Glazed Java

*Winnebago reserves the right to change décor materials and specifications without notice or obligation.*

*\*Not available after 3/1/15*

Striking full-body paint with a premier automotive clearcoat finish brings more depth and shine to your Journey.



**Light Sandalwood**  
FULL-BODY PAINT



**Graystone**  
FULL-BODY PAINT

# Journey Paint

**WINNEBAGO**<sup>IND</sup>

Striking full-body paint with a premier automotive clearcoat finish brings more depth and shine to your Journey.



**Ebony**  
FULL-BODY PAINT



**Bisque**  
FULL-BODY PAINT

# Journey Paint

**WINNEBAGO**<sup>IND</sup>

Striking full-body paint with a premier automotive clearcoat finish brings more depth and shine to your Journey.



**Dark Sandstone**  
FULL-BODY PAINT



**Vineyard**  
FULL-BODY PAINT

## Weights & Measures

	36M	40R	42E
Length	37'3"	41'3"	43'7"
Exterior Height <sup>1</sup>	12'10"	12'9"	12'9"
Exterior Width <sup>2</sup>	8'5.5"	8'5.5"	8'5.5"
Exterior Storage <sup>3</sup> (cu. ft.)	183	229	229
Awning Length	20'	20'	20'
Interior Height	7'	7'	7'
Interior Width	8'0.5"	8'0.5"	8'0.5"
Freshwater Tank Capacity <sup>4</sup> (gal.)	85	85	85
Water Heater Capacity (gal.)	10	10	10
Optional Water Heater Capacity	Continuous	Continuous	Continuous
Holding Tank Capacity - Black/Gray <sup>4</sup> (gal.)	46/61	57/89	71/109
LP Capacity <sup>5</sup> (gal.)	28	28	28
Fuel Capacity (gal.)	100	100	100
GCWR <sup>6</sup> (lbs.)	42,350	52,300/53,320	59,320
GVWR (lbs.)	32,350	37,320/38,320	44,320
GAWR - Front (lbs.)	12,350	14,320	14,320
GAWR - Rear (lbs.)	20,000	23,000/24,000	30,000
Wheelbase	228"	276"	279" + tag

## Maxum Chassis®

360-hp Cummins ISB XT 6.7L turbo-charged diesel engine (36M)  
 380-hp Cummins ISL 8.9L turbo-charged diesel engine (40R)  
 450-hp Cummins ISL 8.9L turbo-charged diesel engine (42E)  
 Allison® 6-speed automatic 3000 MH transmission  
 Information display center  
 NeWay® front and rear air suspension  
 160-amp. alternator  
 Air brakes w/ABS

Engine exhaust brake  
 Quick-connect air connection w/manual shut off  
 Automatic hydraulic leveling jacks  
 7-pin trailer wiring  
 Trailer Hitch<sup>6</sup> 10,000-lb. drawbar/500-lb. maximum vertical tongue weight (36M)  
 Trailer Hitch<sup>6</sup> 15,000-lb. drawbar/1,500-lb. maximum vertical tongue weight (40R, 42E)  
 Stylized aluminum wheels

## Cab Conveniences

**Infotainment Center with Rand McNally RV GPS**  
 10.4" touch screen color monitor w/split screen function, 2nd monitor, Rand McNally RV GPS safe & easy routing, amenities & tools, trips & content, turn-by-turn voice guidance, AM/FM radio w/CD/DVD player, steering wheel and handheld remote, SiriusXM™ (subscription not included), compass, outside temperature, iPod®/iPhone® audio integration, Bluetooth™, color rearview camera, sideview cameras

**Cab seats** multi-position armrests, adjustable lumbar support, and multi-adjustable slide/recline/swivel

**3-point seat belts**

**6-way power driver seat**

**6-way power passenger seat** w/manual footrest

**Cruise control**

**12-volt powerpoints**

**Powered stepwell cover**

**Powered MCD solar/blackout roller shades** (front windshield)

**Defroster fans**

**MCD solar/blackout roller shades** (driver and passenger windows)

**Chassis/house battery radio power switch**

**Power mirrors w/defrost, turn signal indicator, and sideview camera**

**TRW® tilt/telescopic steering column w/foot actuated pedal**

**Map lights**

**Keyless entry w/remotes**

### OPTIONAL EQUIPMENT

+Lounger passenger cab seat w/flip-up workstation

## Interior

**40" HDTV** (mid-coach 36M)

**50" HDTV** (mid-coach 42E)

**55" HDTV** (mid-coach 40R)

**Satellite system ready**

**Digital TV amplified antenna system**

**HDMI Matrix central Audio/Video Selection System**

**MCD solar/blackout roller shades**

**Soft vinyl ceiling**

**Accent rope lighting**

**OnePlace® systems center**

**Contour™ windows** dual-pane, tinted, frameless

**Powered ventilator fan** (galley)

**LED ceiling lights**

**Powered roof vent(s)** (bath(s))

**Washer/dryer prep**

**DVD player w/remote**

**Home theater soundbar system**

**Electric fireplace** (40R, 42E)

### OPTIONAL EQUIPMENT

Stackable washer and dryer

Electric fireplace (36M)

Winegard® Mission® in-motion satellite TV antenna

Winegard Trav'ler® automatic HDTV antenna

40" HDTV (front overhead) (36M)

42" HDTV (mid-coach) (36M)

## Galley

Corian® countertops and decorative backsplash

Residential stainless steel French door refrigerator w/interior water dispenser, automatic icemaker, and bottom freezer drawer

Microwave/convection oven w/vented range fan (touch control)

3-burner range top w/storage below

Corian range and sink covers

Pot filler faucet (40R)

Cold water filtration system

### OPTIONAL EQUIPMENT

3-burner range w/oven

## Bath

Corian countertop w/decorative backsplash  
Flexible showerhead  
Textured glass shower door  
Skylight  
Porcelain toilet  
Area rug (40R, 42E)

## Bedroom

32" HDTV  
Queen bed w/innerspring mattress and storage below (36M)  
Powered queen bed w/Ideal Rest® Natural Reserve digital comfort control mattress w/remotes (40R, 42E)  
Bedsread, pillows, and pillow shams  
Headboard  
Ceiling fan

### OPTIONAL EQUIPMENT

Powered, sliding king bed w/Ideal Rest Natural Reserve digital comfort control mattress w/remotes (36M)  
Queen bed w/Ideal Rest Natural Reserve digital comfort control mattress w/remotes (36M)  
Powered king bed w/Ideal Rest Natural Reserve digital comfort control mattress w/remotes (40R, 42E)  
Fireplace (36M)

## Exterior

Powered patio awning w/motion sensor and LED lighting  
KeyOne® lock system  
Porch light  
Powered entrance awning w/LED lighting  
Lighted storage compartments  
Driver's side docking/service light

Lighted stepwell  
Slideout storage compartment tray  
Storage containers w/lids (4)  
Automatic entrance steps  
Auxiliary side lamps  
Full-width mudguard  
Lower front protective mask  
Premier clearcoat automotive finish  
Rear mud flaps

### OPTIONAL EQUIPMENT

Entertainment Center w/32" HDTV  
Portable refrigerator/freezer on roll-out tray  
Ladder

## Heating & Cooling System

TrueAir® Maximum Comfort air conditioner, 13,500 BTU (2 cooling units 36M; 3 cooling units 40R, 42E)  
Air conditioner heat pumps  
2-20,000 BTU ducted furnaces (36M)  
1-20,000 BTU ducted furnace and 1-25,000 BTU ducted furnace (40R, 42E)  
Multi-zone thermostat

## Electrical System

Service Center lighted, cable input, 50-amp. power cord, QuickPort® shoreline/generator automatic changeover switch, portable satellite hookup  
2,800-watt inverter/charger w/remote panel w/battery disconnect  
8,000-watt Cummins Onan® Quiet Diesel™ generator  
Cummins Onan Energy Command™ automatic generator start system  
Auxiliary start circuit

AC/DC electrical distribution system  
6 deep-cycle Group 31 marine/RV AGM batteries  
Battery disconnect system (coach and chassis)  
PowerLine® Energy Management System  
Automatic dual-battery charge control  
Chassis battery charger/maintainer  
Exterior TV jack and AC duplex

### OPTIONAL EQUIPMENT

100-watt solar panel battery charger

## Plumbing System

Service Center pressurized city water hookup w/diverter fill, freshwater drain, drainage valves, exterior wash station w/pump switch, holding tank flushing system, 20' sewer hose w/QuickConnect® QuickPort  
On-demand water pump  
10-gallon water heater 110-volt/LP gas w/motoraid  
TrueLevel™ holding tank monitoring system  
Winterization Package water heater bypass valve, siphon tube, and diverter valve  
Full-coach water filtration system  
Permanent-mount LP tank w/gauge  
LPG accessory connection (patio area)  
Heated holding tank compartment

### OPTIONAL EQUIPMENT

Tankless water heater

## Safety

LP, smoke, and carbon monoxide detectors  
10 BC fire extinguisher  
Ground fault interrupter  
Fog lamps  
High-mount brake lamps  
Daytime running lamps

## Warranty<sup>7</sup>

12-month/15,000-mile basic limited warranty<sup>8</sup>

36-month/36,000-mile limited warranty on structure<sup>8</sup>

10-year limited parts-and-labor warranty on roof skin<sup>8</sup>

### FOOTNOTES

- 1 The height of each model is measured to the top of the tallest standard feature and is based on the curb weight of a typically equipped unit. The actual height of your vehicle may vary by several inches depending on chassis or equipment variations. Please contact your dealer for further information.
- 2 Floorplans feature a wide-body design - over 96." In making your purchase decision, you should be aware that some states restrict access on some or all state roads to 96" in body width. Before making your purchase decision, you should confirm the road usage laws in the states of interest to you.
- 3 The load capacity of your motorhome is designated by weight, not by volume, so you cannot necessarily use all available space when loading your motorhome.
- 4 Capacities are based on measurements prior to tank installation. Slight capacity variations can result due to installation applications.
- 5 Capacities shown are tank manufacturer's listed water capacity (W.C.). Actual filled LP capacity is 80% of listing due to overfilling prevention device on tank.
- 6 Actual towing capacity is dependent on your particular loading and towing circumstances which includes the GVWR, GAWR, and GCWR, as well as adequate trailer brakes. Please refer to the Operator's Manual of your vehicle for further towing information.
- 7 See separate chassis warranty.
- 8 See your dealer for complete warranty information.

Winnebago's® continuing program of product improvement makes specifications, equipment, model availability, and prices subject to change without notice. Published content reflects the most current product information at time of printing. Please consult your dealer for individual vehicle features and specifications.



Let us host your next

# Adventure

Over 20 Tours in 2015



WGOAdventures.com



Show your Winnebago love with high-quality gifts and wearables.



Apparel | Gifts | Parts | Gear

WinnebagoOutdoor.com

Find your style



Connect with Winnebago (Click one of the following)



Like us



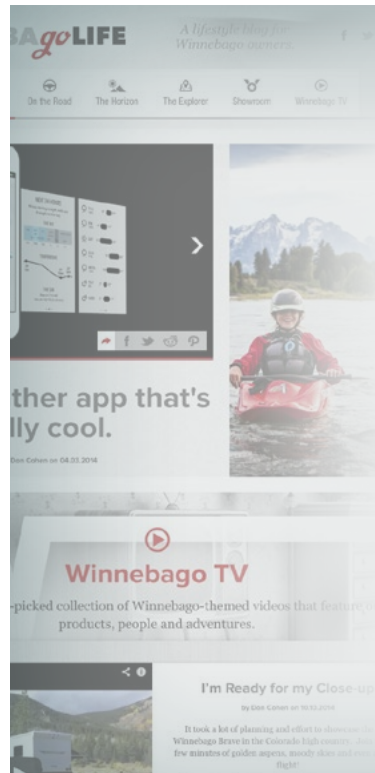
Follow us



Watch now

## WinnebagoInd.com Has All The Answers

Visit WinnebagoInd.com on your computer, smartphone, or tablet for the latest product information and updates.



## Welcome to GoLife!

Visit our lifestyle blog for motorhome news, personal travelogues, and community stories.

WinnebagoLife.com





mywinnebago.com

LOOKING BACK  
TELL YOUR STORY  
JOIN THE CREW

WINNEBAGO HAS A STORY  
AND WHAT A STORY IT IS!

## Looking Back



**Take a Drive Down Memory Lane**  
Our historic history began in the American heartland of Forest City, Iowa over 100 years ago. From high quality, safe, working recreation vehicles, here our story between the pages.

1 of 11

## Tell us your story

The story of Winnebago is about the people who love our products and take their wild adventures on the road. Now we want to hear from another - your story. Please, do tell. We promise we'll tell everyone! All story submissions will receive a Crew spirit shirt. Added bonus: If your story is posted to the website, we'll send you a vintage-style Crew T-shirt. Read more about The Crew below.

write your STORY READ ALL A TORICA




## Join the Crew

Show Your Pride

We're looking for a few good men and women who love their Winnebago and want to wear it every day to join The Crew! If you love Winnebago products and are interested to show your pride, submit your name and photos to become part of The Crew.

## See How Far We've Come

MOVE THE SLIDER TO SEE THE EVOLUTION



## Then & Now

The Snow is Back

In the old days, the snow was no laughing matter. It was a real problem. With all the things we and our "winnebago" have done, we've come a long way. It's time to get in line again with the new Snow and Snow.

SEE Tribute SEE Brave

Ads from the Archives

SEE THE AD TO SEE THE ORIGINAL DESIGN

# VISIT:

MyWinnebagoStory.com

# PREFERRED CARE PROGRAM

We back our motorhomes with best-in-class support both before and after the sale:



- 12-month/15,000-mile basic limited warranty
- 36-month/36,000-mile limited warranty on structure
- 10-year limited parts-and-labor warranty on roof skin
- Complimentary 24-hour roadside assistance program



**TRIPSAVER**  
FAST TRACK PARTS  
**WINNEBAGO**

- TripSaver® Fast Track Parts guarantees that in-stock warranty parts ship directly to your dealer within 24 hours
- National dealer service network

For more information, visit us at [WGOService.com](http://WGOService.com)

From RV to personal insurance, Winnebago RV Insurance can provide all the coverage and services you need to feel at home on the road.

Call us at: (800) 642-4892



# WIT CLUB

## Join the Club, Join the Fun

Here's the perfect way to begin your life on the road as the owner of a new Winnebago – by joining the exclusive WIT Club. Start your adventure with other fun-loving WIT Club members from across the country and get the most out of your new Winnebago motorhome.

Members enjoy:

- Caravans and rallies
- Newsletters
- Local and state group activities
- RV travel benefits



See more at [WITclub.com](http://WITclub.com)

©2015 Winnebago  
Seat belts are your most important hookup. Always buckle up.




## Grand National Rally

G'day mates! Explore the outback at this year's "Down Under" Grand National Rally. Each year, thousands of Winnebago owners descend upon the land down under – a.k.a. Forest City, Iowa.

Rally-goers enjoy an unforgettable week reconnecting with friends, taking tours, participating in activities, and more. Hop on down and join the adventure this July!