

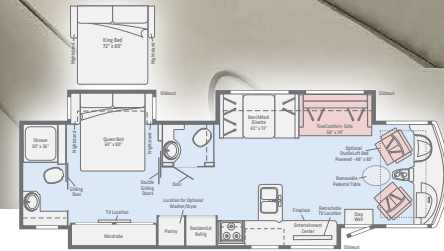


**ADVENTURER**

**WINNEBAGO**



On the Cover: 36Z Dark Cayenne Full-Body Paint  
Interior: 36Z Inspire with Coffee-Glazed Vienna Maple Cabinetry



## Class A Gas Doesn't Get Any Better Than This

The Winnebago Adventurer® is back, packed with user-friendly features and more value than ever before. The Adventurer's five family-friendly floorplans offer plenty of living space and ample storage, whether you're planning a weekend getaway or the adventure of a lifetime. The gas-powered Adventurer is loaded with features and amenities typically reserved for diesel

pushers including full-body paint with chrome mirrors, Corian® countertops in the galley, Primera®-covered furnishings, Versa driver's seat, MCD solar/blackout roller shades, and much more. If you prefer a gas coach but want diesel-level amenities at a terrific value, the new Adventurer is built for you!

This brochure features the Adventurer 36Z floorplan

Inspire with Coffee-Glazed Vienna Maple Cabinetry



BenchMark Dinette



BenchMark Dinette Storage



MCD Solar/Blackout Shades



The Adventurer's lounge offers plenty of comfortable seating, thanks in part to the swiveling Primera cab seats, while the dinette or dining table and chairs (Glide & Dine, 33C) provide an ideal gathering place for eating, games or hobbies. Efficient LED lighting and the electric fireplace (35F, 36Z) provide the perfect ambiance for taking in a movie on the satellite-ready HDTV, while tinted dual-pane windows keep the elements at bay.

Corian countertops with a decorative backsplash and sink covers welcome you to the Adventurer's upscale galley. Cooking duties are handled by the standard three-burner range top and microwave oven (or available microwave convection oven) or opt for the three-burner range with oven below. The double-bowl stainless sink offers plenty of room for prep and cleanup, while the standard water filtration system provides clean water for cooking and drinking.



Corian Sink Covers



Full-Extension Drawer Slides



Microwave Oven



Available Range with Oven



A walkaround queen bed (available king in 33C and 36Z), plenty of storage, and an optional HDTV make the Adventurer's master bedroom the perfect retreat when the day is done. Dinettes and sofas convert to provide additional sleeping space, while the available powered StudioLoft™ bed further bolsters capacity. Every Adventurer bath features a porcelain toilet, linen or medicine cabinet for storage, a textured glass shower door, towel bars and/or rings, a skylight, and a powered vent fan.





The Adventurer Versa driver's seat with 6-way power assist lets you take command in total comfort. The Primera cab seats include two-position armrests, lumbar support, and multi-adjustable slide/recline functions; they also swivel to serve as lounge seats in camp. A dash workstation with USB and 12-volt power lets the co-pilot work or relax en route. The 10" color touch screen rearview/sideview monitor system keeps you both informed and entertained with its Bluetooth® and SiriusXM® capabilities.



Cab Seats Reclined



Dash Workstation

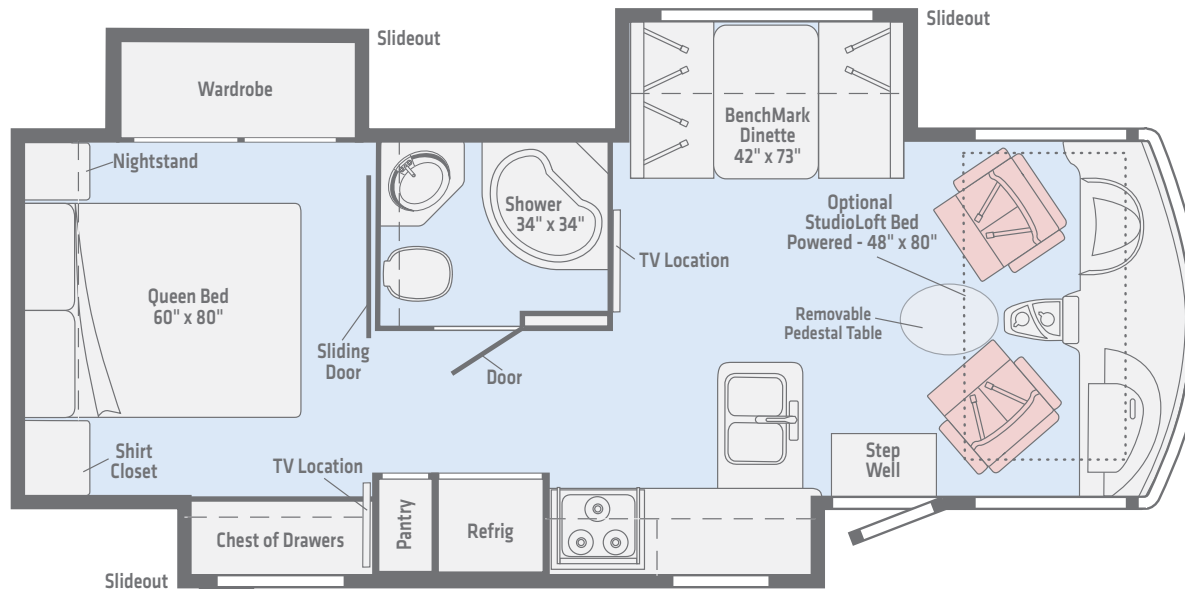
Powered Patio Awning with LED Lighting



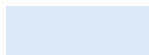
Once you've arrived, unload the toys from the lighted storage compartments, deploy the powered patio awning with LED lighting, and secure Fido to the pet leash tie-down. Fire up the exterior entertainment center, and congratulate yourself on your excellent taste as you bask in the reflected glow of your Adventurer's full-body paint and chrome mirrors.



# 27N



Primera



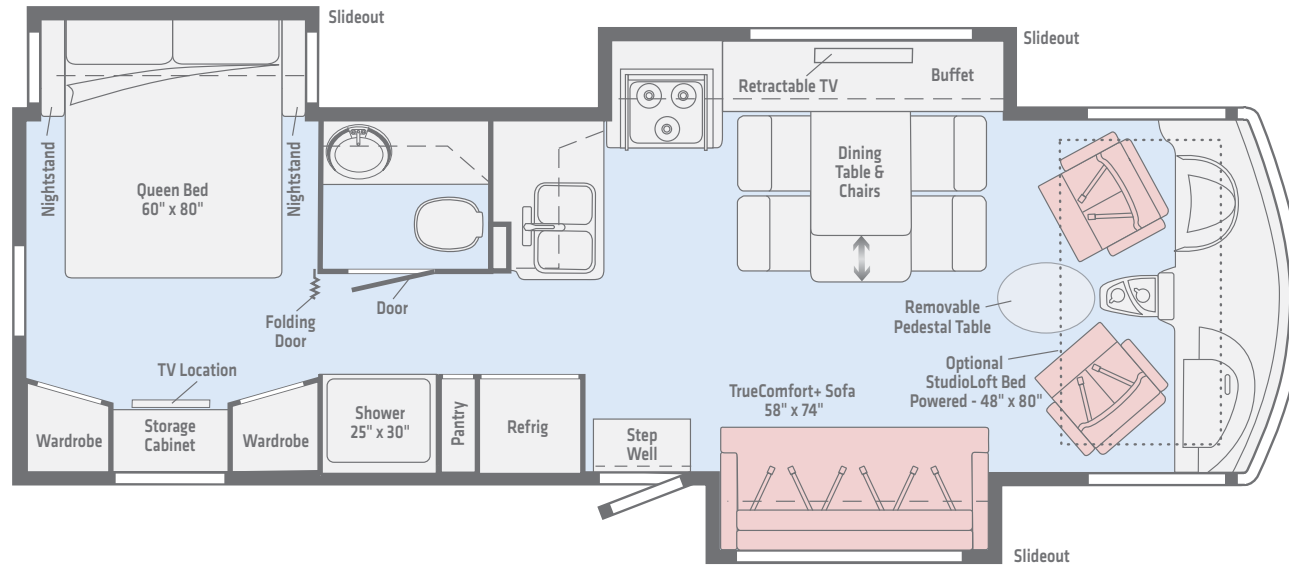
Vinyl

**Length** 28'5"  
**Ext. Height** 12'2"  
**Ext. Storage** (cu. ft.) 123  
**Seating** 5

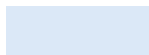
*Dashed lines denote overhead storage areas. Floorplans and specifications are also available online at [WinnebagoInd.com](http://WinnebagoInd.com).*



# 30T



Primera

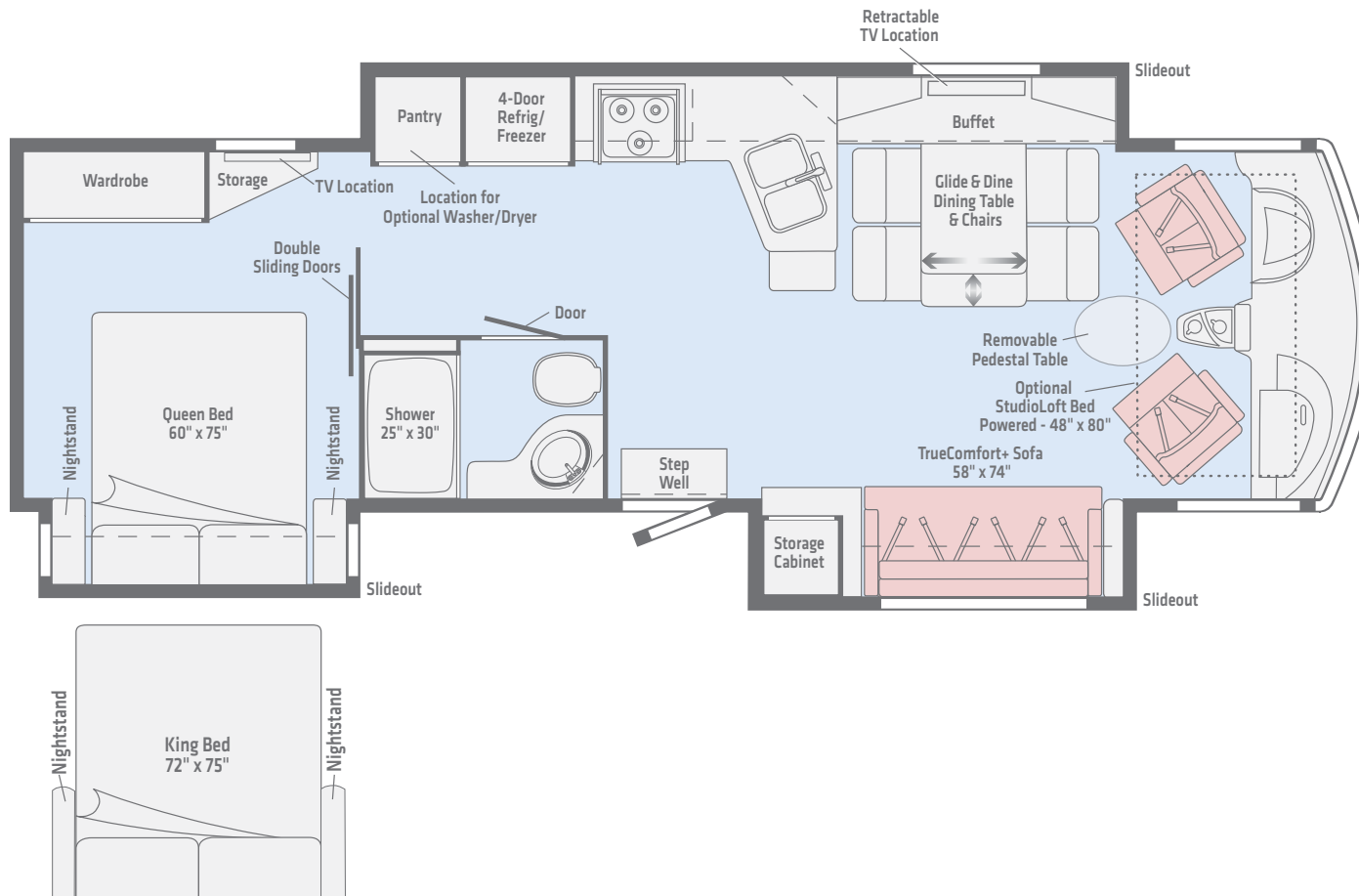


Vinyl

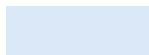
**Length** 31'  
**Ext. Height** 12'1"  
**Ext. Storage** (cu. ft.) 118  
**Seating** 5

*Dashed lines denote overhead storage areas. Floorplans and specifications are also available online at [WinnebagoInd.com](http://WinnebagoInd.com).*

# 33C



Primera

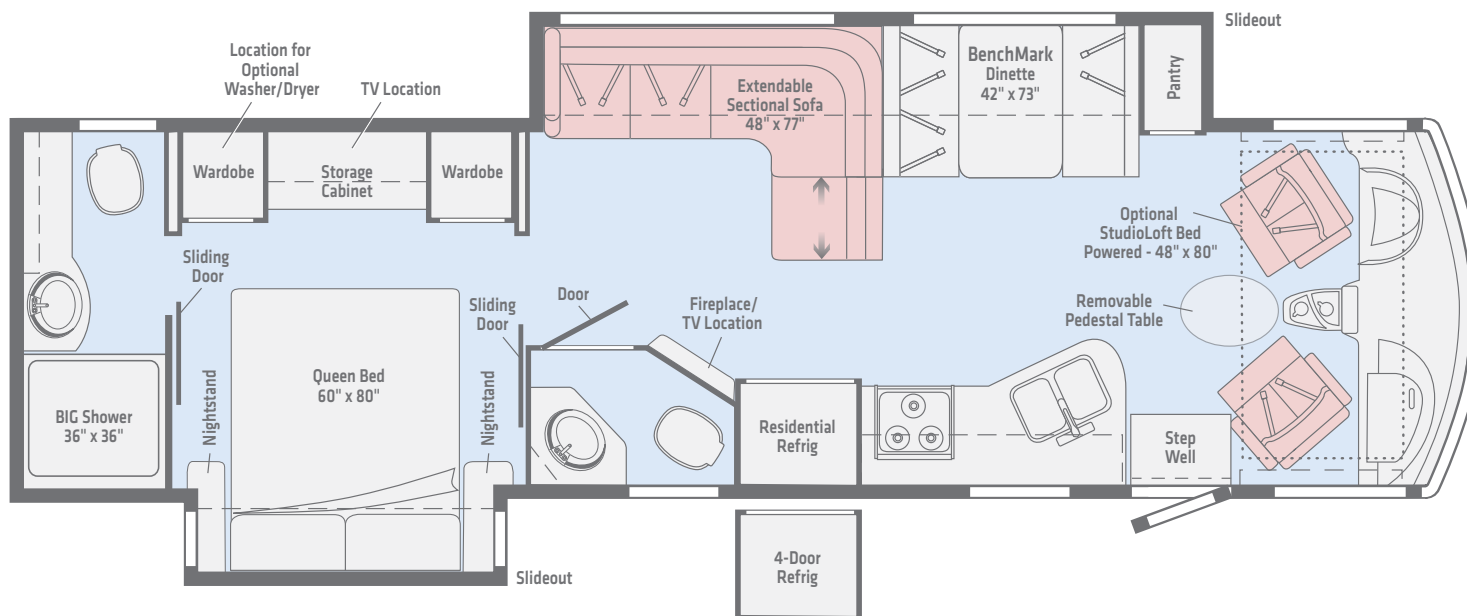


Vinyl

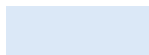
**Length** 34'  
**Ext. Height** 12'5"  
**Ext. Storage** (cu. ft.) 130  
**Seating** 5

*Dashed lines denote overhead storage areas. Floorplans and specifications are also available online at [WinnebagoInd.com](http://WinnebagoInd.com).*

# 35F



Primera

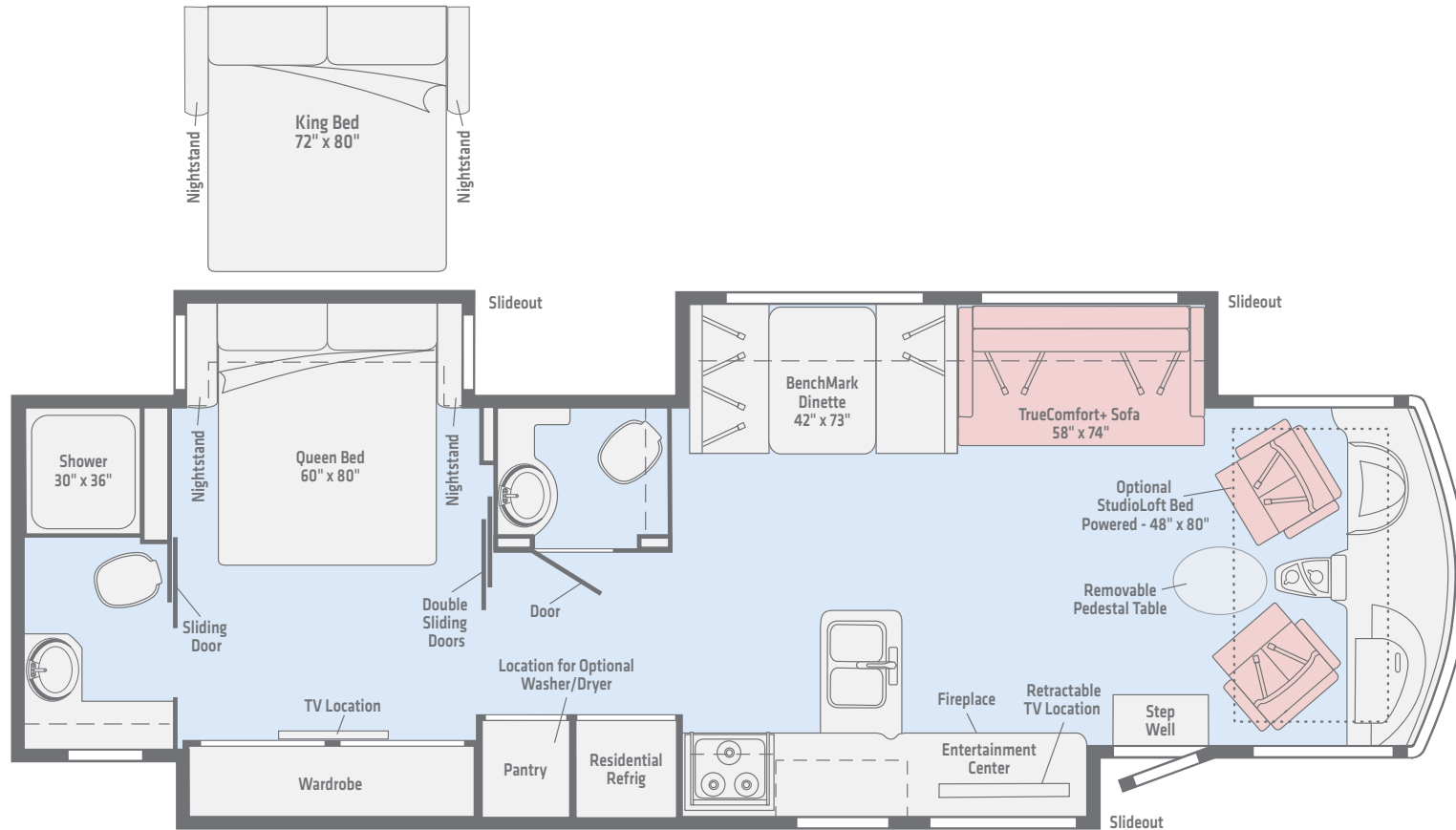


Vinyl

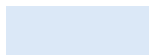
**Length** 35'5"  
**Ext. Height** 12'5"  
**Ext. Storage** (cu. ft.) 137  
**Seating** 7

*Dashed lines denote overhead storage areas. Floorplans and specifications are also available online at [WinnebagoInd.com](http://WinnebagoInd.com).*

# 36Z



Prima



Vinyl

**Length** 36'10"  
**Ext. Height** 12'4"  
**Ext. Storage** (cu. ft.) 122.2  
**Seating** 7

*Dashed lines denote overhead storage areas. Floorplans and specifications are also available online at [WinnebagoInd.com](http://WinnebagoInd.com).*



**Dark Cayenne**  
FULL-BODY PAINT



**Sterling**  
FULL-BODY PAINT

Choose between two collections and two wood options.

## Inspire



Primera



Feature Fabric



Bedspread



Corian Countertop



Vinyl Flooring

## Woods



Coffee-Glazed Vienna Maple



Coffee-Glazed Honey Cherry

Winnebago® reserves the right to change décor materials and specifications without notice or obligation.

Choose between two collections and two wood options.

## Pinnacle



Primera



Feature Fabric



Bedsread



Corian Countertop



Vinyl Flooring

## Woods



Coffee-Glazed Vienna Maple



Coffee-Glazed Honey Cherry

Winnebago® reserves the right to change décor materials and specifications without notice or obligation.

### Kenny and Sabrina Phillips

Several years ago, it seemed like the only time Kenny and Sabrina really had together was on vacation. So Sabrina, a pulmonary/critical care physician who travels to different locations for work, and Kenny, a small business owner, decided to downsize and simplify.

Kenny sold his business and they became full-time RVers in their Winnebago Vista® LX.

As they put it, "We have laughed, loved, and experienced more in the last 12 months living in our Winnebago than we have in the last nine years."

You can learn more about Sabrina and Kenny at [WinnebagoLife.com](http://WinnebagoLife.com). You'll also find hundreds of other great stories from GoLife's outstanding contributors along with how-to articles, gear reviews, RVing tips, and much more.



To learn more about the Phillips' adventures, visit:



[WinnebagoLife.com/about](http://WinnebagoLife.com/about)





Weights & Measures	27N	30T	33C	35F	36Z
Length	28'5"	31'	34'	35'5"	36'10"
Exterior Height <sup>1</sup>	12'2"	12'1"	12'5"	12'5"	12'4"
Exterior Width <sup>2</sup>	8'5.5"	8'5.5"	8'5.5"	8'5.5"	8'5.5"
Exterior Storage <sup>3</sup>	123	118	130	137	122.2
Awning Length	19'	19'	19'	16'	26'
Interior Height	6'8"	6'8"	6'8"	6'8"	6'8"
Interior Width	8'0.5"	8'0.5"	8'0.5"	8'0.5"	8'0.5"
Freshwater Tank Capacity <sup>4</sup> (gal.)	64	78	64	74	93
Water Heater Capacity (gal.)	6	6	10	6	10
Holding Tank Capacity - Black/Gray <sup>4</sup> (gal.)	43/53	41/42	39/60	41/51 & 21/51*	33/41 & 47/44*
LP Capacity <sup>5</sup> (gal.)	18	18	18	18	18
Fuel Capacity (gal.)	80	80	80	80	80
GCWR <sup>6</sup> (lbs.)	23,000	23,000	26,000	26,000	26,000
GVWR (lbs.)	18,000	18,000	22,000	22,000	22,000
GAWR - Front (lbs.)	7,000	7,000	8,000	8,000	8,000
GAWR - Rear (lbs.)	12,000	12,000	15,000	15,000	15,000
Wheelbase	178"	190"	228"	228"	242"
Seating Capacity	5	5	5	7	7

\* The 35F and 36Z use separate black and gray tanks for each bathroom

## Ford® F53 Chassis

**6.8L Triton® V10 SEFI engine, TorqShift™ 6-speed automatic transmission** w/tow/haul, Hydro-Max power brakes, 4-wheel ABS, 175-amp. alternator

**7-pin trailer wiring**

**Trailer Hitch**<sup>6</sup> 5,000-lb. drawbar/500-lb. maximum vertical tongue weight

**Automatic hydraulic leveling jacks** w/3-position controls

**Stainless steel wheel liners** (27N, 30T)

**Stylized aluminum wheels** (33C, 35F, 36Z)

**Rear valve stem extensions** (27N, 30T)

### OPTIONAL EQUIPMENT

Rear valve stem extensions (33C, 35F, 36Z)

## Cab Conveniences

**Versa driver's seat** 6-way power assist, swivel, w/two-position armrests, fixed lumbar support, and multi-adjustable

**Passenger seat** w/two-position armrests, fixed lumbar support, and multi-adjustable slide/recline

**3-point seat belts**

**10" Bluetooth® multimedia radio/rearview/sideview monitory system** w/color touch screen, iPod®/MP3 input, SiriusXM®-ready, AUX, USB

**Chassis/house battery radio power switch**

**Power steering** w/tilt wheel

**Cruise control**

**Power mirrors** w/defrost

**Map lights**

**Powered MCD blackout roller visor/shade** (front windshield)

**MCD blackout roller shade** (driver and passenger windows)

**Dash workstation** w/USB and 12-volt powerpoint

**Convenience tray**

**Instrument panel**

**Removable pedestal table**

### OPTIONAL EQUIPMENT

Passenger seat w/footrest

Radio w/Satellite SiriusXM

Video camera system side-mounted color cameras

Defroster fans

Satellite TV antenna w/receiver

## Interior

**39" HDTV** (30T, 35F)

**50" HDTV** (27N, 33C, 36Z)

**Omni-directional TV antenna**

**Electric fireplace** (35F, 36Z)

**LED ceiling lights**

**Satellite system ready**

**Soft vinyl ceiling**

**MCD solar/blackout shades**

**OnePlace® systems center**

**Tinted, dual-pane windows**

**Washer/dryer prep** (33C, 35F, 36Z)

**TrueComfort+ Sofa**

**Vinyl tile floor throughout**

### OPTIONAL EQUIPMENT

**StudioLoft™** (powered w/ladder and LED lighting)

**Stackable washer/dryer** (33C)

**Washer/dryer combo** (35F, 36Z)

## Galley

**Double stainless steel sink**

**Corian® solid-surface countertop, decorative backsplash, and sink covers**

**Microwave oven** w/range touch control (27N, 33C, 35F, 36Z)

**Microwave/oven touch control** (30T)

**Recessed 3-burner range top** w/storage drawer

**Vented range hood** w/light and fan

**Flip-up countertop extension** (30T, 33C, 35F)

**Double door 7.5 cu. ft. refrigerator/freezer** (27N, 30T)

**4-door 12 cu. ft. refrigerator/freezer** w/icemaker (33C)

**2-door 16 cu. ft. residential refrigerator/freezer** w/icemaker (35F, 36Z)

**Pantry**

**Cold water purification system**

### OPTIONAL EQUIPMENT

**4-door 12 cu. ft. refrigerator/freezer** w/icemaker (35F)

**Microwave/convection oven** w/range touch control (27N, 33C, 35F, 36Z)

**Microwave/convection oven touch control** (30T)

**Range 3-burner** w/oven

## Bath

- Flexible showerhead
- Textured glass shower door
- Skylight
- Porcelain toilet w/foot pedal and sprayer
- Water pump switch(es)
- Medicine cabinet (33C, 35F)
- Linen cabinet (27N, 33C, 36Z)
- Decorative backsplash
- Robe hook(s) (NA 35F)
- Tissue holder
- Towel bar(s) (NA 27N)
- Towel ring(s)
- Powered ventilator fan
- Wall mirror (27N, 35F, 36Z)

## Bedroom

- Queen bed w/innerspring mattress and storage below
- Headboard
- Wardrobe
- Chest of drawers (27N)
- Storage cabinet (30T, 33C, 35F, 36Z)
- 24" HDTV (27N, 30T)
- Bedsread, pillows, and shams
- 32" HDTV (33C, 35F, 36Z)
- Powered ventilator fan (27N, 36Z)
- Room divider

### OPTIONAL EQUIPMENT

- King bed (33C, 36Z)

## Exterior

- Automatic entrance door steps
- Porch light
- Lighted storage compartments
- Premium high-gloss fiberglass skin
- KeyOne™ lock system
- Front mud flaps
- Ladder

- Powered patio awning w/LED lighting
- Powered entrance awning w/LED lighting
- Protective front mask (mandatory option)
- PetPal leash tie down
- Assist handle
- Entertainment Center 32" HDTV, 2 speakers, DVD player, AM/FM radio (NA 30T)
- Entertainment Center AC/DC receptacle, AM/FM radio, 2 speakers, removable TV table, portable satellite dish hookup (30T)

## Heating & Cooling System

- 1 high-efficiency 15,000 BTU air conditioner (27N, 30T)
- 2 high-efficiency 13,500 BTU air conditioner w/Energy Management System (33C, 35F, 36Z)
- 35,000 BTU low-profile ducted furnace (27N, 30T, 33C)
- 40,000 BTU low-profile ducted furnace (35F, 36Z)

### OPTIONAL EQUIPMENT

- Air conditioner heat pump (NA with All-Weather Upgrade Package) (27N, 30T)
- 2 high-efficiency air conditioner heat pumps (33C, 35F, 36Z)
- All-Weather Upgrade Package 2 high-efficiency air conditioner w/heat pumps, 5,500-watt Cummins Onan® Marquis Gold™ gas generator, 50-amp. service (27N, 30T)

## Electrical System

- AC/DC electrical distribution system
- 45-amp. converter/charger
- 30-amp. power cord (27N, 30T)
- 50-amp. power cord (33C, 35F, 36Z)
- 4,000-watt Cummins Onan® MicroQuiet™ gas generator (27N, 30T)
- 5,500-watt Cummins Onan® Marquis Gold™ gas generator (33C, 35F, 36Z)
- Automatic generator start system (35F, 36Z)
- Generator/shoreline automatic changeover switch
- 2 deep-cycle, Group 24 Marine/RV batteries (27N, 30T, 33C)

- 4 deep-cycle, Group 31 Marine/RV batteries (35F, 36Z)
- Battery disconnect systems (coach and chassis)
- PowerLine® Energy Management System
- Automatic dual-battery charge control
- Auxiliary start circuit
- Exterior antenna jack and AC duplex receptacle
- 1,000-watt inverter (27N, 30T, 33C)
- 2,000-watt inverter/charger (35F, 36Z)
- Cable TV input
- Portable satellite dish hookup

## Plumbing System

- Service center color-coded labels, pressurized city water hookup w/diverter valve, drainage valves, 10' sewer hose, QuickPort® service connection hatch, exterior wash station w/lighted pump switch, sewage pump macerator

- Permanent-mount LP tank w/gauge
- On-demand water pump
- TrueLevel™ holding tank monitoring system
- Winterization Package water heater bypass valve and siphon tube
- Heated holding tank compartment
- 6-gallon 110-volt/LP water heater w/motoraid/auto heater (27N, 30T)

- 10-gallon 110-volt/LP water heater w/motoraid/auto heater (33C, 35F, 36Z)
- Gravity water tank fill w/lockable door
- Holding tank flushing system (black tank only)
- LPG accessory connection (patio area)
- Water system filtration package

## Safety

- Child seat tether anchor in forward-facing dinette seat (27N, 35F, 36Z)
- LP, smoke, and carbon monoxide detectors
- 10 BC fire extinguisher
- Ground fault interrupter
- High-mount brake lamp

## Warranty<sup>7</sup>

- 12-month/15,000-mile basic limited warranty<sup>8</sup>
- 36-month/36,000-mile limited warranty on structure<sup>8</sup>
- 10-year limited parts-and-labor warranty on roof skin<sup>8</sup>

### FOOTNOTES

- The height of each model is measured to the top of the tallest standard feature and is based on the curb weight of a typically equipped unit. The actual height of your vehicle may vary by several inches depending on chassis or equipment variations. Please contact your dealer for further information.
- Floorplans feature a wide-body design - over 96". In making your purchase decision, you should be aware that some states restrict access on some or all state roads to 96" in body width. Before making your purchase decision, you should confirm the road usage laws in the states of interest to you.
- The load capacity of your motorhome is designated by weight, not by volume, so you cannot necessarily use all available space when loading your motorhome.
- Capacities are based on measurements prior to tank installation. Slight capacity variations can result due to installation applications.
- Capacities shown are tank manufacturer's listed water capacity (W.C.). Actual filled LP capacity is 80% of listing due to overfilling prevention device on tank.
- Actual towing capacity is dependent on your particular loading and towing circumstances which includes the GVWR, GAWR, and CCWR, as well as adequate trailer brakes. Please refer to the Operator's Manual of your vehicle for further towing information.
- See separate chassis warranty.
- See your dealer for complete warranty information.

NA Not Available

Not all items available in combination. See dealer for details.

Winnebago's® continuing program of product improvement makes specifications, equipment, model availability, and prices subject to change without notice. Published content reflects the most current product information at time of printing. Please consult your dealer for individual vehicle features and specifications.