

08 ELLIPSE





**A DIESEL PUSHER LIKE NO OTHER.**

The 2008 Itasca Ellipse™ brings you Itasca® comfort and amenities with the enhanced performance, ride and handling of the all-new Maxum™ Chassis. Its innovative lowered-rail design offers exceptional cross-coach storage and outstanding floorplan flexibility for four unique models. You'll find SmartSpace™ features throughout each model that make the most of the available space

and over 7'2" of headroom that helps to create an incredibly spacious interior. A robust Cummins® ISL 8.9L 400-hp engine gets you to your destination with ease. For diesel-pusher power and performance with upscale amenities, make 2008 the year for your new Itasca Ellipse.

## STAY A WHILE

Sit back in the Stitchcraft furniture, available in soft UltraLeather™, and get ready for a night of entertainment. The 40KD features a 32" TV while the 40WD boasts a 37" LCD TV. The 40FD and 40TD can also be upgraded to a 37" LCD TV. The Home Theater Sound System with DVD player comes standard and you can add the King-Dome® in-motion satellite system to enjoy satellite programming whenever you travel (NA 40WD, receiver not included).\*

Floor-ducted heating and ceiling-ducted TrueAir® residential central air conditioning provide optimal climate control. A heat pump comes standard to take the chill off cool mornings without starting the furnace. For added thermal efficiency, dual-glazed, thermo-insulated windows are also standard. They come with day/night pleated shades for full control over light and privacy levels.

An 8,000-watt Cummins Onan® Quiet Diesel™ generator and a 2,000-watt inverter/charger provide alternative electrical power for your coach when a shoreline connection is not available.

\*Satellite TV requires a subscription. See your dealer for details.

**WEB** Select a Key Feature

The **WEB** icon designates a Winnebago Industries Key Feature. For further in-depth information and photos, use the Drop-down Menu or click on the 'Key Features' page at [winnebagoind.com](http://winnebagoind.com).



40FD Park Avenue with Concert Cherry

**ENTERTAINMENT CENTRAL** The stand-alone entertainment center on the 40FD and 40TD also offers an available electric fireplace for added, at-home comfort.



**EURO RECLINER** Relax and recline while you read a book or watch TV in the plush Euro Recliner, available on the 40FD and 40TD.



**WEB Rest Easy**® This multi-position lounge converts from a sofa to a recliner to a comfortable bed with a simple touch of a button.



40FD



**WEB titanium TOUCH:** The refrigerator features Titanium Touch™ stainless finish doors, a Winnebago Industries exclusive, which have the look of stainless steel, resist fingerprints and are warmer to the touch than traditional stainless steel. As an added benefit, you can even use your favorite kitchen magnets.

### GET COOKING

You'll love spending time in the kitchen with mission-style cabinets, satin-nickel hardware and Corian® solid-surface countertops. You'll appreciate the plentiful storage, pullout pantry, and four-door refrigerator/freezer so you can bring along plenty of food for all your travels.

Preparing dinner or a quick snack is easy with an Amana® range top, 30" residential microwave/convection oven and an Aqua-Pure® water filtration system with a separate faucet.

Your dining options include: a classic dining table, the new table/buffet and the available BenchMark® full-comfort dinette with large flip-up storage compartments and a comfortable bed conversion.



**CENTRAL VACUUM** The available Dirt Devil® central vacuum system has connections inside and outside the coach for quick and easy cleanups.



**FULL-EXTENSION DRAWER SLIDES** Drawers are sized to maximize storage, hold tight with positive latches and open fully for easy access.



**TABLE/BUFFET** The new available dining table/buffet offers an elegant place to dine and additional storage on the 40FD and 40KD.

## ADJUSTABLE COMFORT

You'll sleep better than ever in the Sleep Number® bed by Select Comfort™ that adjusts to be as firm or soft as you like it. The slideouts in the 40KD and 40WD feature a king-size bed.

Catch a late night talk show before bed on the standard 20" LCD TV (27" on 40WD). A rear stereo system is also standard, providing an AM/FM radio, CD/DVD player, alarm clock, headphone jack and a connection for your MP3 player. The available ceiling fan helps keep you cool on hot summer nights.

The bathroom includes a number of elegant appointments like ceramic tile floorcovering and a textured glass shower door. You'll also appreciate practical features like a flexible showerhead, a water heater that runs off LP or electric power and the Moen® Posi-Temp valve that regulates a consistent water temperature, even if the pressure fluctuates.

sleep  number.  
by SELECT COMFORT



**WEB** SLEEP NUMBER BED The Sleep Number bed by Select Comfort has digital hand controls that let you quickly and independently adjust each side of the bed to your ideal level of comfort and support. Your Sleep Number—The Key to a Better Night's Sleep.™

40FD Park Avenue with Concert Cherry



**BATH** A Corian countertop, flexible showerhead and a shower seat all come standard.



**BEDROOM**  
You'll find plenty of storage in the bedroom, including a large chest of drawers on the 40FD.

**WASHER/ DRYER** There is no need for a laundromat with the available combination washer/dryer featuring multiple wash, time and temperature cycles.



**HAMPER** The built-in hamper on the 40FD is large and neatly tucks away out of sight.

## FIT FOR YOU

The Ellipse provides a perfect fit for your driving style with a SmartWheel™ steering wheel that tilts and telescopes into perfect position and a high-back UltraLeather™ cab seat that adjusts on a six-way powered pedestal to fit any driver.

You'll have added confidence backing your Ellipse when using the Audiovox® rearview monitor. You can also add a sideview video camera system that allows the driver to view the sides of the coach when turning and maneuvering. An available GPS can get you where you're going without any wrong turns.

The RV Radio® gives you the option of listening to the AM/FM radio, a CD, weather band or your iPod/MP3 player. A handheld remote gives you full control of the radio from anywhere in the coach.

Upgrade the RV Radio to include the Sirius® Satellite radio package with over 130 channels of crystal-clear programming. This package comes with a complimentary six-month subscription, and is iPod ready so you can listen to and control your iPod through the stereo.



**KEYLESS REMOTE** Lock and unlock entrance and storage doors at the touch of a button.



**DASH** You'll find everything you need at your fingertips, including touchpad transmission controls and an RV Radio remote mounted to the steering wheel so you don't have to take your eyes off the road to change radio stations.



**WEB TRUELEVEL** Eliminate tank-level guesswork with our exclusive TrueLevel™ holding tank monitoring system. It incorporates detector cells that determine liquid levels from outside the tank. No probes means no more corrosion, just accurate readings, time after time.



**WEB POWERLINE** This energy management system monitors electrical usage and automatically cycles appliances on and off to prevent power overloads.



**WEB TRUEAIR** The residential central air conditioning system features a Coleman®-Mach® cooling unit in the basement that cools 40 percent faster and runs 10 percent quieter than roof-pod units. A heat pump comes standard so you can take the chill out of a cool morning without starting the furnace.



**WEB 3 position controls** Raise and lower the hydraulic jacks from any of three convenient locations. Do the job from the driver's seat or step outside and use the controls at the entrance door or service center to monitor the jacks as you lower them. No hassle. No guesswork. Just a level coach at your convenience.

## BRING MORE GEAR

Innovative Smart Storage™ features put the Ellipse at the top of the list of the most user-friendly diesel motor homes. You'll be amazed at the exterior pass-through storage made possible by the innovative lowered-rail design of the Maxum Chassis.

The large storage bays come with movable panels that allow you to customize compartments for your gear. A 90" sliding storage tray is also available to make storage more accessible from both sides of the coach. Smart Storage also provides a custom sleeve for a 7' folding step ladder and four storage containers with lids.

The Ellipse places all available electrical and plumbing connections in one convenient location using color-coded labels for hassle-free hookups. Other convenient service center features include a hookup for a portable satellite dish, a clip for gloves and the full coach water filtration system.



**SMART STORAGE** The new Maxum Chassis has a lowered-rail design that allows for more Smart Storage features, including more pass-through storage with bins and movable panels that can be configured to best fit your needs.



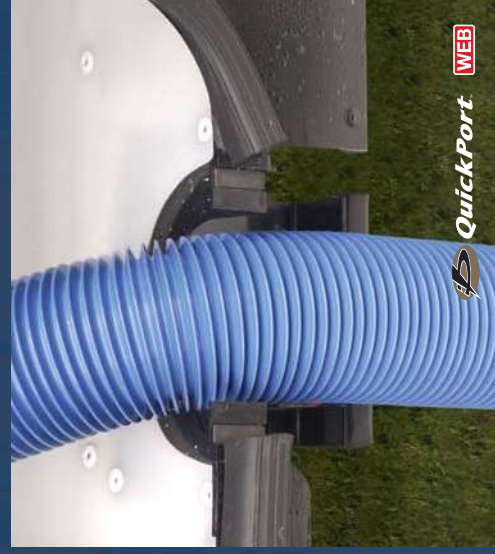
**EXTERIOR ENTERTAINMENT CENTER** Your exterior entertainment center can be enhanced with a pullout 19" LCD TV and DVD player.



**FLEXIBLE STORAGE** Choose the available slideout tray. It is 90" long and slides out in both directions for easy access to your stored items.

## SMART STORAGE

**SERVICE CENTER** Connections are color-coded to make hookups fast and easy.



## QuickPort



## QuickConnect

**HOOUPS** The QuickPort® service connection hatch is fast and simple, allowing the bay door to close while your hookups are connected. The QuickConnect® coupling valve on the sewer hose makes for quick and clean hookups and has its own storage holster.

# MAXUM CHASSIS

WEB

## LEAVE NOTHING BEHIND

The Maxum Chassis™ offers up to 220 cubic feet of exterior coach storage so you can load up with everything you need for weeks on the road. The secret is its revolutionary lowered-rail design. This all-new feat of chassis engineering repositions the chassis frame rails, increasing the cross-coach storage height for the most efficient use of space. Combined with Winnebago Industries® Smart Storage™ philosophy, you get taller compartment openings, larger pass-through compartments, and a storage capacity that no other chassis in its class can match.

## ENJOY THE RIDE

Winnebago Industries worked closely with Freightliner® to combine our exclusive SuperStructure® with the XCL Chassis to create a stronger, stiffer chassis for a whole new level of travel comfort. The Maxum Chassis eliminates much of the road vibration with a combination of innovative structural design and shock-absorbing components like rear air suspension. Take a ride in the Itasca Ellipse™ and feel how the Maxum Chassis with its lower center of gravity, rigid framework and 55° wheel cut delivers the smoothest ride and handling ever.



### THE MAXUM ADVANTAGE

- 32,350-lb. GVWR
- 400-hp ISL Cummins® clean air diesel engine
- Touchpad shifter
- Allison® 6-speed transmission
- 10,000-lb. hitch<sup>6</sup>
- 4-wheel ABS anti-lock brakes
- NeWay® air suspension
- Engine exhaust brake
- 55° wheel cut
- Michelin® tires



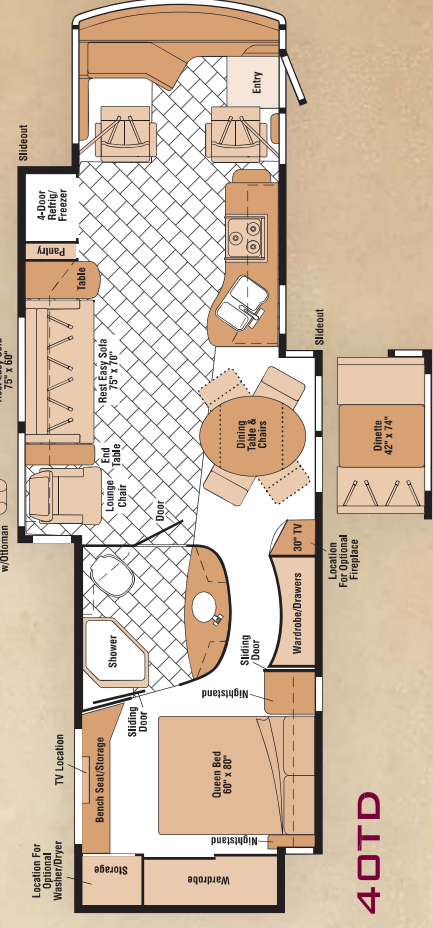
THE LEADER AT EVERY TURN™

3-Year/50,000-Mile Limited Warranty (including towing and roadside assistance)—more than 400 North American service locations, 60 Freightliner® RV Oasis locations and a 24/7 help line add up to a commitment your customers can count on.



Note: Dimensions shown are for sleeping space only and may vary due to styling differences. Dashed lines denote overhead storage areas.

-  Carpet
-  Ceramic Tile Floorcovering
-  Seat Belts



# 08 ELLIPSE SPECIFICATIONS

WEIGHTS & MEASURES		40FD	40KD	40WD NEW	40TD
Length		39'11"	39'11"	39'11"	39'11"
Exterior Height <sup>1</sup>		12'4"	12'4"	12'4"	12'4"
Exterior Width <sup>2</sup>		8'5.5"	8'5.5"	8'5.5"	8'5.5"
Exterior Storage <sup>3</sup> (cu. ft.)		220	220	206	205
Awning Length		20'	20'	15'	20'
Interior Height		7'2.5"	7'2.5"	7'2.5"	7'2.5"
Interior Width		8'0.5"	8'0.5"	8'0.5"	8'0.5"
Freshwater Capacity w/Heater <sup>4</sup> (gal.)		103	103	103	103
Holding Tank Capacity - Black/Gray <sup>4</sup> (gal.)		49 / 92	49 / 92	51 / 117	51 / 117
LP Capacity <sup>5</sup> (gal.)		31	31	31	31
Fuel Capacity (gal.)		100	100	100	100
GCWR <sup>6</sup> (lbs.)		42,350	42,350	42,350	42,350
GVWR <sup>6</sup> (lbs.)		32,350	32,350	32,350	32,350
GAWR - Front (lbs.)		12,350	12,350	12,350	12,350
GAWR - Rear (lbs.)		20,000	20,000	20,000	20,000
Wheelbase		267"	267"	267"	267"

AUTOMOTIVE/CHASSIS		40FD	40KD	40WD	40TD
<b>Freightliner® Maxum™ Chassis</b> - Cummins® ISL 8.9L turbo-charged diesel, 400-hp, rear radiator, Allison® 6-speed electronic 3000 MH transmission, NeWay® front & rear air suspension, 170-amp alternator, 4-wheel ABS, engine compression brake		S	S	S	S
<b>Air Accessory Manifold</b> quick connect, air pressure indicator, manual air shutoff, <b>Air Horns</b> underhood mount, <b>Battery Disconnect</b> chassis, manual, <b>Leveling Jacks</b> hydraulic, 3-position automatic controls, <b>Trailer Hitch</b> <sup>10</sup> 10,000-lb. drawbar/500 lbs. maximum vertical tongue weight & wiring, 7-pin connector, <b>Wheels</b> stylized aluminum		S	S	S	S

CAB AREA & DRIVER CONVENIENCES		40FD	40KD	40WD	40TD
<b>Cab Seats (UltraLeather™)</b> multi-position armrests, headrest, adjustable lumbar support, multi-adjustable recline, <b>Cab Seat Pedestal</b> swivel/slide, manual (passenger), 6-way power assist (driver), <b>Compass</b> electronic w/outdoor thermometer, <b>Console Center Cabinet, Cruise Control, Defroster Fans (2)</b> auxiliary 2-speed w/instrument panel switch, <b>Exhaust Brake Control, Freightliner Information Center</b> (see Freightliner's Owner's Manual), <b>Map Lights (2), Monitor System</b> rearview, black/white, single camera & 1-way audio, Audiovox® <b>Power Door Lock</b> keyless entry w/remote, <b>Powerpoints</b> 12-volt DC, <b>Shades</b> cab windows, roller, <b>Steering Wheel</b> custom, black leather, SmartWheel™ w/power-assist, tilt, telescope column, <b>Sunvisors</b> powered, <b>Trim Panel</b> driver & passenger sides, <b>Window (Driver)</b> full-slider w/screen, dual-glazed, <b>Window (Passenger)</b> partial, vertical slider w/screen, dual-glazed, <b>Windshield Wipers</b> intermittent		S	S	S	S
<b>Cab Seat</b> passenger w/footrest, <b>GPS Navigation System</b> Alpine®, <b>Video Camera System</b> 2 side-mounted cameras, turn signal activated		0	0	0	0

ENTERTAINMENT		40FD	40KD	40WD	40TD
<b>C.B. Wire Prep</b> 12-volt DC power supply, <b>Entertainment Center (Exterior)</b> AM/FM radio, CD player w/remote, DC receptacle, AC duplex receptacle, TV jack, radio antenna, speakers (2), <b>Home Theater Sound System</b> amplifier, CD/DVD player, receiver, speakers (5), subwoofer, <b>RV Radio</b> <sup>11</sup> (Cab) AM/FM stereo/CD Player, remotes, iPod/iPod MP3 input, roof-mounted flexible rubber antenna, speakers (4), <b>Radio Power Switch</b> main/auxiliary battery, <b>Satellite System Ready, Stereo System (Bedroom)</b> AM/FM radio, CD/DVD player, alarm clock, headphone jack, front auxiliary input (plays MP3 through speakers), <b>Telephone</b> input & interior jacks, <b>TV 20"</b> AC color, bedroom, stereo w/remote, LCD (27" on 40WD), <b>TV Enhancement Package</b> antenna (amplified), interior jacks, coax wiring, cable input (TV & portable satellite dish), exterior jack, <b>Video Selection System</b>		S	S	S	S
<b>Compact Multidisc Changer</b> w/remote & 10-disc changer, <b>Satellite Dish Antenna</b> RV digital, automatic, King-Dome® <b>Satellite Dish</b> RV digital, in-motion, dual LNB, King-Dome (NA 40WD), <b>Satellite Radio</b> Sirius® 6-month subscription included, iPod interface, cable connect, <b>Entertainment Center (Exterior)</b> AM/FM radio, CD/DVD player w/remote, built-in alarm clock, headphone jack, iPod/iPod MP3 input, DC receptacle, AC duplex receptacle, TV LCD 19" AC color, stereo w/remote, speakers (2), bass speaker, TV jack, radio antenna		0	0	0	0
<b>Fireplace</b> electric, front slideout entertainment center (NA w/BenchMark® dinette on 40TD)		0	0	0	0
<b>TV 27"</b> AC color, stereo w/remote, LCD, bedroom		0	0	0	0
<b>TV 30"</b> AC color, stereo w/remote, Slim CRT		S	S	S	S
<b>TV 32"</b> AC color, stereo w/remote, LCD, High Definition		0	0	0	0
<b>TV 37"</b> AC color, stereo w/remote, LCD, High Definition		0	0	0	0

INTERIOR		40FD	40KD	40WD	40TD
<b>Ceiling Vinyl, Curtain</b> front wraparound, <b>Lighting</b> indirect above front overhead cabinets, <b>Light</b> stepwell w/interior switch, <b>Lights</b> ceiling w/wall switches, <b>Lights</b> incandescent, private toilet room, <b>Lights</b> fluorescent, recessed, galley, dinette, lounge & bath hallway w/2-way wall switches, <b>Lights</b> reading, <b>Mini Blinds</b> galley & bath, <b>Shades</b> pleated day/night, lounge, dinette & bedroom, <b>Shade Package</b> roof vents, <b>Sliding Stepwell Cover Panel</b> powered, <b>Windows</b> dual-glazed/thermo-insulated		S	S	S	S
<b>Vacuum Cleaner</b> central, Dirt Devil®		0	0	0	0

FURNITURE		40FD	40KD	40WD	40TD
<b>BenchMark® Full-Comfort Dinette (Fabric)</b> w/access to storage below, child seat tether anchor		0	0	0	0
<b>Chair (Fabric)</b> hoop-based, recline, footrest		S	S	S	S
<b>Chair (UltraLeather)</b> Euro Recliner w/ottoman		0	0	0	0
<b>Dinette (UltraLeather)</b> U-shaped w/access to storage below		S	S	S	S
<b>Dining Table &amp; Chairs</b> freestanding (2), folding (2)		0	0	0	0
<b>Dining Table/Buffer &amp; Chairs</b> freestanding (2), folding (2)		S	S	S	S
<b>Entertainment Center</b>		0	0	0	0
<b>J-Lounge (UltraLeather)</b> access to storage below, throw pillows (2)		S	S	S	S
<b>Rest Easy® Multi-Position Lounge (Fabric 75" x 60")</b> powered		0	0	0	0
<b>Rest Easy Multi-Position Lounge (Fabric 75" x 70")</b> powered, w/dual trundals		0	0	0	0
<b>Rest Easy Multi-Position Lounge (UltraLeather 75" x 60")</b> powered		0	0	0	0
<b>Rest Easy Multi-Position Lounge (UltraLeather 75" x 70")</b> powered, w/dual trundals		0	0	0	0

FURNITURE		40FD	40KD	40WD	40TD
<b>Rest Easy Multi-Position Lounge</b> (Fabric 75" x 60") powered, w/dual trundals, <b>Rest Easy Multi-Position Lounge</b> (UltraLeather 75" x 60") dual control, powered		0	0	0	0
<b>Sofa (Fabric 48" x 70")</b> access to storage below, removable armrests, throw pillows		\$	\$		
<b>Sofa (UltraLeather 48" x 70")</b> access to storage below, removable armrests, throw pillows		0	0		

GALLEY		40FD	40KD	40WD	40TD
<b>Countertop</b> Corian® solid-surface w/backsplash, <b>Faucet</b> single-control w/pullout sprayer, Moen® <b>Microwave/Convection Oven</b> w/range fan, residential 30" stainless steel, <b>Pantry, Powerpoint</b> 12-volt DC receptacle, <b>Refrigerator/Freezer</b> 4-door w/icemaker, Titanium Touch™ stainless finish, Norcold® <b>Range Cover</b> countertop material, <b>Range Top</b> 3-burner, 1 high-output w/storage below, recessed, sealed burners, Amana® <b>Roof Vent</b> powered ventilator fan, <b>Sink-Covers</b> countertop material, <b>Water Filtration System</b> Aqua-Pure® separate faucet, <b>Wastepaper Basket</b>		\$	\$	\$	\$
<b>Countertop Extension</b> pullout					\$
<b>Hutch</b> decorative doors, adjustable shelves			\$		

BATH		40FD	40KD	40WD	40TD
<b>Cabinet</b> lavatory, <b>Cabinet</b> linen, <b>Cabinet</b> medicine, <b>Countertop</b> Corian solid-surface w/backsplash, <b>Faucet</b> (Lavatory) single control, <b>Faucet</b> (Shower) flexible hand-held, Moen Posi-Temp® <b>Light</b> shower, <b>Roof Vent</b> powered ventilator fan, private toilet room, <b>Shower Door</b> textured glass, <b>Shower Seat</b>		\$	\$	\$	\$

BEDROOM		40FD	40KD	40WD	40TD
<b>Decorative Light</b> ceiling, <b>Headboard</b>		\$	\$	\$	\$
<b>Bed</b> Sleep Number® by Select Comfort™, queen-size mattress		\$	\$	\$	\$
<b>Bed</b> Sleep Number by Select Comfort, king-size mattress		\$	\$	\$	\$
<b>Ceiling Fan</b>		0	0	0	0

EXTERIOR		40FD	40KD	40WD	40TD
<b>Awning Rails</b> w/rain gutters, <b>Awnings</b> patio w/wind sensor & remote, entrance door, electric, <b>Door</b> entrance w/separate retractable screen door, deadbolt lock, keyless entry w/remote, <b>Entrance Door Step</b> double, electric w/doorjamb switch, <b>Front Exterior Protective Mask, Ladder, Light</b> porch w/interior switch, <b>Light</b> underhood, <b>Lights</b> compartment, <b>Light</b> service, driver side, <b>Locking Fuel-Fill Doors, Mirrors</b> electric remote w/defrost, chrome head, turn signal, swing-away, <b>Mudflaps</b> (2) rear, <b>Mud Guard</b> full-width, <b>Receptacle</b> AC duplex, <b>Sidewall Skin</b> 1-piece smooth fiberglass, high-gloss, <b>Step Ladder</b> folding, <b>Storage Compartments</b> insulated doors, trunk liner, gas cylinders, Trimark® KeyOne™ System, paddle latch, <b>Storage Containers</b> w/lids, set of 4		\$	\$	\$	\$
<b>Awnings</b> windows, acrylic, <b>Compartment Tray</b> slideout, 90" long, extends out both directions		0	0	0	0

SYSTEMS		40FD	40KD	40WD	40TD
<b>HEATING &amp; A/C – Automotive Heater/Air Conditioner, TrueAir™ Residential Central Air Conditioning System</b> w/heat pump		\$	\$	\$	\$
<b>Furnace</b> 25,000 BTU, low-profile, secondary		\$	\$	\$	\$
<b>Furnace</b> 35,000 BTU, low-profile, primary		\$	\$		
<b>Furnace</b> 40,000 BTU, low-profile, w/2-stage blower, primary		\$	\$	\$	\$
<b>ELECTRICAL – Auxiliary Start Circuit, Batteries (3) (Coach) deep-cycle, Battery (Chassis) Disconnect System</b> manual, <b>Battery (Chassis) Charger/Maintainer, Dual Battery</b> charge control (automatic), <b>Electrical Distribution System</b> AC & DC breaker panels, <b>Generator</b> 8,000-watt, Cummins Onan® Quiet Diesel™ <b>Generator/Shoreline Automatic Changeover Switch, Converter/Inverter/Charger</b> DC/AC, 2,000-watt w/remote panel, <b>OnePlace® Systems Center</b> wall-mounted, PowerLine® energy management display, battery digital voltmeter, courtesy light, generator hourmeter gauge, generator start/stop switch, heating & A/C thermostat, holding tank levels, LP tank level, solar panel/battery charger light, water heater switch, water heater, "on" light & pilot indicator light, water pump switch, water tank level, <b>Power Cord</b> 50-amp, Superflex <b>Service Center (Electrical)</b> cable input, power cord, QuickPort® service connection hatch, shoreline/generator automatic changeover switch, telephone input, <b>Solar Panel</b> 10-watt battery charger		0	0	0	0
<b>Generator Automatic Start System</b>		\$	\$	\$	\$
<b>PLUMBING/LP – Drain</b> 1½" water tank, <b>Service Center (Drainage/Water)</b> drainage valves, holding tank flushing system (black tank only), city water hookup/tank diverter fill, drain for freshwater system, exterior wash station w/pump switch, glove holder, paper towel holder, QuickPort service connection hatch, portable satellite hookup, 10' sewer hose w/QuickConnect® coupling valve, <b>Tank</b> holding, heated compartment, <b>Tank LP</b> , permanent mount w/gauge, <b>TrueLevel™ Holding Tank Monitoring System, Washer/Dryer Prep, Water Heater</b> 10-gallon electronic ignition, LP gas/120 VAC w/motoraid, <b>Water System Winterization Package</b> water heater bypass valve & siphon tube, <b>Water Hookup city, Water Pump</b> demand, <b>Water Filtration System</b> package housing, filter, wrench		0	0	0	0
<b>Washer/Dryer Combination</b>		0	0	0	0

SAFETY		40FD	40KD	40WD	40TD
<b>Assist Bar(s)</b> interior, <b>Assist Handle</b> exterior, acrylic, <b>Bumpers</b> front & rear, <b>Child Seat Tether Anchor</b> (w/optional dimette), <b>Detectors/Alarms</b> LP leak, smoke, carbon monoxide, <b>Fire Extinguisher</b> 10 BC, <b>Ground Fault Interrupter, Light(s)</b> high-mount brakelamp(s) <b>Lights</b> daytime running, docking, fog, <b>Lights</b> courtesy w/wall switches, <b>Lights</b> courtesy blink, <b>Seat Belts</b> cab, 3-point, <b>Seat Belts</b> lap (in selected areas), <b>Slideroom Master Lock Switch</b> key activated, <b>Window</b> escape, <b>Windshield</b> laminated safety glass		\$	\$	\$	\$

WARRANTY		40FD	40KD	40WD	40TD
<b>12-month/15,000-mile basic warranty,<sup>6</sup> 36-month/36,000-mile limited warranty on structure,<sup>8</sup> 10-year limited parts &amp; labor warranty on roof skin<sup>9</sup></b>		\$	\$	\$	\$

- The height of each model is measured to the top of the tallest standard feature and is based on the curb weight of a typically equipped unit. The actual height of your vehicle may vary by several inches depending on chassis or equipment variations. Please contact your dealer for further information.
- Ellipse floorplans feature a wide-body design - over 96". In making your purchase decision, you should be aware that some states restrict access on some or all state roads to 96" in body width. Before making your purchase decision, you should confirm the road usage laws in the states of interest to you.
- The load capacity of your motor home is designated by weight, not by volume, so you cannot necessarily use all available space when loading your motor home. Capacities are based on measurements prior to tank installation. Slight capacity variations can result due to installation applications.
- Capacities shown are tank manufacturer's listed water capacity (W.C.). Actual filled LP capacity is 80% of listing due to overfilling prevention device on tank.
- Actual towing capacity is dependent on your particular loading and towing circumstances which includes the GVWR, GAWR, and GCWR as well as adequate trailer brakes. Please refer to the Operator's Manual of your vehicle for further towing information.
- See separate chassis warranty.
- See your dealer for complete warranty information.

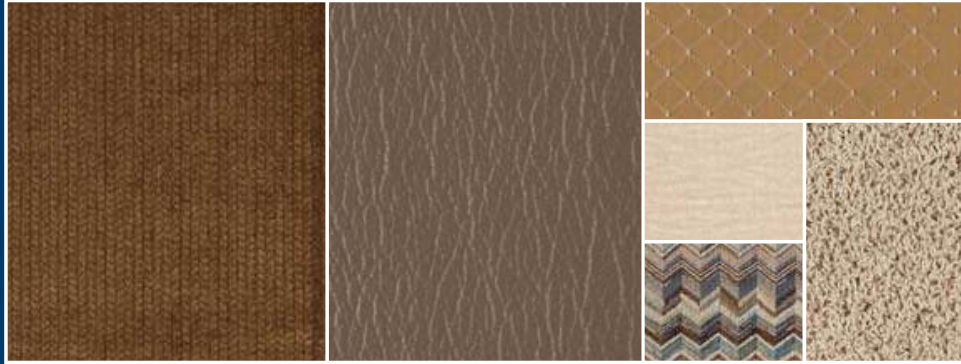
NA Not Available  
 \$ Standard  
 0 Optional

Not all items available in combination. See dealer for details.  
 Winnebago Industries® continuing program of product improvement makes specifications, equipment, model availability, and prices subject to change without notice. Comparisons to other motor homes are based on the most recent information available at printing.

## INTERIOR DECOR

Choose from three fabric selections and three cabinet wood choices with hidden hinges.

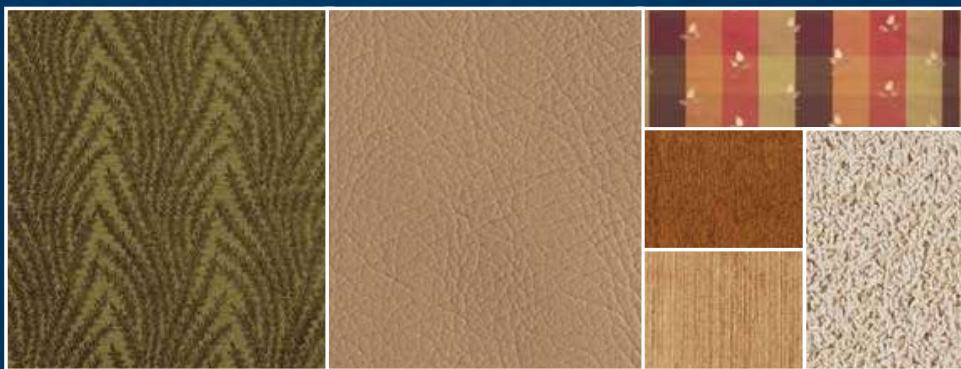
MAIN	ULTRA-LEATHER	BEDSPREAD	
		ACCENT	CARPET
		ACCENT	



Bermuda Sands w/available Pine Cone UltraLeather™



Park Avenue w/available Timber UltraLeather



English Thyme w/available Timber UltraLeather



Concert Cherry



Washed Maple



Sierra Maple

## FULL-BODY PAINT



Cranberry



Fern



Autumnwood



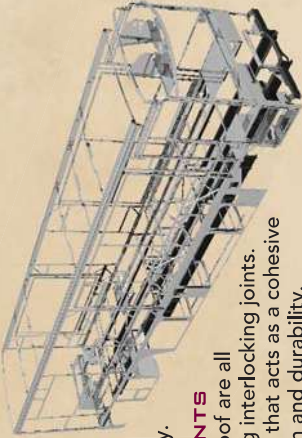
Midnight



**BUILT BY WINNEBAGO INDUSTRIES.  
BUILT TO LAST.**

Itasca motor homes are built by Winnebago Industries, the company that defined motor homes. The company that built its reputation on quality construction. The company that transformed the motor home concept into a way of life.

Today, Winnebago Industries brings that reputation for quality and its 49-year history of motor home innovation to the design and construction of every motor home. It's all a part of SuperStructure® our exclusive system of proprietary structural components that instills each motor home with improved strength and durability.



**SOLID FOUNDATION** Steel and aluminum truss work provides a solid, flat foundation for the floor and sidewalls. Winnebago Industries engineers also take special care to distribute the weight of components to ensure proper handling and stability.



**INTERLOCKING JOINTS**

The floor, sidewalls and roof are all integrally connected using interlocking joints. This creates a coach body that acts as a cohesive unit for improved strength and durability.



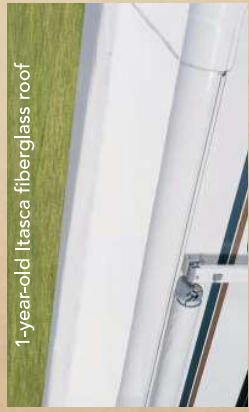
**WEB**

**E-COATING** Winnebago Industries employs an exclusive 12-stage automotive-style dip tank process to apply an advanced electrodeposition coating on critical steel components for superior corrosion protection.

**THERMO-PANEL® SIDEWALLS** Invented by Winnebago Industries, Thermo-Panel construction combines a fiberglass panel, high-density, block-foam insulation and aluminum support structures to create some of the most durable, lightweight sidewalls in the industry.

**ATTENTION TO DETAIL** Whether it's sending every coach through a high-pressure water tunnel to check for leaks or labeling each individual wire and bar-coding parts to save time and frustration during service, Winnebago Industries considers every detail to ensure your Itasca motor home provides you with years of pleasure.

**STRONG AS STEEL** Appliances are secured directly to embedded steel plates for added safety. Windshields are also mounted in steel with an automotive-style sealant; lesser designs use a rubber gasket to mount the windshield in fiberglass.



1-year-old Itasca fiberglass roof



1-year-old competitor's rubber roof

**FIBERGLASS ROOF** The Ellipse features a crowned, one-piece fiberglass roof, backed with a 10-year limited parts-and-labor roof skin warranty. Fiberglass offers superior strength, attractiveness and durability over the rubber roofs found on many competitive models which can chalk, streak and degrade over time. Fiberglass also provides increased puncture and tear resistance.



**WINNEBAGOIND.COM** Visit us on the web for more info on all of our motor homes, the latest product updates and a host of web-exclusive content.

**TAKE A TOUR** We're proud of our process, state-of-the-art facilities and the people who make Winnebago Industries number one. We invite you to visit our factory in Forest City, Iowa for a first-hand look at the dedication and technology behind every motor home we build.

**RECOGNIZED QUALITY** The Recreation Vehicle Dealer Association annually rates RV manufacturers and awards the Quality Circle award to manufacturers who provide exceptional products, service and support. Winnebago Industries is proud to be the only manufacturer to receive this award every year since its inception.

**COMMITTED TO SERVICE** We back our motor homes with the industry's best service after the sale.

- 12-month/15,000-mile basic limited warranty
- 36-month/36,000-mile warranty on structure
- Standard 10-year limited parts-and-labor roof skin warranty
- Complimentary 24-hour roadside assistance program
  - RV Technical Assistance Hotline
  - RV Service Appointment Assistance
- Emergency Trip Interruption
- Nationwide Trip Routing
- Emergency Message Service
- Fee-Free Travelers Cheques
- TripSaver Fast Track Parts. TripSaver guarantees that in-stock warranty parts ship directly to your dealer within 24 hours.
- National dealer service network

**WIT CLUB** Itasca owners are like family. Joining the Winnebago-Itasca Travelers is a great way to meet and travel with other Itasca enthusiasts.

Members enjoy:

- Caravans and rallies
- Local and state group activities
- RV travel benefits

For Sales and Service Information Contact:



Built proudly by



NYSE listing: WGO

©2007 Winnebago Industries, Inc.

Printed in USA

Seat belts are your most important hookup. Always buckle up.