

# LEPRECHAUN



**Coachmen**  
Leader to the Great Outdoors.



# LEPRECHAUN

CLASS C MOTORHOMES



**Coachmen**  
Leader to the Great Outdoors.



**240FS shown with Cocoa Ash cabinets and Sunset décor**

## LEPRECHAUN CLASS C MOTORHOMES

The Coachmen Leprechaun offers you better construction and interior appointments than others in its class. Generations of Leprechaun owners appreciate it's long list of safety and convenience features. Others will admire your ability to differentiate yourself with Leprechaun's styling. Treat yourself to an expansive list of standard features and rich appointments including night shades, raised panel hardwood upper cabinet doors and upgraded flooring and furniture. For over 50 years, Coachmen has been providing a product you can rely on. You'll take pride in ownership of one of the top selling brands in the industry.



240FS shown

Wrap around dinette • Fireplace (standard 240FS, optional 319MB) • High quality furniture and fabrics • Slideout entertainment center



240FS shown

60"x80" residential queen bed • Walk-in closet  
Pleated night shades • Spin-around TV for bedroom • Even Cool ducted A/C system

**KITCHEN:** Hardwood cabinet door and drawer fronts • Large, one piece galley countertops • Congoleum designer carefree flooring • Optional convection microwave and standard oven **BATHROOM:** Porcelain foot flush toilet • Vanity mirror with makeup light bar (some models) • Double bowl sink (N/A 260DS) • Shower skylight **LIVING:** Bright LED ceiling lights • Smooth transition from cab to living area • Single child safety tether and occupancy seat safety belts • Optional swivel driver & passenger seats **BEDROOM:** Power vent fan in bedroom and cabover (Luxury Package)

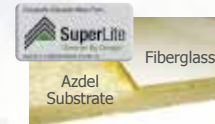
# LEPRECHAUN EXTERIOR FEATURES



2" thick aluminum cage constructed, color-infused hi-gloss fiberglass sidewalls.



Coachmen's Even Cool™ air conditioning system is ducted through the crowned, vacuum-bonded roof. The system uses AMOCO insulated ductwork with **radiused corners** to provide maximum cooling efficiency.



Azdel SuperLite™ sidewall substrate – lightweight, durable and moisture resistant.

Molded fiberglass front cap with LED lights is stylish and aerodynamic, adding an automotive touch. (optional)

Slide room awnings (where applicable) to protect your slide room from debris.



Warehouse exterior storage – made of anti-corrosive polymer plastic, the seamless and durable exterior storage compartments are built to last.



Fiberglass running boards and fender skirts.



Exterior refrigerator (part of Exterior Camp Kitchen option) puts your favorite foods and beverages outside for quick and easy access. (317SA and 319MB only)



Exterior camp kitchen featuring running water and sink. (317SA, 319MB only)  
Exterior camp table (shown on unit). (optional on 210RS, 240FS, 260DS)



Standard ONAN 4.0kw gas generator gives you 30 AMP power when shoreline power is not available.



Exterior Entertainment Center w/LCD TV/Stereo/DVD and Speakers. (optional)



Solar panel plug-in connection and integrated entry step with 80" entry door and auxiliary battery box.

Solar-ready Connection (standard)



Leprechaun's one-touch power awning features adjustable arms for ease of use.

## STANDARD

### WARRANTY

- Motorhome – 12 Month/ 12,000 mile limited warranty
- Ford Chassis – 36 month/ 36,000 mile bumper-to-bumper warranty
- Ford Powertrain – 60 month/ 60,000 mile warranty
- Chevy Chassis – 36 month/ 36,000 mile bumper-to-bumper warranty
- Chevy Powertrain – 60 month/ 60,000 mile warranty
- Travel Easy Roadside Assistance

### AUTOMOTIVE/EXTERIOR/CONSTRUCTION

- Deluxe Chassis Package
- Driver & Passenger Air Bags
- Factory Reclining Driver & Passenger Seats
- Cruise Control
- Tilt Steering Wheel
- Dash Air Conditioning
- Power Windows & Locks
- Exterior Upgrade Mirrors
- Vacu-Bond Laminated 2" Steel Floor
- Vacu-Bond Laminated 2" Aluminum Sidewalls
- Vacu-Bond Laminated Crowned Aluminum Roof w/TPO Exterior Surface
- Steel Entry Step Box
- 80" Radius Entrance Door w/Window & Deadbolt Lock
- Drop-down Integrated Entry Step
- Vinyl Graphics Package
- Roto-cast Rear Warehouse Trunk Box w/Plasti-Cote Side Boxes
- LED Rear Storage Trunk Light
- Rear Steel Tube Bumper
- Stainless Steel Wheel Liners
- Upgraded Exterior Range Vent
- Back-up Camera

### INTERIOR APPOINTMENTS

- Cocoa Woodgrain Cabinetry
- Hardwood Cabinet Doors & Drawers Fronts
- Glass Insert Cabinet Doors (In Select Areas)
- Cabinet Hardware - Satin Nickel
- Congoleum "Designer Series" Flooring Throughout
- Booth Dinette w/Dream Dinette Mechanism (317SA)
- J-Dinette with Additional Pull-out Seat (210RS, 260DS, 310BH)
- U-Dinette (220QB, 240FS, 319MB)
- Barrel Chair (240FS)
- Single Child Tether at Forward Facing Dinette Seat
- Jackknife Sofa (N/A 210RS, 220QB)
- Upgraded "Shaker Style" Bath Door
- Upgraded Slideout Facer Board
- Interior Safety Grab Handle at Entrance Door
- Vinyl Padded Up and Angle Pads
- Magazine Rack Above Entrance Door

### INTERIOR EQUIPMENT

- Bedroom TV Prep
- Jack Wing TV Antenna
- LP Leak Alarm
- Smoke Detector

- Carbon Monoxide Detector
- Fire Extinguisher
- Pre-wired for Satellite Dish Thru Exterior Coax Input

### GALLEY

- Attwood 3-Burner Cooktop w/Oven
- Satin Nickel Kitchen Faucet w/Sprayer
- Microwave
- Flush Mount, Double Door Refrigerator w/Gloss Black Door Inserts
- Single Bowl Kitchen Sink & Sink Cover (260DS)
- Double Bowl Kitchen Sink & Sink Cover (N/A 260DS)
- Power, Lighted Range Hood
- 1-Piece Thermo Foil Countertops
- Kitchen Flip-up Countertop Extension (220QB, 240FS, 260DS)
- Tile Wall Border

### BATH AND WATER

- Water Works Panel w/Winterization & Black Tank Flush
- Waste Termination Center Easy Access Door
- Exterior Shower
- Molded Plastic Shower Pan & Surround
- Satin Nickel Shower Head & Faucet
- Shower Skylight
- Single Bowl Bathroom Sink
- Satin Nickel Single Lever Bathroom Faucet
- Bathroom Vanity Mirror
- Satin Nickel Towel Ring, Toilet Paper Holder & Robe Hooks
- Porcelain Foot Flush Toilet
- Attwood 6-Gallon Gas DSI Water Heater
- Power Bath Vent Fan
- Demand Water Pump

### SLEEPING

- Bunk Beds w/Sofa/Sleeper Lower Bunk (310BH)
- Standard Mattress (220QB, 317SA, 319MB, 310BH)
- Standard Flip-Mattress (210RS, 240FS, 260DS)
- Cabover Bunk - 57" x 95"
- Cabover Privacy Curtain
- Interior Cab Privacy Curtain
- Upgrade Bedspread
- Upgrade Headboard

### ELECTRICAL/HEATING/AC

- Bed Area 110V CPAP Ready Area & 12V/USB Charging Station
- Exterior Solar Panel Connection ("Furriion" Solar Panel Sold Separate)
- Exterior TV Ready Compartment
- Exterior Illuminated Acrylic Safety Grab Handle
- Exterior LED Patio Light
- Systems Command Center
- "Easy Access" Auxiliary Battery in Step-well
- Wall Mounted Thermostat
- GFI Circuits (Kitchen, Bathroom, Exterior)
- Auxiliary Battery Disconnect
- "Even Cool" Roof Air Ducting System
- 13,500 BTU Ducted Roof Air Conditioner
- 30K BTU Ducted Furnace (N/A 210RS, 220QB)
- 20K BTU Ducted Furnace (210RS, 220QB)
- 30 Amp Power Cord
- 55 Amp Electronic Converter

### LEPRECHAUN BANNER EDITION (Mandatory Option)

- Hi-gloss Color Infused "Carmel" Lamulux 4000 Sidewalls
- Azdel "Super Lite" Composite Sidewall
- Fiberglass Running Boards
- Tinted Radius Slider Windows-Safety Glass
- Rear Exterior Roof Ladder
- Upgraded Furniture
- Child Safety Net & Ladder (N/A with Front Entertainment Center)
- Bluetooth Touch Screen Radio w/Built-in Back-up Monitor (GPS Ready)
- Power Awning w/Vinyl Weather Guard
- LED Taillights Lights w/Center Bar & LED Running Lights
- LED Ceiling Lights Throughout
- Pop-up Kitchen Receipt & USB Ports
- Glass Shower Door
- Pleated Night Shades Thru-out
- Roller Bearing Drawer Glides
- 50 Gallon Fresh Water Tank
- 5,000 lb. Towing Hitch w/7-way Plug (Ford E350 & Chevy Chassis)
- 7,500 lb. Towing Hitch w/7-way Plug (Ford E450 Chassis)
- Slideout Awning(s)
- 4.0kw Onan Gas Generator
- Residential Queen Bed - 60"x80"
- Travel Easy Roadside Assistance

## OPTIONAL

### STAND ALONE OPTIONS

- 32" LCD TV/DVD - Swing Arm/Coach (210RS, 220QB, 260DS, 310BH) (N/A 310BH with Entertainment Package)
- 12V 32" LCD TV/DVD - Slideout Entertainment Center (Mandatory 240FS)
- 32" LCD TV/DVD - Pull Down in Dinette Overhead Cabinet (317SA)
- 40" LCD TV/DVD - Pop-up Power Lift & Stereo (Mandatory 319MB)
- Front Entertainment Center - 32" LCD TV/DVD, Stereo & Sound Bar (N/A 240FS, 319MB) (N/A 310BH with Entertainment Package)
- Entertainment Package (310BH) 32" TV/DVD Coach & Bunk Area 24" LCD TV with DVD, Stereo & Game port
- 24" LCD TV and DVD in Bedroom (N/A 220QB, 240FS)
- 15" LCD TV and DVD in Bedroom (220QB)
- Exterior Entertainment Center with 32" LCD TV, DVD & Stereo (317SA, 319MB)
- Exterior Entertainment Center with 24" LCD TV, DVD, & Stereo) (N/A 317SA, 319MB)
- King Tailgater Autotracking Satellite System with Dish Network Receiver (Available only with Front Entertainment Center Option and 319MB)
- Exterior Camp Table, Sink & Refrigerator (317SA, 319MB)
- Exterior Camp Table (210RS, 240FS, 260DS)

- Dual Recliners (N/A 310BH)
- Driver Swivel Seat
- Passenger Swivel Seat (N/A 317SA)
- Cockpit Folding Table (Ford Only, Recommended with Swivel Seat Option)
- Exterior Windshield Cover (Recommended with Swivel Seat Option)
- 15,000 BTU Low-Profile Ducted Air Conditioner w/Heat Pump
- Electric Fireplace (Optional 319MB, Mandatory 240FS)
- 12 Cubic Foot, 4 Door, Side-by-Side Refrigerator (260DS, 310BH)
- Camping Cozy Package (N/A 310BH) (Dual Pane Tinted Windows, Tank Pads, Upper Tank Valves)
- Spare Tire
- Aluminum Rims
- Automatic 4-Point Hydraulic Leveling Jacks (N/A 310BH)
- Firestone Ride-Rite Rear Air Bags (Mandatory 240FS, 260DS, 317SA, 319MD, 310BH)
- Molded Fiberglass Front Cap w/LED Accent Lighting
- Automotive Full Body Paint Exterior (Molded Fiberglass Front Cap is Mandatory)
- Tan Painted Chassis Cab - Color Matched to Carmel Exterior Fiberglass
- Canadian Z240 RV Conversion Compliance (Ford Chassis Only)
- Canadian Chassis Compliance - Speedo & Lights (Ford Chassis Only)
- Canadian CD-MVSA (Mandatory For Canadian Dealers)

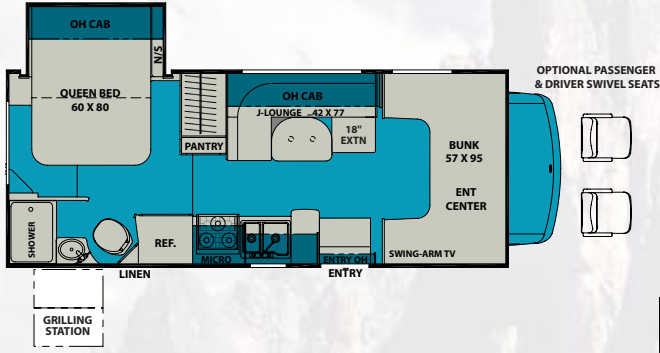
### LEPRECHAUN LUXURY PACKAGE

- Leatherette Cockpit Seats
- Upgrade Serta Mattress (220QB, 317SA, 319MB, 310BH)
- Upgrade Folding Mattress (210RS, 240FS, 260DS)
- Heated, Remote Exterior Mirrors
- Wood Grain Dash
- Cabover & Bedroom Fantastic Power Fan
- Convection Microwave
- Heated Holding Tanks
- Atwood 6 Gallon Gas/Electric DSI Water Heater
- Side View Cameras
- "Easy Access" Dual Auxiliary Battery in Step-well

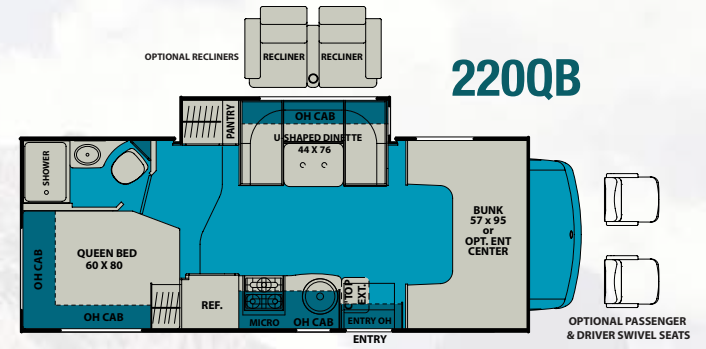
*Standards and Options subject to change without notice.*

# LEPRECHAUN FLOOR PLANS AND SPECIFICATIONS

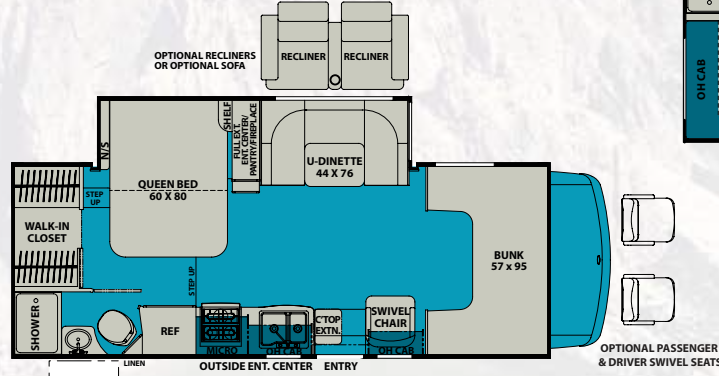
## 210RS



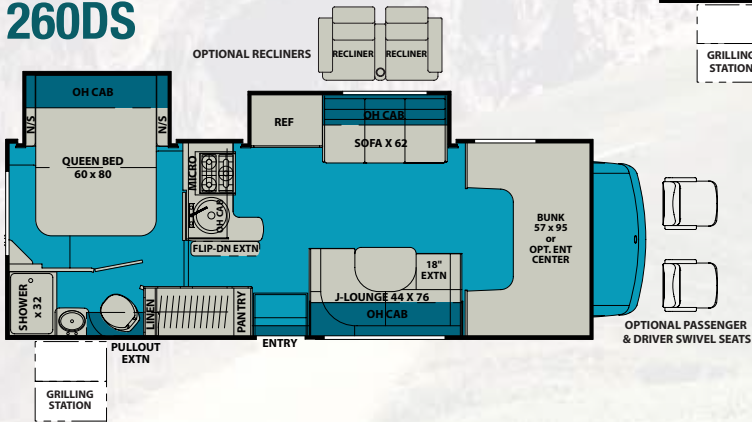
## 220QB



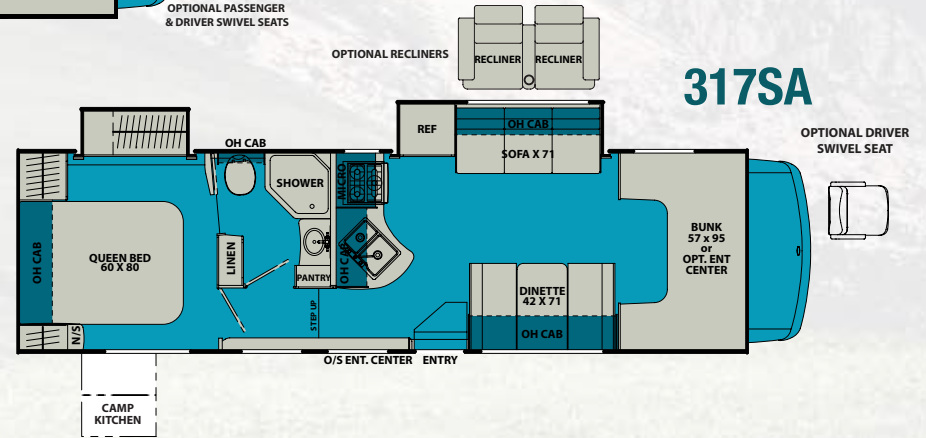
## 240FS



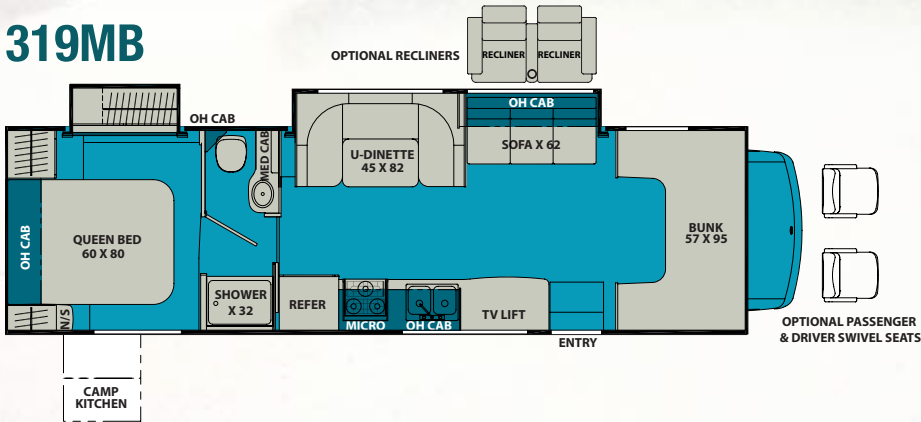
## 260DS



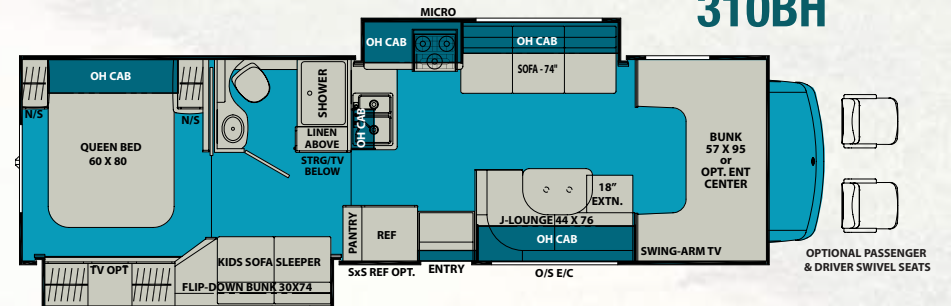
## 317SA



## 319MB

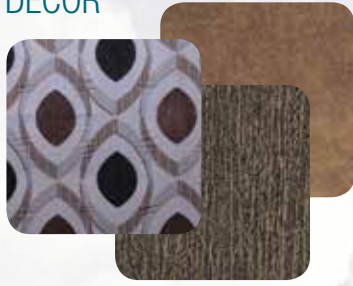


## 310BH



# LEPRECHAUN STANDARD AND OPTIONAL FEATURES

## DÉCOR



COGNAC



SUNSET



BROWNSTONE



COCOA ASH

## SPECIFICATIONS

MODEL	210RS	220QB	240FS	260DS	317SA	319MB	310BH
CHASSIS	4500-CHEVY / 350-FORD	4500-CHEVY / 350-FORD	4500-CHEVY / 450-FORD	4500-CHEVY / 450-FORD	450-FORD	450-FORD	450-FORD
ENGINE	V8-6.0L / V10-6.8L	V8-6.0L / V10-6.8L	V8-6.0L / V10-6.8L	V8-6.0L / V10-6.8L	V10-6.8L	V10-6.8L	V10-6.8L
HORSE POWER	324 / 305	324 / 305	324 / 305	324 / 305	305	305	305
TORQUE	373 / 420	373 / 420	373 / 420	373 / 420	420	420	420
WHEEL BASE	159" / 158"	169" / 168"	191" / 182"	191" / 190"	223"	223"	223"
GVWR* (LBS.)	14,200 / 12,500	14,200 / 12,500	14,200 / 14,500	14,200 / 14,500	14,500	14,500	14,500
GCWR* (LBS.)	20,000 / 18,500	20,000 / 18,500	20,000 / 22,000	20,000 / 22,000	22,000	22,000	22,000
UVW* (APPROX. LBS.)	10,046 / 10,310	10,150 / 10,040	TBD / 10,900	11,300 / 11,450	12,250	12,300	12,300
CCC (APPROX. LBS.)	4,030 / 2,190	4,100 / 2,460	TBD / 3,300	2,580 / 2,790	2,280	2,230	2,200
GAWR FRONT (LBS.)	4,600 / 4,600	4,600 / 4,600	4,600 / 5,000	4,600 / 5,000	5,000	5,000	5,000
GAWR REAR (LBS.)	9,600 / 8,500	9,600 / 8,500	9,600 / 9,600	9,600 / 9,600	9,600	9,600	9,600
INTERIOR HEIGHT	6' 11"	6' 11"	6' 11"	6' 11"	6' 11"	6' 11"	6' 11"
EXTERIOR WIDTH	8' 6"	8' 6"	8' 6"	8' 6"	8' 6"	8' 6"	8' 6"
EXTERIOR HEIGHT (W/ A/C)	10' 11"	10' 11"	10' 11"	10' 11"	10' 11"	10' 11"	10' 11"
EXTERIOR LENGTH (W/ HITCH)	24' 9" / 24' 3"	25' 4" / 24' 10"	26' 9" / 26' 3"	27' 11" / 27' 5"	32' 11"	32' 11"	32' 11"
HITCH WEIGHT (LBS.)	5,000	5,000	5,000 / 7,500	5,000 / 7,500	7,500	7,500	7,500
FUEL CAPACITY (GAL.)	57 / 55	57 / 55	57 / 55	57 / 55	55	55	55
LP CAPACITY (LBS.)	68	68	68	68	68	68	68
FRESH WATER CAPACITY (GAL.)	50	50	50	50	50	50	50
WATER HEATER CAPACITY (GAL.)	6	6	6	6	6	6	6
GREY TANK CAPACITY (GAL.)	28	28	28	31	32	32	34
BLACK TANK CAPACITY (GAL.)	31	22	31	31	29	29	29
EXTERIOR STORAGE (CU. FT.)	67	92	55	60	109	100	83
AWNING LENGTH (FT.)	15'	16'	17'	18'	21'	21'	11'



**GVWR (Gross Vehicle Weight Rating)** is the maximum permissible weight of the unit when fully loaded. It includes all weights, inclusive of all fluids, occupants, cargo, optional equipment and accessories. For safety and product performance do NOT exceed the GVWR.

**GCWR (Gross Combined Weight Rating)** is the maximum permissible loaded weight of your motor home and any towed trailer or towed vehicle. Actual GCWR of this vehicle may be limited by the sum of the GVWR and the installed hitch receiver maximum capacity rating; see hitch rating label for detail.

**GAWR (Gross Axle Weight Rating)** is the maximum permissible weight, including cargo, fluids, optional equipment and accessories that can be safely supported by each axle.

**UVW (Unloaded Vehicle Weight)** \* is the typical weight of the unit as manufactured at the factory. It includes all weight at the unit's axle(s), including full fuel, all fluids and LP Gas. The UVW does not include cargo, fresh potable water, additional optional equipment or dealer installed accessories.

\*Estimated Average based on standard build optional equipment.

**CCC (Cargo Carrying Capacity)** \*\* is the amount of weight available for fresh potable water, cargo, passengers, additional optional equipment and accessories. CCC is equal to GVWR minus UVW. Available CCC should accommodate fresh potable water (8.3 lbs per gallon). Before filling the fresh water tank, empty the black and gray tanks to provide for more cargo capacity.

\*\* Estimated average based on standard build optional equipment

Each Coachmen motorhome is weighed at the manufacturing facility prior to shipping. A label identifying the unloaded vehicle weight of the actual unit and the cargo carrying capacity is applied to every Coachmen motorhome prior to leaving our facilities.

The load capacity of your unit is designated by weight, not by volume, so you cannot necessarily use all available space when loading your unit.

Actual towing capacity is dependent upon your particular loading and towing circumstances, which includes the GVWR, GAWR and GCWR as well as adequate trailer brakes. Please refer to the Operator's Manual of your vehicle for further towing information.

# LEPRECHAUN EXTERIOR FEATURES



**Color-infused Camel Fiberglass (Standard)**



**Coffee Full Body Paint (optional)**



**Merlot Full Body Paint (optional)**



## Travel Easy™ Roadside Assistance

RVing is easier with Coachmen's Travel Easy™ Roadside Assistance provided FREE the first year of ownership to those who purchase a New Coachmen RV. Administered by Coach-Net, this service provides you with 24/7 operational, technical and emergency road service coverage. Also included is towing, fuel delivery, jump starts, lockout service, tire changes, mobile mechanic and unlimited technical assistance. Anywhere. Anytime. Travel Easy™ is the security of knowing that help is an easy phone call away.



## Free One Year Membership – Coachmen Owners' Association

Coachmen is proud to sponsor the largest manufacturer sponsored camping club in North America ... Coachmen Owners' Association (COA). COA provides a broad breadth of value propositions for our owners including: planned trips/ tours and rallies at bulk rate discounts, free trip routing, free campground directory, free Easy RVing magazine, theme park discounts, fuel discounts, mail forwarding, a dedicated COA web site, local and state club activities and Caravan Chapter membership opportunities. Most importantly, COA enhances the Coachmen ownership and RV lifestyle experience.

*Every new Coachmen RV buyer is eligible for a 1 Year FREE membership in the Coachmen Owners' Association. It all adds up to an easy ownership experience!*



## Coachmen RV Owner "Digital Kit" App

Now you can have your Owners Manual with you wherever you are. Download our free App from iTunes and you'll have the information at your fingertips.



**Forest River, Inc. encourages our customers to purchase their Forest River products from a local dealership whenever possible for the following reasons:**

- 1) Forest River, Inc. dealers are independently owned and operated businesses so priority service and scheduling is at their discretion and is often provided to customers that purchased their unit at that dealership.
- 2) Purchasing locally allows customers to establish meaningful relationships with a dealer, enhancing the RV experience through assistance with product questions, user tips or RV regulations for your state or country, and much more!
- 3) Canadian customers must meet requirements to bring an RV purchased out of the country to their home. These requirements may involve additional inspections and certifications, taxes and fees. Your local Canadian Dealer is a professional at meeting these requirements.
- 4) Scheduling timely warranty repairs and adjustments through a local dealership provides far greater flexibility and convenience to you, the customer!

It is the goal of Forest River, Inc. that all of our RV owners fully enjoy the RV experience and that customer satisfaction meets or exceeds their expectations!



**Learn More**  
Scan this barcode using a QR Reader on your smart phone to learn more about Forest River.



A Berkshire Hathaway company.

All information contained in this brochure is believed to be accurate at the time of publication. However, during the model year, it may be necessary to make revisions and Coachmen reserves the right to make all such changes without notice, including prices, colors, materials, equipment and specifications as well as the addition of new models and the discontinuance of models shown in this brochure. Therefore, please consult with your Coachmen dealer and confirm the existence of any materials, design or specifications that are material to your purchase decision. 2/16

©Copyright 2016 Coachmen RV a Division of Forest River Inc – All Rights Reserved.

## Your LEPRECHAUN Dealer



423 N. Main Street • P.O. Box 30  
Middlebury, IN 46540

To learn more about Coachmen RV and our products and see how Coachmen is making the easy life easier, call us toll free at **(800) 353-7383**, or visit **www.coachmenrv.com**