

phaeton



TIFFIN MOTORHOMES
WHEREVER YOU GO, WE GO.



COVER

2013 PHAETON WITH MAROON CORAL EXTERIOR

LIVING AREA

40 QBH FLOOR PLAN WITH OPTIONAL ENTERTAINMENT CENTER/MYSTERE FABRIC SUITE WITH ENGLISH CHESTNUT CABINETS



COCKPIT



DINETTE



KITCHEN



HOW MUCH DO PEOPLE LOVE THE PHAETON? Let us count the ways. Not only is it Tiffin's best-selling model, the Phaeton is also America's favorite Class A diesel motor home, ranking as the No. 1 seller for the past six years. For 2013, this model is better than ever, updated with options and modifications suggested by the most discerning motor home critics we know—Tiffin owners. From the additional 110-volt plugs, to an ice and water dispenser in the door of the residential refrigerator, these little touches will make a big difference in comfort on the road. The living is easy in the spacious living area, too, with both driver and passenger seats that turn to face guests on the two sofas. As for storage, opt for a tankless water heater and gain an entire basement compartment. What's more, you'll be pleased at how affordable the luxurious 2013 Phaeton is—and who doesn't love that?



TV/CHEST OF DRAWERS



MASTER BEDROOM



WARDROBE/LAV

INTERIOR DÉCOR

With upscale finishings and intricate design details, Tiffin Motorhomes sets the standard for interior luxury in the RV industry, providing a beautiful backdrop to personalize to your taste. For the 2013 Phaeton, you have three exclusive interior fabric suites to choose from. All are designed to complement the hardwood cabinetry built by hand by our Red Bay craftsmen, as well as your personal decorative touches. This model also features a new valance design for a more stylish, up-to-date décor.

CABINETS



MEDIUM ALDERWOOD



ENGLISH CHESTNUT

COUNTERTOP & FLOORING



COUNTERTOP

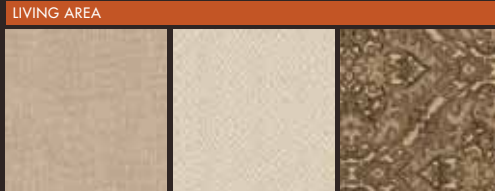


CARPET



TILE

CAPRI FABRIC SUITE

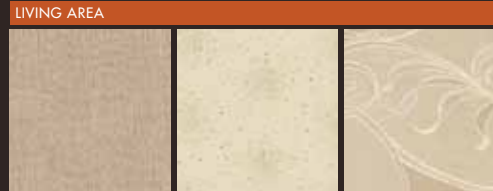


SOFA

ACCENT

DINETTE

GLITTER FABRIC SUITE



SOFA

ACCENT

DINETTE

MYSTERE FABRIC SUITE



SOFA

ACCENT

DINETTE



MAIN

ACCENT



MAIN

ACCENT



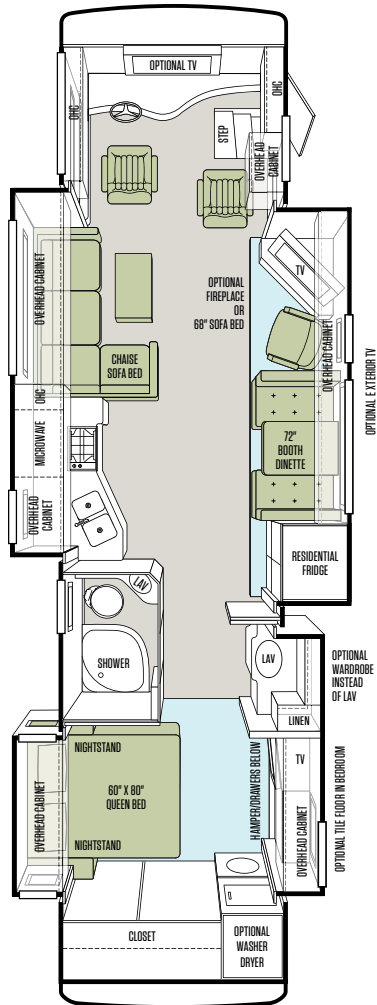
MAIN

ACCENT

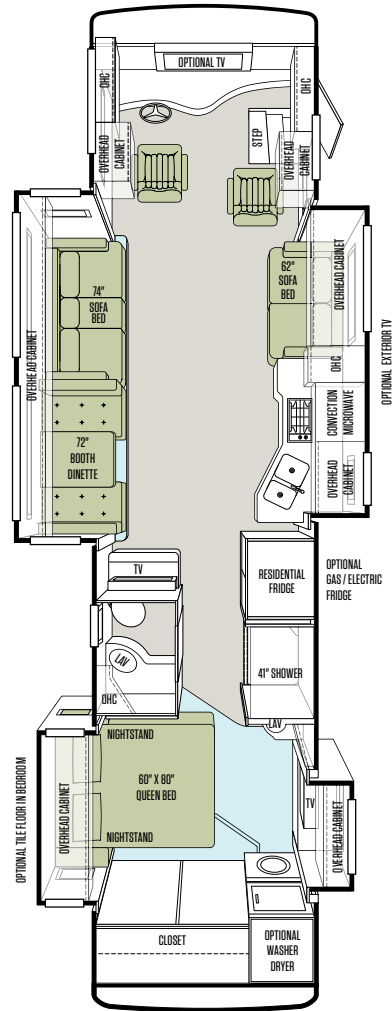
Phaeton cabinet doors & fascias are made of solid wood, & all cabinet finishes are available in combination with any fabric suite. All options may not be available in every model. Because of progressive improvements, specifications, standard & optional equipment are subject to change without notice or obligation. For a complete & up-to-date list of available options & specifications, visit tiffinmotorhomes.com

FLOOR PLANS

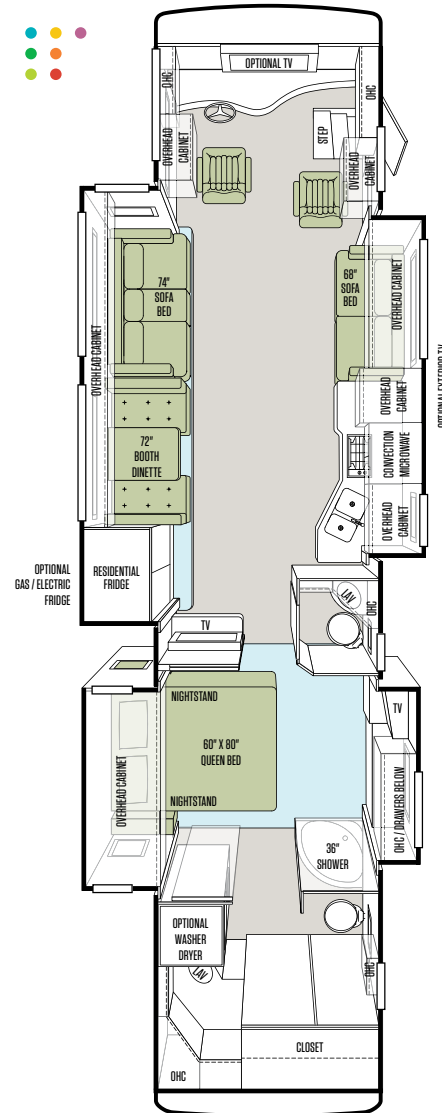
36 GH



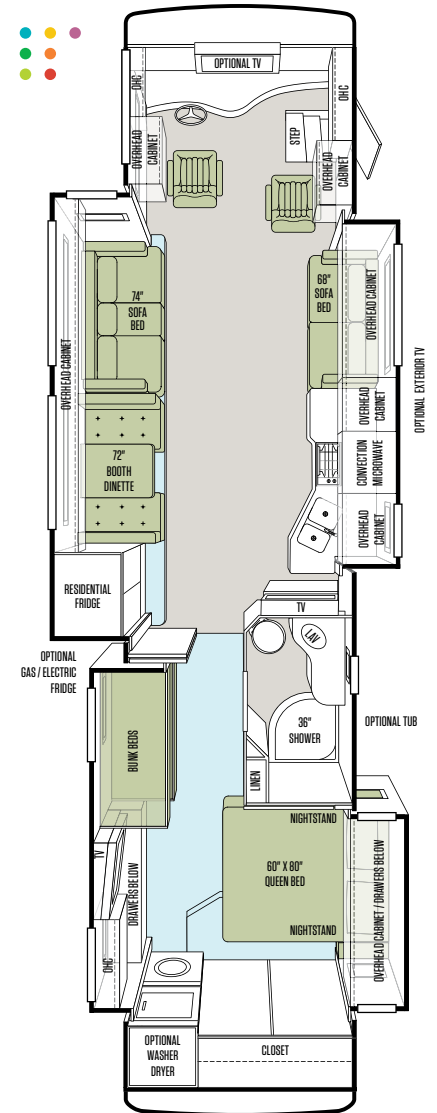
36 QSH



40 QBH

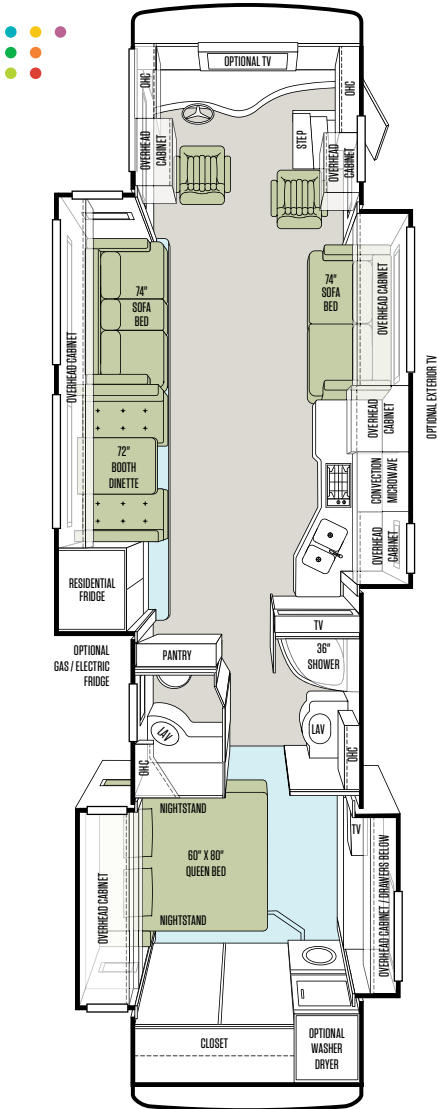


40 QKH

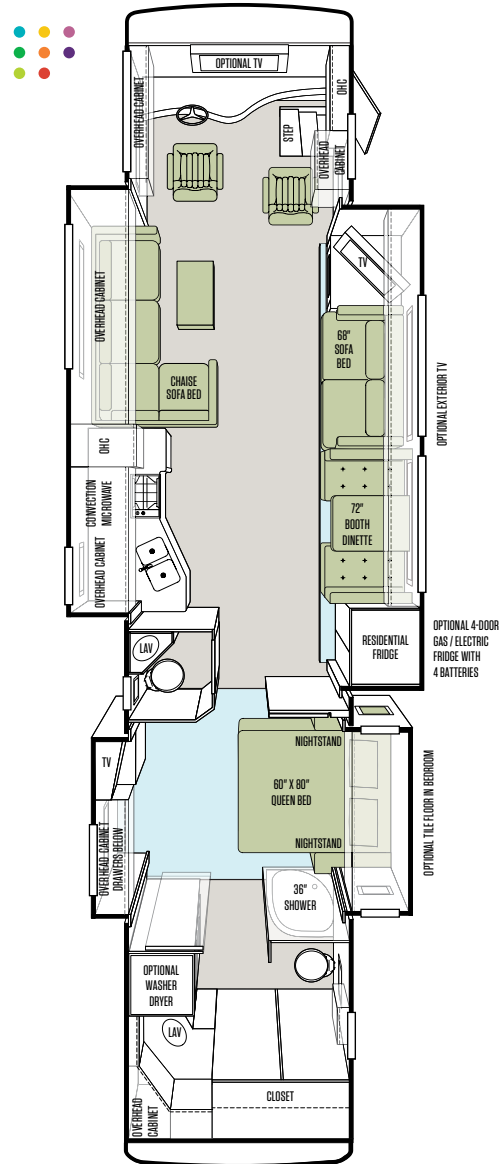


*All options may not be available in every model. Because of progressive improvements, specifications, standard & optional equipment are subject to change without notice or obligation.

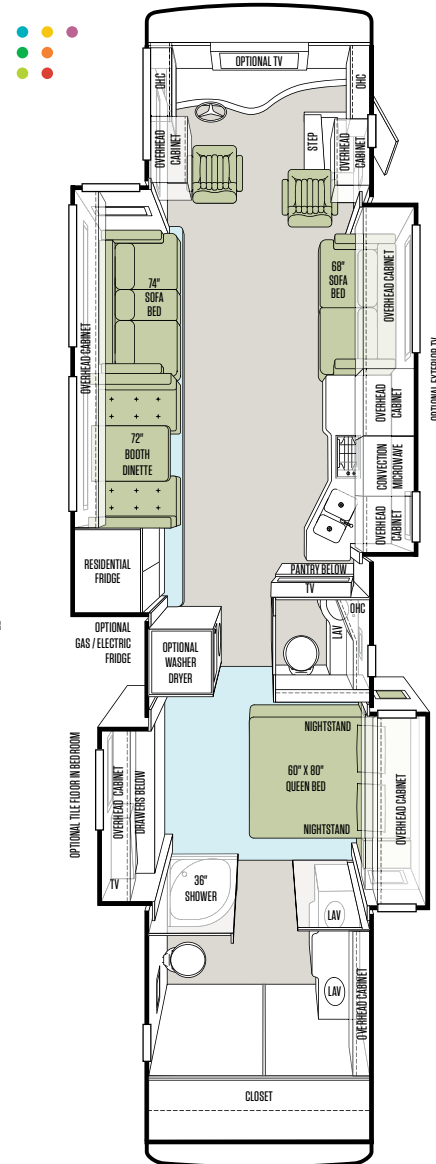
40 QTH




42 LH

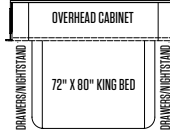


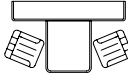
42 QBH

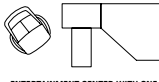


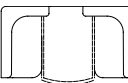
AVAILABLE OPTIONS*


- 


FREESTANDING DINETTE WITH COMPUTER WORKSTATION
- 


OVERHEAD CABINET
- 

FREESTANDING CABINET/DINETTE
- 

ENTERTAINMENT CENTER WITH ONE LEATHER LIFT RECLINER & FLIP TABLE
- 

U-SHAPED BOOTH DINETTE
- 

LEATHER LIFT RECLINERS
- 

FIREPLACE BELOW TV IN ENTERTAINMENT CENTER
- 

ENTERTAINMENT CENTER WITH TWO LEATHER LIFT RECLINERS



SPECIFICATIONS

AUTOMOTIVE

STANDARD ON ALL MODELS:

- Raised Rail Chassis Frame
- Air Ride (4 Air Bags)
- Aluminum Wheels
- Exhaust Brake (36' & 40')
- Compression Brake (42')
- Adjustable Accelerator & Brake Pedals
- Allison 3000 MH 6-speed Automatic Transmission
- Air Brakes with Automatic Slack Adjusters & ABS
- 55" Wheel Cut
- Fog Lights
- Daytime Running Lights
- 18" VIP Steering Wheel
- Cruise Control
- Emergency Start Switch

CHASSIS OPTIONS

FREIGHTLINER® CHASSIS:	36 GH	36 QSH	40 QBH	40 QKH	40 QTH	42 LH	42 QBH
Freightliner Cummins ISC 380 HP/1050 Lb. Torque	S	S	S	S	S	NA	NA
Freightliner Cummins ISL 400 HP/1250 Lb. Torque	NA	NA	NA	NA	NA	S	S
GVWR	35,320 Lb.	35,320 Lb.	35,320 Lb.	35,320 Lb.	35,320 Lb.	44,320 Lb.	44,320 Lb.
GAWR – Front	14,320 Lb.	14,320 Lb.	14,320 Lb.	14,320 Lb.	14,320 Lb.	14,320 Lb.	14,320 Lb.
GAWR – Rear	21,000 Lb.	21,000 Lb.	21,000 Lb.	21,000 Lb.	21,000 Lb.	20,000 Lb.	20,000 Lb.
GAWR – Tag Axle	NA	NA	NA	NA	NA	10,000 Lb.	10,000 Lb.
GCWR	45,320 Lb.	45,320 Lb.	45,320 Lb.	45,320 Lb.	45,320 Lb.	54,320 Lb.	54,320 Lb.
Alternator Amps	160	160	160	160	160	160	160
Trailer Hitch Capacity	10,000 Lb.	10,000 Lb.	10,000 Lb.	10,000 Lb.	10,000 Lb.	10,000 Lb.	10,000 Lb.
Fuel Tank (Gallons) – Dual Fuel Fill	100	100	100	100	100	100	100
DEF Tank* (Gallons)	13	13	13	13	13	13	13

WEIGHTS & MEASURES

OVERALL:	36 GH	36 QSH	40 QBH	40 QKH	40 QTH	42 LH	42 QBH
Overall Length (Approximate)	36' 9"	36' 9"	40' 5"	40' 5"	40' 5"	42' 6"	42' 6"
Overall Height with Roof Air (Maximum)	12' 7"	12' 7"	12' 7"	12' 7"	12' 7"	12' 7"	12' 7"
Interior Height	84"	84"	84"	84"	84"	84"	84"
Overall Width	101"	101"	101"	101"	101"	101"	101"
Interior Width	96"	96"	96"	96"	96"	96"	96"
Fresh Water (Gallons)	90	90	90	90	90	90	90
Black Water (Gallons)	50	50	50	50	50	50	50
Grey Water (Gallons)	66	66	66	66	66	66	66
LPG Tank (Gallons; can only be filled to 80% capacity)	35.7	35.7	35.7	35.7	35.7	35.7	35.7
Basement Storage (Cubic Feet – Approximate)	111	111	157	157	157	152	152
Wheel Base	228"	228"	266"	266"	266"	272"	272"
Tire Size	275/80R22.5	275/80R22.5	275/80R22.5	275/80R22.5	275/80R22.5	275/80R22.5	275/80R22.5
Minimum Garage Height	13'	13'	13'	13'	13'	13'	13'

*Diesel Exhaust Fluid (DEF) is the active component used in Selective Catalytic Reduction (SCR) engines to reduce nitrogen oxide emissions by 90% to meet EPA standards.

SPECIFICATIONS

GENERAL EXTERIOR

STANDARD ON ALL MODELS:

- Hydraulic Automatic Leveling Jacks
- Large Tinted One-piece Windshield
- Heated Power Mirrors with Integrated Cameras
- Single Motor Intermittent Wiper
- Lockable Swing-out Storage Doors with Gas Shocks
- Window Awning Package (2 Windows)
- BASF Full-body Paint with Protective Film on Front Cap
- Remote Locking System for Entry Door
- Heated Water & Holding Tank Compartments
- Deadbolt Front Entrance Door
- Double Electric Step
- Dual Pane Windows
- Exterior Patio Light
- Automatic Door Awning
- Automatic Patio Awning
- Lighted Exterior Storage
- Roof Ladder
- Fiberglass Front & Rear Caps
- Docking Lights
- Six 6 V Auxiliary Batteries
- Park Telephone Ready
- Black Tank Flush System
- Water Filter
- Custom Mud Flap
- Undercoating
- Dual Fuel Fills
- 110 V Exterior Receptacle
- Digital TV Antenna
- Power Fantastic® Roof Vent with 3-speed Fan
- Back-up Camera
- Cable Ready TV
- Gravity Water Fill
- 2000 Watt Sine Wave Inverter with 100 Amp Converter & Transfer Switching
- Pre-wired for In-motion or Automatic Satellite Dish*

AVAILABLE OPTIONS:	36 GH	36 QSH	40 QBH	40 QKH	40 QTH	42 LH	42 QBH
Spotlight	O	O	O	O	O	O	O
One Storage Compartment Slide-out Tray	O	O	O	O	O	O	O
Two Storage Compartment Slide-out Trays	NA	NA	O	O	O	O	O
Air Horns	O	O	O	O	O	O	O
In-motion Satellite Dish*	O	O	O	O	O	O	O
Automatic Satellite Dish*	O	O	O	O	O	O	O
Pre-wired for Winegard Trav'ler Satellite	O	O	O	O	O	O	O
Exterior TV	O	O	O	O	O	O	O
8.0 kw Onan® Manual Slide-out Generator	S	S	S	S	S	NA	NA
10.0 kw Onan® Manual Slide-out Generator	NA	NA	NA	NA	NA	S	S
Two Low Profile Roof ACs with Heat Pumps	S	S	S	S	S	NA	NA
Three Low Profile Roof ACs with Heat Pumps & 10.0 kw Onan® Generator	NA	NA	O	O	O	S	S

GENERAL INTERIOR

STANDARD ON ALL MODELS:

- 7' Ceilings
- Soft Touch Vinyl Ceiling with Trey Ceiling in Living Area
- Porcelain Tile Floor in Kitchen, Living Area, Bath & Entry Landing
- Carpeting with Scotchgard® in Bedroom & Driver Compartment
- High Gloss Raised Panel Hardwood Cabinet Doors
- Two Ducted Furnaces
- Solid Wood Cabinet Fascias & Doors with Concealed Hinges
- Complete Cable Wiring Interfacing with Surround Sound & Satellite Receiver
- Home Theater Sound System with Concealed Speakers
- Solar/Privacy RollEase® Shades
- LED Bulbs in Ceiling Lights Only
- Fantastic® Power Roof Vents with 3-speed Fans
- Tank Level Monitor System
- Smoke Detector
- Electric Step Well Cover
- Wardrobe with Automatic Light
- 12 V Disconnect Switch

AVAILABLE OPTIONS ON ALL MODELS:

Medium Alderwood Solid Cabinet Doors & Drawer Fronts	Combo Washer/Dryer	Central Vacuum Cleaner
English Chestnut Solid Cabinet Doors & Drawer Fronts	Stacked Washer/Dryer	

COCKPIT

STANDARD ON ALL MODELS:

- Power Ultra Leather Driver & Passenger Seats with Passenger Footrest
- Contemporary Wraparound Dash
- Courtesy Drawer in Step Well
- Courtesy Light in Step Well
- Dual Dash Fans
- Two Drawers in Dash
- Dual 12 V Dash Receptacle
- Single CD Player & AM/FM Stereo
- Fire Extinguisher
- Computer Slide-out Tray with Lock-out Rails on Passenger Side
- Power Solar/Privacy Windshield Shade
- Driver/Passenger Side Window Solar/Privacy Shades
- Adjustable Seatbelt Brackets
- Color Rear Vision Monitor System with Side-view Cameras Activated by Turn Signals
- Custom Infrared Repeater System

AVAILABLE OPTIONS ON ALL MODELS:

Satellite-ready Radio (Requires Subscription)	Front Overhead TV	In-dash Stereo/Navigational System
---	-------------------	------------------------------------

*High-definition programming is not available on a domed satellite antenna unless you subscribe to DISH Network®.



LIVING AREA/COCKPIT

40 QBH FLOOR PLAN WITH OPTIONAL ENTERTAINMENT CENTER/MYSTERE FABRIC SUITE WITH ENGLISH CHESTNUT CABINETS



OPTIONAL ENTERTAINMENT CENTER*
INCLUDES PANTRY REPLACING MIDSECTION TV



PANTRY REPLACING MIDSECTION TV*



EXPAND-AN-ISLAND



SOFA/SLEEPER

SPECIFICATIONS

LIVING AREA/DINETTE

STANDARD ON ALL MODELS:

- Booth Dinette with Laminate Tabletop & Solid Surface Edging

AVAILABLE OPTIONS:	36 GH	36 GSH	40 QBH	40 QKH	40 QTH	42 LH	42 QBH
Freestanding Dinette with Computer Workstation	O	O	O	O	O	O	O
Freestanding Dinette with Built-in Cabinets	O	O	O	O	O	O	O
Ultra Leather U-shaped Booth Dinette	O	O	O	O	O	O	O
Cloth U-shaped Booth Dinette	O	O	O	O	O	O	O
Midsection TV in Entertainment Center	NA	S	S	S	S	NA	S
Cloth DE Sofa/Sleeper on Passenger Side	NA	O	O	O	O	O	O
Ultra Leather DE Sofa/Sleeper on Passenger Side	NA	S	S	S	S	S	S
Cloth L-shaped Chaise Sofa/Sleeper on Passenger Side	NA	NA	O	O	O	NA	O
Ultra Leather L-shaped Chaise Sofa/Sleeper on Passenger Side	NA	NA	O	O	O	NA	O
Ultra Leather Air Coil Hide-A-Bed Sofa/Sleeper on Passenger Side**	O	NA	O	O	O	NA	O
Cloth Air Coil Hide-A-Bed Sofa/Sleeper on Passenger Side**	O	NA	O	O	O	NA	O
Cloth Magic Bed on Passenger Side	NA	NA	NA	NA	NA	O	NA
Ultra Leather Magic Bed on Passenger Side	NA	NA	NA	NA	NA	O	NA
Two Leather Lift Recliners on Passenger Side***	O	NA	NA	NA	NA	O	NA
Entertainment Center with One Leather Lift Recliner on Passenger Side	S	NA	NA	NA	NA	O	NA
Cloth DE Sofa/Sleeper on Driver Side	NA	S	S	S	S	NA	S
Ultra Leather DE Sofa/Sleeper on Driver Side	NA	O	O	O	O	NA	O
Cloth Air Coil Hide-A-Bed Sofa/Sleeper on Driver Side**	O	O	O	O	O	NA	O
Ultra Leather Air Coil Hide-A-Bed Sofa/Sleeper on Driver Side**	O	O	O	O	O	NA	O
Cloth L-shaped Chaise Sofa/Sleeper on Driver Side	S	NA	NA	NA	NA	S	NA
Ultra Leather L-shaped Chaise Sofa/Sleeper on Driver Side	O	NA	NA	NA	NA	O	NA
Cloth Magic Bed on Driver Side	NA	O	O	O	O	NA	O
Ultra Leather Magic Bed on Driver Side	NA	O	O	O	O	NA	O
Two Leather Lift Recliners on Driver Side	NA	NA	O	O	O	NA	O
Entertainment Center with One Leather Lift Recliner & Flip Table on Driver Side (Deletes Midsection TV)*	NA	NA	O	O	O	NA	O
Fireplace Below Living Room TV	O	NA	O	O	O	O	O

* When Optional Entertainment Center is chosen, Pantry replaces Midsection TV. Fireplace below Living Room TV is also Optional only with this configuration.

** Air Coil Option not available on both Passenger & Driver Side. For 36 GH Air Coil Option on Passenger Side only available with Front Overhead TV.

*** For 36 GH Leather Lift Recliners only available with Front Overhead TV.

SPECIFICATIONS

KITCHEN

STANDARD ON ALL MODELS:

- Solid Surface Countertop with Stainless Steel Sink
- Solid Surface Sink Cover
- Expand-an-island
- Permanent Mounted Folding Solid Surface Cooktop Cover
- Sink Cover Storage Racks Underneath Sink
- Single Lever Sink Faucet with Sprayer
- Stainless Steel Microwave/Convection Oven
- Galley Splash Guards
- Stainless Steel Residential Refrigerator with Ice & Water Dispenser in Door
- 3-burner Cooktop
- Built-in Soap Dispenser
- Built-in Waste Can (Not Available with Dishwasher)

AVAILABLE OPTIONS ON ALL MODELS:

4-door Gas/Electric Fridge with 4 Batteries

Gas Oven

Dishwasher (Deletes Built-in Waste Can)

BATH

STANDARD ON ALL MODELS:

- Medicine Cabinet with Vanity Lights
- Skylight in Shower with Sliding Cover
- Solid Surface Vanity Top & Bowl
- Custom Flat Panel Bath Door
- One-piece Fiberglass Shower Surround
- 10-Gallon DSI Gas/Electric Water Heater
- Glass Shower Door
- 3-speed Fantastic® Fan
- Hand-held Shower Head with On/Off Switch
- Spray Cleaner on Toilet

AVAILABLE OPTIONS:	36 GH	36 QSH	40 QBH	40 QKH	40 QTH	42 LH	42 QBH
41" Molded Fiberglass Shower	S	S	NA	NA	NA	NA	NA
36" Molded Fiberglass Shower with Radius Door	NA	NA	S	S	S	S	S
Tub (in Place of Shower)	NA	NA	NA	O	NA	NA	NA
Tankless Gas Water Heater	O	O	O	O	O	O	O

BEDROOM

STANDARD ON ALL MODELS:

- Bed Comforter with Throw Pillows
- Pre-wired for DVD & Satellite Receiver
- Under Bed Storage
- Pillow Top Mattress
- Ceiling Fan
- TV
- Carbon Monoxide Detector
- Wood/Fabric Headboard
- LPG Leak Detector
- Chest of Drawers with Laundry Hamper
- Wall-to-wall Carpet

AVAILABLE OPTIONS:	36 GH	36 QSH	40 QBH	40 QKH	40 QTH	42 LH	42 QBH
Bunk Beds with Bunk Ladder/Convertible Wardrobe	NA	NA	NA	S	NA	NA	NA
DVD Monitors in Bunk Beds	NA	NA	NA	O	NA	NA	NA
King Bed Mattress (72" x 80")	NA	NA	O	O	O	O	O
SovaQuest Digital Sleep Air Mattress™ – Queen (60" x 80")	O	O	O	O	O	O	O
SovaQuest Digital Sleep Air Mattress™ – King (72" x 80")	NA	NA	O	O	O	O	O
Memory Foam Queen Mattress (60" x 80")	O	O	O	O	O	O	O
Memory Foam King Mattress (72" x 80")	NA	NA	O	O	O	O	O
Tile Flooring in Bedroom	O	O	NA	NA	NA	O	O
Wardrobe (in Place of Lavatory on Passenger Side)	O	NA	NA	NA	NA	NA	NA





EXTERIOR

2013 PHAETON WITH MAROON CORAL EXTERIOR

EXTERIOR DÉCOR

FULL-BODY PAINT SCHEMES



GOLD CORAL



RUSTIC CANYON



MAROON CORAL



SILVER SAND



ROCKY MOUNTAIN BROWN



SUNLIT SAND

WHY BUY A TIFFIN MOTORHOME?

No one invests more time and effort into the construction and engineering of motor homes than we do at Tiffin. To ensure superior quality, we design and make many parts ourselves, such as our roof cap, one piece of moisture-resistant molded fiberglass that prevents water intrusion and seamlessly seals a 5½" layer of formed insulation. Outside wall panels are gel-coated fiberglass over high performance thermal insulation. Underfoot, the porcelain tile floor is bonded to high-impact oriented strand board, which is secured atop thermal insulation and a woven moisture barrier material. Underneath it all, every model is built on an innerframe of durable, tubular aluminum. As a new coach comes off the line, we think the result speaks for itself: There isn't a more comfortable, better-built motor home on the road today.

10-YEAR LIMITED FRAME WARRANTY

We warranty the frame of the walls, floors, and roof for 10 years.

5-YEAR LIMITED SIDEWALL BOND WARRANTY

We warranty the sidewall against delamination between the outside fiberglass and the innerframe for 5 years.

GO TO TIFFINMOTORHOMES.COM

Visit us on the web for more information on the 2013 Phaeton and all 2013 Tiffin Motorhomes, along with the latest product and specification updates. Plus, watch videos and see other exclusive web content. You can also join us on Facebook and Twitter.

FOR PARTS & SERVICE CALL 256/356.0261

  [FACEBOOK.COM/TIFFINMOTORHOMES](https://www.facebook.com/tiffinmotorhomes) [TWITTER.COM/TIFFINMOTORHOME](https://twitter.com/tiffinmotorhome)

YOUR LOCAL TIFFIN DEALER:



Over the years, my family and I have had the pleasure of meeting many of our wonderful Tiffin customers. They're truly among the nicest folks in the world. So, if you're thinking about buying a Tiffin, don't be shy about asking our owners to tell you about their experiences. After all, no one knows our coaches better than the people who drive them. Of course, we'd love the chance to chat with you, too, so give us a call, visit our website, or just stop by the office if you're ever in Red Bay.

Safe travels!



TIFFIN MOTORHOMES

WHEREVER YOU GO, WE GO.

105 2ND STREET NW, RED BAY, ALABAMA 35582

CALL 256/356.8661 FAX 256/356.8219

SOME INTERIOR FURNISHINGS NOT INCLUDED. UNLESS WHERE NOTED, ALL CONTENT ©2013 TIFFIN MOTORHOMES, INC. ALLEGRO®, ALLEGRO BREEZE®, ALLEGRO RED®, PHAETON®, ALLEGRO BUS®, ZEPHYR®, ROUGHING IT SMOOTHLY®, OPEN ROAD®, POWERGLIDE®, AND PUSHER® ARE REGISTERED TRADEMARKS OF TIFFIN MOTORHOMES, INC. ALL RIGHTS RESERVED.

phaeton

