

2004 Horizon.



MAKE A STATEMENT

# TOP OF THE LINE

Winnebago Industries® is proud to present the all-new 2004 Itasca Horizon. It's the first coach built on the new Evolution Chassis™, a Winnebago Industries exclusive. Winnebago Industries worked closely with Freightliner® Custom Chassis to create the revolutionary design of the Evolution Chassis which incorporates high-volume exterior storage as well as impressive ride and handling.

The Horizon makes its mark with exquisite features such as: full-body paint, a Sony® flat-screen TV, solid-surface countertops, solid-wood cabinet doors and ceramic tile floor-covering. Five distinct floorplans, each loaded with amenities and user-friendly storage, make the Itasca Horizon a one-of-a-kind motor home experience.



40AD Fernblock with Concert Cherry

**STOREMORE**

▲ True luxury is in the details, and you'll appreciate the attention to detail in the Horizon. Cabinet doors and facings are made from solid wood. The hand-crafted Stitchcraft furniture is available in UltraLeather HP™ for comfort and style. All models are highlighted with wainscoting in the lounge and dining area, while the 40AD offers generous storage in an elegant residential buffet. The Horizon maintains the comfort level of your choosing with floor-ducted heating, ceiling-ducted TrueAir® Residential Central Air Conditioning and dual-glazed/thermo-insulated windows. The heat pump even lets you take the chill off cool mornings without using the furnace. Day/night pleated shades provide three levels of light and privacy.

► Comfortable travel starts with a comfortable chair. Covered in soft UltraLeather HP and mounted on powered, 6-way pedestals, the high-back cab seats are perfect for a long day on the road. Both chairs swivel and recline, while the passenger seat has a footrest for extra comfort. At the touch of a button a powered stepwell cover creates a flat floor in front of the passenger seat.



## Interior Decors



Briarwood



Fernblock



Harbor Breeze



Concert Cherry



Portsmouth Oak



Washed Maple

**Horizon**  
2004



▲ You'll feel right at home in the galley, which includes solid-surface countertops, a galley island on the 40KD and 40AD and a 30" residential microwave/convection oven with a cook sensor that automatically selects the power level and cooking time to help you prepare the perfect meal every time. The G.E. Advantium™ Speedcook oven is also available. A stainless steel sink accommodates large pots and pans and includes a Moen® single-control faucet with pull-out sprayer. A separate faucet provides water from an Everpure® filtration system.

## FINE DINING



▲ Residential-style innerspring cushion seats make the available BenchMark™ Full Comfort Dinette our most comfortable dinette ever. The seats flip up for easy access to the large storage space below and quickly convert into a comfortable bed.

▼ The available combination washer/dryer features multiple wash, time and temperature cycles to accommodate most fabrics.



▲ A double-door refrigerator/freezer with icemaker and a convenient pantry come standard. A refrigerator/freezer with icemaker is also available. A standard 2,000 watt inverter/charger lets you make ice as you drive.



▲ The dining table provides spacious dining for two people and expands to accommodate four place settings when entertaining guests.



▲ The hoop-base lounge chair is a comfortable rocker and recliner with footrest. Best of all, it can be moved to your favorite spot when you're not traveling. (NA 40KD)

► Select the available Euro Chair with accompanying ottoman and it will quickly become your favorite place to read or watch a movie. (NA 40KD)





▲ ▲ The Horizon is stacked with the latest in digital entertainment. A 24" Sony flat-screen TV (27" in the 40AD), DVD/VCR combo, amplified antenna and video selection system are all included. The 5-channel QSURROUND™ amplified sound system has been upgraded to include five recessed cube speakers and two sub-woofers. Owners of the 40AD will find everything stored neatly in the stand-alone hardwired entertainment center. The digital In-Motion satellite system, available on all models, lets passengers riding in the living area enjoy uninterrupted television programming. Plus, a 2,000 watt Heart Interface® inverter provides power when a shoreline source is unavailable.



▼ You're in command behind the wheel of a Horizon. Controls are placed strategically for easy operation. These include the electronic transmission touch pad and mirror controls, both located on the driver's trim panel for quick access. The steering wheel has both tilt and telescoping adjustments to conform perfectly to your driving preferences. The dash includes an electronic compass with outdoor thermometer and a Sony color rearview monitor with one-way audio for worry-free backing and maneuvering. Other thoughtful features include power sunvisors, a front privacy curtain and courtesy map lights.



► Itasca owners are raving about the RV Radio®. Bigger buttons, more features and a larger display make it one of our most talked-about innovations. AM/FM stereo, cassette deck and CD player are all included. There's a built-in weatherband to provide updates on travel conditions. Plus, a radio power switch lets you power the RV Radio from either the chassis or coach batteries.



## ARRESTING IN EVERY DETAIL

▼ Collect, analyze and save vehicle data with the available TripTek™ computer. Information displayed on your color rearview monitor includes: distance to destination, time to destination, distance traveled, time

traveled, fuel economy and a handy pre-trip checklist.



▼ The Rest Easy® Multi-Position Lounge provides unmatched flexibility and comfort.



1. It starts as a plush couch with a flip-down center cushion that contains a beverage tray and storage compartment.



2. At the touch of a button, it becomes a relaxing recliner with a pullout ottoman.



3. Touch the button again and it's a contoured 75" x 60" bed. Available upgrades include leather, dual controls, heat and massage.

**SIRIUS** Upgrade your listening choices with Sirius® Satellite Radio programming (requires the satellite-ready radio, available Fall 2003). It offers 100 channels of digital entertainment. High altitude satellites deliver crystal-clear satellite programming anywhere in the U.S. with no signal fades. (Sirius Satellite Radio programming requires a subscription.)



▲ You'll appreciate the roomy design of the bedroom. The bedroom slideout allows for a large wardrobe and a walk-around, queen-size bed. A foldaway cabinet conceals the 19" TV and an Audiovox® rear stereo system with AM/FM stereo radio, CD player and alarm clock can be added for your listening pleasure.



◀ The bedroom includes a Sleep Number® bed by Select Comfort.™ A hand-held remote on each side of the bed lets you quickly and independently adjust the mattress firmness to your ideal level of comfort and support...your Sleep Number, which is The Key to a Perfect Night's Sleep!™

► Discriminating motor coach enthusiasts appreciate elegant touches like ceramic tile floorcovering, a textured glass shower door, a skylight and Corian® solid-surface countertops with a backsplash panel. A single-control flexible showerhead includes a water shutoff valve and Moen® Posi-Temp® control, which regulates a consistent water temperature as you shower. A variable-speed water pump also ensures equal pressure of hot and cold water at all times. The 10-gallon water heater can operate on 110-volt AC or LP gas.



▲ A new 3-way pocket door latch enables the sliding bedroom door to be locked or unlocked from either side of the door and holds it securely in place when opened.



▲ The Horizon is loaded with user-friendly conveniences such as the rechargeable flashlight and hand-held vacuum accessory package.

**TRUEAIR**

► Interior climate control has never been more precise, thanks to TrueAir Residential Central Air Conditioning. It utilizes



the superior cooling technology of a Coleman®-Mach® cooling unit to supply optimum comfort to every part of the coach. Its basement location provides a low vehicle profile and center of gravity. Plus, it reduces interior noise and is easy to service. On cool days, the heat pump provides warmth, minimizing the need to use the LP furnace.

## POWERLINE®

▼ Keep your electrical systems running smoothly, even when operating central air conditioning on 30-amp. shoreline power. The PowerLine® Energy Management System monitors onboard electrical usage to minimize the nuisance of tripped campground circuit breakers. It restricts the operation of postponable electrical loads during periods of heavy usage. As demand is lowered, PowerLine automatically restores power to secondary appliances and systems so you can go about your business without worry.



**ONE PLACE™**  
systems center

► The OnePlace™ Systems Center brings important and frequently used switches into one central location so you can quickly check and operate multiple systems.



# EVOLUTION™ CHASSIS

Experience the Evolution. Winnebago Industries engineers worked closely with Freightliner to create the all-new Evolution Chassis. This exclusive design features one-piece, precision-formed chassis rails that provide increased center section clearance for an impressive amount of basement storage, including pass-through storage, without compromising the integrity of the chassis.



◀ An auxiliary air connection with a detachable 50' hose provides a ready source of compressed air.



▼ The smooth ride of available independent front suspension lets you glide over rough roads with ease. IFS allows each wheel to move independently through its range of motion to provide greater lateral stability and eliminate bump steer. As a result, each tire maintains better contact with the road for a smoother ride. (available in 40' models)

▼ Fuel fills are provided on both the driver and passenger side for convenient filling at any fuel station.

▼ Unlock the storage compartments using the keyless remote or the KeyOne™ System. Pass-through storage lets you carry extra long items and a slideout tray is available for convenient loading and unloading.

▼ A 10,000-lb. capacity hitch lets you haul most cars, boats and trailers. A tow power package includes a 7-way trailer wiring connector to readily accommodate tow vehicles with electrical brakes.

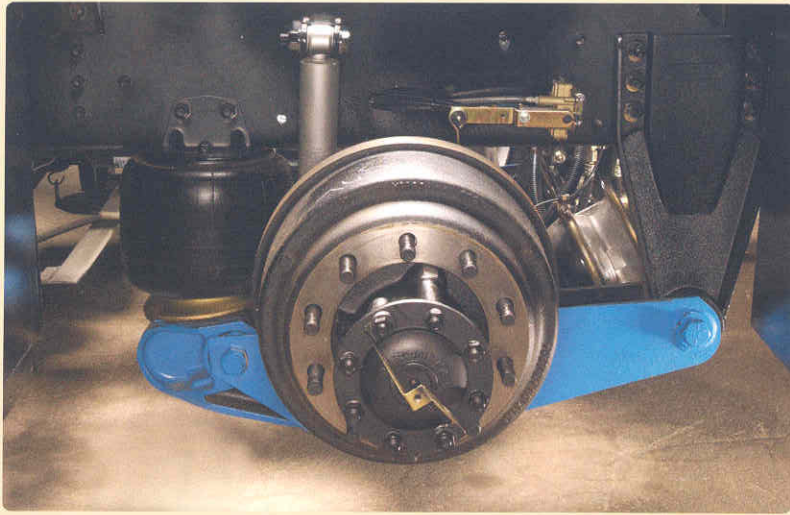


▲ The front slideroom of the Horizon features Winnebago Industries' innovative StoreMore® slideout system. StoreMore storage compartments are nicely lit and designed to accommodate bulky and odd-shaped items. Best of all, they move with the slideroom for easy access.

## BUILT TO LAST



▲ With the new Evolution Chassis, you'll enjoy 40 percent more exterior storage than a typical diesel pusher. A slideout tray is available to make loading and unloading easier.



▲ **The rear air suspension system** places the air springs in a wide-track stance just inside the rear wheels. This design is more efficient than multi-bag systems and provides optimum stability while protecting the air springs from road debris.

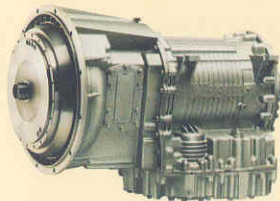


◀ **The Horizon is up to any challenge** with its rugged 330-hp Caterpillar® diesel engine. Or upgrade to an even more robust 350-hp Cummins® diesel engine (shown here) with independent front suspension (NA 36GD). Advanced electronic controls on both engines ensure superior performance and fuel economy. A standard exhaust brake uses the engine to slow the vehicle when needed to promote longer brake life.

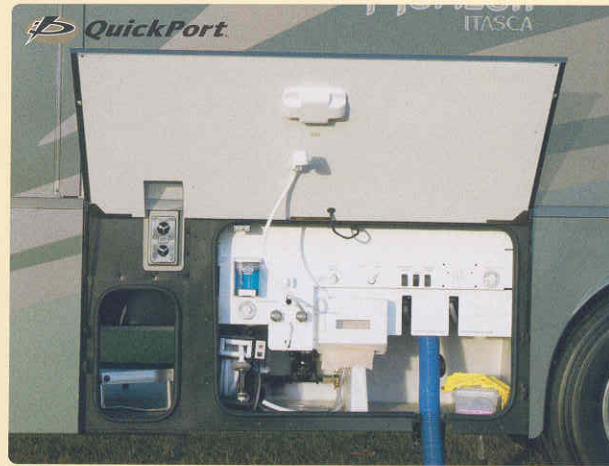


◀ **RVer's are falling in love with two-way radios** and now they're available with every Horizon. The set of four two-way radios recharges from the coach batteries using the built-in charging station. Nickel metal hydride batteries provide up to 15 hours of standby time and 90 minutes of talk time on a single charge.

▶ **The Allison® 3000 MH 6-speed, electronic-controlled transmission** is a proven performer. Its innovative Smart Logic system learns your driving habits and fine tunes shift positions accordingly for maximum performance. A touch pad control makes shifting gears as easy as pushing a button.

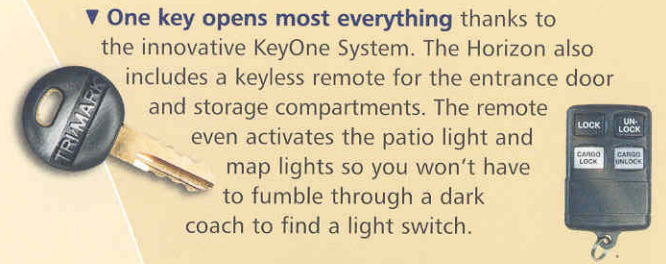


▲ **Anti-lock air brakes are standard** on every Horizon. The accelerator and brake pedals adjust to accommodate most drivers.



◀◀ **You'll find all of the plumbing and electrical connections** in the convenient service center, including the new QuickConnect coupling valve for quick and clean hookups. There's no more

wrestling cords and hoses through small holes—the QuickPort Service Connection Hatch makes hookups a snap. You can also rinse off at the exterior wash station. A water hose with a powered reel and a power cord reel are available on all models.



▼ **One key opens most everything** thanks to the innovative KeyOne System. The Horizon also includes a keyless remote for the entrance door and storage compartments. The remote even activates the patio light and map lights so you won't have to fumble through a dark coach to find a light switch.



▼ **Electric mirrors** adjust easily and include electric defrost to give you a better view of the road. A convex surface prevents blind spots and helps when parking. The mirror frames incorporate turn signals as a courtesy to other drivers. Their breakaway design lets them fold away in tight storage areas.

▼ **Enjoy electrical power** anywhere, anytime with a 7,500 watt Onan® Quiet Diesel™ generator. It slides out easily for servicing.



## Full-Body Exterior Color Themes

You're sure to get noticed when you pull into a campsite driving a 2004 Itasca Horizon. The new full-body paint on every Horizon gives it a style all its own.



Autumnwood



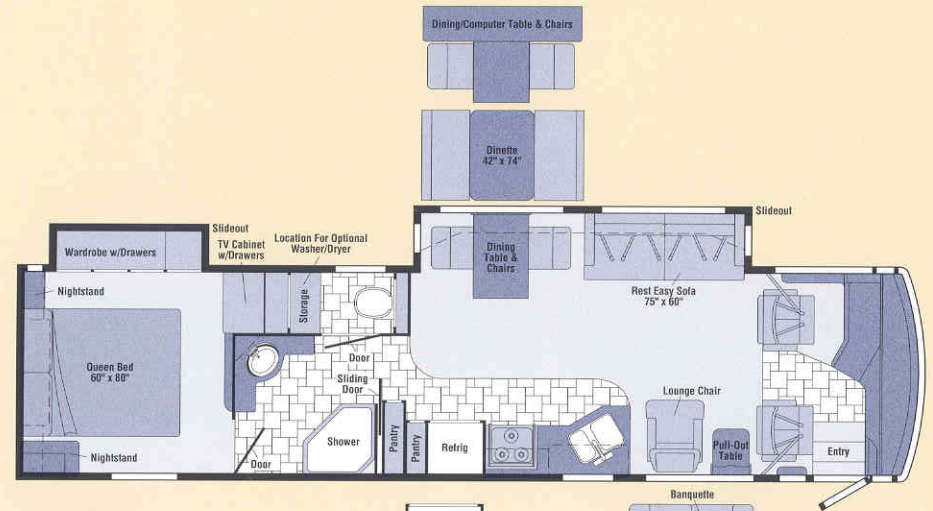
Cypress



Slate Blue

2004 Horizon

# FLOORPLANS



36GD

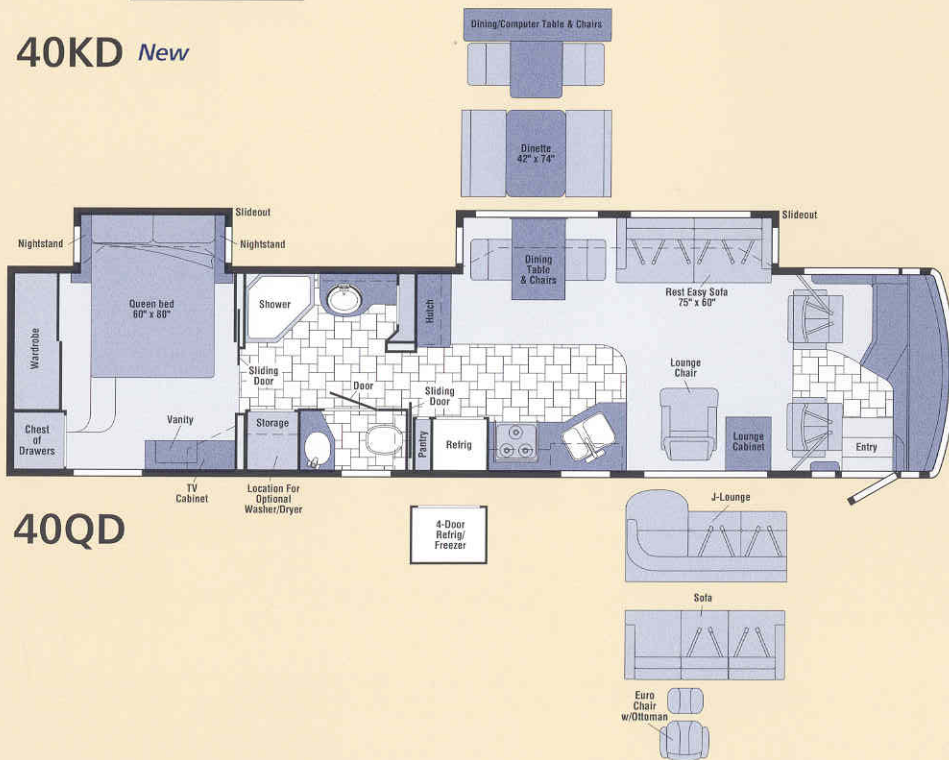


40AD *New*

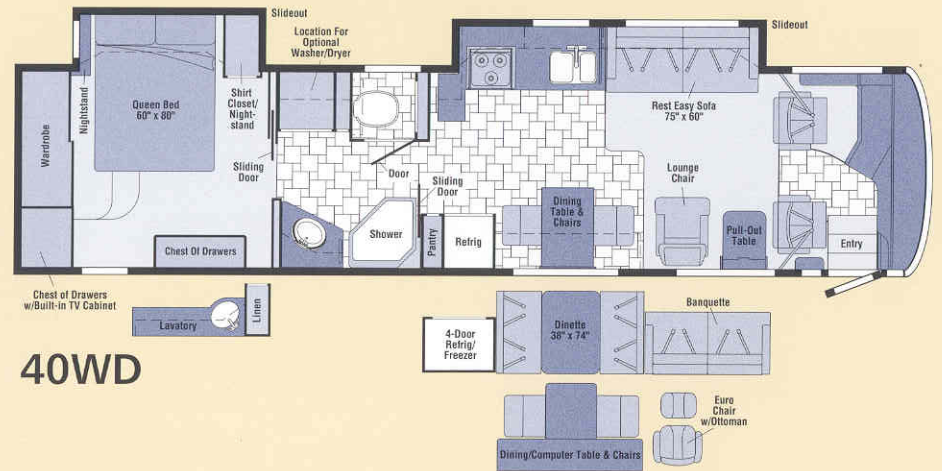




40KD *New*



40QD



40WD



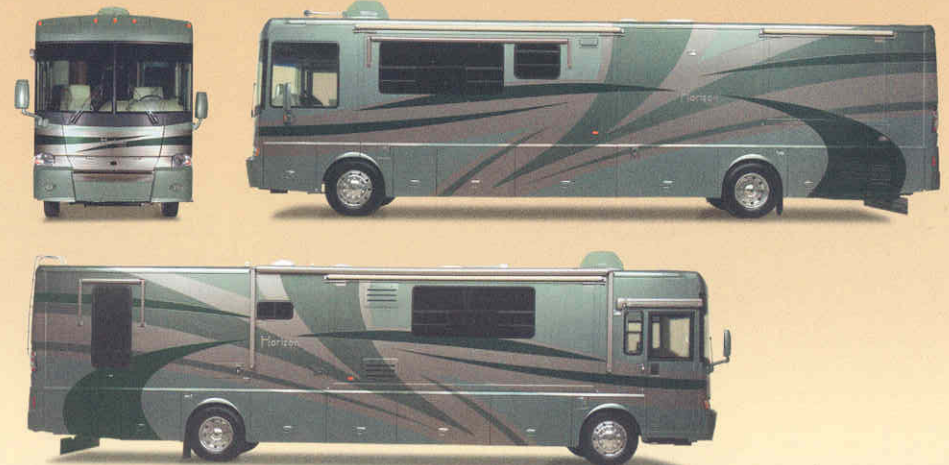
Ceramic Tile Floorcovering



Seat Belts

Note: Dimensions shown are for sleeping space only and may vary due to styling differences. Dashed lines denote overhead storage areas.

Horizon's one-piece fiberglass sidewalls are incredibly strong and durable. The exterior of every Horizon features full-body paint that will look great for years to come. Standard exterior features include hydraulic jacks, stylized aluminum wheels and an electric patio awning. A full-width mud guard protects your tow vehicle from road debris.



## SPECIFICATIONS

Chassis Information	36GD	40QD	40WD	40KD NEW	40AD NEW
Length	36'7"	39'10"	39'10"	39'10"	39'10"
Exterior Height <sup>1</sup>	11'5"	11'5"	11'5"	11'5"	11'5"
Exterior Width <sup>2</sup>	8'5.5"	8'5.5"	8'5.5"	8'5.5"	8'5.5"
Exterior Storage <sup>3</sup> (cu. ft.)	212	212	212	212	212
Interior Height	6'8"	6'8"	6'8"	6'8"	6'8"
Interior Width	8'0.5"	8'0.5"	8'0.5"	8'0.5"	8'0.5"
Fresh Water Capacity w/Heater <sup>5</sup> (gal.)	89	89	89	89	89
Holding Tank Capacity – Black / Gray (gal.)	52 / 48	52 / 48	52 / 48	52 / 48	52 / 48
LP Capacity <sup>4</sup> (gal.)	31	31	31	31	31
Fuel Capacity (gal.)	100	100	100	100	100
GCWR (lbs.)	37,910	42,000	42,000	42,000	42,000
GVWR (lbs.)	27,910	32,000	32,000	32,000	32,000
GAWR – Front (lbs.)	10,410	12,000	12,000	12,000	12,000
GAWR – Rear (lbs.)	17,500	20,000	20,000	20,000	20,000
Wheelbase	228"	267"	267"	267"	267"

## Standards &amp; Options

	36GD	40QD	40WD	40KD	40AD
<b>S</b>					
<b>Automotive/Chassis</b>					
	<b>Chassis – EVOLUTION CHASSIS</b> Freightliner® Caterpillar® 7.2L turbo-charged diesel 330-hp, rear radiator, Allison® 6-speed electronic 3000 MH transmission, NeWay® front & rear air suspension, 160-amp. alternator, four-wheel ABS, exhaust brake				
<b>S S S S</b>	<b>Chassis – EVOLUTION CHASSIS</b> Freightliner® Caterpillar® 7.2L turbo-charged diesel 330-hp, side radiator, Allison® 6-speed electronic 3000 MH transmission, NeWay® front & rear air suspension, 160-amp. alternator, four-wheel ABS, exhaust brake				
<b>0 0 0 0</b>	<b>Chassis – EVOLUTION CHASSIS</b> Freightliner® Caterpillar® 7.2L turbo-charged diesel 330-hp, side radiator, Allison® 6-speed electronic 3000 MH transmission, ZF-IFS front air suspension, NeWay® rear air suspension, 160-amp. alternator, four-wheel ABS, exhaust brake				
<b>0 0 0 0</b>	<b>Chassis – EVOLUTION CHASSIS</b> Freightliner® Cummins® ISC 8.3L turbo-charged diesel 350-hp, side radiator, Allison® 6-speed electronic 3000 MH transmission, ZF-IFS front air suspension, NeWay® rear air suspension, 160-amp. alternator, four-wheel ABS, exhaust brake				
<b>S S S S S</b>	<b>Air Accessory Manifold</b> quick connect, 50' air hose, pressure gauge, manual air shut off, <b>Leveling Jacks</b> HWH® hydraulic, manual control, <b>Tire Tools</b> wrench & leverage bar, <b>Trailer Hitch</b> ® 10,000-lbs. draw bar/500-lbs. maximum vertical tongue weight & wiring, <b>Wheels</b> stylized aluminum				

	36GD	40QD	40WD	40KD	40AD
<b>S S S S S</b>					
<b>Cab Area &amp; Driver Conveniences</b>					
	<b>Cab Seats (UltraLeather HP™)</b> w/3-point adjustable seat belts, armrests, footrest (passenger), lumbar support, multi-adjustable slide/recline & swivel w/remote control, 6-way power assist, <b>Compass</b> electronic w/outdoor thermometer, <b>Console Center Cabinet</b> , <b>Cruise Control</b> , <b>Defroster Fans (2)</b> auxiliary 2-speed w/instrument panel switch, <b>Exhaust Brake Control</b> , <b>Floor Mat</b> driver, carpet, <b>Hood Release</b> , <b>Map Lights (2)</b> , <b>Monitor System</b> rearview, color, single camera & 1-way audio, Sony® <b>Power Door Locks</b> keyless entry w/remote, <b>Powerpoints (2)</b> 12-volt				

	36GD	40QD	40WD	40KD	40AD
<b>S S S S S</b>					
<b>Cab Area &amp; Driver Conveniences (cont.)</b>					
	<b>Shades</b> (front) wraparound, pleated w/pull cords, light filtering, cab windows, <b>Steering Wheel</b> custom, SmartWheel™, <b>Sunvisors (2)</b> powered, <b>Trim Panel</b> driver & passenger sides, <b>Window</b> (driver) full slider w/screen, dual-glazed, <b>Window</b> (passenger) partial slider w/screen, dual-glazed, <b>Windshield Wipers</b> intermittent				
<b>0 0 0 0 0</b>	<b>GPS Navigation System</b>				
<b>0 0 0 0 0</b>	<b>Spotlight</b> roof-mounted w/wireless remote				
<b>0 0 0 0 0</b>	<b>Trip Computer</b> TripTek™				

	36GD	40QD	40WD	40KD	40AD
<b>S S S S S</b>					
<b>Entertainment</b>					
	<b>CB Prep</b> antenna, antenna lead, 12-volt power supply, <b>CD Holder</b> , <b>Entertainment Center (Exterior)</b> AM/FM radio, CD player w/remote DC receptacle, AC duplex receptacle, TV jack, radio antenna, speakers (2), lockable compartment, <b>Bluetooth® (Cab)</b> AM/FM stereo cassette/CD, roof-mounted flexible rubber antenna, speakers (4), weatherband, <b>Radio Power Switch</b> main/auxiliary battery, <b>Satellite System Ready</b> , <b>Sound System</b> deluxe, w/5-channel QSURROUND™ sound, amplifier, cube speakers (5), bass speakers (2), <b>Telephone</b> input & interior jacks, <b>TV 19" AC Color</b> bedroom, stereo w/remote, RCA® <b>TV Enhancement Package</b> antenna (amplified), interior jack(s), coax wiring, cable input, exterior jack, reminder light, <b>VCR/DVD</b> w/remote, <b>Video Selection System</b>				
<b>0 0 0 0 0</b>	<b>Compact Multi-disc Changer</b> w/remote & 10-disc changer, Sony®				
<b>0 0 0 0 0</b>	<b>Radios (4)</b> 2-way				
<b>0 0 0 0 0</b>	<b>Satellite Dish Antenna</b> RV digital, manual elevation sensing unit				
<b>0 0 0 0 0</b>	<b>Satellite Dish</b> RV digital, In-Motion				
<b>0 0 0 0 0</b>	<b>Satellite Dish</b> RV digital, power				
<b>0 0 0 0 0</b>	<b>Satellite Radio</b> (available Fall 2003), Sirius®				
<b>0 0 0 0 0</b>	<b>Stereo System (Bedroom)</b> ® AM/FM CD player, alarm clock				

	36GD	40QD	40WD	40KD	40AD
<b>S S S S S</b>					
<b>Entertainment (cont.)</b>					
	<b>TV 24" AC Color</b> front cabinet, flat-screen, stereo w/remote, Sony®				
	<b>TV 27" AC Color</b> front slideout, flat-screen, stereo w/remote, Sony®				


	36GD	40QD	40WD	40KD	40AD
<b>S S S S S</b>					
<b>Interior</b>					
	<b>Accessory Package</b> rechargeable flashlight, rechargeable hand-held vacuum cleaner, <b>Ceiling</b> vinyl, <b>Curtain</b> front wraparound, pleated w/pull cords, <b>Light</b> wall lamp, <b>Lights</b> ceiling w/wall switches, incandescent, <b>Lights</b> fluorescent, recessed, galley, dinette, lounge w/2-way wall switches, <b>Lights</b> reading, auxiliary, <b>Shades</b> pleated, day/night, <b>Sliding Stepwell Cover Panel</b> powered, <b>Windows</b> dual-glazed/thermo-insulated				
<b>S S</b>	<b>Cupholder(s)</b>				
<b>S</b>	<b>Picture</b>				

	36GD	40QD	40WD	40KD	40AD
<b>0 0 0 0 0</b>					
<b>Cabinetry</b>					
	<b>Portsmouth Oak</b> stile-and-rail construction w/arched raised-panel inserts on upper doors, square raised-panel inserts on lower doors				
<b>0 0 0 0 0</b>	<b>Concert Cherry</b> stile-and-rail construction w/arched raised-panel inserts on upper doors, square raised-panel inserts on lower doors				
<b>0 0 0 0 0</b>	<b>Washed Maple</b> stile-and-rail construction w/arched raised-panel inserts on upper doors, square raised-panel inserts on lower doors				

	36GD	40QD	40WD	40KD	40AD
<b>S S S S S</b>					
<b>Countertops</b>					
	<b>Solid-Surface</b> galley & bath, Corian®				

	36GD	40QD	40WD	40KD	40AD
<b>S S S S S</b>					
<b>Floorcovering</b>					
	<b>Carpeting</b> w/pad, <b>Ceramic Tile</b> galley, bath & cab				

	36GD	40QD	40WD	40KD	40AD
<b>0 0</b>					
<b>Furniture</b>					
<b>0 0</b>	<b>Banquette</b> ® (Fabric) w/throw pillows				
<b>0 0 0 0</b>	<b>Banquette</b> ® (UltraLeather HP™) w/throw pillows				
	<b>Full Comfort Dinette</b> w/access to storage below				
<b>S</b>	<b>Buffet</b> cabinet w/wood top				
<b>0</b>	<b>Buffet</b> cabinet w/solid-surface top, Corian®				
<b>S</b>	<b>Chair (Fabric)</b> lounge, hoop-base, decorative lamp w/table & storage underneath				
<b>S S</b>	<b>Chair (Fabric)</b> lounge, hoop-base, cabinet w/table				
<b>0 0 0 0</b>	<b>Chair (UltraLeather HP™)</b> lounge, hoop-base				
<b>S S S S S</b>	<b>Dining Table &amp; Chairs</b> (2) free standing, (2) folding				
<b>0 S</b>	<b>J-Love Seat (Fabric)</b>				
<b>0 0</b>	<b>J-Love Seat (UltraLeather HP™)</b> bottom storage drawer, Flexsteel®				
<b>0 0 0 0</b>	<b>Lounge Chair</b> ® (Leather) Euro w/ottoman				
<b>0 0 0 0</b>	<b>Multi-function Table &amp; Chairs</b> (2) free standing, (2) folding				
<b>S S S S S</b>	<b>Multi-Position Lounge</b> ® (Fabric) w/throw pillows				
<b>0 0 0 0 0</b>	<b>Multi-Position Lounge</b> ® (Fabric) dual				

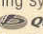

366D	400D	40WD	40KD	40AD	<b>Furniture (cont.)</b>
0	0	0	0	0	 <b>Multi-Position Lounge<sup>5</sup> (UltraLeather HP™)</b> dual recliners
0	0				<b>Sofa (UltraLeather HP™)</b> w/throw pillows

366D	400D	40WD	40KD	40AD	<b>Galley</b>
S	S	S	S	S	<b>Coffeemaker</b> , <b>Countertop Corian<sup>®</sup> Faucet</b> single-control w/pullout sprayer, <b>Moen<sup>®</sup> Lights</b> fluorescent on ceiling & under cabinet, <b>Microwave/Convection Oven</b> w/exterior vent range fan, residential 30", <b>Sharp<sup>®</sup> Mirror(s)</b> , <b>Pantry<sup>2</sup> Range Cover</b> flush-mounted (countertop material), <b>Range Top</b> 3-burner w/storage below, recessed, sealed burners, <b>Amana<sup>®</sup> Refrigerator/Freezer</b> large double-door w/icemaker, <b>Norcold<sup>®</sup> Roof Vent</b> powered ventilator fan, <b>Silverware Tray</b> , <b>Sink</b> double-bowl, stainless steel, recessed, w/sink covers (countertop material), <b>Towel Rack</b> wire, <b>Wall Border</b> , <b>Wastepaper Basket</b> , <b>Water Purification System</b> Everpure <sup>®</sup>
0	0				<b>Dishwasher</b>
S	S				<b>Island Storage Cabinet</b>
	S				<b>Magazine Rack<sup>5</sup></b>
0	0	0	0	0	<b>Microwave/Speedcook Oven</b> w/range fan, residential 30", G.E. Advantium™
0	0	0	0	0	<b>Range</b> 3-burner w/large oven, glass door w/storage below, recessed, sealed burners, <b>Amana<sup>®</sup></b>
0	0	0	0	0	<b>Refrigerator/Freezer<sup>3</sup></b> 4-door w/icemaker, <b>Norcold<sup>®</sup></b>
	S				<b>Spice Rack</b>
	S	S			<b>Utility Tray</b> tip-out

366D	400D	40WD	40KD	40AD	<b>Bath</b>
S	S	S	S	S	<b>Cabinet</b> lavatory, <b>Cabinet</b> linen, <b>Cabinet</b> medicine, <b>Countertop</b> w/backsplash, <b>Corian</b> , <b>Faucet(s)</b> (lavatory) dual-control, <b>Moen<sup>®</sup> Faucet</b> (shower) single-control w/flexible showerhead, <b>Posi-Temp<sup>®</sup> Moen<sup>®</sup> Hand-held Showerhead</b> , <b>Light</b> shower, <b>Lights</b> make-up, <b>Roof Vent</b> insulated, power, w/rain sensor, <b>Shower</b> w/wall surround, <b>Shower Door</b> textured glass, <b>Skylight</b> , <b>Sink</b> oval, <b>Tissue Holder</b> , <b>Toilet</b> porcelain w/hand lever, <b>Towel Rack</b> 3-rod, <b>Wall Chair Rail</b>
S	S	S	S	S	<b>Fold-down Shower Seat</b>
S	S	S			<b>Robe Hook</b>
	S				<b>Sink</b> oval, private toilet area
	S	S	S	S	<b>Towel Bar</b>
S	S	S	S	S	<b>Towel Ring</b>

366D	400D	40WD	40KD	40AD	<b>Bedroom</b>
S	S	S	S	S	<b>Alarm Clock</b> , <b>Bed</b> Sleep Number <sup>®</sup> queen-size mattress by Select Comfort™ w/underbed storage (NA 366D), bedspread, pillows, throw pillows, <b>Cabinet</b> wardrobe, carpeted floor, cedar lined, <b>Ceiling Molding</b> , <b>Headboard</b> , <b>Lights</b> reading, <b>Light</b> decorative ceiling w/dimmer, <b>Nightstand(s)</b> , <b>Powerpoint</b> 12-volt receptacle
0	0	0			<b>Cabinet</b> lavatory, <b>Cabinet</b> medicine, <b>Faucet</b> (lavatory) dual-control, <b>Moen<sup>®</sup> Lights</b> make-up, <b>Sink</b> oval, <b>Towel Ring</b>
0					<b>Cabinet</b> linen
	S				<b>Chair (Fabric)</b> lounge, w/ottoman, <b>Flexsteel<sup>®</sup></b>
S	S	S	S	S	<b>Chest of Drawers</b>
	0				<b>Fireplace</b> electric
S	S				<b>Light</b> decorative wall lamp

366D	400D	40WD	40KD	40AD	<b>Exterior</b>
S	S	S	S	S	<b>Air Horns</b> roof-mounted, <b>Awning</b> slideroom cover, <b>Awning<sup>5</sup> patio</b> , entrance door, electric, <b>Awning Rails</b> w/rain gutters, <b>Door</b> entrance w/separate screen door, deadbolt lock, <b>Entrance Door Step</b> single, electric w/doorjamb switch, <b>Full-Body Paint Options</b> Autumnwood, Cypress, Slate Blue, <b>Ladder</b> , <b>Lights</b> fog lamps, <b>Light</b> porch w/interior switch, <b>Light</b> under hood, <b>Lights</b> compartment, <b>Light</b> service, driver-side, <b>Lights</b> auxiliary docking lamps, <b>Locking Fuel-fill Doors</b> , <b>Mirrors</b> electric remote w/defrost, <b>Mud Flaps (2)</b> rear, <b>Mud Guard</b> full-width, <b>Receptacle</b> AC duplex, <b>Sidewall Skin</b> 1-piece smooth fiberglass, high-gloss, <b>Storage Compartments</b> smooth valance panels, trunk liner, gas cylinders, <b>Tri/Mark<sup>®</sup> KeyOne™</b> System, paddle latch, lights
0	0	0	0	0	<b>Awning<sup>5</sup></b> windows
0	0	0	0	0	<b>Compartment Tray</b> slideout
	0	0	0	0	<b>Refrigerator/Freezer</b> (portable, requires slideout tray option)
0	0	0	0	0	<b>Undercoating</b>

366D	400D	40WD	40KD	40AD	<b>Systems</b>
S	S	S	S	S	<b>Automotive Heater/Air Conditioner</b> , <b>Auxiliary Start Circuit</b> , <b>Batteries (Coach) (3)<sup>5</sup></b> deep cycle, <b>Battery (Coach)</b> disconnect system, <b>Battery Charge Control</b> automatic dual, <b>Central Air Heat Pump</b> , <b>Drain</b> 1 1/2" water tank, <b>Electrical Distribution System</b> AC & DC breaker panels, 55-amp. electronic converter/charger <sup>5</sup> , <b>Furnace</b> 40,000 BTU, low profile, <b>Generator</b> 7,500 watt, <b>Onan<sup>®</sup> Quiet Diesel™</b> , <b>Generator/Shoreline Automatic Changeover Switch</b> , <b>Inverter<sup>5</sup></b> DC/AC, 2,000 watt, <b>ONEPLACE™ Systems Center</b> wall-mount, battery digital voltmeter, <b>POWERLINE</b> energy management display, generator hourmeter gauge, generator start/stop switch, heating/A/C thermostat, holding tank levels, LP tank level, solar panel/battery charger light, water heater switch, water heater on light & pilot indicator light, water pump switch, water tank level, <b>Power Cord</b> 50-amp., <b>Service Center (Drainage)</b> drainage valves, holding tank flushing system, 20" sewer hose w/  <b>QuickConnect Coupling Valve</b> ,  <b>QuickPort Service Connection Hatch</b> , <b>Service Center (Electrical/Water)</b> cable inputs, city water hookup/tank diverter fill, drain for fresh water system, exterior wash station w/pump switch, power cord, shoreline/generator automatic changeover switch, telephone input, <b>Solar Panel</b> 10 watt battery charger, <b>Tank</b> flushing system, black tank only, <b>Tank</b> holding, heated compartment, <b>Tank</b> LP, permanent mount w/gauge, <b>TRUEATR Residential Central Air Conditioning System</b> , <b>Water Heater</b> 10-gallon electronic ignition, LP gas/110 vac w/Motoraid <sup>®</sup> <b>Water System Winterization Package</b> water heater bypass valve & siphon tube, <b>Water Hookup</b> city, <b>Water Pump</b> demand, variable speed, <b>Wash Station</b> exterior, <b>Washer/Dryer Prep</b> , <b>Water System Winterizing Valve</b> manual, <b>Water Tank Fill</b> pressurized city hookup w/diverter valve, <b>Water Tank Fill</b> door, locking
S	S	S	S	S	<b>Furnace</b> 25,000 BTU, low profile, secondary
0	0	0			<b>Inverter/Charger<sup>5</sup></b> DC/AC, 2,000 watt w/remote panel
0	0	0	0	0	<b>Vacuum Cleaner</b> central, <b>Dirt Devil<sup>®</sup></b>
0	0	0	0	0	<b>Vacuum Cleaner</b> portable, <b>Black &amp; Decker<sup>®</sup></b>
0	0	0	0	0	<b>Washer/Dryer Combination</b>
0	0	0	0	0	<b>Water System Winterizing Kit</b> automatic

366D	400D	40WD	40KD	40AD	<b>Slideout</b>
S	S	S	S	S	<b>Slideout Room</b> rear w/slideroom cover
	S	S			<b>STOREMORE<sup>®</sup> Slideout Room</b> front, sofa/galley
	S	S			<b>Slideout Room J-lounge/galley</b> (40KD), buffet/dinette (40AD)
S	S	S			<b>STOREMORE<sup>®</sup> Slideout Room</b> front, sofa/dinette
366D	400D	40WD	40KD	40AD	<b>Safety</b>
S	S	S	S	S	<b>Assist Bar(s)</b> interior, <b>Assist Handle</b> exterior, acrylic w/logo, <b>Bumpers</b> front & rear, <b>Detectors/Alarms</b> LP leak, smoke, carbon monoxide, <b>Fire Extinguisher</b> 10 B.C., <b>Ground Fault Interrupter</b> , <b>Light</b> center high-mount brake lamp, <b>Light(s)</b> courtesy w/wall switch(es), <b>Seat Belts</b> cab, 3-point, <b>Seat Belts</b> lap (in selected areas), <b>Window</b> escape, <b>Windshield</b> laminated safety glass
0	0	0	0	0	<b>Security Vault</b> (bedroom) key lockable
366D	400D	40WD	40KD	40AD	<b>Warranty<sup>7</sup></b>
S	S	S	S	S	<b>12-month/15,000-mile basic limited warranty<sup>8</sup></b> , <b>36-month/36,000-mile warranty on structure<sup>5</sup></b> , <b>10-year limited parts &amp; labor warranty on roof skin<sup>8</sup></b>

- The height of each model is based on the curb weight of a typically equipped unit on the standard chassis. The actual height of your vehicle may vary by as much as 2" depending on chassis or equipment variations.
- Horizon<sup>®</sup> floorplans feature a wide-body design — over 96". In making your purchase decision, you should be aware that some states restrict access on some or all state roads to 96" in body width. Before making your purchase decision, you should confirm the road usage laws in the states of interest to you.
- Your motor home's load capacity is designated by weight, not by volume, so you cannot necessarily use all available space when loading your motor home.
- Capacities shown are tank manufacturer's listed water capacity (W.C.). Actual filled LP capacity is 80% of listing due to overfilling prevention device on tank.
- Not all items available in combination. See dealer for details.
- Actual towing capacity is dependent on your particular loading and towing circumstances which includes the GVWR, GAWR and GCWR as well as adequate trailer brakes. Please refer to your vehicle's operator's manual for further towing information.
- See separate chassis warranty details provided in your owner's packet.
- See your dealer for complete warranty information.

NA Not Available

S Standard

O Optional

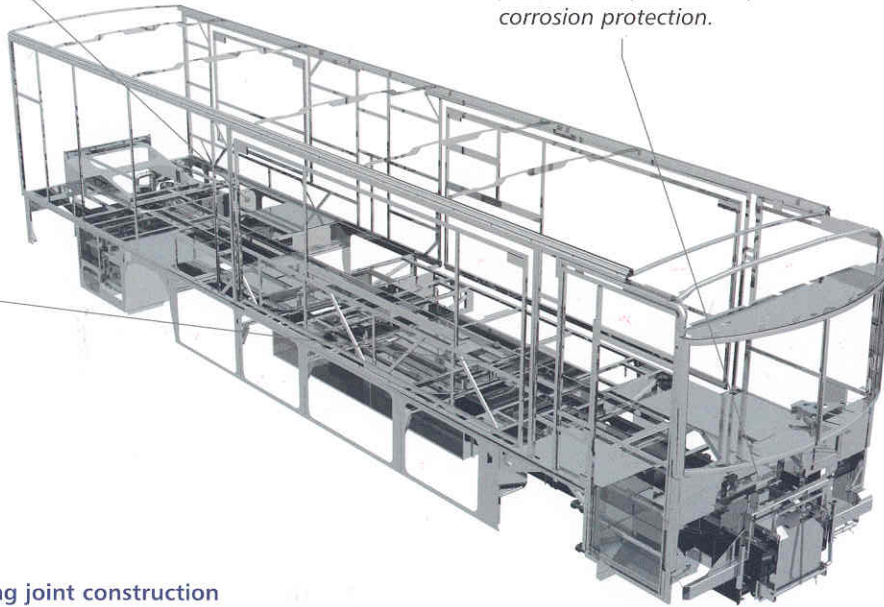
Winnebago Industries<sup>®</sup> continuing program of product improvement makes specifications, equipment, model availability and prices subject to change without notice. Comparisons to other motor homes are based on the most recent information available.

**Not all motor homes are created equal.** SuperStructure® is the term given to Winnebago Industries' structural motor home design and construction. Rather than a single component, it is the culmination of design integration that incorporates steel and aluminum substructures, composite-design laminated floor risers, interlocking joint technology and Thermo-Panel® floor, roof and sidewalls to form an incredibly strong, durable vehicle body.

Laminated risers feature a welded aluminum core for superior strength and provide a stable base for the floor structure and storage compartments.

Critical steel components are treated using an advanced electrodeposition coating process that provides superior corrosion protection.

The foundation substructure maximizes longitudinal and cross-coach support.



Interlocking joint construction utilizes advanced aluminum structural components to create integrated floor-to-sidewall and sidewall-to-roof joints. This design effectively distributes the weight of the walls and roof, making a stronger and more durable body than competitor designs that require screws to carry the weight.



We invented Thermo-Panel sidewall construction and, over the years, have perfected this innovative composite construction process. It combines an exterior fiberglass panel, high-density block foam insulation and welded aluminum support structures to create some of the strongest, most durable and lightweight sidewalls in the industry.



1-year old Itasca fiberglass roof



1-year old competitor's rubber roof

Built to a higher standard. The Horizon features a crowned, one-piece fiberglass roof, backed with a 10-year limited parts-and-labor roof skin warranty. Fiberglass offers superior strength, attractiveness and durability over the rubber roofs found on many competitive models which can chalk, streak and degrade over time. Fiberglass also provides increased puncture and tear resistance.

Committed to service. We back our motor homes with the industry's best service after the sale.



- 12-month/15,000-mile basic limited warranty
- 36-month/36,000-mile warranty on structure
- Standard 10-year limited parts-and-labor roof skin warranty
- Complimentary 24-hour roadside assistance program
- TripSaver Fast Track Parts. TripSaver guarantees that in-stock warranty parts ship directly to your dealer within 24 hours.
- National dealer service network



Recognized quality. Recreation Vehicle Dealer Association members annually rate RV manufacturers on the quality of their products, and sales and service support. Winnebago Industries has achieved the coveted Quality Circle award every year since its inception, the only RV manufacturer to do so.



All motor homes are not created equal. Learn more about what sets Winnebago Industries apart. Ask your dealer for this guide. It will help you learn what makes Winnebago Industries motor homes distinctly superior to other brands.



WARNING: Joining WIT has been known to cause excessive fun. Winnebago-Itasca Travelers (WIT) is a club for owners of Winnebago Industries motor homes. WIT is a great way to meet people and offers you:

- Caravans and rallies
- Local and state group activities
- RV travel benefits

winnebagoinc.com  
NYSE listing: WGO

For Sales and Service Information Contact:



©2003 Winnebago Industries, Inc.



Printed in USA

Seat belts are your most important hookup. Always buckle up.