

SUNCRUISER



29RQ



34RQ

 **ITASCA**

SOME PEOPLE SHOVEL SNOW.

I PREFER TO CARVE IT.

When you think about it, skiing is really a pretty simple concept: You go up the mountain, and then you come back down again. But there's much more to it than that. There's a thrill you get when you're standing at the top of a mountain that you just can't find anywhere else. And skiing offers something for all ages, shapes, sizes and styles. There's more than enough room for snowplowers, mogul skiers, black-diamond skiers and snowboarders.



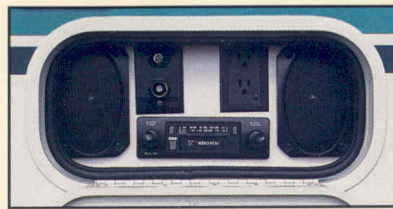
While there are many ways to go down the mountain, more and more people are discovering there's only one way to go to the mountain — the Itasca® Suncruiser®. Over 35 years of Winnebago® Industries' experience has been poured into each and every Suncruiser, resulting in unmatched construction strength and unbeatable comfort. And Suncruiser's high storage design means there's plenty of room to take everyone's skis, poles, boots and bags. Suncruiser. Just imagine the fun you'll have.

Itasca has designed the Suncruiser to stand out from the competition. Flush-mounted storage doors and running lights complement the sleek graphics and aerodynamic design.





The front end has a large wraparound windshield mounted in steel for safety and a tinted shade band for added protection from the sun.



The available entertainment center includes a removable table, AM/FM cassette, speakers, outlets and TV connections. The lockable compartment protects all components.



29RQ

A color coordinated awning is available to protect you from the hot sun or cool rain.

34RQ

The slideout incorporates an automatic cover and a full-view window awning. The cover prevents debris from falling on the roof and helps the awning block out the sun's heat.

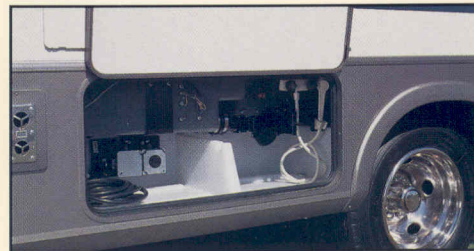


34RQ

Itasca's new solar panel is an extraordinary available feature created to extend the useful life of the RV battery(ies). The 10-watt solar system trickle charges the battery(ies) in sunlight.



No need to bring the dirt inside. Suncruiser has an exterior wash station for cleaning up at the end of the day. It provides access to hot and cold water and a pump switch.



29RQ

Large, locking, pass-through compartments are ideal for storing luggage and more. The carpeted flooring, rubber gaskets and steel construction protect contents from the elements.



29RQ

ONE TRIP DEEP SEA FISHING

AND I WAS HOOKED.

Fishing in a lake and fishing in an ocean are about as much alike as church softball and the big leagues. Imagine reeling in a 250 pound largemouth bass and you start to get a picture of what deep sea fishing is all about. But it isn't just the fish that are bigger. The boats are bigger, the wind and waves are bigger and even the rods, reels and lures are bigger.

The difference between Suncruiser and other



high storage Class-A motor homes is a lot like comparing deep sea fishing to fishing in a pond with a cane pole — there's just no comparison. Take, for instance, Suncruiser's available slideout living area. This revolutionary addition slides out in under 20 seconds to offer increased living room. It's just one of the many innovations that make Suncruiser stick out from the crowd. Once you see all it has to offer, you can't help but get hooked.



The custom-built available slideout design allows for ample lounge space and maneuverability — even when closed. The raised-panel overhead storage compartments beautifully accent the interior fabrics.





The innovative slideout feature is designed with your needs in mind. The added space provides increased comfort and efficiency to make the living area more inviting. The slideout is standard on the 37RW, available on the 34RQ and 34RQ pusher.

I WAS 12 OVER PAR.

AND THAT WAS JUST ON

THE FIRST THREE HOLES.



Some days you just can't win. On the first hole it's your driver that won't work. On the second, it's your putter. And just about the time you figure out those two clubs you start having trouble with your irons. And those are just your clubs. There are also doglegs, water hazards, out of bounds, sand traps and small greens to contend with. No, golf is not an easy game. Maybe that's why it's so much fun.



Just when you're starting to think the problem may be the course, Itasca provides a solution. The 1995 SunCruiser. Imagine the possibilities. When you've had a bad round, throw your clubs in a large exterior storage bay, conveniently misplace your scorecard and move on to greener fairways. But remember, don't wear your spikes while driving a motor home and always replace your divots.

The available six-way adjustable driver's seat enhances the ride by providing more comfort while on the road. The seat swivels and slides to add a new dimension to the lounge area and comes with a lumbar system to support your back.



Space is not a problem in the new SunCruiser. The available slideout feature extends the lounge area for plenty of entertaining space. Windows on the slideout's three walls provide an expansive view of the great outdoors.



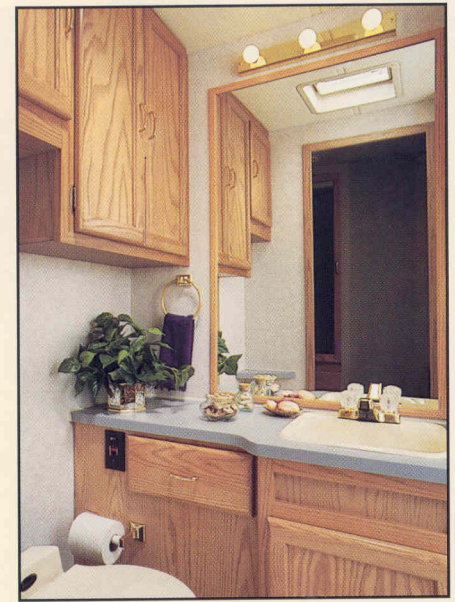
Whatever your cooking needs are — from a sandwich to a three course meal — the Suncruiser's galley allows you to prepare food with ease. Standard features include a four-burner range top, touch-control microwave oven, large double-door refrigerator/freezer and stainless steel sink.

34RQ



To make packing easier, Suncruiser features a large wardrobe for hanging clothing. It's designed with carpeted flooring, a light and a mirrored door.

The well-designed bathroom uses every available inch to offer the most storage and convenience. Standard features include makeup lights, medicine cabinet, large rectangular sink, single-piece shower, tissue holder and towel ring.



The 34RQ features a unique slideout hamper for added convenience.



The available 9" color television rests in a bedroom cabinet on the 34RQ.

Surrounded by windows, the bedroom's bright interior is beautifully coordinated with handcrafted woodwork and wainscoting. The Sealy® innerspring queen size mattress is fully appointed with matching bedspread, pillows, pillow shams, and throw pillow.



MY BOAT'S HAD THE SAME ENGINE

FOR OVER TWENTY YEARS AND IT'S

NEVER RUN OUT OF FUEL.

In this high-tech world of e-mail, computers and instant cash machines, it's nice to see something that hasn't changed much over the years. The basic concept of sailing is the same as it's always been — catching the wind. Just about the time other boats are heading in for the day because it's too windy, sailboats are heading for the open water. Eager for another day of riding the wind.



For some, a day on the water is the next best thing to — well, a day in a motor home. Everybody needs to come to land sometime, and when they do, SunCruiser is ready and waiting to welcome them home. Our twenty-six floorplan combinations mean there's a model that's perfect for just about anyone. And our wide range of available features allows travelers the opportunity to custom design their SunCruiser. There's never been a motor home quite like this before. And that's precisely why SunCruiser is so popular.

The angled galley design on the 29RQ offers all of the comforts of home. Vinyl flooring is available throughout the kitchen and bath to provide a durable, easy-to-clean surface. To assure great drinking water, an advanced water purification system comes standard on every SunCruiser.



To make sleeping comfortable, both the couch and dinette convert to beds. This feature provides additional sleeping space for up to four persons.

29RQ





Itasca created everything in the Suncruiser to fit the traveler's needs. The overhead storage is ideal for stowing food, games or clothing. Large picture windows are tinted to protect your eyes and the interior from the bright sun.

LAST WEEKEND I GOT TOGETHER

WITH MY FAMILY. IT WAS NICE TO

FINALLY MEET SOME OF THEM.

Take a pinch of horseshoes, volleyball and croquet. Add in a dash of barbecue, several large portions of desserts and a complete family tree and you have all the ingredients for a full-blown family reunion. After all, reunions are one of life's more memorable events. It's always fun to meet distant relatives and find out how you're related. You can learn things at a family reunion that you just can't learn anywhere else. (Like Aunt Arlene's famous pumpkin bread recipe.)



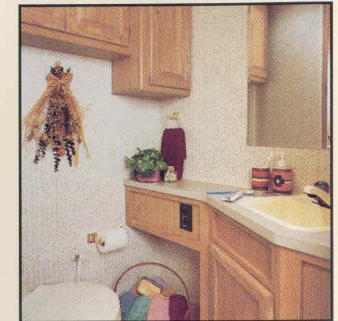
While Suncruiser won't hold an entire family reunion, it will hold quite a few people comfortably. The driver's area is roomy and well-equipped. The galley features everything a gourmet needs in a kitchen. The living area is the perfect place to relax at the end of a long day. And, of course, Suncruiser features a nice, comfortable bedroom. Because no matter how large or small your extended family is, someone is bound to end up sleeping on the floor.



An unbelievable amount of storage is located under the bed for extra towels, blankets, or clothing. Gas springs make accessing the storage easy (prop rods on 34RQ pusher).

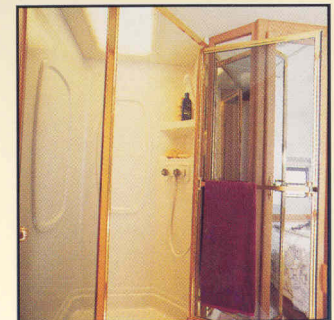


The available VCR and switching system allow video viewing on either the front or available rear TV.



Itasca took special care to make the bathroom perfect. It features wood-doored cabinetry, makeup lights, towel ring and extra counter space.

The shower is designed with molded single-piece walls, a flexible shower head and a textured glass shower door (29RQ & 37RW).



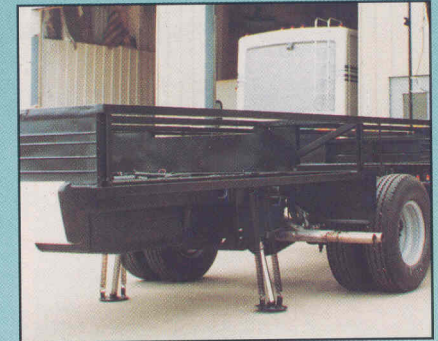
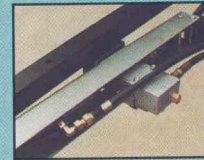
Large Sealy® innerspring mattress, TV stand, wainscoting, matching bedspread, pillow shams and throw pillows are some of the features that make the bedroom so comfortable and charming.

1995 SUNCRUISER SLIDEOUT

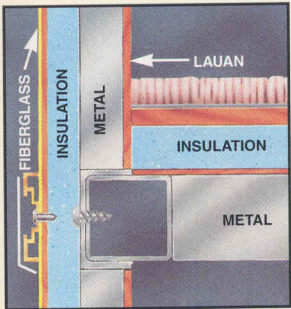
Our new slideout is approximately 13' long with a 36" extension. To utilize the slideout after arriving at your destination, simply turn the ignition switch to the accessory mode, deploy the leveling jacks and push the momentary switch to extend the room. Within 20 seconds, you have an addition to your motor home. The room and slide system are covered for 3 years/36,000 miles. This feature is available on the 34RQ, 34RQ Pusher and standard on the 37RW.



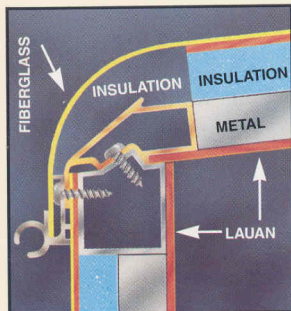
An innovative rack-sensing valve automatically adjusts pressure to the hydraulic supports to assure a smooth extension and retraction of the slideout.



The HWH® bi-axis leveling system is designed to level the motor home with a minimum of frame rail twist. With the use of this system and Itasca's state-of-the-art locking device, our room extension maintains a tight seal.



The weight of the sidewall is fully supported by the floor structure through the design of a unique joint lock.



The roof incorporates a similar locking joint to secure it to the sidewall. Its crowned, overlapping design promotes excellent water run-off.

Steel beam reinforced front bumper mounted directly to chassis

Class II hitch mounted directly to chassis

Windshield & wipers securely mounted in steel

Steel cab, dash & floor structure

Steel appliance tie-downs

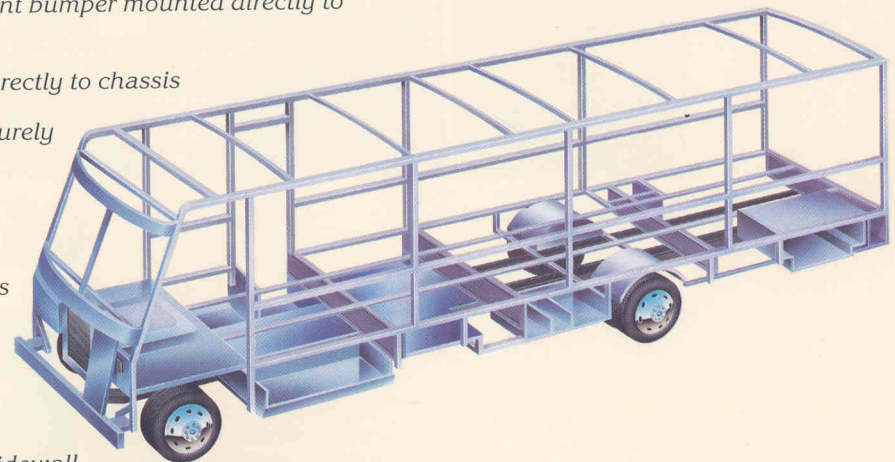
Large, steel storage compartments

Aluminum underbelly

Full welded aluminum sidewall and roof structure

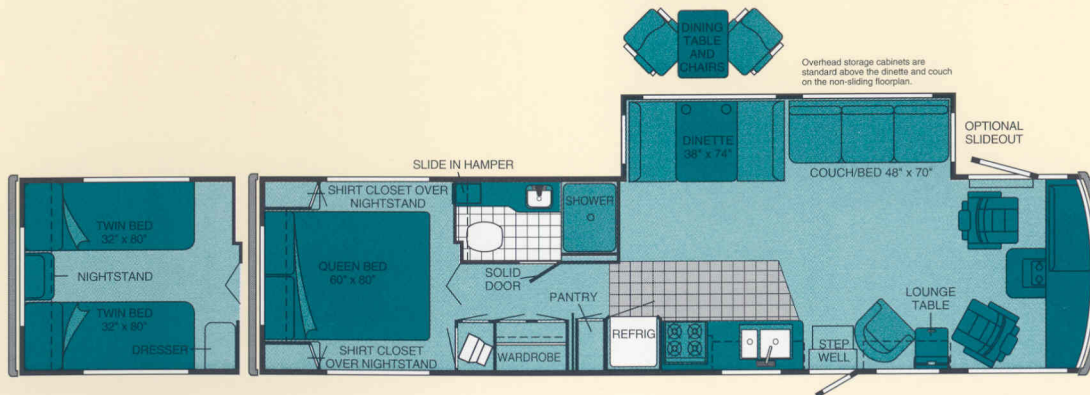
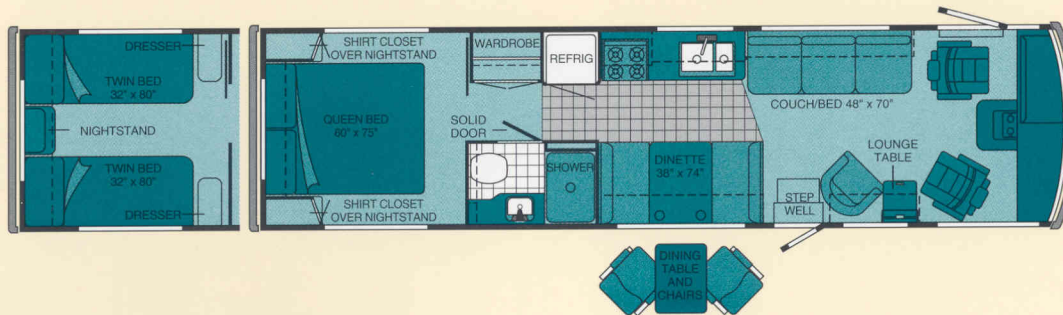
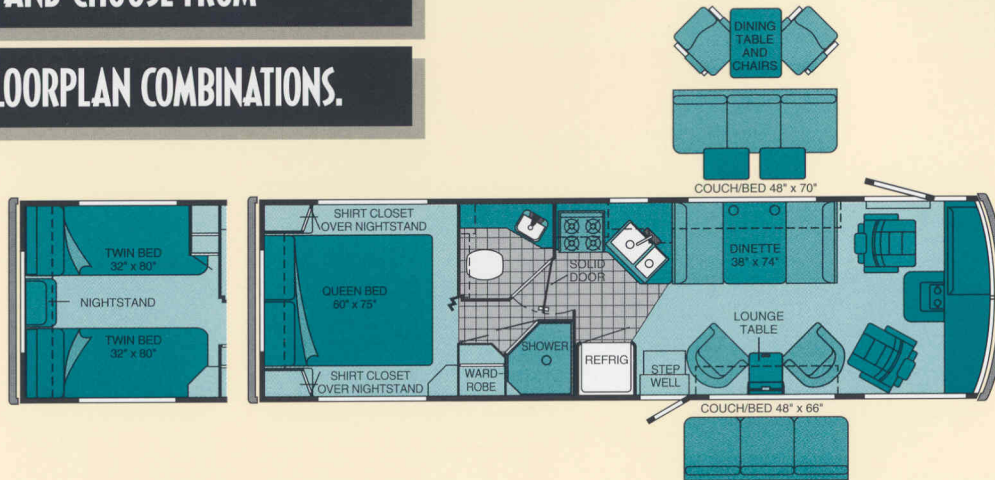
Solid steel foundation welded to chassis

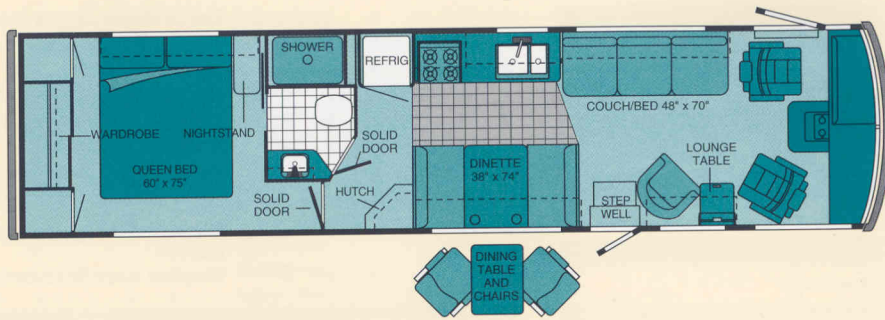
Rust-free aluminum rear bumper



PICK AND CHOOSE FROM

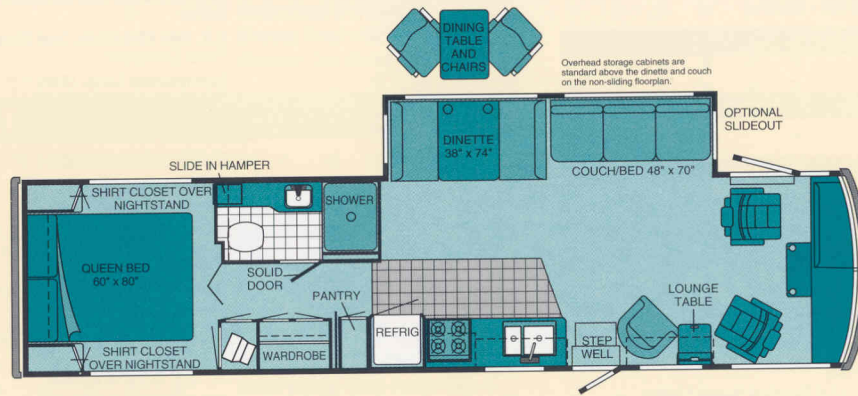
26 FLOORPLAN COMBINATIONS.





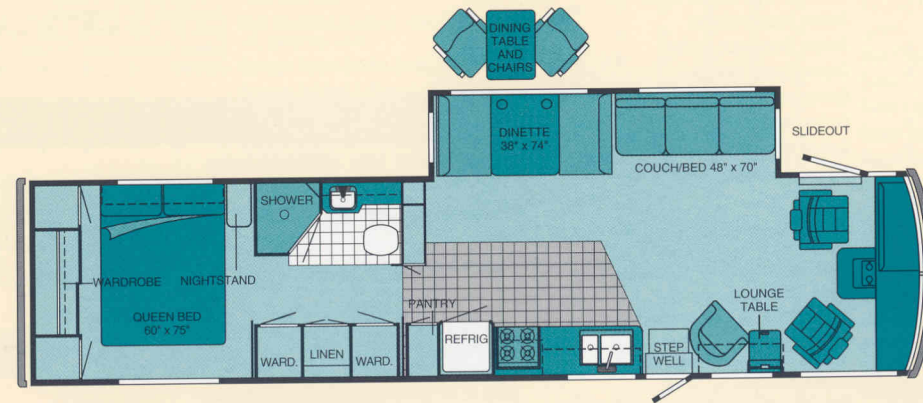
34RA

This unique side aisle design provides more privacy in the bedroom and two entrances to the bathroom; one from the bedroom, the other from the galley. This floorplan comes with a beautiful corner hutch.



34RQ PUSHER

The rear diesel increases power, prolongs engine life and rides quieter than the standard 34RQ. All this with the same efficient use of space and an available slideout that extends with the push of a button.



37RW

Store more with three wardrobes, one linen closet and a handy pantry. The swiveling driver and passenger chairs extend the standard slideout's benefit further to offer an abundance of entertaining space.



Standard Vinyl



Optional Vinyl

Note: Dimensions shown are for sleeping space only and dashed lines denote overhead storage area.

SUNCRUISER INTERIOR DECORS



SANDSTONE

Main Fabric
Accent Fabric
Carpet



MULBERRY

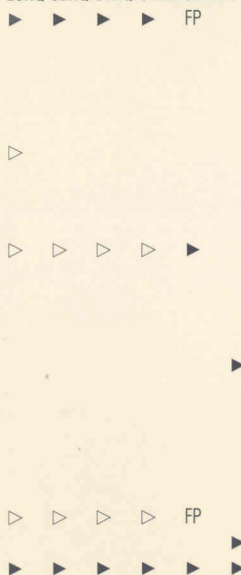
Main Fabric
Accent Fabric
Carpet

1995 SUNCRUISER

29RQ	32RQ	34RQ	34RA	37RW	34RQ Pusher	
29'10"	32'	34'	34'	37'4"	34'	Length
178"	208"	228"	228"	228" + Tag	228"	Wheelbase
78 gal.	78 gal.	78 gal.	78 gal.	FP	NA	Fuel Capacity - Chevrolet
75 gal.	75 gal.	75 gal.	75 gal.	75 gal.	NA	Fuel Capacity - Ford
NA	NA	NA	NA	NA	90 gal.	Fuel Capacity - Oshkosh
86 gal.	106 gal.	106 gal.	106 gal.	106 gal.	92 gal.	Fresh Water Capacity w/Heater
111 gal.	99 gal.	105 gal.	99 gal.	105 gal.	105 gal.	Holding Tank Capacity
60 lbs.	80 lbs.	100 lbs.	100 lbs.	100 lbs.	130 lbs.	LP Capacity
11'5"	11'7"	11'8.5"	11'9.5"	FP	NA	Exterior Height w/Roof Air - Chevrolet
TBD	11'6"	11'8"	11'6"	11'10"	NA	Exterior Height w/Roof Air - Ford*
NA	NA	NA	NA	NA	11'7"	Exterior Height w/Roof Air - Oshkosh*
8'	8'	8'	8'	8'	8'	Exterior Width
6'8"	6'8"	6'8"	6'8"	6'8"	6'8"	Interior Height
7'7"	7'7"	7'7"	7'7"	7'7"	7'7"	Interior Width
82 cu. ft.	88.78 cu. ft.	TBD	110 cu. ft.	TBD	TBD	Exterior Storage
14,800 lbs.	16,000 lbs.	16,000 lbs.	16,000 lbs.	FP	NA	GVWR - Chevrolet
15,200 lbs.	17,000 lbs.	17,000 lbs.	17,000 lbs.	19,000 lbs.	NA	GVWR - Ford
NA	NA	NA	NA	NA	19,840 lbs.	GVWR - Oshkosh

AUTOMOTIVE

29RQ 32RQ 34RQ 34RA 37RW 34RQ Pusher



Chassis - Chevrolet 7.4L 454 V-8 Fuel-Injected Gasoline Engine, Automatic Transmission w/Overdrive & Cooler, Front Suspension: Independent, Coil Spring w/Aux. Air Springs, Rear Suspension: Leaf Spring, 630-CCA Battery/105-Amp. Alternator

Chassis - Chevrolet 6.5L Turbo Diesel Engine, Automatic Transmission w/Overdrive & Cooler, Front Suspension: Gas, Rear Suspension: Leaf Spring, 630-CCA Battery/105-Amp. Alternator

Chassis - Ford 7.5L 460 V-8 Fuel-Injected Gasoline Engine, Automatic Transmission w/Overdrive & Cooler, Front Suspension: Mono-Beam Axle w/Leaf Spring, Rear Suspension: Multi-Leaf Spring, 650-CCA Battery/130-Amp. Alternator

Chassis - Oshkosh 5.9L 230-HP Turbo-Charged, After-Cooled Cummins Rear Diesel Engine, Automatic Transmission w/Cooler, I-Beam w/Leaf Spring Front Suspension, Leaf Spring Rear Suspension, Engine Block Heater, Fuel/Water Separator, Air Flow Indicator, 923-CCA Battery/100-Amp. Alternator

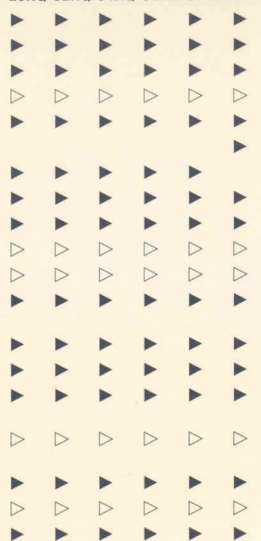
Shocks (Gas) Front, Chevrolet

Springs (Air) Tag Axle

Tires (Radial) w/Spare

DRIVER CONVENIENCES

29RQ 32RQ 34RQ 34RA 37RW 34RQ Pusher



12-V Electrical Supply/Lighter

Battery Charge Control Dual, Automatic

Battery Charger (Solar) Wiring Prep

Battery Charger (Solar)

Battery Disconnect Auxiliary

Cabinet Center Console

Convenience Tray

Cruise Control

Curtain w/Track Front Wrap-Around

Defroster Auxiliary 2-Speed

Driver's Door

Heating/Air Conditioning Automotive Blend Air System

Hood Release Exterior Key Locks

Map Light

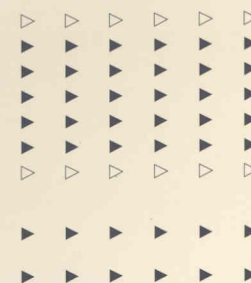
Mirrors (Rear View) Low Mounted, Includes Convex Element

Mirrors (Rear View) Low Mounted, Electric w/Remote & Defrost

Rear View Monitor System Cable Ready

Rear View Monitor System Video/Audio

Seats w/3-Point Retracting Seat Belts Reclining High-Back Design, Hinged Armrests, Lumbar Support, Swivel/Slide Pedestal w/Manual Remote Control



Seat Six-Way Manual Adjust Driver's Seat

Service Light Driver's Side

Start Circuit Auxiliary

Steering Power Assisted w/Tilt Wheel

Storage Cabinet (Front Overhead)

Sunvisors Multi-Adjustable

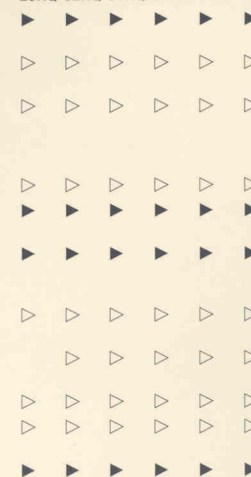
Upgrade - Driver's Convenience Package Carpeted Floor Mats, Wall-Mount Map Pockets

Windows (Driver/Passenger) Sliding, w/Screens

Windshield Wipers (Intermittent)

ENTERTAINMENT

29RQ 32RQ 34RQ 34RA 37RW 34RQ Pusher



Antenna (Radio) Roof-Mounted, Flexible Rubber

C.B. Prep Kit Antenna, Coax Wiring, 12-V Power Connection

Entertainment Center (Patio)* DC Receptacle, 110-V Outlet, TV Jack, Radio Antenna, AM/FM Radio Cassette, Speakers (2), Removable TV Table, Locking Door

Inverter 110-V for TV/VCR

Stereo Power Switch For Main or Auxiliary Battery Use

Stereo w/Digital Clock (Cab) Electronic Tune AM/FM/Cassette Deck w/Speakers (4)

Stereo w/CD Player (Cab) Electronic Tune AM/FM w/Speakers (4)

TV* (9" Color) w/Remote Located in Bedroom

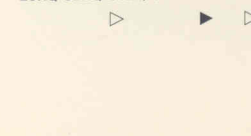
TV* (19" Color) w/Remote

TV* (19" Color) & VCR w/Remotes Switching System, Cabinet Exchange

TV Enhancement Package Antenna (Amplified), DC Receptacles (2), Interior Jacks (2), Coax Wiring, Cable Input, Exterior Antenna Jack, TV Shelf, Stand or Cabinet

SLIDEOUT

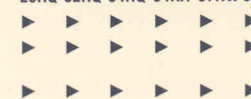
29RQ 32RQ 34RQ 34RA 37RW 34RQ Pusher



Slideout Room (Driver's Side) Approximately 13' Long w/36" Extension, Switch Located on Instrument Panel, Decorative Wall Lamp, Decorative Dinette Light, Coffee Table (FP), Cover & Window Awnings (Option NA on 34RQ w/Chevrolet Chassis)

INTERIOR

29RQ 32RQ 34RQ 34RA 37RW 34RQ Pusher



Cabinets Wood Doors

Carpeting w/Pad Stain Resistant w/Scotchgard™ Protector

Ceiling Padded Vinyl Headliner

NOBODY DOES MORE FOR YOU

DOWN THE ROAD.

ITASCA - Itasca motor homes are named after the source waters of the Mississippi River in Northern Minnesota's Itasca State Park. Itasca, derived from the Latin phrase *Veritas Caput*, means "True Source". Itasca motor homes are the perfect vehicles to carry the Itasca name because they're the "True Source" of fun, adventure and family togetherness.

FACTORY/DEALER - Itasca motor homes are built to exacting standards in our Forest City, Iowa, factory; the most advanced RV production facility in the industry. The majority of components found in Itasca motor homes are manufactured here - from the welded steel cabs and coach floor support structure to the Thermo-Panel® sandwich wall and roof structure. This is one reason why Itasca motor homes have developed a reputation for superior fit and finish. Stop by your nearest dealer and take a look at the complete line of new Itasca motor homes. Free tours of the factory are available year round. Please contact your dealer or call Winnebago® Industries at (515) 582-3535 for more information.



WARRANTY/PREFERRED CARE - Down the road, factory support is never far behind. Twenty-four-hour emergency road service pays for towing to a factory authorized dealer at no cost to you. With over 20,000 locations across North America, quality assistance is just a phone call away with our Preferred Care Program. Plus, our warranty program is one of the most comprehensive in the industry, starting with the 12-month or 15,000-mile protection. In addition, structural components are covered for 36 months/36,000 miles. Furthermore, a 10-year limited warranty protects the roof and walls.



As if this wasn't enough, a one year membership in the Winnebago Industries Preferred Care Program is included with every 1995 Itasca motor home. After the first year, membership in the Preferred Care Program can be extended through membership in the WIT club.

SAFETY - Nothing's more important to our designers and engineers than safety. That's why Itasca motor homes are loaded with safety features throughout including 3-point safety belts, a solid steel foundation welded to the chassis, a steel cab, dash and floor substructure, and a windshield mounted in steel.

WIT - If there's ever been a club on the move, this is it. In addition to giving old and new friends the perfect excuse to get together, the Winnebago-Itasca Travelers (WIT) Club provides Winnebago Industries motor home owners with an outstanding magazine and important services like professional trip routing and mail forwarding. For more information on the WIT Club see your Itasca dealer or call (515) 582-6874.



MOTORSPORTS - Finally, a club for motorsports lovers. When you join the Winnebago Motorsports Team you'll be right at home at racing events across America. Itasca motor homes are part of the Winnebago Industries family of motor homes that have been designated the Official Motor Homes of **NASCAR** and are closely associated with several NHRA drag racing teams. Also, a growing number of NASCAR and NHRA drivers are involved with the Winnebago Motorsports Team. Motorsports members enjoy many benefits including a quarterly newsletter, a racing merchandise catalog and the opportunity to participate in special on-track events at selected races.



For Sales and Service Information Contact:

