



SPORTSMEN

TRAVEL TRAILERS and FIFTH WHEELS



A Change of Pace... A Change of Scene



Helping You Get Away
From It All Since 1972

SPORTSMEN

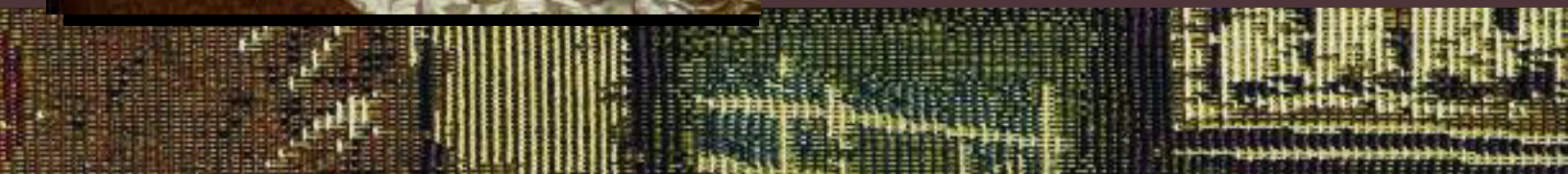
Step into the comfort of the Sportsmen by KZ, for a change of pace and change of scenery. Slow down, relax, go exploring. You'll be getting away from it all, while taking it with you.



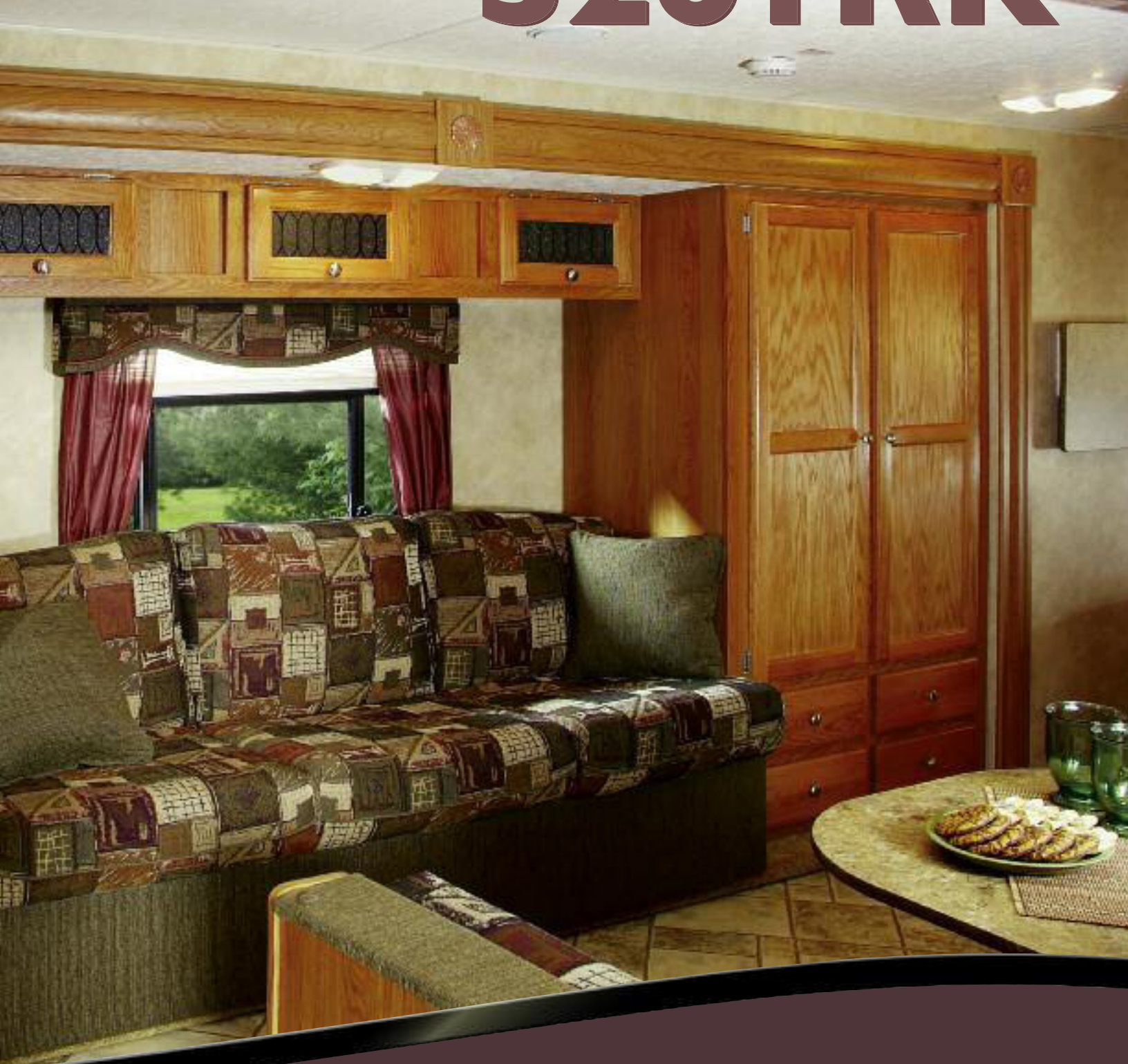
The Sportsmen kitchen features microwave with turntable and a convertible dinette/bed.



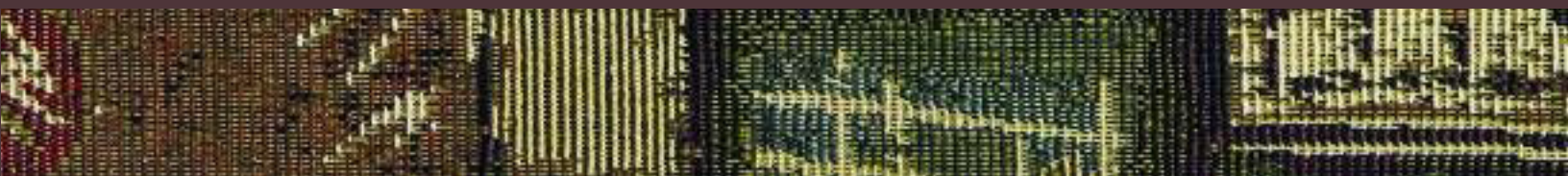
Bedrooms come standard equipped with night shades, lots of storage, and tasteful décor.



S26 IRK



Raised panel oak mortise and tenon cabinetry adds a custom look at a standard price.



S310FK



Décor Selections

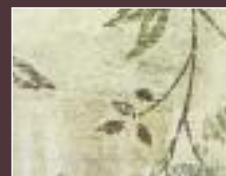
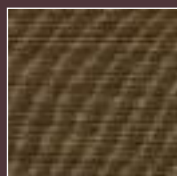
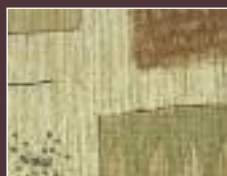
Jewel



Pecan



Pistachio



A slide out in your dining/living area will be quite accommodating.



Spacious and light kitchen is outfitted with essential appliances and efficient floorplan.

Next to the kitchen, the comfortable living area has an entertainment center, which features surround sound.

From bedspread to mirrored closet doors, the bedroom is a cozy retreat.



Built-in vanity, privacy shades, and custom curtains complete the bedroom.

Spacious corner shower and lavatory with above mirrored medicine cabinet provide all the comforts of home.





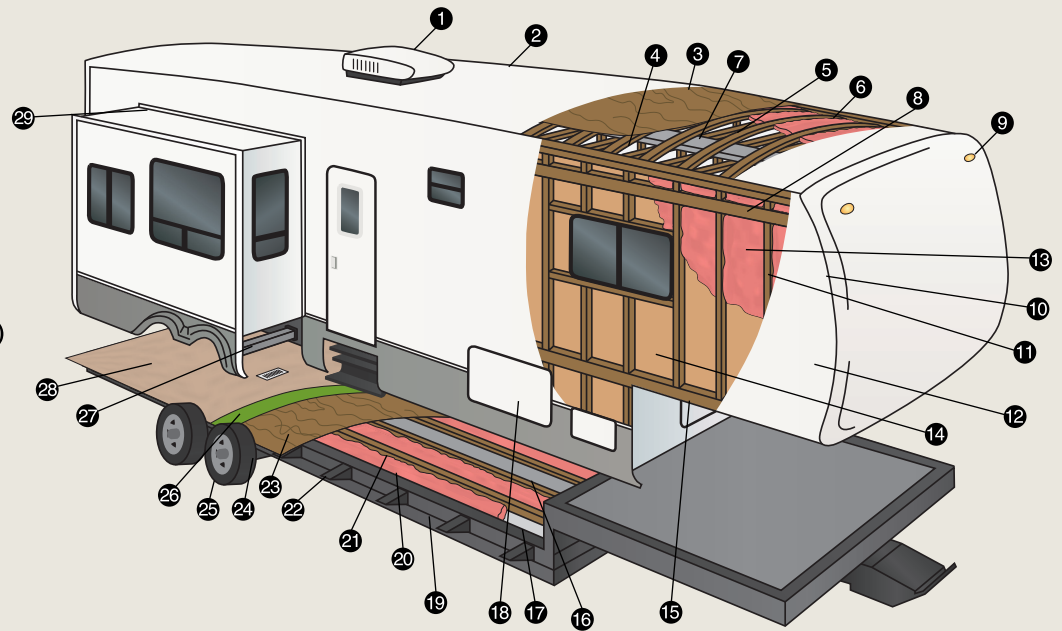
Enclosed Pinbox (Included in Select Pkg)
Pinbox Extension (standard.)



13,500 BTU A/C (standard)
15,000 BTU A/C (optional)



Tinted/Safety Windows (standard.)



Exterior Shower (standard)



Assist Grab Handle (Included in Select Pkg)

Cut-Away Features

- 1 13,500 BTU A/C
- 2 TPO Vinyl Roof
- 3 3/8" Decking
- 4 Vinyl Interior Ceiling Panel
- 5 4 1/2" Wood Truss Rafters, 16" O.C.
- 6 R-7 Batten Insulation
- 7 Insulated Ductwork
- 8 1 1/2" x 5" Heavy Duty Laminated Wood Headers
- 9 Exterior Clearance and Brake Lights
- 10 2x2 Wood Frame Front and End Walls
- 11 2x2 Wood Studs, 16" O.C.
- 12 Metal Siding (standard)
- 13 R-7 Batten Insulation
- 14 Decorative Luan Wall Board
- 15 Single 8" Wood Stringer
- 16 Residential Style Ducted Heat Run in Floor
- 17 Darco® Moisture Barrier
- 18 Large Capacity Pass-Thru Exterior Storage with Radius Doors Front and Side for Easy Access
- 19 Heavy Duty I-beam Frame Construction
- 20 R-7 Batten Insulation
- 21 2x3 Wooden Floor Joists, 16" O.C.
- 22 Fully Welded Out Riggers
- 23 5/8" Tongue and Groove Plywood
- 24 Heavy Duty Leaf Spring Axles
- 25 Heavy Duty Steel Wheels
- 26 Residential Style Carpet Pad
- 27 Rack and Pinion Electric Slide with Manual Override
- 28 28 oz. Residential Carpet or Linoleum
- 29 Triple Sealed Slide Outs



Fiberglass Exterior Siding with Aluminum Frame Construction (optional).

Aluminum Siding with Wood Frame Construction (standard).

Because it Rains!



Here at K-Z we know a little bit about camping, actually we know a lot about camping. One thing you can count on, it will rain. We randomly test our K-Z campers from every product line in our state of the art rain booth. The rain may spoil your fun outside, but it won't inside.



Another KZ standard – newly designed drip rails and spouts keep the water flowing away from the sidewalls.

Travel Trailers	231RS	240BH	251RB	261RK	280BH	280RL	290KB	290FK	291BH	291BHS	310FK	310RKS	320BH	324BH
UVW (Unloaded Vehicle Wt.)	5029	4546	4650	5164	6006	6344	6929	6791	4335	5192	7262	6806	7059	6600
Dry Hitch Wt.	472	582	513	563	691	682	1029	1356	779	665	1359	649	810	832
Dry Axle Wt.	4557	3964	4137	4790	5315	5662	5900	5435	3556	4527	5903	6350	6249	5768
NCC (Net Carrier Capacity)	1471	1954	1850	1836	3994	3656	3071	3209	2165	1308	2738	3194	2941	3400
GVWR	6500	6500	6500	7000	10000	10000	10000	10000	6500	6500	10000	10000	10000	10000
Interior Height	78"	78"	78"	78"	82"	82"	82"	82"	78"	78"	82"	82"	82"	82"
Exterior Width	96"	96"	96"	96"	96"	96"	96"	96"	96"	96"	96"	96"	96"	96"
Exterior Length	27'1"	27'4"	26'	28'9"	29'6"	30'	32'10"	32'	30'6"	30'6"	34'	33'9"	34'	34'
Refrigerator (cu. feet)	6	6	6	6	6	6	6	6	6	6	6	6	6	6
Water Heater Cap. (gal. G/E w/DSI)	6	6	6	6	6	6	6	6	6	6	6	6	6	6
Fresh Water Cap. (gal.)	40	40	40	40	40	40	40	40	40	40	40	40	40	40
Waste Water Cap. (gal.)	32	32	32	32	32	32	32	32	32	32	32	32	32	32
Gray Water Cap. (gal.)	32	32	32	32	32	32	32	32	32	32	32	32	32	32
LP Gas Cap. (lbs.)	60	60	60	60	60	60	60	60	60	60	60	60	60	60
Furnace BTUs (1,000's)	20000	20000	20000	20000	25000	25000	25000	25000	25000	25000	30000	30000	30000	30000
Tire Size	15"	15"	15"	15"	15"	15"	15"	15"	15"	15"	15"	15"	15"	15"
Awning	16'	17'	15'	16'	15'	15'	17'	16'	15'	15'	16'	16'	17'	17'

Fifth Wheels	235RK	245RL2	255BH	285RL	305KS3	305RE	315BH	325BH3
UVW (Unloaded Vehicle Wt.)	6007	7270	6159	7784	8665	8063	8376	9217
Dry Hitch Wt.	974	1337	1961	1605	1815	1766	1734	1967
Dry Axle Wt.	5033	5933	4198	6179	6850	6297	6642	7250
NCC (Net Carrier Capacity)	2543	2530	3741	2216	2335	2237	2124	1783
GVWR	8550	9900	9900	10000	11000	10500	10500	11000
Interior Height	90"	90"	90"	97"	97"	97"	97"	97"
Exterior Width	96"	96"	96"	96"	96"	96"	96"	96"
Exterior Length	25'3"	27'6"	27'11"	31'	32'5"	33'	34'	34'4"
Refrigerator (cu. feet)	6	6	6	6	6	6	6	6
Water Heater Cap. (gal. G/E w/DSI)	6	6	6	6	6	6	6	6
Fresh Water Cap. (gal.)	40	40	40	40	40	40	40	40
Waste Water Cap. (gal.)	35	50	32	50	50	50	50	50
Gray Water Cap. (gal.)	32	32	32	50	50	50	50	50
LP Gas Cap. (lbs.)	60	60	60	60	60	60	60	60
Furnace BTUs (1,000's)	20000	25000	25000	30000	30000	30000	30000	30000
Tire Size	15"	15"	15"	15"	15"	15"	15"	15"
Awning	15'	17'	17'	17'	17'	17'	17'	17'

Select Package

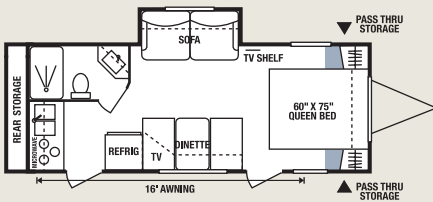
- All of the Sportsmen Mandatory Pkg
- Heated Tanks & Enclosed Insulated Underbelly
- Chrome Rings & Caps on Tires
- Slight over Tub
- Drawers Under Dinette Seats
- Assist Grab Handle
- Decorative Wall Hanging Enclosed Pin Box

Additional Options

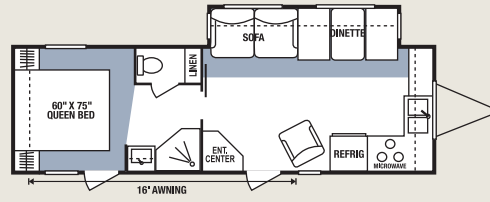
- Fiberglass Exterior
- 15,000 BTU A/C
- Ladder
- Outside Grill
- Spare Tire, Carrier & Cover
- Fantastic Fan
- Hide-A-Bed
- Recliner 1 or 2
- Table & 4 Chairs w/Leaf
- LCD Flat Screen TV (on select models)
- 24" TV (on select models)
- 16" Tires w/12,000 lb. Axles
- Solid Wall w/Swing Door (S325BH3 only)
- 2nd Bath Option (S325BH3 only)
- Black Tank Flush
- Power Awning

Sportsmen Mandatory Package (FORCED OPTION)

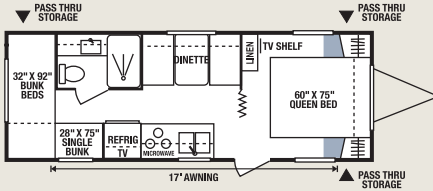
- 13,500 Ducted BTU A/C
- Awning
- Microwave w/Turn Table
- AM/FM/CD Player
- AM/FM Stereo w/DVD & 5.1 Surround Sound (available in most units with full length entertainment centers)
- TV Antenna & Booster
- Oven
- Exterior Shower
- Cable Hook-Up
- TV Shelf in Bedroom
- Night Shades
- 6 Gallon Gas/Electric DSI Water Heater
- Raised Panel Mortise & Tenon Overhead Cabinet Doors
- 30 lb. LP Gas Bottles w/Bottle Cover
- Winter By-Pass Kit
- Bedspread
- Monitor Panel
- Power Vent in Bath
- Porch Light on ODS
- Hitch Light
- Straight Axles
- Tub Surround
- Raised Panel Bath Door
- 6 Cu. Double Door Refer w/Raised Panel Insert
- Pillows for Sofa
- Bathroom Accessories
- Sink Cover
- 15" Tires
- Stabilizer Jacks (4-TT/2-FW)
- Power Jacks (FW)
- Shocks (FW 28' & Larger)
- Tinted/Safety Windows



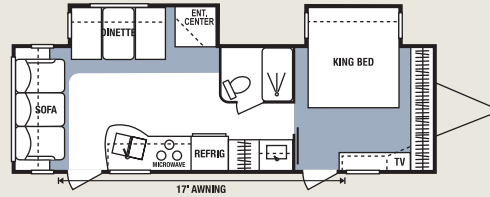
S231RS • UVW 5029 • Dry Hitch Wt. 472 • NCC 1471 • Length 27'1"



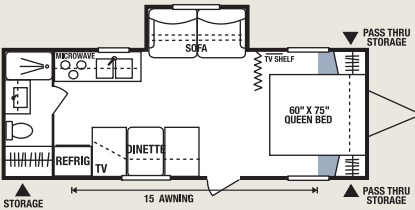
S290FK • UVW 6791 • Dry Hitch Wt. 1356 • NCC 3209 • Length 32'



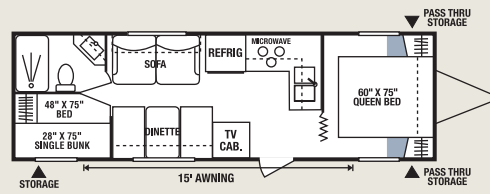
S240BH • UVW 4526 • Dry Hitch Wt. 582 • NCC 1954 • Length 27'4"



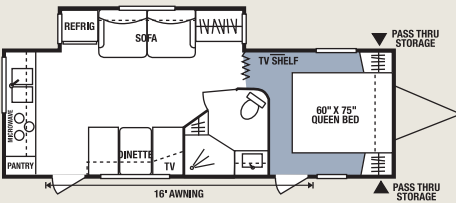
S290KB • UVW 6929 • Dry Hitch Wt. 1029 • NCC 3071 • Length 32'10"



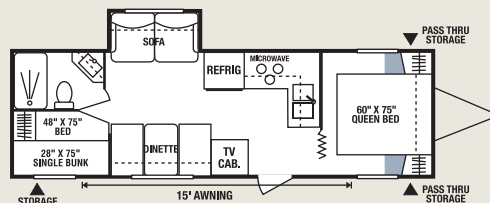
S251RB • UVW 4650 • Dry Hitch Wt. 513 • NCC 1850 • Length 26'



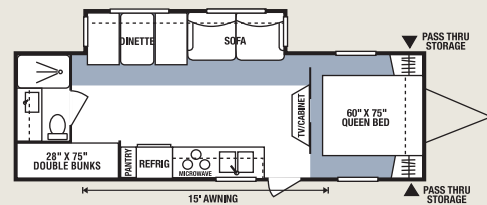
S291BH • UVW 4335 • Dry Hitch Wt. 779 • NCC 2165 • Length 30'6"



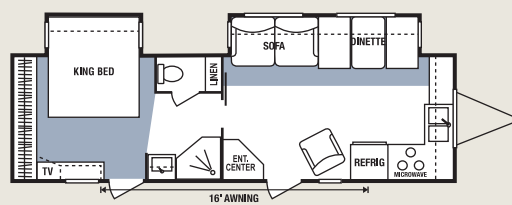
S261RK • UVW 5164 • Dry Hitch Wt. 563 • NCC 1836 • Length 28'11"



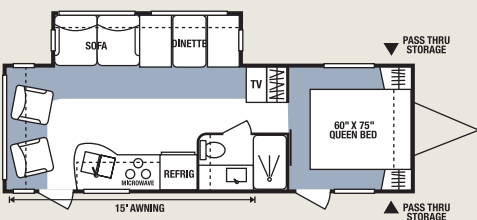
S291BHS • UVW 5192 • Dry Hitch Wt. 665 • NCC 1308 • Length 30'6"



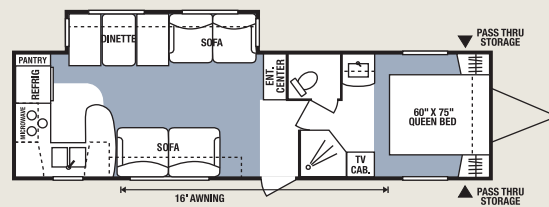
S280BH • UVW 6006 • Dry Hitch Wt. 691 • NCC 3994 • Length 29'6"



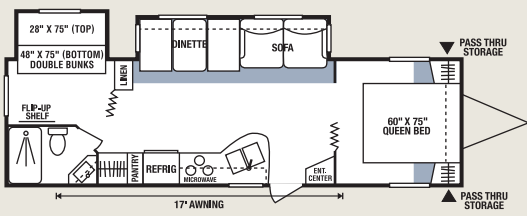
S310FK • UVW 7262 • Dry Hitch Wt. 1359 • NCC 2738 • Length 34'



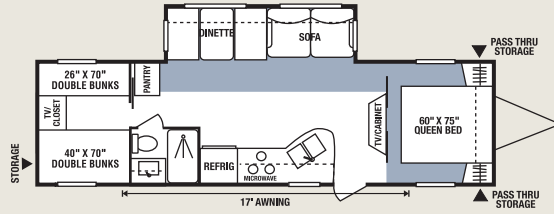
S280RL • UVW 6344 • Dry Hitch Wt. 682 • NCC 3656 • Length 30'



S310RKS • UVW 6806 • Dry Hitch Wt. 649 • NCC 3194 • Length 33'9"

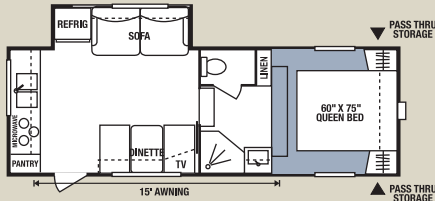


S320BH • UVW 7059 • Dry Hitch Wt. 810 • NCC 2941 • Length 34'

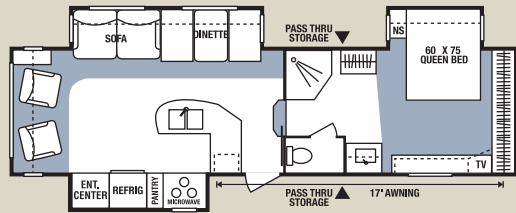


S324BH • UVW 6600 • Dry Hitch Wt. 832 • NCC 3400 • Length 34'

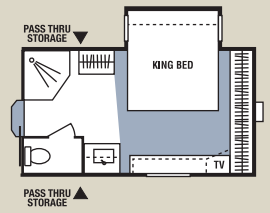
Fifth Wheels



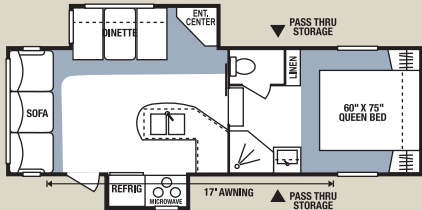
S235RK • UVW 6007 • Dry Hitch Wt. 974
• NCC 2543 • Length 25'3"



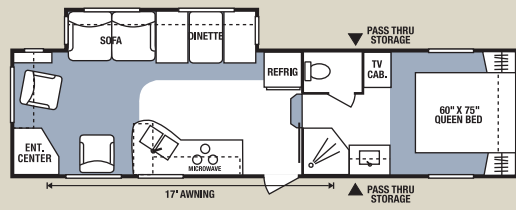
S305KS3 • UVW 8665 • Dry Hitch Wt. 1815
• NCC 2335 • Length 32'5"



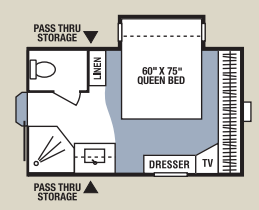
S305KS3 • King BR
Slide Option



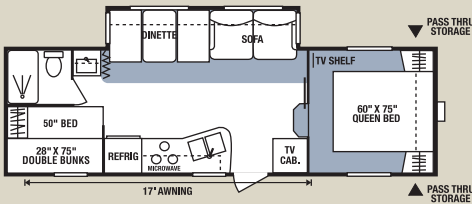
S245RL2 • UVW 7270 • Dry Hitch Wt. 1337
• NCC 2530 • Length 27'6"



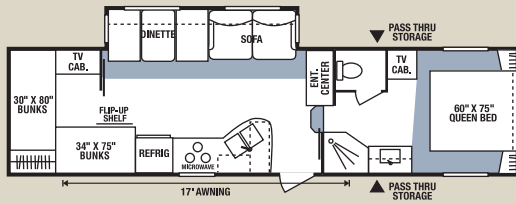
S305RE • UVW 8063 • Dry Hitch Wt. 1766
• NCC 2437 • Length 33'



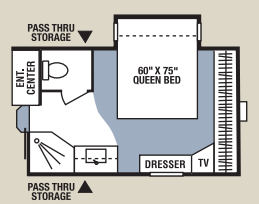
S305RE2 • BR Slide
Option



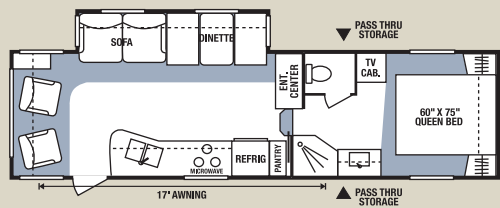
S255BH • UVW 6159 • Dry Hitch Wt. 1961
• NCC 3741 • Length 27'11"



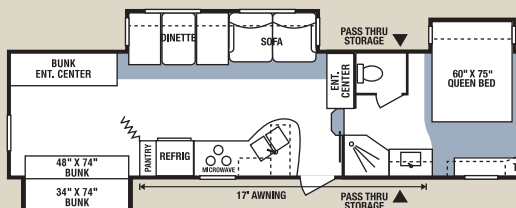
S315BH • UVW 8376 • Dry Hitch Wt. 1734
• NCC 2124 • Length 34'



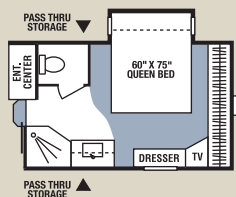
S315BH2 • BR Slide
Option



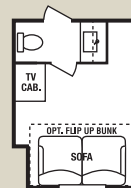
S285RL • UVW 7784 • Dry Hitch Wt. 1605
• NCC 2216 • Length 31'



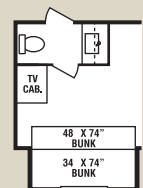
S325BH3 • UVW 9217 • Dry Hitch Wt. 1967
• NCC 1783 • Length 34'4"



S285RL2 • BR Slide
Option



S325BH3 • Bath Option or • Bunk Option



Travel Trailers

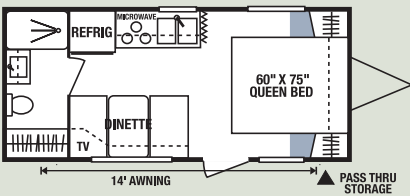
	S202LE	S242LE	S272LE	S280LE	S282LE	S314LE
UVW (Unloaded Vehicle Wt.)	3458	3952	4348	4916	4831	5426
Dry Hitch Wt.	415	508	515	617	584	575
Dry Axle Wt.	3043	3444	3833	4299	4247	4851
NCC (Net Carrier Capacity)	2542	2048	1652	2084	2169	2074
GVWR	6000	6000	6000	7000	7000	7500
Interior Height	78"	78"	78"	78"	78"	78"
Exterior Width	96"	96"	96"	96"	96"	96"
Exterior Length	21'11"	26'6"	29'	29'10"	28'11"	33'
Refrigerator (cu. feet)	5	5	5	5	5	5
Water Htr Cap. (gal. G/E w/ DSI)	6	6	6	6	6	6
Fresh Water Cap. (gal.)	30	30	30	30	30	30
Waste Water Cap. (gal.)	32	32	32	32	32	32
Gray Water Cap. (gal.)	32	32	32	32	32	32
LP Gas Cap. (lbs.)	40	40	40	40	40	40
Furnace BTUs (1,000's)	16	16	20	20	20	20
Tire Size	14"	14"	14"	14"	14"	14"
Awning	14'	15'	15'	14'	15'	16'

Mandatory Living Package (FORCED OPTION)

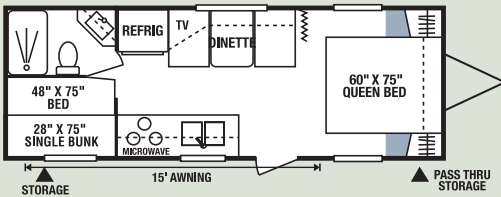
- 5 Cu. Refer
- AM/FM/CD Player
- TV Antenna & Booster
- Acrylic Sink
- 6 Gallon Gas Water Heater
- Solid Oak Framed Mortise & Tenon Cabinet Doors
- 20 lb. Gas Bottles
- Wall Mount Systems Monitor Panel
- Storage Under Dinette Seats
- Fire Extinguisher
- Smoke Detector
- LP Detector
- Radius Trunk Door
- Tandem Axle w/4 Wheel Electric Brakes
- R7 Insulation
- Patio Door Light
- Awning Drip Rail & Drip Spouts
- Large Overhead Cabinets
- Built-in Medicine Cabinet w/Mirror in Bathroom
- Range Hood w/12V Light & Exhaust Fan
- Queen Bed
- 30 Amp Service
- Demand Water Pump
- 12V Converter w/Built-in Battery Charger
- 13,500 BTU A/C
- 3 Burner Cook Top
- Roof Vent in Bath
- Extra Thick .024 Mesa Metal
- 1pc.TPO Vinyl Roof
- Rear Bumper w/Sewer Hose Storage
- 14" Tires
- Awning
- Microwave w/Turn Table

Additional Options

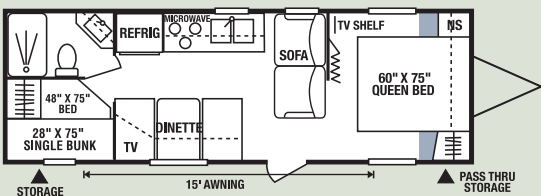
- Outside Grill
- Spare Tire, Carrier & Cover
- Stabilizer Jacks
- Bottle Cover
- Bathroom Accessories



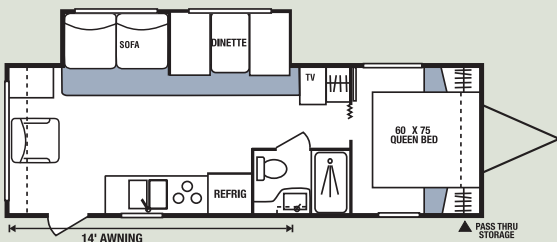
S202LE • UVW 3458 • Dry Hitch Wt. 415 • NCC 2542 • Length 21'11"



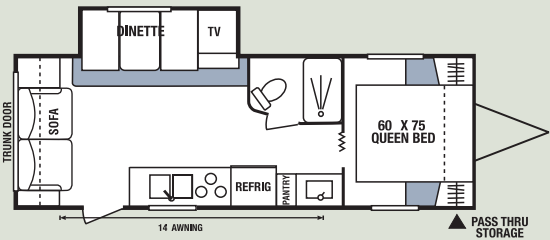
S242LE • UVW 3952 • Dry Hitch Wt. 508 • NCC 2048 • Length 26'6"



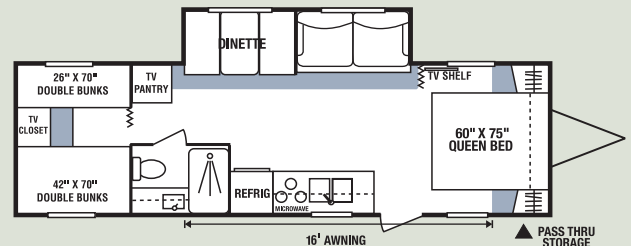
S272LE • UVW 4348 • Dry Hitch Wt. 515 • NCC 1652 • Length 29'



S280LE • UVW 4916 • Dry Hitch Wt. 617 • NCC 2084 • Length 29'10"



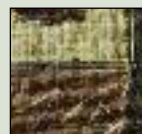
S282LE • UVW TBA • Dry Hitch Wt.TBA • NCC TBA • Length TBA



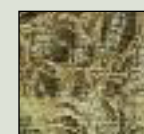
S314LE • UVW 5426 • Dry Hitch Wt. 575 • NCC 2074 • Length 33'

Décor Selections for Sportsmen LE and Park Trailer Models

Jewel



Pecan



Pistachio



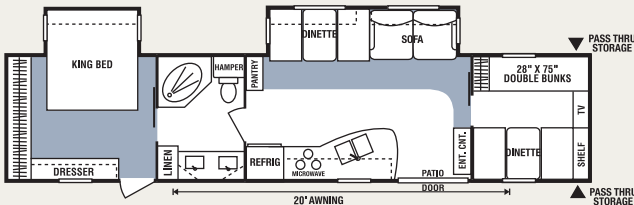
	S383BH2	S391FL2	S401BH3
UVW (Unloaded Vehicle Wt.)	9013	8797	9591
Dry Hitch Wt.	1121	1381	1289
Dry Axle Wt.	7892	7461	8302
NCC (Net Carrier Capacity)	1487	1703	1909
GVWR	10500	10500	11500
Interior Height	84"	84"	84"
Exterior Width	96"	96"	96"
Exterior Length	40'4"	41'5"	41'6"
Refrigerator (cu.)	14"	14"	14"
Water Heater Cap. (gal.)	10	10	10
Fresh Water Cap. (gal.)	40	40	40
Waste Water Cap. (gal.)	32	32	32
Gray Water Cap. (gal.)	32	32	32
LP Gas Cap. (lbs.)	60	60	60
Furnace BTUs (1000's)	40000	40000	40000
Tire Size	15"	15"	15"
Awning	20'	19'	19'

* DSI Water Heater

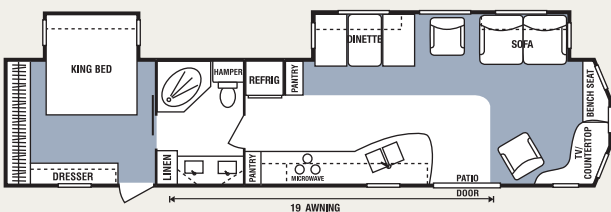
* Limited Models (all fiberglass) adds approximately 10% to total weight.

* Additional Slide Out Rooms each add approximately 500 lbs. to total weight.

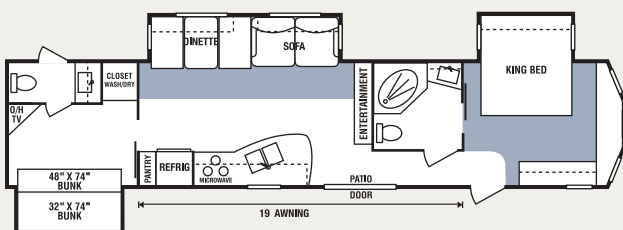
Park Trailer Models



S383BH2 • UVW 9013 • Dry Hitch Wt. 1121 • NCC 1487 • Length 40'4"



S391FL2 • UVW 8797 • Dry Hitch Wt. 1381 • NCC 1703 • Length 41'5"



S401BH3 • UVW 9591 • Dry Hitch Wt. 1289 • NCC 1909 • Length 41'6"

Sportsmen Mandatory Package (Forced Option)

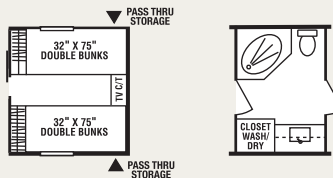
- 13,500 Ducted BTU A/C
- Awning
- Microwave w/Turn Table
- AM/FM Stereo w/DVD & 5.1 Surround Sound
- TV Antenna & Booster
- Exterior Shower
- Cable Hookup
- TV Shelf in Bedroom
- Night Shades
- Raised Panel Mortise & Tenon Overhead Cabinet Doors
- 30 lb. LP Gas Bottles w/Bottle Cover
- Winter By-Pass Kit
- Bedsread
- Monitor Panel
- Power Vent in Bath
- Porch Light on ODS
- Hitch Light
- Straight Axles
- Tub Surround
- Raised Panel Bath Door
- Pillows for Sofa
- Bathroom Accessories
- Sink Cover
- 15" Tires
- 4 Stabilizers Jacks
- Tinted Safety Windows
- 40 gal. Fresh Water Tank

Park Package (Forced Option)

- Free Standing Oven - 24"
- 110V House Type Refer
- 10 Gal Gas/Electric Water Heater
- Patio Door w/Vertical Blind
- Skylight Over Shower
- Atrium Front Profile
- Detachable Hitch
- Prep for A/C in Bedroom
- 40,000 BTU Furnace
- 50 Amp Service
- 84" Ceiling Height
- Garden Tub
- 80" Long Innerspring Mattress
- Assist Grab Handle
- Wall Mounted A/C T-stat
- Drawers under Dinette Seats

Additional Options Available

- Fiberglass Exterior (Forced)
- 13,500 BTU A/C in Bedroom
- 15,000 BTU A/C
- 20 Gal Electric Water Heater
- 30" Entry Door IPO Patio Door
- 6 Cu. Double Door IPO House Type Refer
- Black Tank Flush
- Ceiling Fan
- Fantastic Fan LR
- Garden Tub w/Glass Swing Door
- Hide-A-Bed
- Ladder
- LCD Flat Screen TV
- No Holding Tanks w/House Type Toilet
- Outside Grill
- Plumb for W/D with bath layout change
- Recliner
- Spare Tire, Carrier and Cover
- Table and 4 Chairs w/Leaf
- Pull Out Pantry



S383BH2 • 4 Bunk Option • Washer/Dryer Cabinet Option



S391FL2 • Washer/Dryer Cabinet Option



2X2 WARRANTY – The K-Z 2x2 Warranty is a manufacturer's warranty. Each K-Z product is warranted to the original purchaser for twenty-four (24) months from the original date of purchase. Coverage includes appliances, components, construction and FULL structure. Our warranty is also transferable within the first two (2) years for a small processing fee. For a copy of the warranty with full terms and conditions, ask your local K-Z Dealer or visit our web site at <http://www.kz-rv.com>.

VEHICLE LOADING – Every effort has been made to provide the greatest number of options for the recreation vehicle owner. Each owner is responsible to select loads allowing the recreational vehicle to remain within the manufacturer's specified chassis weight limits. Do not overload the recreational vehicle.

UNLOADED VEHICLE WEIGHT (UVW) – The typical weight of this trailer as built at the factory. The UVW does not include cargo, LP gas, fresh water, options or dealer-installed accessories.

GROSS VEHICLE WEIGHT RATING (GVWR) – The maximum permissible weight of the trailer, including the UVW plus passengers, all cargo, personal items, fluids, options and dealer-installed accessories. The GVRW is equal to or greater than the sum of the UVW and the NCC.

NET CARRYING CAPACITY (NCC) – The maximum weight of all passengers, personal items, fresh water, food, tools, LP gas, other cargo and dealer-installed accessories* that can be carried by the trailer. NCC is equal to or less than GVWR minus UVW.

* The addition of options will decrease the NCC.

It is important for your safety and enjoyment that your tow vehicle be adequately sized and equipped to tow and handle the GVWR of the RV you select. Review weights and rating of your tow vehicle and consult a competent advisor for questions or advice. Whether you are new to RVing or a seasoned veteran, get a feel for the performance of your tow vehicle and the RV together before heading out on the roadways. When you tow an RV, you must drive differently than you do when driving a single vehicle. Practice hooking up, driving, backing up and braking in a safe environment or seek out professional instruction.

See specification chart above. K-Z affixes a weight label to each new RV which lists weight information for that vehicle.

NOTE: This information is intended as a guide only. Weights of individual vehicles are approximate. Consult your Owner's Manual for complete loading, weighing and towing instructions. All weights may vary.

Awarded to K-Z
six years in a row.



 **SPORTSMEN**TM
K-Z • 0985 N 900 W • Shipshewana, IN 46565
E-Mail kz@kz-rv.com • www.kz-rv.com

Dealer:

Due to continual research and advances, manufacturer reserves the right to change specifications, design, price and equipment without notice, and assumes no responsibility for any error in this literature. Some items shown are not included as standard or optional equipment.
©2007K-Z

1/1/08 25M

RVIA