

GULF STREAM COACH

CLASS C MINI MOTORHOMES

2005

B TOURING CRUISER



Cruise the Country in Style



BT TOURING CRUISER

GALLEY CONVENIENCE...

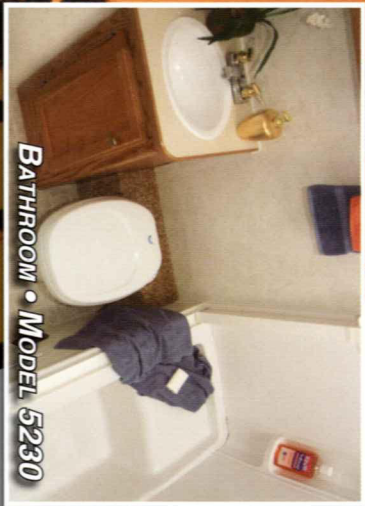
Our wide-open galley offers all the comforts of your kitchen at home. 3-burner high performance range; 2-door, 2-way refrigerator and large convection microwave, you will be able to prepare any of your family's favorite meals.



GALLEY • MODEL 5230

BATHROOM...

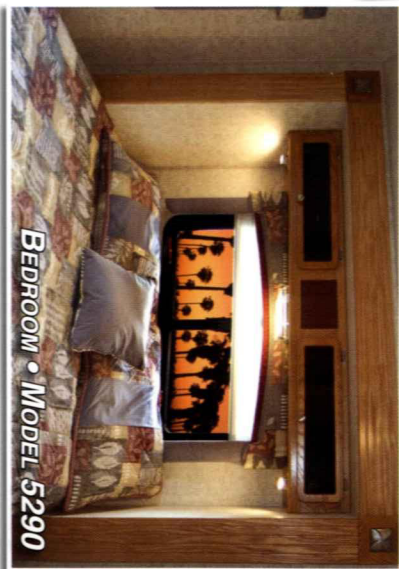
Efficient bathroom design makes it easy to prepare for the day ahead without sacrificing valuable living and storage space.



BATHROOM • MODEL 5230

GALLEY CONVENIENCE...

Our wide-open galley offers all the comforts of your kitchen at home. 3-burner high performance range; 2-door, 2-way refrigerator and large convection microwave, you will be able to prepare any of your family's favorite meals.



BEDROOM • MODEL 5290

SPACIOUS LIVING...

Open living areas that incorporate large slide rooms and residential style furniture make home away from home very comfortable.

Now available on the 5250, Gulf Stream's exclusive sun room slideout. This industry first innovative sun room gives you a wide range of sight from the curb side of the coach and opens up the coach to eliminate that boxed in feeling other minihomes give you.



SUN ROOM • MODEL 5250 OPT., 5291 STD.

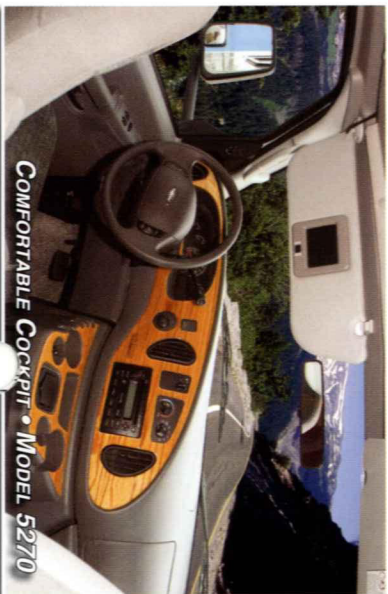
Patent Pending

Driver Convenience PACKAGE

COMFORTABLE COCKPIT...

Make driving your BT Cruiser effortless with the addition of the driver convenience package. This option will give even the most timid driver confidence while backing up with reverse obstacle sensing and backup monitor. Keyless entry also included in this package facilitates easy entry and secured exit of your new motor home.

Driver Convenience Package Available on Ford Chassis Only.



COMFORTABLE COCKPIT • MODEL 5270



Upgrade your already feature packed
8 Touring cruiser with the all new XL Package.

The XL Package gives you more high end features that are generally only
found in high dollar Class A Motorhomes.

Package Includes: Optima Leather Furniture, Electric Sofa, Fiberglass
Kitchen Countertops, Fluorescent Lighting, Hard Rock Maple Cabinets,
Vinyl Ceiling, G-sound Surround Sound Speakers with DVD Player, Oak
Dash and Steering Wheel.

Not available del 5211. Available with Tan or Green decor options only.



Full Stream Exclusive Features & Benefits

SOLID HARDWOOD CABINETRY



PREDRILLED HARDWOOD CONSTRUCTION

Our residential style cabinets are constructed of solid hardwood doors and fronts that are predrilled and screwed then they are stained and top coated with a furniture grade finish that provides long lasting beauty and durability as well as adding strength and quietness to your motorhome.

COMPETITOR'S CABINETRY



Other companies use wrapped cabinet fronts prone to peeling, fading and tearing. The softer composite wood used does not hold screws as well as hardwood resulting in loss of strength and squeaking. Discoloration will degrade the beauty and lower the value of the motorhome.

GALVANIZED STEEL STORAGE COMPARTMENTS



Seamless, carpeted, galvanized steel storage compartments safely cradle your valuables. Rust protective paint and foam sealed for extended and a quiet ride.

Excellent Weathering - Maintaining the vehicle's quality appearance enhances its resale value.

Tear Resistance -

Unlike rubber roofing, Flexroofs hard abuse resistant finish resists tearing, a condition that can cause leaks and lead to expensive repair

Low Maintenance -

Road grime can easily be removed with normal cleaning maintenance. Rubber chalking due to solar breakdown of the roof surface is eliminated, preserving the original appearance and resale value of the vehicle.

Stain Resistance -

Fiberglass Flexroof is designed to resist staining and maintain its quality appearance.

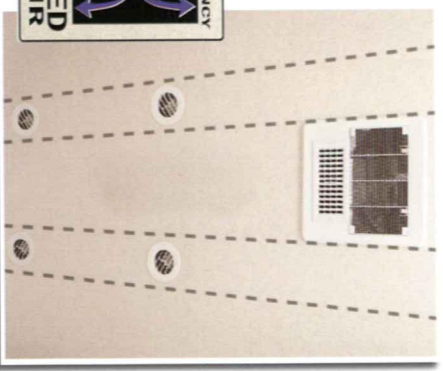
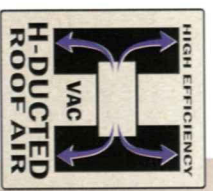
Structural Integrity -

Unlike conventional EPDM rubber roof membranes, Flexroof is a structural component of the roof system.

Textured Fiberglass -

Helps dissipate heat and is slip resistant. In addition, it helps prevent tree limbs from tearing or scratching your roof.

Seamless
Solid Resistant • Permanent Resistant
FIBERGLASS ROOF

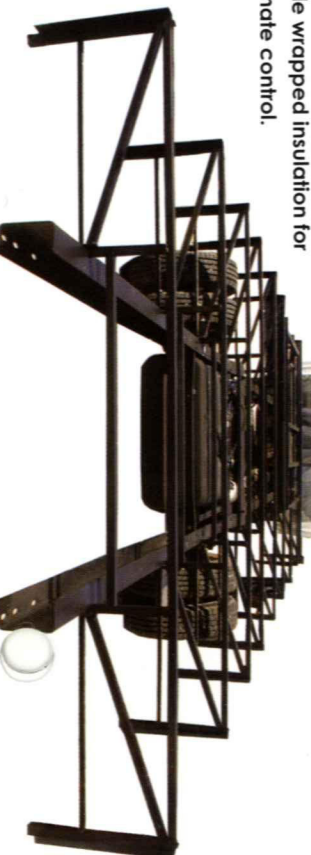


Dual metal H-Ducted air conditioning system with foil bubble wrapped insulation for improved climate control.

SUPER STRENGTH TRUSS SYSTEM

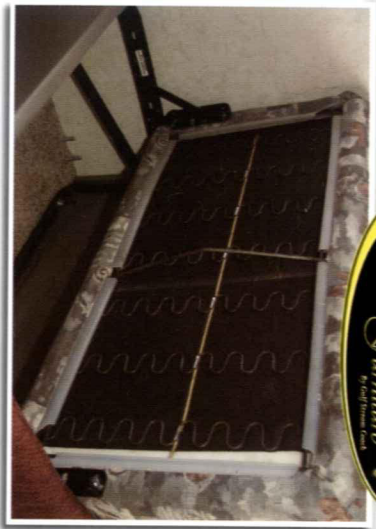


TUFFTRUSS
6000 lbs.



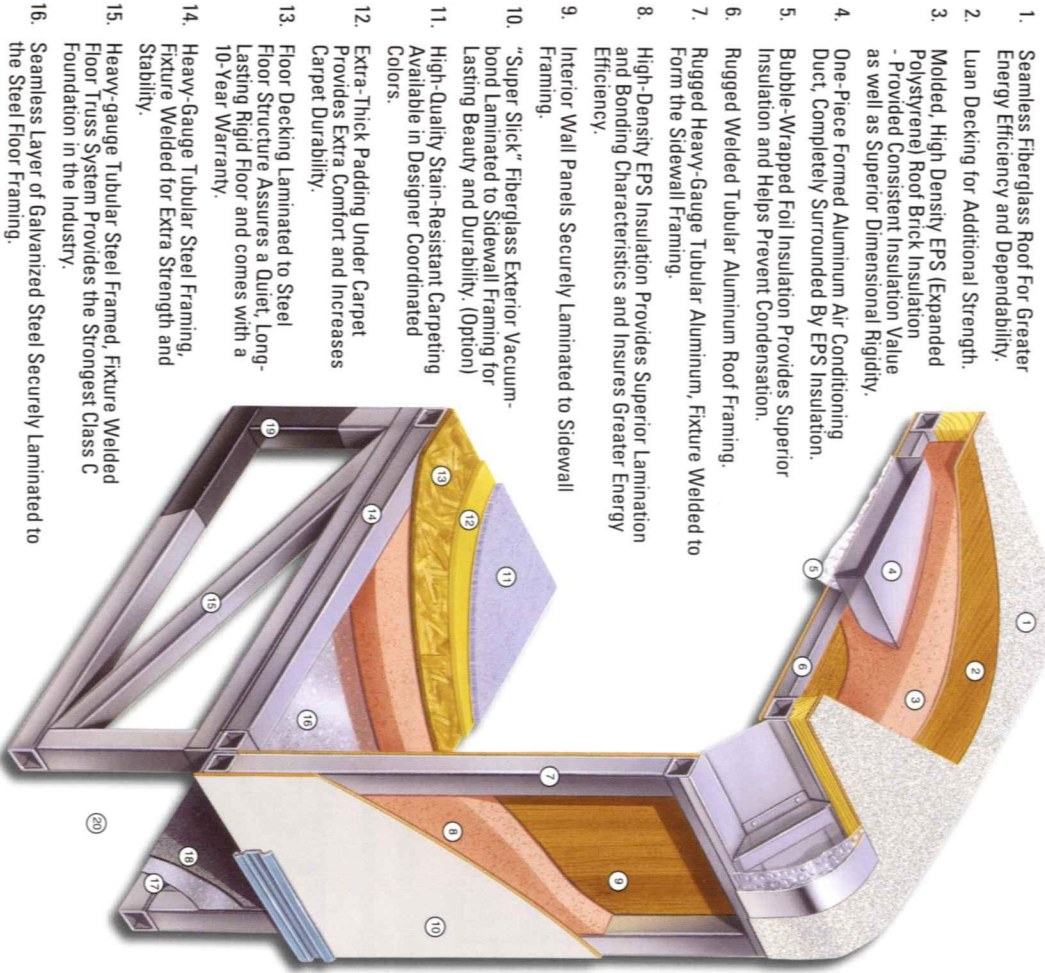
E-Z STORE
NO MORE BUTTONS
NO MORE HASSLE
NO MORE WASTED SPACE

Unique self storing privacy divider featuring quick and simple setup.



Unlike traditional plywood and foam seating Comfort Plus Seating features the strength of steel and the comfort of a sprung dinette cushion.

Cradle of Strength



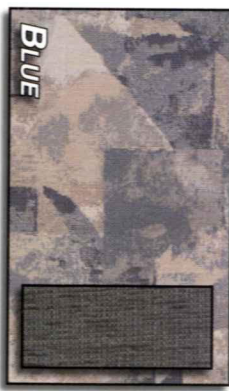
The super strength truss system is unmatched in the class C industry. The structural subfloor foundation begins by welding a network of integrated steel trusses to the chassis rail. Specifically designed to distribute and transfer the tremendous forces from the coach to the chassis rail these trusses are individually tested to withstand 6,000 pounds each. When the chassis is stretched, Gulf Stream stands alone in the industry by using a full 6" C channel extension versus the traditional 4" or less. This practice adds to the strength of the foundation and offers peace of mind that towing is safe on an extension that is safe to the chassis.

6" C CHANNEL EXTENSION



1. Seamless Fiberglass Roof For Greater Energy Efficiency and Dependability.
2. Luan Decking for Additional Strength.
3. Molded, High Density EPS (Expanded Polystyrene) Roof Brick Insulation - Provided Consistent Insulation Value as well as Superior Dimensional Rigidity.
4. One-Piece Formed Aluminum Air Conditioning Duct, Completely Surrounded By EPS Insulation.
5. Bubble-Wrapped Foil Insulation Provides Superior Insulation and Helps Prevent Condensation.
6. Rugged Welded Tubular Aluminum Roof Framing.
7. Rugged Heavy-Gauge Tubular Aluminum, Fixture Welded to Form the Sidewall Framing.
8. High-Density EPS Insulation Provides Superior Lamination and Bonding Characteristics and Insures Greater Energy Efficiency.
9. Interior Wall Panels Securely Laminated to Sidewall Framing.
10. "Super Slick" Fiberglass Exterior Vacuum-bond Laminated to Sidewall Framing for Lasting Beauty and Durability. (Option)
11. High-Quality Stain-Resistant Carpeting Available in Designer Coordinated Colors.
12. Extra-Thick Padding Under Carpet Provides Extra Comfort and Increases Carpet Durability.
13. Floor Decking Laminated to Steel Floor Structure Assures a Quiet, Long-Lasting Rigid Floor and comes with a 10-Year Warranty.
14. Heavy-Gauge Tubular Steel Framing, Fixture Welded for Extra Strength and Stability.
15. Heavy-gauge Tubular Steel Framed, Fixture Welded Floor Truss System Provides the Strongest Class C Foundation in the Industry.
16. Seamless Layer of Galvanized Steel Securely Laminated to the Steel Floor Framing.
17. Galvanized Steel Used to Form Each Storage & Holding Compartment.
18. Durable All-Weather Carpeting Completes Each Accessible Storage Compartment, Providing Extra Protection for Luggage and Valuables.
19. Rust-Prohibitive Paint Coating Applied to All Steel Framing Assures Corrosion and Rust Protection.
20. The Industry's Strongest, Most Spacious Exterior Storage Compartments.

TAKE THE TIME TO COMPARE...
and you will see the exceptional value of a Gulf Stream Coach



Gray Carpet Available with Blue or Platinum. Tan Carpet Available with Tan or Green.

NICKEL PLATE HARDWARE

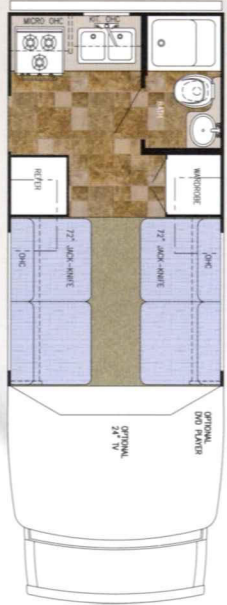




**BI
TOURING
CRUISER**
5211 5250
5230 5270
5290

BI TOURING CRUISER

MODEL 5211



Specifications

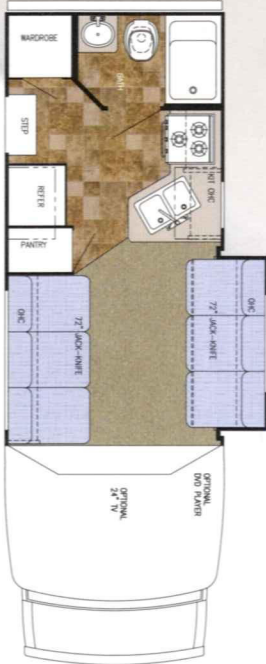
Chassis	Ford E-350
Engine	V-10, 6.8 Liter
GVWR	10,700
Wheelbase	138"
Length	22' 1"
Exterior Height	10' 4"
Exterior Width	96"
Interior Height	77"
Interior Width	91.25"

Capacities

Fuel	37 Gal.
Black	30 Gal.
Grey	30 Gal.
Fresh	38 Gal.
LP Gas Tank	42 Lbs.
Furnace	25,000 Btu.
Water Heater	6 Gal.
Basement Storage	11.8 cu. ft.

Optional: Chevy V-8 (gwr 12,300), Dinette/Sofa, Barrel Chairs/Sofa

MODEL 5230



Specifications

Chassis	Ford E-350
Engine	V-10, 6.8 Liter
GVWR	11,500
Wheelbase	168"
Length	24' 1"
Exterior Height	10' 4"
Exterior Width	96"
Interior Height	77"
Interior Width	91.25"

Capacities

Fuel	55 Gal.
Black	30 Gal.
Grey	30 Gal.
Fresh	38 Gal.
LP Gas Tank	42 Lbs.
Furnace	25,000 Btu.
Water Heater	6 Gal.
Basement Storage	17.2 cu. ft.

Optional: Dinette/Sofa

MODEL 5250



Specifications

Chassis	Ford E-450
Engine	V-10, 6.8 Liter
GVWR	14,050
Wheelbase	176"
Length	25' 7"
Exterior Height	10' 4"
Exterior Width	96"
Interior Height	77"
Interior Width	91.25"

Capacities

Fuel	55 Gal.
Black	30 Gal.
Grey	30 Gal.
Fresh	38 Gal.
LP Gas Tank	42 Lbs.
Furnace	25,000 Btu.
Water Heater	6 Gal.
Basement Storage	26.1 cu. ft.

Optional: Sofa/Sofa, Atrium Sun Room Dinette



STANDARD EXTERIOR GRAPHICS



OPTIONAL PAINT SKIRT



OPTIONAL FULL PAINT GRAPHICS

MODEL 5270



Specifications

Chassis	Ford E-450
Engine	V-10, 6.8 Liter
GVWR	14,050
Wheelbase	196"
Length	28' 6"
Exterior Height	10' 4"
Exterior Width	96"
Interior Height	77"
Interior Width	91.25"

Optional: Dinette/Barrel Chair

Capacities

Fuel	55 Gal.
Black	38 Gal.
Grey	38 Gal.
Fresh	38 Gal.
LP Gas Tank	42 Lbs.
Furnace	25,000 btu.
Water Heater	6 Gal.
Basement Storage	51.4 cu. ft.

Interior & Decor

- Deluxe Carpet w/Padding
- Handwood Cabinet Slides & Doors
- 2-Way Driver & Passenger Seats
- Valances, Lambrquins & Shades on Windows
- Power Vent in Commode
- Fabric Ceiling
- TV Cabinet

Electrical Systems

- Easy-Store 30' Power Cord
- Electric Converter w/ Charger (55 amps)
- Battery Disconnect
- Auxiliary Battery
- Generator Prep.
- Electric Step

Appliances

- 3 Burner Range Top
- Double Door Refrigerator
- Convection Oven/Microwave w/ Power Range Hood
- Ducted Roof Air
- LP Leak Detector
- Carbon Monoxide Detector

Bath & Water

- Full Size Bathroom
- Demand Water System
- City Water Hookup
- Water Bypass Valve

Exterior Construction

- Smooth Fiberglass exterior
- Welded Aluminum Cage Construction
- Fiberglass Roof
- Fiberglass Front Caps & Wings
- Tubular Steel Floor
- Laminated Floor w/ Metal Underbelly
- Foam Seal & Undercoating
- Expansive Radius Windows
- Stainless Steel Wheel Covers
- Outside Grab Handle
- Fiberglass Running Boards

Chassis

- 6.8 Liter Ford V-10
- CD/Cassette Player - AM/FM Stereo w/ 4 speakers
- Power Brakes & Steering
- Radial Tires
- Cruise Control
- Power Windows and Locks

MODEL 5290



Specifications

Chassis	Ford E-450
Engine	V-10, 6.8 Liter
GVWR	14,050
Wheelbase	208"
Length	30' 6"
Exterior Height	10' 4"
Exterior Width	96"
Interior Height	77"
Interior Width	91.25"

Capacities

Fuel	55 Gal.
Black	30 Gal.
Grey	38 Gal.
Fresh	38 Gal.
LP Gas Tank	42 Lbs.
Furnace	25,000 btu.
Water Heater	6 Gal.
Basement Storage	43.1 cu. ft.

Specifications

Chassis	Ford E-450
Engine	V-10, 6.8 Liter
GVWR	14,050
Wheelbase	208"
Length	30' 6"
Exterior Height	10' 4"
Exterior Width	96"
Interior Height	77"
Interior Width	91.25"

Capacities

Fuel	55 Gal.
Black	30 Gal.
Grey	38 Gal.
Fresh	38 Gal.
LP Gas Tank	42 Lbs.
Furnace	25,000 btu.
Water Heater	6 Gal.
Basement Storage	39.75 cu. ft.

MODEL 5291



Popular Options

- Driver Convenience Package (Ford Only)
- XL Upgrade Package (Tan & Green Only) (N/A 5211)
- V-8 6.0L Chevy Chassis (5211)
- 6.0L Ford Turbodiesel Chassis (5230, 5250)

- Generator (Onan 4.0 or Generac 4.0)
- Awning
- Hitch
- 24" Flat Screen TV
- DVD Player
- Rear Ladder

- Oak Dash (Ford only)
- Heated Remote Mirrors

- 6-Way Power Optima Leather Seats in Cockpit (Ford Only)

Coach-Net®

24 HR. EMERGENCY ROADSIDE ASSISTANCE

- One Year Coach-Net Membership
- Towing and Winching
- Flat Tire Change
- Mobile Mechanic
- Delivery of emergency fluids
- Jump Start / Battery Boost
- Lockout



GULF STREAM FACILITIES...

Located in the heart of the Amish country, the complex, along with Gulf Stream's affiliate, Fairmont Homes, Inc., covers over 400 acres and includes more than 1.5 million square feet of state-of-the-art manufacturing facilities. With over 20 years of manufacturing experience producing quality Recreational Vehicles, Gulf Stream is the leading manufacturer of high quality and high value RV products that are distributed through a partnership relation with independent dealers who are focused on meeting customer expectations.



Quality, Comfort, Innovation

Your family and friends will feel safe and comfortable wrapped in Gulf Stream's "Cradle of Strength". Comfort, Quietness and Insulation from the elements is what you will experience from Gulf Stream's "Tried and Tested" Motorhomes. Compare... and you will find the exceptional value of a Gulf Stream Motorhome.

GULF STREAM EXCEPTIONAL VALUE...

Post Office Box 1005
NAPPANEE, IN 46550
• YOUR GULF STREAM COACH DEALER •



VISIT
WWW.GULFSTREAMRV.COM

**FOR MORE DETAILED INFORMATION...
OR CALL 1-800-765-8787-EXT. 3288**

For more information and available options, contact your local Gulf Stream dealer, www.gulfstreamrv.com or Gulf Stream Coach, Inc. Gulf Stream Coach, Inc., reserves the right to make changes in prices, colors, materials, components and specifications and to discontinue models at any time without notice or obligation. Gulf Stream Coach, Inc., assumes no responsibility for any errors in this print reproduction of specifications or floorplans in this brochure. Photographs may show equipment or items that are optional and are not included in the purchase price of the vehicle. Test drive and review a current model at your nearest Gulf Stream dealer. © 2002 Gulf Stream Coach, Inc., Nappanee, IN. The BEST BUY SEAL is a registered trademark of Consumers Digest Communications, LLC, used under license.