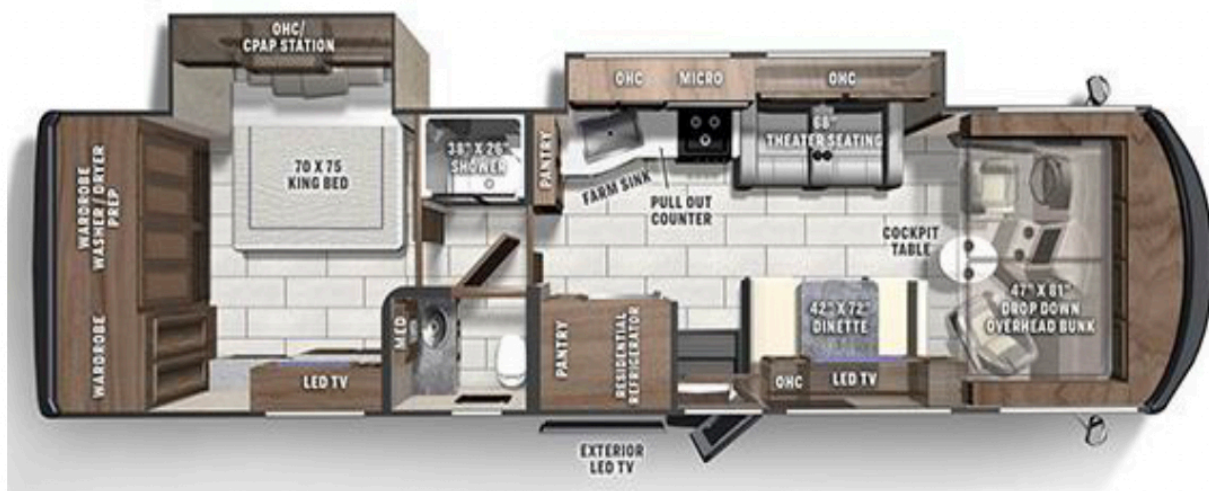




339DS- SRS

340XCS



- 340 HP DIESEL PUSHER
- AIR SUSPENSION & AIR BRAKES
- 1-PIECE FIBERGLASS ROOF
- AZDEL NOBLE SELECT SIDEWALL W/ 3 YEAR WARRANTY
- 6.0 DIESEL GEN W/ AUTO GEN START (TEMP, TIME & VOLTAGE)
- GENERATOR SLIDE TRAY
- 17' BUS MIRRORS
- ALUMINUM SLAM LATCH DOORS W 1.5" BULB SEAL
- 8,000 LB HITCH
- 40" EXTERIOR TV
- LP QUICK CONNECT
- FLAT FLOOR THROUGHOUT
- KING BED
- COACH-PAP STATION
- PANTRY-PLUS KITCHEN STORAGE
- PASSENGER COCKPIT TABLE
- MCD SOLAR / PRIVACY SHADES THROUGHOUT
- RESIDENTIAL REFRIGERATOR
- LP STAINLESS STOVE AND OVEN
- FIBERGLASS SHOWER
- 100W SOLAR PANEL
- FRONT DROP DOWN BUNK

CLASS A DIESEL	339DS
CUMMINS ISB 6.7L ENGINE	340HP@2600 RPM
ALLISON TRANSMISSION	2100MH
WHEEL BASE	208"
GVWR	26,000 lbs.
GCWR	30,000 lbs
GAWR FRONT	10,410 lbs.
GAWR REAR	17,500 lbs.
FUEL CAPACITY	90 gal
LP GAS CAPACITY (gallons)	20 gal
FURNACE (BTUs)	(2) 20,000
EXTERIOR LENGTH (w/o ladder)	36' 3"
EXTERIOR HEIGHT (with AC)	12' 10"
EXTERIOR WIDTH	102"
FRESH WATER	72 gal
GREY WATER	45 gal
BLACK WATER	45 gal
WATER HEATER	10 gal
AWNING SIZE	18
EXTERIOR STORAGE	130 sq ft
TOW HITCH	8,000 lbs



www.lewisrvcenter.com
 1600 E Reno Ave. Oklahoma City OK, 73117
 (405) 232-1800 call or text