



# Esteem XL



Serial #: 1JSNECBP6S12F8053  
 Model: 33F ESTEEM XL MHC  
 VIN#: 1FDFF6LT6RDA31790  
 Model Year: 2025 Dealer Name: LEO'S VACATION CENTER, INC

729 ROUTE 3 NORTH  
 GAMBRILLS, MD 21054  
 USA

## Manufacturer's Suggested Retail Price

\$301,224.00

TOTAL AMOUNT DOES NOT INCLUDE STATE AND LOCAL TAXES OR LICENSE FEES. THE PRICE SHOWN ABOVE MAY OR MAY NOT BE REPRESENTATIVE OF THE ACTUAL SELLING PRICE OF SIMILAR RECREATIONAL VEHICLES IN YOUR AREA.

### Standard Equipment

### Optional Equipment

THE FOLLOWING ITEMS ARE STANDARD ON THIS MODEL

OPTIONAL EQUIPMENT INSTALLED ON THIS VEHICLE BY MANUFACTURER

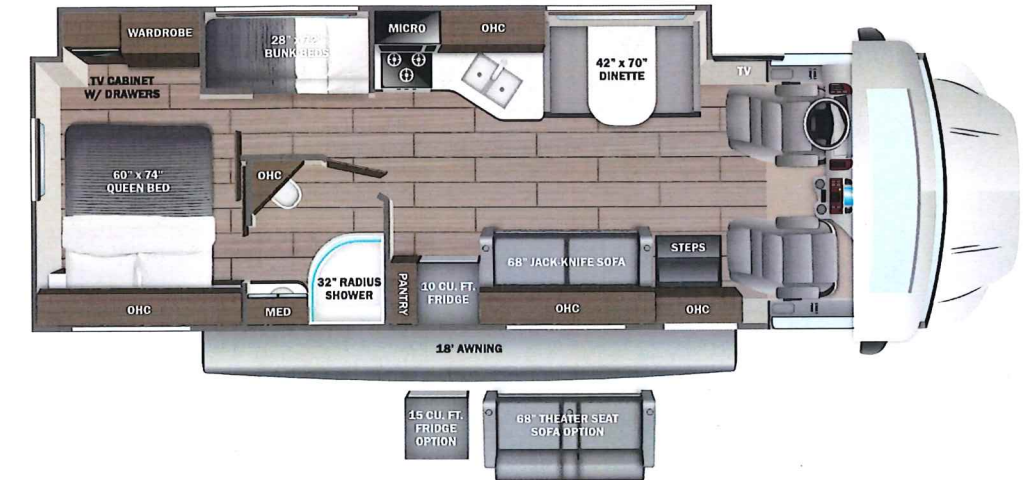
- STANDARD EXTERIOR EQUIPMENT**
- Ford® F550 4X4 chassis (30M, 32U)
  - Ford® F600 4X4 chassis (33F)
  - GVWR - 19,500 lb. (30M, 32U); 22,000 lb. (33F)
  - GCWR - 31,500 lb. (30M, 32U); 34,000 lb. (33F)
  - 6.7L Power Stroke V8 Turbo diesel engine with block heater - 330 HP at 2,200 RPM and 950 ft. lb. torque at 1,800 RPM
  - 10-speed automatic transmission
  - 332-amp alternator
  - G-rated tires- 225/70R19.5 (30M, 32U)
  - All-terrain tires - 245/70R19.5 (33F)
  - Steel wheels with matte black liners
  - 12,000 lb. rear hitch receiver
  - 7-pin plug
  - Hellwig® helper springs (30M, 32U)
  - Ford® AdvanceTrac® with RSC® (roll stability control) and trailer sway control
  - Integrated trailer brake controller
  - Single chassis battery (750 CCA 78 AH)
  - Dual fuel tanks (26.5 gal. and 40 gal.)
  - 2 in. rear lift
  - TuffShell™ vacuum-bond laminated roof, floor and sidewalls
  - Bead-foam insulation (R-24 max roof, R-9 max floor, R-5 max walls)
  - One-piece, seamless, fiberglass roof
  - Fiberglass exterior walls with partial paint and vinyl graphics
  - Entrance door with industry's largest travel-view window
  - Electric-powered entrance step with integrated house battery compartment
  - Slideout awning(s)
  - Exterior LED HD Smart TV with (2) high-output, marine-grade exterior speakers
  - Lockable storage compartments with slam latches
  - Third brake light
  - Roof ladder
  - Prep for satellite dish
  - Cable TV hookup with RG-6 coax
  - Winegard 2.0 Wi-Fi/4G antenna
  - (2) 6V AGM house batteries
  - Transfer switch with reverse polarity protection
  - 50-amp electrical service
  - Detachable power cord
  - 16.5 gal. propane tank (56 lb.)
  - LP quick-connect hookup
  - Heated holding tanks (12V pads)
  - Exterior utility center
  - Winterization drain system
  - Black tank flush
  - Outside shower
  - 12V demand water pump
  - Water filtration system
- CUSTOMER VALUE PACKAGE**
- E-Z Drive™ Elite: Computer-balanced driveshaft, heavy-duty rear stabilizer bar, standard front stabilizer bar and Hellwig® helper springs
  - One-piece, seamless fiberglass front cap
  - Automotive-bonded panoramic window in front cap with power shade
  - Automatic hydraulic leveling jacks
  - Frameless windows
  - Electric patio awning with LED lights
  - 6,000W generator with auto-gen start
  - 2,000W inverter
  - 15,000 BTU A/C with heat pump
  - 200W solar panel with dual controller and second house battery
  - Firefly Multiplex system - wall-mounted touchscreen and mobile app for total coach control
  - LED HD Smart TV in living area

- STANDARD INTERIOR EQUIPMENT**
- Ford® SYNC® 4 infotainment center with Apple® CarPlay™ and Android Auto™
  - Audible lane departure warning
  - Pre-Collision Assist® with automatic emergency braking (AEB)
  - SOS Post Crash Alert System™
  - Driver and passenger airbags
  - Safety Canopy® system with roll-fold side-curtain airbags
  - Remote keyless entry and perimeter anti-theft alarm
  - SecuriLock® anti-theft ignition
  - Quad dual-beam halogen headlights
  - Rainlamp wiper activated headlights
  - Remote start
  - Adjustable gas/brake pedals
  - Cruise control
  - Power windows and door locks
  - Auxiliary start switch
  - 8-way power driver seat
  - Tilt steering wheel
  - Custom-molded ABS surround in cab-over area
  - Overhead bunk with 750 lb. capacity and safety net
  - Privacy curtain for cab area
  - 84 in. interior ceiling height with padded vinyl ceiling
  - High-intensity recessed LED ceiling lights
  - LED-lit fascia
  - Hardwood cabinet doors and drawer fronts
  - Deluxe hidden cabinet hinges
  - Ball-bearing drawer guides
  - Blackout night roller shades
  - 30,000 BTU auto-ignition furnace
  - 10 gal. gas/electric water heater
  - JBL® audio system
  - U-shaped dinette (30M)
  - Entegra-exclusive, easy-operation legless dinette table (32U,33F)
  - 2-point lap safety belts in all designated seating locations
  - Car seat tethers (select floorplans)
  - 10 cu. ft. 12V refrigerator
  - Furrion® all-in-one cooktop and oven
  - Residential-size microwave
  - Recessed stainless steel kitchen sink with sink covers
  - Solid-surface kitchen countertops
  - Decorative kitchen backsplash
  - Pop-up charging station in kitchen with 120V outlets and USB ports
  - Queen-size power Murphy Bed (30M)
  - Queen-size bed with bedspread and nightstands (33F)
  - Walk-around, king-size bed with bedspread and nightstands (32U)
  - USB port and wireless charging in nightstands
  - Large wardrobes
  - Bunks with industry-exclusive 300 lb. capacity each (33F)
  - Wall-mounted tablet holder in each bunk (33F)
  - Shower with decorative surround, glass door, skylight and light
  - Recessed stainless steel bathroom sink
  - Toilet with foot flush
  - Powered roof vent in bathroom with wall switch
  - Smoke alarm
  - Carbon monoxide detector
  - Fire extinguisher

- Base price 274,050.00
- ABLAZE SILVER PARTIAL PAINT n/c
- STILLWATER DECOR n/c
- USA STANDARDS n/c
- CUSTOMER VALUE PACKAGE 25,493.00
- NO BEDROOM TV n/c
- DUAL ACS 1,193.00
- 10 CU. FT. 12V REFRIGERATOR n/c
- STEEL RIMS n/c
- FOLDING WINDSHIELD SUN SHADE 488.00
- SOFA n/c

UNIT TOTAL **301,224.00**

DEALER INSTALLED OPTIONS



### DIMENSIONS

Exterior height:.....150.00"  
 Exterior width:.....100.00"

### CAPACITIES

Fresh water tank (gals.):...53.00  
 Gray water tank (gals.):....31.00  
 Black water/toilet tank (gals.):.....31.00  
 Propane (lbs.):.....83  
 Propane (gals.):.....19  
 Water heater (gals.):.....10.00

### TIRES

Tire size (front):.....245/70R19.5G  
 Tire size (mid):.....  
 Tire size (rear):.....245/70R19.5G

\*\*\*Some dimensions may be rounded and may vary from the actual dimensions\*\*\*  
 \*\*\*Weights may be estimated calculations and may vary from the actual weight - refer to the vehicle weight labels for actual weights\*\*\*  
 Floorplans, features and specifications are subject to change without notice.