

Accolade



Serial #: 1JSNECBU8S1HM8071
 Model: 37M ACCOLADE MHC
 VIN#: 4UZADVFC0SCWB5566
 Model Year: 2025 Dealer Name: LEO'S VACATION CENTER, INC
 729 ROUTE 3 NORTH
 GAMBRILLS, MD 21054
 USA

Manufacturer's Suggested Retail Price

11245566
\$370,216.00

TOTAL AMOUNT DOES NOT INCLUDE STATE AND LOCAL TAXES OR LICENSE FEES. THE PRICE SHOWN ABOVE MAY OR MAY NOT BE REPRESENTATIVE OF THE ACTUAL SELLING PRICE OF SIMILAR RECREATIONAL VEHICLES IN YOUR AREA.

Standard Equipment

THE FOLLOWING ITEMS ARE STANDARD ON THIS MODEL

STANDARD EXTERIOR EQUIPMENT

- Freightliner® S2RV Plus chassis
- GVWR - 31,000 lb.
- GCWR - 43,000 lb.
- Cummins® ISB 6.7L 360 HP diesel engine with 800 ft.-lb. torque
- Allison® 3000 MH automatic transmission
- 185-amp alternator
- G-rated highway tires - 275/80R22.5
- Alcoa® aluminum rims
- Engine exhaust brake
- 12,000 lb. hitch with 1,200 lb. tongue capacity
- 7-pin plug
- Dual 12V chassis batteries
- 100 gal. fuel tank
- 10 gal. DEF tank
- TuffShell™ vacuum-bond laminated roof, floor and sidewalls
- Bead-foam insulation (R-24 max roof, R-9 max floor, R-8 max walls)
- One-piece, seamless, crowned fiberglass roof
- Premium Sikkens full-body paint
- Automatic hydraulic leveling jacks
- Entrance door with industry's largest travel-view window
- Electric-powered entrance steps
- Slideout cover awnings
- Exterior entertainment center with outside speakers and LED HD Smart TV mounted on swivel bracket
- Winegard® In-motion satellite dish
- Carpeted, full pass-through storage compartments with Keyed Alike lockable slam-latch doors
- Thetford® Sani-Con Turbo macerator system
- Third brake light
- Roof ladder
- Cable TV hookup with RG-6 coax and video selector switch
- Winegard 2.0 Wi-Fi/4G antenna
- 8,000W diesel generator with auto-gen start
- 200W solar panel with dual controller
- (4) 6V AGM (220Ah) house batteries on slideout tray
- Transfer switch with reverse polarity protection
- 24.5 gal. propane tank (83 lb.)
- LP quick-connect hookup
- Exterior utility center
- Winterization drain system
- Black tank flush
- Outside shower
- 12V demand water pump
- Water filtration system

STANDARD INTERIOR EQUIPMENT

- 6-way power driver and passenger seats
- Deluxe heated, remote-controlled, side-view mirrors
- Tilt steering wheel
- Cruise control
- Detroit automatic wipers/headlights
- Power windows and door locks
- Auxiliary start switch
- Custom-molded ABS surround in cab-over area
- Overhead bunk with 750 lb. capacity
- Privacy curtains for cab area
- Firefly Multiplex system - wall-mounted touchscreen and mobile app for total coach control
- 84 in. interior ceiling height with padded vinyl ceiling
- Integrated day/night cassette shades
- High-intensity recessed LED ceiling lights
- LED-lit fascia
- Vinyl plank flooring
- Hardwood cabinet doors and drawer fronts
- Deluxe hidden cabinet hinges
- Ball-bearing drawer guides
- 30,000 BTU auto-ignition furnace
- 10 gal. gas/electric water heater
- Electric fireplace
- Entegra-exclusive, easy-operation legless dinette table
- 2-point lap safety belts in all designated seating locations
- Car seat tethers (select floorplans)
- LED HD Smart TV in living area
- JBL® audio system
- Smoke alarm
- Carbon monoxide detector
- Fire extinguisher
- Wood-framed kitchen window with spice cabinets
- 2-burner induction cooktop
- LED-lit, solid-surface kitchen countertops with recessed stainless steel sink and sink covers
- Walk-around, king-size bed with power head lift, bedspread and nightstands
- USB port and wireless charging in nightstands
- Under-bed storage (select models)
- LED HD Smart TV in bedroom
- Large wardrobes
- Bunks with industry-exclusive 300 lb. capacity each (37L)
- Wall-mounted tablet holder in each bunk (37L)
- Shower with decorative surround, glass door, skylight and light
- Porcelain toilet with foot flush
- Recessed stainless-steel bathroom sink
- Powered roof vent in bathroom with wall switch

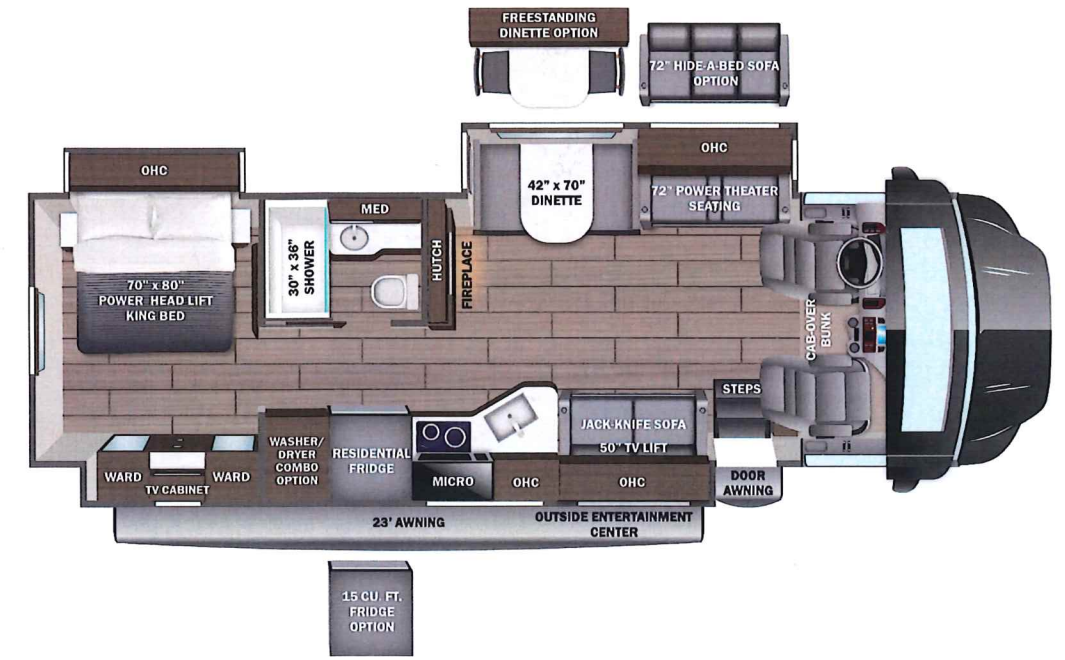
Optional Equipment

OPTIONAL EQUIPMENT INSTALLED ON THIS VEHICLE BY MANUFACTURER

| | |
|--|------------|
| Base price | 361,800.00 |
| FARMHOUSE DECOR | 443.00 |
| SUNDIAL FULL PAINT | 30.00 |
| USA STANDARDS | n/c |
| 25 FR S2RV 31000 279" | n/c |
| 360 SA15 | n/c |
| CUSTOMER VALUE PACKAGE | 6,750.00 |
| RESIDENTIAL REFRIGERATOR | n/c |
| NO WASHER/DRYER | n/c |
| IN MOTION DISH SATELLITE SYSTEM | n/c |
| WINEGARD 2.0 CONNECT SLIDEOUT TRAY W/ELECTRIC COOLER IN BASEMENT | 1,193.00 |
| NON-BLACKOUT BOOTH DINETTE | n/c |
| POWER THEATER SEATING SOFA | n/c |

UNIT TOTAL **370,216.00**

DEALER INSTALLED OPTIONS



DIMENSIONS

Exterior height:.....160.00"
 Exterior width:.....101.00"

TIRES

Tire size (front):.....275/80R22.5G
 Tire size (mid):.....
 Tire size (rear):.....275/80R22.5G

CAPACITIES

Fresh water tank (gals.):...72.00
 Gray water tank (gals.):....81.00
 Black water/toilet tank (gals.):.....50.00
 Propane (lbs.):.....83
 Propane (gals.):.....19
 Water heater (gals.):.....10.00

Some dimensions may be rounded and may vary from the actual dimensions
 Weights may be estimated calculations and may vary from the actual weight - refer to the vehicle weight labels for actual weights
 Floorplans, features and specifications are subject to change without notice.