



Open Range Roamer



Serial #: 58TCM0BU5S3JC3061
 Model: 354MBH OPEN RANGE ROAMER FW

Model Year: 2025 Dealer Name: LEO'S VACATION CENTER, INC
 729 ROUTE 3 NORTH
 GAMBRILLS, MD 21054
 USA

Manufacturer's Suggested Retail Price

10243061
 \$93,985.00

TOTAL AMOUNT DOES NOT INCLUDE STATE AND LOCAL TAXES OR LICENSE FEES. THE PRICE SHOWN ABOVE MAY OR MAY NOT BE REPRESENTATIVE OF THE ACTUAL SELLING PRICE OF SIMILAR RECREATIONAL VEHICLES IN YOUR AREA.

Standard Equipment

THE FOLLOWING ITEMS ARE STANDARD ON THIS MODEL AT NO EXTRA CHARGE

- EXTERIOR**
- 100" wide body frame
 - 2" receiver hitch
 - 3-20 lb. LP bottles
 - 50 amp service
 - ACCU-SLIDE™ slide system (42" deep 4-corner compression)
 - Battery disconnect switch
 - Brass hanger bushings with wet bolts
 - Equa-Flex® axle suspension
 - Exterior grill/griddle quick connect port
 - Laminated block foam floor
 - LevelLoc™ - 4 point automatic leveling with JT's Strong Arms®
 - PVC roofing membrane (limited lifetime warranty)
 - Rear roof access ladder
 - Self-adjusting electric brakes
 - Spare tire
 - TuffShell™ -vacuum bonded laminated construction, reinforced with heavy-duty fiberglass and welded aluminum frames
 - Xtend Solar I Package (1-200 watt solar panel with 30 amp controller)
- FOUR SEASON PACKAGE (Mandatory)**
- Double insulated baggage doors
 - Ducted heat to underbelly with cold air return
 - Enclosed cable operated gate valves
 - Enclosed exterior docking station with black tank flush
 - Heated and enclosed underbelly
 - High performance furnace
 - R-38 reflective foil insulation in ceiling and underbelly
 - R-9 block foam insulation in sidewalls

- INTERIOR**
- 17 cu. ft. 12V refrigerator
 - 60" x 80" residential queen bed with adjustable power base
 - 75 lb. ball bearing drawer guides
 - Cable and satellite prep
 - Flush floor slides with residential vinyl flooring
 - Glass Residential Shower Door
 - Hardwood cabinet doors
 - Hardwood slideout fascia
 - Large oven and 3-burner range with flush mount glass cover
 - LED interior lighting
 - Observation camera prep
 - Pet/Child Screen Guard on Screen Door
 - Residential microwave
 - Roller blackout night shades
 - Theater seating with power recline
 - Wall controlled power vent (kitchen/living room area)
 - Washer/dryer prep
- EXECUTIVE PACKAGE (Mandatory)**
- 15,000 BTU roof mounted A/C
 - Cutting board and sink strainer
 - Dome style digital TV antenna with Wi-Fi prep
 - Interior convenience center light
 - Keyed-Alike® entry and baggage doors
 - Painted fiberglass front cap with LED lighting and automotive tinted window
 - Power awning with LED lighting
 - Quick recovery gas/electric water heater
 - Quick release fresh water drain
 - Residential high-rise faucet with pull-down sprayer
 - Single basin stainless steel under-mount kitchen sink
 - Smart Entertainment HDTV with Bluetooth®, Soundbar and Built in Stereo
 - Solid swing-down entry steps
 - Solid-surface kitchen countertops
 - Stainless steel appliances
 - TravelLINK® - Smart RV system that allows for Bluetooth® control of awnings, lighting, slideouts, heating, cooling and more
 - USB/12V charging port

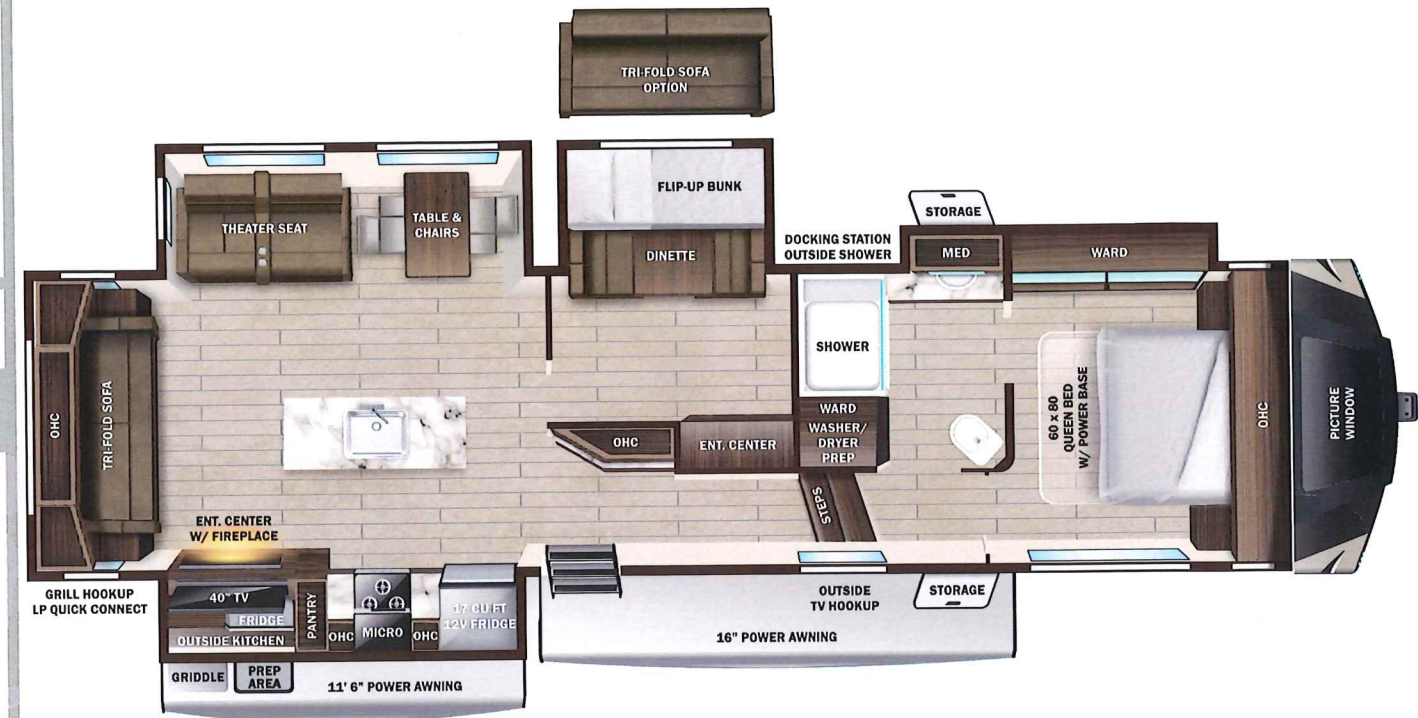
Optional Equipment

OPTIONAL EQUIPMENT INSTALLED ON THIS VEHICLE BY MANUFACTURER

Base price	83,993.00
USA STANDARDS	n/c
EXECUTIVE PACKAGE	6,000.00
FOUR SEASONS PROTECTION PACKAGE	750.00
2ND AC 15K BTU DUCTED MAIN BEDROOM POWER FAN VENT WALL CONTROL BATHROOM ON DEMAND HOT WATER HEATER	375.00
GENERATOR PREP - LP	893.00
NO BEDROOM TV	n/c
WINDOWS STANDARD	n/c
TRI-FOLD SOFA BUNK ROOM	638.00

UNIT TOTAL **93,985.00**

DEALER INSTALLED OPTIONS



UVW
 11647 lbs

Sleeps

Length
 38' 11.75"

DIMENSIONS

Exterior height:.....159.25"
 Exterior width:.....100.00"

WEIGHTS

GVWR:.....13500
 GAWR (front):.....6000
 GAWR (rear):.....6000
 Approx. Gross Cargo Carrying Capacity(GCCC):.....1853

TIRES

Tire size (front):.....ST235/80R16E
 Tire size (mid):.....
 Tire size (rear):.....ST235/80R16E

CAPACITIES

Fresh water tank (gals.):...75.00
 Gray water tank (gals.):...97.00
 Black water/toilet tank (gals):.....40.00
 Propane (lbs.):.....60
 Propane (gals.):.....14
 Water heater (gals.):.....6.00

SEATING & SLEEPING

Some dimensions may be rounded and may vary from the actual dimensions
 Weights may be estimated calculations and may vary from the actual weight - refer to the vehicle weight labels for actual weights
 Floorplans, features and specifications are subject to change without notice.

