



Highland RIDGE RV

Open Range



Serial #: 58TBM0AKXS1533057
Model: 188BHS OPEN RANGE TT

Model Year: 2025 Dealer Name: LEO'S VACATION CENTER, INC
729 ROUTE 3 NORTH
GAMBRILLS, MD 21054
USA

Manufacturer's Suggested Retail Price

\$33,227.00

10243057

TOTAL AMOUNT DOES NOT INCLUDE STATE AND LOCAL TAXES OR LICENSE FEES. THE PRICE SHOWN ABOVE MAY OR MAY NOT BE REPRESENTATIVE OF THE ACTUAL SELLING PRICE OF SIMILAR RECREATIONAL VEHICLES IN YOUR AREA.

Standard Equipment

THE FOLLOWING ITEMS ARE STANDARD ON THIS MODEL AT NO EXTRA CHARGE

- EXTERIOR**
- 120 GFCI protected receptacle
 - 5/8" main floor decking
 - 96" exterior width
 - Black front diamond plate protection
 - Detachable power cords
 - Exterior docking center (dual axle models)
 - Fiberglass insulation
 - Flexible LP lines
 - Galvanized wheel wells
 - Grab handle
 - In-frame battery rack
 - Magnetic baggage door catches
 - Magnum Roof™ system
 - PVC roofing membrane (limited lifetime warranty)
 - Rain guttering with molded drip spouts
 - Rear camera prep
 - Safety bumper with drain hose carrier and end caps
 - Self-adjusting electric brakes and E-Z Lube® axles
 - Thermal Seal- enclosed, insulated, and heated underbelly and fully insulated roof with a PVC roofing membrane (dual axle models)
 - Tinted safety-glass windows throughout

- INTERIOR**
- 10 cu. ft. 12V Refrigerator
 - 75 lb. ball bearing drawer guides
 - 81" interior height
 - Ceiling mount bluetooth® speaker
 - Flush floor slides with residential vinyl flooring (select models)
 - Foot flush toilet
 - Hidden hinge cabinet door hinges
 - LED interior lighting
 - Magnet cabinet catches
 - Pleated blackout night shades
 - Pocket-screwed lumbercore cabinet construction
 - Pressed membrane kitchen countertops
 - Range hood
 - Residential high-rise kitchen faucet
 - Single basin under-mount kitchen sink
 - Solid hardwood cabinet doors
 - Solid hardwood drawer fronts
 - Storage below main bed
 - USB charging port at beds and bunks

- CUSTOMER CONVENIENCE PACKAGE (Mandatory)**
- 13,500 BTU roof mounted A/C
 - 17" oven (dual axle models)
 - 2-burner range with glass cover (single axle models)
 - 3-burner range with glass cover (dual axle models)
 - Dome style digital TV antenna
 - Friction hinge entrance door with window and shade prep
 - Gas/electric water heater
 - Microwave
 - Nitrogen filled radial tires
 - Powered awning with LED lighting
 - Powered bathroom vent
 - Residential vinyl flooring throughout
 - Solid swing down step (main)
 - Stabilizer jacks (4-dual axle models, 2-single axle models)
 - Water heater bypass
 - Xtend Solar I Package (200 watt solar panel with 30 amp controller)

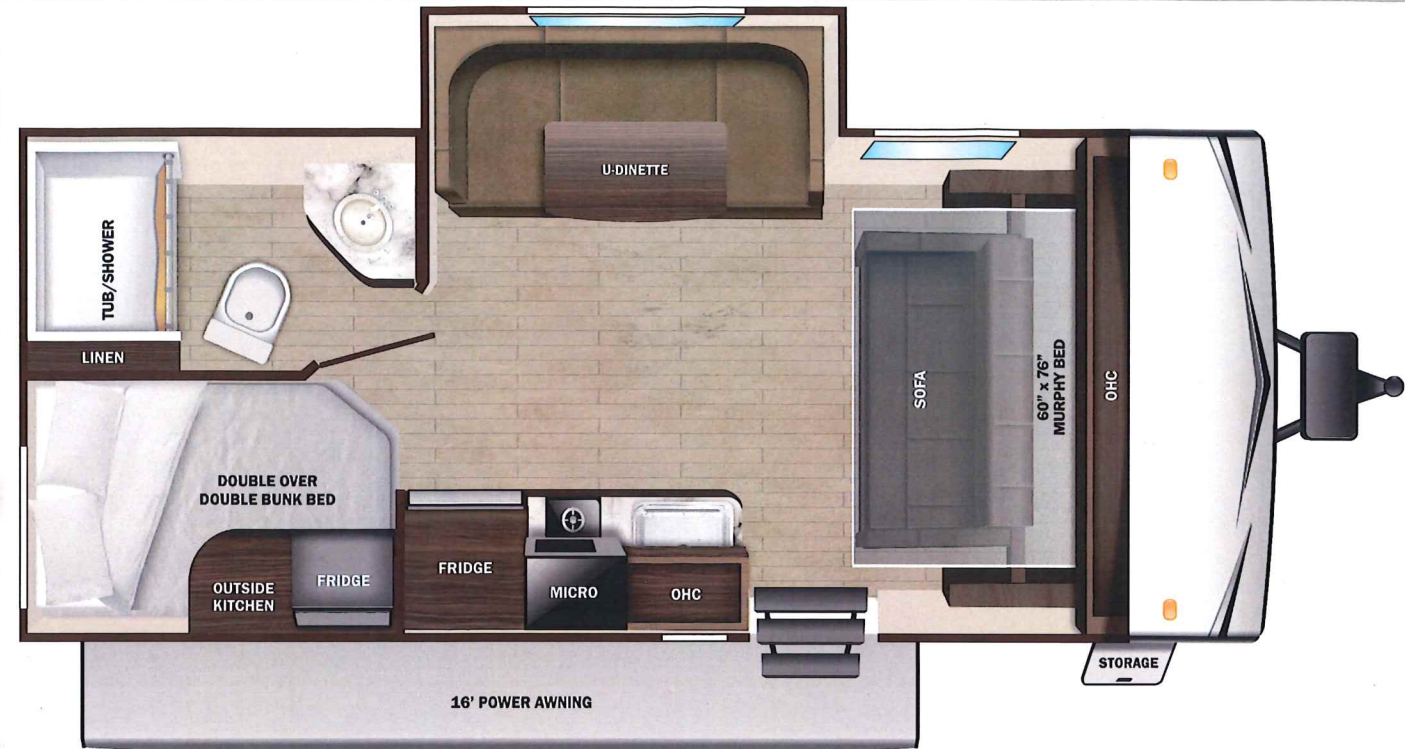
Optional Equipment

OPTIONAL EQUIPMENT INSTALLED ON THIS VEHICLE BY MANUFACTURER

- Base price 28,035.00
- USA STANDARDS n/c
- CUSTOMER CONVENIENCE PACKAGE 3,743.00
- FIBERGLASS SIDEWALL 818.00
- ALUMINUM RIMS (15") 338.00
- SPARE TIRE & CARRIER 293.00

UNIT TOTAL **33,227.00**

DEALER INSTALLED OPTIONS



UVW
4612 lbs



Sleeps



Length
23' 9.75"

DIMENSIONS

Exterior height:.....125.75"

Exterior width:.....96.00"

WEIGHTS

GVWR:.....5675

GAWR (front):.....5145

GAWR (rear):.....0

Approx. Gross Cargo Carrying Capacity(GCCC):.....1063

TIRES

Tire size (front):.....ST225/75R15D

Tire size (mid):.....

Tire size (rear):.....

CAPACITIES

Fresh water tank (gals.):...20.00

Gray water tank (gals.):...40.00

Black water/toilet tank (gals.):.....40.00

Propane (lbs.):.....20

Propane (gals.):.....4

Water heater (gals.):.....6.00

SEATING & SLEEPING

Some dimensions may be rounded and may vary from the actual dimensions
Weights may be estimated calculations and may vary from the actual weight - refer to the vehicle weight labels for actual weights
Floorplans, features and specifications are subject to change without notice.

