

Highland RIDGE RV

Open Range



Serial #: 58TCM0BV6P3B33055
Model: 379FBS OPEN RANGE FW

Model Year: 2023 Dealer Name: LEO'S VACATION CENTER, INC
729 ROUTE 3 NORTH
GAMBRILLS, MD 21054
USA

Manufacturer's Suggested Retail Price

09223055
\$119,558.00

TOTAL AMOUNT DOES NOT INCLUDE STATE AND LOCAL TAXES OR LICENSE FEES. THE PRICE SHOWN ABOVE MAY OR MAY NOT BE REPRESENTATIVE OF THE ACTUAL SELLING PRICE OF SIMILAR RECREATIONAL VEHICLES IN YOUR AREA.

Standard Equipment

THE FOLLOWING ITEMS ARE STANDARD ON THIS MODEL AT NO EXTRA CHARGE

- EXTERIOR**
- 100" wide body frame
 - 2" receiver hitch
 - 3-20 lb. LP bottles
 - 50 amp service
 - ACCU-SLIDE™ slide system (42" deep 4-corner compression)
 - Battery disconnect switch
 - Brass hanger bushings with wet bolts
 - Equa-Flex® axle suspension
 - Exterior grill/griddle quick connect port
 - Frameless windows
 - Laminated block foam floor
 - LevelLoc™ - 4 or 6 point automatic leveling with JT's Strong Arms®
 - Marine grade exterior speakers (2)
 - PVC roofing membrane (limited lifetime warranty)
 - Rear roof access ladder
 - Self-adjusting electric brakes
 - Spare tire
 - TuffShell™ - vacuum bonded laminated construction, reinforced with heavy-duty fiberglass and welded aluminum frames

- FOUR SEASON PACKAGE (Mandatory)**
- Double insulated baggage doors
 - Ducted heat to underbelly with cold air return
 - Enclosed cable operated gate valves
 - Enclosed exterior docking station with black tank flush
 - Heated and enclosed underbelly
 - High performance furnace
 - R-38 reflective foil insulation in ceiling and underbelly
 - R-9 block foam insulation in sidewalls

- INTERIOR**
- 21 cu. ft. residential refrigerator
 - 60" x 80" residential queen bed with storage below
 - 75 lb. ball bearing drawer guides
 - Cable and satellite prep
 - Flush floor slides with residential vinyl flooring
 - Glass shower door
 - Hardwood ceiling soffit
 - Hardwood slideout fascia
 - Hardwood valances
 - Large freestanding oven and 4-burner range
 - LED interior lighting
 - One-piece fiberglass shower
 - Raised panel hardwood cabinet doors
 - Residential convection microwave
 - Roller day and night shades
 - Table and chairs
 - Theater seating with heat and massage
 - USB ports in master bedroom
 - VoiceLINK voice command system- controls lighting, heating and cooling along with TravelLINK
 - Wall controlled power vent (kitchen/living room area)
 - Washer/dryer prep

- EXECUTIVE PACKAGE (Mandatory)**
- 13,500 BTU A/C with quiet residential return air-bedroom
 - 15,000 BTU A/C with quiet residential return air-main living
 - AM/FM/HDMI/USB/AUX Bluetooth® sound bar stereo with outdoor zoned speakers
 - Cutting board and sink strainer
 - Dome style digital TV antenna with Wi-Fi prep
 - Interior convenience center light
 - Keyed-Alike® entry and baggage doors
 - LED HDTV
 - Motion sensor lighting in bedroom and hallway
 - Painted fiberglass front cap with LED lighting
 - Power awning with LED lighting
 - Quick recovery gas/electric water heater
 - Quick release fresh water drain
 - Residential high-rise faucet with pull-down sprayer
 - Single basin stainless steel under-mount kitchen sink
 - Solar prep
 - Solid swing-down entry steps
 - Solid-surface kitchen countertops
 - Stainless steel appliances
 - TravelINK™ - Smart RV system that allows for Bluetooth® control of awnings, lighting, slideouts, heating, cooling and more
 - USB/12V charging port

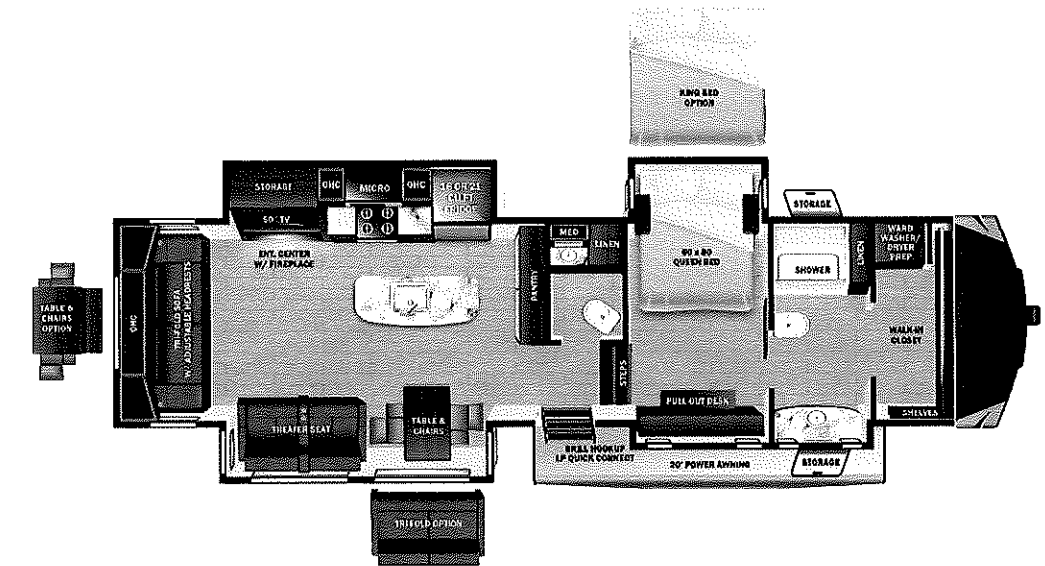
Optional Equipment

OPTIONAL EQUIPMENT INSTALLED ON THIS VEHICLE BY MANUFACTURER

Base price	109,605.00
USA Standards	n/c
Executive Package	6,000.00
Four Seasons Protection Package	750.00
RVIA	135.00
Heat Pump (on Main AC)	375.00
21 Cu. Ft. 110 Volt Refrigerator	n/c
No Generator Prep	n/c
No Bedroom TV	n/c
Windows Standard	n/c
Slideout Awning Covers	1,793.00
Power Fan Vent Wall Control (Bathroom)	375.00
No Pin Box	n/c
Rear Sofa	n/c
King Bed	525.00

UNIT TOTAL **119,558.00**

DEALER INSTALLED OPTIONS



UVW
12770 lbs



Sleeps



Length
43' 0.69"

DIMENSIONS

Exterior height:.....156.88"

Exterior width:.....100.00"

WEIGHTS

GVWR:.....15500

GAWR (front):.....7000

GAWR (rear):.....7000

Approx. Gross Cargo Carrying Capacity(GCCC):.....2730

TIRES

Tire size (front):.....ST235/85R16F

Tire size (mid):.....

Tire size (rear):.....ST235/85R16F

CAPACITIES

Fresh water tank (gals.):...75.00

Gray water tank (gals.):...114.00

Black water/toilet tank (gals.):.....80.00

Propane (lbs.):.....60

Propane (gals.):.....14

Water heater (gals.):.....10.00

SEATING & SLEEPING

Some dimensions may be rounded and may vary from the actual dimensions

***Weights may be estimated calculations and may vary from the actual weight

- refer to the vehicle weight labels for actual weights***

Floorplans, features and specifications are subject to change without notice.

