

A white and grey East West Della Terra travel trailer is parked on a grassy field in a forest. The trailer has a large black awning extended over the front. The background shows a dense forest of evergreen trees and a mountain range under a blue sky with white clouds. The trailer features a door with a step, a window, and a storage compartment. The East West Della Terra logo is visible on the side of the trailer.

EAST WEST

EAST WEST
Della Terra

Della Terra
TRAVEL TRAILERS

MORE THAN AN RV...IT'S A WAY OF LIFE!

#GOEASTTOWEST



48" DINETTE, OVERHEAD STORAGE ABOVE SLIDE OUT, 81" INTERIOR CEILING HEIGHT, 10" CUBIC DOUBLE DOOR REFRIGERATOR



DESIGNER COUNTERTOPS, STAINLESS STEEL APPLIANCES, HIGH RISE FAUCET & UNDERMOUNT FARMHOUSE SINK



EXTENDED STORAGE DRAWERS UNDER DINETTE ON ROLLER GUIDES



LARGE SPACIOUS PANTRY



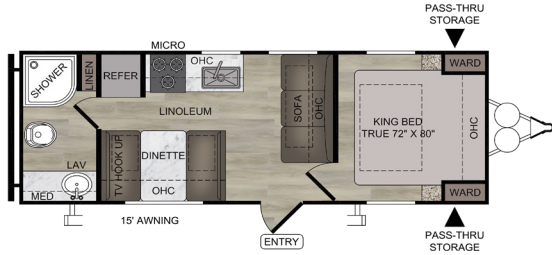
UNIVERSAL DOCKING STATION & FULLY FINISHED PASS-THRU STORAGE

**BEST BUILT
FAMILY PRODUCT**

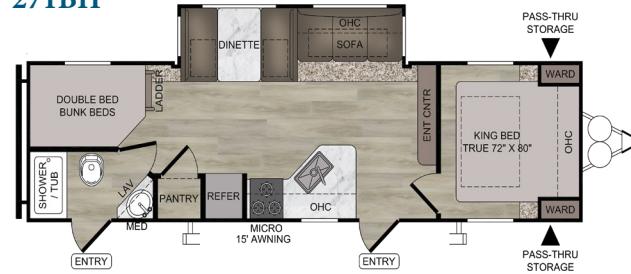
EAST WEST
Della Terra

<ol style="list-style-type: none"> 1. 2" X 3" FLOOR JOISTS 12" ON CENTER 2. 2" WALL CONSTRUCTION ON A 16" CENTER 3. ALUMINUM SIDING 4. 5" BOWED TRUSS ROOF RAFTERS 5. 5/8" TONGUE & GROOVE PLYWOOD FLOOR DECKING 6. ONE-PIECE SEAMLESS SUPERFLEX® ROOF (12 YEAR MANUFACTURER DEFECT WARRANTY) 7. R-7 FIBERGLASS INSULATION THROUGHOUT 	<ol style="list-style-type: none"> 8. 13 PLY CROSS MICRO-LAMINATED BEAM HEADER 9. ABOVE SLIDE OUT CHAMBERED CHASSIS 10. FULLY FINISHED PASS-THRU STORAGE 11. SMOOTH METAL SKIRTING 12. AUTOMOTIVE DEPOSITION COATED FRAME 13. DIAMOND PLATE ROCK GUARD 14. 3/8" ROOF DECKING (FULL WALK-ON ROOF) 15. ONE PIECE LINOLEUM FLOORING 	<ol style="list-style-type: none"> 16. TINTED SAFETY GLASS WINDOWS 17. FULLY ENCLOSED & HEATED UNDERBELLY WITH ANTI-PUNCTURE UNDERBELLY WRAP 18. ENCLOSED TANKS 19. LP BOTTLE COVER WITH EASY ACCESS 20. 15,000 BTU DUCTED ROOF, HIGH OUTPUT A/C WITH QUICK COOL 21. ELECTRIC POWER TONGUE JACK WITH LED LIGHT 22. ALUMINUM TRIPLE ENTRY STEPS
--	--	---

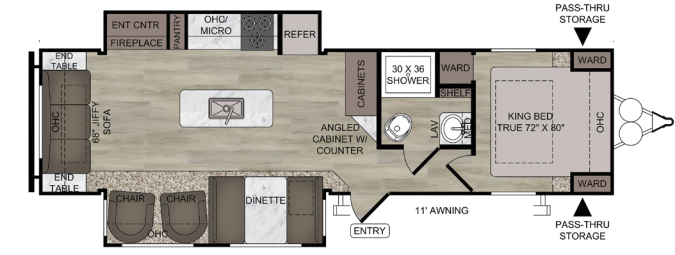
230RB



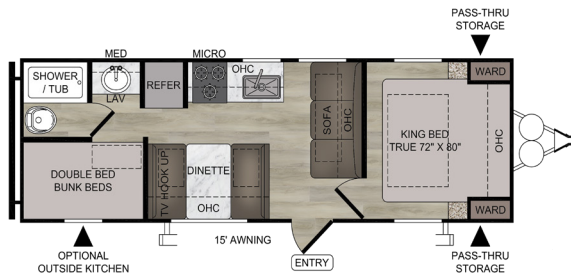
271BH



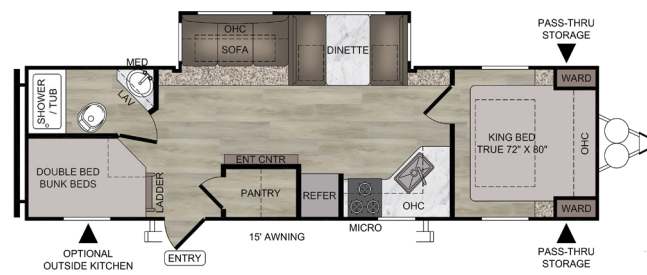
292MK



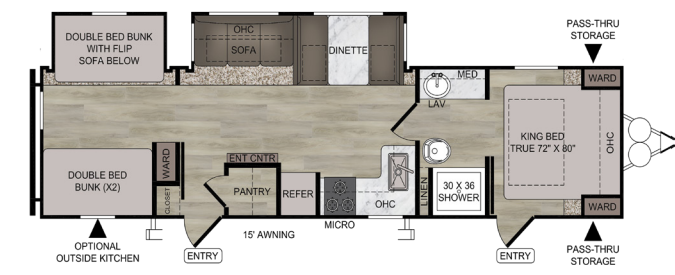
250BH



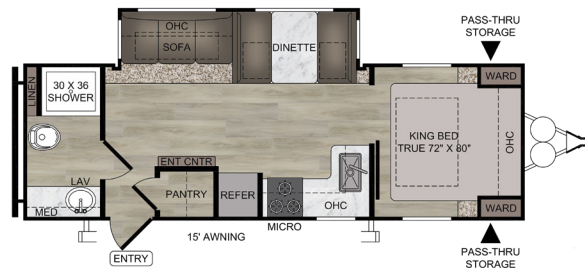
281BH



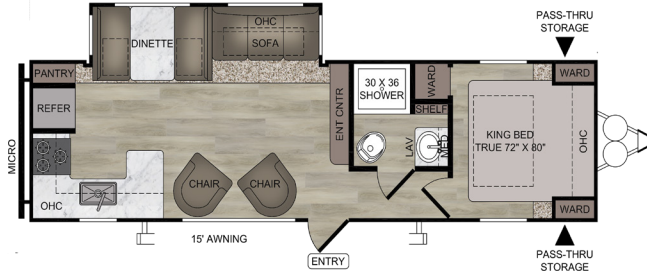
312BH



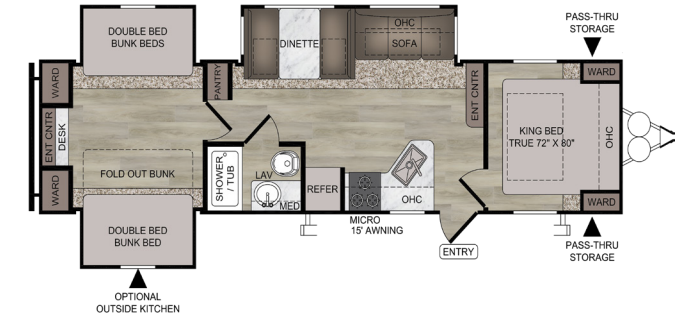
261RB



291RK



323QB



FLOORPLAN LEGEND

CAB	CABINET	MICRO	MICROWAVE
ENT CNTR	ENTERTAINMENT CENTER	OHC	OVERHEAD CABINET
LAV	BATHROOM SINK	REFER	REFRIGERATOR
MED	MEDICINE CABINET	WARD	WARDROBE

SPECIFICATION DEFINITIONS

GVWR (Gross Vehicle Weight Rating) - is the maximum permissible weight of the unit when fully loaded. It includes all weights, inclusive of all fluids, cargo, optional equipment and accessories. For safety and product performance do NOT exceed the GVWR.

GAWR (Gross Axle Weight Rating) - is the maximum permissible weight, including cargo, fluids, optional equipment and accessories that can be safely supported by a combination of all axles.

UVW (Unloaded Vehicle Weight)* - is the typical weight of the unit as manufactured at the factory. It includes all weight at the unit's axle(s) and tongue or pin and LP Gas. The UVW does not include cargo, fresh potable water, additional optional equipment or dealer installed accessories. *Estimated Average based on standard build optional equipment.

CCC (Cargo Carrying Capacity)** - is the amount of weight available for fresh potable water, cargo, additional optional equipment and accessories. CCC is equal to GVWR minus UVW. Available CCC should accommodate fresh potable water (8.3 lbs per gallon). Before filling the fresh water tank, empty the black and gray tanks to provide for more cargo capacity. **Estimated average based on standard build optional equipment.

Each Forest River RV is weighed at the manufacturing facility prior to shipping. A label identifying the unloaded vehicle weight of the actual unit and the cargo carrying capacity is applied to every Forest River RV prior to leaving our facilities. The load capacity of your unit is designated by weight, not by volume, so you cannot necessarily use all available space when loading your unit.

All information contained in this brochure is believed to be accurate at the time of publication. However, during the model year, it may be necessary to make revisions and Forest River, Inc., reserves the right to make all such changes without notice, including prices, colors, materials, equipment and specifications as well as the addition of new models and the discontinuance of models shown in this brochure. Therefore, please consult with your Forest River dealer and confirm the existence of any materials, design or specifications that are material to your purchase decision.

Floor Plan	DIMENSIONS				WEIGHT (LBS.)			TANKS (GALS.)			AWNING
	King Bed 72" X 80"	Length of Trailer with Hitch	Exterior Height	Interior Height	Unloaded Vehicle Weight* (UVW)	Dry Hitch Weight	Cargo Carrying Capacity (CCC)	Fresh Water Capacity	Grey Waste Water Capacity	Black Waste Water Capacity	
230 RB	KING	28'1"	10'8"	81"	4976	565	2589	55	30	30	15'
250 BH	KING	29'2"	10'8"	81"	5319	715	2396	55	30	30	15'
261 RB	KING	30'6"	11'2"	81"	6473	775	3102	55	60	30	15'
271 BH	KING	34'4"	11'0"	81"	6835	785	2750	55	60	30	15'
281 BH	KING	35'4"	11'2"	81"	6898	780	2682	55	60	30	15'
291 RK	KING	34'0"	11'2"	81"	6835	809	2774	55	60	30	15'
292 MK	KING	35'3"	11'3"	81"	7407	1063	2456	55	60	30	11'
312 BH	KING	38'0"	11'3"	81"	8623	935	2712	55	60	30	15'
323 QB	KING	37'5"	11'3"	81"	8745	896	2351	55	60	30	15'

*Weight represents an average on how most units are built excluding additional options

INTERIOR FEATURES

- MORTISE AND TENON SHAKER STYLE CABINETS
- 12-VOLT EXHAUST FAN AND LIGHT
- SHELVING IN OVERHEAD KITCHEN CABINETS
- WOOD DRAWERS WITH FURNITURE GRADE PLYWOOD SIDES
- TV & CABLE PREP IN LIVING ROOM AND BEDROOM
- FURNACE W/ DIGITAL THERMOSTAT
- STRUT LIFTED STORAGE UNDER MASTER BED
- INCREASED FOOT SPACE AT THE FOOT OF BED
- SOLID BEDROOM PRIVACY DOORS

SECURITY & SAFETY FEATURES

- LP LEAK, SMOKE & CARBON MONOXIDE DETECTORS
- FIRE EXTINGUISHER
- WELDED HEAVY DUTY SAFETY CHAINS
- ELECTRIC BRAKES (ALL WHEELS)
- GFCI RECEPTACLES
- ANSI 119.2 CERTIFIED
- MEETS ALL NATIONAL HIGHWAY ADMINISTRATIVE SPECIFICATIONS
- RVIA APPROVED PRODUCT

EXPLORE COMFORT PACKAGE

- 81" INTERIOR CEILING HEIGHT
- 10' CUBIC STAINLESS STEEL REFRIGERATOR
- SOLID BEDROOM PRIVACY DOOR
- CABLE/SATELLITE READY
- USB CHARGING STATIONS (BEDS, BUNKS, TABLES W/A)
- 3-BURNER RANGE W/ GLASS COVER & OVEN
- OVERHEAD CABINET STORAGE IN SLIDE OUT W/A
- INTERIOR LED LIGHTS
- SKYLIGHT ABOVE SHOWER/TUB
- 48" DINETTE W/A WITH PULLOUT STORAGE DRAWERS UNDERNEATH ON ROLLER GUIDES
- ABS TUB SURROUND & CABINET IN BATH W/A
- WINDOW VALENCE PACKAGE WITH NIGHT SHADES
- FOOT FLUSH TOILET
- DESIGNER COUNTERTOPS
- FURRION® 2 ZONE SOUND SYSTEM WITH BLUETOOTH & HDMI CONNECTIVITY
- 35,000 BTU SUBURBAN® FORCED AIR DSI FURNACE WITH DIGITAL THERMOSTAT
- EXTRA LARGE DINETTE PICTURE WINDOW
- UPGRADED SHAW® LINOLEUM FLOORING

ADVENTURE OUTDOOR PACKAGE

- UNIVERSAL DOCKING STATION W/ BATTERY DISCONNECT
- FULLY FINISHED PASS-THRU STORAGE
- FENDER SKIRT
- WATER HEATER BYPASS
- RADIAL TIRES
- ELECTRIC POWER AWNING WITH LED LIGHTS
- BLACK TANK FLUSH
- OUTSIDE SHOWER WITH HOT & COLD WATER
- HIGH DEFINITION/AMPLIFIED TV ANTENNA
- BACKUP CAMERA PREP
- ALUMINUM TRIPLE ENTRY STEPS
- FURRION® SOLAR PREP
- EXTERIOR LED LIGHTS
- DETACHABLE POWER CORD
- POWER TONGUE JACK WITH LED LIGHT
- EXTERIOR SWING ARM ENTRY ASSIST HANDLE
- STABILIZER JACKS
- TWO MARINE GRADE EXTERIOR SPEAKERS
- TINTED WINDOWS
- UPPER BUNK BED WINDOW W/A
- R.V.Q. QUICK CONNECT W/A

*W/A: WHERE APPLICABLE

MANDATORY OPTIONS

- NORCO® AUTOMOTIVE DEPOSITION COATED FRAME
- KING BED - 72" X 80"
- ENCLOSED & HEATED UNDERBELLY
- ENCLOSED HOLDING TANKS
- ELECTRIC FLUSH FLOOR SLIDE OUTS W/A
- 15,000 BTU DUCTED AIR CONDITIONER WITH QUICK COOL
- UPGRADED INTERIOR DESIGN PACKAGE

OPTIONS

- UPGRADED ALUMINUM RIM PACKAGE
- NORCO® ELECTRIC STABILIZER JACKS
- SPARE TIRE & CARRIER
- MORRYDE® SOLID ENTRY TRIPLE STEP
- 60" X 80" QUEEN BED
- FURRION® LARGE 40" LED TV WITH BRACKET
- FURRION® MEDIUM 32" LED TV WITH BRACKET
- 50 AMP SERVICE WITH 2ND AIR PREP
- 50 AMP SERVICE 2ND AIR
- OUTSIDE KITCHEN*
- AVAILABLE ON THE FOLLOWING: 250BH, 281BH, 312BH, 323QB



Learn More
Scan this barcode using a QR Reader on your smart phone to learn more about Forest River.



A Berkshire Hathaway company.

FREE MEMBERSHIP
to Forest River Owners' Group

www.forestriverfrog.com



www.ForestRiverBuyLocal.com



24/7 EMERGENCY
ROADSIDE ASSISTANCE
WITH VEHICLE PURCHASE*

TOWING
JUMP-STARTS
TIRE CHANGES
FLUID DELIVERY
LOCKOUT
SERVICE

WINCH-OUT
MOBILE MECHANIC
TECHNICAL
SUPPORT
DEALER LOCATOR
SERVICES



*VALID FOR 1 YEAR FROM DATE OF PURCHASE



PRE-DELIVERY INSPECTION FACILITY

20,000 square feet of quality assurance. The bare essentials for a premium product. This state-of-the-art facility gives immediate daily feedback to production for quality assurance in every unit built.



*Optional outside kitchen

EAST TO WEST takes pride in our five guiding principles and our corporate philosophy which focuses on people working together to create high quality, value added products that deliver the ultimate RV experience!

**SUSTAINABLE
MANUFACTURING**

An important objective to our strategy and operations is to implement economically sound manufacturing processes to reduce/recycle waste & conserve energy and natural resources.

**CORPORATE & SOCIAL
RESPONSIBILITY**

We foster a business environment in which we focus on and practice:
- Ethical Labor Practices
- Teamwork
- Philanthropy
- Volunteering

**CULTURE &
VALUES**

We are a forward thinking company committed to fostering a culture of teamwork. By being transparent, we encourage our employees to think outside the box and make a difference!

**QUALITY &
CONSTRUCTION**

Our team takes pride in each unit we build. Our manufacturing standards and point to point inspections ensure each EAST TO WEST brand is built to the same quality specifications every time.

**OUR
COMMITMENT**

We strive to provide the highest quality products at the best possible price to our customers. We invite you to be a part of the EAST TO WEST family and we look forward to exceeding your expectations!

Your premier EAST TO WEST dealer:

3000 CR 6 W | Elkhart, IN 46514 | 574.264.6664 | www.EastToWestRV.com

©2020 East To West, Inc. a Division of Forest River, Inc., a Berkshire Hathaway Company. All Rights Reserved.

