



STRATUS

ULTRA-Lite Travel Trailers



Living Room/Kitchen

- Built-In Radius Entertainment Center w/Shoe Cubby (VBF)
- High Efficiency LED Lighting
- Panoramic Opening Slideout Windows
- Tilt-Out Utility Tray
- High-Rise Satin Nickel Faucet w/Sprayer
- Comfort by Design® Grand Dinette
- Comfort by Design® Sofa
- Jiffy w/Fold Down Center Console
- Flush-Mount Interior Speakers

Appliances

- 3-Burner Flush Mount Stovetop w/Oven, Glass Top & Backlit Back Splash
- 8 CU FT Refrigerator
- Vented Range Hood w/Light
- Coleman® Whisper A/C
- Microwave

Bath

- Foot-Flush Porcelain Toilet
- Multi-Shelf Shower or Tub
- Designer Shower Curtain w/Liner (VBF)
- Mirrored Medicine Cabinet

Bedroom

- 60" x 80" Sleep Tight® Mattress
- Teddy Bear® Bunk Mattress(s)
- Solid Wood Nightstands
- Full Length Closets w/Easy Access Nightstands w/USB Port (110 outlet)
- (2) Gas Struts for Large Under-Bed Storage

- Solid Privacy Door(s) (most models)
- TV & Satellite Connections
- Hard Valances
- Nightshades
- StorMore Nightstands (CPAP sized)

Exterior/Construction Features

- Available in (4) Exterior Colors (Grey, Red, White, Blue) High Gloss Fiberglass
- Carbon Fiber Look Rock Guard
- EZ Access® LP Tank Cover
- Large Pass-Thru Slam Latch Baggage Doors (cooler-sized)
- Wide-Trek® Axles
- Self-Adjusting Brakes
- Deep Slides w/Carbon Fiber Look Slideout Ends
- Tinted Safety Glass Windows
- Hitch Light
- Omni Directional Digital Antenna Receiver
- Large Assist Grab Handle
- Cable/Satellite Connection (2 locations)
- (2) Marine-Grade Exterior Speakers
- Gutter w/Downspouts
- Gutters above Slideouts
- Extra-Long Awnings
- 15" Nitrogen Filled Radial Tires
- Flip-Up Cargo Tray
- Lighted Power Tongue Jack
- Power Awning w/ LED Lights
- Flip-Up Solid Step (main door)
- Venture Bottle Opener/Dog Tie Down

- High Polished Aluminum Rims w/Black Accents
- Spare Tire & Hoist
- Ladder
- Black Tank Flush

LevelMate PRO (Mandatory)

- Venture Exclusive Wireless RV Leveling System

Weather-Shield Package (Mandatory)

- Forced Heat
- Enclosed Underbelly
- Enclosed Gate Valves
- Radiant Foil Barrier
- 1-Piece, Seamless, Walk-on, Tufflex Roofing Material w/15-Year Warranty

Exterior Package (Mandatory)

- Friction Hinge Entry Door
- Interior Entry Door Motion Light
- 5/8" Tongue & Groove Plywood Floor Decking
- NXG Huck Bolt Frame
- EZ Lube Hubs
- (4) Secure Stance Angled Stabilizer Jacks
- (2) 20 LB Easy Exchange LP Tanks
- Hot & Cold Exterior Shower
- 6-Gallon Gas/Electric DSI Water Heater
- Marine Grade Detachable Power Cord w/Light

- Prewired for Furrion Solar & Observation Camera
- (4) Ground Effect Blue LED Lights
- Magnetic Baggage Door Catches
- Keyed Alike Key System
- Battery Disconnect

Interior Package (Mandatory)

- Alpine White & Mountain Walnut Interior Wood
- Tufted Dinette Cushions
- Microwave
- Safe-Tek Hidden Storage w/Charging Center
- (2) USB Charging Ports in Bedroom
- Upgraded Mattress
- Overhead Storage in Slideouts
- Skylight w/Shade
- Pleated Nightshades
- Seamless Surf(X) Countertops, Sink Covers and Tabletops
- Stainless Steel Single Bowl Undermount Sink
- Full-Extension Ball Bearing Drawer Guides
- Pots & Pans Drawer
- Adjustable Pantry Shelves (most models)
- Shoe Cubby (varies by floorplan)
- Full Length Closets w/StorMore Nightstands
- Designer Padded Headboard
- Quilted Comforter
- Residential Carpet
- Wood Linoleum Flooring w/3-Year Warranty
- Radius Glass Shower Enclosure (VBF)

- Porcelain Toilet
- Frameless Fireplace

Options

- 50 AMP Service w/2nd A/C Prep
- 2nd A/C (50A w/Prep Req'd)
- Table/Chairs IPO Booth (N/A 231VRB)
- Tri-Fold Sofa
- Theater Seats
- 15,000 BTU A/C
- Swing Away Bumper Mount Grill
- Furrion Observation/Backup Camera
- (4) Independent Power Stabilizer Jacks

Entertainment Package (Optional)

- 40" HD LED TV w/ Swing-Arm Bracket

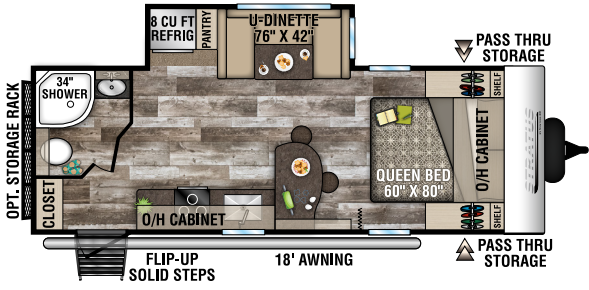
1.2 Cloud 9 Package (Optional)

- King WIFI Prep Entry Door w/Clearview Window
- HDMI/DVD Stereo w/5.1 USB Charger
- Large Single Bowl Stainless Steel Undermount Sink w/Dish Drying Racks
- Designer Shower Curtain w/Liner
- 40" TV w/Swing Arm
- Venture LevelMate PRO System

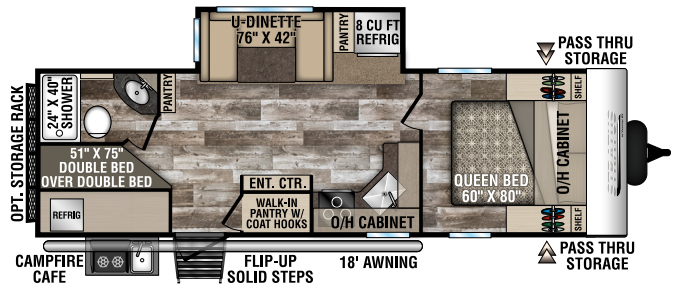
TRAVEL TRAILERS	SR231VRB	SR261VBH	SR261VRK	SR261VRL	SR271VRS	SR281VBH	SR321VQB
UVW (Unloaded Vehicle Weight)*	5,240	TBD	5,850	5,860	5,890	6,270	TBD
Dry Hitch Weight*	560	TBD	590	590	610	670	TBD
Dry Axle Weight*	4,680	TBD	5,260	5,270	5,280	5,600	TBD
NCC (Net Carrying Capacity)	1,760	TBD	1,150	1,140	1,110	2,030	TBD
GVWR	7,000	7,000	7,000	7,000	7,000	8,300	8,300
Interior Height	82"	82"	82"	82"	82"	82"	82"
Exterior Height with A/C	10' 10"	10' 10"	10' 10"	10' 10"	10' 10"	10' 10"	10' 10"
Exterior Width	96"	96"	96"	96"	96"	96"	96"
Exterior Length	26' 9"	30' 3"	30' 3"	30' 3"	30' 7"	32' 1"	35' 4"
Refrigerator (Cubic Feet)	8	8	8	8	8	8	8
Water Heater Cap. (Gal. Gas w/DSI)	6	6	6	6	6	6	6
Fresh Water Capacity (Gallon)	40	40	40	40	40	40	45
Black Water Capacity (Gallon)	32	32	32	32	32	32	32
Gray Water Capacity (Gallon)	32	64	64	64	64	64	64
LP Gas Capacity (Lbs.)	(2) 20# Bottles	(2) 20# Bottles	(2) 20# Bottles	(2) 20# Bottles	(2) 20# Bottles	(2) 20# Bottles	(2) 20# Bottles
Furnace BTUs (1,000s)	30	30	30	30	30	30	30
Tire Size	205/75R15D	205/75R15D	205/75R15D	205/75R15D	205/75R15D	225/75R15E	225/75R15E
Awning	18'	18'	20'	16'	16'	20'	20'

*This weight reflects the rolling average unit weight for each model. Your trailer weight will vary according to optional equipment.

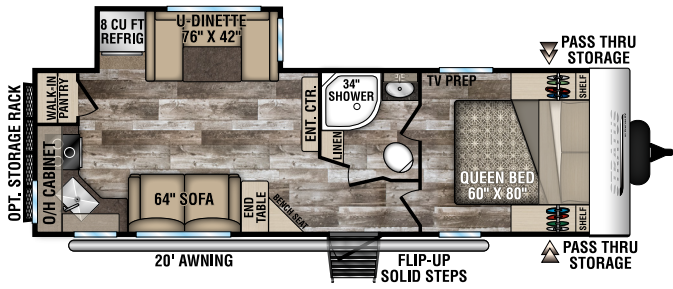
2020 STRATUS



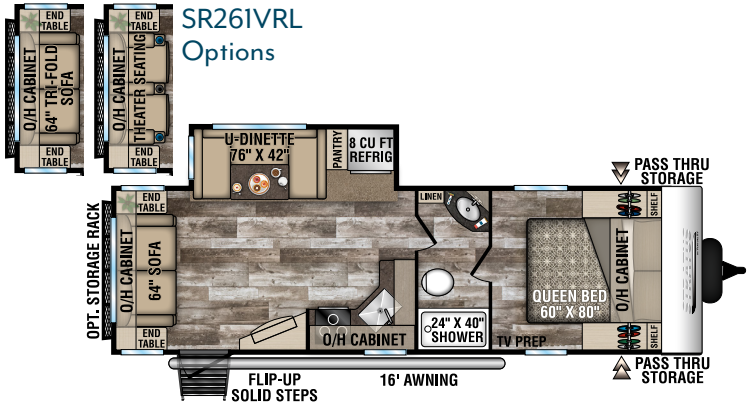
SR231VRB



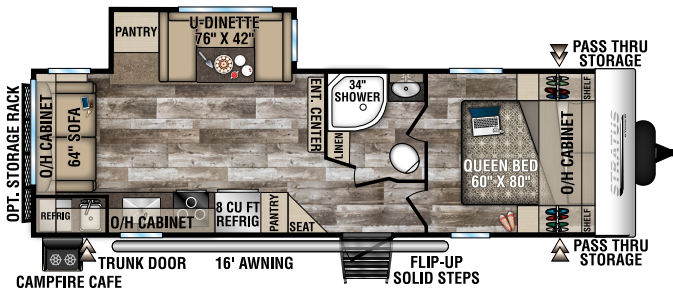
SR261VBH



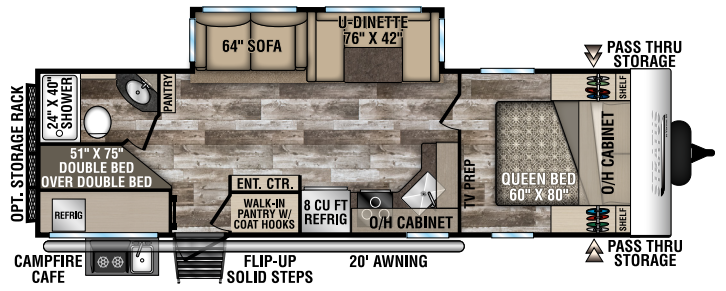
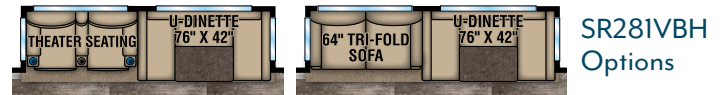
SR261VRK



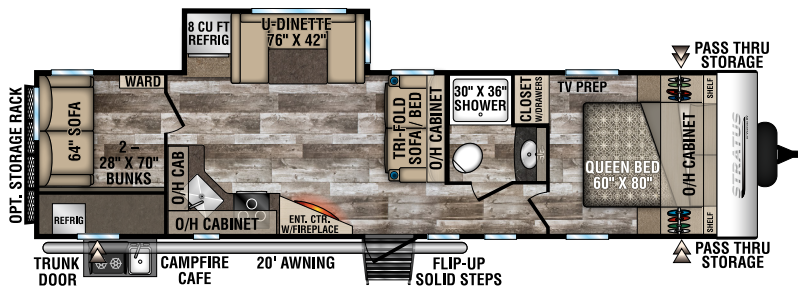
SR261VRL



SR271VRS



SR281VBH



SR321VQB



985 N 900 W | Shipshewana, IN 46565 | www.venture-rv.com

Due to continual research and advances, manufacturer reserves the right to change specifications, design, price and equipment without notice, and assumes no responsibility for any error in this literature. Some items shown are not included as standard or optional equipment.

©2019 Venture | 9/30/19 | 10M