

# MDC★USA

**CAMPER TRAILERS AND OFFROAD CARAVANS**

Escape with confidence®



**SUMMER 2024**  
EDITION

**RVDA**   
The National RV Dealers Association

**RV**  
INDUSTRY  
ASSOCIATION



# BUILT TOUGH FOR AMERICAN CONDITIONS



## WELCOME TO MDC POP-UP CAMPERS & OVERLAND TRAVEL TRAILERS

Established in 2005, MDC Camper Trailers & Offroad Caravans has grown to be one of Australia's largest manufacturers of offroad trailers. With over 40,000 units overlanding through Australia's tough outback, beaches and roads, MDC has the experience to build offroad trailers to last.

A proud family owned business, we take pride in partnering with RV dealerships across the United States with 1 production facility delivering quality products at affordable prices.

At MDC we live and breathe the outdoor lifestyle and combine that passion with our research and development. Our senior management, staff and their families regularly undertake R&D trips across some of Australia's and America's toughest terrain, punishing and testing the products to ensure you get the toughest and most capable trailer possible.

Now proudly available in the United States, we are thrilled to deliver tried and tested offroad hybrid travel trailers and pop up campers to the American public. 100% tested and proven, and 100% ready for your overlanding adventures. Find out for yourself why owning an MDC trailer means you can "Escape With Confidence."

Only quality materials go into building MDC products, these are supported by strategic partnerships with quality appliance manufacturers. Dometic and Truma are just some of the quality brands you'll find in an MDC trailer.

When off grid, power is everything, that's why MDC trailers are powered by BMPRO. With 50 years' experience in power solutions through design and manufacturing, BMPRO are the leading experts in RV power management.

## POWERED BY BMPRO

### NOW AVAILABLE IN USA

With over 50 years' experience in power solutions combined with manufacturing and design facilities in Melbourne, Australia, BMPRO are the leading experts in RV power management.

Inspired by the great outdoors, they have created a range of rugged, smart and reliable products to power your go anywhere adventures.

Their range of battery, power and RV management and control systems gives you peace of mind when you are on the road, so that you can relax in even the most far-flung destinations, knowing you have control over your power needs.

To learn more about the BMPRO range of products, please visit their website: <https://teambmp.com>

POWERED BY



## CONTENTS

|                                     |    |
|-------------------------------------|----|
| Industry Memberships                | 04 |
| MDC Masterclass                     | 05 |
| BMPRO                               | 05 |
| <b>15 YEAR ANNIVERSARY FEATURES</b> |    |
| LifePro+® Battery                   | 06 |
| Trail-Assure® Stability Control     | 07 |
| MDCLOK® Hitch/Coupling Device       | 07 |
| Quick Overview                      | 08 |
| <b>TRAVEL TRAILERS</b>              |    |
| FORTÉ 9+                            | 10 |
| XL15-4E MKII                        | 12 |
| XT16HR East West                    | 14 |
| XT16HR Island                       | 16 |
| XT17HRT Family                      | 18 |
| Travel Trailer Specifications       | 20 |



TOUGH TRAX shock absorbers were chosen after a year of vigorous MDC stress testing shock absorbers from numerous industry suppliers.

FACTOR 5 CHASSIS is tested and proven using "Finite Element Analysis" (FEA) to the relevant engineering standards. There are essentially 5 factors involved in the testing/validation of our chassis to give you peace of mind that every travel trailer or pop-up camper is up to tackling even the harshest offroad conditions.

All pictures shown are for illustration purpose only. Actual product may vary due to product enhancement.

# INDUSTRY MEMBERSHIPS



## NATIONAL RV DEALERS ASSOCIATION (RVDA)

As proud associate members of RVDA, MDC Campers and Caravans Inc demonstrates its commitment to collaboratively working with its dealer network to positively enhance the RV consumer experience.



## RV INDUSTRY ASSOCIATION (RVIA)

MDC Campers and Caravans Inc are proud members of the RV Industry Association. This membership (and the presence of the RVIA seal on our trailers) demonstrates our compliance to the RV standards adopted by the Association. Further, it represents our pledge to meet the Association's membership conditions, which includes being subject to regular compliance audits by RVIA standards inspectors, who monitor and provide education on thousands of requirements impacting electrical, plumbing, heating, fire & life safety systems and construction.

The presence of the RV Industry Association seal on our units demonstrates our commitment to the industry. Moreover, most public and private campgrounds in the United States require that RVs have an affixed standard seal to obtain entry.



## SPECIALTY EQUIPMENT MARKET ASSOCIATION (SEMA)

As industry leaders in the overlanding and offroading sector, MDC Campers and Caravans are proud to be members of SEMA. Always future focused, SEMA shows, events and initiatives allow MDC to continue to be at the cutting edge of the overlanding market not only in the United States but internationally.



## NATIONAL ASSOCIATION OF TRAILER MANUFACTURERS (NATM)

MDC Campers and Caravans Inc are proud to be committed to building trailers that comply with Federal Motor Vehicle Safety Standards. By completing NATM's Compliance Verification Program, our customers can be assured that they're buying a trailer built with safety in mind.

The NATM Compliance Decal affixed to the frame of all MDC USA's Trailers demonstrates that they have successfully passed the biennial safety compliance consultation as a part of NATM's Compliance Verification Program.



## PACIFIC WEST ASSOCIATES (PWA)

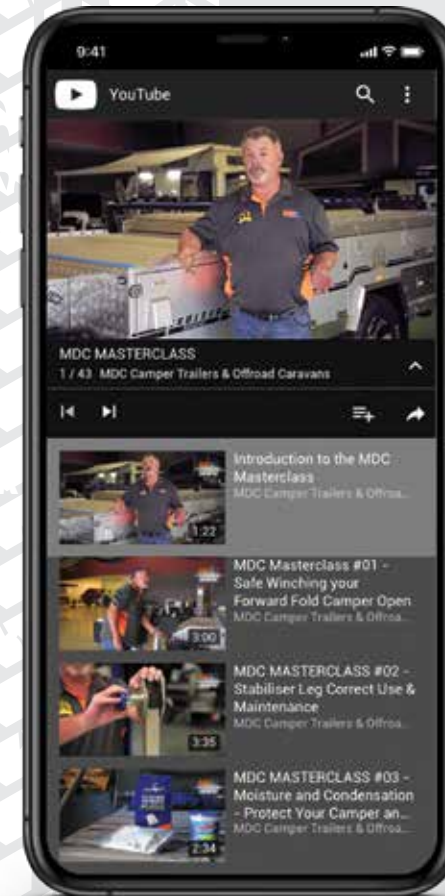
MDC Campers and Caravans Inc are certified to comply with the Recreational Vehicle Standard (NFPA1192) and the relevant National Electric Codes by PWA. As part of this certification, MDC is subject to strict on-going inspection and monitoring of quality assurance functions to ensure compliance.



MDC USA



## VIDEO HINTS, TIPS AND TRICKS



Knowledge is power and MDC gives you the power with the MDC Masterclass series. An extensive video library presented by our very own Steve Zammit full of useful information to make owning an MDC trailer a rewarding and hassle free experience.

Maintenance tips, preparing for your overland adventure and doing it all safely is covered by Steve's presentations, built from knowledge gained through decades of camping, 4x4 and overland adventures.

Rewarding viewing for those new to overland and seasoned travellers alike, head across to our Youtube channel and check it out.



Scan the QR code to view our selection of MDC Masterclass videos.

[youtube.com/MarketDirectCampers](https://youtube.com/MarketDirectCampers)



## HISTORY AND EXPERIENCE

BMPRO has its genesis from a business with a rich 50-year history in developing custom designed power management platforms. With design and manufacturing facilities in Melbourne, Australia, BMPRO has over 150,000 systems installed across various combinations of power management, control and monitoring systems in the RV industry worldwide. BMPRO currently supplies the majority of all substantial RV manufacturers in Australia and U.S.

## INNOVATION

Many of the systems available now are very new to the RV market. Our R&D department houses leading edge technology with highly trained and experienced automotive and electronic engineers who use the latest design tools to create unique solutions.

BMPRO is one of the pioneers using digital platforms in RVs with one of the world's largest install bases of smart power management systems. We continue to research the latest trends and combined with extensive research within the RV consumer market we provide ideas and products which are at the forefront of making the RV users experience during their vacation free of any unnecessary drama.



Designer and manufacturer of power supplies, controls, monitors and multiple systems for RVs.



**OVER 15 YEARS OF QUALITY  
MANUFACTURING**



**2005**

Founded in 2005, MDC has grown exponentially since.



**2011**

Perth showroom opens in 2011, with Sydney, Adelaide, and Melbourne soon following.



**2013-2014**

The first XT Hybrid Caravan is developed in 2013.

2014 saw the first of many awards with Camper Trailer of The Year.



**2016-2018**

Launch of the Australian made AUSRV range in 2016.

By 2018, stores were launched in Caboolture and Newcastle along with the Masterclass video tutorials.



**2019**

2019-21 saw milestones of 30,000 off-road campers and caravans to the Australian market.

MDC gained ISO 9001 compliance and became the first off-road hybrid importer to achieve RVMAP accreditation.



**2021**

In 2021 MDC, became the 3rd largest manufacturer by volume in Australia with more milestones planned for the future.



**2022**

Saw the milestones of 40,000 off-road campers and caravans delivered.



**2023**

MDC USA won RV News "Adventure Trailer of the Year" Award with the AUSRV XL15-4E MKII.

All MDC Camper Trailer and Offroad Caravan models are exclusively designed in house in Australia to meet the toughest offroad conditions. The combination of extensive manufacturing experience, engineers that share the passion for offroad travel and decades of experience in MDC's offshore partner manufacturing facility has been the formula to create Australia's leading brand of Offroad Campers and Caravans.

With an exclusive relationship spanning over 10 years with their partner manufacturing facility, MDC's model range has become the industry benchmark in quality, durability and presentation, thanks to a highly skilled workforce coupled with cutting edge automation and advanced manufacturing techniques.



**TOUGH  
TRAX™**

**FACTOR  
5  
CHASSIS**

**TOUGH TRAX** shock absorbers were chosen after a year of vigorous MDC stress testing shock absorbers from numerous industry suppliers.

**FACTOR 5 CHASSIS** tested and proven using "Finite Element Analysis" (FEA) to the relevant engineering standards. There are essentially 5 factors involved in the testing/validation of our chassis to give you peace of mind that every camper or caravan is up to tackling even the harshest off-road conditions.



**LIFETIME  
STRUCTURAL/CHASSIS  
DRAWBAR WARRANTY**



**BUILT TOUGH AND TO LAST**

Caravans and campers in their simplest form aren't too far removed from 20 years ago, but the materials used in construction have changed enormously. Aluminium frames and composite panelling has changed the landscape for caravan construction and MDC have embraced the technology to build a safer, stronger, and smarter product that's lighter and more reliable. Fibreglass composite floors with an aluminium frame body mean the structure can't rot, rust, or perish. Combine this with a galvanised chassis with a lifetime warranty and you have peace of mind protection for your investment.

**ONGOING SUPPORT**

Once you're in your new MDC, the attention to detail isn't over. A dedicated customer service team is ready to assist with technical assistance, warranty, and spare parts. Fast, efficient turnarounds keep you out camping and living the dream with minimal interruption. When it comes to learning about your new trailer, MDC have you covered with extensive owner manuals and instructional videos available on their website and YouTube channel. That's all the information you need available on your portable device.



# SAFER STRONGER SMARTER



1 **LIFEPRO+®**

2 **TRAIL-ASSURE®**

3 **MDC-LOK®**

## Introducing new standard features

Incorporating the latest in technology and convenience features, the 15 Year Anniversary Editions represent the leading models in their class. With important safety features to protect you and your family paired with lithium battery and smart power management, these pop-up campers and travel trailers compete well above their weight class.

### LIFEPRO+®

### LITHIUM IRON PHOSPHATE BATTERY RANGE

1 The LiFePRO+® Lithium battery range provides unparalleled performance, durability, and off-grid capabilities within the lithium deep cycle battery technology space.

Equipped with an internal battery management system (BMS) which continually monitors and optimises its prismatic cells during use, the LiFePRO+® BMS also protects the battery from fault conditions such as over charge, over discharge and short circuit.



#### RELIABLE

Designed and made in Australia with internal BMS ensures optimal power delivery.



#### LONG LIFESPAN

Withstand more than 2000 charge cycles.



#### SELF HEATED BATTERY

LiFePRO+® integrated Lithium Battery heating



#### LIGHT WEIGHT

30% lighter than the equivalent capacity AGM battery bank.



#### UNPARALLELED CAPACITY

Unlike traditional deep cycle battery systems, LiFePRO+® can utilise more of its rated capacity.

### TRAIL-ASSURE®

### ELECTRONIC STABILITY CONTROL BRAKING SYSTEM

The Trail-Assure® BG-5000 incorporates an asymmetric system in which it can accurately apply individual brakes compared to other sway controllers in the market.

The unit automatically calculates and applies the appropriate braking solution where towing instability occurs, stabilising and controlling the direction of the trailer.

2 This in turn results in the driver not having to intervene, providing a safer experience. **OVERLANDING READY**

As the system continuously monitors trailer movement, it is able to detect when encountering rough terrain which indicates off-road towing.

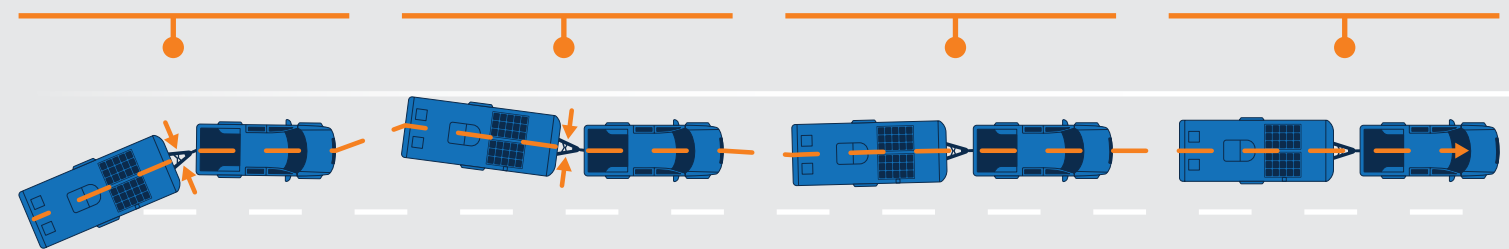
A pre-set algorithm determines this and will automatically disengage the system temporarily and recalculates at 5-second intervals. This function reduces unnecessary wear and tear on braking components and running gear, extending the lifespan of consumable parts. Once the system detects it is back on the road, it will automatically re-engage providing a seamless overlanding experience.

1. The on-board module constantly monitors travel trailer movements. If instability is detected the system automatically applies the brakes independently to control it.

2. This asymmetric approach results in controlled braking which directly counteracts instability of the travel trailer.

3. Travel trailer instability is reduced for faster control with minimal speed reduction.

4. Once righted, braking is released and the system returns to monitoring the position and movement of the trailer.

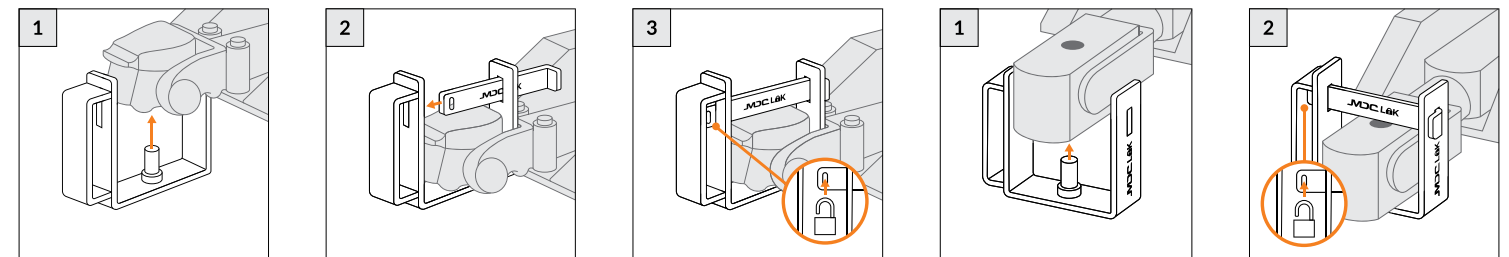


### MDCLOK

### ANTI-THEFT HITCH/COUPLING DEVICE

3 All 15-year anniversary models are supplied with an MDC engineered lock device. This device is designed and manufactured to deter the theft of your new travel trailer.

The MDC-LOK® is an easy-to-use device and only takes seconds to fit to your hitch/coupling.



Example of the MDC-LOK Hitch/Coupling Lock device being fitted to a CruiseMaster DO-35 Coupling.

Example of the MDC-LOK Hitch/Coupling Lock device being fitted to a MDC Polyblock Coupling

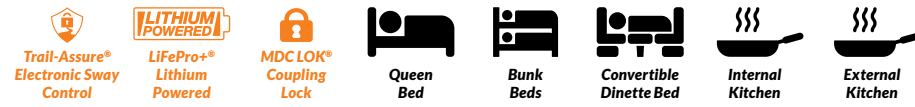
\*MDC supplies the hitch lock as an added safety measure which acts only as a theft deterrent. MDC in no way endorses that this product will prevent theft of your travel trailer or pop-up camper and it is solely the responsibility of the owner to maintain adequate security of the travel trailer or pop-up camper.



# TRAVEL TRAILER QUICK OVERVIEW

- 15 YEAR ANNIVERSARY EDITION FEATURES
- STANDARD
- OPTIONAL

Sleeps



| TRAVEL TRAILERS | Sleeps           |   | Trail-Assure <sup>®</sup> Electronic Sway Control | LiFePro+ <sup>®</sup> Lithium Powered | MDC LOK <sup>®</sup> Coupling Lock | Queen Bed | Bunk Beds | Convertible Dinette Bed | Internal Kitchen | External Kitchen | Internal Wet Bath | External Shower Tent | Internal Dinette | Bluetooth Stereo | Included TV | Included Microwave | Included Fridge/Freezer | Manual Awning | Electric Awning | Full Annex | Included Solar Panels | Standard A/C | Propane heater |   |
|-----------------|------------------|---|---|---------------------------------------|------------------------------------|-----------|-----------|-------------------------|------------------|------------------|-------------------|----------------------|------------------|------------------|-------------|--------------------|-------------------------|---------------|-----------------|------------|-----------------------|--------------|----------------|---|
|                 | FORTÉ 9+         | 2 | ○   | ○                                     | ●                                  |           |           |                         |                  | ●                |                   |                      |                  |                  | ●           |                    |                         |               |                 |            | ●                     | ○            | ●              |   |
|                 | XL15-4E MKII     | 4 | ●   | ●                                     | ●                                  | ●         | ●         |                         |                  | ●                | ●                 |                      |                  |                  | ●           |                    |                         |               | ●               |            |                       | ●            | ●              | ● |
|                 | XT16HR EAST WEST | 3 | ●   | ●                                     | ●                                  | ●         |           |                         | ●                | ●                | ●                 |                      |                  |                  | ●           |                    | ●                       |               | ●               |            |                       | ●            | ●              | ● |
|                 | XT16HR ISLAND    | 3 | ●   | ●                                     | ●                                  | ●         |           |                         | ●                | ●                | ●                 |                      |                  |                  | ●           |                    | ●                       |               | ●               |            |                       | ●            | ●              | ● |
|                 | XT17HRT FAMILY   | 4 | ●   | ●                                     | ●                                  | ●         | ●         | ●                       | ●                | ●                | ●                 |                      |                  |                  | ●           | ●                  | ●                       |               | ●               |            |                       | ●            | ●              | ● |

## STANDARD INCLUSIONS FOR ALL MODELS

- LIFETIME WARRANTY**  
Lifetime structural chassis and drawbar warranty
- TIMKEN BEARINGS**  
Genuine TIMKEN or SKF 6600 lbs rated parallel bearings
- FACTOR 5 CHASSIS**  
Engineered and tested for the harshest conditions
- MEGA HUB**  
12" electric drum brakes
- STAINLESS STEEL KITCHEN**  
Hard-wearing stainless steel kitchen
- MDC MASTERCLASS**  
Product tutorial and handover videos
- AUSTRALIAN OWNED AND OPERATED**  
Assembly facilities and showrooms nationwide

# FORTÉ 9+ OVERLAND

Lighter and more compact than any previous MDC model, the fully overland Forte 9+ is here for those that want a quality compact overland travel trailer but don't want a full size 4WD. The Forte 9+ has a dry weight of 3090lbs and can be towed by many full sized sedans and SUV's making it the right choice for more people than ever. Fast setup, privacy and all the features you expect along with the MDC DNA of tough construction for some of the most rugged of countrysides that the US can throw at you.

If you didn't think you could tow an offroad trailer or have room to store one, now is the time to talk to MDC and find out if the Forte 9+ is your future to getting away.

-  Queen Bed
-  270° Awning with Full Annex
-  External Kitchen
-  Included Solar Panels
-  SUV Friendly
-  Propane Furnace



*"A lot more comfortable and enjoy camping a lot more"*

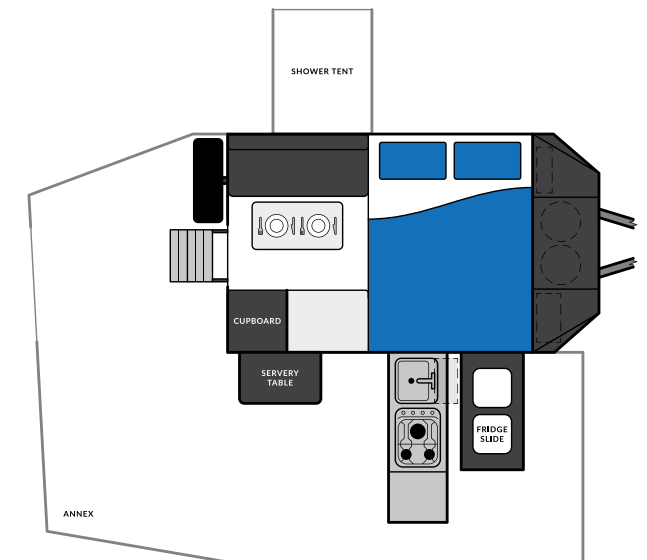
- Adam Gallas



## FORTÉ 9+ MEASUREMENTS



|                 |          |
|-----------------|----------|
| DRY WEIGHT      | 3090 lbs |
| TONGUE WEIGHT   | 317 lbs  |
| GVWR            | 4409 lbs |
| LENGTH (CLOSED) | 15'1"    |
| HEIGHT (CLOSED) | 7'9"     |
| WIDTH (CLOSED)  | 7'7"     |



All pictures shown are for illustration purpose only. Actual product may vary due to product enhancement.

# XL15-4E MKII

## OVERLAND

The ultimate in comfort and quality of finish in an overland travel trailer for 4 is here with the XL15-4E MKII. Absolutely packed with standard features you would expect in travel trailers twice the price, this is value for money you can't pass up. Aluminum frame and composite body construction means it's comfortable. The toilet and shower ensuite is convenient and adds privacy as does the lightweight annex that encloses the outside cooking area.

Indoor cooking is taken care of with a 2 burner gas hob with sink and the pantry can be accessed from inside and outside for cooking convenience. With many more features, the XL15-4E MKII is a must see.

- Queen Bed
- 200Ah Lithium Battery
- Internal and External Wet Bath
- Included Solar Panels
- Included A/C
- Internal & External Kitchen



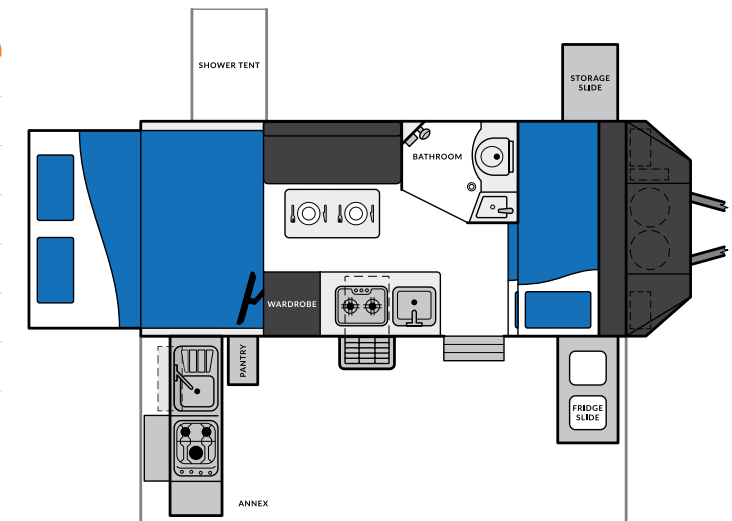
*"Unbelievable. Truly flawless and a joy to live in with all the creature comforts."*

- Todd RazorSharpe

### XL15-4E MKII MEASUREMENTS



|                          |          |
|--------------------------|----------|
| DRY WEIGHT               | 5032 lbs |
| TONGUE WEIGHT            | 401 lbs  |
| GVWR                     | 6147 lbs |
| LENGTH (CLOSED WITH A/C) | 22'      |
| HEIGHT (CLOSED WITH A/C) | 8'8"     |
| WIDTH (CLOSED WITH A/C)  | 7'6"     |



All pictures shown are for illustration purpose only. Actual product may vary due to product enhancement.



# XT16HR

## EAST WEST

Every feature in this overland hybrid travel trailer is designed for comfort and convenience with a huge bed and dinette with separate toilet and shower ensuite, propane furnace heating and air conditioning provide superior internal comfort. Electric awning and lightweight ensuite add space and weather protection for outside cooking and relaxing.

Offroad ready and set up for off-grid life, the X-Track suspension will get you there no matter the terrain. Safety features including rear view camera and electronic stability control take good care of you when towing and the lifetime structural warranty offers peace of mind.



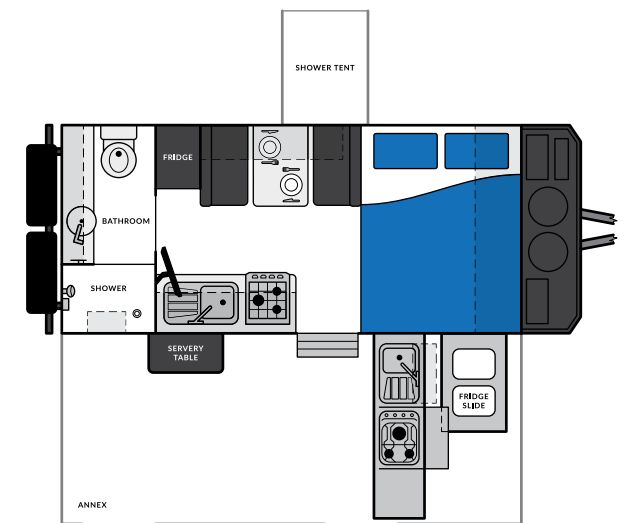
- Queen Bed
- Convertible Dinette Bed
- Internal and External Kitchen
- Internal Wet Bath
- Included Solar Panels
- Propane Furnace



### XT16HR EAST WEST MEASUREMENTS



|                          |          |
|--------------------------|----------|
| DRY WEIGHT               | 5354 lbs |
| TONGUE WEIGHT            | 441 lbs  |
| GVWR                     | 6147 lbs |
| LENGTH (CLOSED WITH A/C) | 21'6"    |
| HEIGHT (CLOSED WITH A/C) | 10'      |
| WIDTH (CLOSED WITH A/C)  | 7'8"     |



*"Best value, best warranty and a true off road van. Built to easily get you wherever you can tow it"*

- Gary Davis



All pictures shown are for illustration purpose only. Actual product may vary due to product enhancement.

# XT16HR

## ISLAND

Island bed comfort and convenience is hard to beat, but when you wrap it in features like separate shower and toilet ensuite, internal and external cooking, dinette, air conditioning and propane furnace heating you have the ultimate off-grid and offroad home away from home.

With lithium power, solar charging and plenty of water storage your longer off-grid stays are made easy. With an engineered chassis covered by a lifetime structural warranty, aluminum frame body with a composite external skin and the best offroad suspension in its class, the XT16HR island is ready for adventure wherever that may take you.



- Queen Bed
- Convertible Dinette Bed
- Internal and External Kitchen
- Internal Ensuite
- Included Solar Panels
- Propane Furnace



*"It was hard to get away and too much work with the kids. Now it's hitch and go!"*

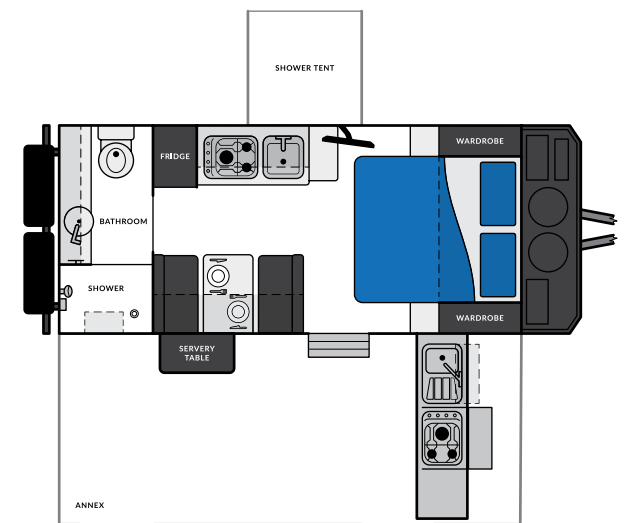
- James Keith Ravesteyn



### XT16HR ISLAND MEASUREMENTS



|                          |          |
|--------------------------|----------|
| DRY WEIGHT               | 5603 lbs |
| TONGUE WEIGHT            | 458 lbs  |
| GVWR                     | 6147 lbs |
| LENGTH (CLOSED WITH A/C) | 22'1"    |
| HEIGHT (CLOSED WITH A/C) | 10'      |
| WIDTH (CLOSED WITH A/C)  | 7'8"     |



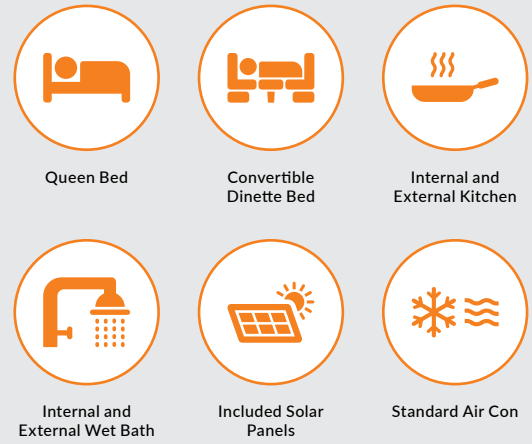
All pictures shown are for illustration purpose only. Actual product may vary due to product enhancement. \*Overseas model shown.

# XT17HRT

## FAMILY

Rarely do you find uncompromised comfort and features in an overland hybrid travel trailer and still retain affordability and value for money. The all-new XT17HRT Family Travel Trailer is dedicated to families that want to see everything our country has to offer with comfort, safety, and a nice touch of luxury.

Destined to be the next big thing in family overland travel trailers, the XT17HRT Family has a list of standard features you can't pass up. Propane heating, air conditioning, microwave, internal and external cookers, lithium power, and an auto-switching pure sinewave inverter are just the beginning. Family overland travelling just got a new pack leader.



*"Recently picked up my MDC XT17HRT. The van is the best I have seen with superb quality throughout. Before you buy a camper or a van check out the MDC Range."*

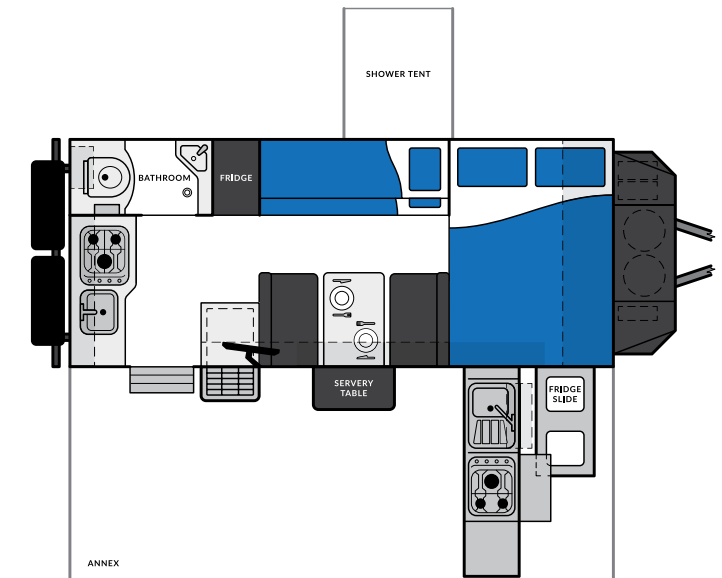
- Hugh Beaton



### XT17HRT FAMILY MEASUREMENTS



|                          |          |
|--------------------------|----------|
| DRY WEIGHT               | 6085 lbs |
| TONGUE WEIGHT            | 595 lbs  |
| GVWR                     | 7716 lbs |
| LENGTH (CLOSED WITH A/C) | 23'2"    |
| HEIGHT (CLOSED WITH A/C) | 10'3"    |
| WIDTH (CLOSED WITH A/C)  | 7'7"     |



All pictures shown are for illustration purpose only. Actual product may vary due to product enhancement.

# TRAVEL TRAILER SPECIFICATIONS

• STANDARD

| GENERAL                          | FORTÉ 9+ | XL15-4E MKII  | XT16HR EAST WEST    | XT16HR ISLAND       | XT17HRT FAMILY             |
|----------------------------------|----------|---------------|---------------------|---------------------|----------------------------|
| Sleeps                           | 2        | 4             | 3                   | 3                   | 5                          |
| Main Bed                         | Queen    | Olympic Queen | Olympic Queen       | Queen               | Olympic Queen              |
| Other Bed(s)                     |          | Bunk Bed      | Convertible Dinette | Convertible Dinette | Convertible Dinette & Bunk |
| Aluminum Alloy Body Construction | ●        | ●             | ●                   | ●                   | ●                          |

## WEIGHT & DIMENSIONS

|               |                             |                              |                             |                             |                               |
|---------------|-----------------------------|------------------------------|-----------------------------|-----------------------------|-------------------------------|
| Open          | 22'4" L<br>18' W<br>10'1" H | 23'12" L<br>18' W<br>10'1" H | 21'6" L<br>14'3" W<br>10' H | 22'1" L<br>14'3" W<br>10' H | 23'2" L<br>14'5" W<br>10'3" H |
| Closed        | 15'1" L<br>7'7" W<br>7'9" H | 22' L<br>7'6" W<br>8'8" H    | 21'6" L<br>7'8" W<br>10' H  | 22'1" L<br>7'8" W<br>10' H  | 23'2" L<br>7'7" W<br>10'3" H  |
| Dry Weight    | 3090 lbs                    | 5032 lbs                     | 5354 lbs                    | 5603 lbs                    | 6085 lbs                      |
| Tongue Weight | 317 lbs                     | 401 lbs                      | 441 lbs                     | 458 lbs                     | 595 lbs                       |
| GVWR Rating   | 4409 lbs                    | 6147 lbs                     | 6147 lbs                    | 6147 lbs                    | 7716 lbs                      |

## 15 YEAR ANNIVERSARY FEATURES

|  |   |   |   |   |   |
|--|---|---|---|---|---|
| Trail-Assure® BG-5000 Electronic Stability Control |   | ● | ● | ● | ● |
| Hitch Coupling Lock                                | ● | ● | ● | ● | ● |
| LiFePRO+® 12V 200AH Lithium Iron Phosphate Battery | ● | ● | ● | ● | ● |

## CHASSIS

|  |                            |                            |                            |                            |                               |
|--|----------------------------|----------------------------|----------------------------|----------------------------|-------------------------------|
| Q345 Galvanized Steel Frame                          | 5" x 2"                    | 6" x 2"                    | 5" x 2"                    | 5" x 2"                    | 6" x 2"                       |
| Cruisemaster™ DO35 Hitch Coupling                    | ●                          | ●                          | ●                          | ●                          | ●                             |
| Aluminum Alloy Wheel With Goodride Mud Terrain Tires | ●                          | ●                          | ●                          | ●                          | ●                             |
| Spare Wheel(s)                                       | 1x                         | 2x                         | 2x                         | 2x                         | 2x                            |
| X-TRACK Suspension With Shock Absorbers              | TOUGH TRAX Shock Absorbers | TOUGH TRAX Shock Absorbers | TOUGH TRAX Shock Absorbers | TOUGH TRAX Shock Absorbers | TOUGH TRAX HD Shock Absorbers |
| 12" Electromagnetic Brakes With Breakaway System     | ●                          | ●                          | ●                          | ●                          | ●                             |
| 4x Heavy Duty lockable & Adjustable Stabilizer Legs  | ●                          | ●                          | ●                          | ●                          | ●                             |

## MAJOR APPLIANCES

|                                  |                       |                    |                    |                    |                    |
|----------------------------------|-----------------------|--------------------|--------------------|--------------------|--------------------|
| Air Conditioner                  | Optional Portable A/C | Dometic Penguin II | Dometic Penguin II | Dometic Penguin II | Dometic Penguin II |
| Truma Aquago Hot Water System    | ●                     | ●                  | ●                  | ●                  | ●                  |
| Propane Operated Dometic Furnace | ●                     | ●                  | ●                  | ●                  | ●                  |
| Microwave                        |                       |                    |                    |                    | 900W               |

| INTERIOR                             | FORTÉ 9+ | XL15-4E MKII | XT16HR EAST WEST    | XT16HR ISLAND | XT17HRT FAMILY |
|--------------------------------------|----------|--------------|---------------------|---------------|----------------|
| Toilet/ Bathroom                     |          | ●            | ●                   | ●             | ●              |
| Hot & Cold Plumbed Shower (Wet Bath) |          | ●            | ●                   | ●             |                |
| Stainless Steel Kitchen              |          | 2x Burner    | 3x Burner with Oven | 3x Burner     | 3x Burner      |

## EXTERIOR

|  |                           |                                   |                                    |                                    |                                   |
|--|---------------------------|-----------------------------------|------------------------------------|------------------------------------|-----------------------------------|
| Awning   | 270° Manual               | 13.8' Electric                    | 13.8' Electric                     | 14.3' Electric                     | 14.3' Electric                    |
| Full Annex (Enclosed Roof, Walls, Floor & Draft Skirt)   | ●                         | ●                                 | ●                                  | ●                                  | ●                                 |
| Propane Tank Holder(s)   | 2x 20lbs                  | 2x 20lbs                          | 2x 20 lbs                          | 2x 20 lbs                          | 2x 20lbs                          |
| Jerry Can Holder(s)  | 1x 5 gallon               | 2x 5 gallon                       | 2x 5 gallon                        | 2x 5 gallon                        | 2x 5 gallon                       |
| Fresh & Gray Water Tank(s)<br>F = Fresh, G = Gray  | 31 gallon (F)             | 2x 31 gallon (F)<br>21 gallon (G) | 2 x 21 gallon (F)<br>21 gallon (G) | 2 x 21 gallon (F)<br>21 gallon (G) | 2x 21 gallon (F)<br>21 gallon (G) |
| 12V Electric Marine Diaphragm Water Pump   | ●                         | ●                                 | ●                                  | ●                                  | ●                                 |
| Cold Weather Pack - Includes tank heating pads, HWS electric anti-freeze kit, LiFePro+® Integrated heating and insulated water lines | ●                         | ●                                 | ●                                  | ●                                  | ●                                 |
| Slide-out Stainless Steel Kitchen  | ●                         | ●                                 | ●                                  | ●                                  | ●                                 |
| Chequer Plate Stone Guard  | ●                         | ●                                 | ●                                  | ●                                  | ●                                 |
| Fridge Slide   | 39½" L<br>21" W<br>19¾" H | 39½" L<br>21½" W<br>19¾" H        | 40½" L<br>21½" W<br>18½" H         |                                    | 45½" L<br>21½" W<br>19" H         |
| Integrated Front Toolbox   | ●                         | ●                                 | ●                                  | ●                                  | ●                                 |
| Pull-Down Entry Step   | ●                         | ●                                 | ●                                  | ●                                  | ●                                 |

## ELECTRICAL & OUTLETS

|   |                        |                        |                        |                        |                        |
|---|------------------------|------------------------|------------------------|------------------------|------------------------|
| Solar Panels  | 3x 175W                | 4x 175W                | 2x 150W                | 2x 150W                | 4x 175W                |
| Battery Management System                           | ●                      | ●                      | ●                      | ●                      | ●                      |
| Battery Monitory                                    | ●                      | ●                      | ●                      | ●                      | ●                      |
| AIMS Power Pure Sine Wave Inverter                  | 2000W                  | 2000W                  | 1500W                  | 1500W                  | 2000W                  |
| Internal 12V LED Lighting                           | ●                      | ●                      | ●                      | ●                      | ●                      |
| External 12V LED Lighting                           | ●                      | ●                      | ●                      | ●                      | ●                      |
| Trailer Connector                                   | 7-Way (SAE J2863 type) | 7-Way (SAE J2863 type) | 7-Way (SAE J2863 type) | 7-Way (SAE J2863 type) | 7-Way (SAE J2863 type) |
| Internal Total Power Outlets (110V, 12V & USB)      | 4x                     | 16x                    | 9x                     | 15x                    | 16x                    |
| External Total Power Outlets (12V & Anderson Plugs) | 3x                     | 4x                     | 4x                     | 2x                     | 6x                     |
| Stereo Unit With Internal & External Speakers       | ●                      | ●                      | ●                      | ●                      | ●                      |
| HD LED TV(s) With Bracket(s)                        | ●                      | ●                      | ●                      | ●                      | ●                      |



# MDCUSA

CAMPER TRAILERS AND OFFROAD CARAVANS



## MDCUSA'S TRUSTED BRANDS

TIMKEN ↗ DOMETIC FURRION THETFORD GOODRIDE NORCOLD

truma CRUISE MASTER *Caframo* JENSEN BMPRO WFCO

PENTAIR ATR/ JG  
John Guest

Market Direct Group Pty Ltd makes every effort to maintain the accuracy and quality of the information provided in this catalogue. However, Market Direct Group Pty Ltd cannot guarantee and assumes no legal liability or responsibility for the accuracy or completeness of the information provided. The information contained in this catalogue is for general guidance only. You should neither act, nor refrain from action, on the basis of any such information. You should take appropriate professional advice on your particular circumstances because the application of our equipment may vary depending on particular circumstances.

Escape with confidence®

