

Springdale

EASTERN

TRAVEL TRAILERS

FIFTH WHEELS

TOY HAULERS

SINGLE-AXLES

SAY HELLO

TO YOUR NEXT ADVENTURE



**Keystone RV
Company**

The ultimate ownership experience.

The goal of Keystone RV Company is to surprise and delight our owners at each and every touchpoint. We're happy when our campers are happy, and we are committed to providing the very best ownership experience in the industry.



1 EASIER SHOPPING.

At Keystone, we make choosing an RV as easy as finding the Big Dipper on a dark summer night. With comprehensive online product information, Key Connect™ product advisors, and an unparalleled dealer network, we will help you select the perfect RV for your family's adventure.

2 INNOVATIVE THINKING.

The road's a nicer place when you have the industry's smartest features behind you. Keystone leads the pack in patented innovations that make our RVs safer, more comfortable, and easier to operate.

3 LONG HAUL QUALITY.

To keep you on the road, there are certain things we just won't build a Keystone RV without. Game-changing features like our Unified Wiring Standard, Tru-Fit™ five-point slide construction, and no-fail Tuf-Lok™ A/C duct joiners combined with exhaustive testing and inspections are some of the reasons why Keystone is able to offer our owners the industry's best 3-year limited structural warranty.

4 WORRY-FREE CUSTOMER SERVICE.

Wherever the road takes you, you're never too far from an authorized Keystone service center. We also offer live service assistance, ultra-fast parts shipping, online maintenance tips and tricks, and a single-point warranty claims policy. *That's* peace of mind.

5 KEYSTONE NATION.

When you choose Keystone, you become a part of one of the largest camping families in the country. We're Keystone Nation. A friendly community where people share photos, travel tips and amazing stories – all in the spirit of camaraderie and adventure. Come join us.

Experience the Springdale lifestyle by visiting [#keystonespringdale](https://www.instagram.com/keystonespringdale)



Keystone EXCLUSIVE Innovations

Year after year, Keystone RV's experienced team delivers Built For the Long Haul quality you expect and exclusive innovations you won't find anywhere else.



3-year Limited Structural Warranty, 1-year Limited Base Warranty

Every new Keystone RV comes with the industry's best three-year limited structural warranty AND a one-year limited base warranty. Ask your dealer, visit keystonerv.com, or call Keystone owner relations for details.



4G LTE and Wi-Fi Prep

All units are equipped with a new Furrion® antenna that integrates 4G LTE and Wi-Fi with standard VHF/UHF/AM/FM reception.

Keystone EXCLUSIVE Innovations



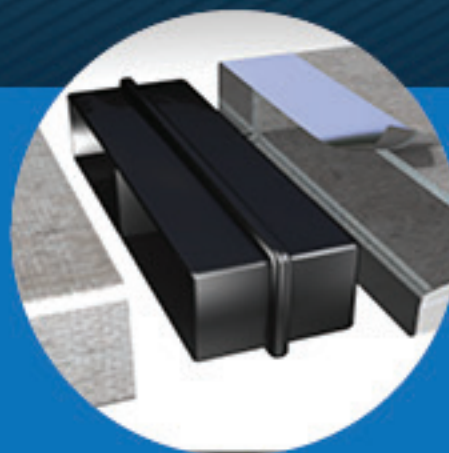
Color-Coded Wiring

Easy-to-trace circuits simplify electrical and entertainment system troubleshooting.



In-Floor Heating Ducts

Ducting allows for more airflow that distributes heat evenly for optimal comfort.



Tuf-Lok™ A/C Duct Joiners

Crush resistant design securely joins A/C ductwork, drastically reducing chilled-air leaks and boosting cooling efficiency and comfort.



Tru-fit™ slide construction

A more durable slide room design that minimizes functional motor and structural stress, resists leaking.

SPRINGDALE



SINGLE-AXLES | TRAVEL TRAILERS | TOY HAULERS | FIFTH WHEELS

Get up and get going with Springdale's 20th Anniversary Edition.

Springdale has introduced more families to the camping lifestyle than any other Keystone brand. Why? Because Springdale offers more standard features, options and amenities than you will find in other conventionally built RV brands. Combined with Keystone's quality construction and customer service, Springdale will make you wonder what you were waiting for.

Springdale's exciting 20th anniversary models feature a fresh new exterior styling, modern interior design touches, and the introduction of the Tailgator toyhaulers to our full lineup of fifth wheels, travel trailers and minis.

For more information, please visit keystonerv.com/springdale

Feature-Rich Travel Trailers

Loaded with amenities that make camping easier, safer and more comfortable.



DSI Quality Circle Award Winner

For the past two years, Springdale received the highest dealer satisfaction scores for quality, service, and parts.



Arched Ceilings

Increases interior height to 82" for an expansive, open feel.



Solid, Real Hardwood Cabinetry

Others in this segment use wrapped doors. Solid, real wood cabinets will last longer in moist climates and is more durable.



Arctic Package

Extend the camping season with forced heat through the center of the coach into the underbelly to keep your tanks and waterlines warm.



Pressed Countertops

Marbled pressed countertops that are exceptionally durable and moisture resistant.



Power Tongue Jack

Easy-to-use jack makes RV setup fast and simple.



Electric Awning with LED Lighting

Easily operate your awning with the push of a button.



Jensen® Entertainment System

Designed specifically for RVs, Jensen DVD, CD and MP3 players are included with your new Springdale.



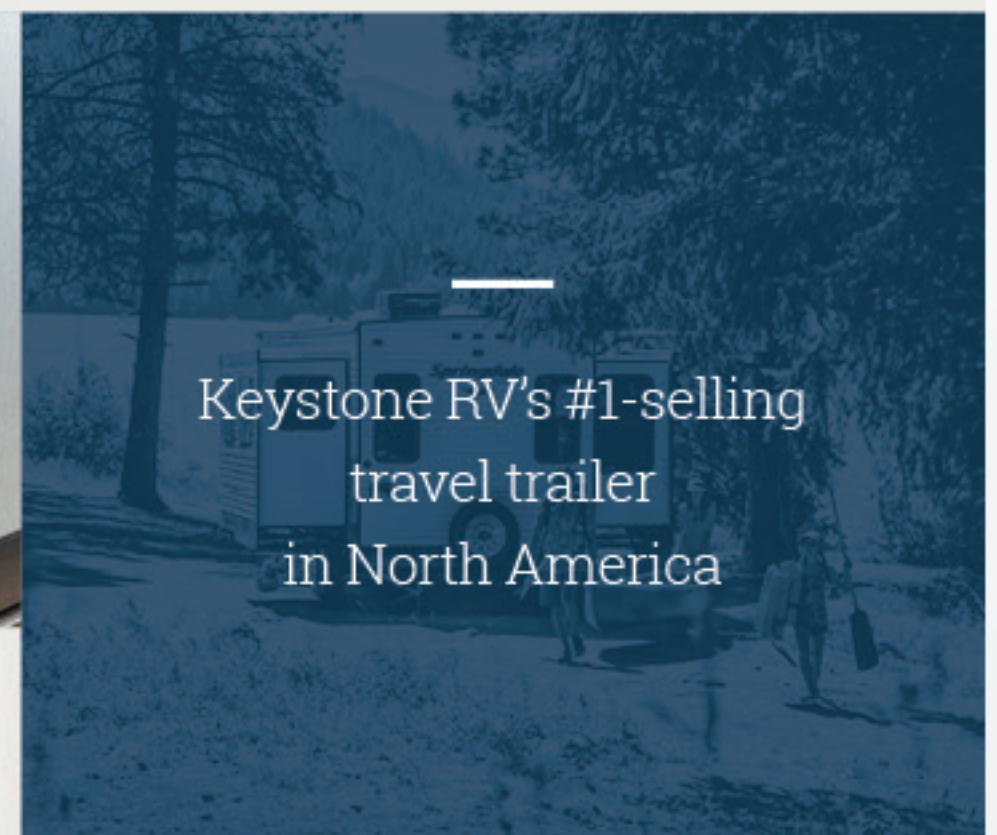
Decorative Backsplash

Gorgeous, easy-to-clean tile-look backsplash.



Furrion® Oven with Glass Cooktop

Chef-inspired appliances that give you the perfect blend of performance, precision and style.



Keystone RV's #1-selling
travel trailer
in North America



more product detail at
www.keystonerv.com/springdale



Settle for Stunning

To celebrate our 20th Anniversary, the Springdale design team looked to current trends to completely re-imagine travel trailer interior design. The result is nothing short of stunning.

Across the lineup, you will see expansive 82" arched ceilings, beautifully detailed tile kitchen backsplashes, sleek Furrion® appliances, gorgeous stacked stone fireplaces, bright washed-oak flooring, light marbled countertops and an abundance of natural light.

Springdale offers three décor options: Biscotti (above); Latte (above right); and Ozark (right)

Do-More Dinette

Springdale's new freestanding table provides owners with endless options. Lower the adjustable legs to create an additional sleeping space, or to use as a coffee table in the living room. Take the table outside for al fresco dining or for extra serving space. (Included with Next Level package, see pg. 8.)



Family-Sized Living

Plenty of room for the entire family. Bunks feature ultra-soft Teddy Bear™ mattresses.





more product detail at
www.keystonerv.com/springdale

Next Level Package

All Model Add-On
(n/a single axles)

Use the Next Level Package to add premium features and value to your Springdale RV

Additional Features Include:

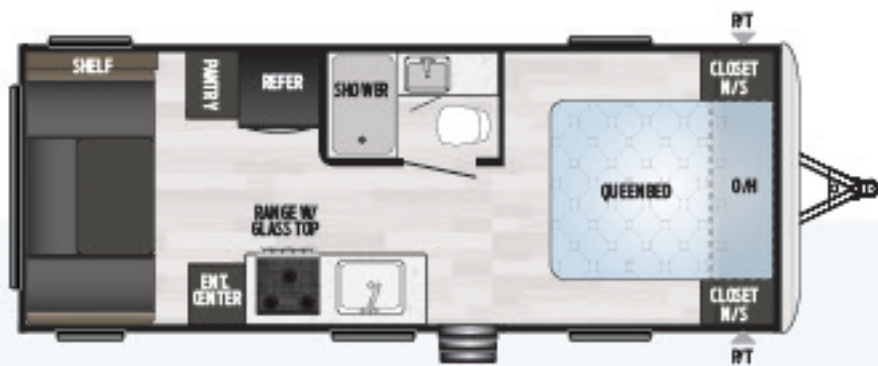
- Smooth metal front
- Power stabilizer jacks (n/a 202,260)
- 7 cu. ft. stainless steel refrigerator
- Decorative dinette light
- Do-More dinette table
- MORryde® Step Above entry step
- Tri-fold sofa (n/a 202, 260, 235)
- LED TV



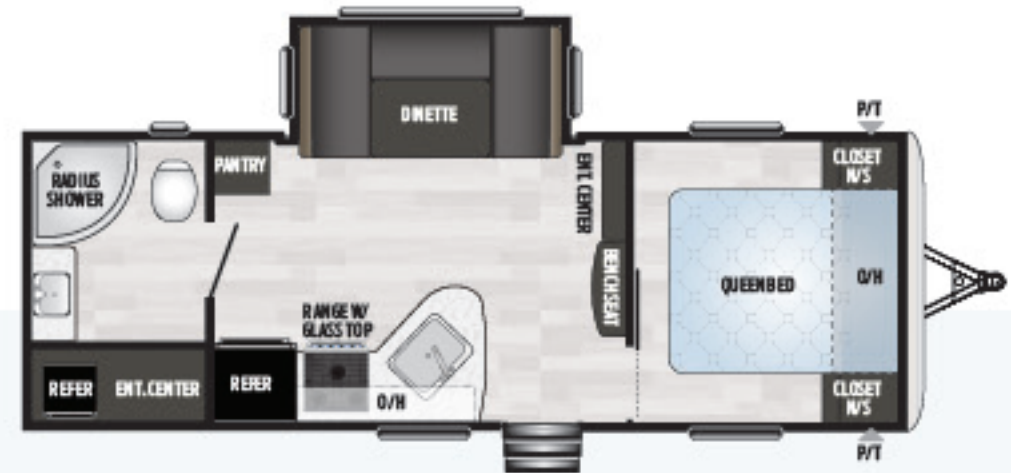
Springdale

TRAVEL TRAILERS

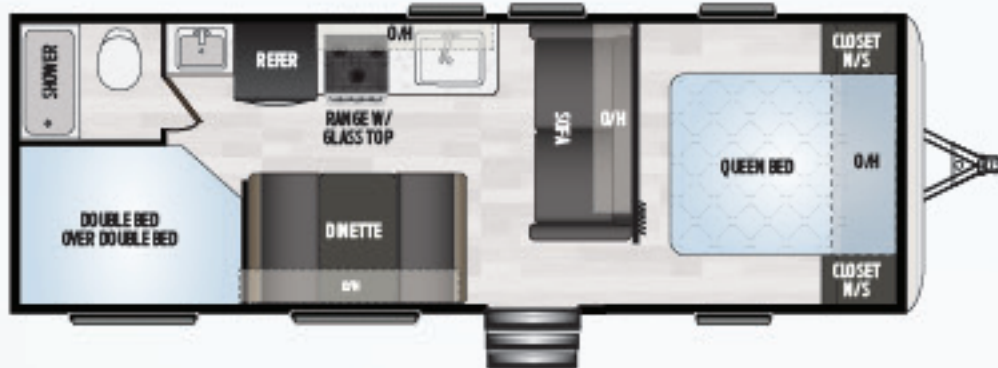
- Thermofoil pressed countertops
- Arched ceilings—82" height across the line-up
- Furrion® oven with glass cooktop and LED accent lights
- 6 cu. ft. gas/electric refrigerator
- Jensen® audio system with DVD/CD/MP3/Bluetooth
- Stainless steel microwave
- Hidden laundry chute
- Convenience center for slide rooms, lights, tank monitoring
- Single-basin undermount sink
- Cable TV hookups in all bedrooms
- Reversible bedspread
- Decorative backsplash
- Sliding windows in slide rooms
- Ultra-stable and secure MORryde® Step Above™ steps
- 30,000 BTU furnace
- Power tongue jack standard
- Black tank flush
- Outdoor TV prep and bracket
- Fully walkable roof
- Quick release gas line
- Backup camera prep
- Triple entry steps
- Exterior stereo speakers
- Tinted safety glass windows
- 24' x 8' Dyna Span® floor decking
- Triple-seal slide room system
- 3-year fully transferable limited structural warranty



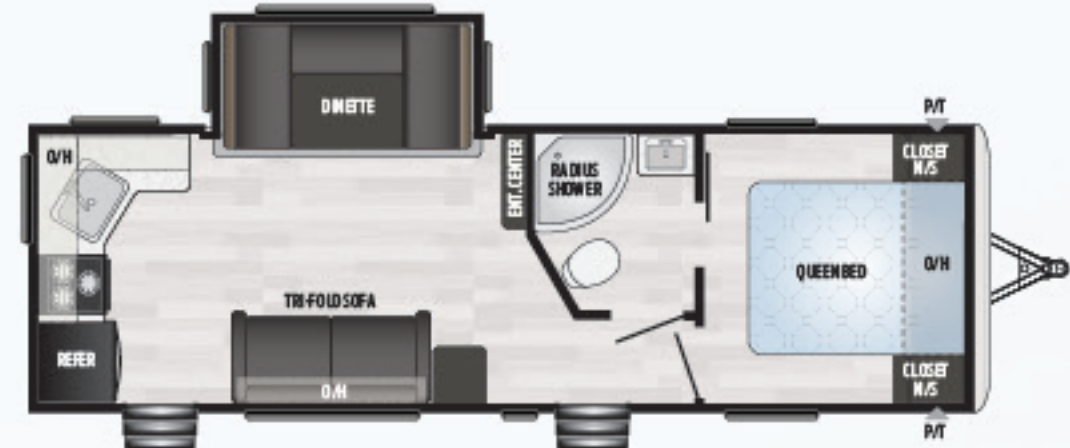
202RD | Rear dinette, queen walk-around bed
Weight: 4605 LBS. | Length: 24' 10"



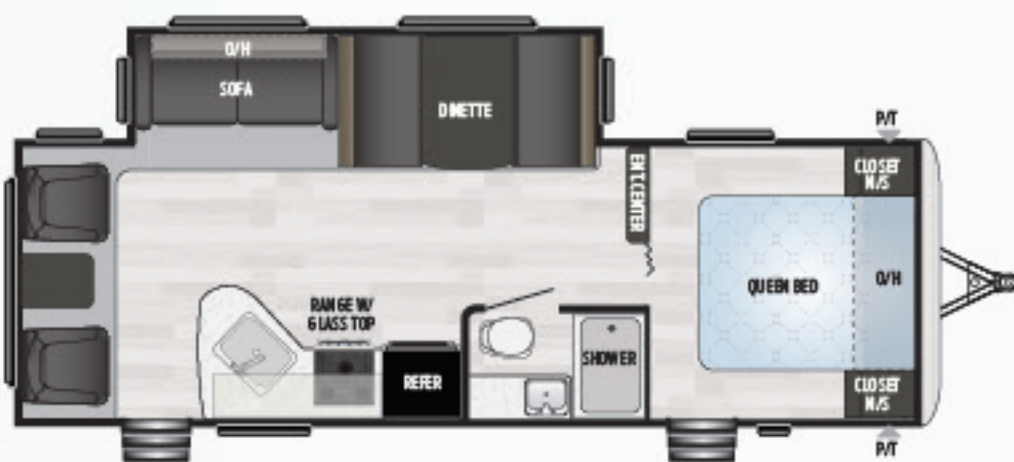
235RB | Large rear bathroom, lightweight, large outside kitchen
Weight: 6095 LBS. | Length: 27' 5"



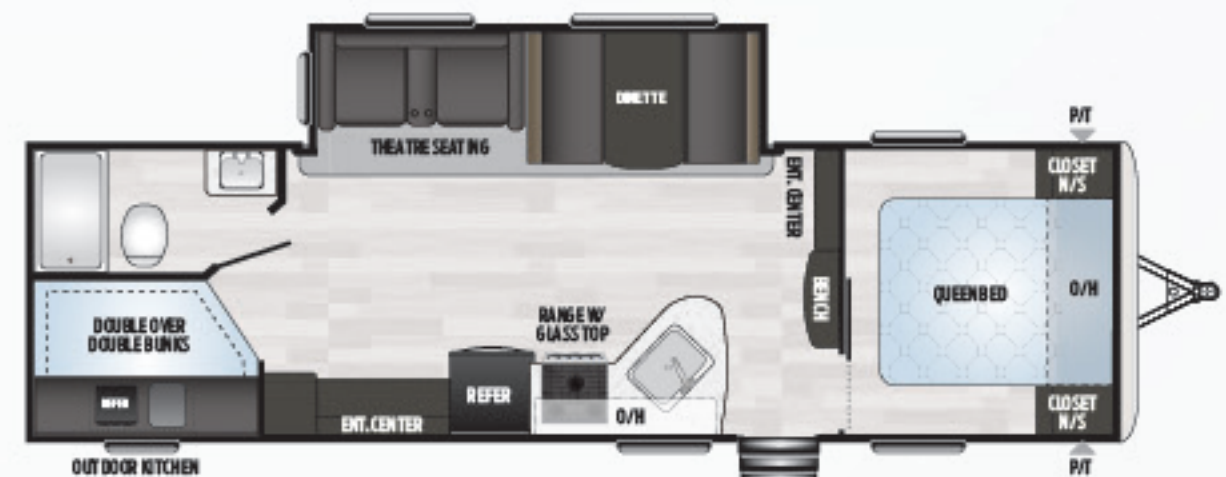
260BH | #1 selling bunkhouse, private master bedroom
Weight: 4941 LBS. | Length: 28' 10"



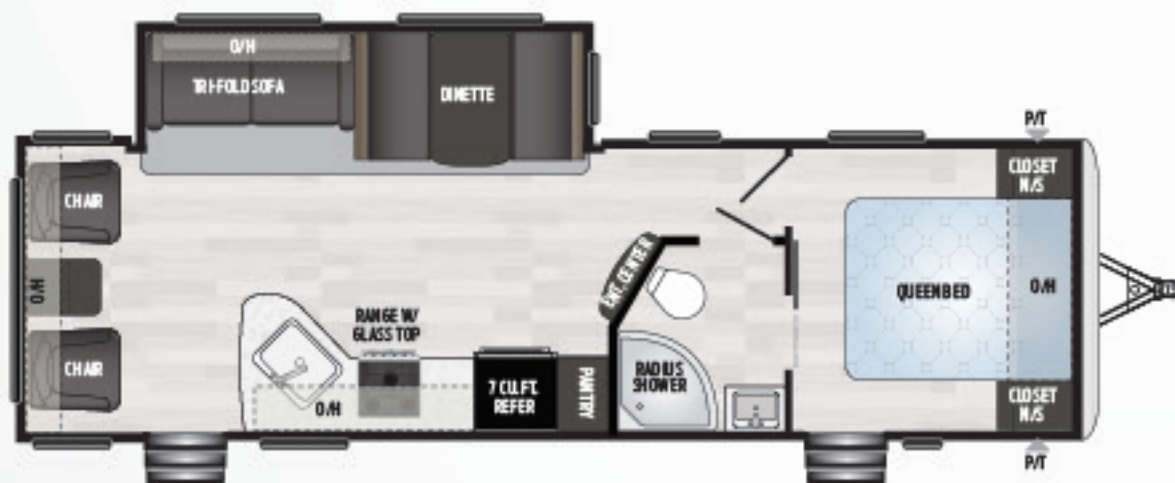
262RK | Rear kitchen, dual entrance, side-aisle bath
Weight: 6362 LBS. | Length: 30' 2"



266RL | Rear lounge, built for entertaining
Weight: 6094 LBS. | Length: 28' 11"



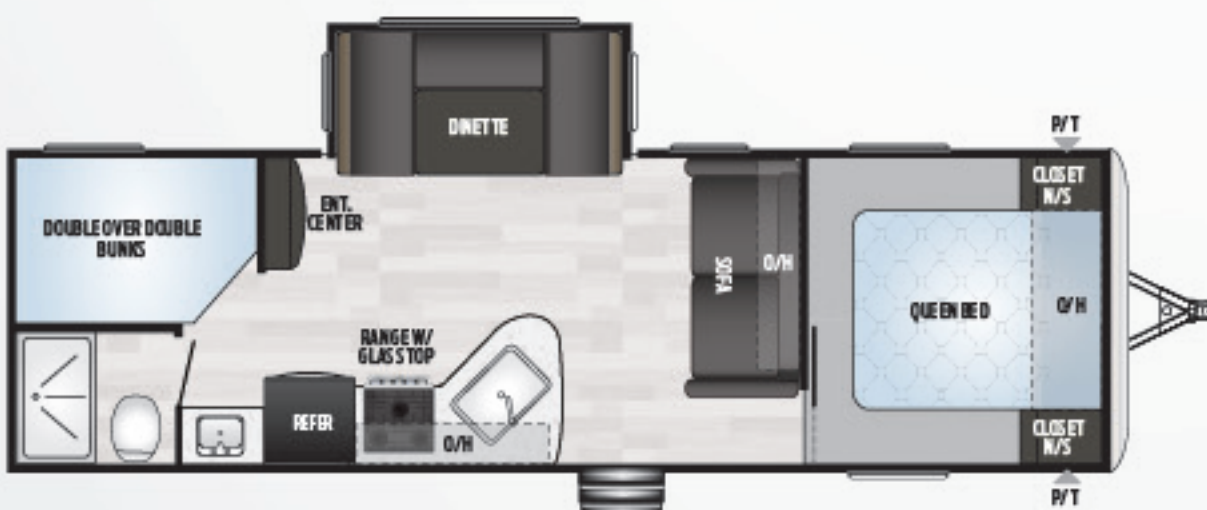
270BH | Double over double bunkhouse, 40" TV in theatre seating
Weight: 6907 LBS. | Length: 32' 11"



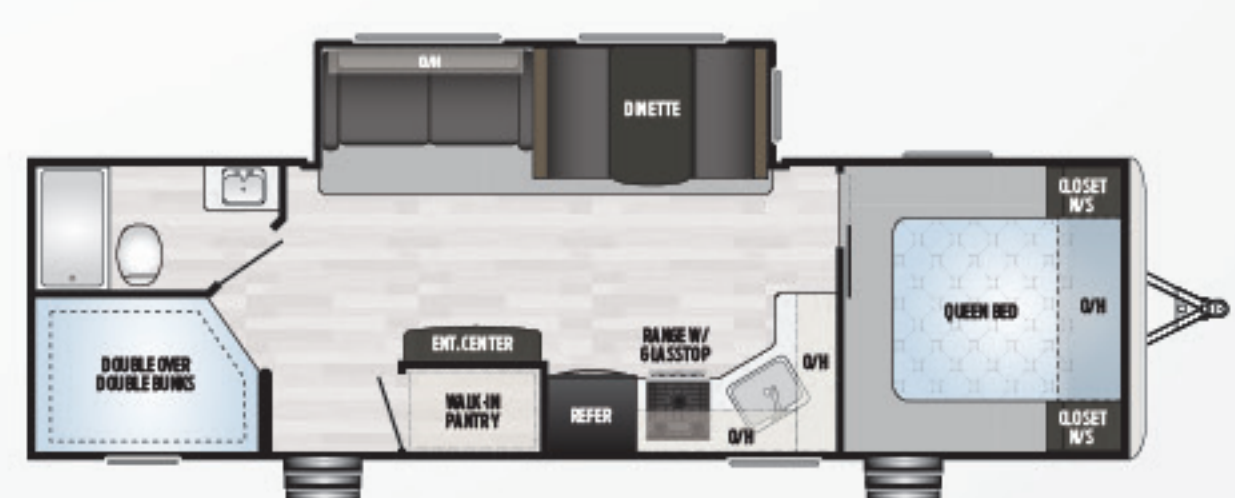
271RL | Rear living room, large kitchen packed with storage
Weight: 6981 LBS. | Length: 31' 10"



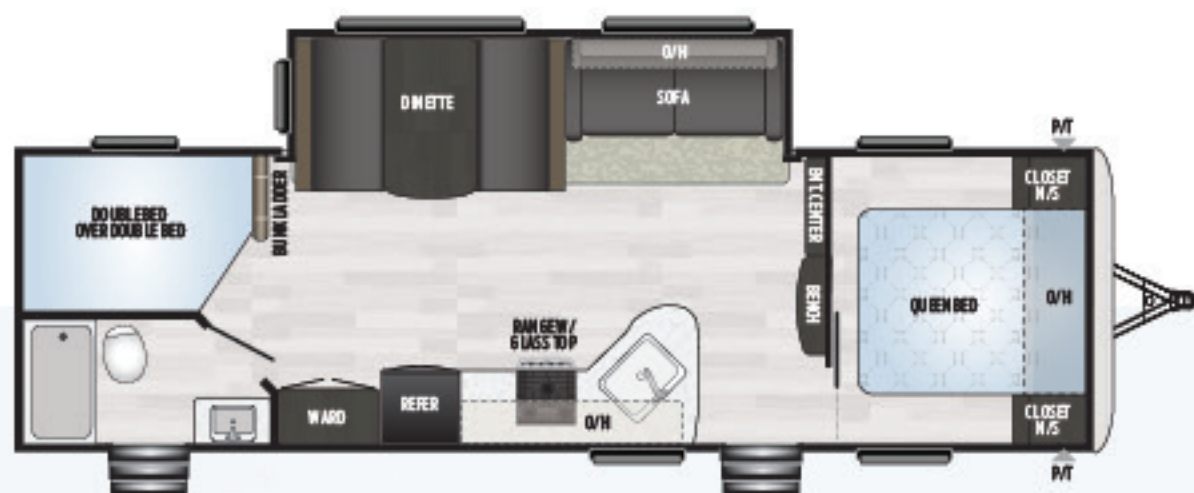
274RB | Rear bath focus, large walk-in pantry, outside kitchen
Weight: 7175 LBS. | Length: 31' 7"



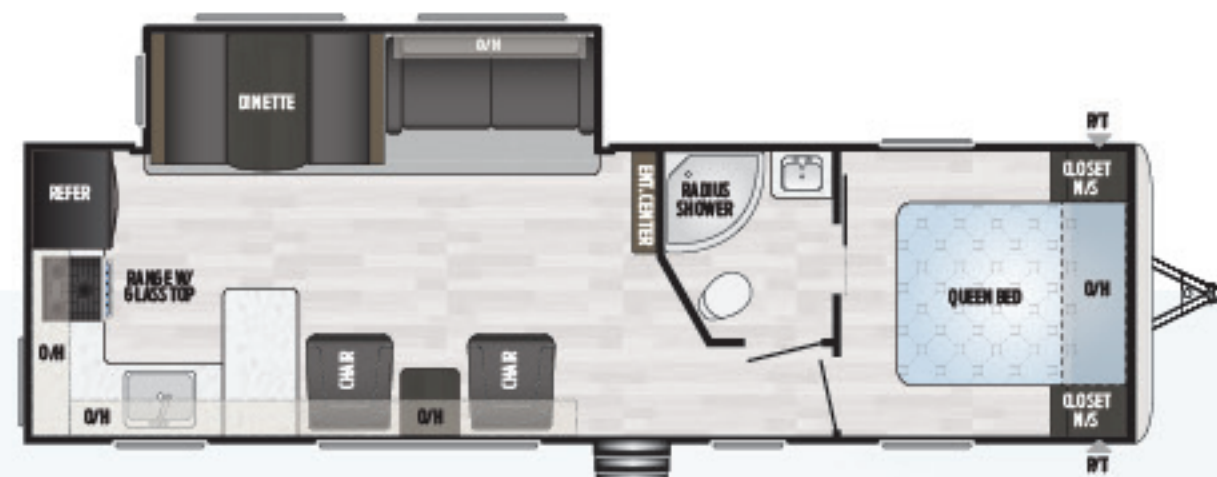
275BH | Bunkhouse, maximizing sleeping space, entertainment-focused
Weight: TBD LBS. | Length: TBD



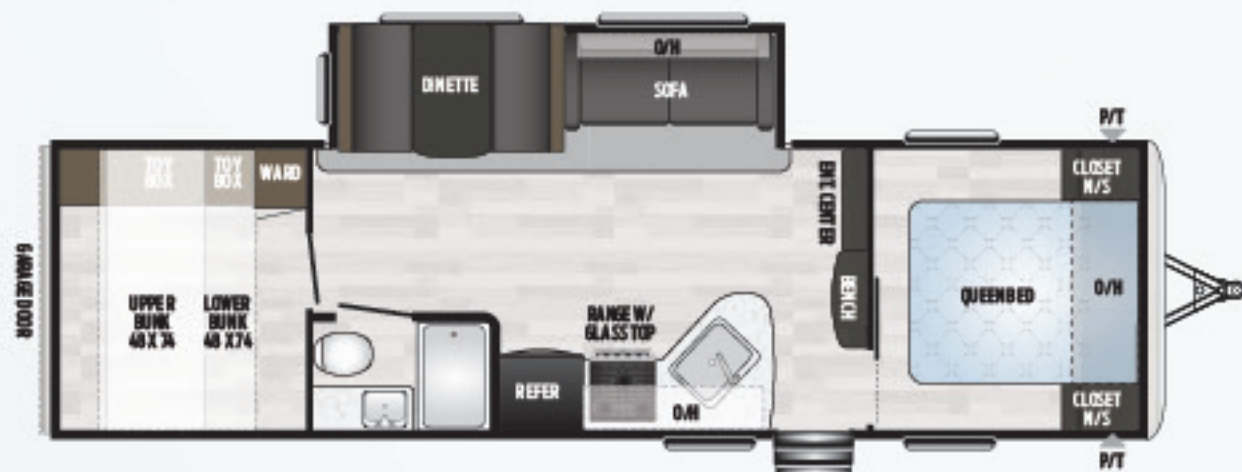
280BH | Bunkhouse, entertainment-focused, walk-in pantry, outside kitchen
Weight: 7206 LBS. | Length: 32' 11"



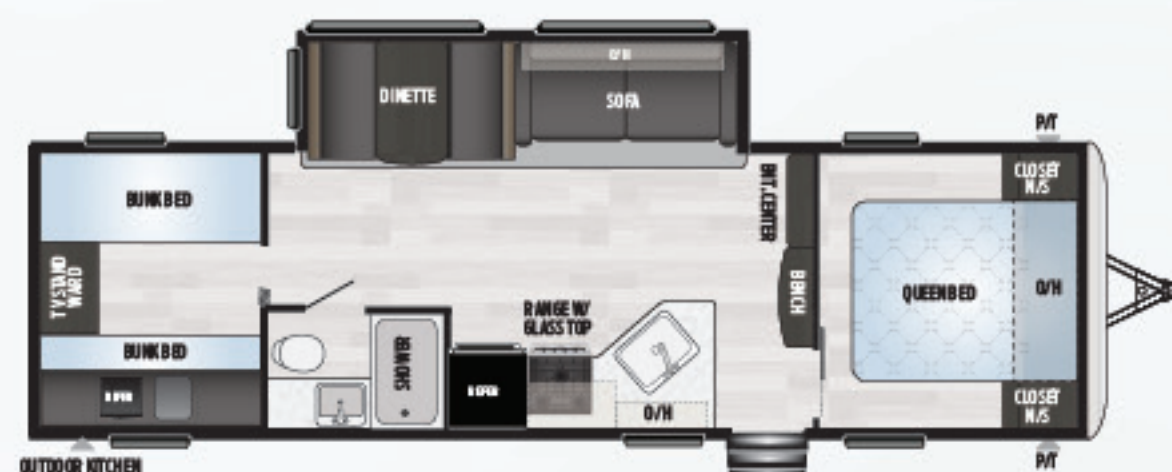
282BH | Bunkhouse, outside entrance to bath, private master bedroom
Weight: 6625 LBS. | Length: 32' 1"



293RK | Rear kitchen, huge countertop, amazing lounge area
Weight: 6721 LBS. | Length: 33' 4"



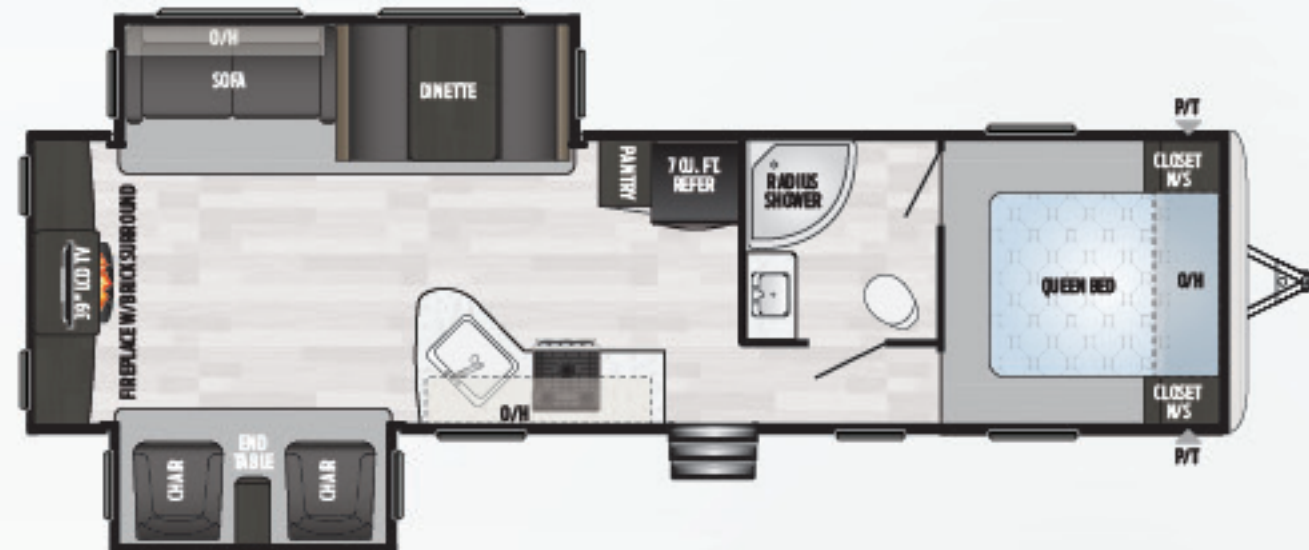
296BH | Rear garage storage, private bunkhouse, double-over-double
Weight: 7085 LBS. | Length: 33' 2"



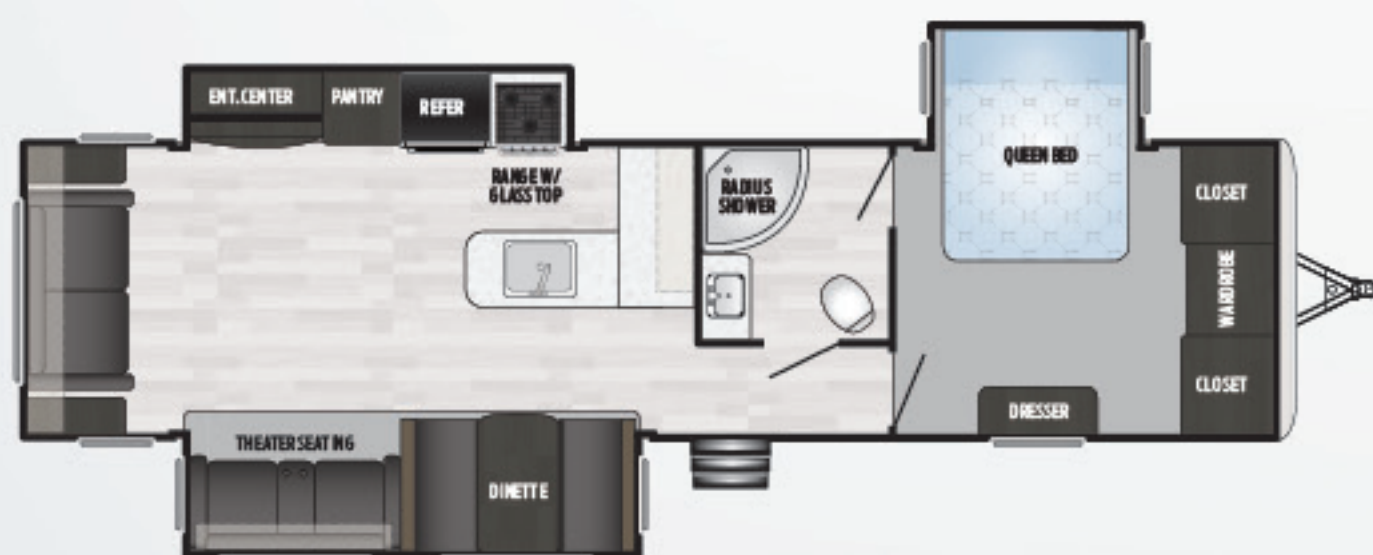
298BH | Private bunkroom, private master bedroom, outside kitchen
Weight: 6860 LBS. | Length: 32' 8"



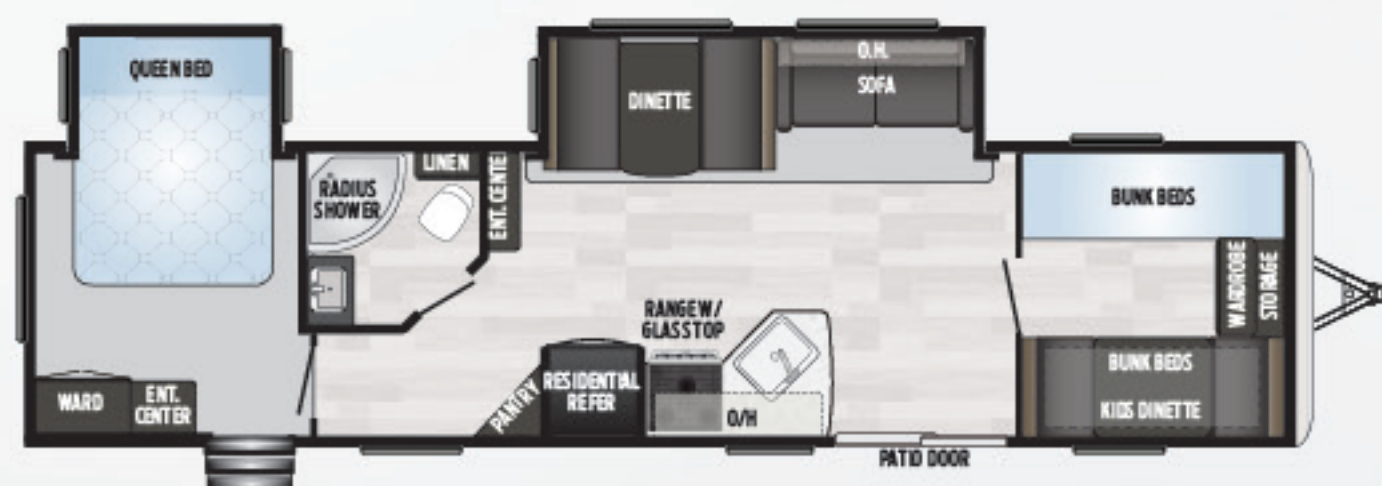
303BH | Private bunkroom, featuring gaming chairs, dual-entry, private master
Weight: 8060 LBS. | Length: 35' 0"



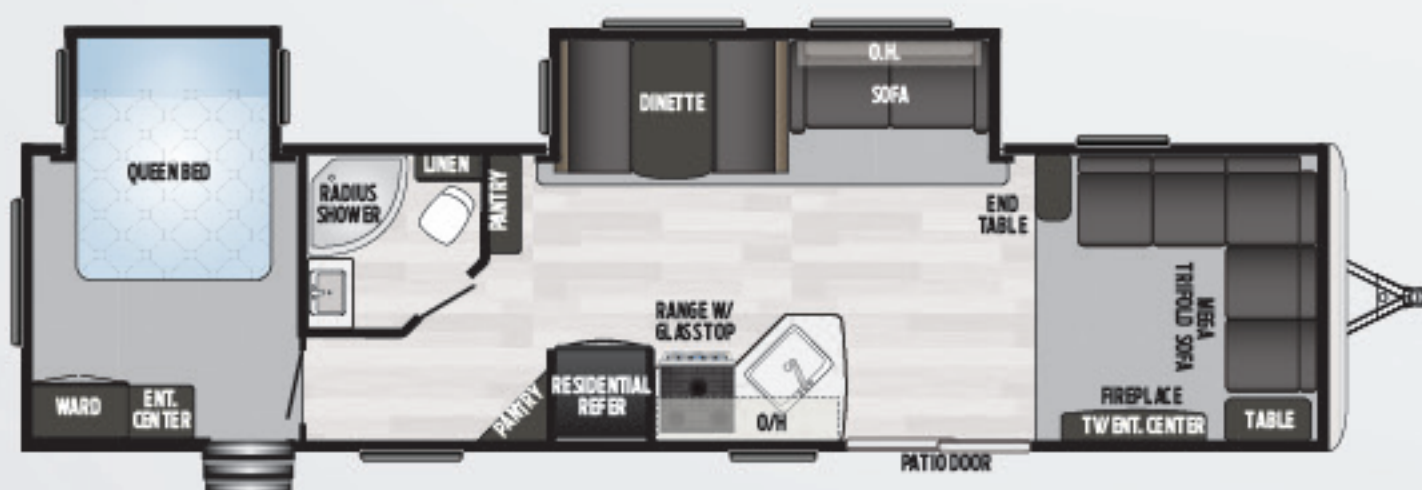
311RE | Entertainment-focused, 2 slides, brick fireplace, master suite
Weight: 8409 LBS. | Length: 35' 7"



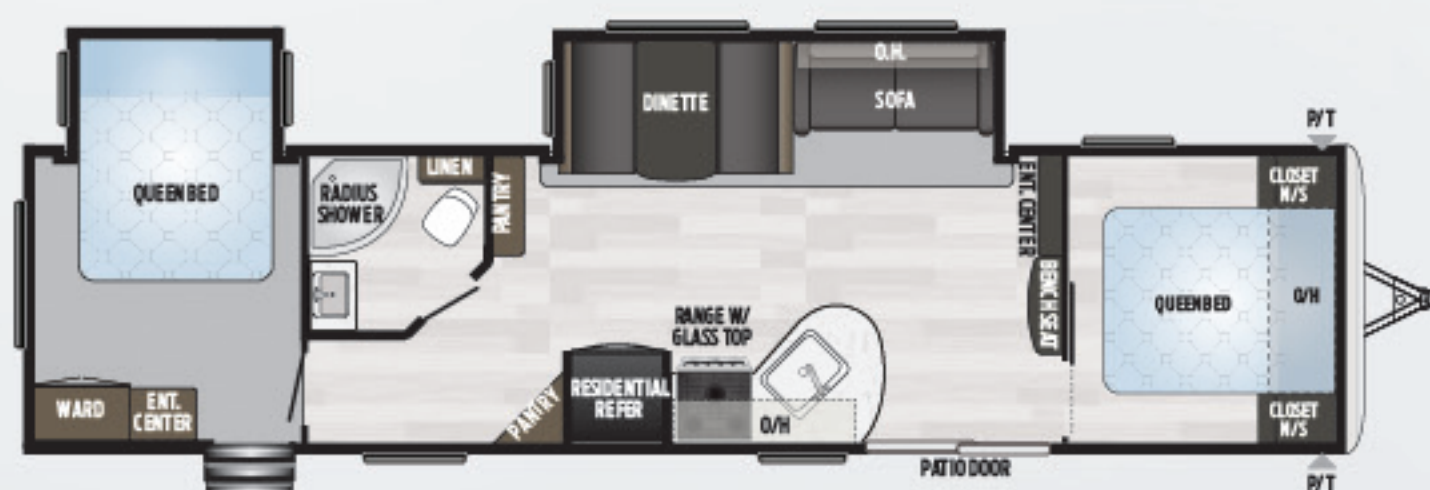
333RE | Rear entertainment, 3 slides (inc. master bedroom), extreme kitchen
Weight: 9175 LBS. | Length: 37' 3"



38BH | Built for comfort, sleeps up to 10, glass patio door, private bedrooms
Weight: 8675 LBS. | Length: 38' 11"



38FL | Amazing front lounge, fireplace with brick, entertainment-focused
Weight: 8576 LBS. | Length: 38' 11"

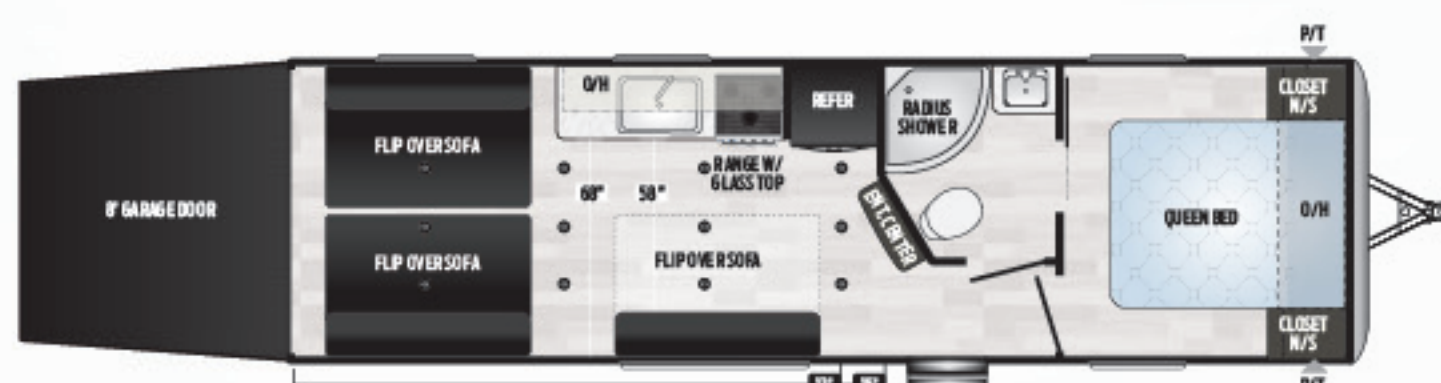


38FQ | Front queen, two-slide w/ deluxe kitchen & Springdale mud room
Weight: 8655 LBS. | Length: 38' 11"

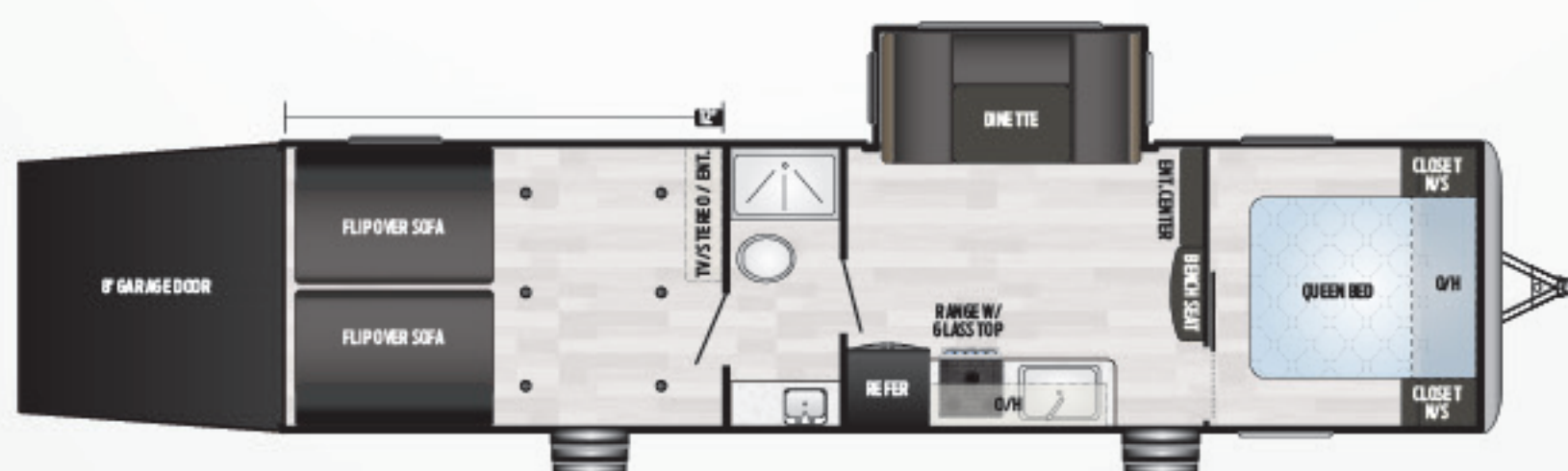
Springdale

TAILGATOR TOY HAULERS

- Springdale re-launches the original Keystone toy hauler brand
- Thermofoil pressed countertops
- Skylight over shower and tub
- Arched ceilings
- Larger garage floor space
- Power tongue jack
- Jensen® stereo and speaker system
- 7 cu. ft. stainless steel refrigerator
- Springdale's EXCLUSIVE "Do-More" dinette table
- Glass accent overhead cabinet doors in kitchen
- Ultra-stable and secure MORryde® Step Above™ steps
- Textured backsplash
- LED interior lighting
- Furrion® oven with glass cooktop & LED accent lights
- Black night shades
- Smooth metal front with diamond plate rock guard
- Fully walkable roof
- Built for tailgating and hauling toys
- Exterior TV hookups
- Outside shower
- Laundry chute
- 50 AMP service
- 3-year, fully transferable limited structural warranty



27TH | New toy hauler, featuring a 13' garage, master suite
Weight: 6025 LBS. | Length: 31' 4"



32TH | Toy hauler, enclosed 12' garage, dinette slide room
Weight: 7355 LBS. | Length: 36' 4"



more product detail at
www.keystonerv.com/springdale

Springdale

SINGLE-AXLE MINI TRAVEL TRAILERS

- 8' wide body
- Solid wood cabinet doors
- 78" interior height
- LED interior lights
- Gas-strutted entry door
- Front diamond plate rock guard
- Front and rear stabilizer jacks
- Exterior speakers
- AM/FM stereo with Bluetooth
- 6-gallon gas/electric water heater
- 2-burner cooktop
- Reversible bedspread
- Seamless floor decking
- 20 lb. propane tank
- 3-year, fully transferable limited structural warranty



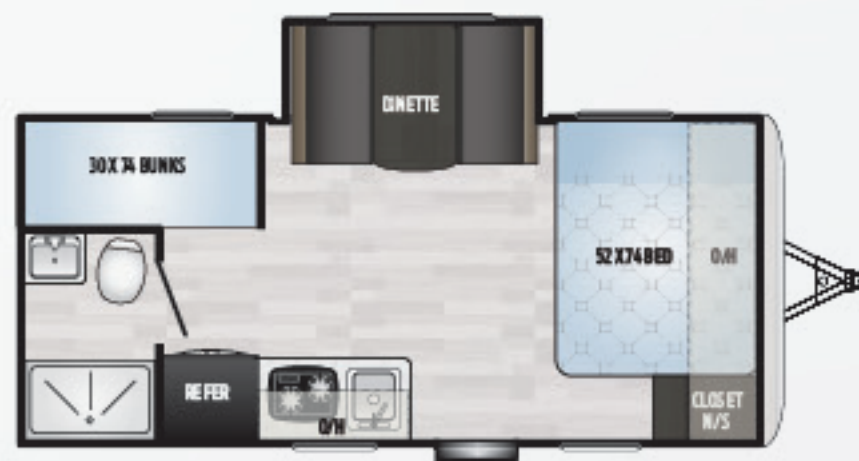
1700FQ

Walk-around front queen bed, huge bathroom
 Weight: 3237 LBS. | Length: 21' 5"



1750RD

Rear dinette, amazing view, incredible countertop space
 Weight: 3309 LBS. | Length: 21' 5"



1760BH

Dinette slide room, 13.5 A/C, 6 cu. ft. refrigerator
 Weight: 3735 LBS. | Length: 21' 5"



1790FQ

Dinette slide room, large bathroom, couple's coach
 Weight: 3720 LBS. | Length: 21' 5"



1800BH

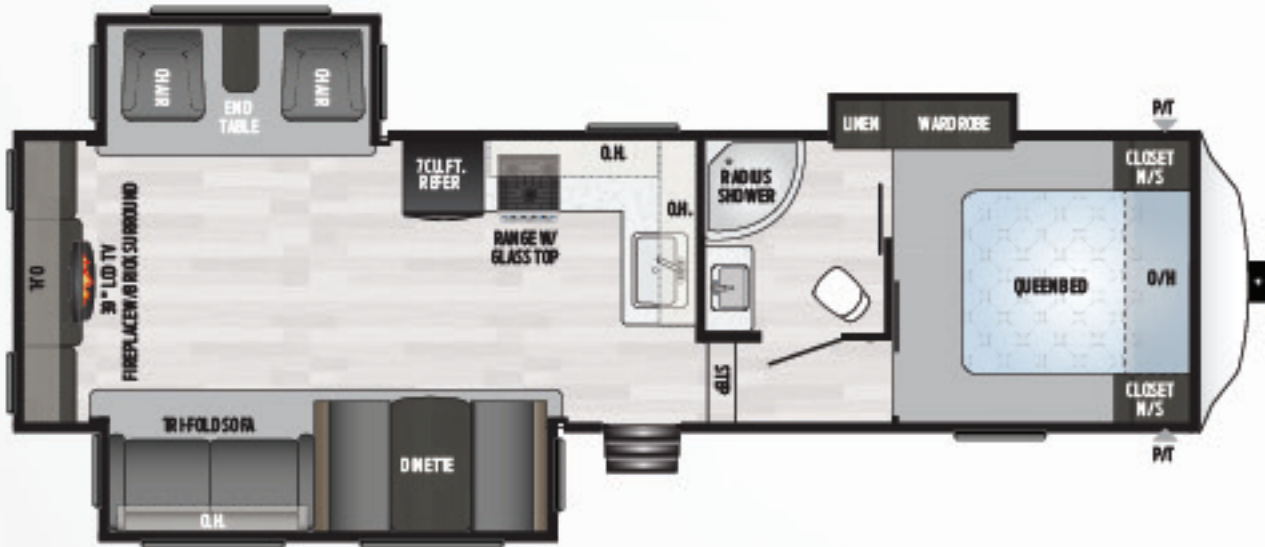
#1 selling floorplan, bunkhouse, outside speakers
 Weight: 3295 LBS. | Length: 21' 5"

Springdale

FIFTH WHEELS

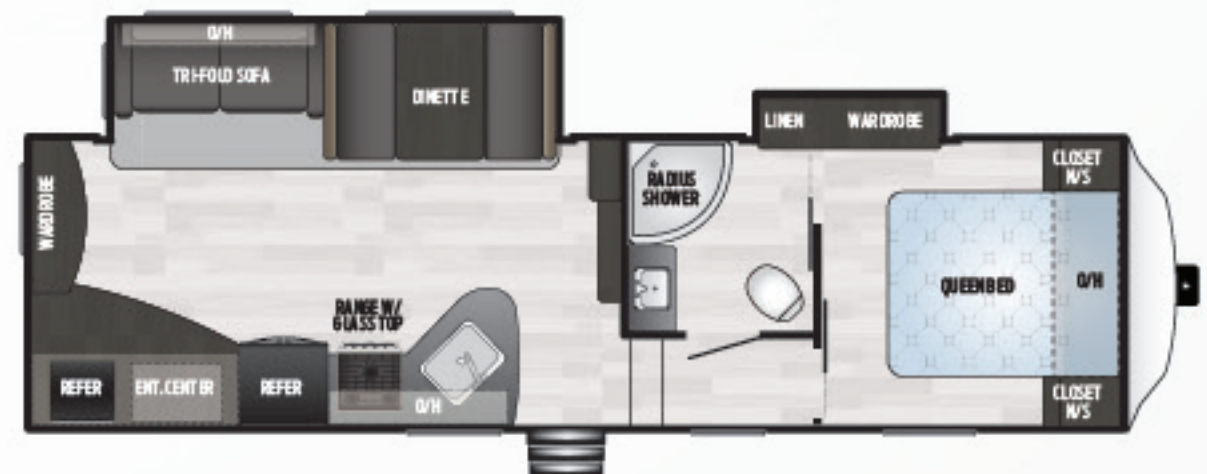
- Affordable fifth wheel luxury
- Thermofoil pressed countertops
- Laminated fiberglass sidewalls
- 50 AMP service
- Hardwood cabinet doors
- Wardrobe slide room
- Furrion® oven with glass cooktop and LED accent lights
- Convenience center for slide rooms, lights and tank monitoring
- Free-standing table and chairs, optional
- Front cap
- Backup camera prep
- 40" television
- Fully walkable roof

- Exterior speakers
- Triple-seal slide systems
- Fully enclosed and heated underbelly
- 30 lb. LP tanks
- Number/color-coded wiring system for easy troubleshooting and repair
- Dexter® E-Zube® axles
- Decorative backsplash
- Reversible bedspread
- 30,000 BTU furnace
- Stainless steel appliances
- Sliding windows in slide rooms
- Triple entry steps
- 3-year, fully transferable limited structural warranty



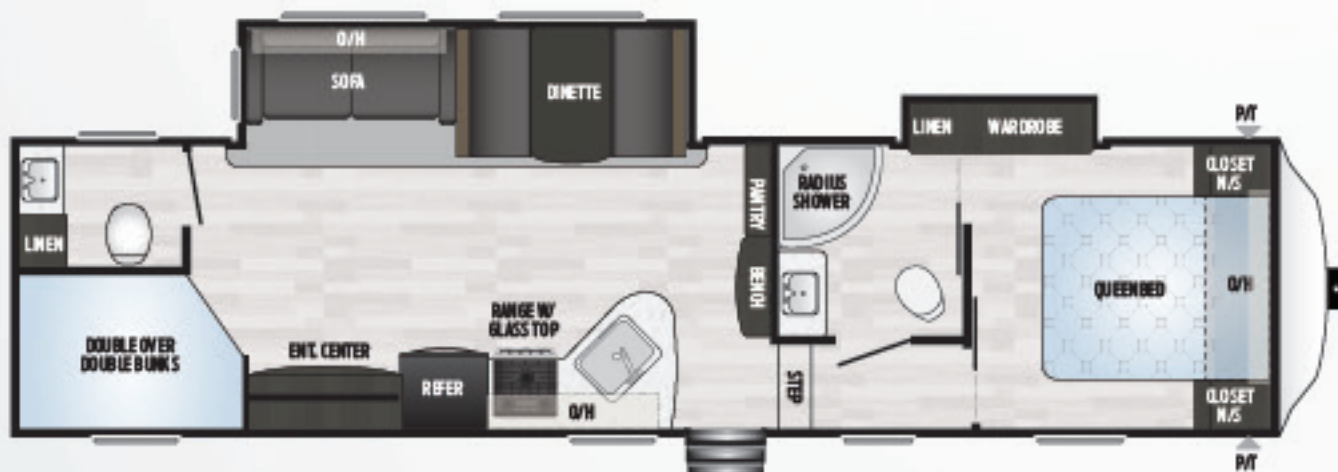
253FWRE

3 slides, rear entertainment, fireplace, recliners
Weight: 8591 LBS. | Length: 32' 10"



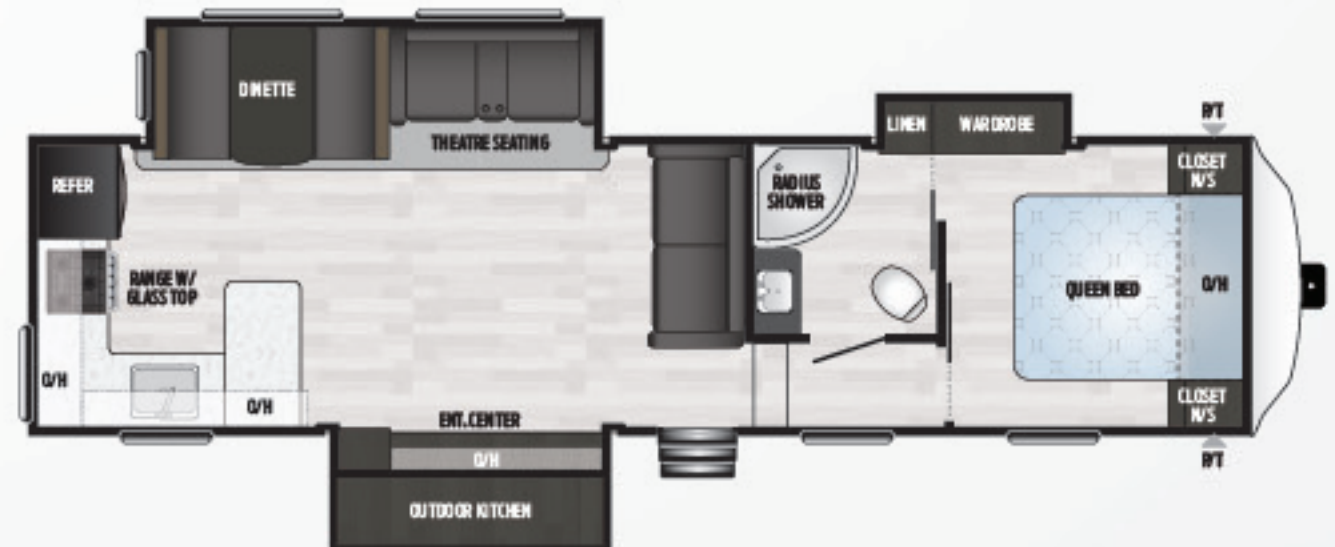
272FWRE

2 slides, rear entertainment, outside kitchen
Weight: 7790 LBS. | Length: 30' 2"



300FWBH

Bunkhouse, one and a half bath, wardrobe slide, outside kitchen
Weight: 8670 LBS. | Length: 34' 10"



302FWRK

Rear kitchen, tri-fold sofa and theatre seating, outside kitchen
Weight: 8911 LBS. | Length: 33' 9"

TRAVEL TRAILERS

MODEL	WEIGHT	CARRYING CAPACITY	HITCH WEIGHT	FRESH WATER	WASTE WATER	GRAY WATER	LPG	LENGTH*	HEIGHT
202RD	4605	2108	565	52	30	30	40	24' 10"	10' 11"
235RB	6095	1700	795	52	39	78	60	27' 5"	11' 3"
260BH	4941	2569	510	52	39	30	40	28' 10"	10' 6"
262RK	6362	1388	750	52	30	78	60	30' 2"	11' 3"
266RL	6094	1551	645	52	39	39	40	28' 11"	10' 11"
270BH	6907	2678	785	52	39	60	60	32' 11"	11' 3"
271RL	6981	2719	935	52	39	30	60	31' 10"	11' 3"
274RB	7175	2345	720	52	39	69	60	31' 7"	11' 3"
275BH	TBD	TBD	TBD	TBD	TBD	TBD	TBD	TBD	TBD
280BH	7206	2394	805	52	39	60	60	32' 11"	11' 3"
282BH	6625	1975	690	52	39	69	40	32' 1"	11' 3"
293RK	6721	2079	830	52	30	69	40	33' 4"	10' 11"
296BH	7085	2635	920	52	30	39	40	33' 2"	10' 11"
298BH	6860	2620	685	52	30	39	40	32' 8"	10' 11"
303BH	8060	1710	970	52	39	39	60	35' 0"	11' 4"
311RE	8409	1351	960	52	39	78	60	35' 7"	10' 11"
332RB	9274	2101	1215	52	30	78	60	37' 7"	10' 11"
333RE	9175	2175	1155	52	39	39	60	37' 3"	10' 11"
38BH	8675	2480	995	56	39	69	60	38' 11"	11' 4"
38FL	8576	2529	945	56	39	69	60	38' 11"	11' 4"
38FQ	8655	2480	975	56	39	69	60	38' 11"	11' 4"

FIFTH WHEELS

MODEL	WEIGHT	CARRYING CAPACITY	HITCH WEIGHT	FRESH WATER	WASTE WATER	GRAY WATER	LPG	LENGTH*	HEIGHT
253FWRE	8591	1709	1500	52	39	39	60	32' 10"	12' 4"
272FWRE	7790	2510	1625	52	39	78	60	30' 2"	12' 0"
300FWBH	8670	1680	1555	52	69	78	60	34' 10"	12' 2"
302FWRK	8911	1409	1520	52	39	78	60	33' 9"	12' 2"

TOY HAULERS & SINGLE AXLES

MODEL	WEIGHT	CARRYING CAPACITY	HITCH	FRESH WATER	WASTE WATER	GRAY WATER	LPG	LENGTH*	HEIGHT
27TH	6025	3665	895	52	30	39	60	31' 4"	11' 3"
32TH	7355	2545	1200	52	39	78	60	36' 4"	11' 3"
1700FQ	3237	1203	480	27	30	32	20	21' 5"	10' 2"
1750RD	3309	1091	520	27	30	30	20	21' 5"	10' 2"
1760BH	3735	765	520	27	30	30	20	21' 5"	10' 2"
1790FQ	3720	760	480	27	32	30	20	21' 5"	10' 2"
1800BH	3295	1105	485	27	30	30	20	21' 5"	10' 2"

DISCLAIMER: Product information is as accurate as possible as of the date of publication of this brochure. All features, floor plans, and specifications in this brochure are subject to change without notice. Please also consult Keystone's web site at www.keystonerv.com for more current product information and specifications. Tow Vehicle Disclaimer. CAUTION: Owners of Keystone recreational vehicles are solely responsible for the selection and proper use of tow vehicles. All customers should consult with a motor vehicle manufacturer or their dealer concerning the purchase and use of suitable tow vehicles for Keystone products. Keystone disclaims any liability or damages suffered as a result of the selection, operation, use or misuse of a tow vehicle. KEYSTONE'S LIMITED WARRANTY DOES NOT COVER DAMAGE TO THE RECREATIONAL VEHICLE OR THE TOW VEHICLE AS A RESULT OF THE SELECTION, OPERATION, USE OR MISUSE OF THE TOW VEHICLE. *Length is defined as the distance from the centerline of hitch pin/coupler to rear bumper of trailer. Please review owner's manual prior to purchase for more information on service warranties, extended use, towing and maintenance. Owner's manuals can be found at keystonerv.com.

Springdale

TT / FW STANDARDS/OPTIONS

	TT	FW	TH	SINGLE
INTERIOR STANDARD FEATURES				
Range hood w/ light and exhaust fan	•	•	•	
Furrion® oven w/glass top and LED lights	•	•	•	
LED lighting	•	•	•	•
6 cu. ft. gas/electric refrigerator	•		•	
7 cu. ft. gas/electric refrigerator		•		
DVD/CD/MP3/Bluetooth stereo	•	•	•	
CD/Bluetooth radio				•
Stainless steel microwave	•	•	•	•
Decorative residential light fixture in slide		•		
Hidden laundry chute (most models)	•		•	
Single-basin undermount sink	•	•	•	•
Cable TV hookup w/booster	•	•	•	•
Solid hardwood cabinetry	•	•	•	•
Reversible bedspread	•	•	•	•
Teddy Bear™ bunk mattresses	•	•	•	•
Bathroom exhaust fan	•	•	•	
Decorative hi-def backsplash	•	•	•	
Quick recovery 6-gallon gas DSI water heater	•	•	•	•
8000 BTU Air Conditioner				•
13,500 BTU ducted air conditioner w/ thermostat	•	•	•	
20,000 BTU furnace				•
30,000 BTU furnace	•	•	•	
12V 55 AMP converter	•	•	•	•
Operable windows in slide-out	•	•	•	
EXTERIOR STANDARD FEATURES				
Laminated sidewalls w/ aluminum framework		•		
Mega pass-through storage compartment	•	•	•	•
Dexter® E-Z Lube axles	•	•	•	•
E-Coated corrosion-resistant wheels	•	•	•	•
2 interior and 2 all-weather exterior speakers	•	•	•	•
Quick-release gas line	•	•	•	
Seamless, one piece TPO roof membrane	•	•	•	•
Fully walkable roof	•	•	•	
Diamond plate rock guard	•		•	•
Triple entry steps on main door	•	•	•	
Single entry step on main door				•

	TT	FW	TH	SINGLE
Tinted safety glass windows	•	•	•	•
4G LTE and Wi-Fi ready	•	•	•	
Extended rain gutters	•	•	•	•
Furrion® backup camera/observation prep	•	•	•	
CONSTRUCTION STANDARD FEATURES				
24' x 8' Dyna Span® subflooring	•	•	•	•
2" x 3" floor joists, 12" on center	•	•	•	•
Floorplan-specific frame	•	•	•	•
Full width outriggers	•	•	•	•
Triple-seal slide w/ steel C-channel moisture barrier	•	•	•	•
Tuf-Lok™ crush-resistant ductwork couplers	•	•	•	•
Color-coded unified wiring system	•	•	•	•
3-year fully transferable Limited Structural Warranty	•	•	•	•

SPRINGDALE TRAVEL TRAILER & TOY HAULER 20TH ANNIVERSARY PACKAGE (MANDATORY) -- EXCLUDING MINI'S

Vaulted ceiling; power tongue jack; upgraded pressed countertops; LED adjustable power awning; central monitoring panel; external tv hookup/mount; bedroom tv prep; heated & enclosed underbelly (slide models); booth accent lighting; spare tire & carrier

SPRINGDALE "NEXT LEVEL" PACKAGE (266RL, 270BH, 271RL, 274RB, 280BH, 282BH, 293RK, 296BH, 298BH, 303BH, 311RE, 332RB, 333RE)

Smooth front metal; power stabilizer jacks; 7 cu. ft. stainless refrigerator; LED tv; tri-fold sleeper sofa; "do-more" free-standing dinette; aluminum alloy wheels; decorative light fixture in slide

SPRINGDALE "NEXT LEVEL" PACKAGE (MANDATORY FOR 27TH, 32TH) (235RB, 262RK, 27TH, 32TH)

Smooth front metal; power stabilizer jacks; 7 cu. ft. stainless refrigerator; LED tv; "do-more" free-standing dinette; aluminum wheels; decorative light in slide

SPRINGDALE "NEXT LEVEL" PACKAGE (MANDATORY) (38BH, 38FL, AND 38FQ)

Smooth front metal; tri-fold sleeper sofa; led tv; "do-more" free-standing dinette; aluminum alloy wheels

SPRINGDALE "NEXT LEVEL" PACKAGE (202RD AND 260BH)

Smooth front metal, 7 cu. ft. stainless refrigerator; LED TV; "do-more" free-standing dinette, aluminum alloy wheels, decorative light in slide

SPRINGDALE FIFTH WHEEL 20TH ANNIVERSARY PACKAGE (MANDATORY) (253FWRE, 272FWRE, 300FWBH, 302FWRK)

Upgraded pressed countertops; LED adjustable power awning; central monitoring panel, external TV hookup/mount; bedroom TV prep; heated & enclosed underbelly; booth accent lighting; spare tire & carrier; 50 AMP service, wired/braced for 2nd A/C.

OTHER OPTIONS (N/A ON SPRINGDALE MINI SINGLE-AXLE TRAVEL TRAILERS)

50 AMP service, wired and braced for 2nd A/C Available on: 27TH, 270BH, 271RL, 274RB, 280BH, 282BH, 293RK, 296BH, 298BH, 303BH, 311RE, 332RB, 333RE, 388H, 38FL, 38FQ)

15,000 BTU A/C IPO 13,500 BTU A/C

FREE-STANDING TABLE AND CHAIRS (SELECT MODELS)

SPRINGDALE SINGLE AXLE MINI ONLY OPTION

13,500 BTU direct-blow A/C (replaces the 8000 BTU, side-mount A/C)

TT Travel Trailers
FW Fifth Wheels
TH Tailgator Toy Hauler Travel Trailers
SINGLE Single-Axle Mini Travel Trailers

BUILT FOR THE LONG HAUL



PRINT 1.2019



**Keystone RV
Company**