

TRAVEL TRAILERS BY DUTCHMEN

# ASPEN TRAIL



**Introducing the new  
ASPEN TRAIL LE**



**Dutchmen®**

Legendary Innovation. Trailblazing Value.



**INDUSTRY  
LEADING**

**82"**  
**CEILING  
HEIGHT**

(72" INSIDE  
SLIDE ROOMS)

### **A STANDING OVATION**

Featuring an impressive 82" interior height (6-ft. in slide room), getting around your trailer isn't an issue, it's figuring out what to do with all your indoor space.

# **GO ON THE JOURNEY OF A LIFETIME WITH THE ASPEN TRAIL**

With a name that reminds you of beautiful mountain vistas and once-in-a-lifetime excursions, the Aspen Trail is one travel trailer that lives up to its name, then exceeds all expectations.

With the Aspen Trail, you'll journey with wall-to-wall interior features, like an undermount farmstyle sink, 3 burner range with oven, high output furnace, real maple hardwood doors and drawers, and 82" interior ceiling height. Plus, you'll have peace of mind in any location with mega pass-thru storage that has oversized baggage doors on both sides, a heated and enclosed underbelly, and seamless one piece roof. The only thing the Aspen Trail can't do is plan your next adventure... but it can try.



### **AN EXPANSIVE AWNING**

Coming standard with a power awning with LED lights, the Aspen Trail lets you stay close to Mother Nature whether it's rain or shine.

2480RBS

2910BHS



### FRONT TO BACK FREEDOM

Every inch of the Aspen Trail has been designed for full-featured living, from the amenity-rich kitchen area with farm-style sink and cover, to the ample amounts of additional storage space and radius overhead cabinets for keeping essentials close at hand.

### 1. ROOM TO STRETCH

The bedroom features wardrobe storage with an overhead shelf and reading lights, while delivering travelers with a 60x80 Residential Queen Everdream Mattress.

### 2. SLEEPING SPACE

Select Aspen Trail bunk bed floorplans are configured to have extra seating areas, transforming the space from a standard bunkhouse to a game room.

### 3. MORE STORAGE

Oversized entertainment centers keep plenty of movies, books, and anything else you want to take with you on the road.

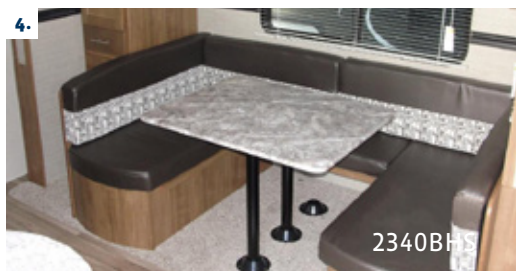


### 4. CONVERTIBLE DINETTE

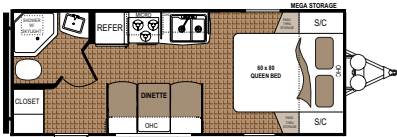
With the option to set up as straight or U-shaped, the industry-leading convertible dinette comfortably sits a group of adults as well as a family. At night, arrange the cushions into a bed to accommodate extra sleeping campers.

### 5. TAKE IT OUTSIDE

Enjoy the pleasure of cooking outdoors while entertaining your neighbors with the convenient outdoor kitchen on select Aspen Trail floorplans.

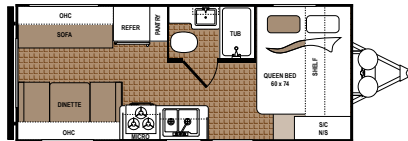


# ASPEN TRAIL FLOORPLANS



## ASPEN TRAIL | 1900RB

Ext. Length: 24' 8" Ext. Height: 10' 8"  
Average Shipping Weight: 4,107 Sleeps: 2-3



## ASPEN TRAIL | 1930RDWE\*

Ext. Length: 22' 11" Ext. Height: 10' 8"  
Average Shipping Weight: 4,183 Sleeps: 3-4



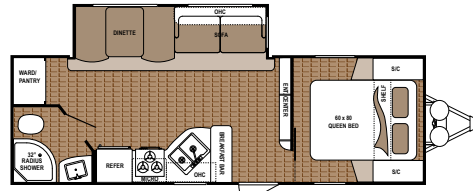
## ASPEN TRAIL | 2050QBWE\*

Ext. Length: 24' 10" Ext. Height: 10' 8"  
Average Shipping Weight: 4,307 Sleeps: 3-4



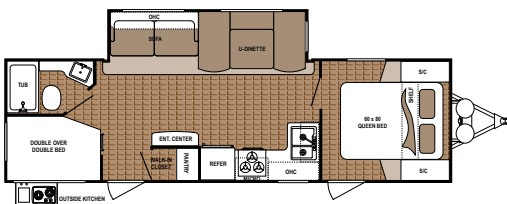
## ASPEN TRAIL | 2460RLS

Ext. Length: 28' 3" Ext. Height: 11' 4"  
Average Shipping Weight: 5,514 Sleeps: 3-5



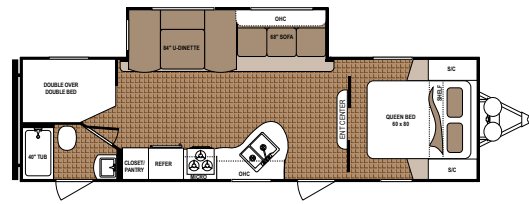
## ASPEN TRAIL | 2480RBS

Ext. Length: 28' 9" Ext. Height: 11' 3"  
Average Shipping Weight: 5,842 Sleeps: 4-5



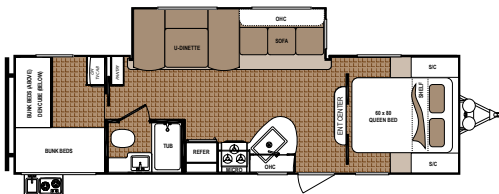
## ASPEN TRAIL | 2790BHS

Ext. Length: 31' 10" Ext. Height: 11' 3"  
Average Shipping Weight: 6,497 Sleeps: 6-8



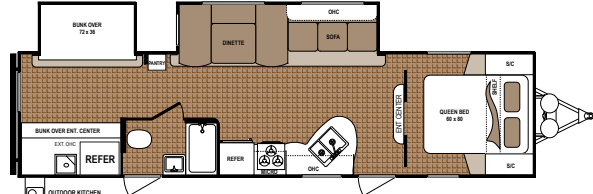
## ASPEN TRAIL | 2810BHS

Ext. Length: 32' 2" Ext. Height: 11' 4"  
Average Shipping Weight: 6,297 Sleeps: 6-8



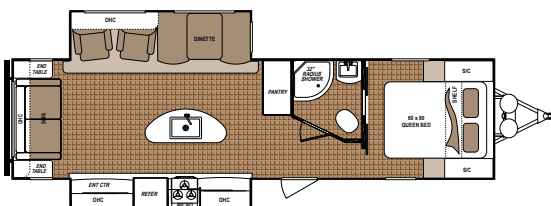
## ASPEN TRAIL | 2910BHS

Ext. Length: 33' 2" Ext. Height: 11' 2"  
Average Shipping Weight: 6,597 Sleeps: 6-8



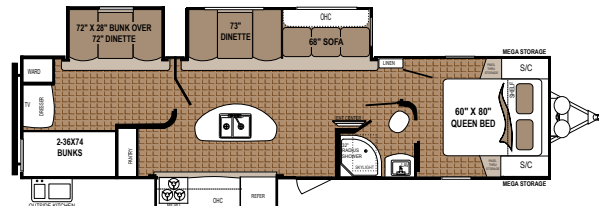
## ASPEN TRAIL | 3010BHDS

Ext. Length: 35' 9" Ext. Height: 11' 7"  
Average Shipping Weight: 7,588 Sleeps: 6-8



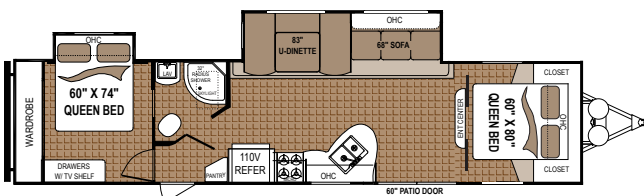
## ASPEN TRAIL | 3070RLS

Ext. Length: 34' 11" Ext. Height: 11' 2"  
Average Shipping Weight: 7,128 Sleeps: 4-6



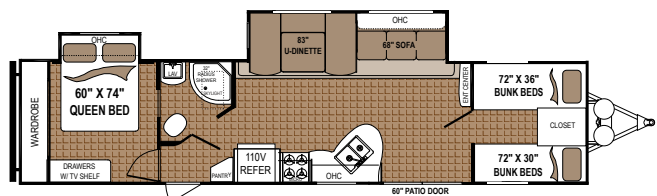
## ASPEN TRAIL | 3100BHS

Ext. Length: 37' 6" Ext. Height: 11' 8"  
Average Shipping Weight: 8,555 Sleeps: 8



## ASPEN TRAIL | 3600QBDS

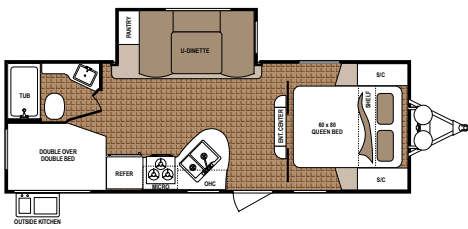
Ext. Length: 39' 9" Ext. Height: 11' 5"  
Average Shipping Weight: 8,126 Sleeps: 8-10



## ASPEN TRAIL | 3650BHDS

Ext. Length: 39' 9" Ext. Height: 11' 5"  
Average Shipping Weight: 8,126 Sleeps: 8-10

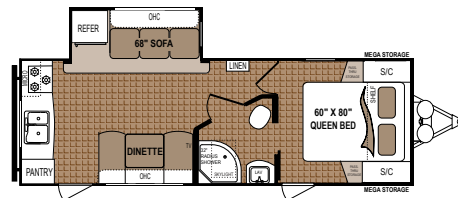
\*Models only available in the Western Region



### ASPEN TRAIL 2340BHs

Ext. Length: 27' 2" Ext. Height: 11' 4"

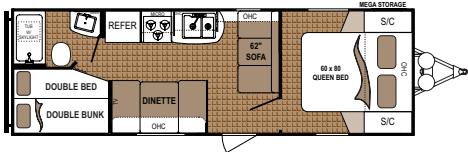
Average Shipping Weight: 5,599 Sleeps: 3-4



### ASPEN TRAIL | 2390RKS

Ext. Length: 27' 2" Ext. Height: 11' 4"

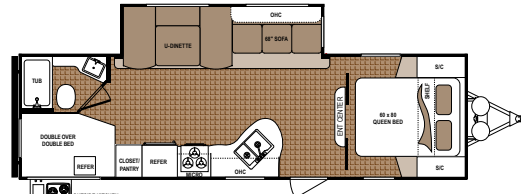
Average Shipping Weight: 5,600 Sleeps: 3-4



### ASPEN TRAIL | 2710BH

Ext. Length: 28' 7" Ext. Height: 10' 7"

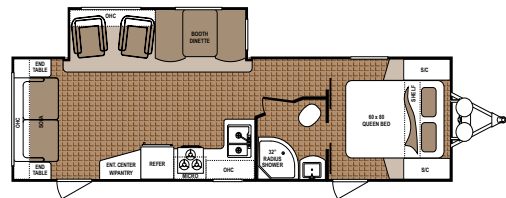
Average Shipping Weight: 4,517 Sleeps: 4-6



### ASPEN TRAIL | 2750BHs

Ext. Length: 31' 4" Ext. Height: 11' 3"

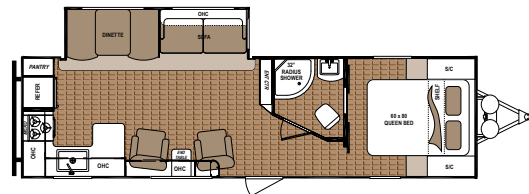
Average Shipping Weight: 6,264 Sleeps: 6-8



### ASPEN TRAIL 2860RLS

Ext. Length: 32' 6" Ext. Height: 11' 3"

Average Shipping Weight: 6,450 Sleeps: 4-5



### ASPEN TRAIL | 2880RKS

Ext. Length: 32' 11" Ext. Height: 11' 3"

Average Shipping Weight: 6,510 Sleeps: 4-6

## STANDARDS AND OPTIONS ASPEN TRAIL

### MANDATORY OPTIONS

Aspen Trail Upgrade Package

### ASPEN TRAIL UPGRADE PACKAGE

Aerodynamic Front Profile  
LED Interior Lighting  
Aspen Trail Central Command Center  
Bluetooth Stereo w/CD/DVD/Aux  
Full Extension, Roller Ball Bearing Drawer Guides  
Maple Hardwood Cabinet Doors  
Laundry Chute (Where Applicable)  
60x80 Residential Queen Everdream Mattress  
Upgraded Beaufloor Wood Plank Lino  
Seamless Thermofoil Countertops

### INTERIOR STANDARD FEATURES

3 Burner Range w/Oven  
6-cu. ft. Gas/Electric Refrigerator  
6-gal. Gas/Electric Water Heater w/DSI  
12V 55-amp Converter  
Undermount Kitchen Sink  
82" Interior Height, 6 ft. Ceiling in Slide Room  
8,000-BTU Non-Ducted Air (1700 & 1900)  
13,500-BTU Ducted Air (n/a 1700 & 1900)  
Bath Skylight

Bathtub Exhaust Fan  
Bedsread  
Black Refrigerator Insert  
Cable TV Hookup w/Booster  
Foot Flush Toilet  
High Rise Faucet  
High Output Furnace  
Microwave  
Radius Overhead Cabinets  
Range Hood w/Light and Exhaust Fan  
Shower/Tub Surround  
Water Heater Bypass

### EXTERIOR STANDARD FEATURES

Diamond Plate Rock Guard  
Digital TV Antenna  
Easy Lube Axles  
Extended Long Rain Gutters  
Front and Rear Stabilizing Jacks  
Heated and Enclosed Underbelly  
Manual Awning  
Mega Pass-Thru Storage Compartment  
Power Cord  
Radial Tires  
Seamless One Piece Roof  
Tinted Safety Glass Windows  
Triple Entry Steps (Deep Slides)  
Two 20-lb. LP Bottles w/Cover

Two Exterior Speakers  
Walk-On Roof

### OPTIONS

14" Aluminum Wheels (Smaller Models)  
15" Aluminum Wheels (Larger Models)  
29" LCD TV  
15,000-BTU A/C IPO 13.5-BTU A/C  
2nd 13.5-BTU Non-Ducted Bedroom A/C (Select Models Only)  
2nd A/C Prep w/50-amp Service (Select Models Only)  
Electric Front & Rear Stabilizer Jacks  
Front Queen Bed IPO Bunks (3600 Only)  
Power Awning w/LED Lights  
Power Tongue Jack w/Docking Light  
Spare Tire w/Cover  
Tri-Fold Hide-A-Bed IPO Flip Sofa (Select Models Only)  
Two 30-lb. LP Bottles w/Cover  
Outside Shower

### CODES & SEALS

CSA Construction and Seal  
RVIA Seal  
State Seal (where applicable)  
Winterization

## STANDARDS AND OPTIONS ASPEN TRAIL LE SERIES

### ASPEN TRAIL LE PACKAGE

60x80 Residential Queen Bed  
82" Interior Height  
6' Tall Flush Floor Slideouts (26BH & 31BH Only)  
LED Interior Lighting  
Front Diamond Plate Protection  
Tinted Safety Glass Windows  
Four Stabilizer Jacks  
Easy Lube Axles  
Double Entrance Step  
30-amp Power Cord  
120V Exterior Outlet  
35-amp Converter  
Dual 20-lb. LP Bottle  
Fire Extinguisher  
LP/Carbon Monoxide/Smoke Detectors  
Systems Monitor Panel  
13.5-BTU A/C  
6-gal. Gas Water Heater

Water Heater Bypass Kit  
High Output Furnace w/Auto Ignition  
6-cu. ft. Refrigerator  
Microwave  
3 Burner Range Top  
Galley Sink w/High Rise Faucet  
Full Extension Drawer Guides Throughout  
Shower Curtain  
Foot Pedal Flush Toilet  
Mini Blinds Throughout  
Soft Valance Tops Only  
Upgraded Residential Flooring  
AM/FM/CD/MP3 w/Two Interior & Two Exterior Speakers  
TV Antenna w/Booster  
Winterization

### OPTIONS

15k A/C in place of 13.5k  
Spare Tire



## PEACE OF MIND

At Dutchmen, quality is our standard. Every single Dutchmen RV that comes off the line receives its own 253-point pre-delivery inspection and is backed by the industry's best 3-year limited structural warranty.

DISCLAIMER: Product information is as accurate as possible as of the date of brochure publication. All features, floorplans and specifications in this brochure are subject to change without notice. Please consult Dutchmen's website at [www.Dutchmen.com](http://www.Dutchmen.com) for current product information and specifications. Tow Vehicle Disclaimer. CAUTION: Owners of Dutchmen recreational vehicles are solely responsible for the selection and proper use of tow vehicles. All customers should consult with a motor vehicle manufacturer or their dealer concerning the purchase and use of suitable tow vehicles for Dutchmen products. Dutchmen disclaims any liability or damages suffered as a result of the selection, operation, use or misuse of a tow vehicle. DUTCHMEN'S LIMITED WARRANTY DOES NOT COVER DAMAGE TO THE RECREATIONAL VEHICLE OR THE TOW VEHICLE AS A RESULT OF THE SELECTION, OPERATION, USE OR MISUSE OF THE TOW VEHICLE. REFERENCE DUTCHMEN MANUFACTURING OWNERS MANUAL FOR LIMITED WARRANTY DETAILS.



31BH

**AN INDOOR OPEN SPACE**

The LE features 82" of interior ceiling height to give you the room you need to enjoy all of the amenities packed into this lightweight travel trailer.

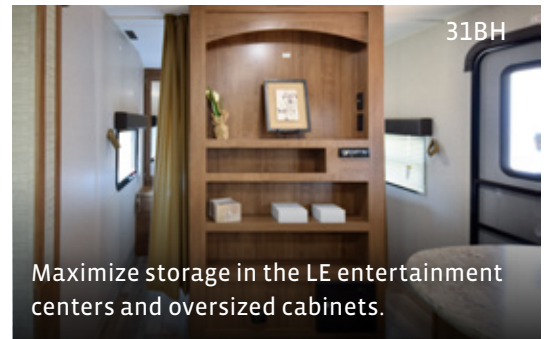
**TRAVEL LIGHT WITH THE NEW  
ASPEN  
TRAIL LE**

**The Aspen Trail LE is light on travel, but heavy on features.** Dutchmen travelers will find that they have everything they need for extended outings, including luxuries typically reserved for heavy-duty trailers, such as a 6-cu. ft. refrigerator, a 60x80 residential queen bed, LED interior lighting and upgraded residential flooring.



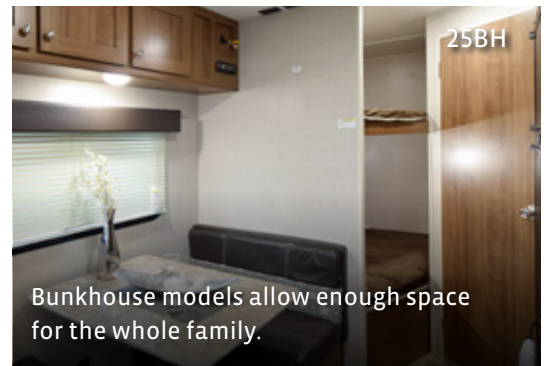
31BH

Mealtime is made easy with the kitchen's 3 burner range top, microwave and galley sink.



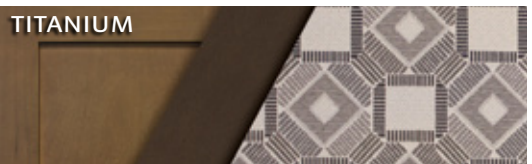
31BH

Maximize storage in the LE entertainment centers and oversized cabinets.



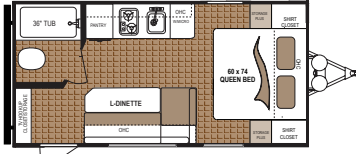
25BH

Bunkhouse models allow enough space for the whole family.

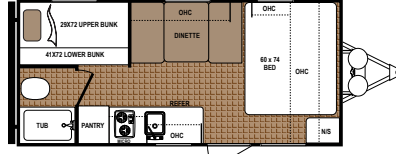


TITANIUM

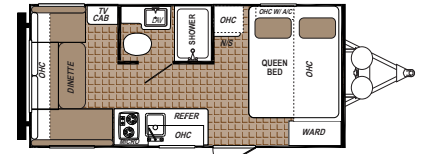
# ASPEN TRAIL LE FLOORPLANS



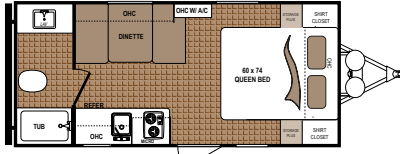
**ASPEN TRAIL LE | 1600RB**  
 Ext. Length: 21' 5" Ext. Height: 8' 11"  
 Average Shipping Weight: 3,125 Sleeps: 2-4



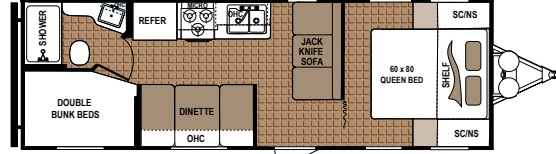
**ASPEN TRAIL LE | 1700BH**  
 Ext. Length: 21' 5" Ext. Height: 8' 8"  
 Average Shipping Weight: 3,199 Sleeps: 4-5



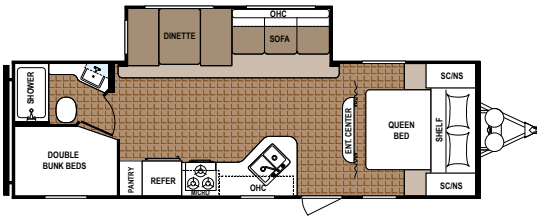
**ASPEN TRAIL LE | 1750RD**  
 Ext. Length: 21' 5" Ext. Height: 8' 10"  
 Average Shipping Weight: 3,136 Sleeps: 2-4



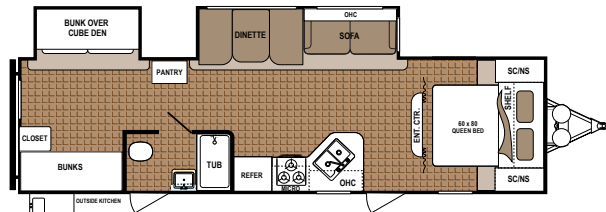
**ASPEN TRAIL LE | 1800RB**  
 Ext. Length: 21' 8" Ext. Height: 8' 10"  
 Average Shipping Weight: 3,044 Sleeps: 2-4



**ASPEN TRAIL LE | 25BH**  
 Ext. Length: 28' 8" Ext. Height: 10' 6"  
 Average Shipping Weight: 4,517 Sleeps: 6-8



**ASPEN TRAIL LE | 26BH**  
 Ext. Length: 30' 8" Ext. Height: 11' 1"  
 Average Shipping Weight: 5,636 Sleeps: 7-9



**ASPEN TRAIL LE | 31BH**  
 Ext. Length: 35' 10" Ext. Height: 11' 3"  
 Average Shipping Weight: 7,060 Sleeps: 7-8

## ASPEN TRAIL / ASPEN TRAIL LE SPECIFICATIONS

MODEL	FLOORPLAN	DIMENSIONS			WEIGHTS (LBS.)			TANKS (GALS.)		
		*EXTERIOR TRAVEL LENGTH	EXTERIOR WIDTH	EXTERIOR HEIGHT (WITH A/C)	**AVERAGE SHIPPING WEIGHT	DRY HITCH WEIGHT	CARGO CARRYING CAPACITY	***FRESH WATER CAPACITY	GREY WATER CAPACITY	BLACK WATER CAPACITY
Aspen Trail	1900RB	24' 8"	96"	10' 8"	4,107	493	3,493	52	42	42
Aspen Trail	1930RDWE	22' 11"	96"	10' 8"	4,183	453	3,390	52	42	42
Aspen Trail	2050QBWE	24' 10"	96"	10' 8"	4,307	460	3,180	52	42	42
Aspen Trail	2340BHS	27' 4"	96"	11' 4"	5,599	609	1,959	52	42	42
Aspen Trail	2390RKS	27' 2"	96"	11' 4"	5,600	776	2,086	52	42	42
Aspen Trail	2460RLS	28' 3"	96"	11' 4"	5,514	552	2,086	52	42	42
Aspen Trail	2480RBS	28' 9"	96"	11' 4"	5,842	660	3,838	52	42	42
Aspen Trail	2710BH	28' 7"	96"	10' 7"	4,745	559	2,945	52	42	42
Aspen Trail	2750BHS	31' 4"	96"	11' 4"	6,264	669	3,392	52	42	42
Aspen Trail	2790BHS	31' 11"	96"	11' 4"	6,497	650	3,183	52	84	42
Aspen Trail	2810BHS	32' 2"	96"	11' 4"	6,297	819	3,383	52	42	42
Aspen Trail	2860RLS	32' 6"	96"	11' 4"	6,450	724	3,230	52	42	42
Aspen Trail	2880RKS	32' 11"	96"	11' 3"	6,510	656	3,168	52	84	42
Aspen Trail	2910BHS	33' 2"	96"	11' 2"	6,597	777	3,364	52	42	42
Aspen Trail	3010BHDS	35' 9"	96"	11' 7"	7,588	910	2,092	52	42	42
Aspen Trail	3070RLS	34' 11"	96"	11' 2"	7,128	948	2,286	52	42	42
Aspen Trail	3100BHS	37' 6"	96"	11' 8"	8,555	1,026	2,614	52	78	42
Aspen Trail	3600QBDS	39' 9"	96"	11' 5"	8,126	1,057	3,166	52	78	42
Aspen Trail	3650BHDS	39' 9"	96"	11' 5"	8,126	1,057	3,166	52	78	42
LE SERIES	1600RB	21' 5"	96"	8' 11"	3,125	346	725	27	28	28
LE SERIES	1700BH	21' 5"	96"	8' 8"	3,199	452	651	27	28	28
LE SERIES	1750RD	21' 8"	96"	8' 10"	3,136	450	678	27	28	28
LE SERIES	1800RB	21' 11"	96"	8' 10"	3,044	450	678	27	28	28
LE SERIES	25BH	28' 8"	96"	10' 6"	4,517	465	TBD	27	42	42
LE SERIES	26BH	30' 8"	96"	11' 1"	5,636	762	TBD	27	42	42
LE SERIES	31BH	35' 10"	96"	11' 3"	7,060	1,057	TBD	52	78	42

\*Length is defined as the distance from the centerline of hitch pin/coupler to rear bumper of trailer. \*\*Our weights represent how most units are built, inclusive of many commonly-ordered options. \*\*\*Fresh water capacity includes water heater capacity.

# TRAILBLAZING VALUE



## MORE STANDARD FEATURES MORE VALUE

Dutchmen RVs turn more heads on the lot and in the campground than any other. Why? While other manufacturers offer features as options, Dutchmen tends to make those same features standard. Call it “bang for the buck,” “more for your money,” or simply “more value.” **We’ve built a reputation for bringing RV owners more standard features for less money** for more than 25 years . . . and it’s a reputation we plan to keep.

### THE INDUSTRY'S BEST WARRANTY

Every Dutchmen RV comes with our all-new 3-year limited structural warranty. Dutchmen owners can expect an entire extra two years of protection and peace of mind.



## Dutchmen®

Legendary Innovation. Trailblazing Value.

# 300

## STRONG

### NATIONWIDE DEALER NETWORK

More than 300 Dutchmen dealers across North America and our industry-leading service center in Goshen, Indiana, combine for your peace of mind before, during and after the sale. Rest assured no matter where your travels take you, **the best-resourced RV manufacturing company in the world is behind you all the way.**

PO BOX 2000 • 2164 Caragana Court  
Goshen, Indiana 46527 Sales: 574.537.0600  
[www.dutchmen.com](http://www.dutchmen.com)

At Dutchmen, quality is our standard. **Every single Dutchmen RV that comes off the line receives its own pre-delivery inspection.** You won't find this commitment to quality anywhere else.



Scan this QR Code for the latest updates to floorplans and specs of Aspen Trail models.



## [www.dutchmen.com](http://www.dutchmen.com)

Visit us online to see all of the Dutchmen brands, innovative models and spacious floorplans.

Your local dealer

From giving advice to servicing products, we consider our loyal dealers the best resource for learning about Dutchmen products.

ASP-DM0117-30k