

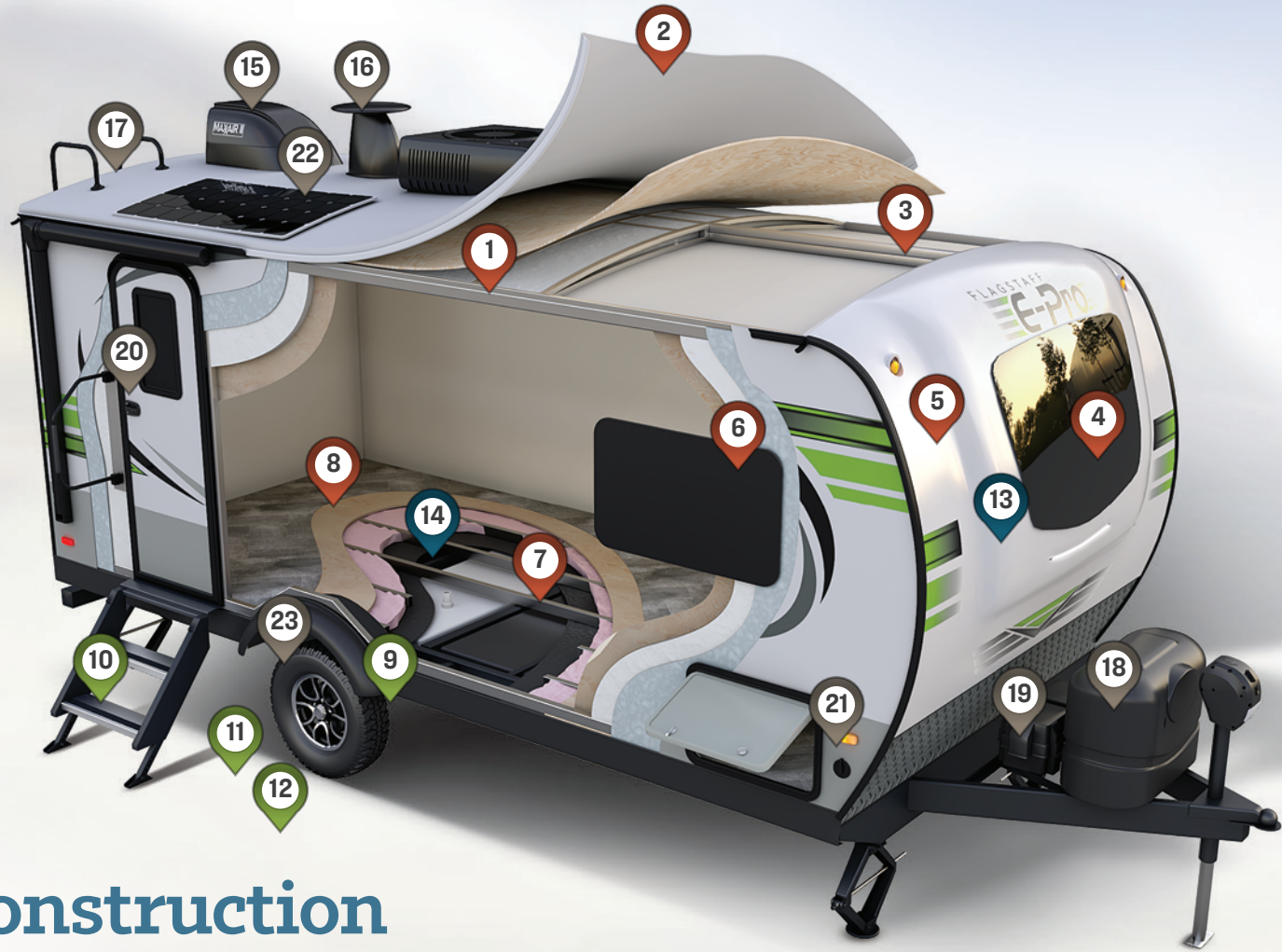
FLAGSTAFF E-PRO

# E-Pro

BY FLAGSTAFF

PROVIDING OUTDOOR FUN SINCE 1974.





# E-Pro Construction

THE FLAGSTAFF DIFFERENCE

## ▲ SUPERIOR CONSTRUCTION

- 1 6 Sided Full Aluminum Frame
- 2 Fully Laminated Walkable Roof
- 3 Aluminum Truss Roof Bracing
- 4 Automotive Glass Windshield
- 5 Fiberglass Front Cap W/ Clear Coat
- 6 Tinted Frameless Windows
- 7 Aluminum Floor Joists
- 8 5/8" Tongue & Groove Plywood Floor

## ▲ SAFETY STANDARDS

- 9 Dexter® Torsion Axles
- 10 MORryde® Solid And Supported Steps
- 11 TST Tire Pressure Monitor System
- 12 Nitrogen Filled Tires

## ▲ CLIMATE PROTECTION PACKAGE

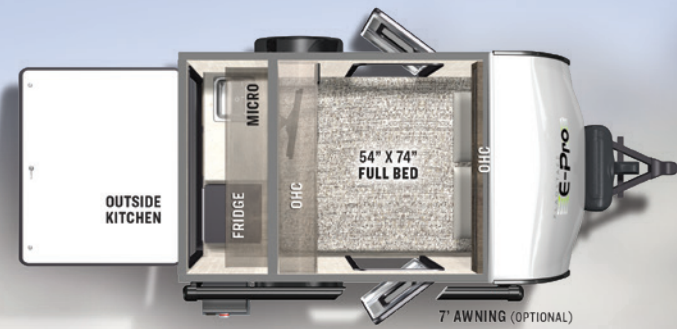
- 13 Radiant Foil In Front Caps
- 14 Optional 12v Thermostatically Controlled Heated Tanks

## ▲ STANDARD FEATURES

- 15 Maxxair® Fan W/ Cover
- 16 Teton® All In One WiFi Booster/LTE Prep/Antenna
- 17 Back Up Camera Prep
- 18 Double 20# LP Tanks
- 19 Double Battery Boxes
- 20 Key Alike Locks & Coded Key Pad Entry Lock
- 21 Solar Prep On Side
- 22 190w Roof Solar Panels W/ 1000w Inverter
- 23 Sport Tire And Wheel Package

# Modern & beautiful.

**BRIGHT AND FRESH INTERIORS THAT WILL APPEAL TO THE MASSES.** E-Pro will almost make you forget you are in the great outdoors. The E-Pro will provide you with a sense of home from our residential, Monte Carlo cabinetry, modern hardware, top of the line amenities and much more. Down to every detail, we have maximized your space with a towing weight that meets the needs of your family



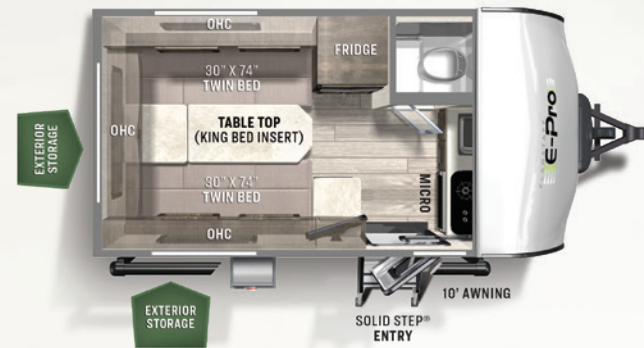
## 12RK REAR KITCHEN

<b>E-PRO</b>	UVW: 1252	HITCH: 162	AXLE: 1052	CCC: 710	LENGTH: 11' 3"
WIDTH: 6' 8"	HEIGHT: 7' 9"	INT. HEIGHT: 4' 10"	FRESH: 20 gal	GRAY: 6 gal	BLACK: NA



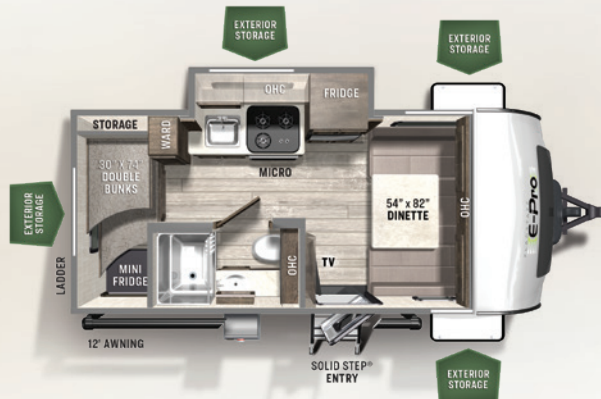
## 12SRK REAR KITCHEN

<b>E-PRO</b>	UVW: 1763	HITCH: 258	AXLE: 1467	CCC: 1135	LENGTH: 12' 3"
WIDTH: 7' 4"	HEIGHT: 7' 9"	INT. HEIGHT: 4' 10"	FRESH: 20 gal	GRAY: 6 gal	BLACK: NA



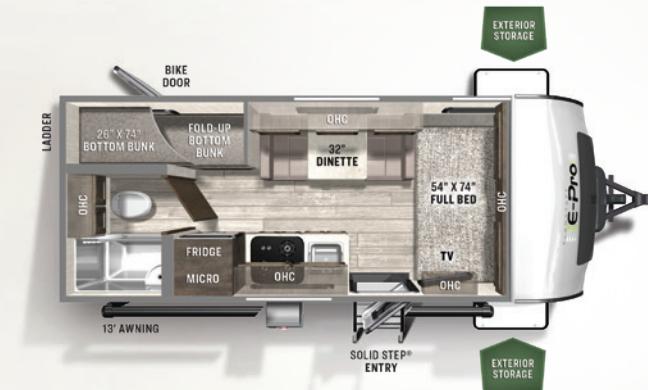
## 15TB TWIN BED

<b>E-PRO</b>	UVW: 2608	HITCH: 374	AXLE: 2196	CCC: 1266	LENGTH: 15' 10"
WIDTH: 7' 8"	HEIGHT: 9' 10"	INT. HEIGHT: 6' 6"	FRESH: 31 gal	GRAY: 12 gal	BLACK: 12 gal



## 16BH BUNKHOUSE

<b>E-PRO</b>	UVW: 3200	HITCH: 461	AXLE: 2701	CCC: 761	LENGTH: 18' 6"
WIDTH: 7' 8"	HEIGHT: 9' 10"	INT. HEIGHT: 6' 6"	FRESH: 31 gal	GRAY: 30 gal	BLACK: 30 gal



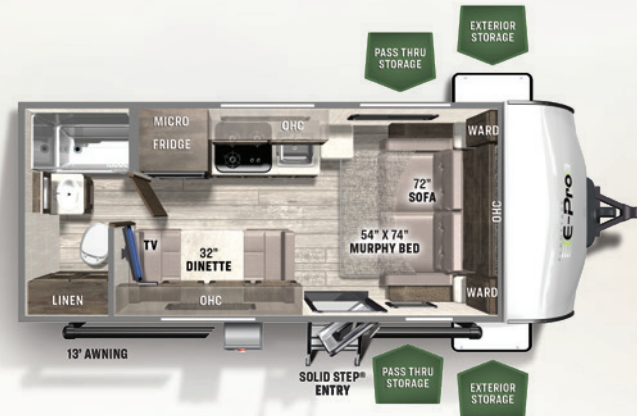
## 19BH BUNKHOUSE

<b>E-PRO</b>	UVW: 3178	HITCH: 411	AXLE: 2729	CCC: 1133	LENGTH: 20' 2"
WIDTH: 7' 8"	HEIGHT: 9' 10"	INT. HEIGHT: 6' 6"	FRESH: 31 gal	GRAY: 30 gal	BLACK: 30 gal



19FBS

19FD



19FBS

FRONT BED

19FD

MURPHY BED

E-PRO	UVW: 3290	HITCH: 474	AXLE: 2778	CCC: 1084	LENGTH: 20' 2"
WIDTH: 7' 8"	HEIGHT: 9' 10"	INT. HEIGHT: 6' 6"	FRESH: 31 gal	GRAY: 30 gal	BLACK: 30 gal

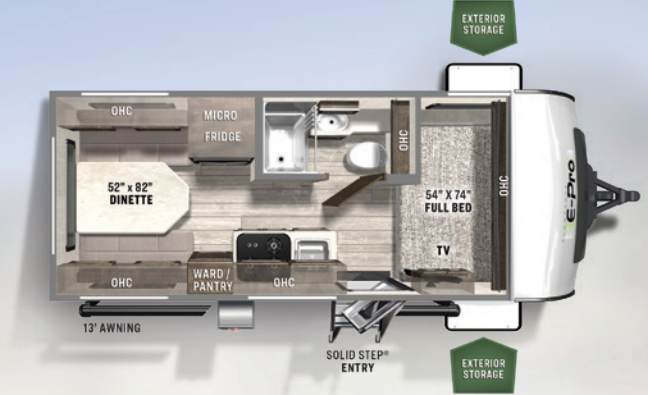
E-PRO	UVW: 3167	HITCH: 418	AXLE: 2711	CCC: 1151	LENGTH: 20' 2"
WIDTH: 7' 8"	HEIGHT: 9' 10"	INT. HEIGHT: 6' 6"	FRESH: 31 gal	GRAY: 30 gal	BLACK: 30 gal

**NEW**



**19FDS** **MURPHY BED**

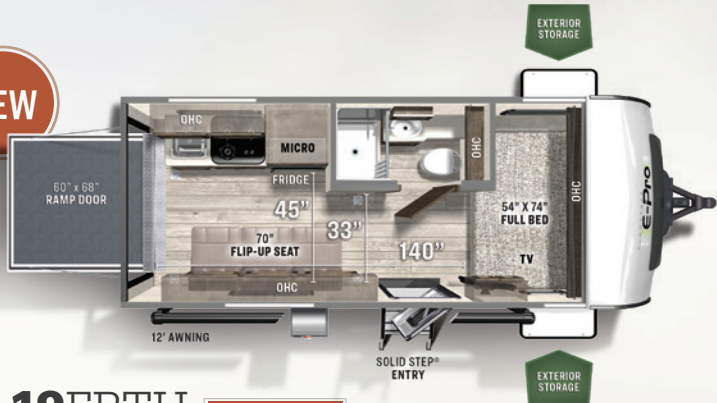
<b>E-PRO</b>	UVW: 3413	HITCH: 435	AXLE: 2940	CCC: 922	LENGTH: 20' 2"
WIDTH: 7' 8"	HEIGHT: 9' 10"	INT. HEIGHT: 6' 6"	FRESH: 31 gal	GRAY: 30 gal	BLACK: 30 gal



**19RD** **REAR DINETTE**

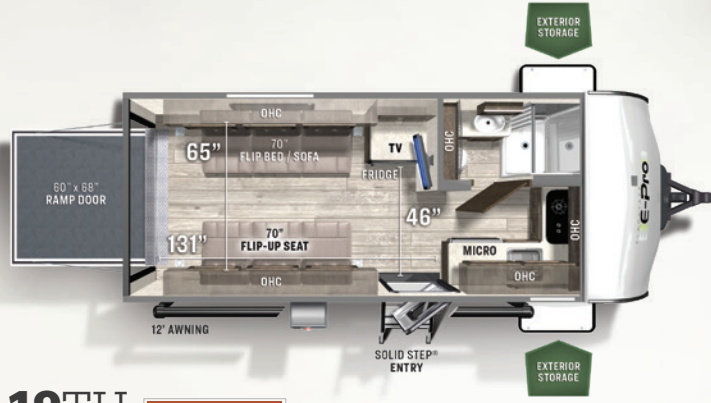
<b>E-PRO</b>	UVW: 3271	HITCH: 436	AXLE: 2797	CCC: 1065	LENGTH: 20' 2"
WIDTH: 7' 8"	HEIGHT: 9' 10"	INT. HEIGHT: 6' 6"	FRESH: 31 gal	GRAY: 30 gal	BLACK: 30 gal

**NEW**



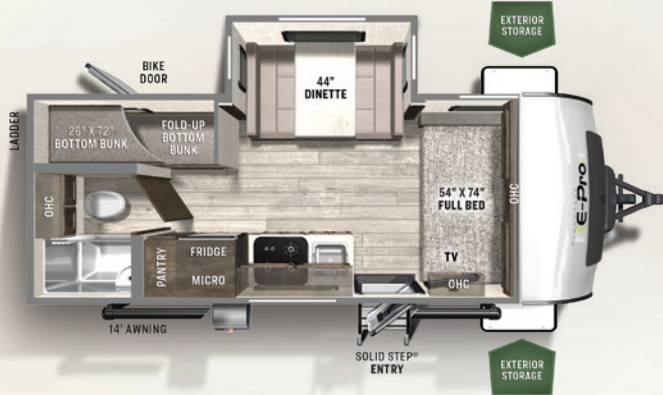
**19FBTH** **TOY HAULER**

<b>E-PRO</b>	UVW: 3873	HITCH: 620	AXLE: 3215	CCC: 1097	LENGTH: 20' 2"
WIDTH: 7' 8"	HEIGHT: 10'	INT. HEIGHT: 6' 6"	FRESH: 31 gal	GRAY: 16 gal	BLACK: 30 gal



**19TH** **TOY HAULER**

<b>E-PRO</b>	UVW: 3407	HITCH: 641	AXLE: 2728	CCC: 1584	LENGTH: 20' 2"
WIDTH: 7' 8"	HEIGHT: 10'	INT. HEIGHT: 6' 6"	FRESH: 31 gal	GRAY: 16 gal	BLACK: 30 gal



**20BHS** **BUNKHOUSE**

<b>E-PRO</b>	UVW: 3513	HITCH: 455	AXLE: 3020	CCC: 842	LENGTH: 21' 2"
WIDTH: 7' 8"	HEIGHT: 10'	INT. HEIGHT: 6' 6"	FRESH: 31 gal	GRAY: 30 gal	BLACK: 30 gal



**20FBS** **FRONT BED**

<b>E-PRO</b>	UVW: 3258	HITCH: 410	AXLE: 2810	CCC: 1052	LENGTH: 21' 2"
WIDTH: 7' 8"	HEIGHT: 10'	INT. HEIGHT: 6' 6"	FRESH: 31 gal	GRAY: 30 gal	BLACK: 30 gal

# Flagstaff E-Pro

## STANDARDS & OPTIONS

### STANDARD PACKAGE (NA 12RK)

Roller Shades
12 Volt TV w/ DVD Player
AM/FM Stereo w/ Bluetooth and USB
Quick recovery Gas/Electric Water Heater
Outside Speaker (N/A 12SRK & 12RK)
190 Watt Roof Mount Solar Panel w/ 1000 Watt Inverter
Power Awning (N/A 12SRK & 12RK)
20,000 BTU Furnace
Outside Griddle with LP Hook Up
2- 20# LP Bottles
Microwave
Polished Alloy Wheels
Tinted Frameless Windows
Spare Tire
Power Tongue Jack
13,500 Low Profile Roof A/C

### STANDARD PACKAGE B (12RK ONLY)

AM/FM Stereo w/ Bluetooth and USB
12 Volt TV w/ DVD Player
Outside Griddle with LP Hook Up
2- 20# LP Tanks
Ground Solar Prep with 1000 Watt Inverter
13,500 Low Profile Roof A/C w/ Chill Chaser Heat Strip

### OPTIONS

Manual Awning 12RK & 12SRK
Gas Oven (19BH, 19FB, 19FBS, 19FBTH, 19FD, 19RD, 20BHS)
Convection Microwave (N/A 12RK, 12SRK)
Pro Rac Mounting Bars w/ Removable Tire Step (12RK & 12SRK Only)
Pro Rac Mounting Bars w/ Removable Ladder (N/A 12RK & 12SRK)
MORryde® AirGlide Suspension (19TH, 19FBTH Only)

Pro Rac Kayak, Bike, Tie Downs, Etc. Accessories
Tongue Mount Bike Rack
Maxxair® Ventilation Fan and Vent Cover (N/A 12RK, 12SRK; Std all others)
Heated Holding Tanks
CSA (Canadian Standards)

### STANDARD FEATURES

Aluminum Cage Dinette Base (Dinette Models)
6 Sided Aluminum Cage Construction
Vacuum Laminated Roof and Walls
5/8" Tongue and Groove Plywood Flooring
4 Frame Mounted Stabilizer Jacks (2 on 12RK, 12SRK)
Fold Out Entry Steps (N/A 12RK, 12SRK)
Roof Ladder (N/A 12RK, 12SRK, 19FBTH, 19TH)
Torsion Axle, Rubber-Ryde Suspension
Nitro Filled Radial Tires with Tire Pressure Monitoring System
Prewire for Back Up Camera (N/A 12RK, 12SRK)
Magnetic Baggage Door Catches
Teton All In One Sky4 WiFi Booster/LTE Prep/Antenna
Maxxair® Ventilation Fan and Vent Cover (Opt 12RK, 12SRK; Std all others)
Recessed Cooktop W/ Flush Mount Cover (N/A 12RK, 12SRK )
12V Refrigerator
Water Heater, Gas/Electric (N/A 12RK)
Shower Miser Water Saver (N/A 12RK, 12SRK)
Black Tank Flush (N/A 12RK, 12SRK, 15TB)
360 Siphon Cap on Black Tank (N/A 12RK, 12SRK)
Water-Pur Filtration System (N/A 12RK)
Sport Tire & Wheel Package: 15" Mud Rover Radial Tires and a Lift Kit
Outside Shower (NA 12RK)
Foot Flush Toilets
Front Windshield (N/A 12 Models, 15TB, 19TH & Opt. 19FD, 19FDS)
Front Windshield (Opt Only on 19FD, 19FDS)

\* DUE TO THE CURRENT ENVIRONMENT, OUR FEATURES AND OPTIONS ARE SUBJECT TO CHANGE DUE TO MATERIAL AVAILABILITY.



**A** Standard 190W Roof Mount Solar Panel w/ 1000w inverter (NA 12RK)

**B** Shower Miser Water Conservation System (Std on all models with showers)

**C** Optional Tongue Mount Bike Rack

**D** Standard Tire Pressure Monitoring System

**E** Teton All In One Sky4 WiFi Booster/LTE Prep/Antenna

**F** Dexter Torflex Axles:

- Independent wheel suspension and self-damping action
- Rubber cushioning eliminates metal-to-metal contact.
- Forged torsion arm for maximum strength

Models are also equipped with E-Z Lube® System and Nev-R-Adjust® Brakes.

# Flagstaff Warranty.

We're proud of what we build.

**FOR DETAILS ON FLAGSTAFF'S COMPLETE WARRANTY PROGRAM, SEE YOUR FLAGSTAFF DEALER.** When it comes to backing products with the same quality and commitment it does when it begins the manufacturing process, the only name you have to remember when you're looking for a recreational vehicle is Flagstaff. Flagstaff offers the following additional limited warranties to the original purchasers. Consult written warranty for details.

1. Twelve-year vinyl roof warranty.
2. Two-year fiberglass warranty.
3. Ten-year Torflex® axle warranty.
4. One-year bumper to bumper warranty.

## CUSTOMER SATISFACTION



[www.ForestRiverBuyLocal.com](http://www.ForestRiverBuyLocal.com)



### 24/7 EMERGENCY ROADSIDE ASSISTANCE WITH VEHICLE PURCHASE\*

- |                |                 |
|----------------|-----------------|
| TOWING         | WINCH-OUT       |
| JUMP-STARTS    | MOBILE MECHANIC |
| TIRE CHANGES   | TECHNICAL       |
| FLUID DELIVERY | SUPPORT         |
| LOCKOUT        | DEALER LOCATOR  |
| SERVICE        | SERVICES        |



\*VALID FOR 1 YEAR FROM DATE OF PURCHASE



### PRE-DELIVERY INSPECTION FACILITY

20,000 square feet of quality assurance. The bare essentials for a premium product. This state-of-the-art facility gives immediate daily feedback to production for quality assurance in every unit built.

**Specification Definitions :: GVWR (Gross Vehicle Weight Rating)** - is the maximum permissible weight of the unit when fully loaded. It includes all weights, inclusive of all fluids, cargo, optional equipment and accessories. For safety and product performance do NOT exceed the GVWR. // **GAWR (Gross Axle Weight Rating)** - is the maximum permissible weight, including cargo, fluids, optional equipment and accessories that can be safely supported by a combination of all axles. // **UVW (Unloaded Vehicle Weight)**\* - is the typical weight of the unit as manufactured at the factory. It includes all weight at the unit's axle(s) and tongue or pin and LP Gas. The UVW does not include cargo, fresh potable water, additional optional equipment or dealer installed accessories. \*Estimated average based on standard build optional equipment. // **CCC (Cargo Carrying Capacity)\*\*** - is the amount of weight available for fresh potable water, cargo, additional optional equipment and accessories. CCC is equal to GVWR minus UVW. Available CCC should accommodate fresh potable water (8.3 lbs per gallon). Before filling the fresh water tank, empty the black and gray tanks to provide for more cargo capacity. \*\* Estimated average based on standard build optional equipment // Each Forest River RV is weighed at the manufacturing facility prior to shipping. A label identifying the unloaded vehicle weight of the actual unit and the cargo carrying capacity is applied to every Forest River RV prior to leaving our facilities. The load capacity of your unit is designated by weight, not by volume, so you cannot necessarily use all available space when loading your unit. // All information contained in this brochure is believed to be accurate at the time of publication. However, during the model year, it may be necessary to make revisions and Forest River, Inc., reserves the right to make all such changes without notice, including prices, colors, materials, equipment and specifications as well as the addition of new models and the discontinuance of models shown in this brochure. Therefore, please consult with your Forest River dealer and confirm the existence of any materials, design or specifications that are material to your purchase decision. Litho. U.S.A. W: FOR 1761 W: 2021.02.01

Look for our other popular lines of Flagstaff trailers.

YOUR **FLAGSTAFF** DEALER



FLAGSTAFF FIFTH WHEELS



FLAGSTAFF TRAVEL TRAILERS



FLAGSTAFF CAMPING TRAILERS



**Learn More**  
Scan this barcode using a QR Reader on your smart phone to learn more about Forest River.



A Berkshire Hathaway company.

