

HAMPTON



CROSSROADS[™]
Recreational Vehicles

370FDL Back to Front



370FDL Front to Back



364MBL Bedroom



375DBL Bathroom



388FKL Interior

STANDARDS & OPTIONS

STANDARDS

LIVING ROOM

- Exterior Cable w/ Satellite Hookup & Booster
- 8' from Floor to Ceiling Height
- 7' 0" Headroom in Slide-Outs
- Two Toned Wood Fascia
- Decorative Accent Lighting
- Powered Theatre Seating
- AM/FM/Bluetooth Soundbar
- Three Decor Choices
- TV Antenna w/ Cable Output
- HD LED TV
- Living Room Tri-Fold Hide-A-Bed Sofa (VBM)
- Patio Door w/ Swing-Out Assist Rail
- Interior LED Lighting
- Roller Blinds
- 15,000 BTU A/C

KITCHEN

- Residential Refrigerator
- Stainless Steel Microwave
- Solid Surface Countertops
- Raised Panel Cabinet Door
- Deep Stainless Steel Sink
- Faucet w/ Pull-Out Sprayer
- Residential Overhead Cabinets w/ Lighting
- Freestanding Table and Chairs (VBM)
- Full Extension Ball Bearing Drawer Guides
- Insignia Residential 4 Burner Range

BEDROOM

- TV Hook-up
- Deluxe Closet
- Coordinated Window Treatments & Bedspread
- King Sized Residential Mattress (VBM)
- Living Room and Bedroom Ceiling Fan (VBM)
- 15,000 BTU A/C for Bedroom

EXTERIOR

- Tinted Glass Windows
- Patio Awning
- Exterior Speakers
- Outside Faucet

- One Piece Fiberglass Front Cap
- Wi-Fi Prep

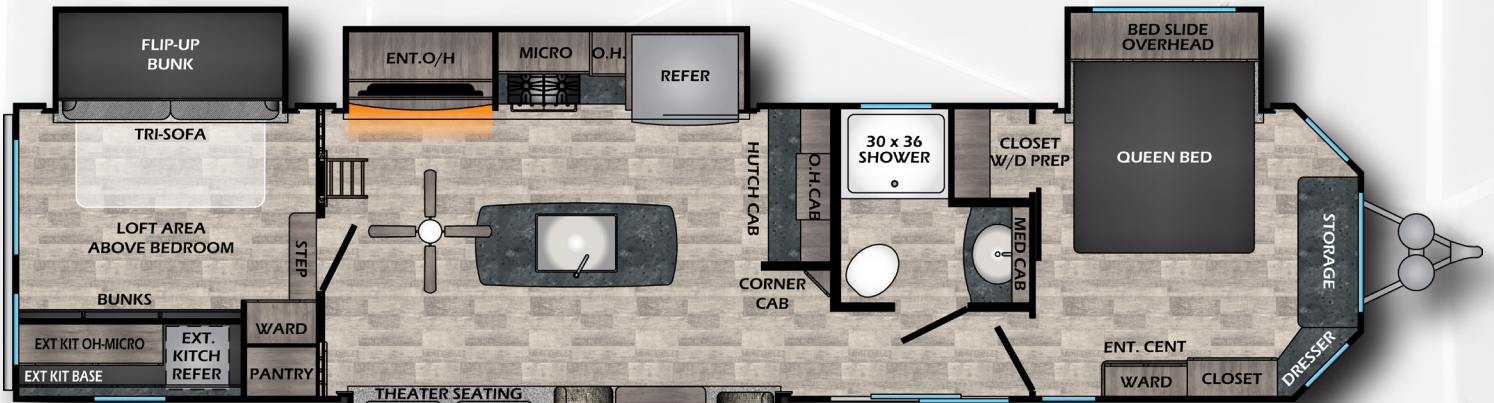
CONSTRUCTION

- 50 Amp Service
- One Piece Radius Roof
- 3/8" Roof Decking
- 16" OC Truss Rafters with 4-1/2" Crown
- Fiberglass Roof & Floor Insulation w/ Radiant Tech Foil
- Rain Gutters Along Entire Roof Line
- 35,000 BTU Floor Ducted Furnace
- 5/8" Floor Decking
- 16" Tires
- 60" x 76" Patio Door
- 99" Overall Unit Width
- Electric Slides Throughout
- Dual LP Tank Hook-up (Front and Back)
- 12 Gal DSI Gas/Electric Water Heater
- Black Tank Flush
- Enclosed Underbelly
- Swing-Out Entry Assist Handle at Second Door
- Severe Weather Welded Mounts

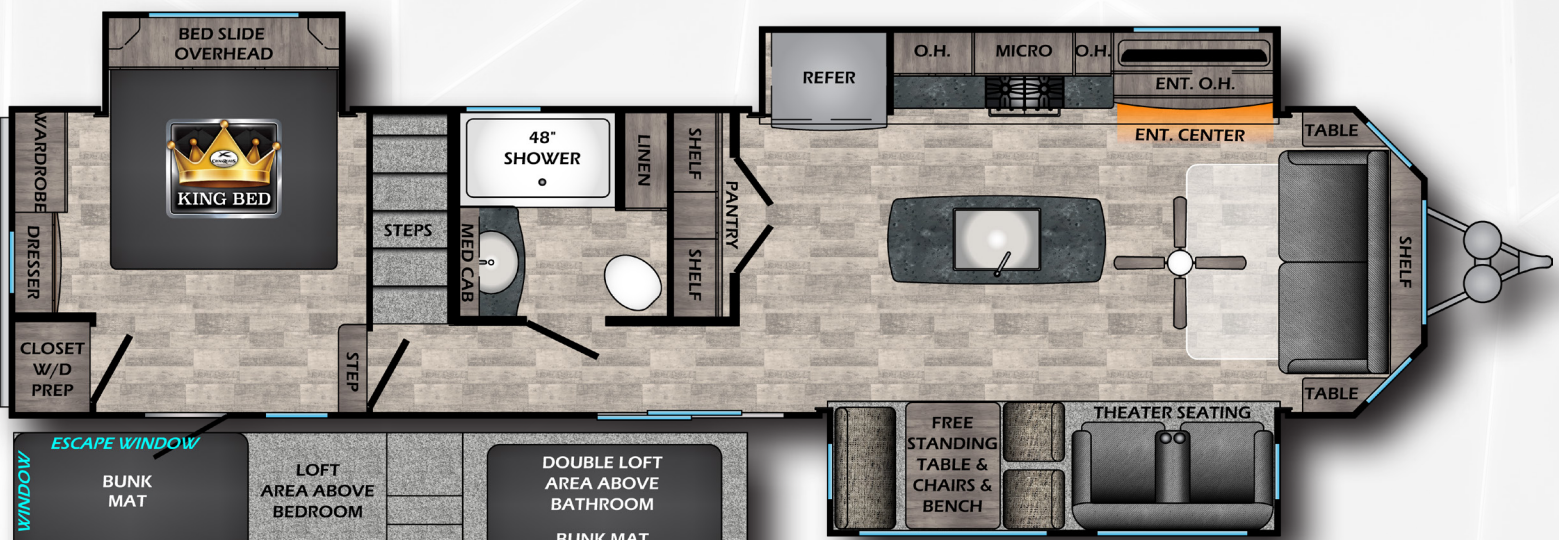
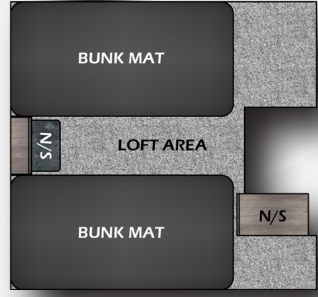
CONVENIENCE PACKAGE (STANDARD)

- Smoke Detector
- LP Detector
- 15,000 BTU A/C (x2)
- Awning
- Microwave
- Power Vent in Bathroom
- TV Antenna
- Custom Tub Surround
- Water Heater Bypass
- Quilted Bedspread
- KeyTV

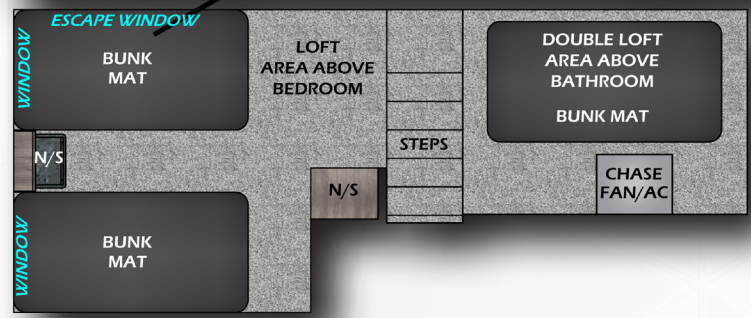
*VBM: Varies By Model

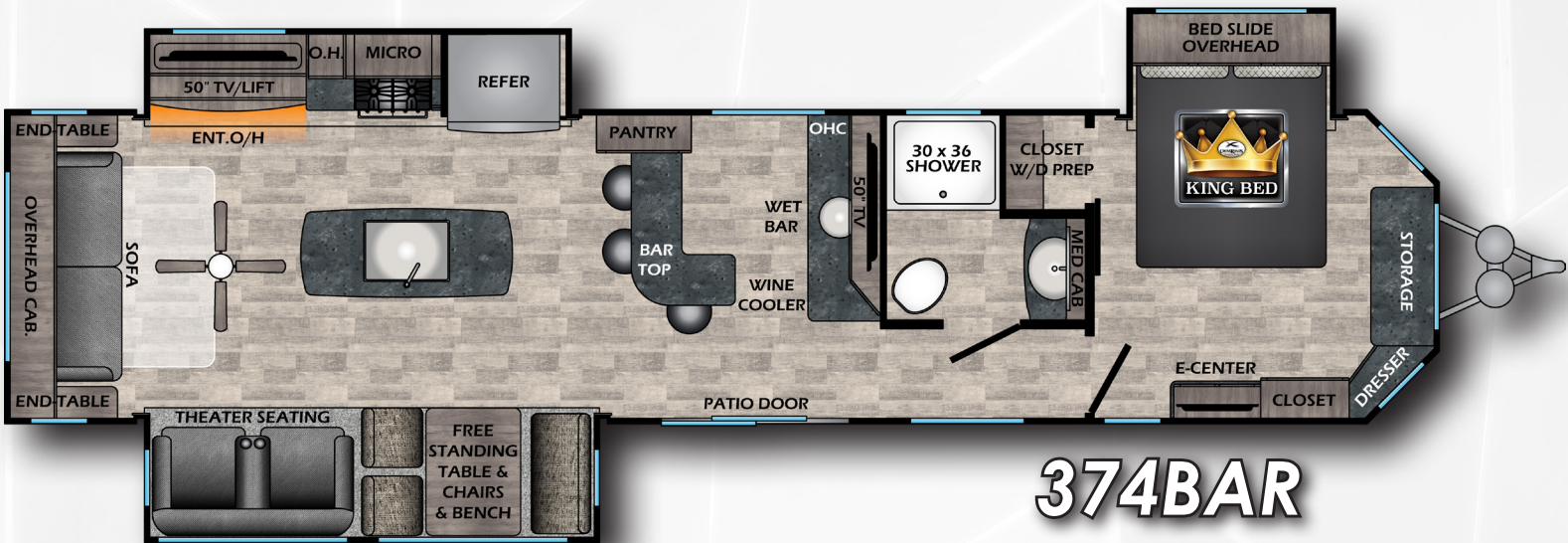
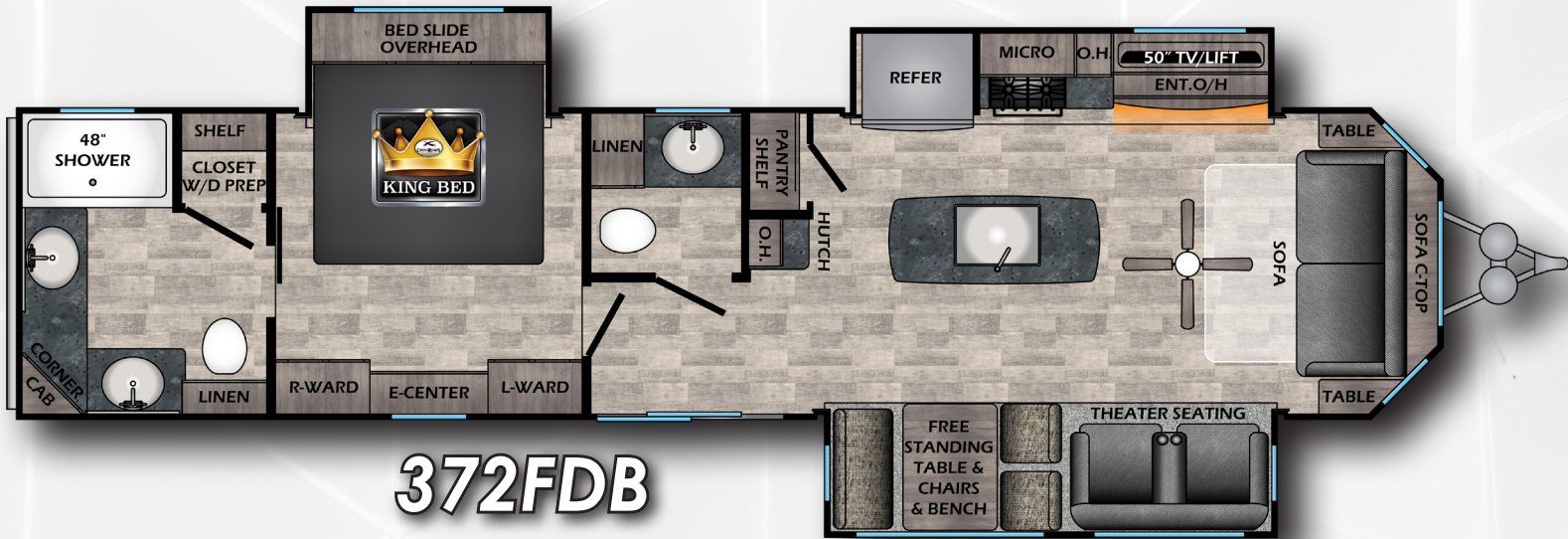


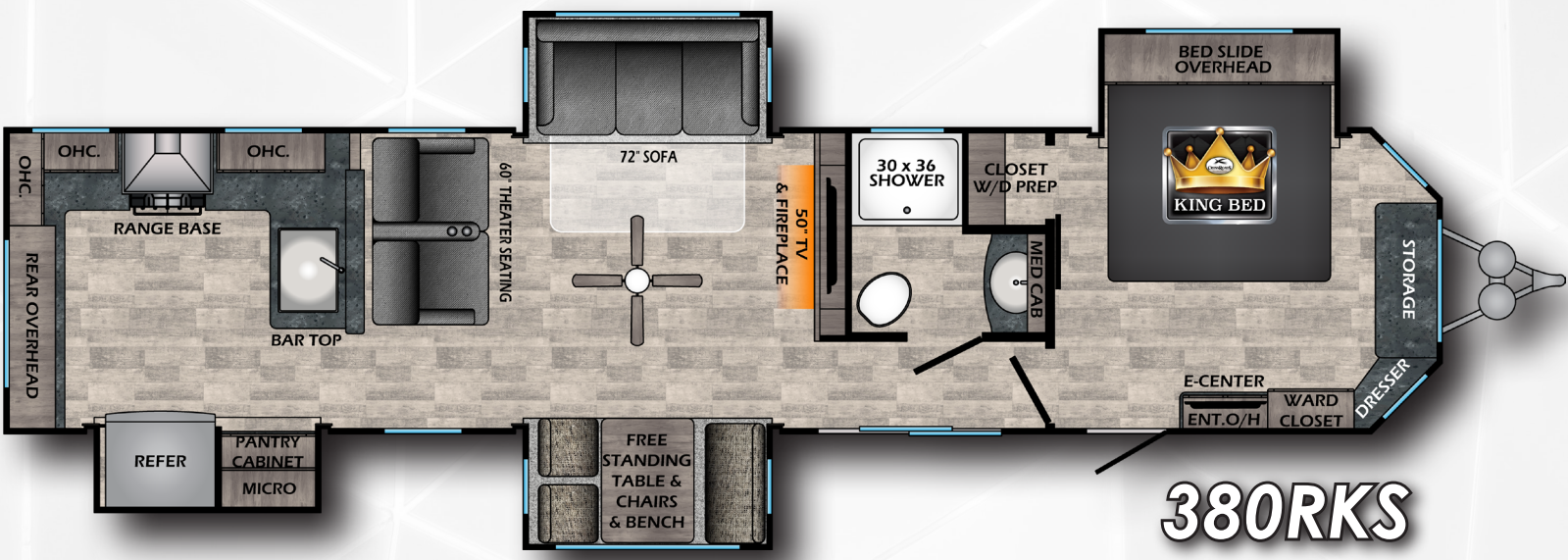
364MBL



370FDL







DECOR



www.crossroadsrv.com • 1140 W. Lake St Topeka, IN 46571 • (260) 593 - 3850

DISCLAIMER: Product information is as accurate as possible as of the date of publication of this brochure. All features, floor plans, and specifications in this brochure are subject to change without notice. Please also consult CrossRoads' web site at www.crossroadsrv.com for more current product information and specifications. Tow Vehicle Disclaimer. CAUTION: Owners of CrossRoads recreational vehicles are solely responsible for the selection and proper use of tow vehicles. All customers should consult with a motor vehicle manufacturer or their dealer concerning the purchase and use of suitable tow vehicles for CrossRoads products. CrossRoads disclaims any liability or damages suffered as a result of the selection, operation, use or misuse of a tow vehicle. CROSSROADS' LIMITED WARRANTY DOES NOT COVER DAMAGE TO THE RECREATIONAL VEHICLE OR THE TOW VEHICLE AS A RESULT OF THE SELECTION, OPERATION, USE OR MISUSE OF THE TOW VEHICLE. REFERENCE CROSSROADS RV COMPANY OWNERS MANUAL FOR LIMITED WARRANTY DETAILS. *Length is defined as the distance from the centerline of hitch pin/coupler to rear bumper of trailer.