

PROWLER and PROWLER REGAL-Travel Trailers and Fifth Wheels-2006



Prowler

Time to ride.



PROWLER and PROWLER REGAL-Travel Trailers and Fifth Wheels-2006



Prowler



Prowler 320DBHS shown in Beige Bounty interior decor with Windsor Birch wood finish.

AN INTEGRATED MAGAZINE RACK (top left) is the perfect place to keep your favorite publications on your travels.

THE DROP DOWN SOFA KICK PANEL (middle left) conveniently provides additional storage space under the sofa.

While competitors often build their own furniture, Fleetwood focuses on building and designing a superior RV with trusted name brands like comfortable Flexsteel® furniture with a lifetime warranty on the frame. Other notable name brands include Dometic®, Magic Chef® and Hydroflame.

UNDER-THE-DINETTE STORAGE (lower left) is accessible under the seat cushion or through the side door for your storage needs.

OVERHEAD STORAGE (top right) is a great place to keep books, board games, CDs or anything else for your travels.

AN ENTERTAINMENT CENTER (middle right) features a large TV shelf with overhead/underneath storage (TV & VCR not included).

THE AM/FM RADIO W/CD PLAYER (lower right) allows you to play your favorite music, listen to the game or talk radio programs.



On the Prowl.

Other competitors are simply no match for Prowler with its superb construction and dynamic looking design. There is no beating Prowler's style with the absolute best looking interior decor motifs at its price point. If that wasn't enough, Prowler also boasts awesome looking exterior graphics with features like radius entry

and luggage doors, giving it a very clean look. Strong, smooth and laminated hard wall construction also looks fantastic, while providing improved insulation and increased rigidity over the competition's design. The sidewalls are also very easy to clean, so you can always keep your Prowler looking its best on the road.



A SPACIOUS DOMETIC® 6 CU. FT. REFRIGERATOR is great to have on the road. Perfect for storing food and beverages.



A BUILT-IN SPICE RACK makes the galley even more accommodating for your cooking needs.



UNDER-THE-SINK STORAGE is a convenient place to keep cleaning supplies, just like home.



THE GALLEY SOAP DISPENSER is a convenient feature giving you instant soap for washing your hands or cleaning dishes.



A SINGLE LEVER FAUCET WITH SPRAYER is great for quick cleanup, just like home (water purifier is optional).



THE GALLEY boasts great features like a built in spice rack, a 3-burner stove with 22" range oven and plenty of overhead storage, perfect for full-size plates, dishes and cookware.



THE MICROWAVE is perfect for a quick snack or meal on the go.



A DRAWER FOR POTS & PANS is specifically designed for large cookware, while featuring full extension hardware, giving you full access to the drawer.



THE PANTRY features convenient adjustable shelves so you can store a variety of non-perishable goods.



Room to Relax.

You'll always have plenty of room to rest in peace and quiet after a long day of adventure. Sleep well in the comfortable innerspring mattress and recharge for the days that lie ahead. Prowler is designed with comfort and function in mind, making your travels convenient and easy. Choose from several different floor plan

configurations, giving you the option of single or double bunk beds to best suit your needs. You'll also enjoy under-the-bed storage for extra linens and towels. In the bathroom, enjoy a power vent for air circulation, residential towel racks and a medicine cabinet with mirrored door just like home.



SHOWER WITH WATERSAVER has integrated ABS shower walls, easily useable as a tub. Watersaver is a nice feature on the showerhead that allows you to conserve water while dry camping.



THE WARDROBE includes a slotted clothes rack that can accommodate full-size hangers for your clothing needs.



THE BEDROOM boasts a stylish interior decor, raised panel overhead cabinets, his/her wardrobes for additional storage and mini-blinds to keep out, or let in the light.



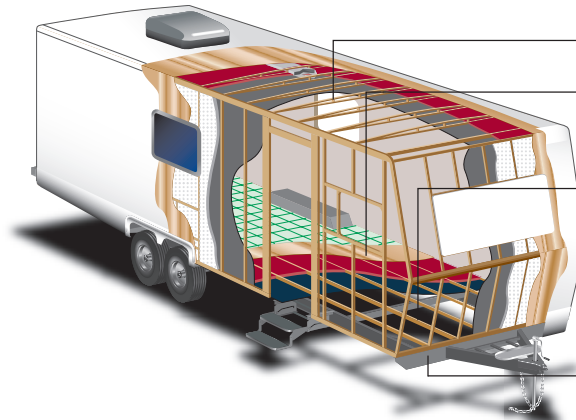
BUNK BEDS make great use of Prowler's space to accommodate your sleeping needs (available on select models).



THE BATHROOM features a residential sized sink and a mirrored medicine cabinet with plenty of room for toiletries.

Setting the Standard in Travel Trailer and 5th Wheel Quality.

Fleetwood® prototypes are exposed to thousands of miles of durability testing. Those components that don't survive are redesigned until they do. This sets the standard in safety and durability.



ENGINEERED RADIUSED CEILING TRUSS
ensures strength, water runoff and reduced weight.

5/8" FLOOR DECKING
provides the dependable decking needed to ensure an adequate foundation. Further stability is added by interlocking these sheets using "tongue in groove" construction.

2X3 FLOOR JOIST
allows for the placement of in-floor furnace ducting without compromising structural integrity.

SMOOTH GLOSS FIBERGLASS EXTERIOR SIDING
adds more structural integrity than aluminum siding, which provides a glossy surface that is easy-to-clean and adds long lasting beauty.

REINFORCED CAMBERED STEEL CHASSIS
provides optimal strength, durability and performance.



PASS THROUGH STORAGE

(most models) is perfect for storing oversized items like snowboards, or fishing poles.

THE EXTERIOR SHOWER

(optional) is a very convenient feature for a quick rinse off after a day of playing.

CUBE SPEAKERS AND SUB-WOOFER

will make your favorite music sound even better.

GARAGE STORAGE

(optional) is great for storing all kinds of gear, and is lined with a special easy to clean material.

A WATER FILTER

(optional) is a very functional feature, providing you with fresh filtered water for drinking.

TINTED SAFETY GLASS WINDOWS

help keep the sun out and also aid in reducing the likelihood that fabrics will fade.

A LOW PRESSURE PROPANE CONNECTOR allows you to hook up a BBQ for great cooking while camping.

LARGE LEND-A-HAND ENTRY ASSIST HANDLE

(optional) makes it easy to enter or exit.



A Step Up.

The Prowler Regal turns it up a notch with its elite look and features. This stylish RV boasts breathtaking graphics and design, sure to turn heads while you're out on the road. You'll love the fiberglass front cap combined with a deluxe graphic package (not available on Prowler) that's nothing short of spectacular. Prowler Regal also features strong aluminum

framing, creating a lightweight but strong vehicle skeleton, ideal for towing. You'll also love the standard enclosed and heated water tank, which will minimize the chance of freezing even in colder temperatures. Optional enclosed, heated grey and black water tanks are also available to make your camping experience that much more convenient.



THE BATHROOM

features an elegant single handle faucet that's easy to operate and a standard 3-bulb vanity light, providing additional lighting.



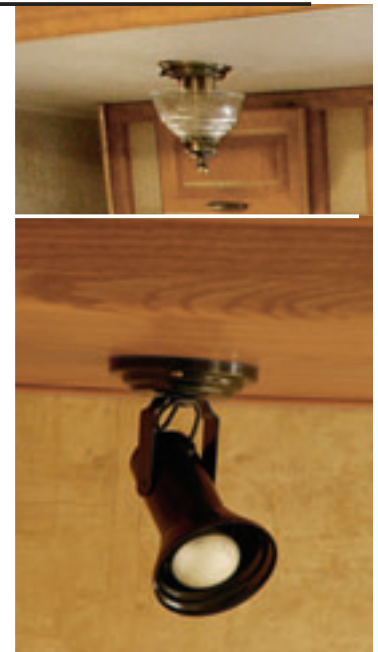
THE FIBERGLASS FRONT CAP

is aerodynamic, sleek and appealing to the eye, for an upscale look and feel.



ALUMINUM FRAME CONSTRUCTION

Prowler Regal's welded aluminum frame construction coupled with Fleetwood's lamination process provides superior sidewalls which are not just strong and corrosion resistant, but also lightweight.



DECORATIVE LIGHTING

in the living room adds to the upscale atmosphere, making your travels that much more enjoyable.

SWIVEL READING LIGHTS

in the bedroom make it easy and convenient to curl up to a good book.

FOUR INTERIORS. THE CHOICE IS YOURS.

For '06, choose from diverse interior fabric motifs. With each interior, you can choose from two beautiful wood finishes.

PROWLER EXTERIORS



PROWLER



PROWLER REGAL

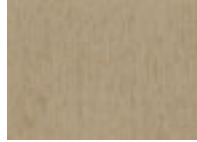
PROWLER INTERIOR COLOR CHOICES

NANTUCKET

Living/Dining Room



Sofa Bed & Dinette Cushions



Swivel Chair & Throw Pillows

Bedroom



Headboard



Bedspread & Window Treatments

GARDEN GATE

Living/Dining Room



Sofa Bed & Dinette Cushions

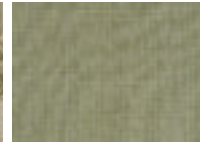


Swivel Chair & Throw Pillows

Bedroom



Headboard & Bedspread



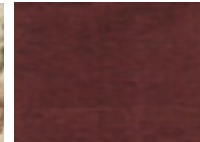
Window Treatments

RHAPSODY

Living/Dining Room



Sofa Bed & Dinette Cushions

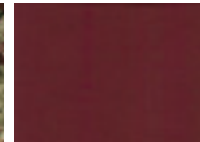


Swivel Chair & Throw Pillows

Bedroom



Headboard & Bedspread



Window Treatments

BIEGE BOUNTY

Living/Dining Room



Sofa Bed



Swivel Chair, Throw Pillows & Dinette Cushions

Bedroom



Headboard



Bedspread & Window Treatments

INTERIOR WOOD FINISHES



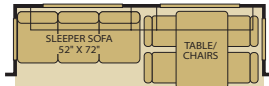
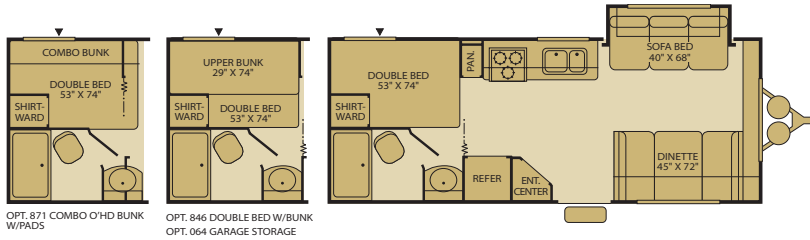
Summer Oak



Windsor Birch

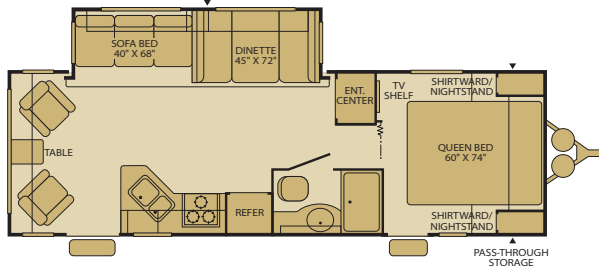
Travel Trailer Floor Plans

220RBS ◆
Single Slide-Out
Sleeps 6



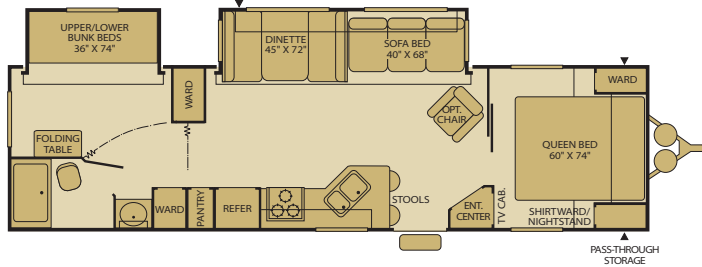
OPT. 832
FREE-STANDING DINETTE AND CHAIRS
OPT. 810
SLEEPER SOFA W/FREE-STANDING DINETTE AND CHAIRS

260RLS ◆
Single Slide-Out
Sleeps 6

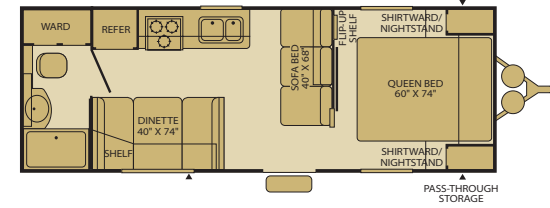


OPT. 832
FREE-STANDING DINETTE AND CHAIRS
OPT. 810
SLEEPER SOFA W/FREE-STANDING DINETTE AND CHAIRS

3102BDS ◆
Double Slide-Out
Sleeps 8

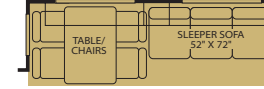
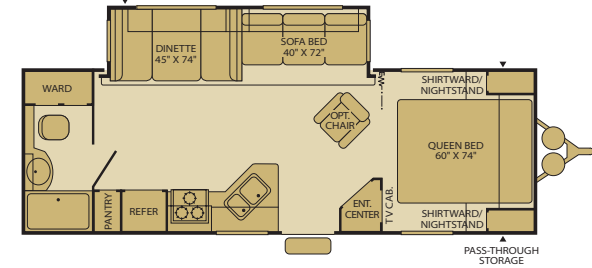


250FQ ◆
Sleeps 6



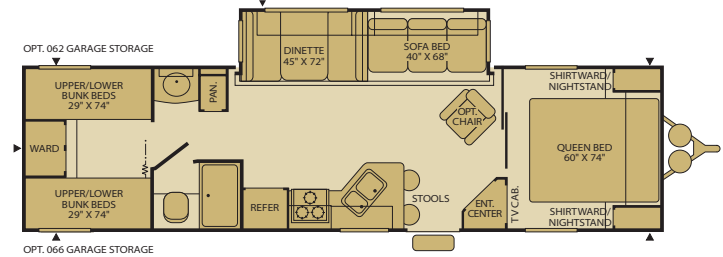
OPT. 832
FREE-STANDING DINETTE AND CHAIRS
OPT. 810
SLEEPER SOFA W/FREE-STANDING DINETTE AND CHAIRS

270FQS ◆ ●
Single Slide-Out
Sleeps 6



OPT. 832
FREE-STANDING DINETTE AND CHAIRS
OPT. 810
SLEEPER SOFA W/FREE-STANDING DINETTE AND CHAIRS

320DBHS ◆ ●
Single Slide-Out
Sleeps 10

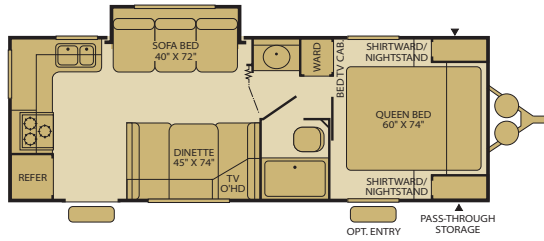


Prowler = ◆ Prowler Regal = ●

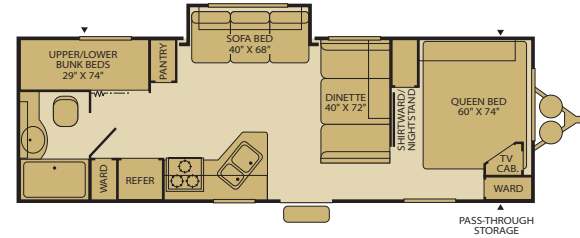
Exterior Storage = ▲

Some models are not available in all areas of the country.
Please see your local dealer for model availability.

250RKS ♦
Single Slide-Out
Sleeps 6



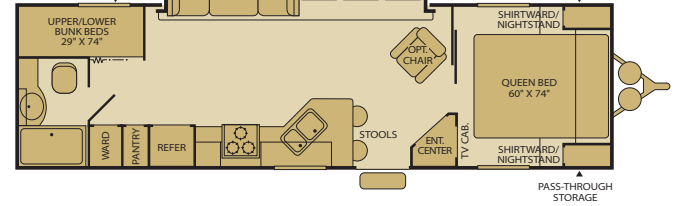
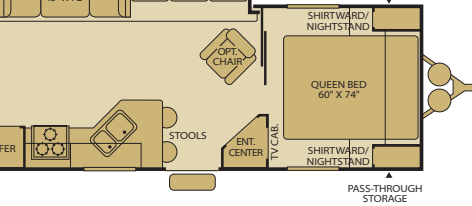
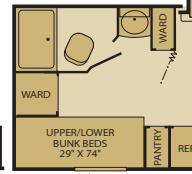
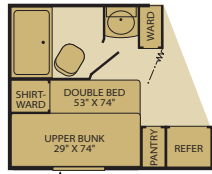
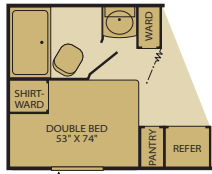
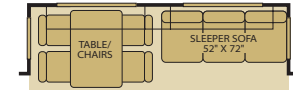
260BHS ♦
Single Slide-Out
Sleeps 8



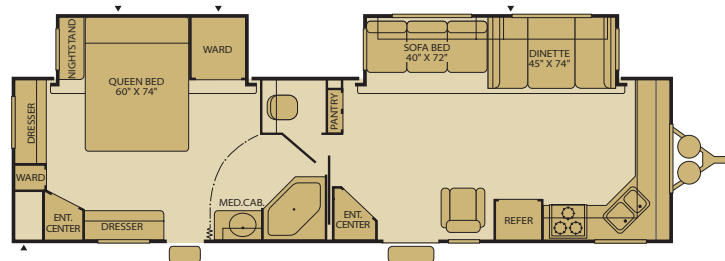
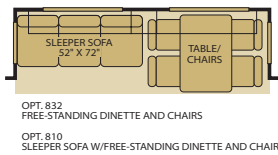
300BHS ♦
Single Slide-Out
Sleeps 8



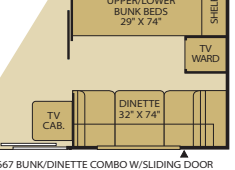
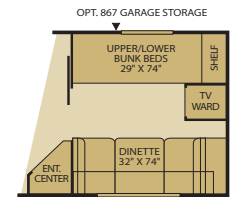
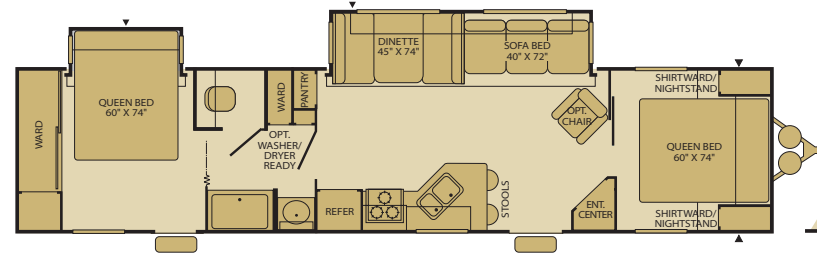
300FQS ♦ ●
Single Slide-Out
Sleeps 8



330FKDS ♦ ●
Double Slide-Out
Sleeps 6



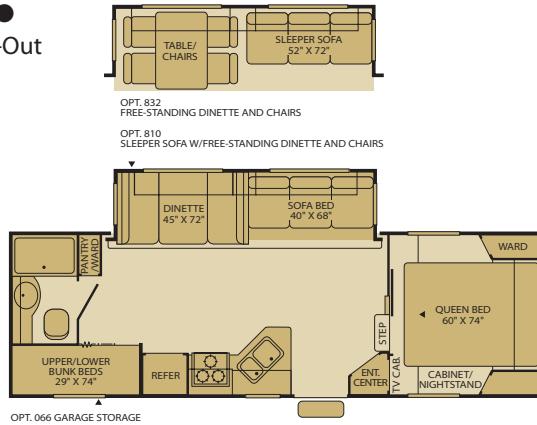
3902BDS ♦
Double Slide-Out
Sleeps 8



Sleeping capacity based on standard layout. Optional furniture may increase or decrease sleeping capacity.

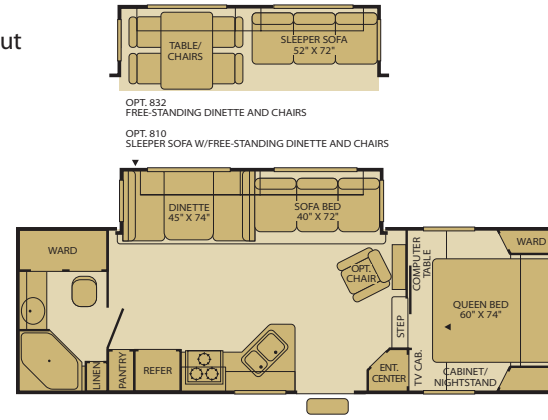
Fifth Wheel Floor Plans

255BHS ◆ ●
Single Slide-Out
Sleeps 8



Mid Profile Fifth Wheel

275CKS ◆
Single Slide-Out
Sleeps 6



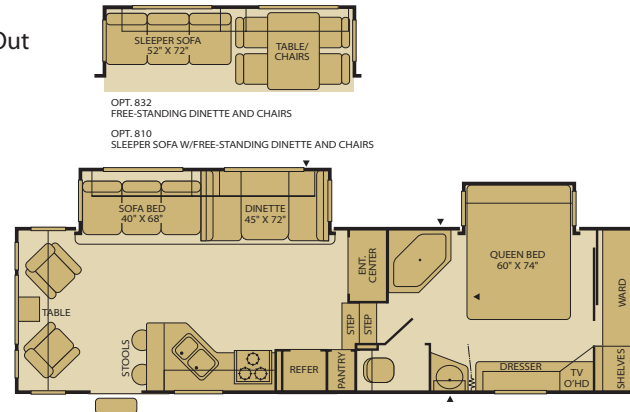
Mid Profile Fifth Wheel

295RLS ◆ ●
Single Slide-Out
Sleeps 6



Mid Profile Fifth Wheel

305RLDS ●
Double Slide-Out
Sleeps 6



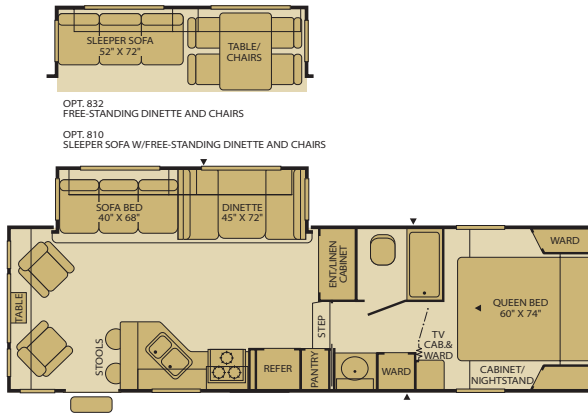
High Profile Fifth Wheel

Prowler = ◆ Prowler Regal = ●

Exterior Storage = ▲

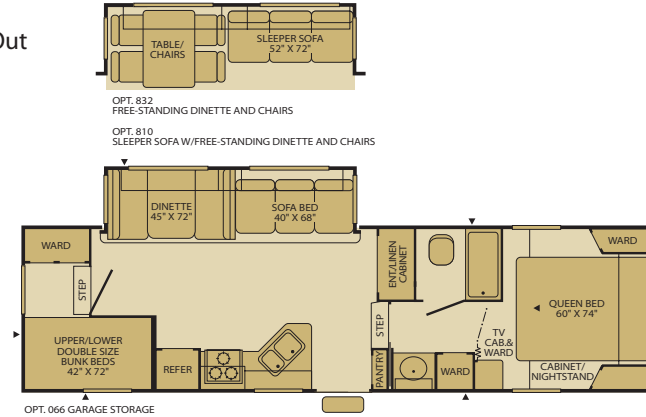
*Some models are not available in all areas of the country.
Please see your local dealer for model availability.*

285RLS ◆ ●
Single Slide-Out
Sleeps 6



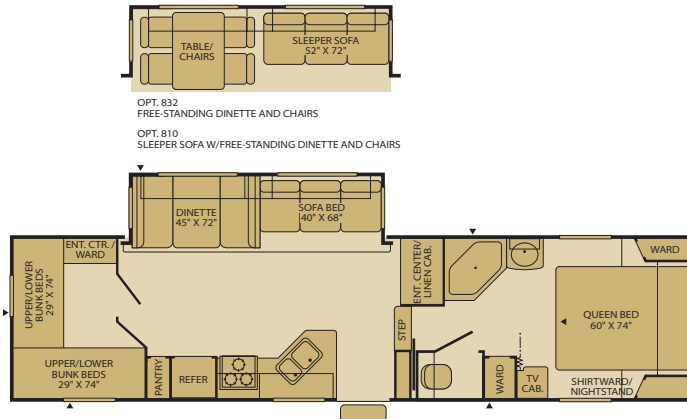
Mid Profile Fifth Wheel

2952BS ◆ ●
Single Slide-Out
Sleeps 10



Mid Profile Fifth Wheel

315BHS ◆ ●
Single Slide-Out
Sleeps 10



Mid Profile Fifth Wheel

To Our Customers...

To make sure that you get the maximum satisfaction out of your recreational vehicle purchase, there are several things you should know:

1. Learn all you can about the travel trailer or fifth wheel you're planning to buy. Don't rely on word of mouth. Get the facts about the actual trailer length, width, unloaded weight with options, Gross Vehicle Weight Rating, and cargo carrying capacity. These are usually available in the manufacturer's sales literature or from the Cargo Carrying Capacity Label located in each trailer. Be sure to check this information **before** you decide which unit to buy.
2. Verify the towing capacity of your tow vehicle. If you don't know, or aren't sure, you can ask at your automotive dealership. Be sure to match its tow rating to the loaded (not dry) weight of your trailer. Include the weight of water, additional accessories, clothing, food, and gear. To help Fleetwood travel trailer customers estimate this total weight, our Gross Vehicle Weight Ratings reflect the maximum weight of the trailer when fully loaded for camping. Be sure the weight of the tow vehicle plus the weight of your trailer do not exceed the Gross Combined Weight Rating of the tow vehicle.

Taking these simple steps before you buy will help ensure that your trailer and tow vehicle combination is just what you wanted.

Happy Camping!

Sleeping capacity based on standard layout. Optional furniture may increase or decrease sleeping capacity.

Weights and Measurements for Prowler

TRAVEL TRAILERS

WEIGHTS	220RBS	250FQ	250RKS	260BHS	260RLS	270FQS	300BHS	300FQS	3102BDS	320DBHS	330FKDS	3902BDS
GVWR (lbs) ¹	6,500	7,500	7,500	7,700	8,400	8,000	9,500	9,600	9,950	9,600	10,700	11,300
Gross Dry Weight (lbs) ^{2,6}	4,890	4,812	5,320	5,538	6,133*	5,933	6,708	6,797	7,558	6,827	8,213*	8,679*
Cargo Carrying Capacity (lbs) ^{3,6}	1,610	2,688	2,180	2,162	2,267*	2,067	2,792	2,803	2,392	2,773	2,487*	2,621*
Hitch Dry Weight (lbs) ^{2,6,9}	758	658	569	717	N/A	828	828	969	997	875	N/A	N/A

DIMENSIONS AND CAPACITIES

Length (Feet and Inches) ^{4,6,8}	24' 2"	25' 11"	26' 2"	27' 11"	29' 0"	27' 10"	32' 0"	31' 10"	33' 11"	33' 11"	33' 11"	39' 7"
Height (Feet and Inches) ^{5,6}	9' 8"	9' 11"	9' 8"	9' 11"	10' 2"	10' 2"	10' 2"	10' 2"	10' 4"	10' 2"	10' 2"	10' 2"
Fresh Water Holding Tank (gal) ^{6,7}	50	50	50	50	50	50	50	50	50	50	50	50
Grey Water Holding Tank (gal) ^{6,7}	40	40	40/40	40	40	40	40	40	40	40	40/40	40
Black Water Holding Tank (gal) ^{6,7}	40	40	40	40	40	40	40	40	40	40	40	40
Propane Capacity (lbs) ^{6,7}	60	60	60	60	60	60	60	60	60	60	60	60
Tire Size (Load Range)	ST205/ 75R 14(C)	ST205/ 75R 14(C)	ST205/ 75R 14(C)	ST205/ 75R 14(C)	ST225/ 75R 15(C)	ST205/ 75R 15(C)	ST225/ 75R 15(C)	ST225/ 75R 15(C)	ST225/ 75R 15(D)	ST225/ 75R 15(D)	ST225/ 75R 15(D)	ST225/ 75R 15(D)

FIFTH WHEELS

WEIGHTS	255BHS	275CKS	285RLS	2952BS	295RLS	315BHS
GVWR (lbs) ¹	9,700	9,500	9,950	11,300	11,300	11,300
Gross Dry Weight (lbs) ^{2,6}	6,826	6,874	7,777	8,119	8,022*	8,608*
Cargo Carrying Capacity (lbs) ^{3,6}	2,874	2,626	2,173	3,181	3,278*	3,092*
Hitch Dry Weight (lbs) ^{2,6,9}	1,264	1,196	1,545	1,374	N/A	N/A

DIMENSIONS AND CAPACITIES

Length (Feet and Inches) ^{4,6,8}	27' 11"	28' 3"	30' 4"	32' 5"	31' 11"	35' 0"
Height (Feet and Inches) ^{5,6}	11' 8"	11' 8"	11' 9"	11' 10"	11' 9"	11' 10"
Fresh Water Holding Tank (gal) ^{6,7}	50	40	40	50	50	50
Grey Water Holding Tank (gal) ^{6,7}	40	40	40/40	40/40	40/21	40/40
Black Water Holding Tank (gal) ^{6,7}	40	40	40	40	40	40
Propane Capacity (lbs) ^{6,7}	60	60	60	60	60	60
Tire Size (Load Range)	ST225/ 75R 15(C)	ST225/ 75R 15(C)	ST225/ 75R 15(D)	ST225/ 75R 15(D)	ST225/ 75R 15(D)	ST235/ 80R 16(D)

Weights and Measurements for Prowler Regal

WEIGHTS	TRAVEL TRAILERS				FIFTH WHEELS					
	270FQS	300FQS	320DBHS	330FKDS	255BHS	285RLS	2952BS	295RLS	305RLDS	315BHS
GVWR (lbs)¹	8,000	9,500	9,600	10,700	9,900	9,950	11,300	11,300	11,600	11,700
Gross Dry Weight (lbs)^{2,6}	6,128	6,917	7,076	8,337*	7,033	7,865	8,166	8,166*	9,037*	8,527
Cargo Carrying Capacity (lbs)^{3,6}	1,872	2,583	2,524	2,363*	2,867	2,085	3,134	3,134*	2,563*	3,173
Hitch Dry Weight (lbs)^{2,6,9}	850	882	1,010	N/A	1,333	1,569	1,398	N/A	N/A	1,598

DIMENSIONS AND CAPACITIES										
Length (Feet and Inches)^{4,6,8}	27' 10"	31' 10"	33' 11"	33' 11"	27' 11"	30' 4"	32' 5"	31' 11"	31' 11"	35' 0"
Height (Feet and Inches)^{5,6}	10' 2"	10' 2"	10' 2"	10' 2"	11' 8"	11' 8"	11' 9"	11' 9"	11' 9"	11' 10"
Fresh Water Holding Tank (gal)^{6,7}	50	50	50	50	40	40	50	50	50	50
Grey Water Holding Tank (gal)^{6,7}	40	40	40	40/40	40	40/40	40/40	40/21	40/21	40/40
Black Water Holding Tank (gal)^{6,7}	40	40	40	40	40	40	40	40	40	40
Propane Capacity (lbs)^{6,7}	60	60	60	60	60	60	60	60	60	60
Tire Size (Load Range)	ST205/ 75R 15(C)	ST225/ 75R 15(C)	ST225/ 75R 15(D)	ST225/ 75R 15(D)	ST225/ 75R 15(C)	ST225/ 75R 15(D)	ST225/ 75R 15(D)	ST225/ 75R 15(D)	ST225/ 75R 15(D)	ST235/ 80R 16(D)

- GVWR (Gross Vehicle Weight Rating) is the maximum permissible weight of this trailer when fully loaded. It includes all weight at the trailer axle(s) and tongue or pin.
- All dry weights are based on the standard model and do not include optional features or equipment.
- Cargo Carrying Capacity is determined by subtracting Gross Dry Weight from GVWR. Cargo Carrying Capacity includes all fluids, optional features, equipment, and personal cargo.
- Length taken from hitch or pin box to rear bumper (excludes accessories). Trailer length includes 3' 6" for hitch; fifth wheel includes standard pin box.
- Add 9" if equipped with optional roof air conditioner.
- Approximate.
- Water weight equals 8.3 lbs per gallon. Propane weight equals 4.2 lbs per gallon.
- Add 10" if equipped with optional spare tire and carrier.

- Hitch weights are dependent upon how the trailer is equipped with options, on-board cargo and tank fluid levels. Actual hitch weights may be higher or lower than shown. It is recommended that the tow vehicle and hitch for your trailer have sufficient capacity to accommodate actual usage.

* = Estimated weights

N/A = Not available at the time of printing.

IMPORTANT— PLEASE READ: Product information, photography and illustrations included in this publication were as accurate as possible at the time of printing. For further product information and changes, please visit our website at www.fleetwoodrv.com or contact your local Fleetwood dealer. Prices, materials, design and specifications are subject to change without notice. All weights, fuel, liquid capacities and dimensions are approximate. Fleetwood has designed its recreational vehicles to provide a variety of uses for customers. Each vehicle features optimal seating, sleeping, storage and fluid capacities. The user is responsible for selecting the proper combination of loads (i.e., equipment, fluids, cargo, etc.) to ensure that the vehicle's capacities are not exceeded.

Standard Features

Interior

THROUGHOUT

- **AM/FM Stereo/CD Player w/4 Cube Living Room Speakers, Woofer & 2 Bedroom Mounted Speakers**
- **Built-in Magazine Rack**
- **Solid Passage Doors**
- 6-Gallon Propane Water Heater
- Cable TV Hook-Up/Phone Jack/Satellite Ready
- Decorative Wall Mirrors
- Hydroflame Forced Air, Direct Spark Ignition Furnace w/Thermostat
- Key Hooks Conveniently Located
- Oversized Light Switches
- Prewired for Roof Air Conditioner
- Slide-Out End Windows
- Solid State Converter w/Built-In Battery Charger
- Wall Mount 12V Decor Light (Slide-Out Models)
- Water Heater Bypass

GALLEY

- **Dometic® Double Door Propane/Electric Refrigerator**
- **Microwave w/Electronic Touch Pad**
- **Pots & Pans Drawer**
- **Upgraded Vinyl Flooring**
- 12V Dinette Decor Light
- 2 Galley Electrical Receptacles
- 4 Galley Drawers
- 60/40 Sink
- Deluxe Full Extension Roller Bearing Drawer Guides
- Half Shelves in Galley Overhead Cabinet
- Magic Chef® 3-Burner (1 High-Output) 22" Range w/Oven
- Metal Single Lever Faucet
- Pantry w/Adjustable Shelves
- Range Hood w/12V Light & Exhaust Fan
- Residential Height Countertops
- Sink Cover
- Sink Sprayer
- Soap Dispenser
- Spice Rack
- Toe Kick

BEDROOM

- **350 lb. Fixed Bunk Weight Rating (150 lb. Weight Rating for Combo Bunks)**
- **Built-In Bedroom TV Viewing Area**
- **Lift-Up Bed Platform w/Below Bed Storage (Most Models)**
- **Wardrobes Accommodate Residential Size Clothes Hangers**
- Angled Front Bedroom Cabinetry (Mid Profile 5th Wheels)
- Blackout Bedroom Ceiling Vent (5th Wheels)
- Innerspring Mattress
- Miniblinds Throughout (Except Bunk Windows)
- Raised Panel Overhead Cabinet Doors

BATHROOM

- **Medicine Cabinet w/Mirrored Door**
- **Removable Wire Basket (Most Models)**
- 12V Power Exhaust Roof Vent
- Wall-Switched Ceiling Light

SAFETY/CONVENIENCE

- Carbon Monoxide Detector/Alarm
- Entry Assist Handle
- Fire Extinguisher
- Propane Detector/Alarm
- Smoke Detector/Alarm

Exterior

THROUGHOUT

- **Dual 30 lb. Propane Cylinders w/Regulator & Auto-Changeover**
- **Patio Awning**
- **Propane Bib (Low Pressure) w/Quick Release Fitting**
- **Rear Bumper w/Sewer Hose Carrier**
- **Split Tank Propane System (5th Wheels)**
- 120V Patio Receptacle
- 30" Radius Entry Door
- Extended Pin Box & Power Landing Gear (5th Wheels)
- Fiberglass Exterior
- Front & Rear Colored Skirt End Caps
- Hitch Light
- Laminated Sidewalls
- Molded Wheel Well Skirts
- Phone & Satellite Jacks
- Quick Drain Holding Tank (Fresh Water)
- Radius Truss Roof Rafters
- Stabilizer Jacks (Slide-Out Models)
- TV Antenna
- Welded, Dual Battery Rack (Travel Trailer Models Only)

BODY STRUCTURE

- **Cambered Chassis**
- **One-Piece Seamless Roof**
- I-Beam Main Rails

SAFETY/CONVENIENCE

- **Tinted Safety Glass Windows**
- **Wall Mounted Systems Monitor Panel**
- 120V GFI Circuit Protection (Galley/Bath/Patio)
- 4-Wheel Electric Brakes
- Break-Away Emergency Disconnect Brake

STORAGE

- **Locking, Lined Luggage Compartments w/Lights**
- Finished Luggage Door Openings
- Radius Luggage Doors

Options

THROUGHOUT (Interior)

- 13,500 BTU Air Conditioner
- Free Standing Chair (Most Models)
- Living Room TV
- Raised Panel Refrigerator Insert

BEDROOM

- Bedroom/Living Room Carpet (Most Models)
- Upgraded Mattress

BATHROOM

- Bathroom Skylight
- Tub/Shower Enclosure

THROUGHOUT (Exterior)

- Adjustable Hitch Coupler
- Bicycle Rack Receiver
- Exterior Shower
- Roof Ladder
- Spare Tire w/Cover

STORAGE

- Exterior Garage Storage (Available on Select Models)

OPTIONAL VALUE PACKAGE

- 6-Gallon Propane/110V DSI (Direct Spark Ignition) Water Heater

- Additional Sink Cover
- Lend-a-Hand Assist Handle
- Range Cover
- Water Purifier

OPTIONAL EXTREME EDITION PACKAGE

- Double Thickness Insulation
- Heated & Enclosed Holding Tanks Located Below the Floor
- Mud Flaps

Standard Features

Interior

THROUGHOUT

- **AM/FM Stereo/CD Player w/4 Cube Living Room Speakers, Woofer & 2 Bedroom Mounted Speakers**
- **Built-in Magazine Rack**
- **Deluxe Flexsteel® Furniture Styling**
- **Solid Passage Doors**
- **Ventilating Slide-Out End Windows**
- 3 Panel Refrigerator Insert
- 6-Gallon Propane Water Heater
- Cable TV Hook-Up/Phone Jack/Satellite Ready
- Day/Night Shades in Living Room
- Decorative Framed Wall Mirrors
- Fluted Solid Slide-Out Fascia Moulding
- Hydroflame Forced Air, Direct Spark Ignition Furnace w/Thermostat
- Key Hooks Conveniently Located
- Oversized Light Switches
- Prewired for Roof Air Conditioner
- Raised Panel Arched Upper Cabinet Doors
- Slide-Out Sofa Overhead 12V Decor Lighting
- Soap Dispenser
- Solid State Converter w/Built-In Battery Charger
- Wall Mount 12V Decor Light (Slide-Out Models)
- Water Heater Bypass

GALLEY

- **Dometic® Double Door Propane/Electric Refrigerator**
- **Half Shelves in Galley Overhead Cabinet**
- **Metal Single Lever Faucet**
- **Microwave w/Electronic Touch Pad**
- **Pantry w/Adjustable Shelves**
- **Pots & Pans Drawer**
- **Upgraded Vinyl Flooring**
- 12V Dinette Decor Light
- 12V Fluorescent Lighting
- 2 Galley Electrical Receptacles
- 22" Range w/Oven
- 4 Galley Drawers
- 60/40 Sink
- Deluxe Full Extension Roller Bearing Drawer Guides
- Magic Chef® 3-Burner (1 High-Output) 22" Range w/Oven
- Raised Panel Refrigerator Insert
- Range Hood w/12V Light & Exhaust Fan
- Residential Height Countertops
- Sink Cover
- Sink Sprayer
- Spice Rack
- Toe Kick

BEDROOM

- **350 lb. Fixed Bunk Weight Rating (150 lb. Weight Rating for Combo Bunks)**
- **Built-In Bedroom TV Viewing Area**
- **Lift-Up Bed Platform w/Below Bed Storage (Most Models)**
- **Upgraded Innerspring Mattress**
- **Wardrobes Accommodate Residential Size Clothes Hangers**
- Angled Front Bedroom Cabinetry (Mid Profile 5th Wheels)
- Bedroom Swivel Reading Lights
- Blackout Bedroom Ceiling Vent (5th Wheels)
- Miniblinds Throughout (Except Bunk Windows)

BATHROOM

- **Medicine Cabinet w/Mirrored Door**
- **Removable Wire Basket (Most Models)**
- **Single Lever Lavy Faucet**
- 12V Power Exhaust Roof Vent
- 3-Bulb Lavy Vanity Light
- Wall-Switched Ceiling Light

SAFETY/CONVENIENCE

- Carbon Monoxide Detector/Alarm
- Entry Assist Handle
- Fire Extinguisher
- Propane Detector/Alarm
- Smoke Detector/Alarm

Bold Denotes Fleetwood's Key Features

Exterior

THROUGHOUT

- **Dual 30 lb. Propane Cylinders w/Regulator & Auto-Changeover**
- **Fiberglass Exterior w/Deluxe Graphics**
- **Laminated Sidewalls w/Welded Aluminum Frame**
- **Patio Awning**
- **Propane Bib (Low Pressure) w/Quick Release Fitting**
- **Rear Bumper w/Sewer Hose Carrier**
- **Split Tank Propane System (5th Wheels)**
- 120V Patio Receptacle
- Aerodynamic Front Cap
- Aluminum Bumper Cover
- Extended Pin Box & Power Landing Gear (5th Wheels)
- Front & Rear Colored Skirt End Caps
- Hitch Light
- Molded Step Trim
- Molded Wheel Well Skirts
- Phone & Satellite Jacks
- Quick Drain Holding Tank (Fresh Water)
- Radius Truss Roof Rafters
- Stabilizer Jacks (Slide-Out Models)
- TV Antenna
- Upgrade Custom Wheels
- Welded, Dual Battery Rack (Travel Trailer Models Only)

BODY STRUCTURE

- **Cambered Chassis**
- **One-Piece Seamless Roof**
- I-Beam Main Rails

SAFETY/CONVENIENCE

- **Tinted Safety Glass Windows**
- **Wall Mounted Systems Monitor Panel**
- 120V GFI Circuit Protection (Galley/Bath/Patio)
- 4-Wheel Electric Brakes
- Break-Away Emergency Disconnect Brake

STORAGE

- **Locking, Lined Luggage Compartments w/Lights**
- **Radius Luggage Doors**
- Finished Luggage Door Openings

Options

THROUGHOUT (Interior)

- 13,500 BTU Air Conditioner
- Free Standing Chair (Most Models)
- Living Room TV
- Sleeper Sofa (Most Models)
- Water Purifier

BATHROOM

- Bathroom Skylight
- Tub/Shower Enclosure

BEDROOM

- Bedroom/Living Room Carpet (Most Models)
- Pillow Shams

THROUGHOUT (Exterior)

- Bicycle Rack Receiver
- Exterior Shower
- Roof Ladder
- Spare Tire w/Cover

STORAGE

- Exterior Garage Storage (Available on Select Models)

OPTIONAL VALUE PACKAGE

- 6-Gallon Propane/110V DSI (Direct Spark Ignition) Water Heater

- Additional Sink Cover
- Lend-a-Hand Assist Handle
- Range Cover
- Water Purifier

OPTIONAL EXTREME EDITION PACKAGE

- Double Thickness Insulation
- Heated & Enclosed Holding Tanks Located Below the Floor
- Mud Flaps

What Drives You?

Maybe it's feeling like you're the only one on Earth. Perhaps it's the unique sense of closeness with the great outdoors. Or, it might be the joy that comes from spending quality time with family and friends. Whatever the reason, we know that you have a strong drive to experience everything that comes with spending time on the road. And for more than 50 years, we've shared that passion with you. Because we're RV enthusiasts ourselves, you can see our passion in the vehicles we design and build. Own a Fleetwood, and you'll feel like you're not just traveling, but embarking on an experience unlike any other. Set your own course for adventure and get out there and explore the world around you. Once you do, you'll see what it is that drives us — it's you.



RV OWNERCARE*

The Fleetwood One-Year Hitch to Bumper Warranty Coverage*
This comprehensive program includes systems, appliances, components and construction – with no additional costs to you.

One-Year Full Warranty*
Leaving the Fleetwood dealership after you've purchased your RV doesn't mean leaving Fleetwood's commitment to your satisfaction behind. This complete warranty is unique because it's just that – complete.

Fully Transferable*
Because we don't hesitate to stand behind our products, the complete **warranty is fully transferable** during the 12 months of warranty coverage, which is a plus for resale value.

National Coverage
Traveling to Spokane? Buffalo? We've got you covered with one of the nation's largest trained service networks. In fact, **1,100 Fleetwood dealers** are just a phone call away.

Require these features when you purchase your new RV... Fleetwood does.



www.fleetwoodrv.com

*For complete info see your Fleetwood dealer. ©2005. Fleetwood Enterprises, Inc. Printed in the USA. Inventory control number PR06B2 10/05.

FLEETWOOD TRAVELCADE CLUB As a Fleetwood owner, you're eligible to become a member of our owners' group, Fleetwood Travelcade Club. It's a perfect way to meet other Fleetwood owners who love to travel across America and share in the RV lifestyle. Call (877) 577-2560 or visit www.fleetwood.com/clubs to learn more and join the fun!

FLEETWOODRV.COM To locate a dealer near you, visit our website or call 1-800-444-4905. We can also be contacted at Fleetwood Customer Relations, P.O. Box 7638, Riverside, CA 92513-7638.

IMPORTANT—PLEASE READ Product information, photography and illustrations included in this publication were as accurate as possible at the time of printing. For further product information and changes, please visit our website at www.fleetwoodrv.com or contact your local Fleetwood dealer. Prices, materials, design and specifications are subject to change without notice. All weights, fuel, liquid capacities and dimensions are approximate. Fleetwood has designed its recreational vehicles to provide a variety of uses for customers. Each vehicle features optimal seating, sleeping, storage and fluid capacities. The user is responsible for selecting the proper combination of loads (i.e.: equipment, fluids, cargo, etc.) to ensure that the vehicle's capacities are not exceeded.

Your local Fleetwood dealer is:

