

OPEN RANGE

2023 CONVENTIONAL TRAVEL TRAILERS



45.5757° N, 110.5819° W
Livingston, Montana

All but Conventional





2023 Open Range Conventional 20MB

Single Axle



172FB



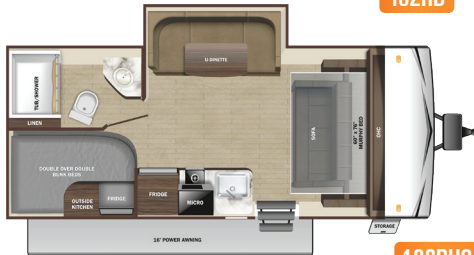
180BHS



198BH



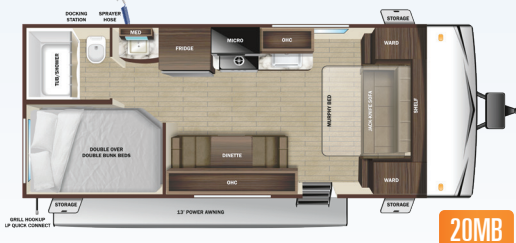
182RB



188BHS



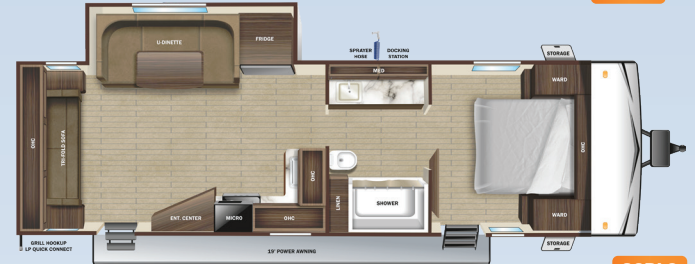
20FBS



20MB



26BH



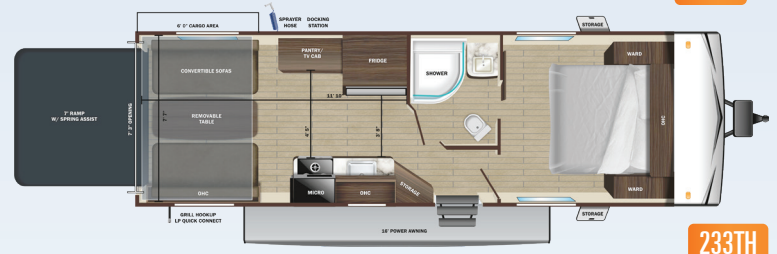
26RLS



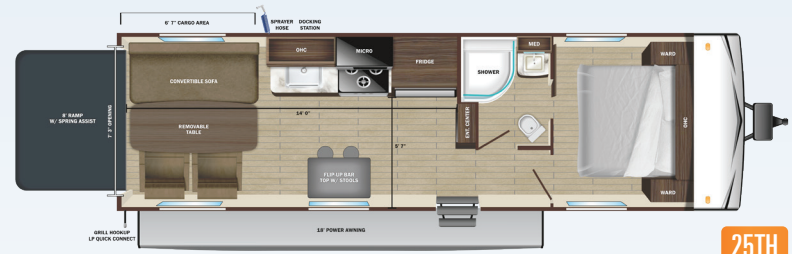
26BHS



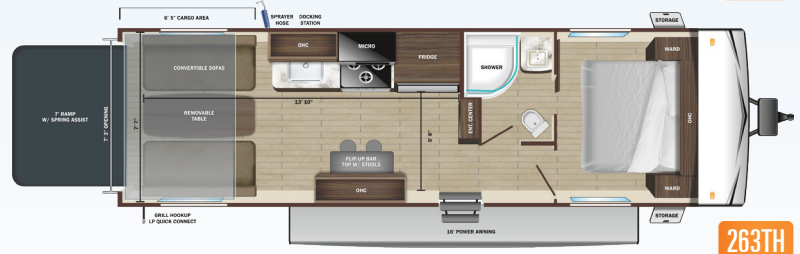
28BHS



233TH



25TH



263TH

Optional 6 cu. ft. gas/electric refrigerator (available on all floorplans shown)

STANDARD INTERIOR EQUIPMENT

- » 75 lb. ball bearing drawer guides
- » 81" interior height
- » AM/FM/Bluetooth® radio with indoor/outdoor zoned speakers
- » Closeable A/C vents
- » Flush floor slides with residential vinyl flooring
- » Foot flush toilet
- » Hardwood cabinet doors
- » LED interior lighting
- » Pleated blackout night shades
- » Pocket-screwed lumbercore cabinet construction
- » Pressed membrane kitchen countertops
- » Range hood
- » Residential high-rise kitchen faucet with pull-down sprayer
- » Single basin under-mount kitchen sink
- » Storage below main bed

STANDARD EXTERIOR EQUIPMENT

- » 120 GFCI protected receptacle
- » 5/8" main floor decking
- » 96" exterior width
- » Black front diamond plate protection
- » Exterior docking center (dual axle models)
- » Detachable power cords
- » Fiberglass insulation
- » Flexible LP lines
- » Galvanized wheel wells
- » Grab handle
- » In-frame battery rack
- » Magnetic baggage door catches
- » Magnum Roof™ system
- » Marine grade exterior speakers (2)
- » PVC roofing membrane (limited lifetime warranty)
- » Rain guttering with molded drip spouts
- » Rear camera prep
- » Safety bumper with drain hose carrier and end caps

- » Self-adjusting electric brakes and E-Z Lube® axles
- » Thermal Seal- enclosed, insulated, and heated underbelly and fully insulated roof with a PVC roofing membrane (dual axle models)
- » Tinted safety-glass windows throughout

CUSTOMER CONVENIENCE PACKAGE (MANDATORY)

- » 13,500 BTU roof mounted A/C
- » 17" oven (dual axle models)
- » 2-burner range with glass cover (single axle models)
- » 3-burner range with glass cover (dual axle models)
- » Dome style digital TV antenna
- » Gas/electric water heater
- » Microwave
- » Powered awning with LED lighting
- » Powered bathroom vent
- » Nitrogen filled radial tires
- » Residential vinyl flooring throughout
- » Solar prep
- » Stabilizer jacks (4)
- » Solid swing down step (main)
- » Entrance door with window and shade prep
- » Water heater bypass

OPTIONS

- » Moab Package - Increased ground clearance and off-road tires (Western built units only) (Aluminum Rims option N/A)
- » Fiberglass Sidewalls (N/A 233TH, 25TH, 263TH)
- » 14" Aluminum Rims 14" (N/A 26BHS)
- » 15" Aluminum Rims 15" (26BHS)
- » 15,000 BTU A/C (dual axle models)
- » 50 amp service with 2nd A/C (26BHS, 26RLS, 28BHS)
- » 6 cu. ft. gas/electric refrigerator
- » Ramp Patio (233TH, 25TH, 263TH)
- » Smart TV
- » Spare tire with carrier (mandatory on single axle models)

SPECIFICATIONS May Include Estimated Values	172FB†	180BHS†	190H†	182RB	188BHS	20FBS	20MB	26BH	26RLS	26BHS	28BHS	233TH	25TH	263TH
	Unloaded Vehicle Weight (lbs.)	3,075	3,760	3,460	3,470	4,215	4,595	4,183	4,740	5,780	5,730	6,165	5,240	5,250
Dry Hitch Weight (lbs.)	280	410	360	380	550	465	530	615	700	705	760	845	775	845
Gross Vehicle Weight Rating (GVWR)	3,750	4,900	4,450	4,250	4,900	6,000	5,250	6,500	7,500	7,500	7,600	7,500	7,600	7,500
Cargo (Gross)	675	1,140	990	780	935	1,405	1,067	1,760	1,720	1,770	1,435	2,260	2,350	2,480
Exterior Length (Overall)	19' 3"	22' 2"	22' 4"	22' 11"	23' 7"	23' 8"	24' 6"	29' 6"	30' 1"	30' 8"	33' 10"	28' 4"	30' 0"	30' 5"
Exterior Height	10' 2"	10' 6"	10' 7"	10' 2"	10' 2"	11' 0"	10' 6"	10' 7"	10' 11"	11' 1"	11' 1"	10' 6"	12' 5"	11' 1"
Exterior Width	8' 0"	8' 0"	8' 0"	8' 0"	8' 0"	8' 0"	8' 0"	8' 0"	8' 0"	8' 0"	8' 0"	8' 0"	8' 0"	8' 0"
Exterior Width (Slides Out)	N/A	10' 1"	N/A	N/A	10' 6"	9' 5"	N/A	N/A	11' 0"	11' 0"	11' 0"	N/A	N/A	N/A
Interior Height	6' 9"	6' 9"	6' 9"	6' 9"	6' 9"	6' 9"	6' 9"	6' 9"	6' 9"	6' 9"	6' 9"	6' 9"	8' 4"	6' 9"
Fresh Water Capacity (Gal.) (Eastern Built)*	26	26	26	26	26	48	48	48	48	48	48	48	48	48
Fresh Water Capacity (Gal.) (Western Built)*	36	36	36	36	36	90	90	90	90	90	90	90	90	90
Gray Waste Water Capacity (Gal.)	19.9	19.9	19.9	19.9	39	32.5	32.5	32.5	39	32.5	39	39	39	39
Black Waste Water Capacity (Gal.)	19.9	19.9	19.9	19.9	39	32.5	32.5	32.5	39	32.5	39	39	39	39
LP Capacity (lbs.)	20	20	20	20	20	60	60	60	60	60	60	60	60	60
Tire Size	14"	15"	15"	14"	15"	14"	14"	14"	14"	15"	14"	14"	14"	14"
Awning Size	9'	11'	13'	13'	16'	12'	18'	18'	19'	16'	18'	16'	18'	16'

*Includes Water Heater

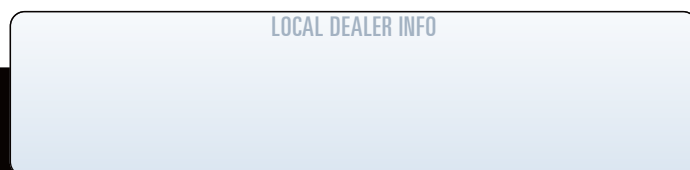
† Only available in Western United States and Western Canada

‡ Only available in Eastern United States and Eastern Canada

TO LEARN MORE VISIT
openrangerv.com



Highland Ridge RV – Part of the Jayco Family of Companies



Due to continual research and advances, manufacturer reserves the right to change specifications, design, price, and equipment without notice, and assumes no responsibility for any error in the literature. Some items shown are not included as standard or optional equipment. 2032619.2023