

EXCURSION®

EXCURSION®



2015

CLASS A DIESEL





Remarkable journeys start with Excursion.







Every adventure is made better when you're surrounded by the expert craftsmanship and abundant spaciousness of Excursion. It's time to take your enjoyment to the next level and experience the road like you never have before.

### Excursion Top Features

- 300HP Cummins® ISB 6.7L w/Exhaust Brake
- 2100MH Allison® Transmission
- 22.5" Aluminum Wheels
- Automatic 4-Point Hydraulic Leveling System
- 90-Gallon Fuel Tank
- Impressive Pass-Through Storage
- 84" Interior Height
- Sony® LED TVs
- Composite Tile Flooring Throughout
- Hardwood Cabinets, Door & Drawers
- Reversible Designer Comforter
- Washer/Dryer Combo Optional
- Hide-A-Loft Overhead Bed Option
- Frameless Flush Mount Windows
- Blindspot "Doggy" Window



# 2015 Graphics and Décor

Go to [FleetwoodRV.com](http://FleetwoodRV.com) and build your own Excursion!



Bronzed Onyx



Platinum Sandstone



Precious Metal

Both inside and out, there is a wide selection of colors, styles and finishes. From the moment you lay your eyes on an Excursion, the high-style graphics and décor collection welcome you with gracious beauty and contemporary design. We've paid attention to every detail. So wherever you are, you'll feel right at home.

BRONZED ONYX						CABINETRY
SOFA	ACCENT	BEDSPREAD	COUNTERTOP	FLOORING	CARPET	CINNABAR
PLATINUM SANDSTONE						SPICE
SOFA	ACCENT	BEDSPREAD	COUNTERTOP	FLOORING	CARPET	SPICE
PRECIOUS METAL						BUTTERNUT
SOFA	ACCENT	BEDSPREAD	COUNTERTOP	FLOORING	CARPET	BUTTERNUT

# Standard Features and Options

## INTERIOR THROUGHOUT

- 120V/12V AC/DC Converter
- 34,000 Btu/h Furnace (35B, 35C)
- 20,000/25,000 Btu/h Furnaces (33D, 35E)
- 6-Gallon Quick Recovery Water Heater (Gas/Electric)
- Dual 6V Deep-Cycle House Batteries
- Dual Lo-Profile A/C High Efficiency, Chill Grills & Bedroom Heat Pump
- LED Lighting
- HDMI Video System
- Centralized Control Monitoring
- Soft-Touch Vinyl Ceiling
- 84" Interior Ceiling Height
- PEX Plumbing System
- Crown Molding
- Fabric Lined Storage
- Spacious Wide-Body Design
- Day/Night Pleated Shades
- Deluxe Roller Bearing, Full-Extension Drawer Guides & Transit-Ship Locks
- Demand Water Pump w/Filter
- Waterpump Switches in Multiple Locations
- Raised-Panel Hardwood Cabinet Doors & Hardwood Cabinet Drawers
- Wall-to-Wall Vinyl Tile Flooring
- Wall Sconce Lighting (Select Models)
- Fan-Tastic® Power Roof Vent w/Wall Switch (2)
- Water Heater Bypass
- Whole-Coach Water Filtration System
- Wood Finish Return Air Intake for Furnace

### Optional

- CSA Package (Canadian Specs)\*\*
- Central Vacuum System
- Manual Footrest - Passenger
- Power Passenger Seat w/Power Foot Rest
- Power Driver Seat
- Washer/Dryer Combo
- Hide-A-Loft Drop-Down Queen Bed w/Driver & Passenger Curtains
- Driver/Passenger Pedestal Table
- Satellite Radio
- Manual Roller Shades

## DRIVER CONVENIENCE

- Automotive Style Wrap-Around Dash
- 3-Point Seatbelts at Driver & Front Passenger Seats (w/Adjustable Shoulder Straps)
- Auxiliary Start Circuit Switch
- Battery Disconnect System
- Cruise Control
- Power Driver/Front Passenger Shade/Sun Visor
- Driver/Front Passenger Soft-Touch Captain's Chairs w/Manual Reclining Back/Slide Controls
- Denso High-Output Auto A/C Heater Combo
- Passenger Cup Holder Console w/Integrated Magazine Rack
- Radio Switch
- Main/Auxiliary Power
- Air Suspension Dump Switch
- Driver Console Cup Holders
- Tilt/Telescoping Steering Wheel
- 110V Power Outlet at Dash
- (2)-12V Power Outlets at Dash
- Radio w/AM, FM, CD & DVD
- Color Back-Up Monitor
- Remote/Heated Rear-View Mirrors w/Side-View Cameras
- Intermittent Wiper Control
- Soft-Touch Automotive Dash
- Dual Monitors

### Optional

- Auto Generator Start

## GALLEY

- Sharp® Convection Stainless Steel Microwave Oven w/Built-in Range Hood & Lights
- Adjustable Cabinet Shelves (Select Cabinets)
- Dometic® 8 cu.ft. 2-Door Refrigerator (33D, 35E)
- Residential Refrigerator w/2000 Watt Inverter & 2 additional House Batteries (Standard on 35B, 35C)
- Single-Handle Galley Faucet w/Pullout Sprayer
- Hardwood Overhead Face Frames
- Polished Solid-Surface Countertop w/Deco Edge
- Solid-Surface Sink & Range Covers
- Full Mosaic Glass Tile Backsplash
- Under-Galley Shelving & Wastebasket
- Hi-Def Laminate Dinette Tabletop
- Cabinet Toe Kicks
- Large, 50/50 Dual Stainless-Steel Sink
- LED Task Lighting
- Galley Window w/Mini Blinds
- Pull-Out Pantry
- 3-Burner High-Output Cooktop
- Dream Dinette Mechanism (33D, 35E)
- Fan-Tastic® Power Roof Vent w/Wall Switch (2)

### Optional

- Residential Refrigerator w/2000W Inverter & 2 additional House Batteries (33D, 35E)
- Dometic 8 cu. ft. Refrigerator w/Ice Maker (33D, 35E)

## LIVING ROOM

- Sony® 40" LED HDTV Blu-ray® Ready
- Sony 5.1 Home Theater System w/Built-in AM/FM/DVD & Surround Sound Speakers
- Flexsteel® Soft Touch Residential Style Seating
- TV Antenna w/Signal Booster
- Entry Assist Handle
- Hardwood Overhead Face Frames

## BEDROOM

- Exclusive Dream Easy Mattress
- Overhead Cabinets
- Designer Reversible Comforter
- Décor Pillows
- Day/Night Shades
- Rear Speakers
- Dual 110V Outlets
- Chair Rail Molding
- Dual-Tone Wall Accents
- Full Length Hanging Wardrobe w/Adjustable Shelves
- Under-Bed Storage
- Night Stands
- Bunk Beds (35E)

### Optional

- Queen Dream Easy Memory Foam Mattress
- Sony® 32" LED HDTV

## BATHROOM

- A/C Venting
- Fan-Tastic® Power Roof Vent w/Wall Switch
- Glass Shower Enclosure w/Skylight
- Brushed Nickel Single-Handle Faucet
- One Piece Fiberglass Shower w/Convenience Shelf
- Adjustable Shelving (Select Cabinets)
- Stainless Steel Sink
- Brushed Nickel Towel Bars & Rings
- Hardwood Bath Door/Trims
- Porcelain Toilet w/Water Saver
- LED Task Lighting
- Decorative Tile Backsplash

## SAFETY/CONVENIENCE (INTERIOR)

- Carbon Monoxide Detector/Alarm
- Energy Management System (EMS) w/Soft-Start
- Multiple Seatbelt Locations
- Propane Detector/Alarm
- Smoke Detector/Alarm
- Fire Extinguisher
- 30" Wide-Entry Door

## EXTERIOR THROUGHOUT

- Hydraulic 4-Point Automatic Levelers
- 50-Amp Service w/LED Power Cord Indicators
- 6.0 kW Onan® Quiet Diesel Generator
- Awning Rail/Drip Molding
- LED Clearance Lights
- Door-side 110V Patio Receptacle
- Pre-Wired For Easy DSS Antenna Installation
- Single-Pane Tinted Windows w/Screens
- Fiberglass Wheel-Well Trims
- Full-Body Paint
- Power Patio Awning w/Wind Sensor Retract
- Fiberglass Front Cap
- Fiberglass Rear Cap w/High-Mounted Center Brake Light
- Water Pump Switch (located in service compartment)
- Pre-Wired for Exterior Entertainment System (Located In Basement)
- Park Cable Receptacle
- Utility Compartment w/Exterior Shower
- Pet Window
- Frameless Flush Mount Windows

### Optional

- Electrical System w/Neutral Loss Protection
- Dual-Glazed Windows

## AUTOMOTIVE

- Fog Lamps
- Mud Flaps
- Single-Motor Windshield Wipers w/Wet Arm
- Underhood Utility Light
- Large One-Piece Bonded Windshield
- Heated Power Exterior Mirrors w/Turn Signals
- 22.5" Aluminum Wheels
- Modern LED Running Lamps

## SAFETY/CONVENIENCE (EXTERIOR)

- 20' Sewer Hose
- 4-Wheel ABS Brakes
- Automotive Safety Glass
- Daytime Running Lights
- Easy-Sweep Flooring at Entry Step
- Entry Door w/Screen Door & Deadbolt Lock
- Entry Assist Handle
- Power Entry Step
- Toilet Tank San-T-Flush™ System
- Touch Sensor Tank Monitoring System
- Rear, Front and Side Marker Lights (Select LED)
- Porch Light (Door-side)
- Large Egress Window in Bedroom

## STORAGE

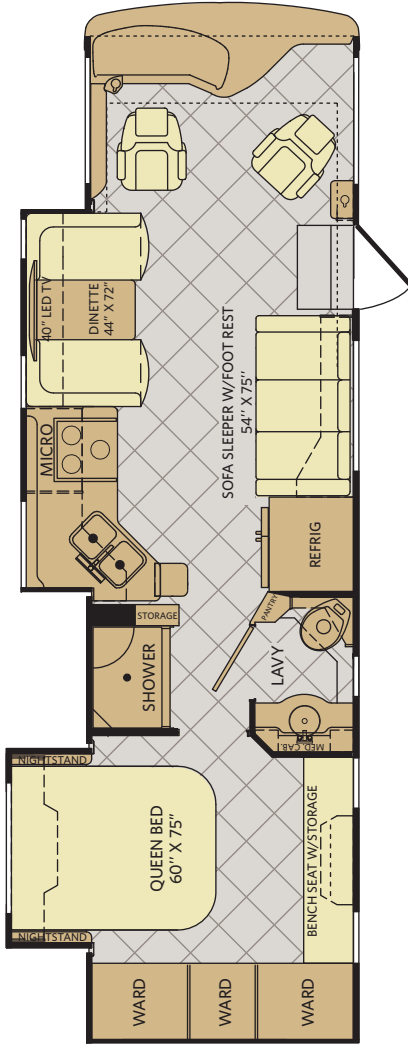
- Continuous One-Piece Compartment Seals
- Pass-Through Storage
- Lighted Compartments
- Large Lighted Roto-Molded Polyethylene, w/wash-out compartment drains
- Side-Swing, Insulated Aluminum Luggage Doors w/Single Paddle Latch & Corrosion Resistant Steel Hinges

## BODY STRUCTURE

- Aluminum Interlocking Floor/Wall/Ceiling Framing
- Heated Water & Holding Tank Compartments
- Radius Roof w/Ducted A/C
- Basement Storage
- Vacu-Bond® Floors & Ceilings
- Vacu-Bond Walls w/Smooth, High-Gloss Exterior Fiberglass

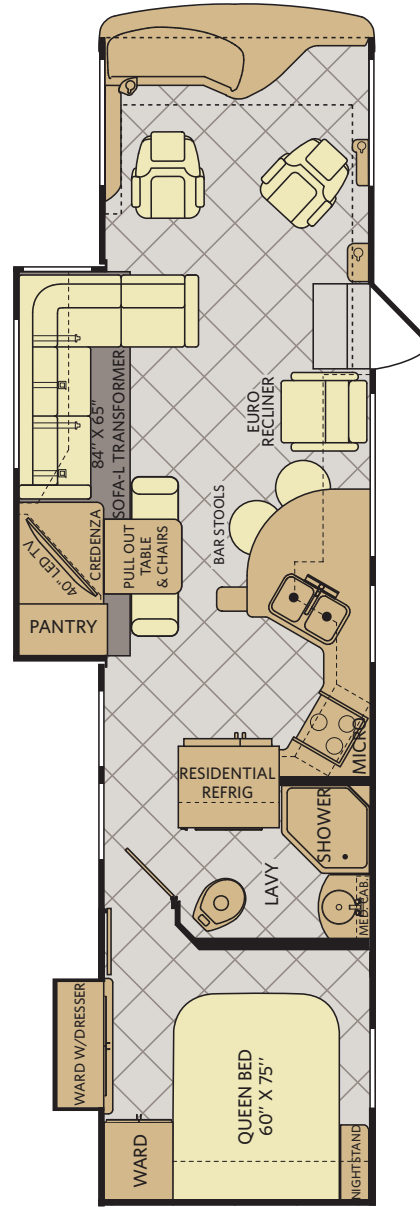
Not all options are available on all floor plans. See your Fleetwood dealer for details.  
\*\*CSA standards may require substitution or deletion to achieve conformance.

# Excursion Floor Plans



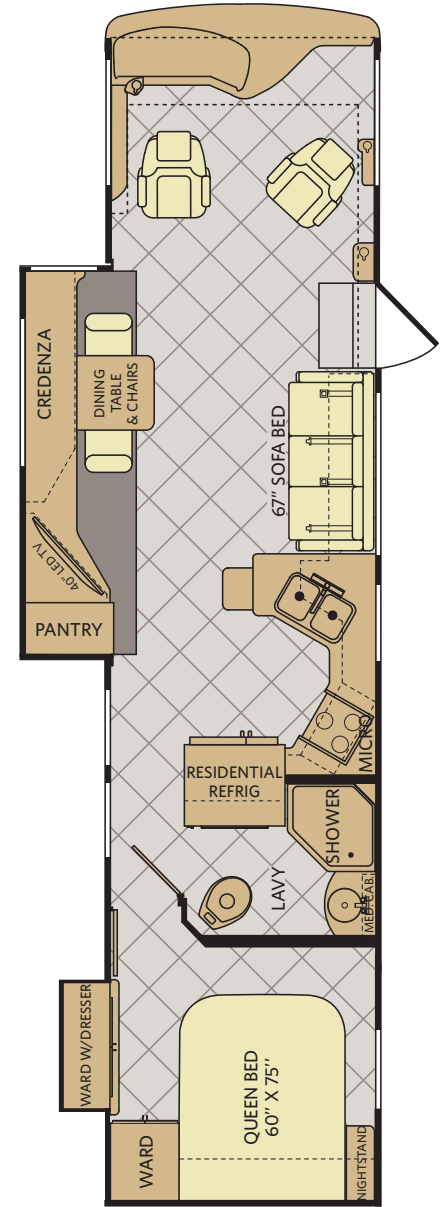
**33D**

Available options: 084, 093, 126, 144, 146, 186, 217, 853



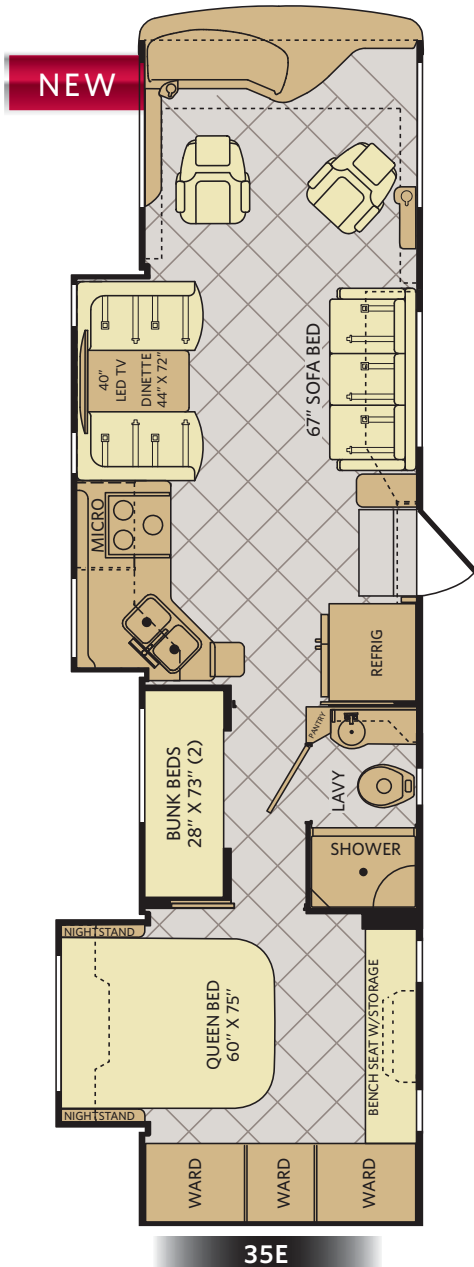
**35B**

Available options: 084, 093, 126, 186, 217, 853



**35C**

Available options: 084, 093, 126, 186, 217, 853



35E

Available options: 084, 093, 126, 144, 146, 186, 217, 853

## FLOOR PLAN OPTIONS



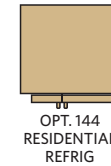
OPT. 084  
BEDROOM  
32\"/>



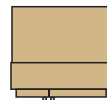
OPT. 093  
EXTERIOR  
ENTERTAINMENT  
CENTER



OPT. 126  
WASHER  
/DRYER



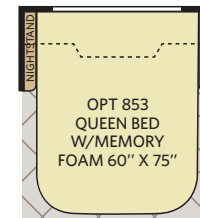
OPT. 144  
RESIDENTIAL  
REFRIG



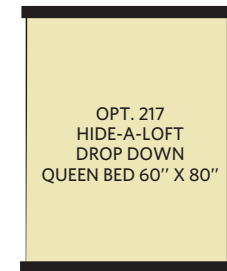
OPT. 146  
DOMETIC 8 CU. FT.  
REFRIG  
W/ICE MAKER



OPT. 186  
DRIVER/PASSENGER  
PEDESTAL TABLE



OPT. 853  
QUEEN BED  
W/MEMORY  
FOAM 60\"/>



OPT. 217  
HIDE-A-LOFT  
DROP DOWN  
QUEEN BED 60\"/>

### Addendums

- GVWR (Gross Vehicle Weight Rating) is the maximum permissible weight of this fully loaded motorhome. The GVWR is equal to or greater than the sum of the (UVW) unloaded vehicle weight plus the (OCCC) occupant cargo-carrying capacity.\*
  - GAWR (Gross Axle Weight Rating) is the maximum permissible loaded weight a specific axle is designed to carry.
  - GCWR (Gross Combined Weight Rating) is the value specified by the motorhome manufacturer as the maximum allowable loaded weight of this motorhome with its towed vehicle. Towing and braking capacities may be different. Refer to Fleetwood and chassis manufacturer's manuals for complete information.
  - Length measured from front bumper to rear bumper (excludes accessories).
  - Excludes safety equipment and awnings.
  - Motorhomes feature a body width over 96" which will restrict your access to certain roads. Before purchasing, you should research any state and/or province road laws which may affect your usage.
  - Tank manufacturer's listed water capacity (WC). Actual propane capacity is 80% of water listing as required by the safety code.
- † The chassis manufacturer recommends the installation of a supplemental brake control system to activate the brakes on the vehicle or trailer you are towing. Hitch receiver ratings expressed are maximum for the hitch receiver installed and may require the purchase of additional equipment that is dependent on the weight of the towed load. Consult with hitch receiver manufacturer for further information.
- †† Minimum Towable Load is the available weight, up to GCWR, when the coach is fully loaded to maximum GVWR. However, if the coach is loaded to something less than maximum GVWR, that extra available weight can be added to your Towable Load. For example, if your coach is loaded to 1000lbs less than maximum GVWR, your Towable Load increases accordingly.

\* UVW and OCCC are found on the label containing the federal certification tag in each RV.



# Weights & Measurements



CHASSIS	POWER BRIDGE®			
MODELS	33D	35B	35C	35E
Wheelbase (inches)	208"	242"	242"	242"
GVWR (lbs) <sup>1</sup>	26,000	26,000	26,000	26,000
Front GAWR (lbs) <sup>2</sup>	10,500	10,500	10,500	10,500
Rear GAWR (lbs) <sup>2</sup>	17,500	17,500	17,500	17,500
GCWR (lbs) <sup>3</sup>	30,000	30,000	30,000	30,000
Hitch Rating Weight (lbs) <sup>1</sup>	10,000	10,000	10,000	10,000
Fuel Capacity (gal)	90	90	90	90

## POWER BRIDGE® CHASSIS

**Model:** Freightliner® XCS Series

**Engine:** Cummins® ISB 6.7L

**Transmission:** Allison® 2100 MH 6-Speed  
w/Electronic Shifter

**Alternator:** Delco Remy 160 Amp

**Torque:** 660 lb-ft @ 1,600 RPM

**Horsepower:** 300HP

## DIMENSIONS & CAPACITIES

MODELS	33D	35B	35C	35E
Overall Length (inches) <sup>4</sup>	33' 11"	36' 9"	36' 9"	36' 9"
Overall Height (suspension inflated)	11' 10"	11' 10"	11' 10"	11' 10"
Overall Height (suspension deflated)	11' 7"	11' 7"	11' 7"	11' 7"
Overall Width (maximum) <sup>5,6</sup>	102"	102"	102"	102"
Interior Height (maximum)	84"	84"	84"	84"
Interior Width (maximum)	96"	96"	96"	96"
Patio Awning Width	17'	20'	20'	17'
Interior Storage (cu. ft.)	140	170	170	160
Exterior Storage (cu. ft.)	133	161	161	161
Fresh Water Holding Tank (gal)	77	77	77	77
Grey Water Holding Tank (gal)	60	60	60	60
Black Water Holding Tank (gal)	32	32	32	32
Appliance Propane Tank (gal) (WC) <sup>7</sup>	28.2	28.2	28.2	28.2
Water Heater Tank (gal)	6	6	6	6

## WHY FLEETWOOD?



### Quality

There's no cutting corners. Skilled craftsmen build every Fleetwood RV for maximum durability and longevity.



### Trust

More people trust Fleetwood RV. After all, we've spent over 60 years perfecting motorhomes, earning the loyalty of generations of RVers.



### Passion

We're truly passionate about the RV lifestyle. Fleetwood RV was founded by RV enthusiasts, and that tradition continues today.



### Safety

You've got precious cargo. So we've engineered dozens of innovative safety features into our motorhomes to give you more peace of mind.



### Service

Help is nearby with 24/7 emergency Fleetwood RV Trusted Roadside Assistance\*. And when you need an upgrade or repair, you'll find Fleetwood RV dealers all across North America ready to assist you.



### Warranty

Exclusive RV OwnerCare\*\* warranty. See your Fleetwood RV dealer for details.

\* All 2015 Fleetwood RV Motorhomes include a 1-year emergency roadside assistance membership. For complete info, see your Fleetwood RV dealer.





Visit [FleetwoodRV.com](http://FleetwoodRV.com)

#### **RV OWNERCARE\*\***

Limited one-year/15,000-mile coach warranty and three-year/45,000-mile structural warranty, whichever occurs first, and it is fully transferable for the first 12 months. RV OWNERCARE is one of the RV industry's most comprehensive programs and includes systems, appliances, components and construction, with no deductible and no service charge. RV OWNERCARE coverage is provided by a company that will be around in the future to service your needs.

See your nearest Fleetwood RV dealer for a full explanation of benefits and restrictions.

#### **FLEETWOOD MOTORHOME ASSOCIATION**

As a Fleetwood RV owner, you're invited to become a member of the Fleetwood Motorhome Association (FMA). Becoming a member is the perfect way to meet other Fleetwood owners who love to travel across America and share in the RV lifestyle. Visit the FMA website at [www.fma4fun.org](http://www.fma4fun.org) to learn more and join the fun.

#### **CONTACT US**

To locate a dealer near you, visit our website at [www.fleetwoodrv.com](http://www.fleetwoodrv.com) or call 1-800-322-8216. We can also be contacted at Fleetwood RV Customer Relations, P.O. Box 1007, Decatur, IN 46733.

**IMPORTANT—PLEASE READ:** Product information, photography and illustrations included in this publication were as accurate as possible at the time of printing. For further product information and changes, please visit our website at [www.fleetwoodrv.com](http://www.fleetwoodrv.com) or contact your local Fleetwood RV dealer. Prices, materials, design and specifications are subject to change without notice. All weights, fuel, liquid capacities and dimensions are approximate. Fleetwood RV has designed its recreational vehicles to provide a variety of uses for its customers. Each vehicle features optimal seating, sleeping, storage and fluid capacities. The user is responsible for selecting the proper combination of loads (i.e., occupants, equipment, fluids, cargo, etc.) to ensure that the vehicle's capacities are not exceeded.

#### **YOUR LOCAL FLEETWOOD RV DEALER IS:**