

Crossfire, Bullet & Premier

EASTERN TRAVEL TRAILERS

# GET AWAY IN STYLE



# The ultimate ownership experience.

The goal of Keystone RV Company is to surprise and delight our owners at each and every touchpoint. We're happy when our campers are happy, and we are committed to providing the very best ownership experience in the industry.



**Keystone RV  
Company**

## 1 EASIER SHOPPING.

At Keystone, we make choosing an RV as easy as finding the Big Dipper on a dark summer night. With comprehensive online product information, Key Connect™ product advisors, and an unparalleled dealer network, we will help you select the perfect RV for your family's adventure.

## 2 INNOVATIVE THINKING.

The road's a nicer place when you have the industry's smartest features behind you. Keystone leads the pack in patented innovations that make our RVs safer, more comfortable, and easier to operate.

## 3 LONG HAUL QUALITY.

To keep you on the road, there are certain things we just won't build a Keystone RV without. Game-changing features like our Unified Wiring Standard, Tru-Fit™ five-point slide construction, and no-fail Tuf-Lok™ A/C duct joiners combined with exhaustive testing and inspections are some of the reasons why Keystone is able to offer our owners the industry's best 3-year limited structural warranty.

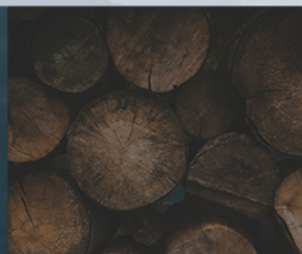
## 4 WORRY-FREE CUSTOMER SERVICE.

Wherever the road takes you, you're never too far from an authorized Keystone service center. We also offer live service assistance, ultra-fast parts shipping, online maintenance tips and tricks, and a single-point warranty claims policy. *That's* peace of mind.

## 5 KEYSTONE NATION.

When you choose Keystone, you become a part of one of the largest camping families in the country. We're Keystone Nation. A friendly community where people share photos, travel tips and amazing stories – all in the spirit of camaraderie and adventure. Come join us.

Experience the Bullet lifestyle by visiting [#keystonebullet](https://www.instagram.com/keystonebullet)



# Keystone EXCLUSIVE Innovations

Year after year, Keystone RV's experienced team delivers Built For the Long Haul quality you expect and exclusive innovations you won't find anywhere else.



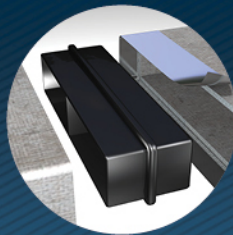
## 3-year Limited Structural Warranty, 1-year Limited Base Warranty

Every new Keystone RV comes with the industry's best three-year limited structural warranty AND a one-year limited base warranty. Ask your dealer, visit [keystonerv.com](http://keystonerv.com), or call Keystone Owner Relations for details.



### KeyTV™

No more connection guesswork or poor reception. KeyTV offers a game-changing, single point of control of over-the-air, cable, and satellite feeds. Visit us online for more information.



### Tuf-Lok Thermoplastic Duct Joiners

Tuf-lok thermoplastic duct joiners form a permanent, crush-resistant seal in your air-conditioning duct.



### Color-Coded Unified Wiring Standard

Easy-to-trace circuits simplify electrical and entertainment system troubleshooting.



### In-floor Heating Ducts

Distributes heat evenly for greater comfort.



### 4G LTE and Wi-Fi Prep

All Bullets are equipped with a new Furriion® antenna that integrates 4G LTE and Wi-Fi with standard VHF/UHF/AM/FM



### Tru-fit™ Slide Construction

A more durable slide room design that minimizes functional motor and structural stress, resists leaking.

# BULLET



CROSSFIRE | BULLET | PREMIER

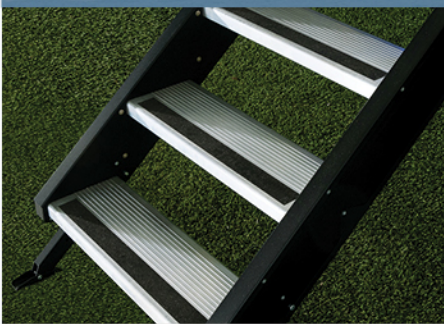
## Bullet has the ultimate lineup for any adventure.

Bullet is the ultra-light coach with a luxurious look and feel, an abundance of practical features, innovative floorplans, and unrivaled towability at the lightest weight possible. It truly is the original luxury lightweight RV. With the request for more amenities in new, groundbreaking floorplans, Bullet delivered once again with the Bullet Premier. Since its inception, Bullet has always been committed to listening to the customer and building what they want most. That simple approach not only built the brand into the #1 selling travel trailer in its segment, it resulted in the easiest to tow ultra-light that truly feels like home.

For more information, please visit [keystonerv.com/bullet](http://keystonerv.com/bullet)

### Peace of Mind

Easier towing and innovative features designed to minimize stress and maximize your camping fun.



**MORryde® StepAbove™ (Premier only)**  
Ultra-stable and secure entry steps with Keystone kickplate.



**State-of-the-art Entertainment Center (n/a Crossfire)**  
With 32" flat panel TV, Bluetooth-enabled AM/FM/CD/DVD with auxiliary stereo input.



**Heavy Duty Hidden Hinges**  
Hidden hinges streamline Bullet's cabinet design for a high-end residential look and feel.



**Norco™ Stabilization System (Premier only)**  
Press OK and walk away! Electric jacks with large footpads and five points of contact quickly and consistently level and stabilize your RV.



**Dream Dinette (n/a Crossfire)**  
No more table legs getting in the way! Makes for easy setup and easily converts into a bed.



**Pegboard Lined Pass-Through Storage (n/a Crossfire)**  
Easily organize, stow and access tools, fishing equipment and other camping gear.



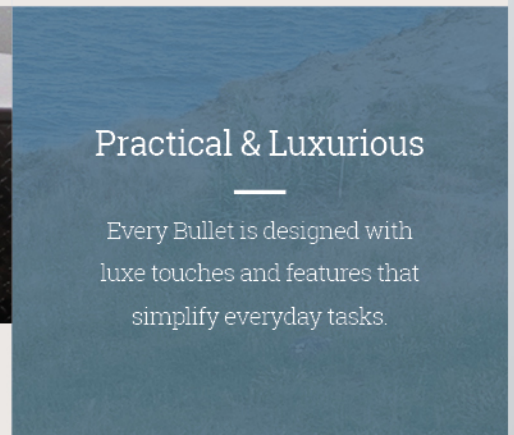
**Furrion® Stainless Steel Kitchen Appliances**  
Chef-inspired appliances that give you the perfect blend of performance, precision and style.



**LED Interior Lighting**  
One of the most energy-efficient and rapidly-developing lighting technologies, quality LED light bulbs last longer and are more durable.



**Slam Latch Baggage Doors (n/a Crossfire)**  
Durable and convenient, these latches lock with just a slam of the baggage door, providing you with ultimate peace of mind that your valuables are secure.



### Practical & Luxurious

Every Bullet is designed with luxe touches and features that simplify everyday tasks.



more product detail at  
[www.keystonerv.com/bullet](http://www.keystonerv.com/bullet)



## Coastal Cottage Style

Without question, Bullet is charting a new course in interior design within the RV industry. Taking cues from east coast cottage style, gray-painted cabinetry and wall coverings are paired with weathered wood-inspired resilient flooring. Crisp white marbled countertops, glass panel doors and stainless steel fixtures and appliances complete a fresh and tranquil environment for your family.



### A Fresh Perspective

Bullet offers a choice of two décor colorways: the airy Sonoma (pictured left) and more dramatic Flagstone (pictured right).



### Bringing the Outside Inside

Four extra-large windows surround Bullet's new Dream Dinette™ allowing you to enjoy the beauty of your surroundings even when you're inside.





more product detail at  
[www.keystonerv.com/Bullet](http://www.keystonerv.com/Bullet)

## Crossfire | TRAVEL TRAILERS

- New Coastal Cottage interior
- Four stabilizer jacks
- LED awning light
- Dual propane tanks with cover
- Friction-hinge entry doors
- Bluetooth AM/FM Stereo
- Stainless steel microwave
- Tub surround with shelves
- Oversized double basin sink with high-rise faucet
- Continuous-edge countertops
- Hidden hinges on cabinet doors
- Interior LED lights
- Enclosed underbelly
- Roof mount 13,500 BTU A/C



**Stainless Steel Microwave**  
Stainless steel microwave adds to the modern feel of the bright interior.



**Interior LED Lights**  
LED lighting draws less energy than regular bulbs and gives off less heat.

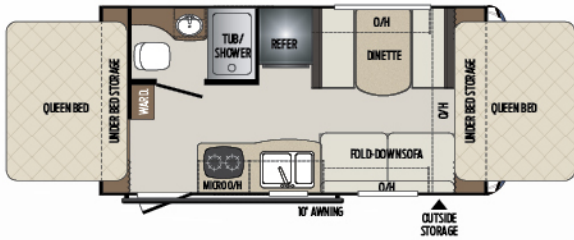


**Continuous-Edge Kitchen Countertops**  
Ultra-durable Whitewater™ continuous-edge countertops add a clean, modern touch to the kitchen area.

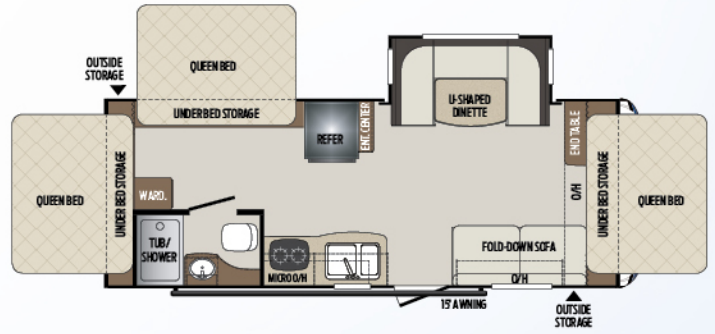


**Heavy Duty Hidden Hinge**  
Hidden hinges on the cabinets offer a residential look and a high-end feel.

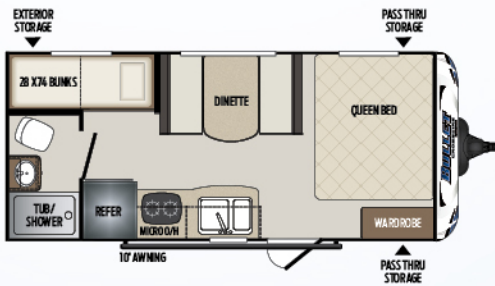




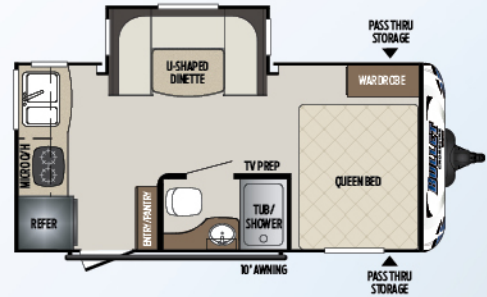
**1650EX** | Two-tent expandable  
Weight: 3420 LBS. | Length: 19' 6"



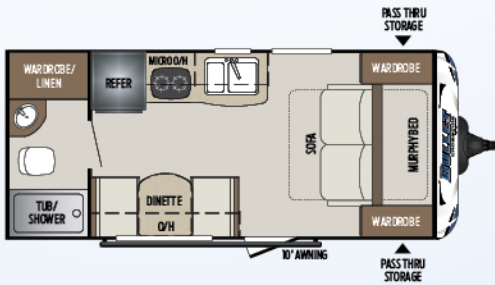
**2190EX** | Three-tent expandable w/dinette slide  
Weight: 4480 LBS. | Length: 24' 11"



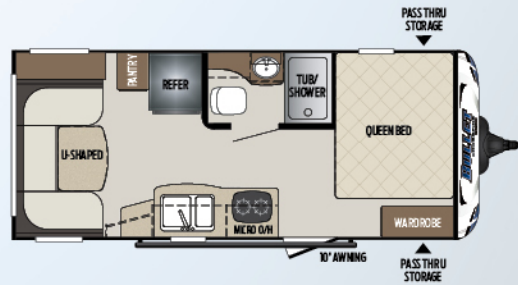
**1700BH** | Bunkhouse, single axle  
Weight: 3355 | Length: 21' 4"



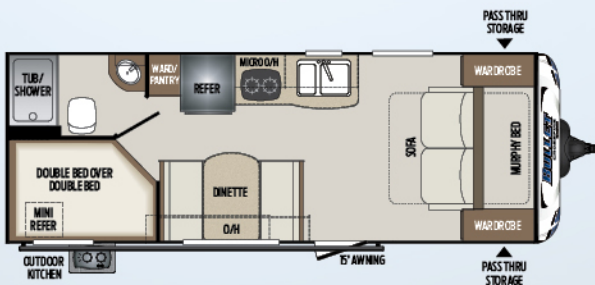
**1750RK** | Rear kitchen w/dinette slide  
Weight: 3595 LBS. | Length: 20' 4"



**1800RB** | Rear bath w/murphy bed  
Weight: 3310 LBS. | Length: 21' 4"



**1900RD** | Rear dinette, no slides  
Weight: 3360 LBS. | Length: 21' 11"



**2200BH** | Bunkhouse w/outside kitchen  
Weight: 4110 LBS. | Length: 25' 4"



more product detail at  
[www.keystonerv.com/Bullet](http://www.keystonerv.com/Bullet)

# Bullet | TRAVEL TRAILERS

- New Coastal Cottage interior
- 60" x 80" queen bed (N/A 330BHS)
- LED awning light
- 9" triple entry steps
- Aluminum wheels
- Power tongue jack
- Friction-hinge entry doors
- Peg board in pass-through storage
- Outdoor TV prep
- Dream Dinette™
- Stainless steel sink
- Bluetooth AM/FM stereo with CD, DVD, USB and AUX inputs
- Furrion® flush-mounted glass cooktop and low-profile hood vent with stainless steel microwave
- Outdoor kitchen with refrigerator and two-burner cooktop (N/A 221RBS, 248RKS, 269RLS, 273BHS)
- 32" LED TV (N/A 261RBS)
- 42" LED TV (261RBS)
- Continuous-edge countertops
- Heavy duty, shaker-style, painted cabinet doors with hidden hinges
- Two rows of interior LED lights in living area
- Backsplash behind range (N/A select floorplans)
- KeyTV™ Keystone's revolutionary single-source, easy-to-use controller for over-the-air, cable and satellite television



**Hidden Hinges**  
 Hidden hinges on the cabinets offer a residential look and a high-end feel.

**Furrion® Kitchen Appliances**  
 Furrion® flush-mounted glass cooktop and low-profile hood vent with stainless steel microwave.

**Dream Dinette**  
 No more table legs getting in the way! Makes for easy setup and easily converts into a bed.

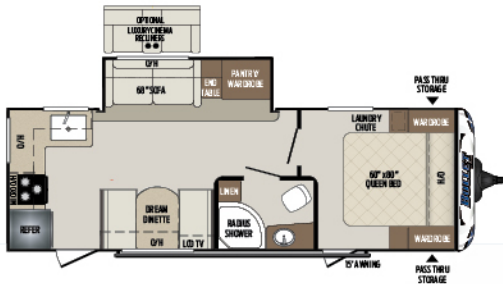
**Continuous-Edge Kitchen Countertops**  
 Ultra-durable Whitewater™ continuous-edge countertops add a clean, modern touch to the kitchen area.



**221RBS** | Rear bath, one slide  
 Weight: 4650 LBS. | Length: 26' 8"



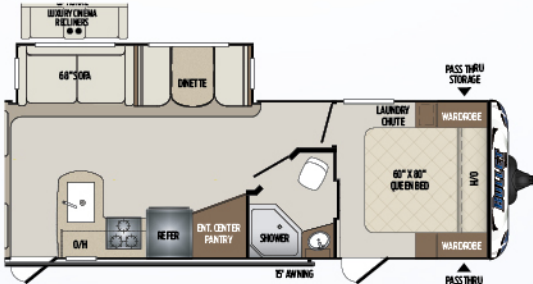
**243BHS** | Bunkhouse, one slide  
 Weight: 4940 LBS. | Length: 28' 10"



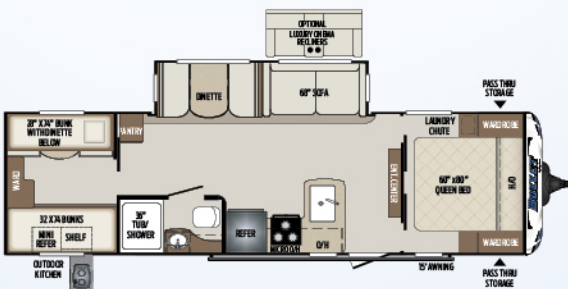
**248RKS** | Rear kitchen, one slide  
Weight: 5148 LBS. | Length: 29' 10"



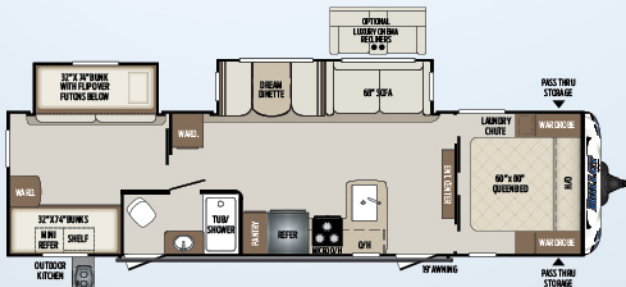
**257RSS** | Rear sofa, one slide  
Weight: 5158 LBS. | Length: 29' 11"



**269RLS** | Rear living, two entries  
Weight: 5449 LBS. | Length: 32' 5"



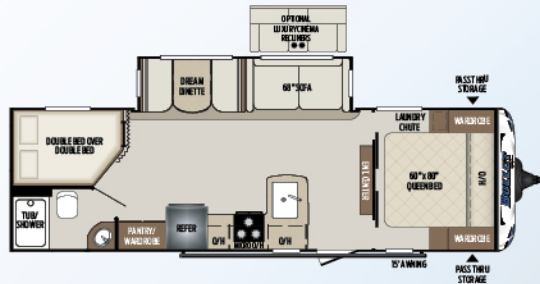
**287QBS** | Quad bunkhouse, outside kitchen  
Weight: 5840 LBS. | Length: 33' 10"



**308BHS** | Bunkhouse, two slides  
Weight: 6397 LBS. | Length: 36'



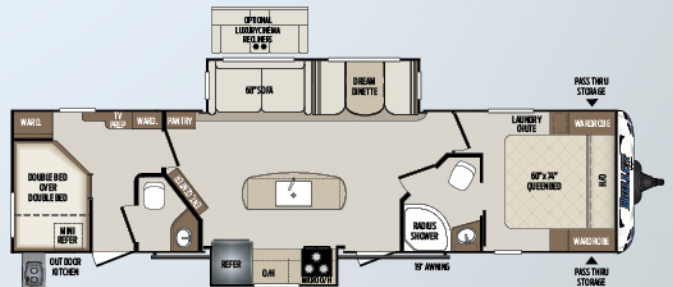
**261RBS** | Rear bath, outside kitchen  
Weight: 5465 LBS. | Length: 31'



**273BHS** | Bunkhouse, one slide  
Weight: 5365 LBS. | Length: 31' 3"



**290BHS** | Bunkhouse, outside kitchen  
Weight: 5785 LBS. | Length: 33' 9"



**330BHS** | Bunkhouse, 1 and 1/2 baths  
Weight: 6981 LBS. | Length: 37' 8"



more product detail at  
[www.keystonerv.com/Premier](http://www.keystonerv.com/Premier)

## Premier | TRAVEL TRAILERS

- New Coastal Cottage interior
- LED awning light
- Ultra-stable and secure MORryde® Step Above™ steps
- Aluminum wheels
- Power tongue jack
- Friction-hinge entry doors
- Peg board in pass-through storage
- Outdoor kitchen with galvanized countertop (22RBPR, 26RBPR, 29BHPR, 29RKPR)
- Outdoor entertainment center w/32" TV and refrigerator (30RIPR, 34BIPR)
- Furrion® flush-mounted glass cooktop and low-profile hood vent with stainless steel microwave
- Stainless steel sink
- Porcelain toilet
- 8 cu. ft. stainless steel double door refrigerator
- 32" LED TV (N/A 26RBPR, 29BHPR, 30RIPR, 34BIPR, 34RIPR)
- 42" LED TV (26RBPR, 29BHPR, 30RIPR, 34BIPR, 34RIPR)
- Solid surface kitchen countertops
- Dream Dinette™
- Hidden hinges on cabinet doors
- Interior LED lights
- Backsplash behind range
- Residential size queen bed
- Norco® 5.1 electric stabilization system
- KeyTV™ Keystone's revolutionary single-source, easy-to-use controller for over-the-air, cable and satellite television



**Ultra-Stable and Secure MORryde® Step Above™ Steps**  
Ultra-stable and secure MORryde® Step Above™ steps with Keystone kick plate



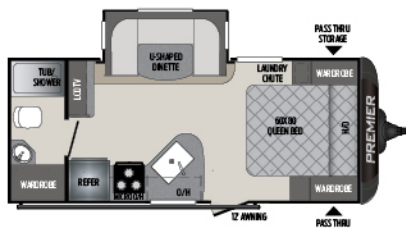
**Furrion® Kitchen Appliances**  
Furrion® flush-mounted glass cooktop and low-profile hood vent with stainless steel microwave



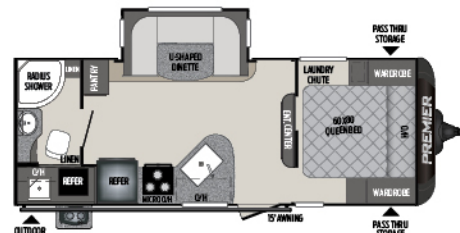
**Island Kitchen with Solid Surface Countertops**  
Island kitchen provides ample countertop space for meal preparation and other activities.



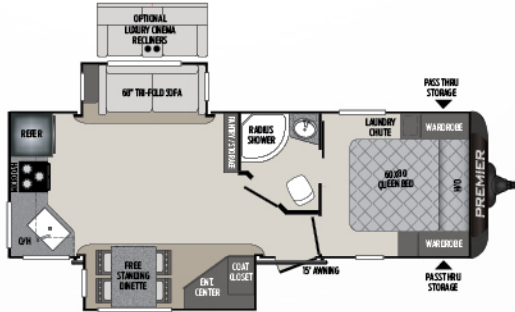
**Hidden Hinges**  
Hidden hinges on the cabinets offer a residential look and a high-end feel



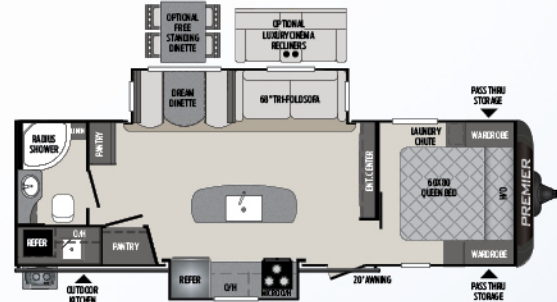
**19FBPR** | Rear bath, one slide  
Weight: 4353 LBS. | Length: 24' 3"



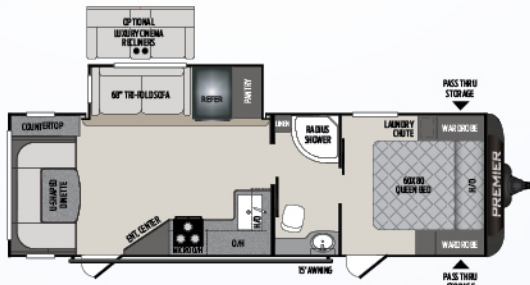
**22RBPR** | Rear bath, outside kitchen  
Weight: 4972 LBS. | Length: 26' 11"



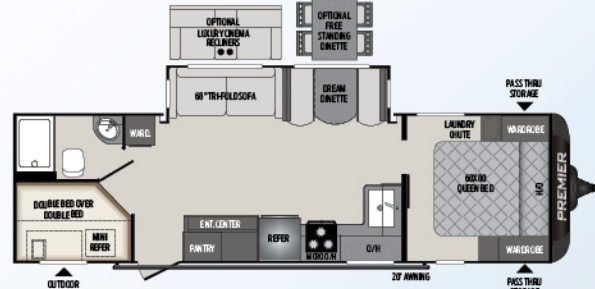
**24RKPR** | Rear kitchen, two slides  
Weight: 5563 LBS. | Length: 29' 6"



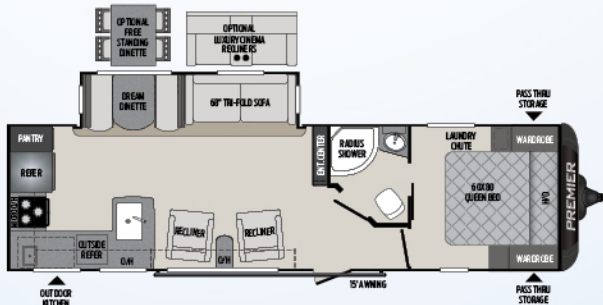
**26RBPR** | Rear bath, island kitchen  
Weight: 6121 LBS. | Length: 32'



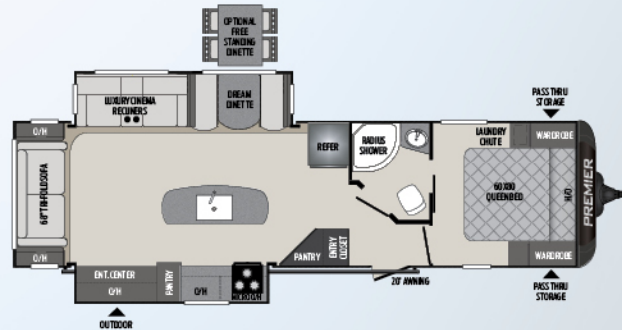
**26UDPR** | Rear dining, one slide  
Weight: 5525 | Length: 30' 11"



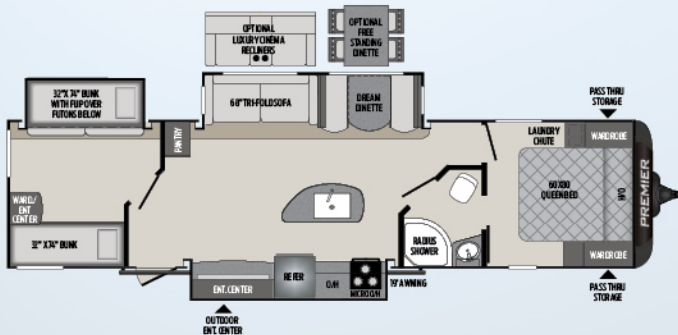
**29BHPR** | Bunkhouse, outside kitchen  
Weight: 5985 LBS. | Length: 33' 4"



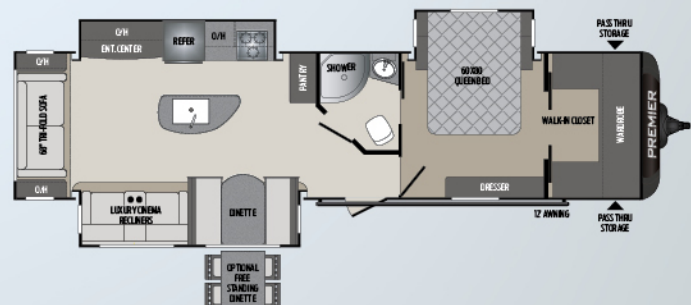
**29RKPR** | Rear kitchen, one slide  
Weight: 6172 LBS. | Length: 34' 5"



**30RIPR** | Rear living room, island kitchen  
Weight: 6870 LBS. | Length: 35' 11"



**34BIPR** | Bunkhouse, three slides  
Weight: 7285 LBS. | Length: 38' 1"



**34RIPR** | Rear living room, bed slide  
Weight: 7495 LBS. | Length: 38' 3"

### CROSSFIRE TRAVEL TRAILERS

MODEL	WEIGHT	CARRYING CAPACITY	HITCH WEIGHT	FRESH WATER	WASTE WATER	GRAY WATER	LPG	LENGTH*	WIDTH	HEIGHT	AWNING
1650EX	3420	1280	470	43	30	30	40	19' 6"	8'	10' 5"	10'
1700BH	3355	1345	375	43	30	30	40	21' 4"	8'	10' 4"	10'
1750RK	3595	1105	400	43	30	60	40	20' 4"	8'	10' 5"	10'
1800RB	3310	1090	480	43	30	30	40	21' 4"	8'	10' 5"	10'
1900RD	3360	1340	490	43	30	30	40	21' 11"	8'	10' 5"	10'
2190EX	4480	1820	610	43	30	30	40	24' 11"	8'	10' 4"	15'
2200BH	4110	2190	425	43	30	30	40	25' 4"	8'	10' 4"	15'

### BULLET TRAVEL TRAILERS

MODEL	WEIGHT	CARRYING CAPACITY	HITCH WEIGHT	FRESH WATER	WASTE WATER	GRAY WATER	LPG	LENGTH*	WIDTH	HEIGHT	AWNING
221RBS	4650	1750	545	43	30	30	40	26' 8"	8'	10' 8"	15'
243BHS	4940	1560	580	43	30	30	40	28' 10"	8'	10' 8"	19'
248RKS	5148	1352	580	43	30	60	40	29' 10"	8'	10' 8"	15'
257RSS	5158	2142	570	43	30	30	40	29' 11"	8'	10' 8"	19'
261RBS	5465	2135	600	43	30	60	40	31' 0"	8'	10' 8"	20'
269RLS	5449	2151	640	43	30	30	40	32' 5"	8'	10' 8"	15'
273BHS	5365	2235	700	43	30	30	40	31' 3"	8'	10' 8"	15'
287QBS	5840	1760	735	43	30	30	40	33' 10"	8'	10' 8"	15'
290BHS	5785	1815	705	43	30	60	40	33' 9"	8'	10' 8"	20'
308BHS	6397	1203	730	43	30	30	40	36' 0"	8'	10' 8"	19'
330BHS	6981	1619	800	43	60	30	40	37' 8"	8'	10' 11"	19'

### PREMIER TRAVEL TRAILERS

MODEL	WEIGHT	CARRYING CAPACITY	HITCH WEIGHT	FRESH WATER	WASTE WATER	GRAY WATER	LPG	LENGTH*	WIDTH	HEIGHT	AWNING
19FBPR	4353	2147	480	43	30	30	40	24' 3"	8'	11' 0"	12'
22RBPR	4972	1528	590	43	30	30	40	26' 11"	8'	11' 0"	15'
24RKPR	5563	1937	655	43	30	60	40	29' 6"	8'	11' 0"	15'
26UDPR	5525	1975	680	43	30	60	40	30' 11"	8'	11' 0"	15'
26RBPR	6121	1379	755	43	30	60	40	32' 0"	8'	11' 0"	20'
29BHPR	5985	1615	610	43	30	60	40	33' 4"	8'	11' 1"	20'
29RKPR	6172	1428	685	43	30	60	40	34' 5"	8'	11' 1"	15'
30RIPR	6870	1330	865	43	30	60	40	35' 11"	8'	11' 2"	20'
34BIPR	7285	2115	975	43	30	30	40	38' 1"	8'	11' 4"	19'
34RIPR	7495	1905	980	43	30	60	40	38' 3"	8'	11' 4"	12'

DISCLAIMER: Product information is as accurate as possible as of the date of publication of this brochure. All features, floor plans, and specifications in this brochure are subject to change without notice. Please also consult Keystone's web site at [www.keystonerv.com](http://www.keystonerv.com) for more current product information and specifications. Tow Vehicle Disclaimer. CAUTION: Owners of Keystone recreational vehicles are solely responsible for the selection and proper use of tow vehicles. All customers should consult with a motor vehicle manufacturer or their dealer concerning the purchase and use of suitable tow vehicles for Keystone products. Keystone disclaims any liability or damages suffered as a result of the selection, operation, use or misuse of a tow vehicle. KEYSTONE'S LIMITED WARRANTY DOES NOT COVER DAMAGE TO THE RECREATIONAL VEHICLE OR THE TOW VEHICLE AS A RESULT OF THE SELECTION, OPERATION, USE OR MISUSE OF THE TOW VEHICLE. \*Length is defined as the distance from the centerline of hitch pin/coupler to rear bumper of trailer. Please review owner's manual prior to purchase for more information on service warranties, extended use, towing and maintenance. Owner's manuals can be found at [keystonerv.com](http://keystonerv.com).

#### THERMAL PACKAGE (BULLET, PREMIER)\*

- Ducted heat and enclosed heated underbelly
- 2" duct off of furnace to underbelly
- 30K BTU furnace and residential heat ducts

#### PREMIER PACKAGE (PREMIER)\*

- 6' 11" vaulted ceiling
- Solid surface countertops
- MORryde® StepAbove™ steps
- Stor-Mor™ dinette
- Retractable kitchen faucet

# STANDARDS AND OPTIONS

CF Crossfire Travel Trailers  
 BL Bullet Travel Trailers  
 PR Premier Travel Trailers

	CF	BL	PR
<b>CONSTRUCTION STANDARDS</b>			
Aggressive front profile for increased towability	●	●	●
Aluminum-framed side, front and rear walls	●	●	●
2" aluminum framed floor	●	●	●
Aluminum framed slideouts	●	●	●
Darco® moisture barrier	●	●	●
In-frame fresh, gray, and black water tanks	●	●	●
7.5" - 10.5" Steel z-beam with full-length welded outrigger	●	●	●
<b>EXTERIOR CAMPING PACKAGE</b>			
6-gallon gas/electric DSI quick recovery water heater	●	●	●
Outside speakers	●	●	●
(4) Stabilizer jacks	●	●	●
TV antenna and cable/satellite hook-up	●	●	●
Electric awning	●	●	●
LED awning light	●	●	●
Wide-stance Dexter® E-Z Lube® axles	●	●	●
Outside shower (hot and cold water)	●	●	●
Black tank flush		●	●
<b>EXTERIOR</b>			
Dual propane tanks with cover	●	●	●
Spare tire	●	●	●
Oversized grab handle (main door)		●	●
9" Triple entry steps		●	
Solid step entry steps			●
Magnetic storage door catches	●	●	●
Aluminum wheels		●	●
Power tongue jack		●	●
Oversized exterior pass-thru storage with lighting		●	●
Fiberglass front cap		●	●
Entry door with friction hinges	●	●	●
Peg board in pass-thru storage		●	●
Outdoor TV hookup prep		●	●
LP quick connect		●	●
Outdoor kitchen with galvanized countertop (22RBPR, 29RKPR, 30RIPR, 31BHPR, 34BHPR)			●
Outdoor kitchen (2200BH, 243BHS, 257RSS, 261RBS, 272BHS, 287QBS, 308BHS, 330BHS)	●	●	
Enclosed underbelly	●	●	●
<b>INTERIOR CAMPING PACKAGE</b>			
13.5 BTU A/C	●	●	●
Bluetooth AM/FM Stereo with Aux, DVD and iPod Hookup		●	●
Bluetooth AM/FM Stereo with Aux and iPod Hookup	●		
Full extension drawer glides	●	●	●
Stainless steel sink		●	●

	CF	BL	PR
8 cu. ft. stainless steel double door refrigerator			●
6 cu. ft. stainless steel double door refrigerator	●	●	
32" LED TV (N/A 261RBS, 26RBPR, 29BHPR, 30RIPR, 34RIPR, 34BIPR)		●	●
42" LED TV (261RBS, 26RBPR, 29BHPR, 30RIPR, 34RIPR, 34BIPR)		●	●
Flush-mount 3 burner range with glass cover		●	●
<b>INTERIOR</b>			
Ultra-durable Whitewater™ continuous-edge kitchen countertops	●	●	
Solid surface kitchen countertops			●
Dream Dinette™		●	●
Hidden hinges on cabinet doors	●	●	●
Residential style furniture	●	●	●
Water heater-by-pass for winterization	●	●	●
Interior LED lights	●	●	●
Low profile range hood	●	●	●
Stor-Mor™ dinette			●
<b>BATHROOM</b>			
Power vent fan	●	●	●
Solid wood medicine cabinet	●	●	●
Deluxe radius shower w/glass door		●	●
Porcelain foot flush toilet			●
Tub surround with shelves	●	●	●
<b>MASTER BEDROOM</b>			
Residential-size queen bed (N/A 330BHS)		●	●
Individual LED reading lights		●	●
Hardwood entry doors		●	●
Laundry chute		●	●
Dual USB charging port		●	●
<b>SAFETY EQUIPMENT</b>			
Carbon monoxide detector	●	●	●
Smoke alarm	●	●	●
Tinted safety glass windows, egress windows (fire escape)	●	●	●
<b>OPTIONS</b>			
Bumper-mounted Aussie grill		●	●
15K A/C		●	●
50 AMP service w/second A/C (N/A Premier 19FBPR, 22RBPR, 24RKPR) (Bullet 308BHS, 330BHS Only)		●	●
Free-standing dinette		●	●
Theater seating (replaces tri-fold sofa)		●	●
5.1 electric stabilization system (mandatory)			●

# BUILT FOR THE LONG HAUL



PRINT 12.2018

