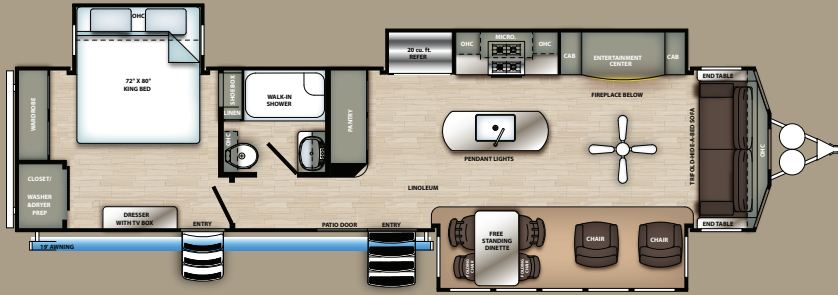


Sandpiper

LUXURY
DESTINATION
TRAILERS





401FLX

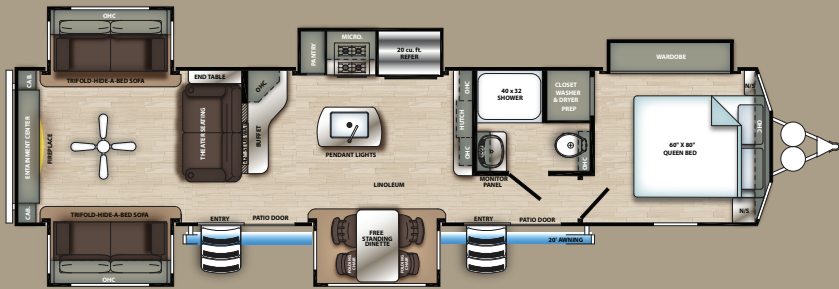
Featuring Fog Decor

CLASSIC COMFORT

Wherever your destination is located our 401FLX is where you want to spend it. With solid surface countertops, a King WiFi booster, and an exclusive stainless steel range this floorplan is packed with luxuries that will make any camping trip memorable. This floorplan showcases a full window slide room that offer you the best views of mother nature.







403RD

Featuring Fog Decor

AT HOME ON THE ROAD

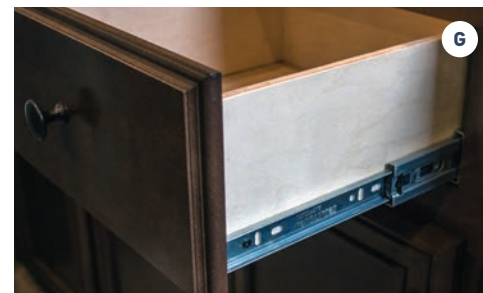
The 403RD is a lakeside paradise. This floorplan offers two separate sliding glass patio doors to invite mother nature inside. Natural light will pour in, making you feel right at home. The rear den arrangement allows ample space for entertaining. Two hide-a-beds and theater seating offer plenty of sitting space. The kitchen is equipped with an island, a full pantry and buffet style solid surface countertops. Along with a full walk in shower this unit offers a wardrobe slide for hanging clothes. This unit is also prepped to add a separate washer and dryer unit for those long stays. The 403RD is truly one of a kind.





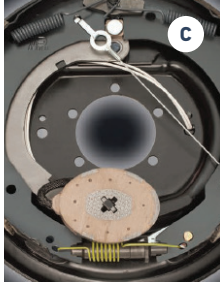
Interior Features

- A** Handcrafted fascia gives the slide-out a distinguished look
- B** Porcelain foot flush toilet, easy to use, easy to clean
- C** Designer sink faucet with pull-out sprayer and stainless undermount sink
- D** LED accent lighting at toe kick for increased visibility at night
- E** LED HDTV with premium soundbar
- F** Mocha accented crown molding gives the Sandpiper Kitchen a truly residential finish
- G** Real wood drawers on soft close, full extension, ball bearing drawer guides
- H** The Sandpiper Destination Signature package includes stainless steel appliances
- I** Enjoy the warmth and comfort of the electric fireplace
- J** Contemporary ceiling fan
- K** Upgraded master bedroom headboard with integrated LED lighting (Per floorplan)
- L** Free standing stainless steel gas range



Exterior Features

- A** Oversized grab handle at main entry door
- B** The radius roof line of the Sandpiper Destination series allows for a 99" inch interior height.
- C** Lippert auto adjusting brakes
- D** Radiused triple entry steps
- E** ABS Tank cover and 2-30 Lb. LP tanks
- F** 16" Radial tires – E Rated
- G** Command center control panel for operating slides, monitoring tank levels and controlling lighting
- H** Sandpiper's 60" patio door
- I** Underbelly Armour full coach underbelly protection
- J** Drip rail with extra long drip spouts help prevent black streaking
- K** Gel coat fiberglass protects from UV rays and prevents yellowing and cracking prevent black streaking



Standards, Packages and Optional Features

EXTERIOR FEATURES

- Gel coated color matched exterior fiberglass
- Enclosed and heated dump valves
- Large tinted windows with 80/20 UV prohibitor
- Detachable hitch
- Lippert auto adjust brakes
- Radius triple steps with 9" riser (no pinched fingers)
- Underbelly Armor
- Dometic™ "One-Touch" electric awning with adjustable arms, and integrated LED light
- 16" Radial tires-E Rated
- Automotive-style fender skirts
- Hitch light
- Porch light with interior switch
- 30 lb. double LP tanks with auto change over
- 2 exterior speakers
- Rain gutters with extra long drip spouts (prevents black streaking)
- Exterior folding grab handle
- 60" Dual pane patio door

INTERIOR FEATURES

- 99" interior height with 6'4" slide heights
- Premium mattress
- Residential stain resistant carpet
- Rustic Plank pattern linoleum
- Swivel glider recliners (where applicable)
- Two color coordinated interiors (Flint, Fog)

- Full extension ball bearing drawer glides
- Stainless steel under mounted kitchen sink
- Washer/dryer prep (select floorplans)
- Handmade cabinetry with screwed lumber core stile construction
- Residential countertops
- Recessed residential LED lighting throughout
- Colored shower surround with etched tile pattern
- Upgraded adjustable shower head with shelves
- Accent lighting over dinette
- Walk-in shower (select models)
- Crown molding over kitchen cabinets
- Extra large picture windows throughout
- Vented side windows in slideouts
- TV antenna with booster
- Solid wood drawer fronts with birch sides
- Upgraded raised panel cabinet doors with designer rails
- Bedroom slideout fascia
- 22 cu. ft. stainless steel refrigerator
- Stainless steel kitchen package
- 50" LED HDTV
- Residential carpeting
- Trash receptacle in kitchen
- Ceiling fan
- Hide-a-bed sofa with tri-fold

- Designer window treatment accented per decor

APPLIANCES / SYSTEMS

- Ducted 15K A/C
- Interior thermostat for heating and cooling
- Flush floor hydraulic slideouts (per floorplan)
- Satellite and cable hookup with RG-6 cable for high quality picture
- Porcelain foot flush toilets
- Full coach water filtration system
- 10 Gal. DSI water heater
- 65 Amp converter

CONSTRUCTION

- Welded aluminum-framed, vacuum bonded laminated superstructure
- 2" x 3" floor joists 12" on center
- 5/8" tongue & groove plywood floor decking
- 3/8" roof decking (full walk-on roof)
- Cambered powder coated frame with rust prohibitor
- Underbelly Armor
- 5" truss roof rafters
- R-10 sidewall construction

FOR YOUR SAFETY

- Smoke alarm
- Fire extinguisher
- Breakaway switch (battery hook-up required)
- Dead-bolt lock on entry door
- Liquid propane (LP) gas detector
- Fire escape windows

POPULAR OPTIONS

- Second 15K A/C
- Hide a bed ipo glide sofa
- Fantastic fan w/rain sensor
- Ceiling paddle fan w/wall switch 12V (bedroom only) (n/a 399loft)
- Heated holding tanks (12v)
- Stab jacks (4)
- Roof ladder
- Slide room awnings (all slides)
- Theater seating ipo recliners (where available)
- Non self contained (no holding tanks w/house type toilet)
- Central vacuum

POLAR TECH PACKAGE (OPTIONAL)

- Thermal pane windows
- Heated holding tanks
- 40K BTU furnace

PLATINUM PACKAGE (STANDARD -

Limited Time Offer)

- Premium Corian solid surface kitchen countertops
- Roller shades throughout
- Gas cooktop with stainless steel oven
- King Wifi Extender System

SANDPIPER DESTINATION SIGNATURE PACKAGE (STANDARD)

- LED lighting throughout
- Pillowtop mattress
- "One Touch" Dometic® electric awning w/LED lights
- Stainless steel kitchen package
- (1) 15K BTU air conditioner
- Ceiling fan in living room
- 50 amp service
- Gel coated fiberglass exterior
- 10 gal. G/E water heater w/DSI
- Residential pullout kitchen faucet
- 22 cu. ft. stainless steel refrigerator
- Tinted dual paned patio door
- 50" LED HDTV (most models)
- Premium soundbar with DVD
- Washer/dryer prep (where available)
- Power fan in bathroom(s)
- Tri-fold hide-a-bed sofa
- Wood plank pattern linoleum

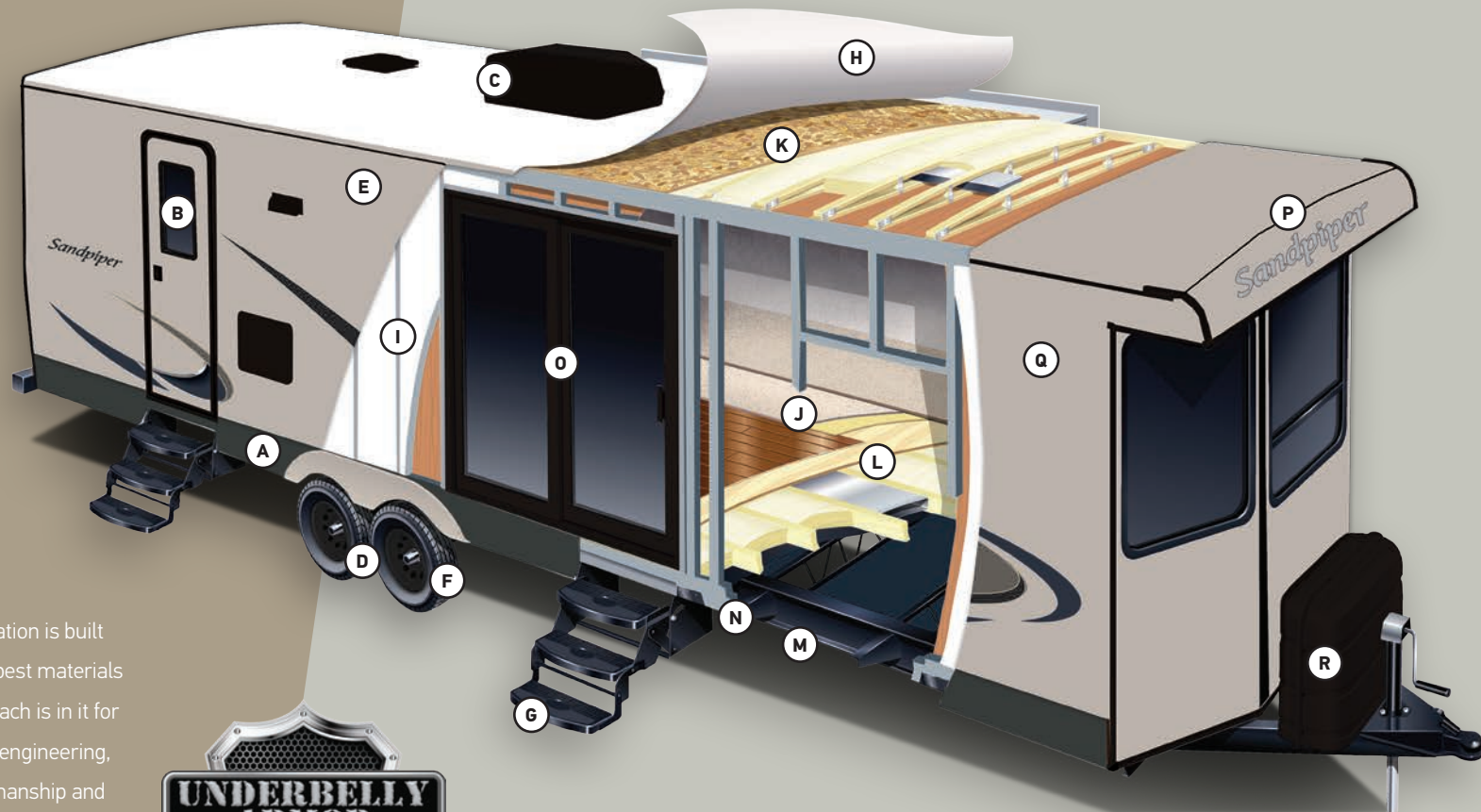
Superior Construction

Built to Last

The Sandpiper Destination is built to last using only the best materials to ensure that your coach is in it for the long haul. Careful engineering, well appointed craftsmanship and an uncompromising sense of pride go into every fifth wheel that we produce. Rest assured that your Sandpiper is built for luxury living.



- A** Rolled Aluminum Side Skirting
- B** Tinted Safety Glass Windows (80%)
- C** Dual Zone Ducted 15K BTU Air Conditioning
- D** Lippert Auto Adjust Brakes
- E** Laminated Vacuum Bonded Aluminum Sidewalls
- F** 16" E-rated Radial Tires (standard)
- G** Triple Radiused Entry Steps
- H** Seamless Rubber Roof (12-yr. Warranty)
- I** 2" Block Foam Insulation
- J** Deluxe Stain Resistant Carpet with Padding
- K** 3/8" Roof decking (Full Walk-on Roof)
- L** 5/8" Tongue and Groove Plywood Flooring
- M** Underbelly Armor full length underbelly protection



- N** I-Beam Powder-Coated Frame with Rust Inhibitor
- O** 60" Dual Paned Patio Door with Tinted Glass and Vertical Blinds
- P** Radius Roof
- Q** Painted Color Matched High Gloss Gel-coated Fiberglass Exterior
- R** Two (2) 30 Lb. LP Tanks With ABS Cover

Floorplans

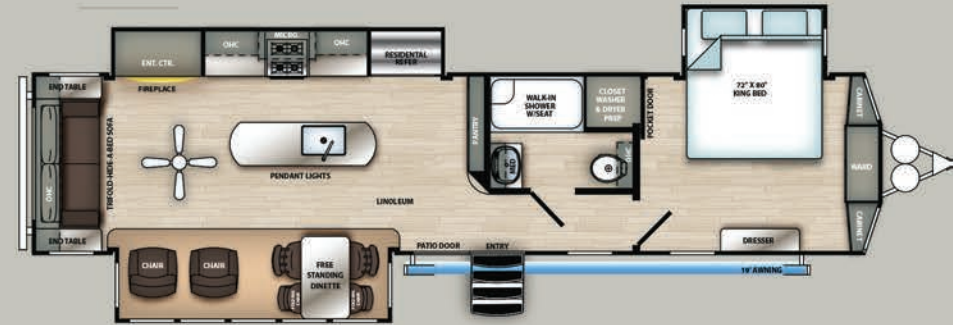
Find Your Perfect Match

SOMETHING FOR EVERYONE

Wherever you go, the Sandpiper lineup will ensure you make the most out of every adventure. Unique floorplan designs like bunkhouses, front living spaces or rear living/entertainment will accommodate any traveler or group. Luxurious features like premium hardwood accents, stainless steel appliances, and patent pending Underbelly Armor, give the Sandpiper a reputation of elegance and outstanding quality.



393RL



401FLX



393RL

399LOFT

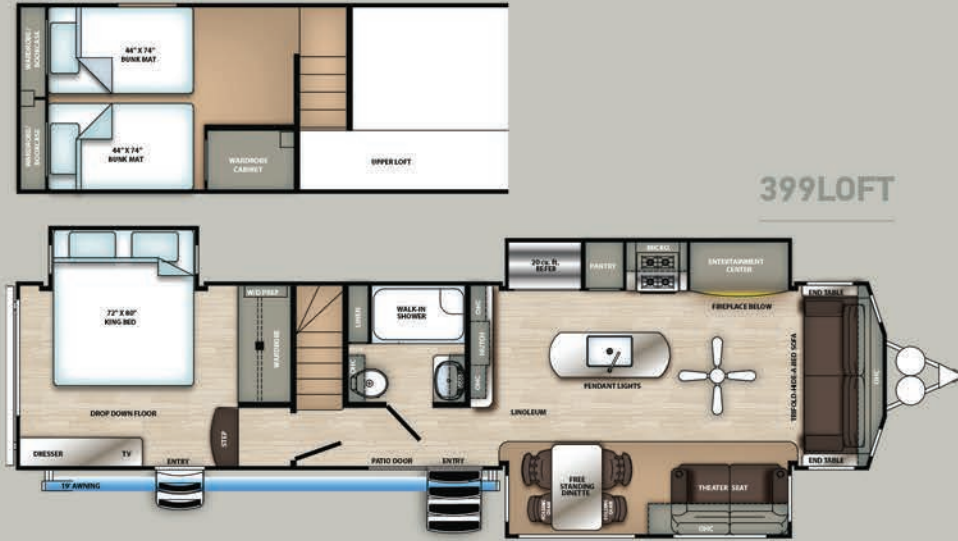
401FLX

403RD

Specifications

Hitch	1,379	1,619	1,841	1,268
UVW	10,726	10,998	10,830	11,009
GVWR	13,379	13,619	13,841	13,268
Cargo	2,653	2,621	3,011	2,259
Length (Bumper to hitch, add 16" for overall length)	41' 4"	40' 11"	40' 7"	42' 3"
Height	13' 4"	13' 4"	13' 4"	13' 4"
Awning	19'	19'	17'	20'
Gray	104	104	156	104
Black	52	52	52	52
Fresh	50	50	50	50

399LOFT



403RD



Sandpiper



GVWR (Gross Vehicle Weight Rating) - is the maximum permissible weight of the unit when fully loaded. It includes all weights, inclusive of all fluids, cargo, optional equipment and accessories. For safety and product performance do NOT exceed the GVWR.

GAWR (Gross Axle Weight Rating) - is the maximum permissible weight, including cargo, fluids, optional equipment and accessories that can be safely supported by a combination of all axles.

UVW (Unloaded Vehicle Weight)* - is the typical weight of the unit as manufactured at the factory. It includes all weight at the unit's axle(s) and tongue or pin and LP Gas. The UVW does not include cargo, fresh potable water, additional optional equipment or dealer installed accessories.

*Estimated Average based on standard build optional equipment.

CCC (Cargo Carrying Capacity)** - is the amount of weight available for fresh potable water, cargo, additional optional equipment and accessories. CCC is equal to GVWR minus UVW. Available CCC should accommodate fresh potable water (8.3 lbs per gallon). Before filling the fresh water tank, empty the black and gray tanks to provide for more cargo capacity.

** Estimated average based on standard build optional equipment

Each Forest River RV is weighed at the manufacturing facility prior to shipping. A label identifying the unloaded vehicle weight of the actual unit and the cargo carrying capacity is applied to every Forest River RV prior to leaving our facilities.

The load capacity of your unit is designated by weight, not by volume, so you cannot necessarily use all available space when loading your unit.

All information contained in this brochure is believed to be accurate at the time of publication. However, during the model year, it may be necessary to make revisions and Forest River, Inc., reserves the right to make all such changes without notice, including prices, colors, materials, equipment and specifications as well as the addition of new models and the discontinuance of models shown in this brochure. Therefore, please consult with your Forest River dealer and confirm the existence of any materials, design or specifications that are material to your purchase decision.



PRE-DELIVERY INSPECTION FACILITY
20,000 square feet of quality assurance. The bare essentials for a premium product. This state-of-the-art facility gives immediate daily feedback to production for quality assurance in every unit built.

WWW.KOACARECAMPS.ORG

Fighting Cancer + Making Memories

When a Forest River product is purchased a donation is made to Koa Care Camps. Care Camps supports more than 130 specialized summer camps throughout North America that provide a true camping experience to children with cancer and their siblings. These camps are provided at no charge to the affected families. Thank you for considering Forest River.

For more information about Care Camps visit www.koacarecamps.org.

**24/7 EMERGENCY
ROADSIDE ASSISTANCE
WITH VEHICLE PURCHASE***

TOWING	WINCH-OUT
JUMP-STARTS	MOBILE MECHANIC
TIRE CHANGES	TECHNICAL SUPPORT
FLUID DELIVERY	DEALER LOCATOR
LOCKOUT SERVICE	SERVICES

*VALID FOR 1 YEAR FROM DATE OF PURCHASE

FREE MEMBERSHIP
to Forest River Owners' Group

www.forestriverfrog.com

CUSTOMER SATISFACTION

FOREST RIVER
encourages you to

BUY LOCAL

PREFERENTIAL SERVICE | PRODUCT INFORMATION

www.ForestRiverBuyLocal.com



Learn More
Scan this barcode using a QR Reader on your smart phone to learn more about Forest River.



A Berkshire Hathaway company.

Forest River, Inc.
55470 C.R. 1, Elkhart, IN 46515
(574) 389-4600
www.forestriverinc.com/Sandpiper
www.forestriveraccessories.com

YOUR LOCAL SANDPIPER DEALER