

HQ15 - Getting Started Manual



Perfect for smaller families or couples who want to go off grid. Introducing the baby brother HQ15 with the same characteristic as its bigger brothers, packed down to a roomy lightweight single axle 15ft strong build quality, while housing luxurious modern appliances.



Disclaimer And Copyright

All information, illustrations and specifications contained in this manual are based on the latest product information available at the time of publication. If and when new materials and production techniques are developed that can improve the quality of its product, or material substitutions are necessary due to availability, Black Series reserves the right to make such changes.

Black Series Camper Owner's Getting Started Manual

©2018 Black Series Camper, Inc. All rights reserved

TABLE OF CONTENTS

TABLE OF CONTENTS	5
INTRODUCTION	6
SAFETY	6
GENERAL INFORMATION	6
FLOOR PLANS AND SPECIFICATIONS	9
INTERIOR	9
HVAC & ELECTRIC	10
EXTERIOR	11
TOWING	12
MAINTENANCE	13

INTRODUCTION

The Black Series HQ15 – Getting Started was created as a short and concise instructional manual regarding the basics of how to set up, use, and care for your Black Series travel trailer. Every trailer owner will have their own set of skills and varying capabilities so have you need any further assistance, please contact your Black Series Dealer for information, repairs, and resources.

Always obey warnings and safety messages.

SAFETY

Alarms and Detectors

Smoke and CO2 detectors are both battery operated. Please refer to attached user manual for instructions.

GENERAL INFORMATION

Limited Warranty Policy

1. Warranty is valid only to the original purchaser and may not be transferred or deferred in any way. Once sold or otherwise disposed of by the original purchaser to any third party, BLACK SERIES CAMPERS accepts no liability, claim logged by anyone other than the original owner.
2. Warranties are not valid on items purchased for the purpose of rental, loan or commercial use.
3. No warranty is offered on products sold at auction or as demonstrator, factory seconds or used products.
4. Warranty does not cover the product in the event of abuse, misuse, accidental damage or collision, modification of design, fair wear and tear (wheel bearings, wheels, tires, paint, travel cover, zips and mesh.) neglect, incorrect or inadequate maintenance. Suspension, wheels nuts and bearings must be checked before every trip. Wheel bearings must be serviced by an authorized motor mechanic in 6-month intervals. Note for extreme use the camper or Caravan will require more frequent wheel bearing service (River crossing, beach use, touring etc.)

5. Caravan and Trailer bodies or and their workmanship are guaranteed for a period of 12 months from original date of purchase.
6. Tents and workmanship are guaranteed for a period of two (2) years from original date of purchase. General wear and tear is exempt.
7. All warranty work is to be carried out by BLACK SERIES CAMPERS or by a BLACK SERIES CAMPERS authorized representative unless with the express written permission of BLACK SERIES CAMPERS will repair or replace the item at their discretion
8. Any transport, accommodation, towing or recovery costs arising from a warranty claim are the responsibility of the purchaser unless otherwise stated in writing by BLACK SERIES CAMPERS.
9. Your Black Series Caravan or Camper comes with guarantees that cannot be excluded under the California Consumer Law. The benefits within our Warranty are in addition to other rights and remedies under the California Consumer Law in relation to our Black Series Caravan or Campers.
10. Warranty is valid to Black Series Caravans and Campers that have been maintained in accordance with Camper trailer and Caravan care guide (see website for details) Note if warranty claim is lodged, service documentation may be required to support your claim.
11. That all servicing must be conducted by a licensed mechanic and in accordance with BLACK SERIES CAMPERS recommended service / maintenance schedule, we request that all servicing invoices and documents be kept accessible in the event that need to be presented at a later date.

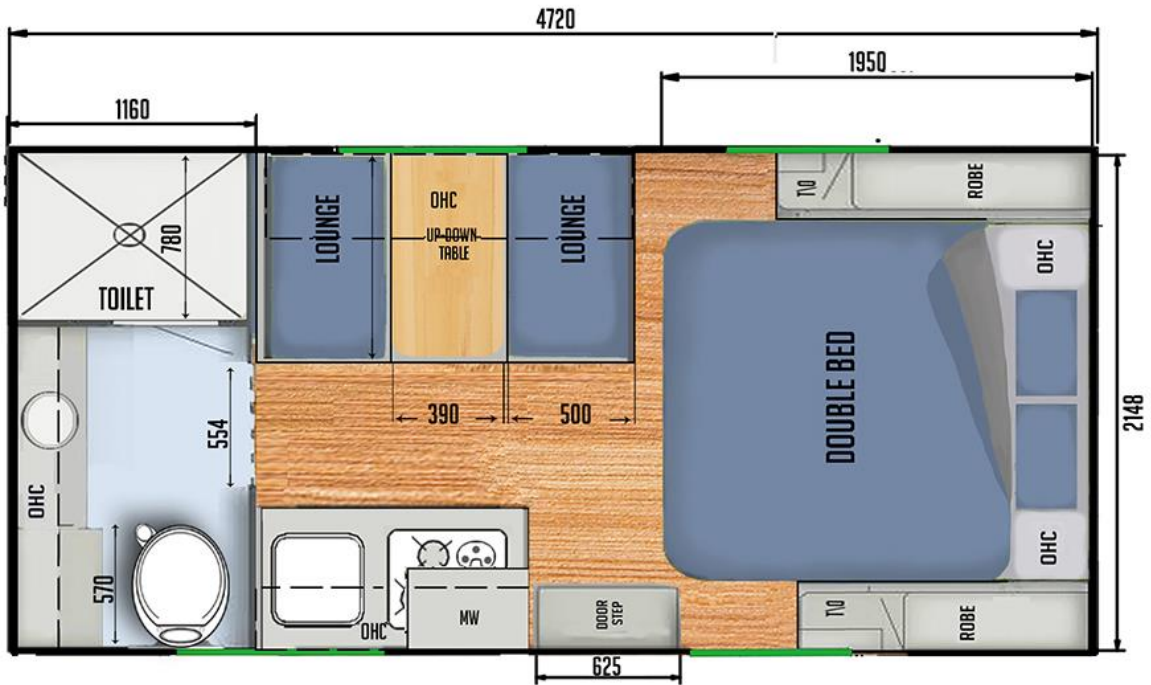
Service

Please ensure regular maintenance & greasing. This will depend on distance & terrain travelled. Please note; we recommend you have your bearing serviced every 300 and 600 miles, and to tighten all wheel nuts within 70 miles from time of departure.

Reporting Safety Defects

For any safety or warranty issues, Contact our Warranty department at (833) 822-6737 or at warranty@blackseriescamper.com

FLOOR PLANS AND SPECIFICATIONS



- EXTERNAL BODY LENGTH: 22.3 (ft)
- EXTERNAL WIDTH: 7.3 (ft)
- EXTERNAL HEIGHT: 9.67 (ft)
- UNIT WEIGHT: 4,722 (lbs)
- MAXIMUM TRAILER CAPACITY (GVWR): 6,000 (lbs)

INTERIOR

Windows

There is 5 Eurovision Windows With Fly Screens And Privacy Shades.

Power

The HQ15 is powered by a 12v/120v electrical system with an inverter with a peak of 4000 watts. The HQ15 can be powered by propane, battery, solar and shore power. It is recommended that when operating the trailer on the road to keep the propane

source of power on in order to keep the fridge running. The HQ15 comes with two 5gal. propane jerry-can holders.

The gauge on top will automatically switch to the color red and switch to a secondary propane tank when the first runs out. The black switch above will move left or right accordingly to indicate which tank is being used. When the switch is on the right, it will be using the right tank. If the switch is left, it will be using the left tank.

Shore Power

Shore Power is the term used to describe shoreside power or grid and land based electrical power for when your travel trailer is idle. You would use shore power when you are at a serviced campsite with grid electricity. A 30 AMP exterior connection is included along with a 25 ft shore power cord.

Solar

The HQ15 comes with two Roof mounted 150w solar panels.

Battery

All campers sold with batteries have been fitted with two 100Ah Batteries.

Please note: we recommend to have the batteries charged before and after every use on your camper along with charging your batteries when your camper is not in use. This method will help maximize the battery life.

HVAC & ELECTRIC

Kenwood CD-Receiver

All Black Series Travel Trailers come with a Kenwood CD-Receiver. *Please refer to the Kenwood CD-Receiver Instruction Manual for directions, specifications, and additional information.*

E24 Series Sceptre Television

All Black Series Travel Trailers come with a E24 Series Sceptre Television. *Please refer to the E24 Series User Guide for directions, specifications, and additional information.*

Dometic Penguin II Air Conditioning

Black Series travel trailers use Dometic brand Penguin II AC for RVs.

“The leading low-profile RV air conditioner, the Penguin II Rooftop Air Conditioner is a powerful cooler. With its ultra-low profile, this streamlined rooftop unit is aerodynamically designed to reduce drag when on the move. [...] The high-performance motor and fan deliver powerful cooling performance using a more eco-friendly R410A refrigerant. Despite its compact and lightweight design, features such as the robust rib-reinforced base pan ensure that the Penguin II can handle tough environments for a longer service life.” -[Dometic Penguin II Product Page](#)

Dometic DF Series Furnace

Black Series Travel Trailers come with a Dometic brand DF Series Furnace. *Please refer to the Dometic DF Series Furnace Operating Instructions for directions, specifications, and additional information.*

Dometic Refrigerator

Black Series Travel Trailers come with a Dometic brand fridge. *Please refer to the Dometic Refrigerator Operating Instructions for directions, specifications, and additional information.*

EXTERIOR

Tri-lock Security Door - Left Hand Hinge Operating Instructions

Operate Left Hand Hinge Door from Outside

1. **To Unlock** - Hold the outer handle in a fixed clockwise position. Insert key into lock cylinder, and turn anti-clockwise until a click is felt. Rotate key back to original position and key can be removed.
2. **To Open** - Rotate outer handle clockwise to retract all three lock bolts to open door. (All three lock bolts will remain retracted, outer handle will return to normal position).
3. **To Separate Inner Security Door from Outside Door** - Lift small release lever on the interior door below the lock and this will allow the two doors to separate (to rejoin simply close together firmly).

4. **To Close Door** - Make sure security door and outer door are rejoined. Close door into frame which will trigger the auxiliary bolt which activates the centre bolt lock.
5. **Lock Door** - Close as per Step 4. Rotate outer handle anti-clockwise in a fixed position to engage top and bottom lock bolts. Insert key into lock cylinder and turn clockwise until a click is felt. Rotate key to original position, release the outer handle, and the key can be removed. Now your door is unlocked.

Operate Left Hand Hinge Door from Inside

1. **To Unlock** - Turn deadlock catch clockwise and then rotate inner handle anti-clockwise to release all three lock bolts.
2. **To Lock** - Rejoin security door and outer door as per Step 4. Rotate handle clockwise to engage top and bottom lock bolts. Rotate deadlock catch anti-clockwise to lock.

TOWING

Tips & Tricks: Jockey Wheel - First thing you put down, last thing you put up.

Hitching Your Travel Trailer

1. With your towing vehicle parked ahead of the front of the trailer, slide the vehicle adapter on to the polyblock hitch so the holes are aligned.
2. Insert the spring into the large steel pin along with the washer and place the pin through the aligned holes. The washer and spring should sit on top of the adapter hole with the washer nudged between the spring and the adapter.
3. The end of the pin will have an additional hole for the cotter pin. Secure the cotter pin into the hole. The cotter pin secures the large steel pin to the polyblock hitch and the vehicle adapter, making sure the trailer is secured to your vehicle.
4. There are two safety chains connected to the tongue of the vehicle. The safety chains act as a form of back-up to reduce the risk of the trailer from disconnecting from the vehicle it is attached to in case of a catastrophic failure of the polyblock hitch. To connect the safety chain to your vehicle, make sure to cross the chains before attaching to the vehicle hitch. If the chains are too long, twist the chains before attaching. This is to ensure the chains do not drag on the road, causing potential sparks and fires.

5. The last step before embarking is to remember to put your stands and your jockey wheel up.

Unhitching Your Travel Trailer

When set and ready to unhitch your trailer, park trailer in set location, lower the stabilizer leg, lower jockey wheel and stabilize before unhitching the trailer and removing the safety chains.

MAINTENANCE

Maintenance Schedule

- Repack wheel bearing and adjust if necessary
- Greasing coupling
- Greasing suspension components
- Tension all nuts and bolts before and after every use
- Adjusting locks and seals
- Wheel alignment
- Seasoning tent regularly
- Check all lights are working
- Check electrical cables for potential damage
- Check tyre pressure as per recommendations
- Check condition on all tyres including spares
- Check wheel nuts are tensioned including spares
- Check the hand brake and electric brakes are adjusted and in good condition
- Adjust brake shoes if brakes are loose
- Applying rust prevention products
- Touch up any chips quickly to prevent rust stains
- Regular cleaning of product
- Cleaning water tank internally and externally
- After returning from your trip, remove all water from your water tank
- Drying out tent thoroughly after each use

Water Tanks

General

The general water tank is your water reservoir when you're using the HQ15. General water applies to all the fresh water usage for showers and sinks. The HQ15 comes with a 50 gal. tank.

Note: Always wear gloves when handling the grey and black water tanks as you will be dealing with biohazardous waste.

Grey

The grey water tank collects all the used water in your travel trailer except the water for the toilet. The HQ15 features a 26 gal. grey water tank. Your grey water tank is located on the bottom left side of your trailer. Once located, remove the cap and connect your sewer hose. Put the end of your sewer hose in the dump hole at least several inches inside to avoid splashing or spilling.

Black

The black water tank collects all waste, solids, and toilet paper from the toilet. In order to dump and clean the black water tank, you must have a water hose specific for flushing out the black water tank, a sewer hose, and the available dump hole. The HQ15 features a 26 gal. black water tank located in the lower left back under section of the travel trailer.

Sanitation Toilets

Black Series Travel Trailers all come with a Dometic brand gravity flush sanitation toilet. *Please refer to the Dometic Sanitation Toilet Instruction Manual for directions, specifications, and additional information.*

Note: Always make sure to use RV Toilet Paper. Regular toilet paper is too thick to be dissolved and can lead to clogs in your black water tank.